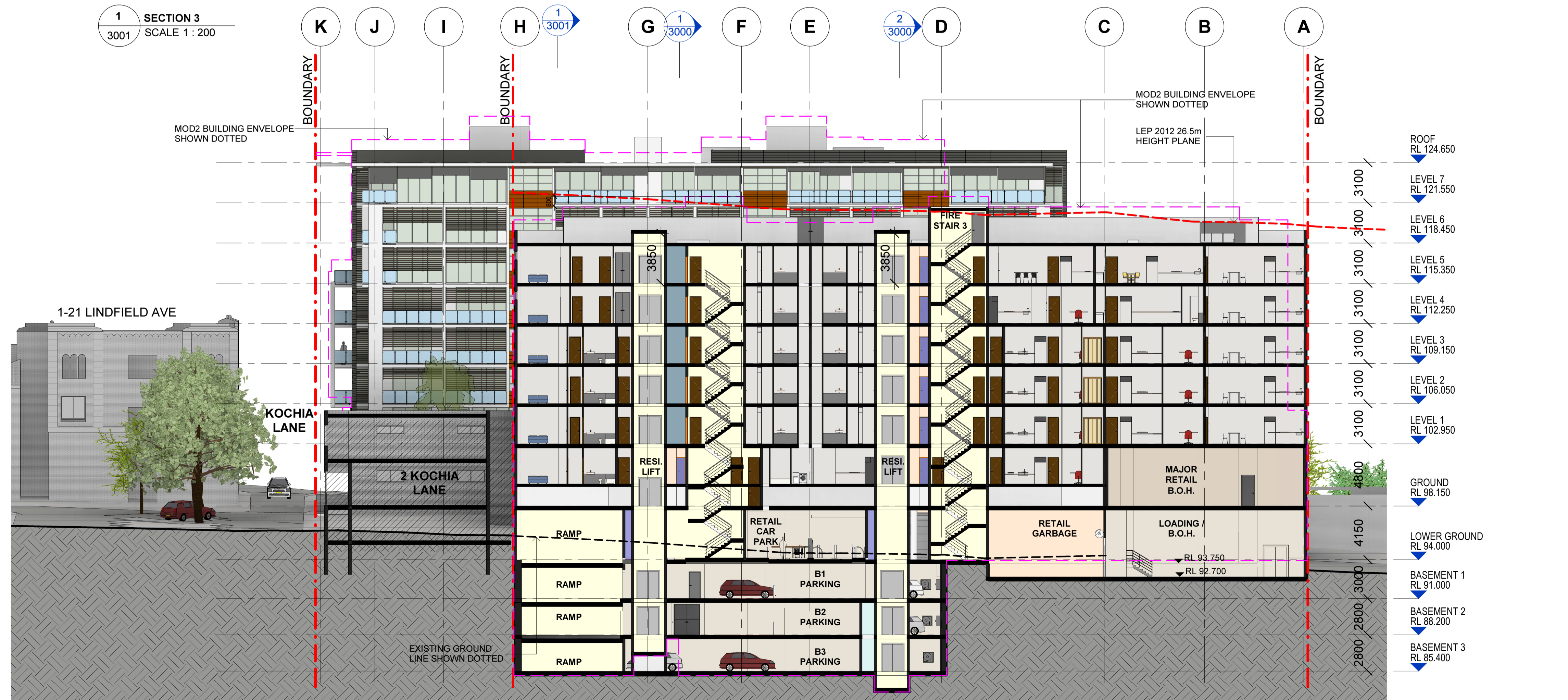


1 SECTION 3  
3001 SCALE 1 : 200



2 SECTION 4  
3001 SCALE 1 : 200

**Notes**  
All dimensions and setbacks to be verified prior to commencement, omissions or discrepancies to be notified to the architect.

**Copyright**  
The copyright of this drawing together with any other documents prepared by crone partners architecture studios, pty ltd (cp) remains the property of cp. crone partners grants licence for the use of this document for the purpose for which they are intended. The licence is not transferable without the permission of cp.

**Quality Assurance System**

Authorised By: \_\_\_\_\_ Date: \_\_\_\_\_

Rev	DESCRIPTION	By	Date
A	ISSUED FOR SECTION 75W SUBMISSION	MQ	20/11/2012
B	ISSUED FOR PREFERRED PROJECT REPORT SUBMISSION	MQ	20/05/2013
C	ISSUED FOR SECTION 75W SUBMISSION	MQ	31/10/2014
D	ISSUED FOR CONSULTANTS COORDINATION	MQ	19/12/2014
E	ISSUED FOR CONSULTANTS COORDINATION	MQ	23/10/2014
F	ISSUED FOR INFORMATION	MQ	11/02/2015
G	ISSUED FOR SECTION 75W MODIFICATION 3 SUBMISSION	MQ	20/02/2015
H	ISSUED FOR SECTION 75W MODIFICATION 3 SUBMISSION	MQ	24/02/2015
I	ISSUED FOR INFORMATION	MQ	28/07/2015

**Builder**  
**AQUALAND**  
LEVEL 32  
225 George Street  
SYDNEY NSW 2000  
Ph: +61 2 9252 3347  
Fax: +61 2 9241 1754

**Client**  
**AQUALAND**  
LEVEL 32  
225 George Street  
SYDNEY NSW 2000  
Ph: +61 2 9252 3347  
Fax: +61 2 9241 1754

**Structural Engineer**  
**AECOM**  
Level 21, 420 George St, Sydney NSW 2000  
Ph: 02 8934 0000 Fax: 02 8934 0001

**Mechanical Engineer**  
**WOOD & GRIEVE ENGINEERS**  
Level 3, 454 - 456 Pacific Highway,  
St Leonards, NSW 2000  
Ph: 02 9484 7000 Fax: 02 8484 7100

**Electrical Engineer**  
**WOOD & GRIEVE ENGINEERS**  
Level 3, 454 - 456 Pacific Highway,  
St Leonards, NSW 2000  
Ph: 02 9484 7000 Fax: 02 8484 7100

**Hydraulic Engineer**  
**INSYNC SERVICES**  
Suite 8, Level 2, 56 Church Ave,  
Mascot, NSW 2015  
Ph: 02 9669 4311 Fax: 02 9669 4322

**Landscape Architect**  
**Land Live Arch**  
3 Sublime Point Ave  
Tascott, NSW 2250  
Ph: 0401 271 241

**KEY**

**Scale 1 : 200 @A1**

**cronepartners**  
Cronepartners  
level 2, 364 kent street,  
sydney, nsw 2000, australia  
Ph: +61 2 8295 5300  
Fax: +61 2 8295 5301

**Project**  
**LINDFIELD MIXED-USE DEVELOPMENT**  
**23-41 LINDFIELD AVE & 7, 11 HAVILAH LA**  
**LINDFIELD NSW 2070**

Drawn: MQ Checked: VD Date: 24/02/2015

**Drawing Title**  
**SECTIONS**

**SHEET 2 OF 3**  
**S75W(MOD3 PPR) SUBMISSION**

**S75W SUBMISSION - MOD 3 PPR**

CA 2924 ADAZ 3001 I  
Project no. Drawing Phase. Drawing No. Rev

Cad File No: C:\Users\michaelq\Documents\CA-2924-Z-M3-AR-Main\_Model-Central-S75W MOD3 PPR\_R15\_michaelq.rvt Plot Date: 28/07/2015 4:28:50 PM