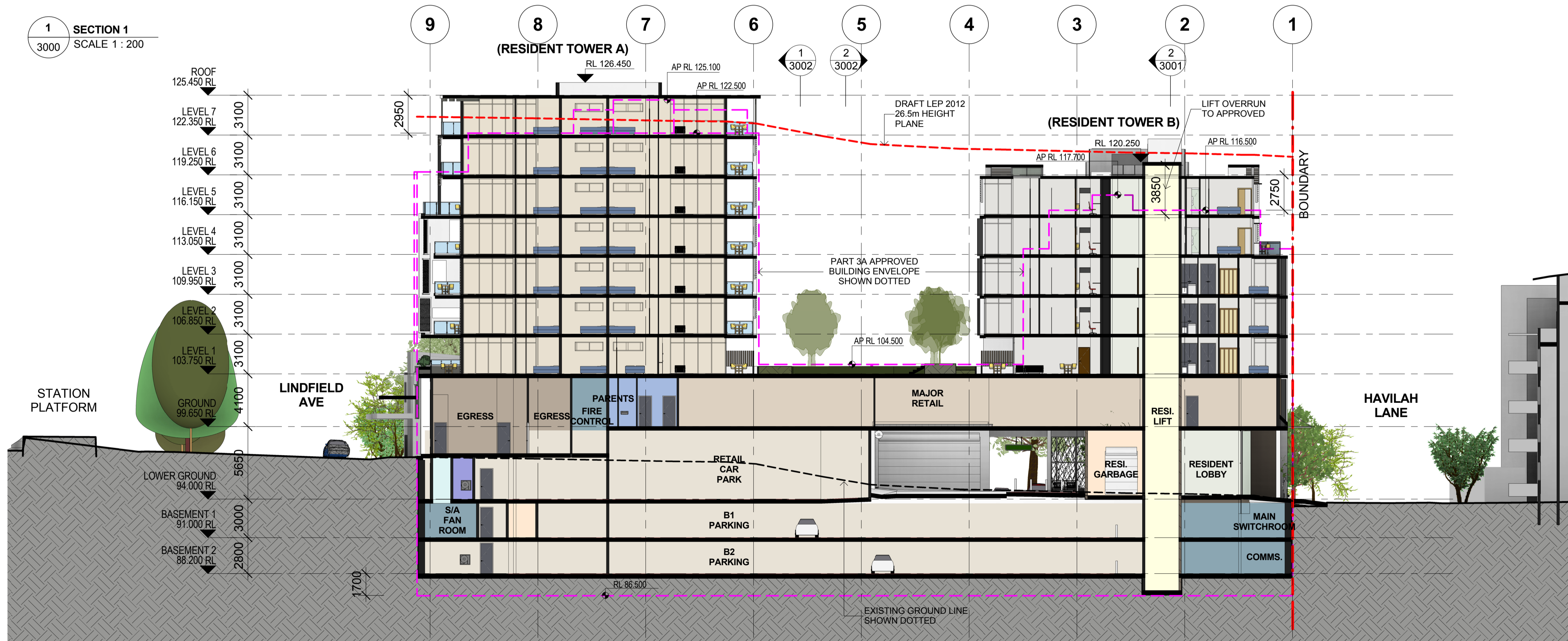


1 SECTION 1
3000 SCALE 1 : 200



2 SECTION 2
3000 SCALE 1 : 200

COLOR FILL LEGEND

- | | | | | |
|-------------------------------------------------------------------------------------------------------------------------------------------|----------------------------------------------------------------------------------------------------------------------------------------------------|--------------------------------------------------------------------------------------------------------------------------------------|--------------------------------------------------------------------------------------------------------------------------------------|--------------------------------------------------------------------------------------------------------------------------------------------------|
| AMENITY | GARBAGE | MECH. RISER | RESIDENT(A) | SERVICE ZONE |
| CIRCULATION | HORIZONTAL TRANSPORTATION | PARKING | RESIDENT(B) | TANKS |
| ELECTRICAL RISER | HYD/FIRE RISER | PUBLIC AREA | RETAIL | VERTICAL TRANSPORTATION |

Notes
All dimensions and setbacks to be verified prior to commencement, omissions or discrepancies to be notified to the architect.
Copyright
The copyright of this drawing together with any other documents prepared by crone partners architecture studios, ply ltd (cp) remains the property of cp. crone partners grants licence for the use of this document for the purpose for which they are intended. The licence is not transferable without the permission of cp.

Quality Assurance System

Authorised By: _____ Date: _____

Rev	DESCRIPTION	By	Date
A	ISSUED FOR SECTION 75W SUBMISSION	MQ	20/11/2012

Builder

Client
ANKA (CIVIC CENTER) PTY LTD
LEVEL 3
179-191 NEW SOUTH HEAD RD
EDGECLIFF, SYDNEY NSW 2027
Ph: +61 2 9302 3000
Fax: +61 2 9302 3030



Structural Engineer AECOM Level 21, 420 George St, Sydney NSW 2000 Ph: 02 8934 0000 Fax: 02 8934 0001	Mechanical Engineer WOOD & GRIEVE ENGINEERS Level 3, 454 - 456 Pacific Highway, St Leonards, NSW 2000 Ph: 02 8484 7000 Fax: 02 8484 7100
Electrical Engineer WOOD & GRIEVE ENGINEERS Level 3, 454 - 456 Pacific Highway, St Leonards, NSW 2000 Ph: 02 8484 7000 Fax: 02 8484 7100	Hydraulic Engineer INSYNC SERVICES Suite 8, Level 2, 56 Church Ave, Mascot, NSW 2015 Ph: 02 9669 4311 Fax: 02 9669 4322
Landscape Architect ASPECT Studios Studio 61 - Level 6, 61 Marlborough St Surry Hills, NSW 2010 Ph: 02 9699 7182 Fax: 02 9699 7192	

KEY

Scale 1 : 200 @A1

cronepartners
Cronepartners
level 2, 364 Kent street,
sydney, nsw 2000, australia
Ph: +61 2 8295 5300
Fax: +61 2 8295 5301

Project
LINDFIELD MIXED-USE DEVELOPMENT
23-37 LINDFIELD AVE & 11 HAVILAH LA
LINDFIELD NSW 2070

Drawn: MQ Checked: VD Date: 20/11/2012

Drawing Title
SECTIONS

SHEET 1 OF 3
SECTION 75W SUBMISSION

CA 2924	ADAZ	3000	A
Project no.	Drawing Phase.	Drawing No.	Rev

SECTION 75W SUBMISSION

Plot Date: 19/11/2012 12:33:03 PM
Cad File No: C:\Users\michaelq\Documents\CA-2924-Z-M3-AR-Main_Model-Central_michaelq.rvt