



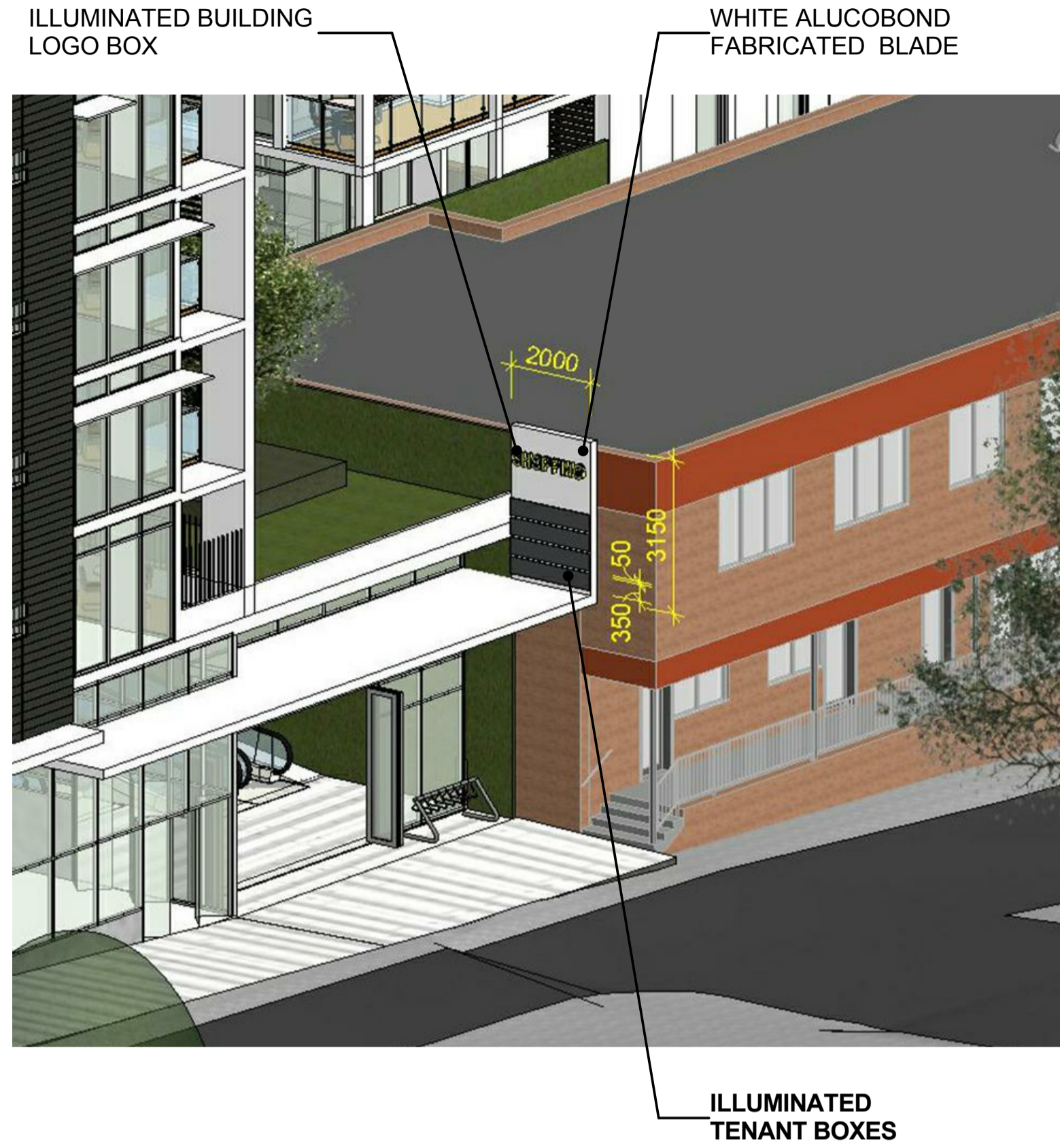
External Sign

Specific Tenant Signage Lindfield Avenue

Description:
Sign structures and cladding are to be designed by the project specific architect on site by site basis.

The designs on this page are indicative only. Final designs, finishes and dimensions are to be determined based on site specific criteria.

Performance Expectations:
The illuminated specific tenant signages' size and location as shown.
ANKA to confirm specific details, ie. IAG.



External Sign

Tenant Signage Boxes Kochia Lane

Description:
Sign structures and cladding are to be designed by the project specific architect on site by site basis.

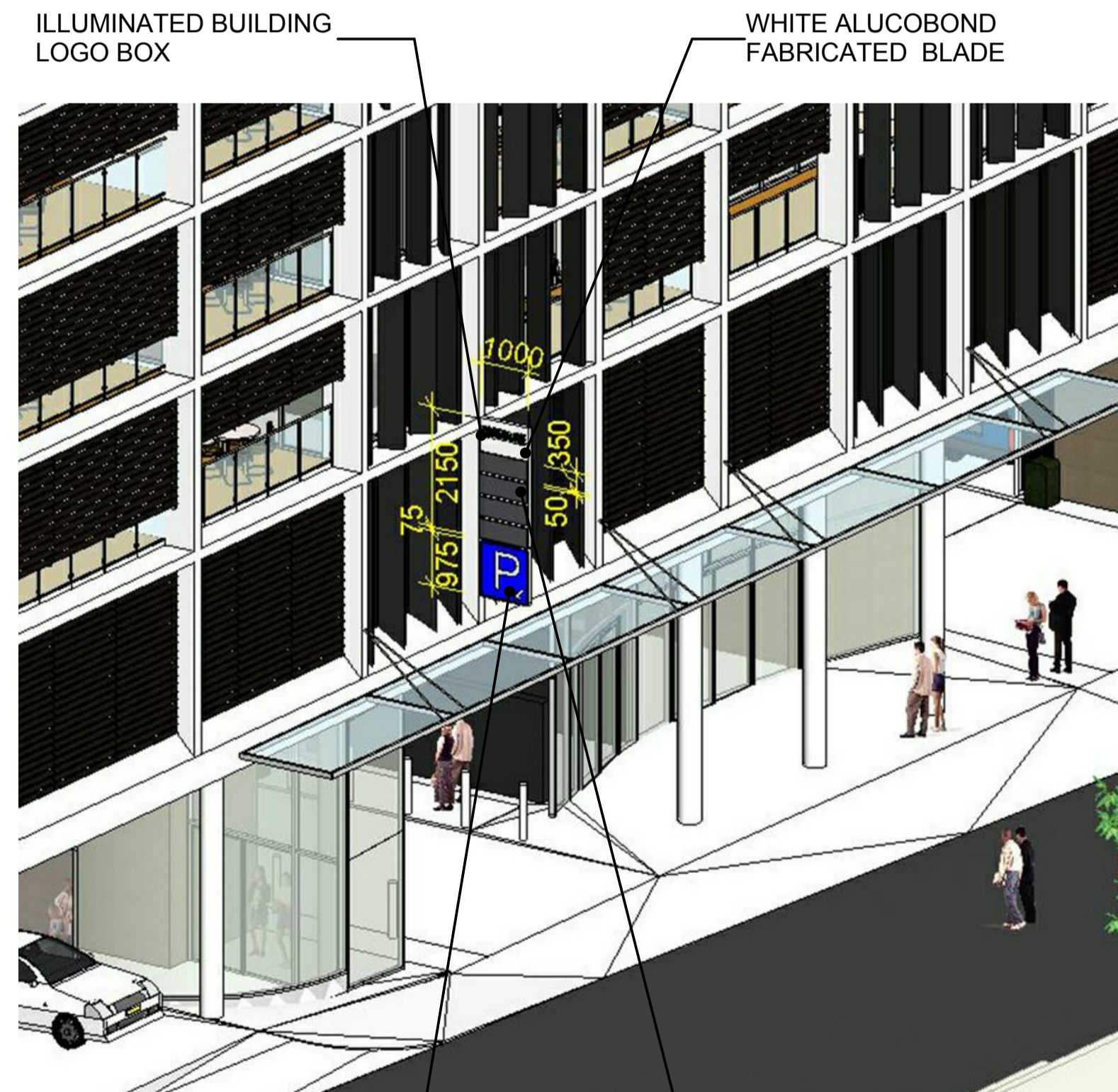
The designs on this page are indicative only. Final designs, finishes and dimensions are to be determined based on site specific criteria.

Performance Expectations:
The illuminated building logo box's size and location as shown. ANKA to confirm specific details, ie. shopping. The sign are to be illuminated with LED fittings. The building logo and letters are to be fabricated with an opal acrylic face and with the sides of the letters in white opaque acrylic to eliminate visible LED hotspots. When mounted to the wall, provide an access panel on the side to enable servicing of the LEDs. All illumination is to be even with no hot/dark spots or any light leakage. The transformer location MUST be hidden and approved by Stockland prior to fabrication. No visible screw fixings are allowed to the front face of this sign. Rear panels are to be coloured to match the front face.

The illuminated tenant boxes' size and location as shown. ANKA to confirm specific details, ie. IAG. The illuminated tenant boxes are to be spaced as shown to ensure the hierarchy of the sign. They are internally illuminated boxes with fluorescent fittings. Where tenant boxes are under 2400mm wide they typically have opal acrylic faces with applied vinyl tenant logos. Where tenant boxes are longer than 2400mm, they have a flexface system to the front. Flexface boxes are to have a welded aluminium frame and flexface extrusion with trimless face. Flexface front is to be removable with adjustable tensioners. Flexface front is white (translucent) with applied vinyl logos as required. Both types of tenant boxes will require access panels to suit. Typically, sides of boxes have a white paint finish.

1 SIGNAGE - Lindfield Ave
6500 NOT TO SCALE

2 SIGNAGE - Kochia Lane
6500 NOT TO SCALE



External Sign

Tenant / Parking Signage Box Havilah Lane

Description:
This wall mounted double sided, internally illuminated sign is typically located at strategic locations to direct traffic toward the car park entry points.

This sign may vary in size and mounting height and will be determined on a site by site basis.

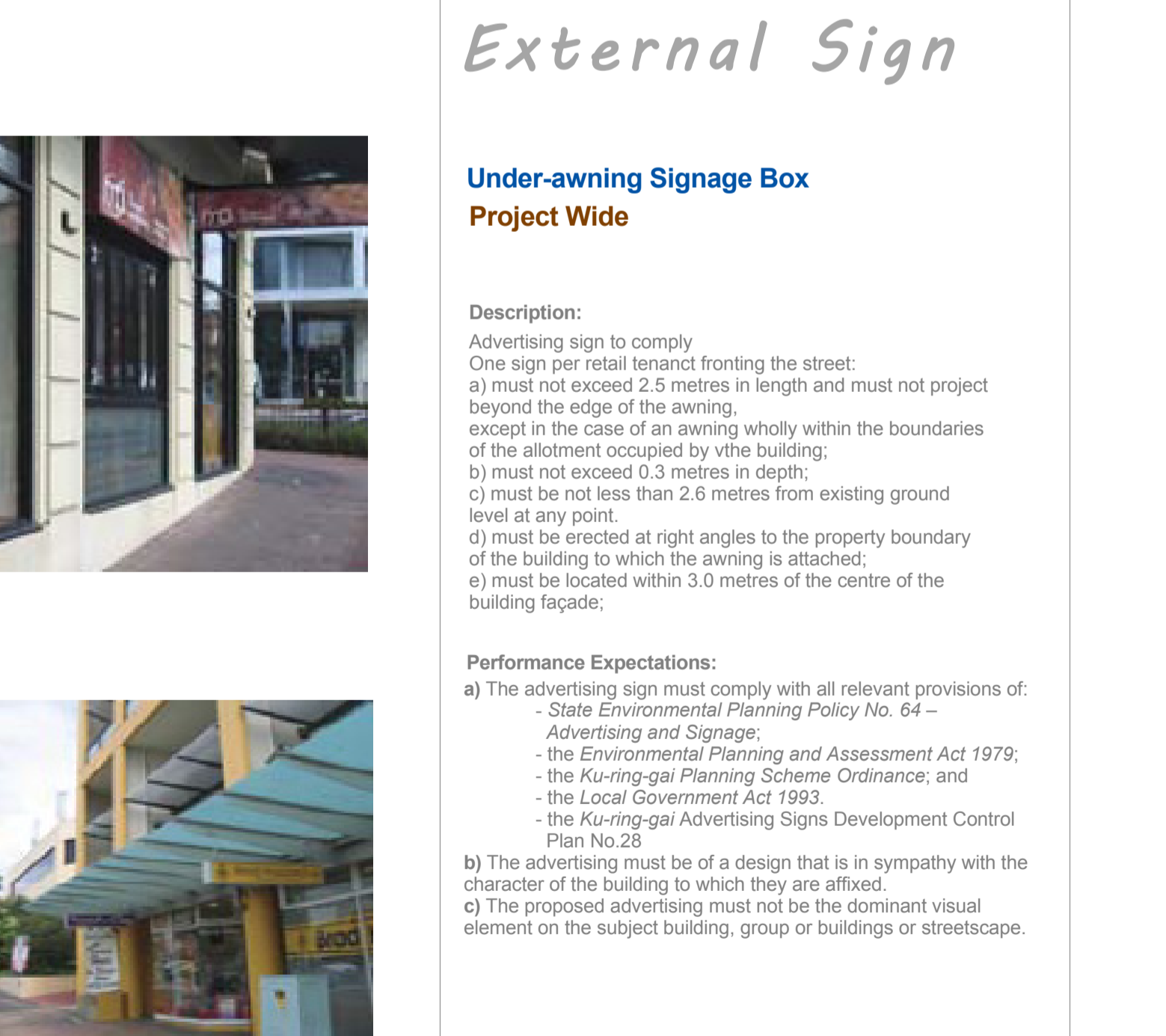
Sign structures and cladding are to be designed by the project specific architect on site by site basis.

The designs on this page are indicative only. Final designs, finishes and dimensions are to be determined based on site specific criteria.

Performance Expectations:
The illuminated building logo box and tenant boxes' size and location as shown. ANKA to confirm specific details. Performance expectation similar to Kochia Lane signage blade.

The illuminated parking signage box's size and location as shown. The box is made up of a metal frame spray painted to match PMS 2757. The front and back faces are opal acrylic panels with internal fluorescent illumination. The front face is to be removable to allow access to the lights. The arrow and 'P' is applied laser cut opaque vinyl onto the opal acrylic illuminated face. All external sign boxes are to be fully sealed and waterproof. Illumination is to be even with no hot/dark spots or light leakage. Any applied vinyl is to be free of bubbles, creases or other imperfections.

3 SIGNAGE - Havilah Lane
6500 NOT TO SCALE



External Sign

Under-awning Signage Box Project Wide

Description:
Advertising sign to comply
One sign per retail tenant fronting the street:
a) must not exceed 2.5 metres in length and must not project beyond the edge of the awning;
except in the case of an awning wholly within the boundaries of the allotment occupied by the building;
b) must not exceed 0.3 metres in depth;
c) must be not less than 2.6 metres from existing ground level at any point.
c) must be erected at right angles to the property boundary of the building to which the awning is attached;
e) must be located within 3.0 metres of the centre of the building façade;

Performance Expectations:
a) The advertising sign must comply with all relevant provisions of:
- State Environmental Planning Policy No. 64 - Advertising and Signage;
- the Environmental Planning and Assessment Act 1979;
- the Ku-ring-gai Planning Scheme Ordinance; and
- the Local Government Act 1993.
- the Ku-ring-gai Advertising Signs Development Control Plan No.28
b) The advertising must be of a design that is in sympathy with the character of the building to which they are affixed.
c) The proposed advertising must not be the dominant visual element on the subject building, group or buildings or streetscape.

4 SIGNAGE - Under Awning
6500 NOT TO SCALE

- NOTE:**
- THIS DOCUMENT FORMS THE BASIS FOR THE SIGNAGE CONTRACTOR TO DEVELOP SITE SPECIFIC WORKSHOP DRAWINGS FOR ANKA APPROVAL.
 - THE MANUFACTURER IS TO PROVIDE DETAILED WORKSHOP DRAWINGS TO ENSURE MANUFACTURABILITY OF SIGNAGE AND COMPONENTS. MANUFACTURER TO PROVIDE ENGINEERING CERTIFICATION WHERE NECESSARY. SIGNAGE MOUNTING METHOD TO BE APPROVED BY ANKA.
 - USE ORIGINAL DIGITAL FILES SUPPLIED FOR ALL LOGO AND TYPE REPRODUCTION WHERE PROVIDED. REFER TO COLOUR ARTWORK FOR EXACT GRAPHIC AND COLOUR SPECIFICATION.
 - ALL DIMENSIONS AND EXISTING CONDITIONS MUST BE CHECKED AND VERIFIED ON SITE BEFORE FABRICATION. ANY DISCREPANCIES NOT BROUGHT TO IMMEDIATE NOTICE WILL BE DEEMED TO BE THE RESPONSIBILITY OF THE CONTRACTOR OR FABRICATOR INVOLVED. ALL DIMENSIONS ARE IN MILLIMETRES. DO NOT SCALE FROM DRAWINGS.
 - THIS DRAWING SHEET SHOULD BE PLOTTED IN COLOUR TO CLEARLY IDENTIFY THE DIAGRAM.

SECTION 75W SUBMISSION

Notes All dimensions and setbacks to be verified prior to commencement, omissions or discrepancies to be notified to the architect.			
Copyright The copyright of this drawing together with any other documents prepared by crone partners architecture studios, ply ltd (cp) remains the property of cp. crone partners grants licence for the use of this document for the purpose for which they are intended. The licence is not transferable without the permission of cp.			
Quality Assurance System			
Authorised By:		Date:	
Rev	DESCRIPTION	By	Date
A	ISSUED FOR SECTION 75W SUBMISSION	MQ	20/11/2012
Builder			
Client ANKA (CIVIC CENTER) PTY LTD LEVEL 3 179-191 NEW SOUTH HEAD RD EDGECLIFF, SYDNEY NSW 2027 Ph: +61 2 9302 3000 Fax: +61 2 9302 3030			
Structural Engineer AECOM Level 21, 420 George St, Sydney NSW 2000 Ph: 02 8934 0000 Fax: 02 8934 0001			
Mechanical Engineer WOOD & GRIEVE ENGINEERS Level 3, 454 - 456 Pacific Highway, St. Leonards, NSW 2000 Ph: 02 9484 7000 Fax: 02 8484 7100			
Electrical Engineer WOOD & GRIEVE ENGINEERS Level 3, 454 - 456 Pacific Highway, St. Leonards, NSW 2000 Ph: 02 9484 7000 Fax: 02 8484 7100			
Hydraulic Engineer INSYNC SERVICES Suite 8, Level 2, 56 Church Ave, Mascot, NSW 2015 Ph: 02 9669 4311 Fax: 02 9669 4322			
Landscape Architect ASPECT Studios Studio 61 - Level 6, 61 Marlborough St Surry Hills, NSW 2010 Ph: 02 9699 7182 Fax: 02 9699 7192			
KEY			
Scale As indicated@A1			
cronepartners Cronepartners level 2, 364 Kent street, sydney, nsw 2000, australia Ph: +61 2 8295 5300 Fax: +61 2 8295 5301			
Project LINDFIELD MIXED-USE DEVELOPMENT 23-37 LINDFIELD AVE & 11 HAVILAH LA LINDFIELD NSW 2070			
Drawn: MQ	Checked: VD	Date: 20/11/2012	
Drawing Title SIGNAGE - EXTERNAL			
SECTION 75W SUBMISSION			
CA 2924	ADAZ	6500	A
Project no.	Drawing Phase.	Drawing No.	Rev