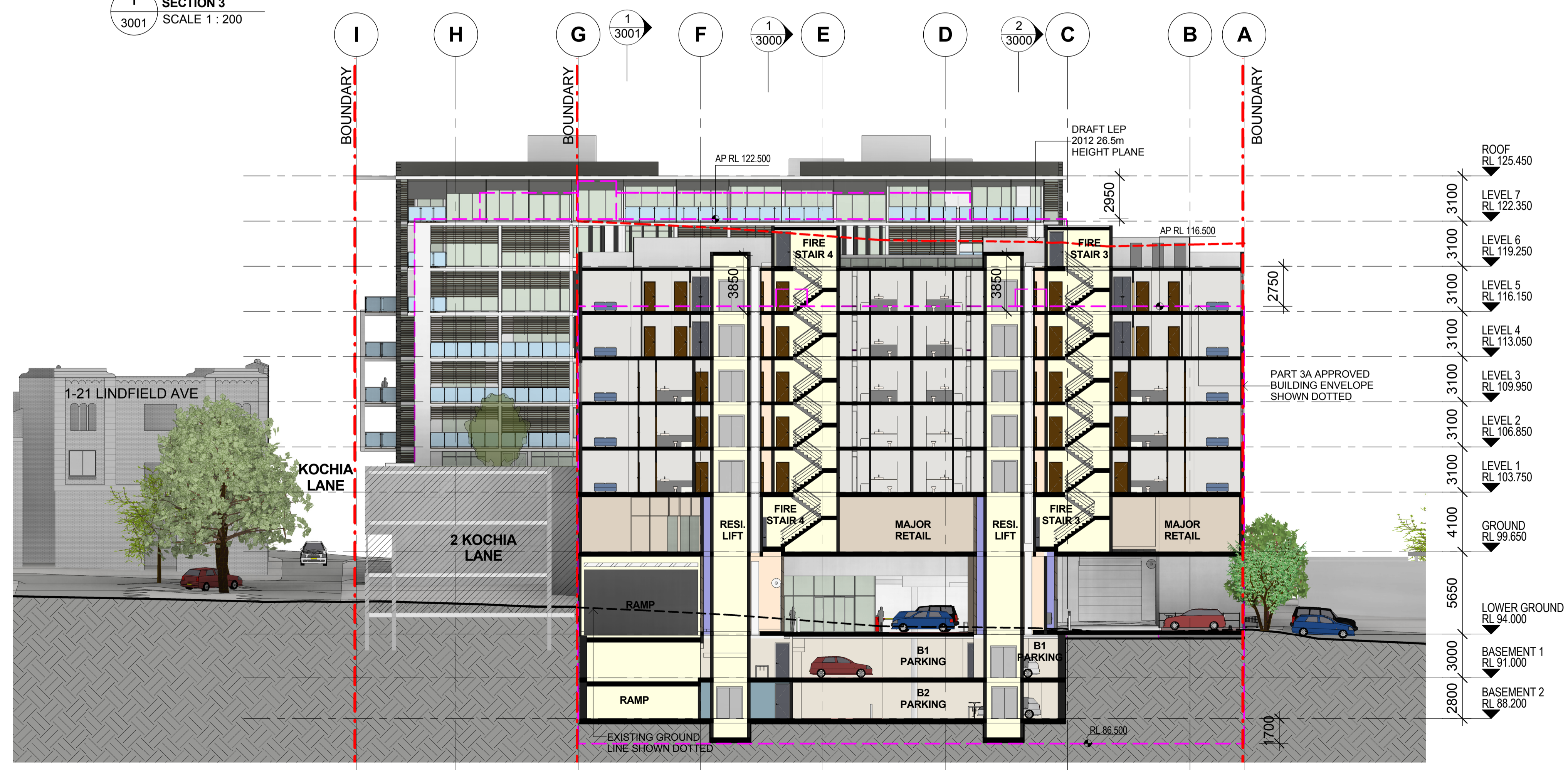


1 SECTION 3  
3001 SCALE 1 : 200



2 SECTION 4  
3001 SCALE 1 : 200

**SECTION 75W SUBMISSION**

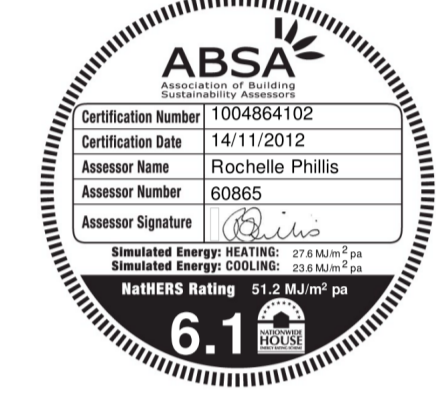
**Notes**  
All dimensions and setbacks to be verified prior to commencement, omissions or discrepancies to be notified to the architect.

**Copyright**  
The copyright of this drawing together with any other documents prepared by crone partners architecture studios, ply ltd (cp) remains the property of cp. crone partners grants licence for the use of this document for the purpose for which they are intended. The licence is not transferable without the permission of cp.

**Quality Assurance System**

Authorised By: \_\_\_\_\_ Date: \_\_\_\_\_

| Rev | DESCRIPTION                       | By | Date       |
|-----|-----------------------------------|----|------------|
| A   | ISSUED FOR SECTION 75W SUBMISSION | MQ | 20/11/2012 |



ABSA  
Certification Number: 1004964702  
Certification Date: 14/11/2012  
Assessor Name: Rochelle Phillis  
Assessor Number: 60865  
Assessor Signature: \_\_\_\_\_  
Standard George HEATRE: 27460000  
Standard George COOLING: 01040000  
**6.1**

**Builder**  
ANKA (CIVIC CENTER) PTY LTD  
LEVEL 3  
179-191 NEW SOUTH HEAD RD  
EDGECLIFF, SYDNEY NSW 2027  
Ph: +61 2 9302 3000  
Fax: +61 2 9302 3030

**Client**  
ANKA (CIVIC CENTER) PTY LTD  
LEVEL 3  
179-191 NEW SOUTH HEAD RD  
EDGECLIFF, SYDNEY NSW 2027  
Ph: +61 2 9302 3000  
Fax: +61 2 9302 3030

**Structural Engineer**  
AECOM  
Level 21, 420 George St. Sydney NSW 2000  
Ph: 02 8934 0000 Fax: 02 8934 0001

**Mechanical Engineer**  
WOOD & GRIEVE ENGINEERS  
Level 3, 454 - 456 Pacific Highway,  
St. Leonards, NSW 2000  
Ph: 02 8484 7000 Fax: 02 8484 7100

**Electrical Engineer**  
WOOD & GRIEVE ENGINEERS  
Level 3, 454 - 456 Pacific Highway,  
St. Leonards, NSW 2000  
Ph: 02 8484 7000 Fax: 02 8484 7100

**Hydraulic Engineer**  
INSYNC SERVICES  
Suite 8, Level 2, 56 Church Ave,  
Mascot, NSW 2015  
Ph: 02 9669 4311 Fax: 02 9669 4322

**Landscape Architect**  
ASPECT Studios  
Studio 61 - Level 6, 61 Marlborough St  
Surry Hills, NSW 2010  
Ph: 02 9699 7182 Fax: 02 9699 7192

**KEY**

**Scale 1 : 200 @A1**

**cronepartners**  
Cronepartners  
level 2, 364 Kent street,  
sydney, nsw 2000, australia  
Ph: +61 2 8295 5300  
Fax: +61 2 8295 5301

**Project**  
LINDFIELD MIXED-USE DEVELOPMENT  
23-37 LINDFIELD AVE & 11 HAVILAH LA  
LINDFIELD NSW 2070

|           |             |                  |
|-----------|-------------|------------------|
| Drawn: MQ | Checked: VD | Date: 20/11/2012 |
|-----------|-------------|------------------|

**Drawing Title**  
SECTIONS

**SHEET 2 OF 3**  
SECTION 75W SUBMISSION

|             |                |             |     |
|-------------|----------------|-------------|-----|
| CA 2924     | ADAZ           | 3001        | A   |
| Project no. | Drawing Phase. | Drawing No. | Rev |