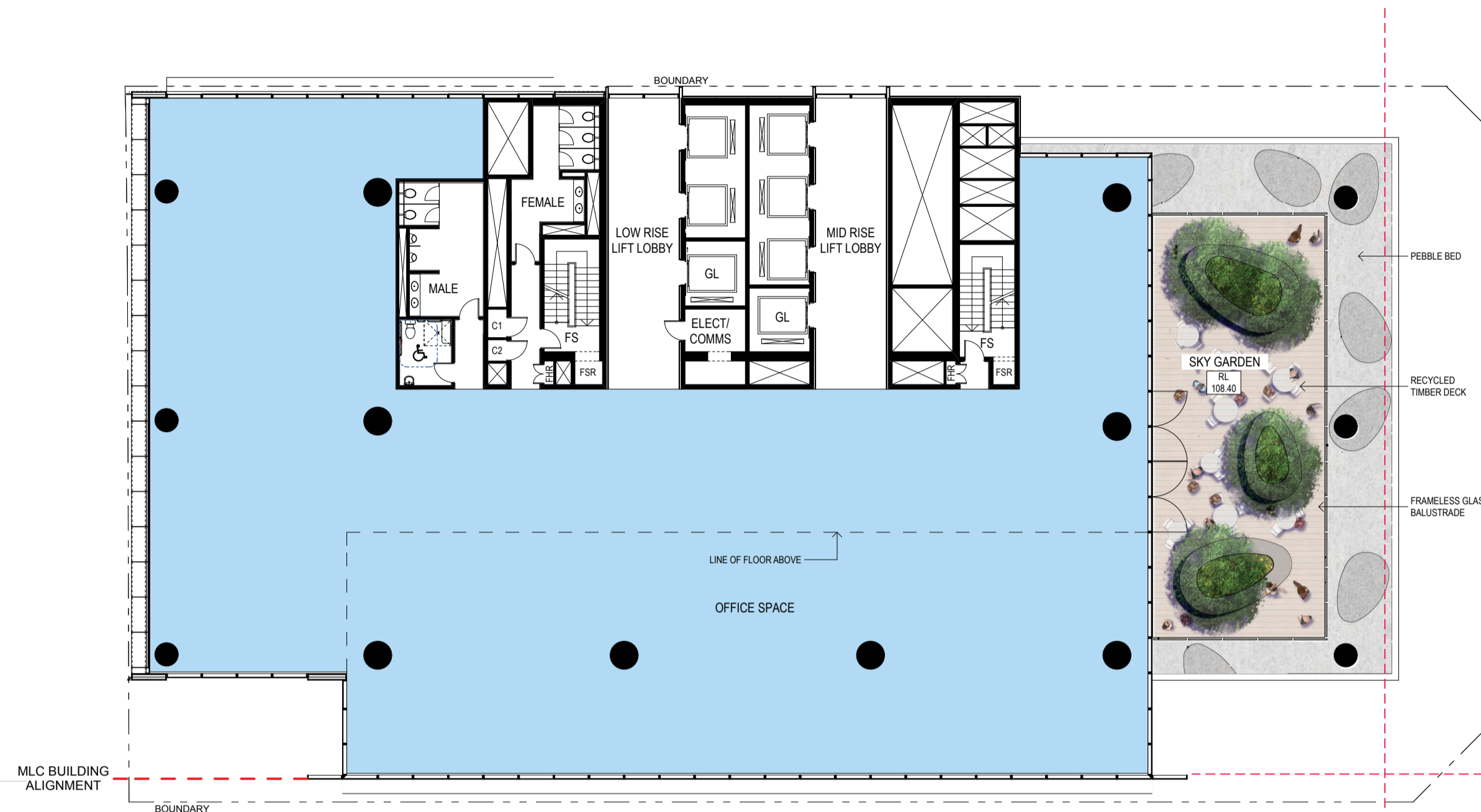
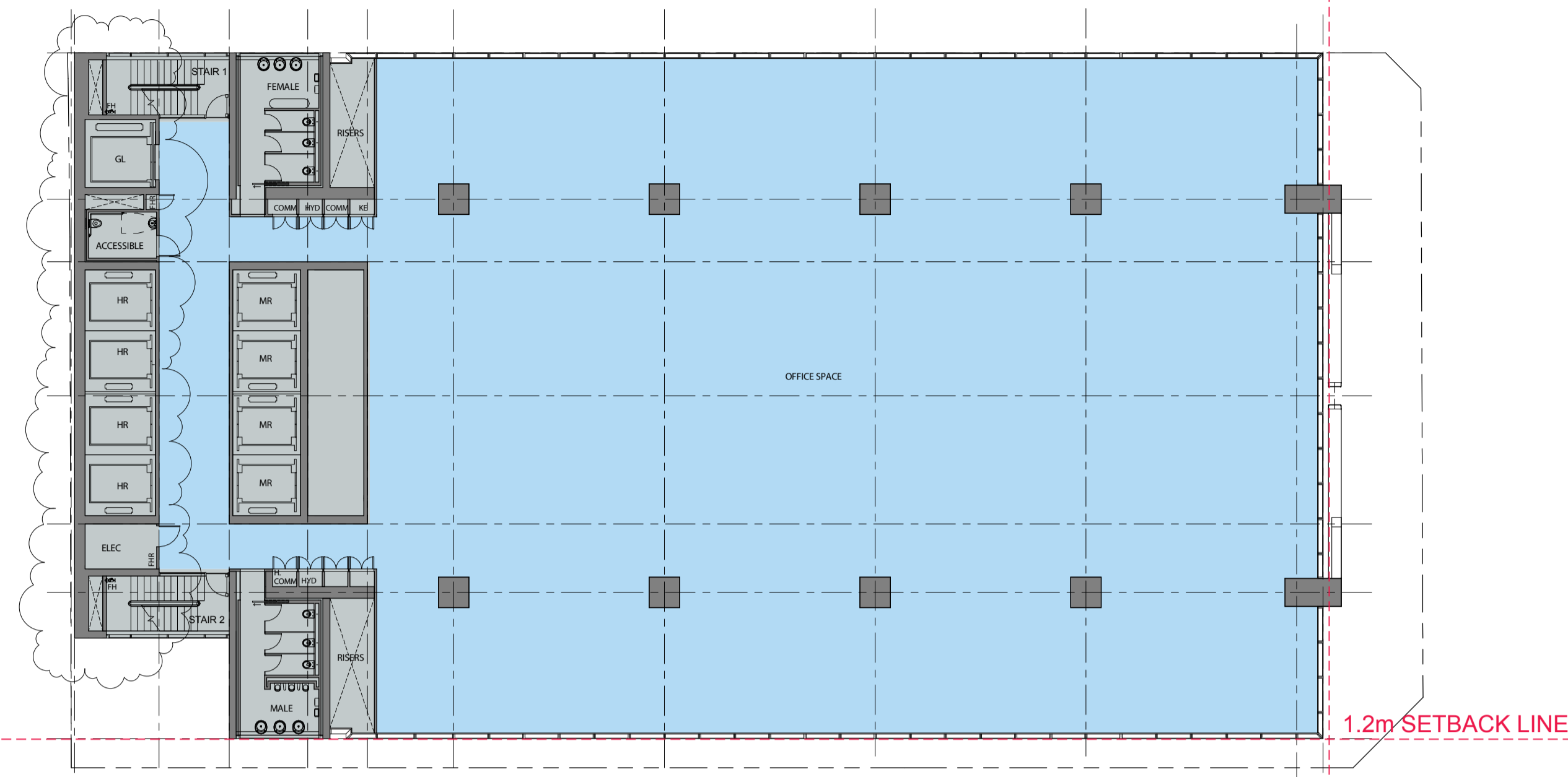


Do not scale drawings. Verify all dimensions on site

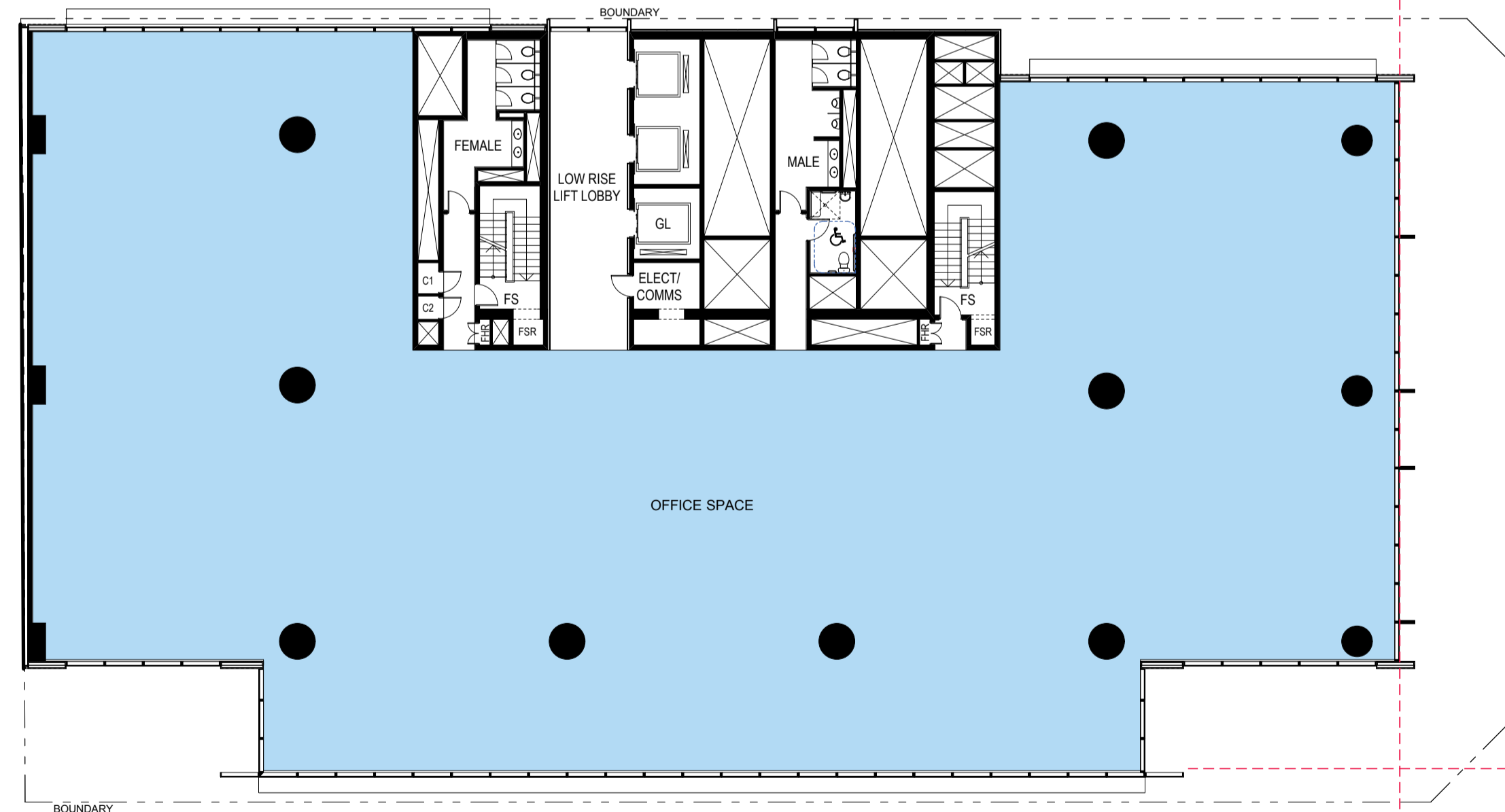
issue	amendment	date
A	SECTION 75W APPLICATION	31.08.11
B	SECTION 75W AMENDMENT MOD 2	25.10.13



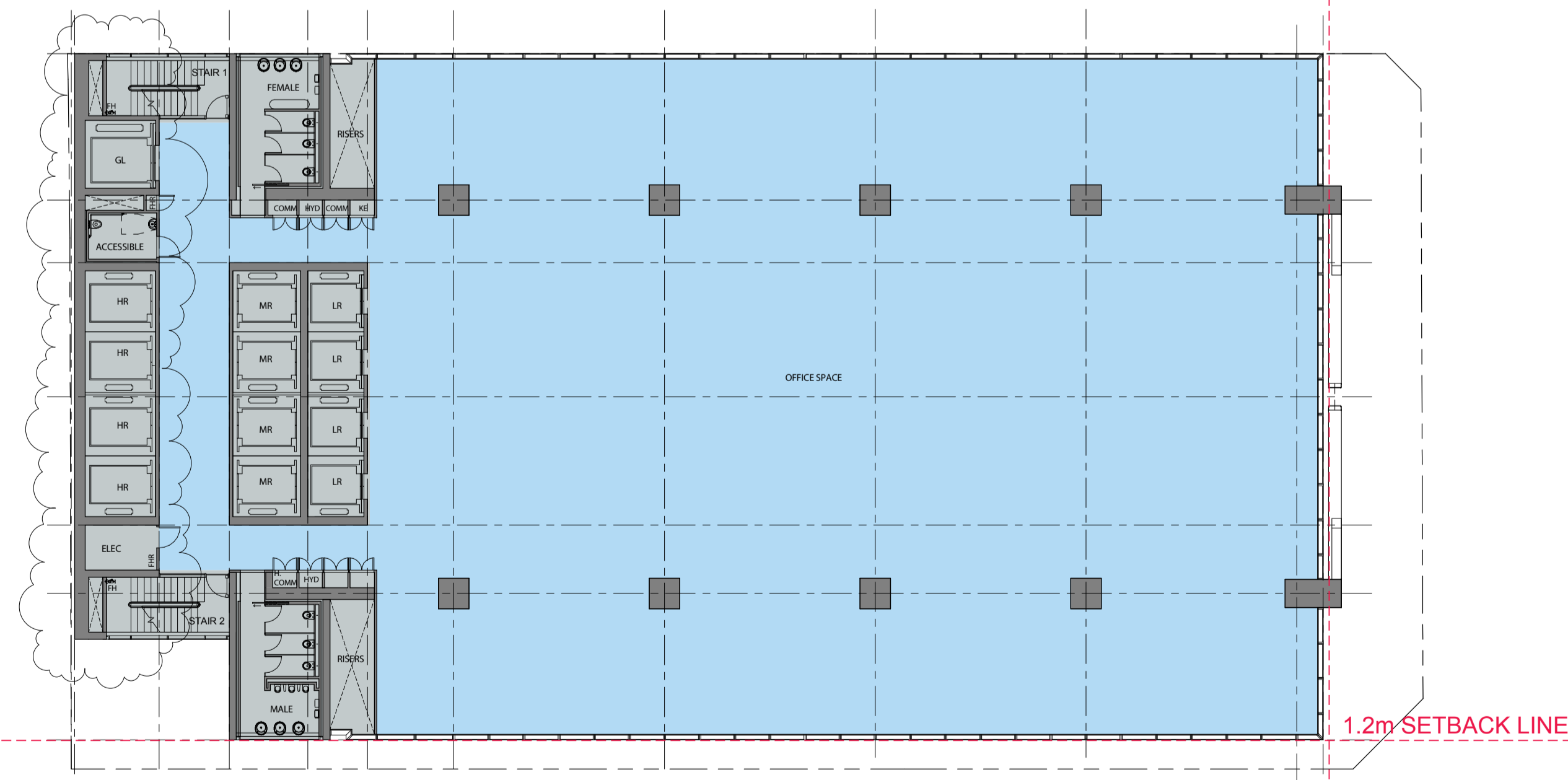
Approved: Level 20 - Low Rise Transfer Level  
 FFL: 108.20  
 GFA: 1036 m<sup>2</sup>  
 GBA: 1198 m<sup>2</sup>



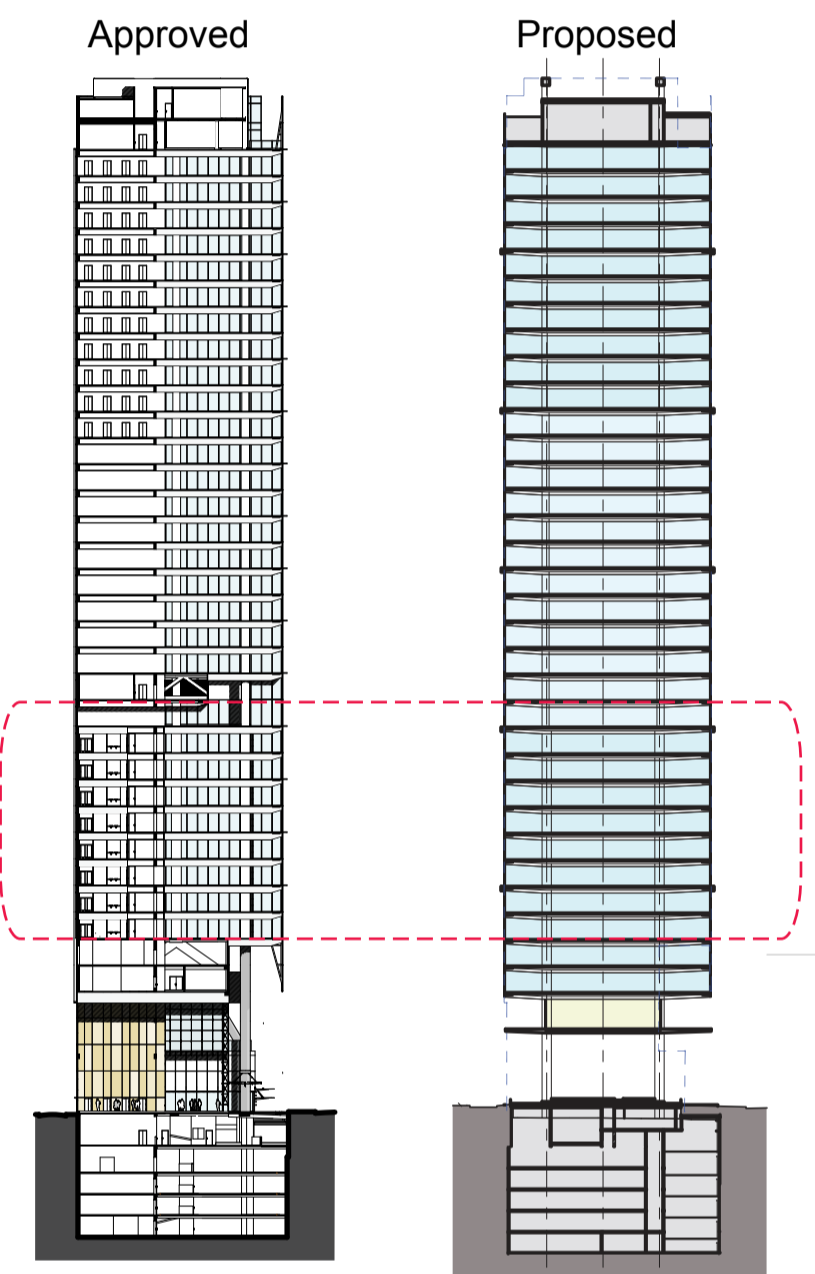
Proposed: Level 12 - Mid Rise/Lift Overrun  
 FFL: 108.00  
 GFA: 1334 m<sup>2</sup>  
 GBA: 1443 m<sup>2</sup>



Approved: Level 12-19 - Low Rise Levels  
 L12 FFL: 78.20  
 8 Floor @ 3.75m  
 GFA: 1275 m<sup>2</sup>  
 GBA: 1414 m<sup>2</sup>



Proposed: Level 4-10 - Low Rise Levels  
 Level 11 - Low Rise Transfer Level (Plan Similar)  
 L4 FFL: 78.00  
 8 Floor @ 3.75m  
 GFA: 1334 m<sup>2</sup>  
 GBA: 1443 m<sup>2</sup>



client



architectus™

Architectus Sydney  
 Level 3 341 George Street  
 Sydney NSW 2000  
 T (61 2) 8282 8400  
 F (61 2) 8252 9600  
 sydney@architectus.com.au  
 ABN 11 098 489 448

project  
 100 Mount Street, North Sydney

drawing  
 Comparison with Approved Scheme -  
 Level 4-11 + Level 12

scale 1:400 @ A3, 1:200 @ A1 drawing no.  
 drawn - DA144  
 checked MC issue  
 project no 110059 B

4.2m SETBACK LINE

4.2m SETBACK LINE