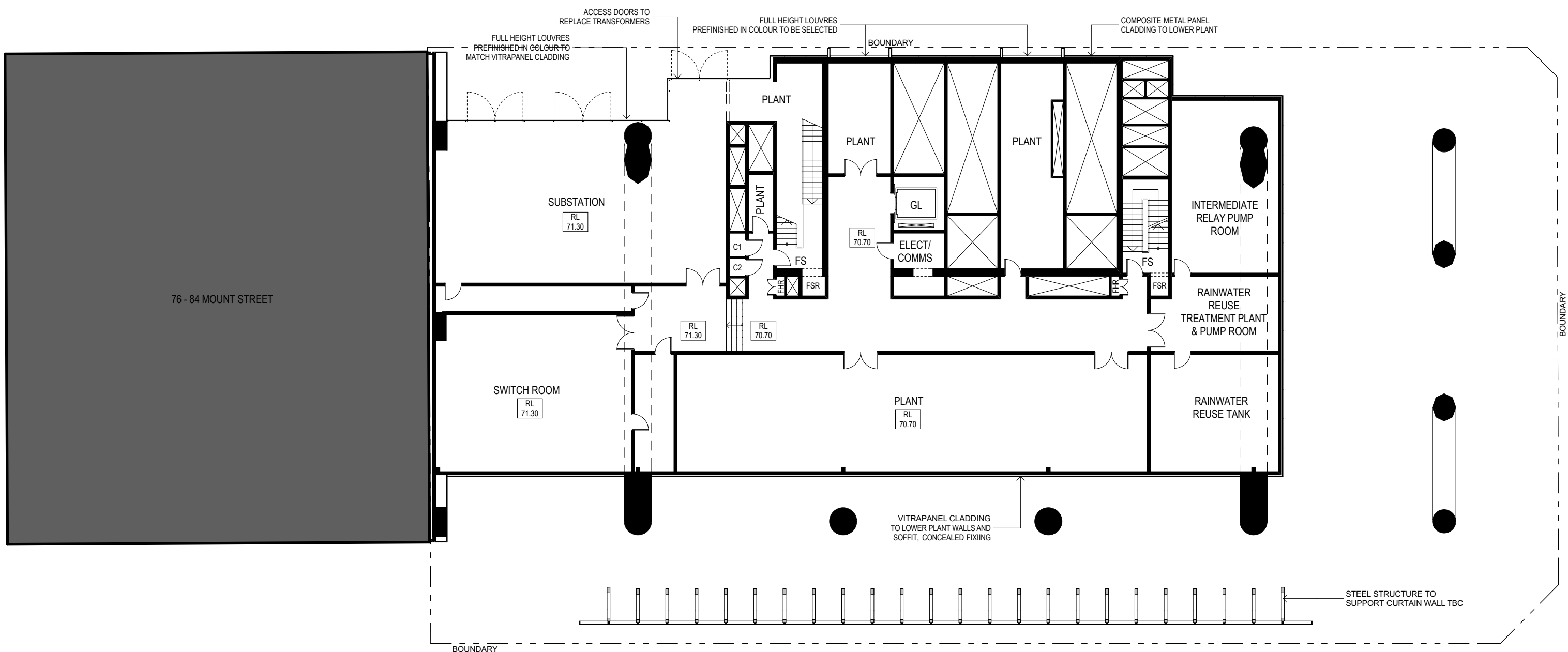
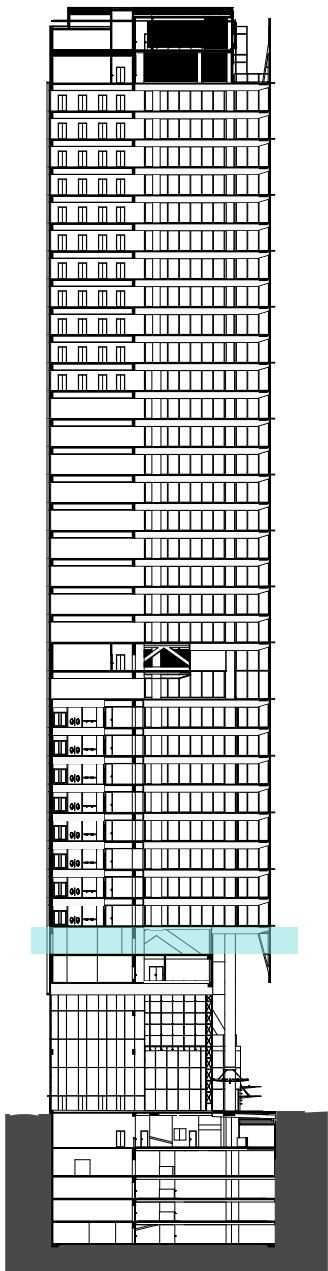
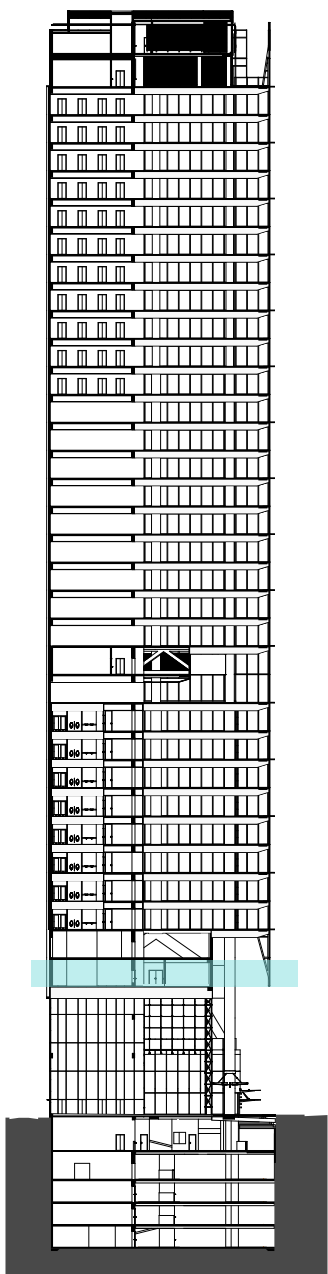


LEVEL 11 - LOW PLANT



LEVEL 10 - LOW PLANT



B A	15/12/09	PPR		CLIENT	 the property, the people, the vision	ARCHITECTS	PROJECT	DRAWING TITLE	SCALE:	DATE:	CHECKED:
	15/05/09	PART 3A SUBMISSION									
No	DATE	REVISION / ISSUE DETAILS		LEVEL 4, 100 ARTHUR STREET NORTH SYDNEY, NSW 2060 P: 02 9903 0300 F: 02 9903 0333 W: www.laingorourke.com.au	LEVEL 5, 90 MOUNT STREET NORTH SYDNEY, NSW 2060 P: 02 9903 0300 F: 02 9903 0333 W: www.delmeg.com.au	110 WALKER STREET NORTH SYDNEY 2060 T: 02 9956 2666 F: 02 9959 3015 info@rice-daubney.com.au www.rice-daubney.com.au the rice daubney group (nsw) Pty Ltd - abn: 77 001 350 769 rice daubney trading trust - abn: 56 880 304 993	100 MOUNT ST DEVELOPMENT North Sydney NSW 2060	LEVELS 10 & 11 Low Plant Floor Plans	1:200 @ A1	MARCH 09	SMA
									PROJECT NUMBER:	DRAWING NUMBER:	REVISION
									08001	DA 15	B
THIS DOCUMENT IS THE COPYRIGHT OF RICE DAUBNEY (NSW) Pty Ltd. ALL INFORMATION ILLUSTRATED ON THIS DOCUMENT IS TO BE CHECKED AND VERIFIED ON SITE IN THE EVENT OF DISCREPANCIES REFER TO ARCHITECT PRIOR TO COMMENCEMENT OF THE WORK. DO NOT SCALE DRAWINGS MANUALLY OR ELECTRONICALLY.											