

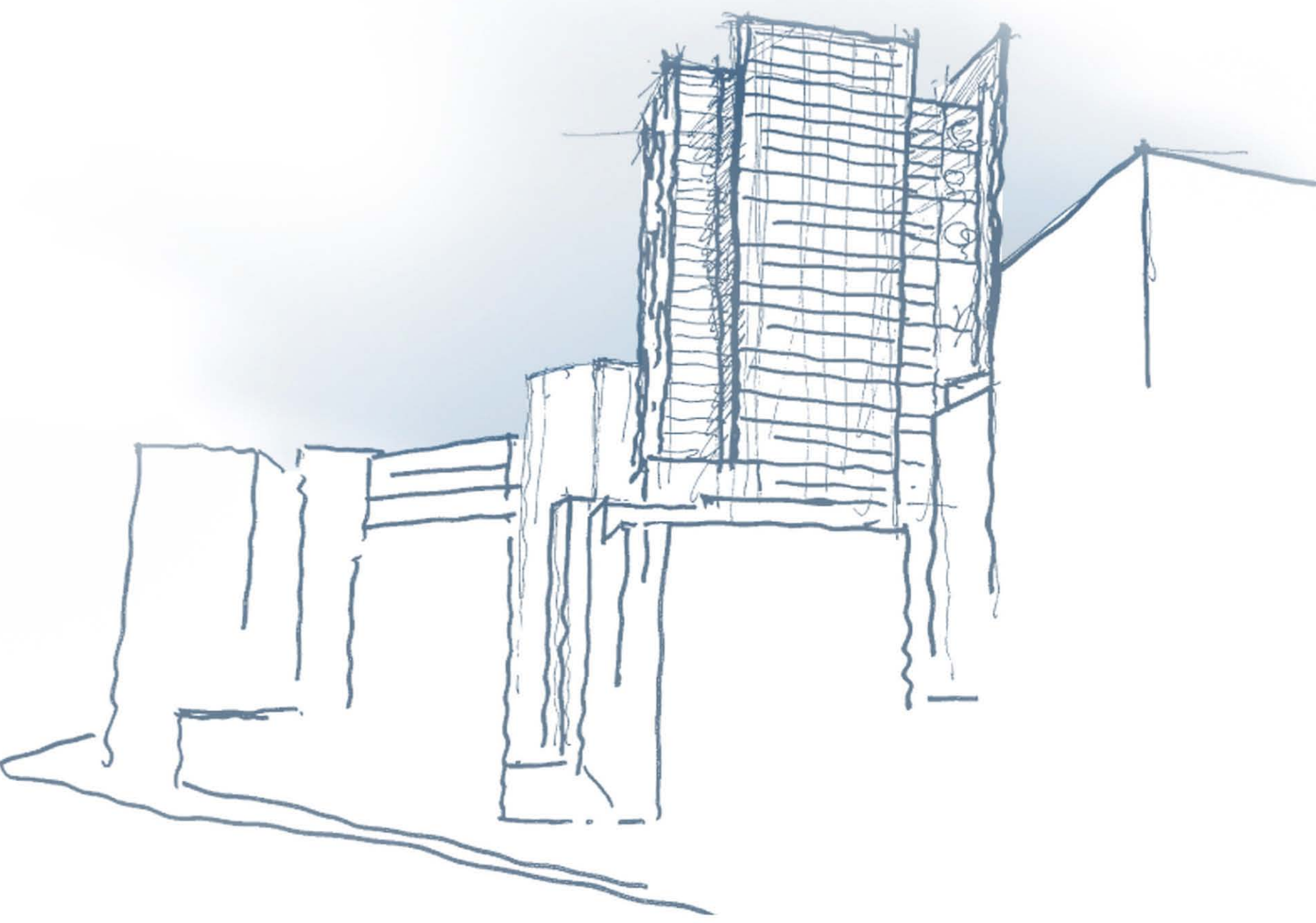
100 MOUNT

PART 3A PPR SUBMISSION

100 Mount Street is defined by a strong simple volume with an expressed core to the north and two cantilevered projections to the east and south that take advantage of the harbour views and give a dramatic presentation to the building. The southern projection softens the broad length of the elevation contributing in an elegant balance of planes and proportions. The eastern projection, which occurs above the double height sky garden level, takes advantage of its slenderness to reinforce the 5m cantilever on this facade.

The two 'boxes' on the east (low rise) and west (mid & high rises), with vertical sun shading in a staggered pattern, are like two big windows in the city and represent the two open ends of the main volume.

The overall combination of different building components emphasises the building's elegance and slenderness whilst reinforcing the vertical proportions of the tower, in keeping with its location in the Heart of the CBD holding a corner position on two dominant North Sydney streets.



DRAWING TITLE

No.

COVER PAGE AND DRAWING REGISTER	DA 00
PHOTOMONTAGE - Corner of Mount and Walker Streets	DA 01
PHOTOMONTAGE - View up Walker Street	DA 02
PHOTOMONTAGE - View from Victoria Cross	DA 03
PHOTOMONTAGE - Distant views - Pyrmont and Neutral Bay	DA 04
PHOTOMONTAGE AND SECTION	DA 05
PHOTOMONTAGE AND PERSPECTIVES	DA 06
PHOTOMONTAGE - View up Walker Street, Close up	DA 07
PHOTOMONTAGE - View down Walker Street	DA 08
LOCATION AND SURVEY PLAN	DA 09
LEVELS 1, 2 & 3 - Basements 3, 4 & 5 Floor Plans	DA 10
LEVELS 4 & 5 - Basements 1 & 2 Floor Plans	DA 11
PODIUM INTRODUCTION PAGE	DA 12
LEVEL 6 - Ground Floor Plan	DA 13
LEVELS 7, 8 & 9 - Upper Retail, Roof and Void Floor Plans	DA 14
LEVELS 10 & 11 - Low Plant Floor Plans	DA 15
TOWER INTRODUCTION PAGE	DA 16
LEVELS 14, 20 & 21 - Typical LR & Mid Plant Floor Plans	DA 17
LEVELS 23, 31 & 36 - Typical MR, HR & Transfer Floor Plans	DA 18
LEVELS 43, 44 & 45 - High Plant & Roof plans	DA 19
NORTH ELEVATION	DA 20
SOUTH ELEVATION	DA 21
EAST ELEVATION	DA 22
WEST ELEVATION	DA 23
PODIUM ELEVATIONS	DA 24
NORTH/SOUTH SECTION	DA 25
EAST/WEST SECTION	DA 26
SETBACKS	DA 27



B A	15/12/09 15/05/09	PPR PART 3A SUBMISSION		CLIENT	ARCHITECTS	PROJECT	DRAWING TITLE	SCALE: N/A	DATE: MARCH 09	CHECKED: SMA
No.	DATE	REVISION / ISSUE DETAILS		LEVEL 4, 100 ARTHUR STREET NORTH SYDNEY NSW 2060 P: 02 9953 0300 F: 02 9953 0333 W: www.laingorourke.com.au	LEVEL 5, 90 MOUNT STREET NORTH SYDNEY NSW 2060 P: 02 9953 0300 F: 02 9953 0333 W: www.delmege.com.au	110 WALKER STREET NORTH SYDNEY 2060 T: 02 9956 2066 F: 02 9959 3015 info@rice-daubney.com.au www.rice-daubney.com.au the rice daubney group (nsaw) Pty Ltd - abn: 77 001 350 769 rice daubney trading trust - abn: 56 880 304 993	100 MOUNT ST DEVELOPMENT North Sydney NSW 2060	08001	DA 00	B