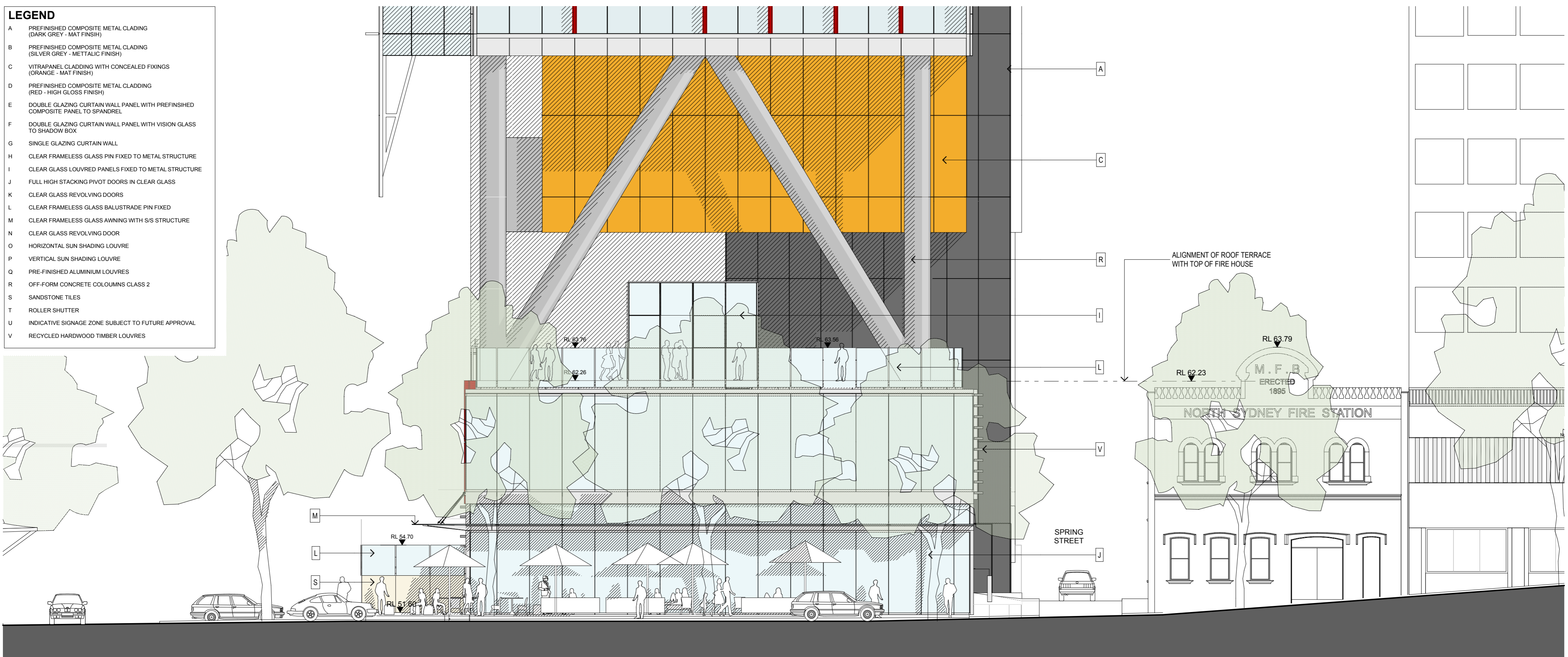
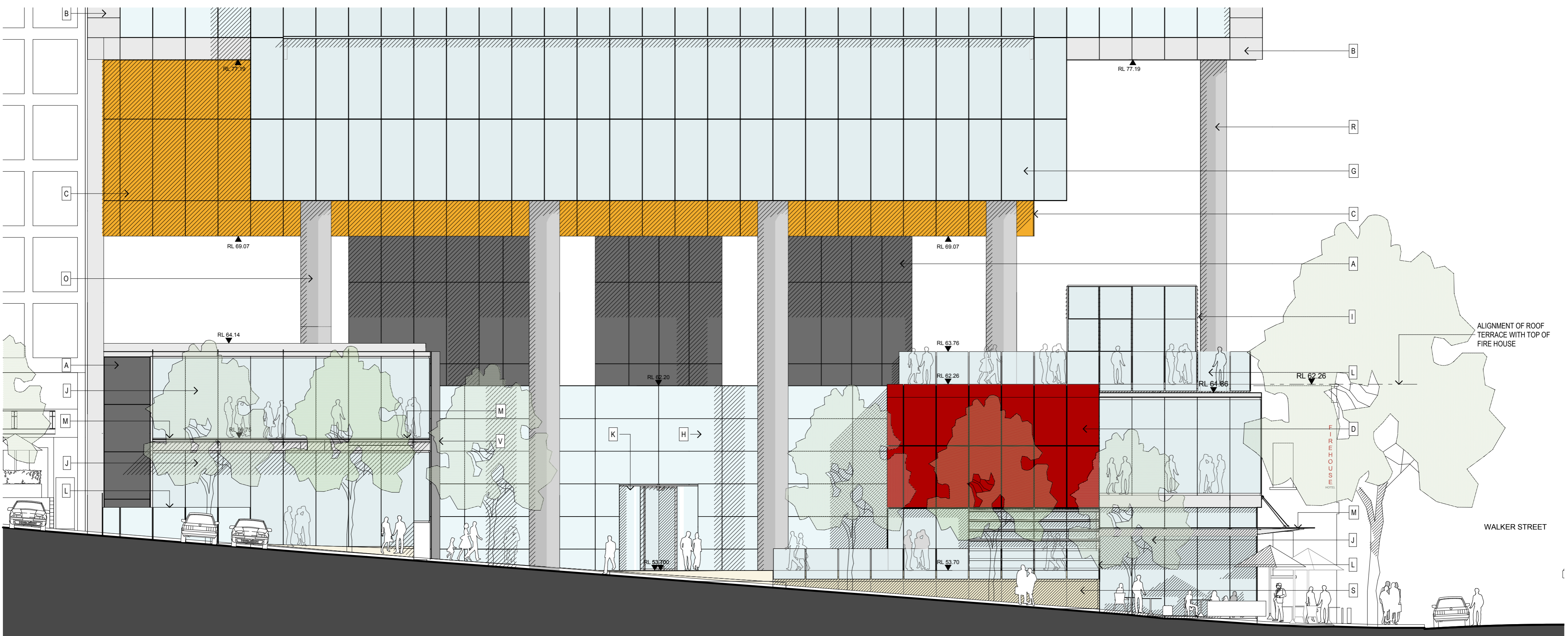


PODIUM NORTH

- LEGEND**
- A PREFINISHED COMPOSITE METAL CLADDING (DARK GREY - MATT FINISH)
 - B PREFINISHED COMPOSITE METAL CLADDING (SILVER GREY - METALLIC FINISH)
 - C VITRAPANEL CLADDING WITH CONCEALED FIXINGS (ORANGE - MATT FINISH)
 - D PREFINISHED COMPOSITE METAL CLADDING (RED - HIGH GLOSS FINISH)
 - E DOUBLE GLAZING CURTAIN WALL PANEL WITH PREFINISHED COMPOSITE PANEL TO SPANDREL
 - F DOUBLE GLAZING CURTAIN WALL PANEL WITH VISION GLASS TO SHADOW BOX
 - G SINGLE GLAZING CURTAIN WALL
 - H CLEAR FRAMELESS GLASS PIN FIXED TO METAL STRUCTURE
 - I CLEAR GLASS LOUVRED PANELS FIXED TO METAL STRUCTURE
 - J FULL HIGH STACKING PIVOT DOORS IN CLEAR GLASS
 - K CLEAR GLASS REVOLVING DOORS
 - L CLEAR FRAMELESS GLASS BALUSTRADE PIN FIXED
 - M CLEAR FRAMELESS GLASS RAILING WITH SIS STRUCTURE
 - N CLEAR GLASS REVOLVING DOOR
 - O HORIZONTAL SUN SHADING LOUVRE
 - P VERTICAL SUN SHADING LOUVRE
 - Q PREFINISHED ALUMINIUM LOUVRES
 - R OFF-FORM CONCRETE COLOUMNS CLASS 2
 - S SANDSTONE TILES
 - T ROLLER SHUTTER
 - U INDICATIVE SIGNAGE ZONE SUBJECT TO FUTURE APPROVAL
 - V RECYCLED HARDWOOD TIMBER LOUVRES



PODIUM EAST



PODIUM SOUTH

<p>CLIENT</p> <p>LAING O'ROURKE</p> <p>LEVEL 4, 100 ARTHUR STREET NORTH SYDNEY, NSW 2060 P: 02 9903 0300 F: 02 9903 0333 W: www.laingorourke.com.au</p>		<p>ARCHITECTS</p> <p>RICE DAUBNEY ANALYSING CREATING AND IMPLEMENTING ARCHITECTURE</p> <p>110 WALKER STREET NORTH SYDNEY 2060 T: 02 9956 2666 F: 02 9959 3015 info@ricedaubney.com.au www.ricedaubney.com.au the rice daubney group (NSW) Pty Ltd - abn: 77 001 350 769 rice daubney trading trust - abn: 58 880 304 993</p>		<p>PROJECT</p> <p>100 MOUNT ST DEVELOPMENT North Sydney NSW 2060</p>		<p>DRAWING TITLE</p> <p>PODIUM ELEVATIONS North, East & South Elevations</p>		<p>SCALE: 1:200</p> <p>DATE: MARCH 09</p> <p>PROJECT NUMBER: 08001</p> <p>DRAWING NUMBER: DA 20</p>		<p>CHECKED: SMA</p> <p>REVISION: A</p>	
<p>15/05/09 PART 3A SUBMISSION</p>		<p>LEVEL 4, 100 ARTHUR STREET NORTH SYDNEY, NSW 2060 P: 02 9903 0300 F: 02 9903 0333 W: www.laingorourke.com.au</p>		<p>110 WALKER STREET NORTH SYDNEY 2060 T: 02 9956 2666 F: 02 9959 3015 info@ricedaubney.com.au www.ricedaubney.com.au the rice daubney group (NSW) Pty Ltd - abn: 77 001 350 769 rice daubney trading trust - abn: 58 880 304 993</p>		<p>100 MOUNT ST DEVELOPMENT North Sydney NSW 2060</p>		<p>PODIUM ELEVATIONS North, East & South Elevations</p>		<p>1:200 MARCH 09</p> <p>08001 DA 20 A</p>	