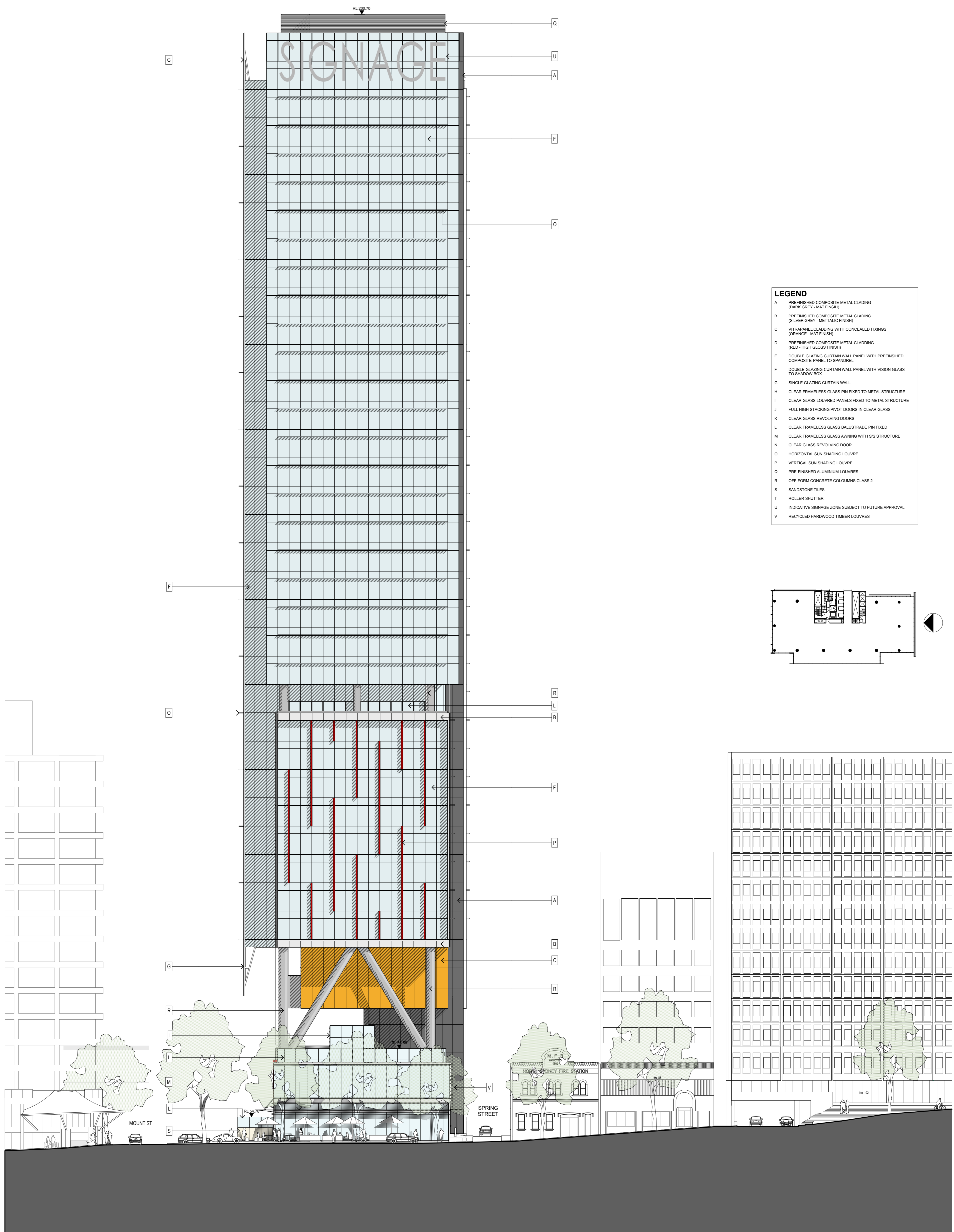
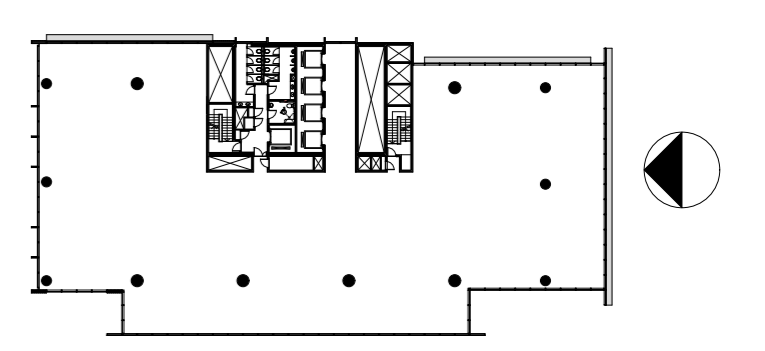


- RL 200.700 ▽
- RL 199.500 ▽
- LEVEL 44 - ROOF
- RL 195.100 ▽
- LEVEL 43 - HIGH PLANT
- RL 190.700 ▽
- LEVEL 42 - HIGH PLANT
- RL 186.950 ▽
- LEVEL 41 - HR
- RL 183.200 ▽
- LEVEL 40 - HR
- RL 179.450 ▽
- LEVEL 39 - HR
- RL 175.700 ▽
- LEVEL 38 - HR
- RL 171.950 ▽
- LEVEL 37 - HR
- RL 169.200 ▽
- LEVEL 36 - HR
- RL 164.450 ▽
- LEVEL 35 - HR/RT
- RL 160.700 ▽
- LEVEL 34 - HR/LCR
- RL 156.950 ▽
- LEVEL 33 - HR/LMR
- RL 153.200 ▽
- LEVEL 32 - HR/LOR
- RL 149.450 ▽
- LEVEL 31 - MR/TF
- RL 145.700 ▽
- LEVEL 30 - MR
- RL 141.950 ▽
- LEVEL 29 - MR
- RL 138.200 ▽
- LEVEL 28 - MR
- RL 134.450 ▽
- LEVEL 27 - MR
- RL 130.700 ▽
- LEVEL 26 - MR
- RL 126.950 ▽
- LEVEL 25 - MR
- RL 123.200 ▽
- LEVEL 24 - MR
- RL 119.450 ▽
- LEVEL 23 - MR
- RL 115.700 ▽
- LEVEL 22 - MR/LMR
- RL 111.950 ▽
- LEVEL 21 - MID PLANT/LOR
- RL 108.200 ▽
- LEVEL 20 - SKY GARDEN/TF
- RL 104.450 ▽
- LEVEL 19 - LR
- RL 100.700 ▽
- LEVEL 18 - LR
- RL 96.950 ▽
- LEVEL 17 - LR
- RL 93.200 ▽
- LEVEL 16 - LR
- RL 89.450 ▽
- LEVEL 15 - LR
- RL 85.700 ▽
- LEVEL 14 - LR
- RL 81.950 ▽
- LEVEL 13 - LR
- RL 78.200 ▽
- LEVEL 12 - LR
- RL 74.450 ▽
- LEVEL 11 - LOW PLANT
- RL 70.700 ▽
- LEVEL 10 - LOW PLANT
- RL 66.480 ▽
- LEVEL 9 - VOID
- RL 62.260 ▽
- LEVEL 8 - RETAIL ROOF
- RL 57.150 ▽
- LEVEL 7 - UPPER RETAIL
- RL 53.600 ▽
- LEVEL 6 - GROUND
- RL 50.300 ▽
- LEVEL 5 - BASEMENT 1
- RL 47.300 ▽
- LEVEL 4 - BASEMENT 2
- RL 44.300 ▽
- LEVEL 3 - BASEMENT 3
- RL 41.300 ▽
- LEVEL 2 - BASEMENT 4



LEGEND

- A PREFINISHED COMPOSITE METAL CLADDING (DARK GREY - MAT FINISH)
- B PREFINISHED COMPOSITE METAL CLADDING (SILVER GREY - METALLIC FINISH)
- C VITRAPANEL CLADDING WITH CONCEALED FIXINGS (ORANGE - MAT FINISH)
- D PREFINISHED COMPOSITE METAL CLADDING (RED - HIGH GLOSS FINISH)
- E DOUBLE GLAZING CURTAIN WALL PANEL WITH PREFINISHED COMPOSITE PANEL TO SPANDREL
- F DOUBLE GLAZING CURTAIN WALL PANEL WITH VISION GLASS TO SHADOW BOX
- G SINGLE GLAZING CURTAIN WALL
- H CLEAR FRAMELESS GLASS PIN FIXED TO METAL STRUCTURE
- I CLEAR GLASS LOUVER PANELS FIXED TO METAL STRUCTURE
- J FULL HIGH STACKING PIVOT DOORS IN CLEAR GLASS
- K CLEAR GLASS REVOLVING DOORS
- L CLEAR FRAMELESS GLASS BALUSTRADE PIN FIXED
- M CLEAR FRAMELESS GLASS AWNING WITH SIS STRUCTURE
- N CLEAR GLASS REVOLVING DOOR
- O HORIZONTAL SUN SHADING LOUVRE
- P VERTICAL SUN SHADING LOUVRE
- Q PRE-FINISHED ALUMINIUM LOUVRES
- R OFF-FORM CONCRETE COLOUMNS CLASS 2
- S SANDSTONE TILES
- T ROLLER SHUTTER
- U INDICATIVE SIGNAGE ZONE SUBJECT TO FUTURE APPROVAL
- V RECYCLED HARDWOOD TIMBER LOUVRES



<p>CLIENT</p> <p>LAING O'ROURKE</p> <p>LEVEL 4, 100 ARTHUR STREET NORTH SYDNEY, NSW 2060 P: 02 9903 0300 F: 02 9903 0333 W: www.laingorourke.com.au</p>		<p>ARCHITECTS</p> <p>RICE DAUBNEY ANALYSING CREATING AND IMPLEMENTING ARCHITECTURE</p> <p>110 WALKER STREET NORTH SYDNEY 2060 T: 02 9956 2666 F: 02 9959 3015 rd@ricedaubney.com.au www.ricedaubney.com.au the rice daubney group (nsw) Pty Ltd - abn: 77 001 350 769 rice daubney trading trust - abn: 56 880 304 993</p>		<p>PROJECT</p> <p>100 MOUNT ST DEVELOPMENT North Sydney NSW 2060</p>		<p>DRAWING TITLE</p> <p>EAST ELEVATION</p>		<p>SCALE: 1:250</p> <p>DATE: MARCH 09</p> <p>PROJECT NUMBER: 08001</p> <p>DRAWING NUMBER: DA 18</p>		<p>CHECKED: SMA</p> <p>REVISION: A</p>	
<p>LEVEL 4 - 100 ARTHUR STREET NORTH SYDNEY, NSW 2060 P: 02 9903 0300 F: 02 9903 0333 W: www.laingorourke.com.au</p>		<p>LEVEL 5, 90 MOUNT STREET NORTH SYDNEY, NSW 2060 P: 02 9922 7722 F: 02 9922 3000 W: www.delmege.com.au</p>		<p>110 WALKER STREET NORTH SYDNEY 2060 T: 02 9956 2666 F: 02 9959 3015 rd@ricedaubney.com.au www.ricedaubney.com.au the rice daubney group (nsw) Pty Ltd - abn: 77 001 350 769 rice daubney trading trust - abn: 56 880 304 993</p>		<p>100 MOUNT ST DEVELOPMENT North Sydney NSW 2060</p>		<p>SCALE: 1:250</p> <p>DATE: MARCH 09</p> <p>PROJECT NUMBER: 08001</p> <p>DRAWING NUMBER: DA 18</p>		<p>CHECKED: SMA</p> <p>REVISION: A</p>	