

100 MOUNT

TOWER INTRODUCTION

From a distance it is the tower component of the building that has the greatest potential to improve its context. When viewed from the south the rectilinear form of the tower is masked by the screen that emphasises the southern projection picking up the street alignment of the MLC Building on Mount Street. This screen sails past the corners of the 'pop out' to create an element of lightness and transparency that gives the building depth and texture. Because of its southern aspect the glazing of the screen is lighter and clearer, with floor to floor glazing to maximise views towards the harbour and allow interior activity to be read from the street, enlivening the building. This lightness and the proportions of this face are of critical importance in reducing the bulk of the building from this aspect. When viewed from the east the slender proportion of the cantilevered glass volume, that is the mid and high rise floors of the tower, stands out from the surroundings and gives the building a dramatic reference. The eastern 'pop out' is also masked by a screen that sails past the corners to reinforce lightness and transparency.



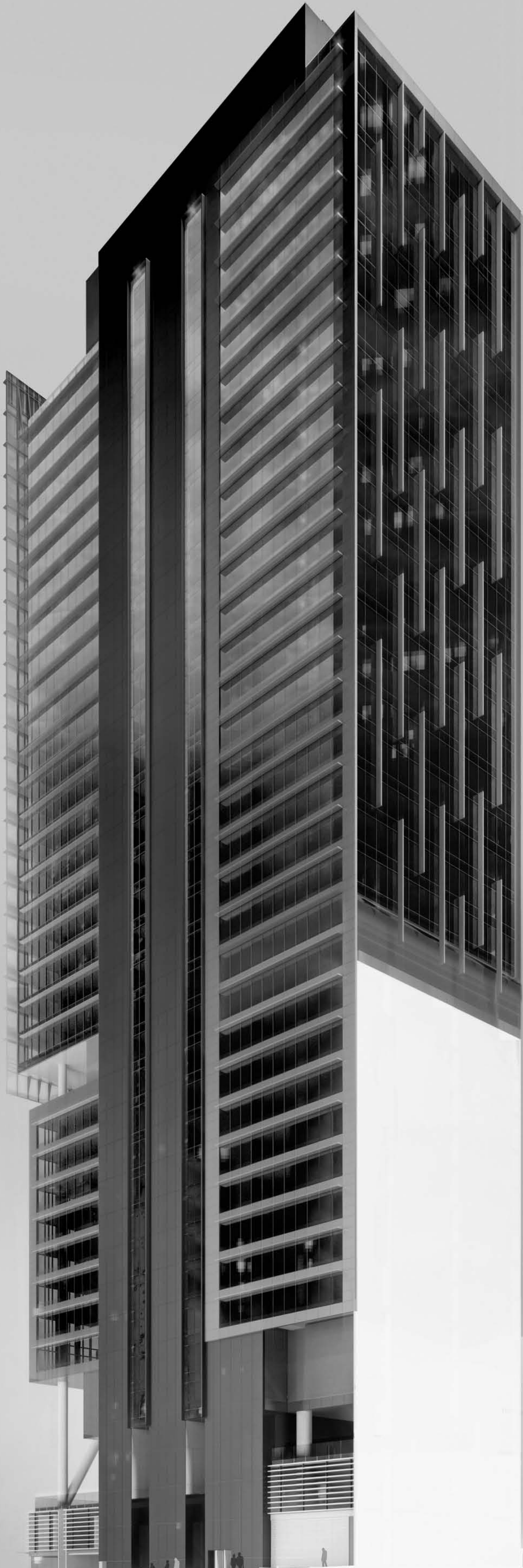
Detail view of northwest corner






Detail view of southeast corner



Detail view of east cantilever



			<div><div><div>CLIENT</div><div><div><div>LAING O'ROURKE</div></div><div><div>LEVEL 4, 100 ARTHUR STREET NORTH SYDNEY NSW 2060 P: 02 8903 0300 F: 02 8903 0333 W: www.laingorourke.com.au</div></div></div><div><div><div>Delmege</div></div><div><div>the property, the people, the vision</div><div><div>LEVEL 5, 90 MOUNT STREET NORTH SYDNEY NSW 2060 P: 02 8922 7722 F: 02 8922 3900 W: www.delmege.com.au</div></div></div></div></div></div>			<div><div><div>ARCHITECTS</div><div><div><div>RICE DAUBNEY</div></div><div><div>ANALYSING CREATING AND IMPLEMENTING ARCHITECTURE</div><div><div>110 WALKER STREET NORTH SYDNEY 2060 T: 02 8956 2886 F: 02 8959 3015 info@riceaubney.com.au www.riceaubney.com.au the rice daubney group (nsw) Pty Ltd - abn: 77 001 350 769 rice daubney trading trust - abn: 56 880 304 993</div></div></div></div></div></div>			<div><div><div>PROJECT</div><div><div>100 MOUNT ST DEVELOPMENT</div><div>North Sydney NSW 2060</div></div></div></div>			<div><div><div>DRAWING TITLE</div><div>TOWER INTRODUCTION</div></div></div>			<div><div><div>SCALE: N/A</div><div>DATE: MARCH 09</div><div>CHECKED: SMA</div></div></div>		
<div><div><div>A</div><div>15/05/09</div><div>PART 3A SUBMISSION</div></div></div>									<div><div><div>PROJECT NUMBER: 08001</div><div>DRAWING NUMBER: DA 12</div><div>REVISION: A</div></div></div>								
<div><div><div>No</div><div>DATE</div><div>REVISION / ISSUE DETAILS</div></div></div>									<div><div><div>THIS DOCUMENT IS THE COPYRIGHT OF RICE DAUBNEY (NSW) Pty Ltd.</div><div>ALL INFORMATION ON THIS DOCUMENT IS THE PROPERTY OF RICE DAUBNEY (NSW) Pty Ltd.</div><div>IN THE EVENT OF DISCREPANCIES BETWEEN THIS DOCUMENT AND THE WORKS, THIS DOCUMENT SHALL PREVAIL.</div><div>DO NOT SCALE DRAWINGS MANUALLY OR ELECTRONICALLY.</div></div></div>								