

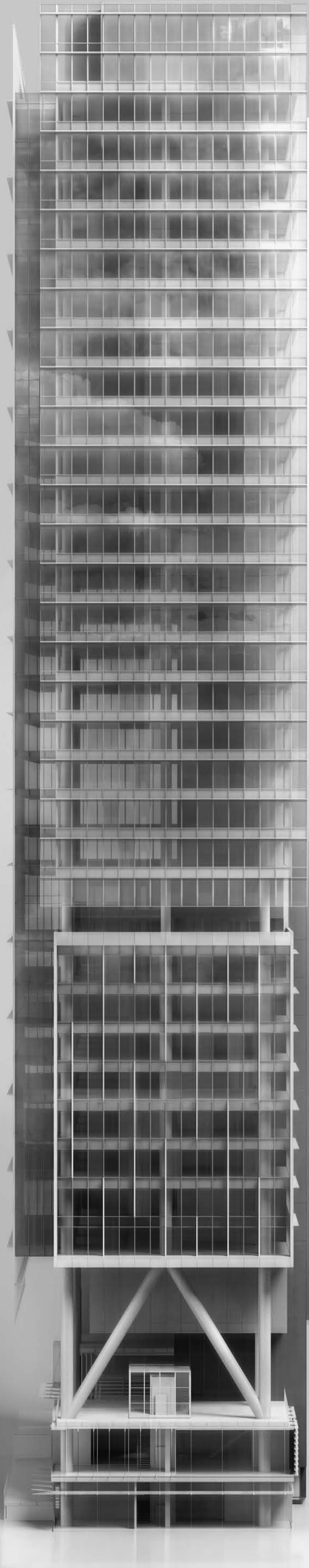
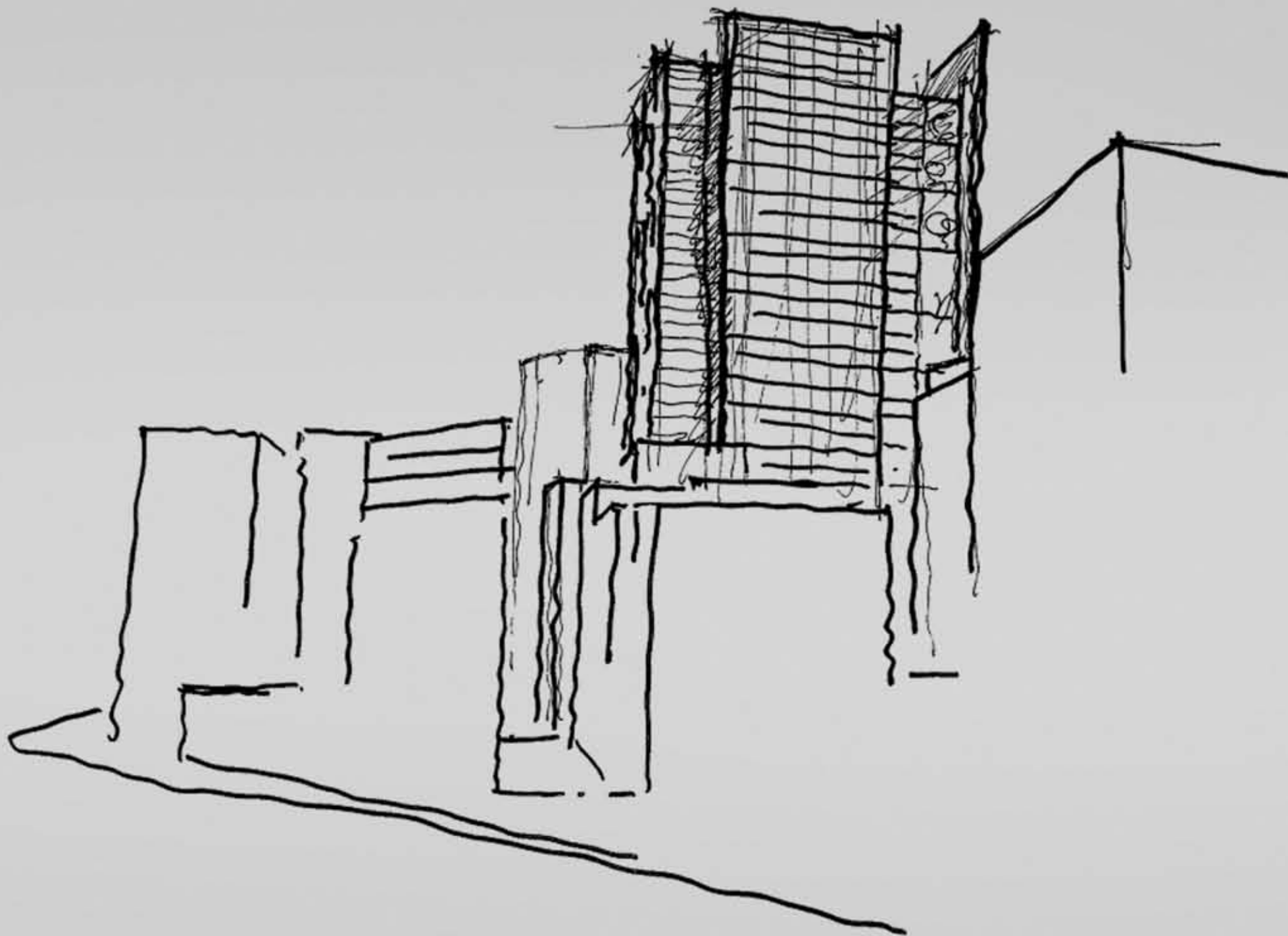
100 MOUNT

PART 3A SUBMISSION

100 Mount Street is defined by a strong simple volume with an expressed core to the north and two cantilevered projections to the east and south that take advantage of the harbour views and give a dramatic presentation to the building. The southern projection softens the broad length of the elevation contributing in an elegant balance of planes and proportions. The eastern projection, which occurs above the double height sky garden level, takes advantage of its slenderness to reinforce the 5m cantilever on this facade.

The two 'boxes' on the east (low rise) and west (mid & high rises), with vertical sun shading in a staggered pattern, are like two big windows in the city and represent the two open ends of the main volume.





The overall combination of different building components emphasises the building's elegance and slenderness whilst reinforcing the vertical proportions of the tower, in keeping with its location in the Heart of the CBD holding a corner position on two dominant North Sydney streets.



DRAWING TITLE

No.

COVER PAGE AND DRAWING REGISTER	DA 00
PHOTOMONTAGE - Corner of Mount and Walker Streets	DA 01
PHOTOMONTAGE - View up Walker Street	DA 02
PHOTOMONTAGE - View from Victoria Cross	DA 03
PHOTOMONTAGE - Distant views - Pyrmont and Neutral Bay	DA 04
LOCATION AND SURVEY PLAN	DA 05
LEVELS 1, 2 & 3 - Basements 3, 4 & 5 Floor Plans	DA 06
LEVELS 4 & 5 - Basements 1 & 2 Floor Plans	DA 07
PODIUM INTRODUCTION PAGE	DA 08
LEVEL 6 - Ground Floor Plan	DA 09
LEVELS 7, 8 & 9 - Upper Retail, Roof and Void Floor Plans	DA 10
LEVELS 10 & 11 - Low Plant Floor Plans	DA 11
TOWER INTRODUCTION PAGE	DA 12
LEVELS 14, 20 & 21 - Typical LR & Mid Plant Floor Plans	DA 13
LEVELS 23, 31 & 36 - Typical MR, HR & Transfer Floor Plans	DA 14
LEVELS 43, 44 & 45 - High Plant & Roof plans	DA 15
NORTH ELEVATION	DA 16
SOUTH ELEVATION	DA 17
EAST ELEVATION	DA 18
WEST ELEVATION	DA 19
PODIUM ELEVATIONS	DA 20
NORTH/SOUTH SECTION	DA 21
EAST/WEST SECTION	DA 22
SETBACKS	DA 23

			CLIENT		ARCHITECTS		PROJECT		DRAWING TITLE		SCALE:		DATE:		CHECKED:			
			<div><div></div><div>LEVEL 4, 100 ARTHUR STREET NORTH SYDNEY NSW 2060 P: 02 9903 0300 F: 02 9903 0333 W: www.laingorourke.com.au</div></div>		<div><div></div><div>LEVEL 5, 90 MOUNT STREET NORTH SYDNEY NSW 2060 P: 02 9922 7722 F: 02 9922 3900 W: www.delmege.com.au</div></div>		<div><div></div><div>RICE DAUBNEY ANALYSING CREATING AND IMPLEMENTING ARCHITECTURE 110 WALKER STREET NORTH SYDNEY 2060 T: 02 9556 2886 F: 02 9559 3015 rda@ricedaubney.com.au www.ricedaubney.com.au the rice daubney group (nsa) Pty Ltd - abn: 77 001 350 769 rice daubney trading trust - abn: 56 880 304 993</div></div>		<div><div></div><div>100 MOUNT ST DEVELOPMENT North Sydney NSW 2060</div></div>		COVER SHEET		N/A		MARCH 09		SMA	
											PROJECT NUMBER:		DRAWING NUMBER:		REVISION			
											08001		DA 00					
No.	DATE	REVISION / ISSUE DETAILS																