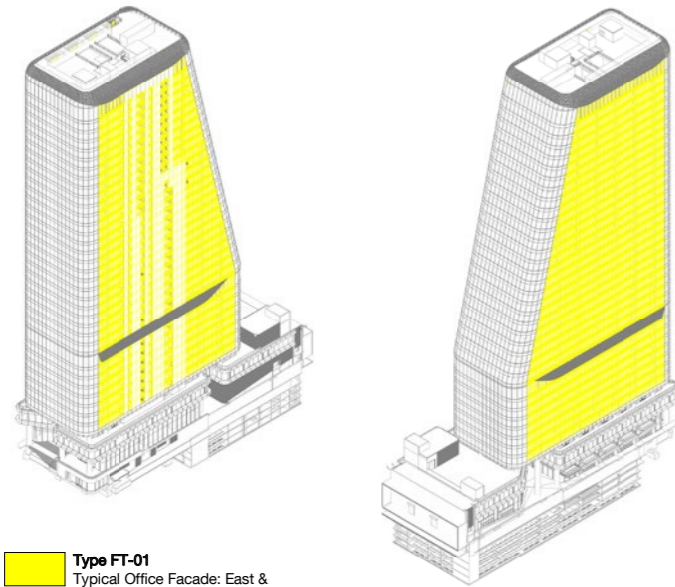


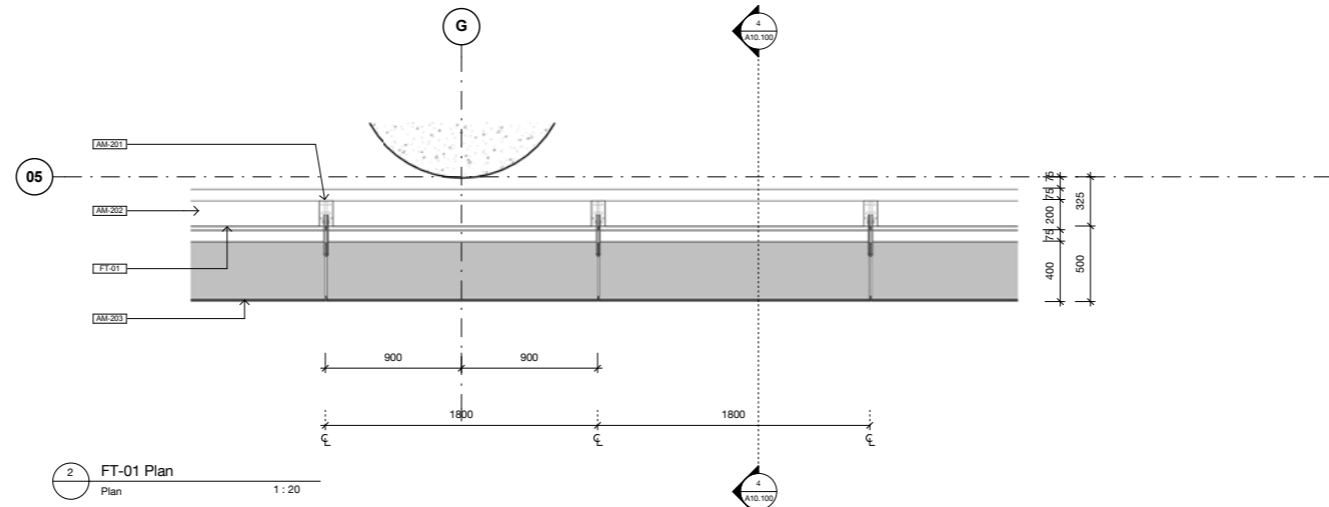
APPROVED DESIGN



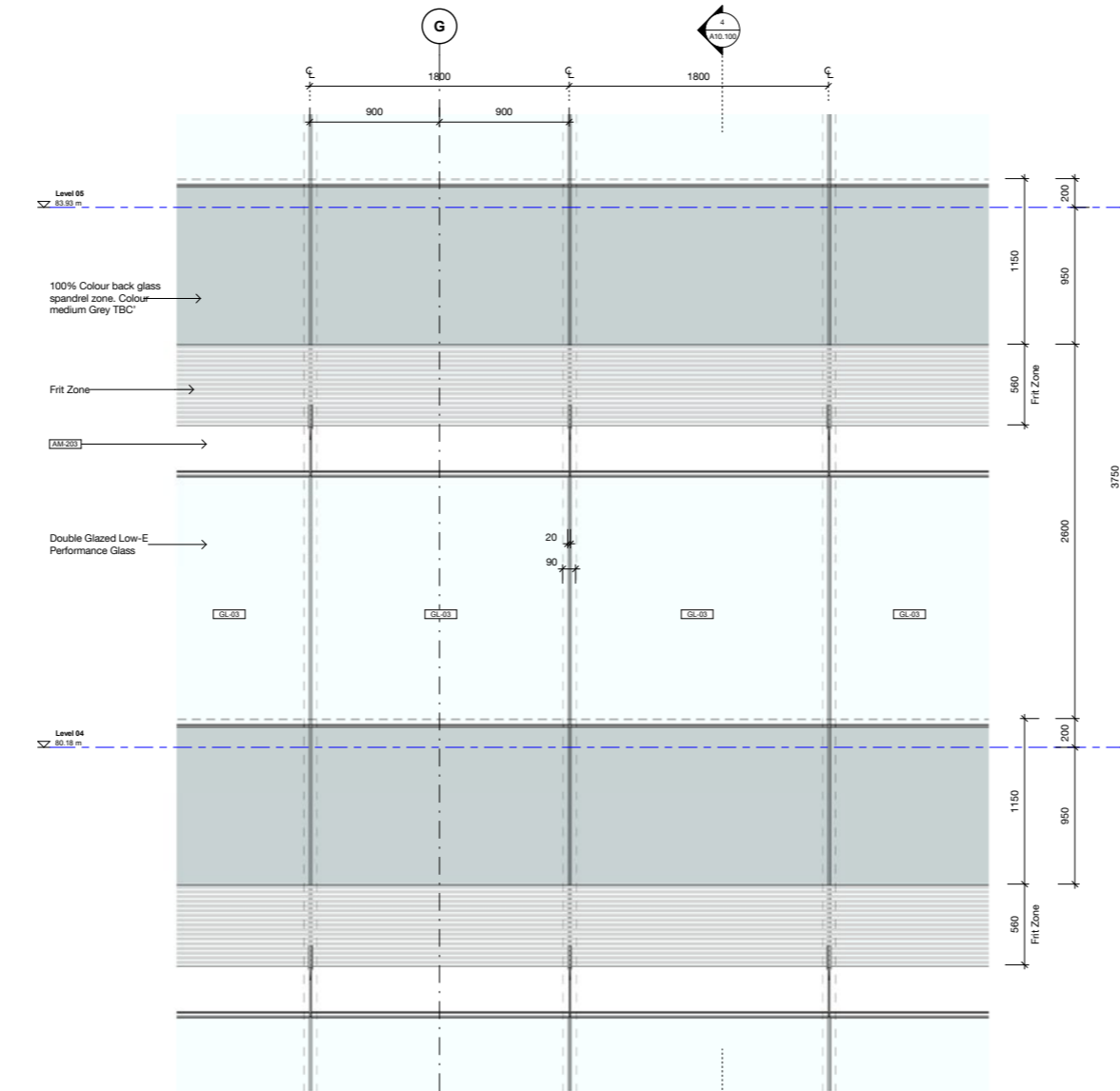
Type FT-01
Typical Office Facade: East & West

5 Facade Type - FT-01 SE Plan

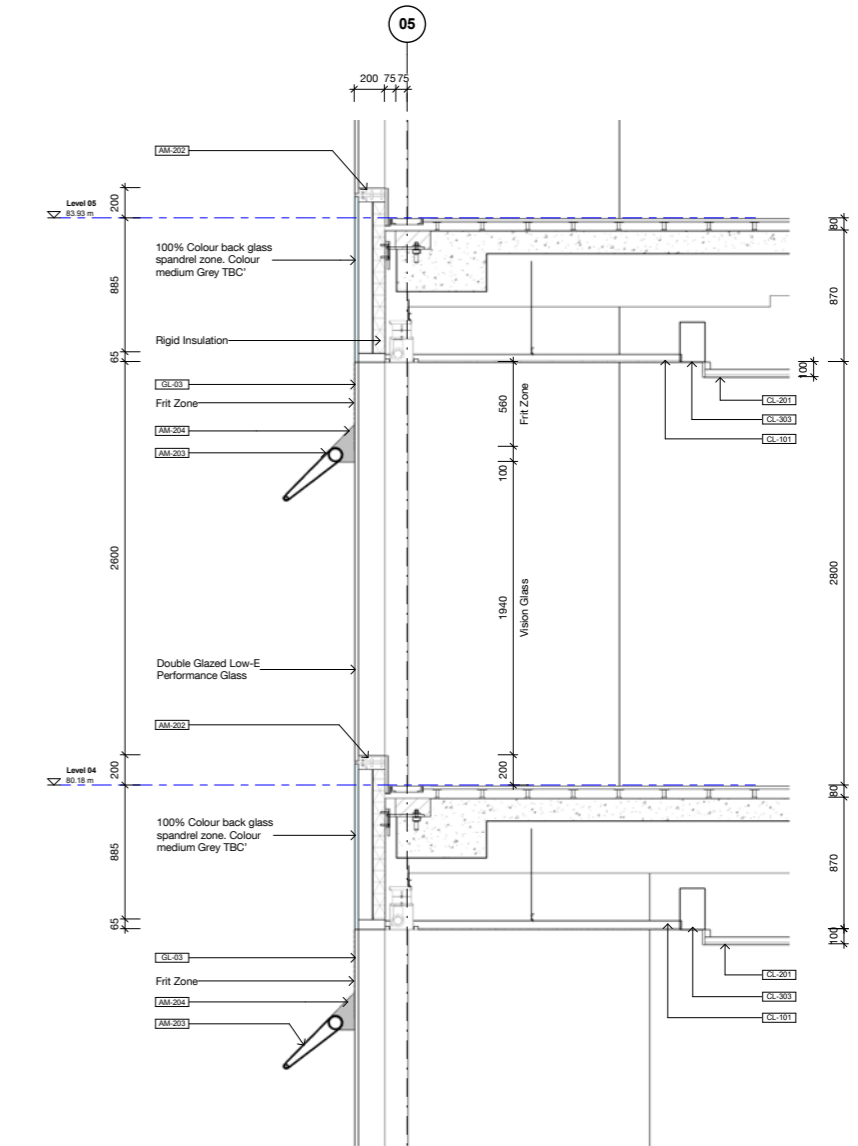
1 Facade Type - FT-01 Plan



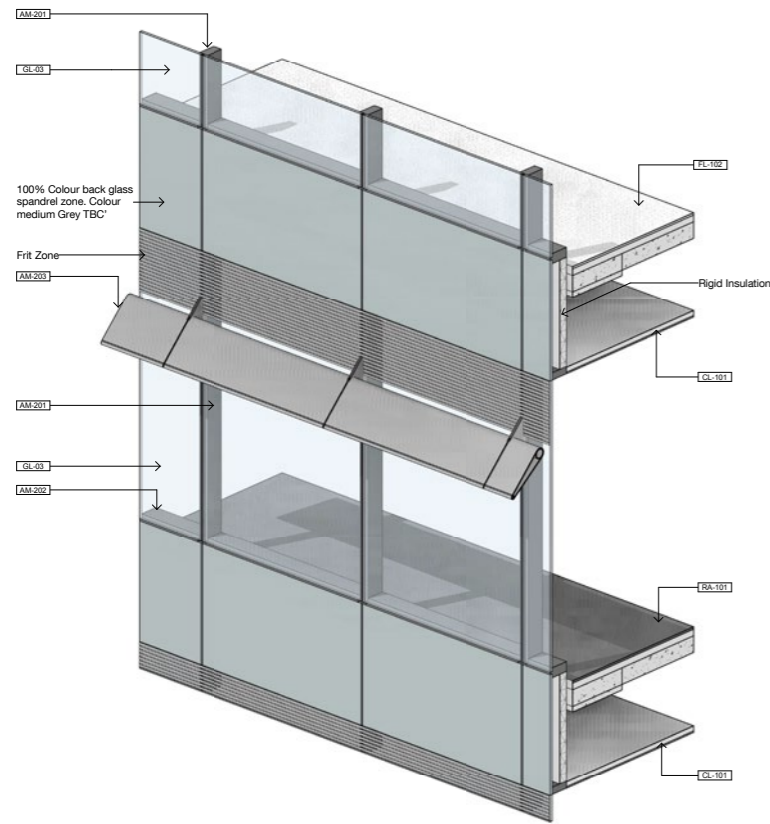
2 FT-01 Plan
Plan 1:20



3 FT-01 Elevation
Elevation 1:20



4 FT-01 Section
Section 1:20



6 FT-01
3D

50% TENDER (NOT FOR CONSTRUCTION)



1 Denison Street
Sydney, New South Wales,
Australia
TD1
Tower Facade Type FT-01 - Typical
East & West Vision Glass

Scale	1:20	@ B1
Drawn	ASL	Checked BS
Project no.	S12055	
Status	50% TENDER (NOT FOR CONSTRUCTION)	
Plot Date	01-May-17 1:15:35 PM	
Plot File		
Drawing no.	A10.100	Revision 1

Melbourne 1 Nicholson Street
Melbourne VIC 3000 Australia
T 03 8664 6200 F 03 8664 6300
email mel@batesmart.com.au
http://www.batesmart.com.au

Sydney 43 Brisbane Street
Surry Hills NSW 2010 Australia
T 02 8354 5100 F 02 8354 5199
email syd@batesmart.com.au
http://www.batesmart.com.au

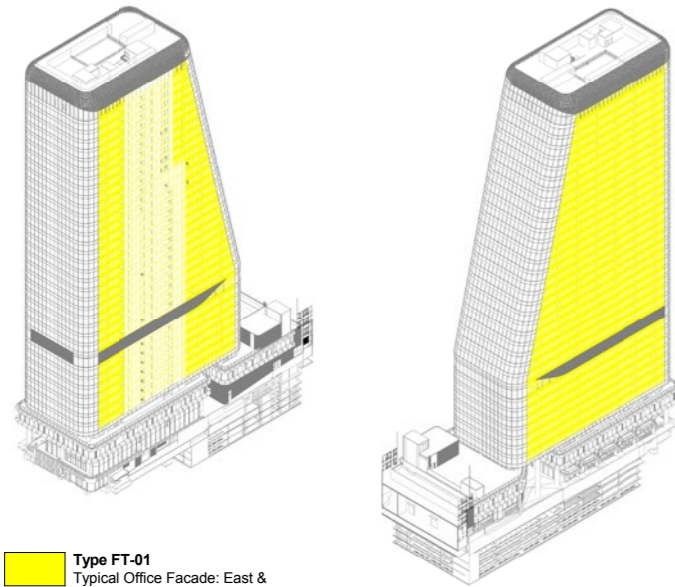
Bates Smart Pty Ltd ABN 70 004 999 400



Revision	Date	Description	Initial	Checked
1	01.05.17	50% Tender (Not for Construction)	MSL	GG

These drawings represent completion of the architectural design to approximately 50% resolution, and therefore are neither complete nor error free. The drawings should be used in conjunction with the architectural specification and schedule, and the corresponding 50% tender documentation prepared by the project consultant team, including structural, services, facade, BGA and accessibility documentation.
Do not scale drawings - refer to figured dimensions only. Any discrepancies shall immediately be referred to the architect for clarification.
All drawings may not be reproduced or distributed without prior permission from the architect.

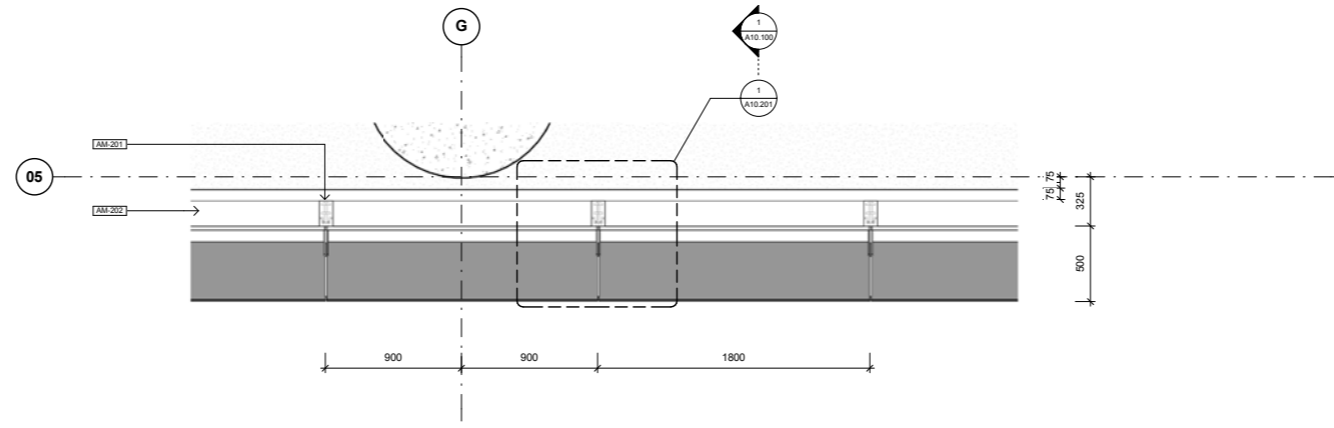
PROPOSED DESIGN



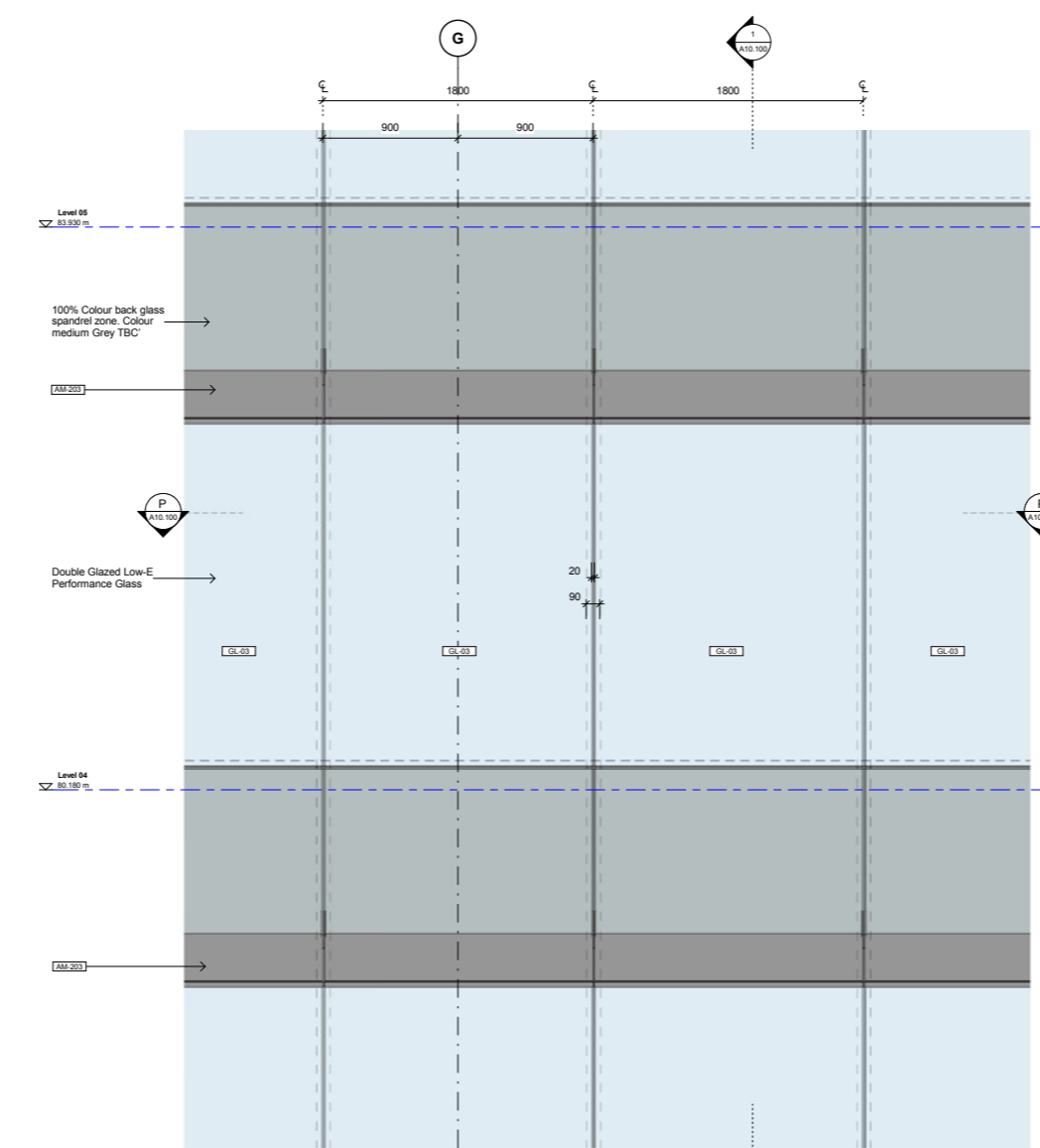
Type FT-01
Typical Office Facade: East & West

SE Facade Type - FT-01 SE
3D

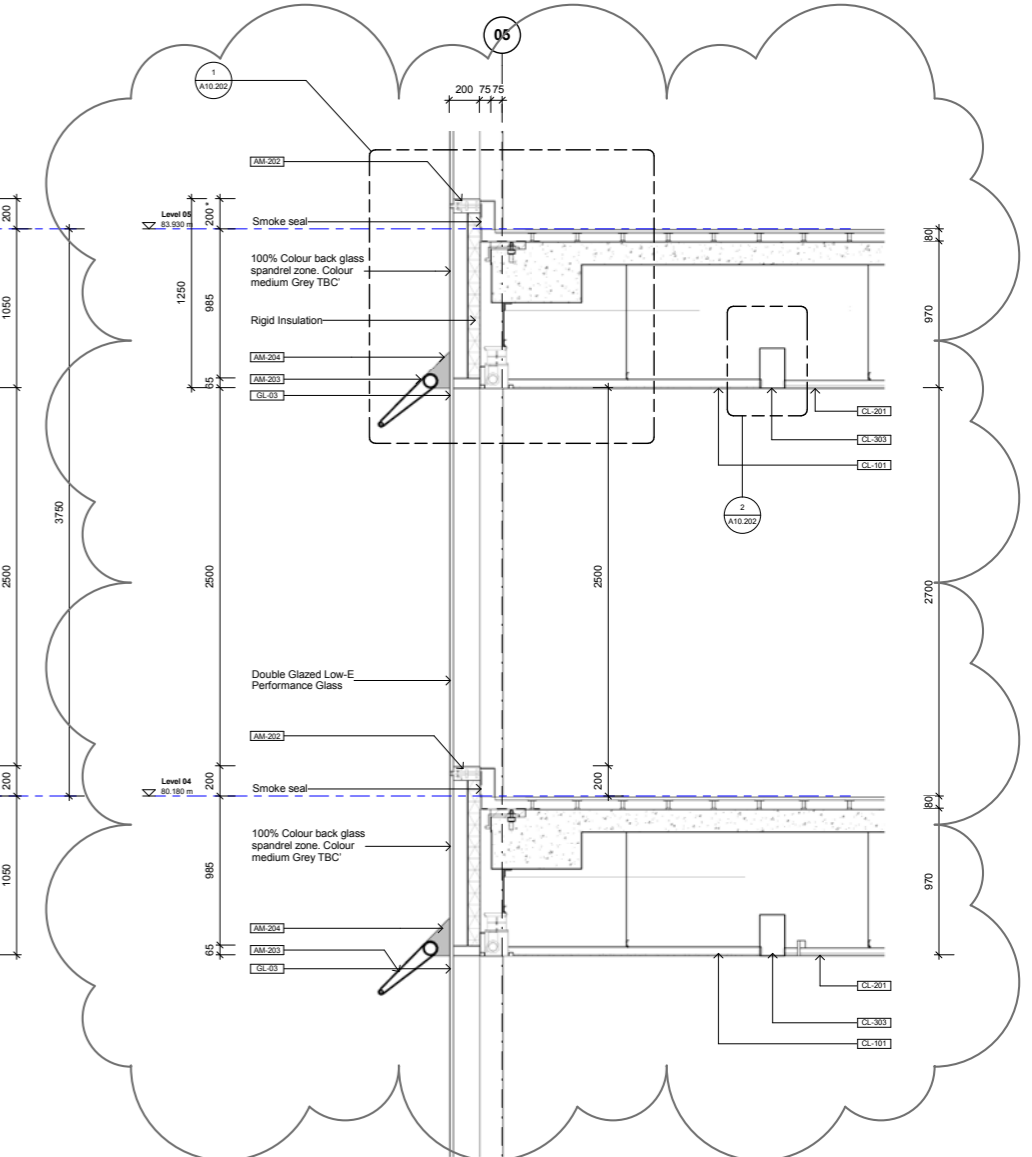
NW Facade Type - FT-01 NW
3D



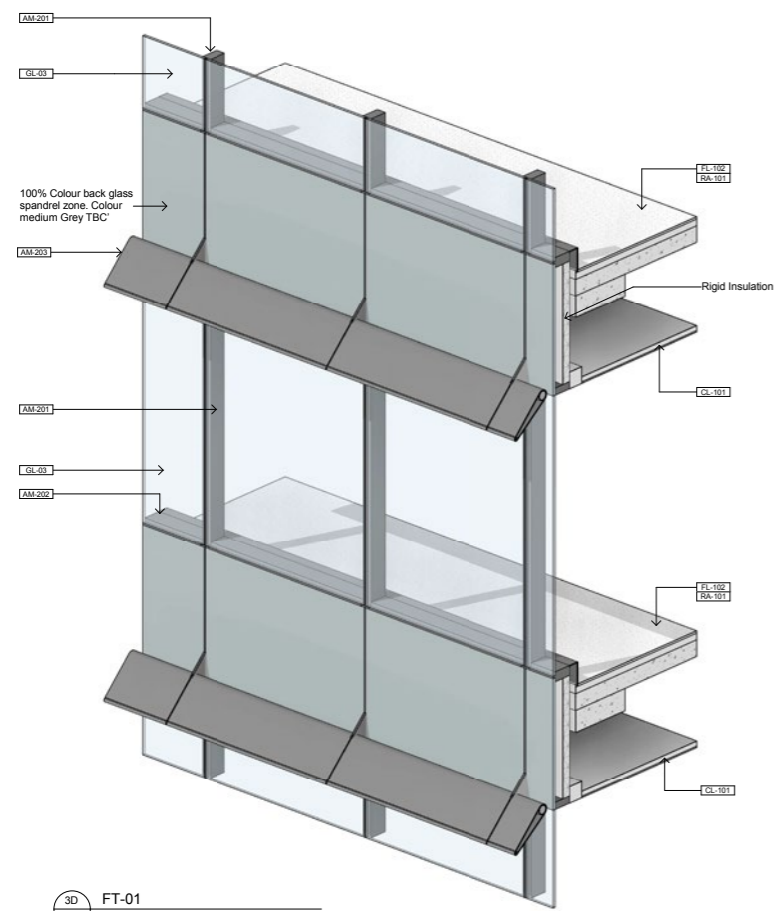
P FT-01 Plan
Plan 1:20



E FT-01 Elevation
Elevation 1:20



1 FT-01 Section
Section 1:20



3D FT-01
3D

70% TENDER (NOT FOR CONSTRUCTION)



- Notes - Facade:**
- 200mm Upstand to be amended to 300mm to achieve required facade performance. Refer to details A10.200 series.
 - All dimensions are indicative. Contractor and fabricators to verify all dimensions prior to construction.
 - Refer to A20.000 for Master Schedule code reference descriptions.
 - Refer to A10.200 series for Tower facade details.
 - Refer to A10.400 & A10.600 series for Podium facade types & details.
 - Refer to Structural, Mechanical, Electrical, Lighting, Hydraulic and Fire services documents.
 - Allow for all requirements as outlined in Acoustic, Accessibility, BCA, ESD (BASIX / Part J or similar) and Fire Engineering reports.

1 Denison Street
Sydney, New South Wales,
Australia

Tower Facade Type FT-01 - Typical
East & West Vision Glass

Scale	1:20	@ B1
Drawn	ASL	Checked BS
Project no.	S12055	
Status	70% TENDER	
Plot Date	30.06.17	
Plot File		

Melbourne 1 Nicholson Street
Melbourne VIC 3000 Australia
T 03 8664 6200 F 03 8664 6300
email mel@batesmart.com.au
http://www.batesmart.com.au

Sydney 43 Brisbane Street
Surry Hills NSW 2010 Australia
T 02 8354 5100 F 02 8354 5199
email syd@batesmart.com.au
http://www.batesmart.com.au

Bates Smart Pty Ltd ABN 70 004 999 400

Revision	Date	Description	Initial	Checked
3	30.06.17	70% Tender (Not for Construction)	ASL	BS
2	08.05.17	Amended for 50% Tender	ASL	BS
1	01.05.17	50% Tender (Not for Construction)	ASL	BS

These drawings represent completion of the architectural design to approximately 70% resolution, and therefore are neither complete nor error free. The drawings should be used in conjunction with the architectural specification and schedule, and the corresponding 70% tender documentation prepared by the project consultant team, including structural, services, facade, BCA and accessibility documentation.

Do not scale drawings - refer to figured dimensions only. Any discrepancies shall immediately be referred to the architect for clarification.

All drawings may not be reproduced or distributed without prior permission from the architect.

Drawing no. **A10.100**
Revision **3**



APPROVED DESIGN



PROPOSED DESIGN

