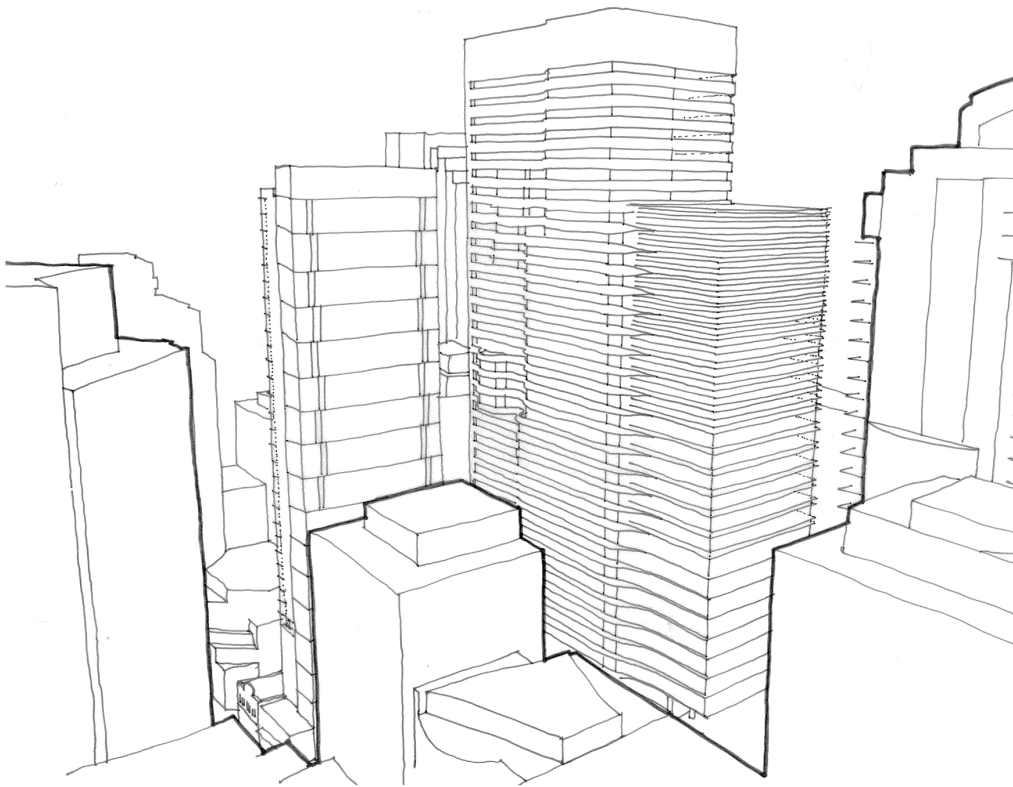




RICE DAUBNEY

# 88 Walker Street North Sydney

## Art Strategy Statement



Part 3A SUBMISSION

April 2009

## ART STRATEGY STATEMENT

The opportunity exists for this development to incorporate a number of artworks integrating into the architectural concept for the overall development and the public realm that surrounds it.

The integration of art into 88 Walker will be a very exciting and innovative initiative for North Sydney.

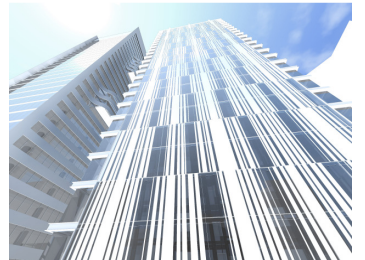
## DESIGN STATEMENT

The 88 Walker Street and 77-81 Berry Street development, known as 88 Walker, is conceived of as a major urban renewal project in the heart of North Sydney. It will be significant in the growth of the CBD environment in terms of people occupying the reinvigorated the ground plane of the CBD core and in the wider urban and skyline contexts.



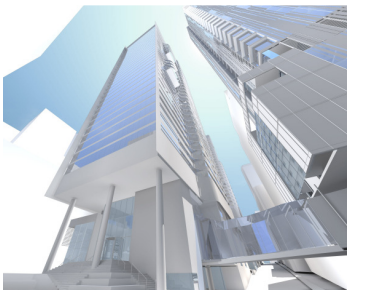
### Architectural Concept

The development of 88 Walker Street & 77-81 Berry Street is across two separate buildings with the building on 88 Walker acting as the formal address and entry foyer for both the hotel that sits above it and the office tower that sits behind on the laneway site.



The ground plane that surrounds and separates the buildings defines three of North Sydney's central laneways and as such offers a unique opportunity for a public domain of significant impact. The proposal to rework traffic movements in order to provide a new pedestrian environment on Denison Street offers a new gathering space in the heart of the CBD.

The two building forms reflect their function in their external expression. Conceptually the buildings are conceived at two primary scales firstly the macro scale of the skyline where they are both defined as strong simple forms in the heart of the CBD.



At the other end of the scale the buildings are perceived as additions to the fabric of the ground plane and public realm where the towers above are less important than the materiality and activation provided at ground plane and on the levels immediately above it. The interaction of bridges, awnings,

inverted podiums and new streets will enliven the heart of the CBD. Landscape plays a major role at this scale and helps to define the hierarchy of spaces and places that surround and enrich the development. It is intended to blur the line between public and private by integrating landscape across multiple levels and providing connections through and across the site that make no reference to boundary lines or ownerships. This strategy seeks to maximise the benefit of the buildings to both the public realm and the private spaces.

### **Opportunities for Art integration and embedding**

Integral to the concept for 88 Walker are a series of art opportunities that will harmonise with the architectural construct to provide a dynamic and activated public domain and a series of urban landmarks.

Conceptually the design of the various art pieces is guided by the following position statement intended to intertwine the artwork to a conceptual position behind the architecture.

Integrating both historic and contemporary readings of North Sydney and its people the placement of a series of interrelated pieces tell a series of North Sydney moments in time focusing on the evolution of North Sydney from a village to a major CBD and always working at the level of a community of people.

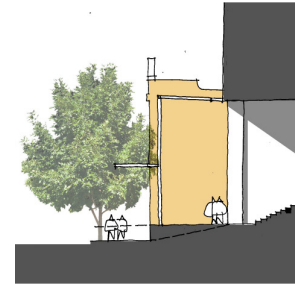
The opportunities for art can be broadly categorised into two conceptual ideas: the first being a series of larger installation pieces that will cross many media and are located in and on the built form, these are detailed below in **Dialogue**. The second are more informal “moments” throughout the public realm surrounding the buildings; these are explored further below in **Integration**.

#### **Dialogue**

A series of large scale works that build and layer stories of people, place and time into the design of these major urban buildings this signals a new growth spurt for the North Sydney CBD in-line with the Metro Strategy and as such a significant point in North Sydney’s historic timeline.

There are four proposed pieces within this component of the strategy and these are outlined below;

1. A free standing sculpture in a "glass case" adjacent to the Firehouse Hotel's north façade on Walker Street. This may well work as an abstract interpretive element relating the history of the Firehouse as an adapting series of uses over time and/or describe the urban development of Walker Street in general. This first installation views art as artifact, an object to be approached and related to from a distance.



2. The sandstone seat steps to the Spring Street - Little Spring Street junction which will be block sandstone cut from the actual excavation of the buildings basements. This seeks to explore the conceptual foundations or underpinnings of Sydney in Sandstone and its many historical layers. This is art as urban element that is interacted with either as a functional object (seat in this case) or related to at a more subtle layer.



3. A pair of integrated glass sculptures / readings on the bridges over Little Spring Street and Denison Street that respond to the collective concept of the people who inhabit North Sydney. These elements will create activity and a community of silent memories of people moving through the urban realm. This is an abstract artwork integrated into the design of the glass on the north of both bridges.



4. An artwork integrated into the northern core wall on the new cross street. This abstract element will take as its starting point a charting of the timeline of North Sydney's development from first settlement to today grounding the building at a specific moment in time while also acting as a historic reference point to the past.

### Integration

The other layer of art opportunities is more subtle and smaller in scale. This layer will exist within the "public realm" around the development and is conceived as a series of individual moments for quiet interaction between individual and art piece. This series of perhaps twelve small elements will encompass a broader reading of North Sydney as a place in time interpreting the various stories of the wider community.



These pieces might be literal or abstract and would be dotted around the "public domain" as seats, plaques, sculptures, integrated texts, paving details, etc. The purpose being to help inform a dialogue about the idea of what constitutes the "public realm or public domain" thus some of these pieces will be in Denison and Spring Streets while others might be in the new cross street, on the roof terrace or in the food court.

## **Art Briefing Process**

To ensure that the conceptual approach to sculpture within the building is maintained, and to develop an overall art strategy for the project, it is envisaged that an art advisory committee will be formed comprising representatives of the owner, architect, council and possibly major future tenants. In addition, the developer will seek the services of an external art advisor to help curate the overall collection and to work with the committee on developing ideas for the procurement and commissioning of particular pieces, exhibition and maintenance of the art works both permanent and temporary.



## **The next steps**

Post Part 3A approval and project implementation the art advisory committee will be formed and will meet to set out the future development of the above strategies and to begin the process of procuring the various artwork and sculptural pieces.