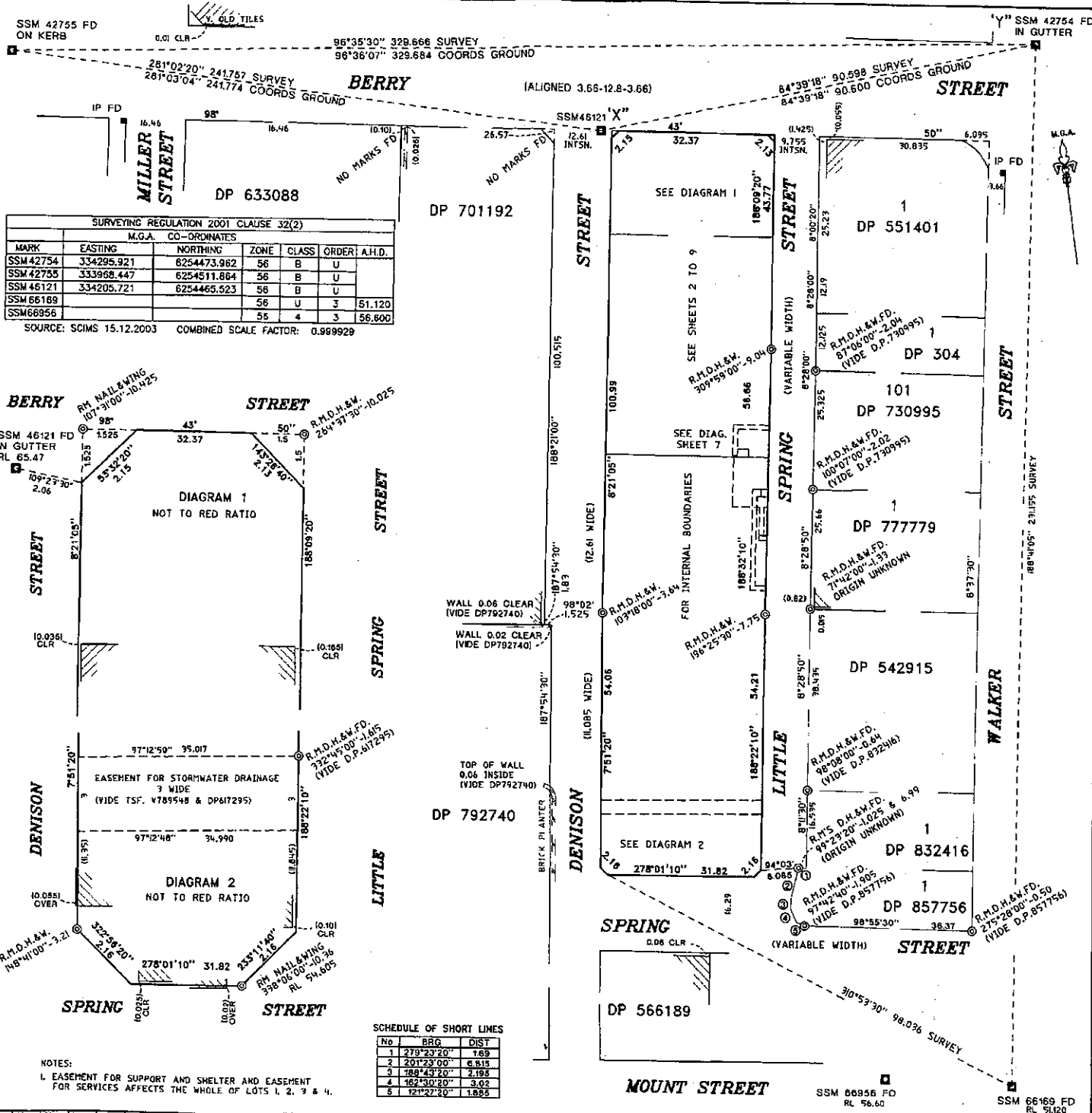




SIGNATURES, AND SEALS ONLY



SURVEYING REGULATION 2001 CLAUSE 32(2)

MARK	EASTING	NORTHING	ZONE	CLASS	ORDER	A.H.D.
SSM 42754	334295.921	6254473.962	56	B	U	
SSM 42755	333968.447	6254511.864	56	B	U	
SSM 46121	334205.721	6254465.523	56	B	U	
SSM 66189			56	U	3	51.120
SSM 66956			56	4	3	56.600

SOURCE: SCIMS 15.12.2003 COMBINED SCALE FACTOR: 0.999929

Department of Lands Approval

I, \_\_\_\_\_ in approving this plan certify (Authorized Officer) that all necessary approvals in regard to the allocation of the land shown hereon have been given.

Signature: \_\_\_\_\_

Date: \_\_\_\_\_

File Number: \_\_\_\_\_

Office: \_\_\_\_\_

Subdivision Certificate

I certify that the provisions of s.1094 of the Environmental Planning and Assessment Act 1979 have been satisfied in relation to the proposed \_\_\_\_\_ set out herein.

(Insert 'subdivision' or 'new road')

\* Authorized Person/General Manager/Accredited Certifier

Consent Authority \_\_\_\_\_

Date of endorsement \_\_\_\_\_

Accreditation no. \_\_\_\_\_

Subdivision Certificate no. \_\_\_\_\_

File no. \_\_\_\_\_

NOTES:

1. EASEMENT FOR SUPPORT AND SHELTER AND EASEMENT FOR SERVICES AFFECTS THE WHOLE OF LOTS 1, 2, 3 & 4.

SCHEDULE OF SHORT LINES

No	BRG	DIST
1	279°23'20"	1.69
2	201°23'00"	6.815
3	184°43'20"	2.195
4	162°30'20"	3.02
5	121°22'20"	1.825

10	120	30	40	50	60	70	80	90	100	110	120	130	140	150	160	170	180	190	200	210	220	230	240	250	260	270	280	290	300	310	320	330	340	350	360	370	380	390	400
----	-----	----	----	----	----	----	----	----	-----	-----	-----	-----	-----	-----	-----	-----	-----	-----	-----	-----	-----	-----	-----	-----	-----	-----	-----	-----	-----	-----	-----	-----	-----	-----	-----	-----	-----	-----	-----

Table of mm

**DP1078998**

Registered: 4.04.2005

Title System: TORRENS

Purpose: SUBDIVISION

Ref. Map: U1852-712, 714

Last Plan: DP 628425

PLAN OF SUBDIVISION OF LOT 1 DP 628425

Lengths are in metres. Reduction Ratio 1:800

L G A NORTH SYDNEY

Suburb/Locality: NORTH SYDNEY

Parish: WILLOUGHBY

County: CUMBERLAND

This is sheet # of my plan in # 10 sheets (Delete if inapplicable)

Surveying Regulation, 2001

I, ANDREW L. MASON of FRANK M. MASON & CO. PTY LTD PO BOX 56 WILSONS POINT 1565 a surveyor registered under the Surveying Act, 2002, hereby certify that the survey represented in this plan is accurate, has been made in accordance with the Surveying Regulation, 2001 and was completed on 14.12.2003.

The survey relates to \_\_\_\_\_

(Here specify the land actually surveyed, or specify any land shown in the plan that is not the subject of the survey)

Signature: \_\_\_\_\_ Date: \_\_\_\_\_

Surveyor registered under the Surveying Act, 2002

Datum Line: X-Y Type: Urban/Residential

Plans used in preparation of survey/compilation:

DP 154548 DP 566189 DP 730995  
 DP 340405 DP 617295 DP 777779  
 DP 503141 DP 628425 DP 792740  
 DP 542915 DP 633920 DP 832416  
 DP 511639 DP 701192 DP 857756  
 DP 551401 DP 702144

PANEL FOR USE ONLY for statements of intention to dedicate public roads or to create public reserves, drainage reserves, easements, restrictions on the use of land or positive covenants.

PURSUANT TO SECTION 88B OF THE CONVEYANCING ACT 1919 IT IS INTENDED TO CREATE:

- EASEMENT FOR SUPPORT & SHELTER
- EASEMENT FOR SERVICES LIMITED IN STRATUM "A"
- EASEMENT FOR SERVICES LIMITED IN STRATUM "B"
- EASEMENT FOR AIR PLENUM VARIABLE WIDTH LIMITED IN STRATUM "C"
- EASEMENT FOR EMERGENCY EGRESS "C"
- RIGHT OF FOOTWAY VARIABLE WIDTH LIMITED IN STRATUM "D"
- EASEMENT TO USE LIFT VARIABLE WIDTH LIMITED IN STRATUM "E"
- RIGHT OF CARRIAGEWAY VARIABLE WIDTH "F"
- EASEMENT FOR SERVICES VARIABLE WIDTH LIMITED IN STRATUM "G"
- EASEMENT FOR SERVICES VARIABLE WIDTH LIMITED IN STRATUM "H"
- EASEMENT FOR SERVICES VARIABLE WIDTH LIMITED IN STRATUM "J"
- EASEMENT FOR SERVICES VARIABLE WIDTH LIMITED IN STRATUM "K"
- EASEMENT FOR SERVICES VARIABLE WIDTH LIMITED IN STRATUM "L"

FOR CONTINUATION SEE SHEET 2

Box:76 / Reg:I675333 / Doc:DP 1078998 P / Rev:07-Apr-2005 / Sls:SC.OK / Prt:08-Apr-2005 11:36 / Pgs:ALL / Seq:2 of 10

OFFICE USE ONLY

BASEMENT 3 AND BELOW

NOTES:

- THIS PART LOT 4 IS LIMITED IN HEIGHT TO A HORIZONTAL PLANE AT RL 43.15 AND IS UNLIMITED IN DEPTH. THIS PART OF LOT 1 LIMITED IN DEPTH AND HEIGHT BETWEEN HORIZONTAL PLANES AT RL 43.15 & RL 58.27.
- THIS PART OF LOT 4 IS UNLIMITED IN DEPTH AND LIMITED IN HEIGHT TO A HORIZONTAL PLANE AT RL 43.15 AND IS ALSO LIMITED IN DEPTH AND HEIGHT BETWEEN HORIZONTAL PLANES AT RL 58.00 & RL 58.27. THIS PART OF LOT 1 IS LIMITED IN DEPTH AND HEIGHT BETWEEN HORIZONTAL PLANES AT RL 43.15 & RL 58.00.
- THIS PART OF LOT 4 IS UNLIMITED IN DEPTH AND LIMITED IN HEIGHT TO A HORIZONTAL PLANE AT RL 58.27.
- THIS PART OF LOT 4 IS UNLIMITED IN DEPTH AND LIMITED IN HEIGHT TO A HORIZONTAL PLANE AT RL 58.00. THIS PART OF LOT 3 IS LIMITED IN DEPTH TO A HORIZONTAL PLANE AT RL 58.00 AND IS UNLIMITED IN HEIGHT.
- THIS PART OF LOT 3 IS UNLIMITED IN DEPTH & HEIGHT.
- THIS PART OF LOT 4 IS UNLIMITED IN DEPTH AND LIMITED IN HEIGHT TO A HORIZONTAL PLANE AT RL 43.15. THIS PART OF LOT 1 IS LIMITED IN DEPTH TO A HORIZONTAL PLANE AT RL 43.15 AND IN HEIGHT TO A REGULAR INCLINED PLANE BETWEEN RL 57.46 & RL 58.27. THIS PART OF LOT 2 IS LIMITED IN DEPTH TO REGULAR INCLINED PLANES AT RL 57.46 & RL 58.27 AND IS LIMITED IN HEIGHT TO A HORIZONTAL PLANE AT RL 58.27.
- THIS PART OF LOT 4 IS UNLIMITED IN DEPTH AND LIMITED IN HEIGHT TO A HORIZONTAL PLANE AT RL 43.15. THIS PART OF LOT 1 IS LIMITED IN DEPTH AND HEIGHT BETWEEN HORIZONTAL PLANES AT RL 43.15 & RL 57.46. THIS PART OF LOT 2 IS LIMITED IN DEPTH AND HEIGHT BETWEEN HORIZONTAL PLANES AT RL 57.46 & RL 58.27.
- THIS PART OF LOT 4 IS UNLIMITED IN DEPTH AND LIMITED IN HEIGHT TO A HORIZONTAL PLANE AT RL 43.15. THIS PART OF LOT 1 IS LIMITED IN DEPTH TO A HORIZONTAL PLANE AT RL 43.15 AND LIMITED IN HEIGHT TO A REGULAR INCLINED PLANE BETWEEN RL 56.96 & RL 57.46. THIS PART OF LOT 2 IS LIMITED IN DEPTH TO A REGULAR INCLINED PLANE AT RL 56.96 & RL 57.46 AND IN HEIGHT TO A HORIZONTAL PLANE AT RL 58.27.
- THIS PART OF LOT 4 IS UNLIMITED IN DEPTH AND LIMITED IN HEIGHT TO A HORIZONTAL PLANE AT RL 58.35. THIS PART OF LOT 3 IS LIMITED IN DEPTH TO A HORIZONTAL PLANE AT RL 58.35 AND UNLIMITED IN HEIGHT.
- DENOTES EASEMENT FOR SERVICES LIMITED IN DEPTH AND HEIGHT BETWEEN HORIZONTAL PLANES AT RL 57.75 AND RL 58.35 (AFFECTING LOT 4)
- DENOTES EASEMENT FOR USE OF LIFT 2.935 WIDE LIMITED IN STRATUM "E" (AFFECTING LOT 3).
- DENOTES EASEMENT FOR AIR PLENUMM VARIABLE WIDTH LIMITED IN STRATUM "B" (AFFECTING LOT 1 ONLY)
- DENOTES EASEMENT FOR SERVICES VARIABLE WIDTH LIMITED IN STRATUM "A" (AFFECTING LOT 1 ONLY)
- DENOTES EASEMENT FOR SERVICES VARIABLE WIDTH LIMITED IN STRATUM "T" (AFFECTING LOT 4 AND LIMITED IN DEPTH AND HEIGHT BETWEEN HORIZONTAL PLANES AT RL 58.00 AND RL 58.35)

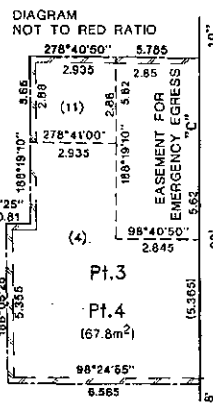
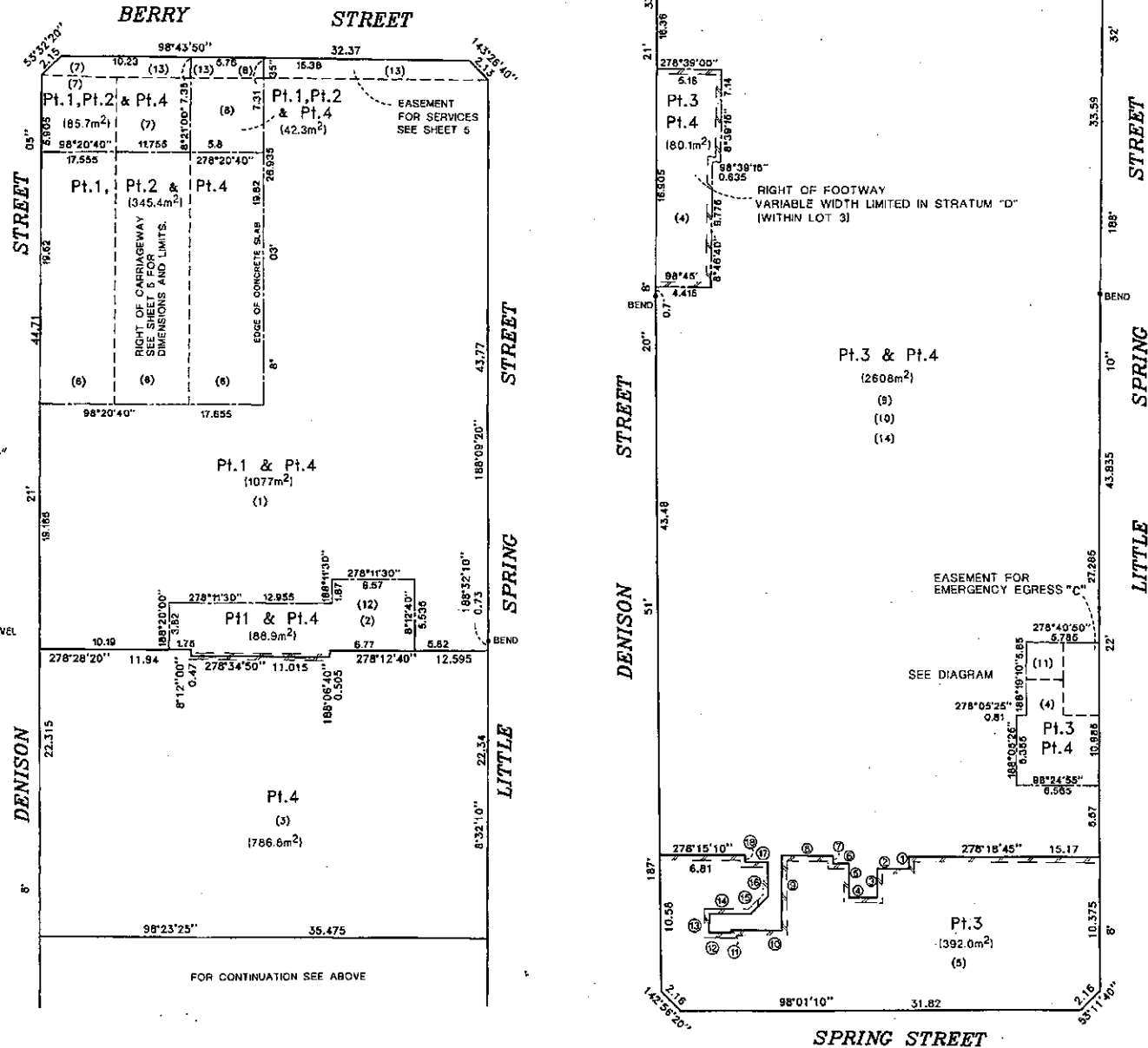
- DENOTES STRATUM BOUNDARY BETWEEN LOTS AT THIS LEVEL
- DENOTES BOUNDARY IS CENTRE OF ROAD
- DENOTES BOUNDARY IS FACE OF WALL

SCHEDULE OF SHORT LINES

No	BRG	DIST	No	BRG	DIST
1	188°18'45"	0.935	10	278°20'00"	4.07
2	278°18'45"	2.520	11	188°20'00"	0.2
3	187°45'55"	2.255	12	278°20'00"	1.72
4	278°35'45"	2.245	13	8°20'00"	1.44
5	9°05'10"	2.835	14	98°20'00"	1.395
6	277°44'10"	1.275	15	53°20'00"	1.855
7	8°15'10"	0.600	16	8°20'00"	2.68
8	278°15'10"	4.055	17	278°15'10"	1.825
9	188°06'20"	5.8	18	8°15'10"	0.495

TOTAL LOT AREAS

LOT 1	5989m <sup>2</sup>
LOT 2	1.015ha
LOT 3	7510m <sup>2</sup>
LOT 4	5197m <sup>2</sup>



LITTLE SPRING STREET

DP1078998

Registered 4.04.2005

This is sheet 3 of my plan in 10 sheets dated 12.01.2005

Audrow Haise

Surveyor registered under the Surveying Act 2002

This is sheet of the plan of sheets covered by my Certificate No. of

R. Stewart

Council Clerk

For use where space is insufficient in any panel on Plan Form 2

FOR CONTINUATION SEE SHEET 1

- RIGHT OF FOOTWAY 1.3 WIDE
- RIGHT OF ACCESS TO SERVICES LIMITED IN STRATUM "M"
- EASEMENT FOR ACCESS VARIABLE WIDTH LIMITED IN STRATUM "N"
- RIGHT OF ACCESS TO LIFTS VARIABLE WIDTH LIMITED IN STRATUM "U"
- EASEMENT FOR ACCESS TO SERVICES LIMITED IN STRATUM "O"
- EASEMENT TO USE LIFT VARIABLE WIDTH LIMITED IN STRATUM "P"
- RIGHT OF ACCESS TO LIFTS LIMITED IN STRATUM "V"
- RIGHT OF ACCESS TO LIFTS LIMITED IN STRATUM "W"
- EASEMENT FOR SERVICES VARIABLE WIDTH LIMITED IN STRATUM "Q"
- EASEMENT FOR PLANT ROOM SERVICES VARIABLE WIDTH LIMITED IN STRATUM "R"
- RIGHT OF ACCESS TO PLANT ROOM VARIABLE WIDTH "S"
- EASEMENT FOR SERVICES VARIABLE WIDTH LIMITED IN STRATUM "T"
- EASEMENT FOR VISITOR BICYCLE RAILS VARIABLE WIDTH "X"
- EASEMENT FOR ACCESS TO RESIDENTIAL GARBAGE STORAGE VARIABLE WIDTH "Y"

Reduction Ratio 1: 250

SURVEYORS REFERENCE: 31323-51

Box: 76 / Req: I675933 / Doc: DP 1078998 P / Rev: 07-Apr-2005 / Sts: SC, OK / Pts: 08-Apr-2005 11:36 / Pgs: ALL / Seq: 3 of 10

PLAN AMENDED BY SURVEYOR 23-02-08

Andrew Hesse

R. Edwards

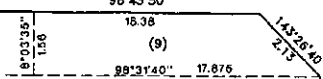
**BASEMENT 2**

- NOTES.
- THESE PARTS OF LOTS 1, 2 & 3 ARE LIMITED IN DEPTH AND HEIGHT BETWEEN HORIZONTAL PLANES AT RL 58.27 & RL 61.15.
  - THIS PART OF LOT 1 IS LIMITED IN DEPTH TO A HORIZONTAL PLANE AT RL 58.27 AND IS LIMITED IN HEIGHT TO REGULAR INCLINED PLANES BETWEEN RL 58.27 & RL 59.25. THIS PART OF LOT 2 IS LIMITED IN DEPTH TO REGULAR INCLINED PLANES AT RL 58.27 & RL 59.25 AND IN HEIGHT TO RL 61.15.
  - THIS PART OF LOT 1 IS LIMITED IN DEPTH AND HEIGHT BETWEEN HORIZONTAL PLANES AT RL 58.27 & RL 59.25. THIS PART OF LOT 2 IS LIMITED IN DEPTH AND HEIGHT BETWEEN HORIZONTAL PLANES AT RL 59.25 & RL 61.15.
  - THIS PART OF LOT 1 IS LIMITED IN DEPTH TO A HORIZONTAL PLANE AT RL 58.27 AND IN HEIGHT TO A REGULAR INCLINED PLANE BETWEEN RL 59.25 & RL 59.80. THIS PART OF LOT 2 IS LIMITED IN DEPTH TO A REGULAR INCLINED PLANE BETWEEN RL 59.25 & RL 59.80 AND IS LIMITED IN HEIGHT TO A HORIZONTAL PLANE AT RL 61.15.
  7. DENOTES THE RIGHT OF CARRIAGEWAY VARIABLE WIDTH "F" IS LIMITED IN DEPTH TO THE TRIANGULAR SHAPES AND REDUCED LEVELS SHOWN HEREON AND IN HEIGHT TO 2.1 METRES ABOVE THIS BASE.
  8. DENOTES THAT THE RIGHT OF CARRIAGEWAY VARIABLE WIDTH "F" IS LIMITED IN DEPTH TO THIS REDUCED LEVEL AND LIMITED IN HEIGHT TO 2.1 METRES ABOVE THIS BASE.
  9. DENOTES EASEMENT FOR SERVICES LIMITED IN STRATUM "A" (AFFECTING LOT 1)
  10. DENOTES EASEMENT FOR VISITOR BICYCLE RAILS VARIABLE WIDTH "X"

- DENOTES STRATUM BOUNDARY BETWEEN LOTS AT THIS LEVEL
- DENOTES BOUNDARY IS CENTRE OF WALL
- DENOTES BOUNDARY IS FACE OF WALL

**BERRY STREET**

DIAGRAM 2 NOT TO RED RATIO



**BERRY STREET**

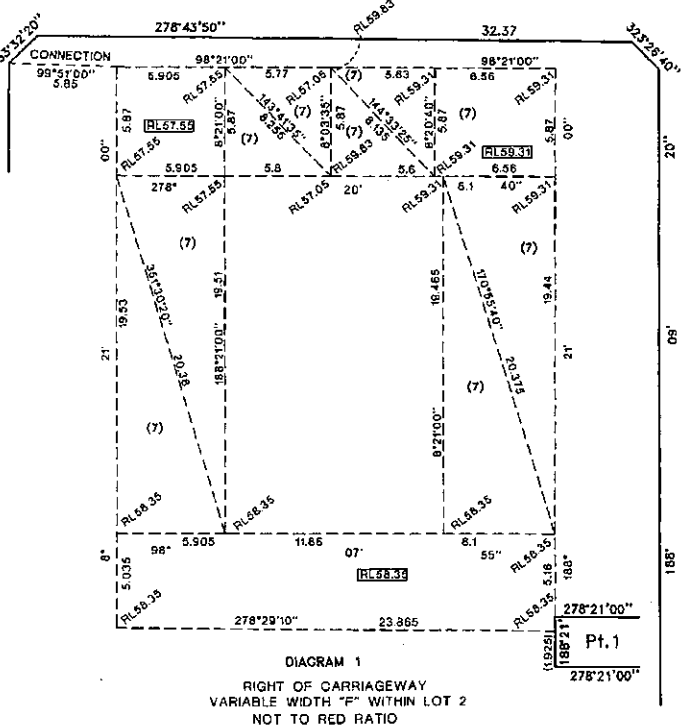
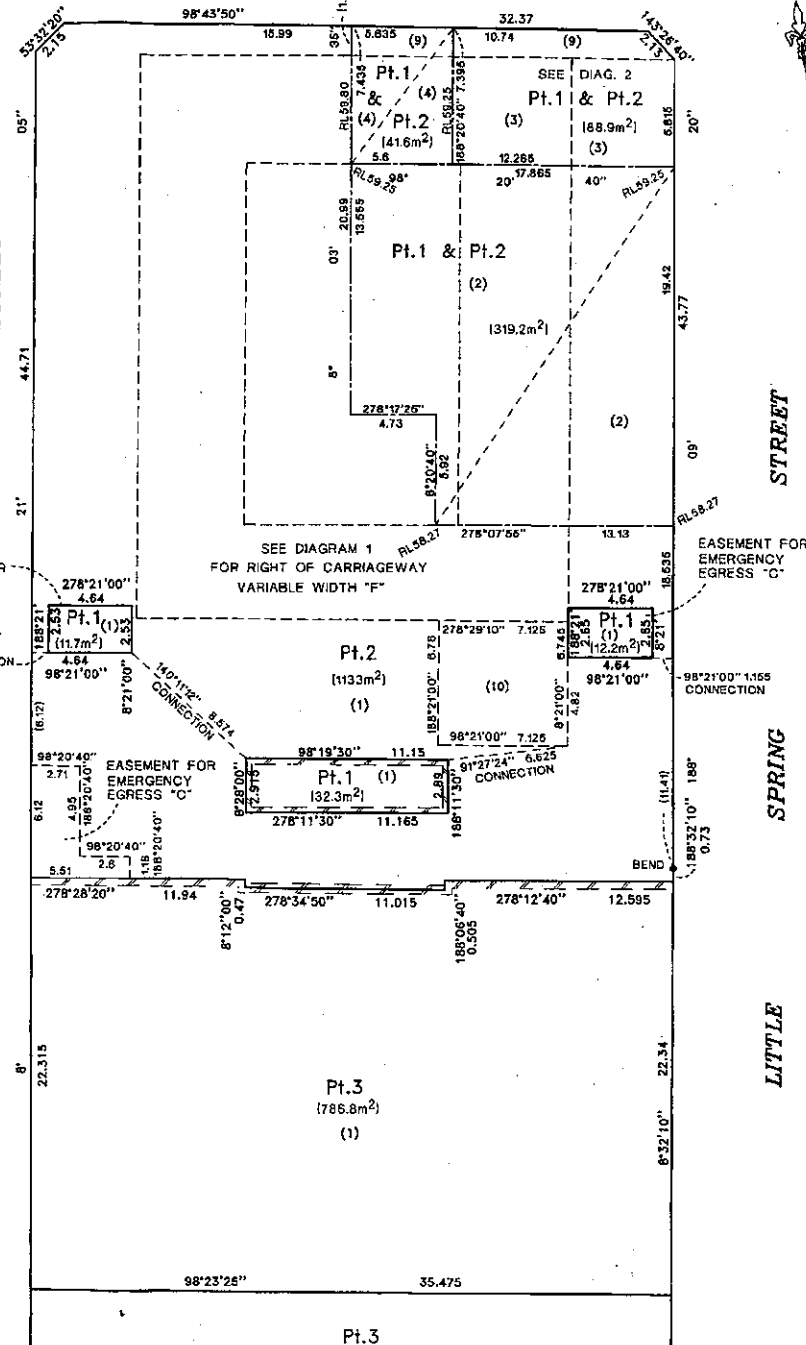


DIAGRAM 1 RIGHT OF CARRIAGEWAY VARIABLE WIDTH "F" WITHIN LOT 2 NOT TO RED RATIO

**BERRY STREET**



Pt. 3 SEE SHEET 2

Box:76 / Req:I675333 / Doc:DP 1078998 P / Rev:07-Apr-2005 / Sts:SC.OK / Pmt:08-Apr-2005 11:36 / Pgs:ALL / Seq:4 of 10



LEVEL 1

NOTES:

1. THIS PART OF LOT 2 IS LIMITED IN DEPTH AND HEIGHT BETWEEN HORIZONTAL PLANES AT RL 64.50 & RL 65.10. THIS PART OF LOT 3 IS LIMITED IN DEPTH AND HEIGHT BETWEEN HORIZONTAL PLANES AT RL 65.10 & RL 66.00.
2. THESE PARTS OF LOTS 1, 2 & 3 ARE LIMITED IN DEPTH & HEIGHT BETWEEN HORIZONTAL PLANES AT RL 64.50 & RL 66.00.
3. THESE PARTS OF LOTS 1 & 3 ARE LIMITED IN DEPTH & HEIGHT BETWEEN HORIZONTAL PLANES AT RL 64.00 & RL 68.00.
4. THIS PART OF LOT 3 IS LIMITED IN DEPTH AND HEIGHT BETWEEN HORIZONTAL PLANES AT RL 62.70 & RL 68.00.
5. DENOTES RIGHT OF ACCESS TO LIFTS VARIABLE WIDTH LIMITED IN STRATUM "P".
6. DENOTES EASEMENT TO USE LIFT VARIABLE WIDTH LIMITED IN STRATUM "P".
7. DENOTES RIGHT OF ACCESS TO LIFTS LIMITED IN STRATUM "V".
8. DENOTES RIGHT OF ACCESS TO LIFTS LIMITED IN STRATUM "W".

9. DENOTES RIGHT OF CARRIAGEWAY VARIABLE WIDTH "F" IS LIMITED IN DEPTH TO THE TRIANGULAR SHAPES AND REDUCED LEVELS SHOWN HEREON AND IN HEIGHT TO 2.1 METRES ABOVE THIS BASE.

10. (RL600) DENOTES THAT THE RIGHT OF CARRIAGEWAY VARIABLE WIDTH "F" IS LIMITED IN DEPTH TO THIS REDUCED LEVEL AND LIMITED IN HEIGHT TO 2.1 METRES ABOVE THIS BASE.

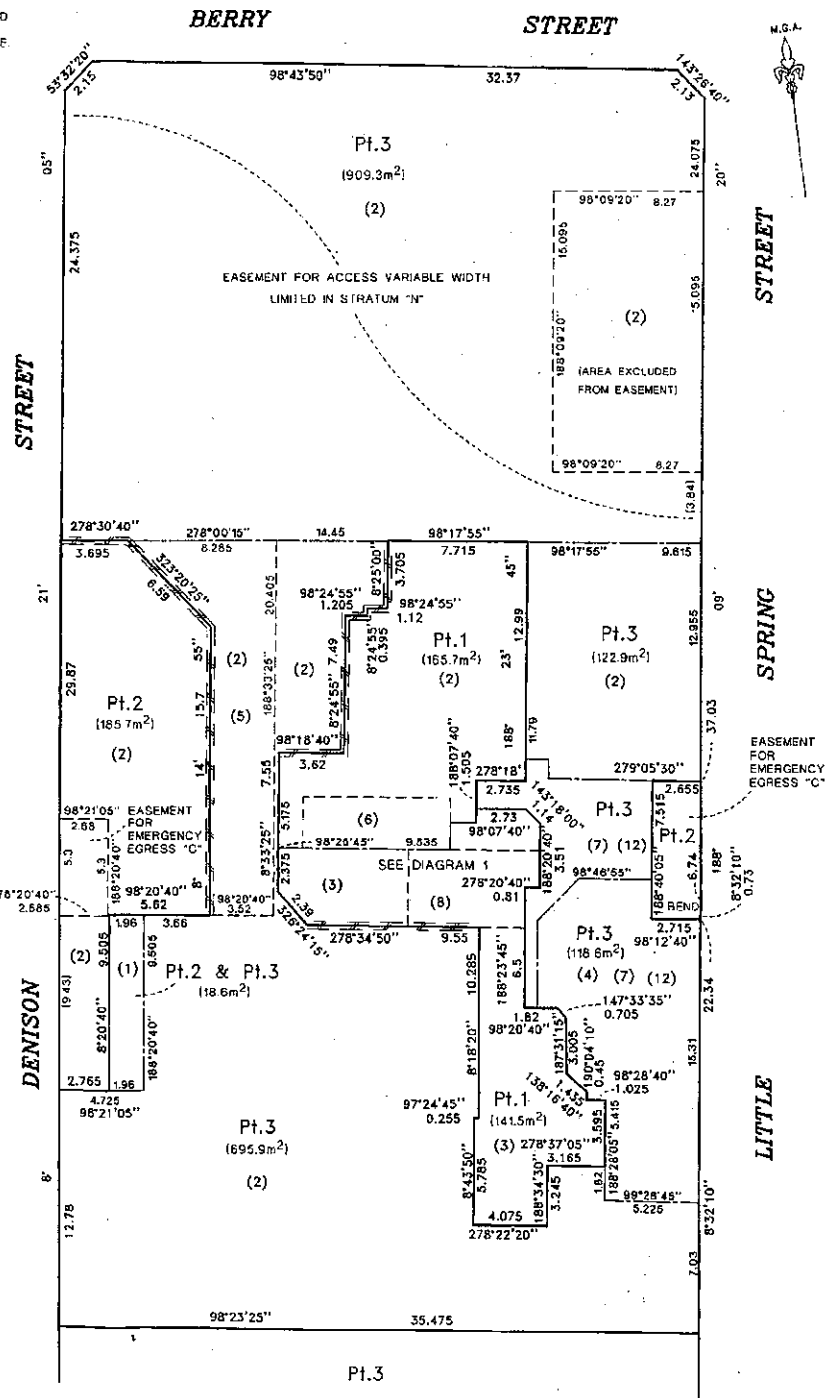
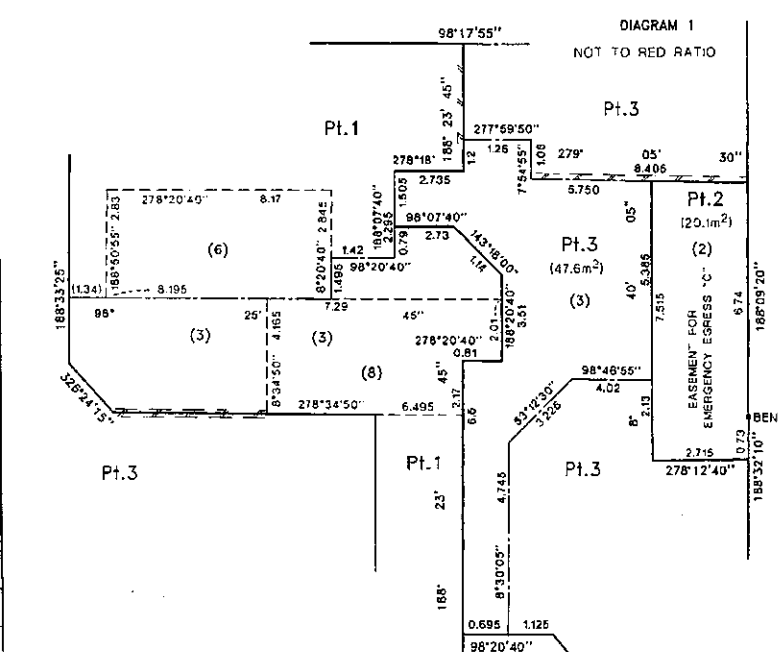
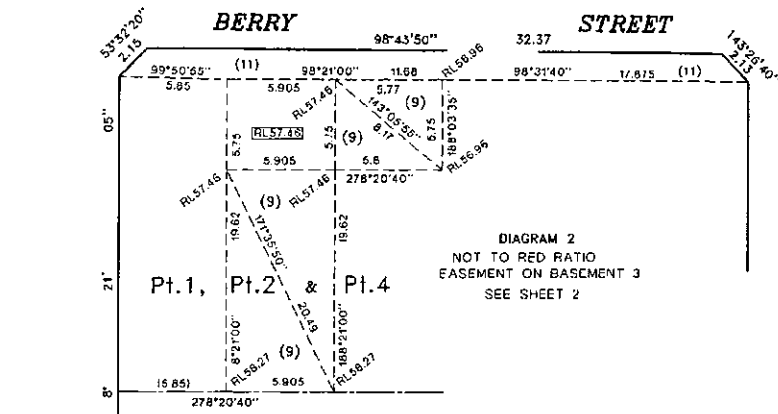
11. DENOTES EASEMENT FOR SERVICES VARIABLE WIDTH LIMITED IN STRATUM "A" (AFFECTING LOT 1 ONLY)

12. DENOTES EASEMENT FOR ACCESS TO RESIDENTIAL GARBAGE STORAGE VARIABLE WIDTH "Y".

- DENOTES STRATUM BOUNDARY BETWEEN LOTS AT THIS LEVEL
- == DENOTES BOUNDARY IS CENTRE OF WALL
- ≡≡ DENOTES BOUNDARY IS FACE OF WALL

DIAGRAM 2  
NOT TO RED RATIO  
EASEMENT ON BASEMENT 3  
SEE SHEET 2

DIAGRAM 1  
NOT TO RED RATIO



DP1078998

Registered A. D.L. 2005

This is sheet 6 of my plan in 10 sheets dated 12.01.2005

Andrew Hesse

Surveyor registered under the Surveying Act 2002

This is sheet of the plan of sheets covered by my Certificate No. of

Andrew Hesse

Council Clerk

For use where space is insufficient in any panel on Plan Form 2

Box: 76 / Req: I675333 / Doc: DP 1078998 P / Rev: 07-Apr-2005 / Sts: SC, OK / Prit: 08-Apr-2005 11:36 / Pgs: ALL / Seq: 6 of 10

DP1078998

LEVEL 2

NOTES:  
1. THESE PARTS OF LOTS 1, 2 & 3 ARE LIMITED IN DEPTH AND HEIGHT BETWEEN HORIZONTAL PLANES AT RL 68.00 & RL 71.90

M.G.A.

Registered 11.04.2005

This is sheet 7 of my plan in 10 sheets dated 12.01.2005

*Audun Hansen*

Surveyor registered under the Surveying Act 2002

This is sheet of the plan of sheets covered by my Certificate No. of

*R. J. ...*

Council Clerk

For use where space is insufficient in any panel on Plan Form 2

Box:76 / Reg:1675333 / Dec:DP 1078998 P / Rev:07-Apr-2005 / Sts:SC,OK / Prt:08-Apr-2005 11:36 / Pgs:ALL / Seq:7 of 10

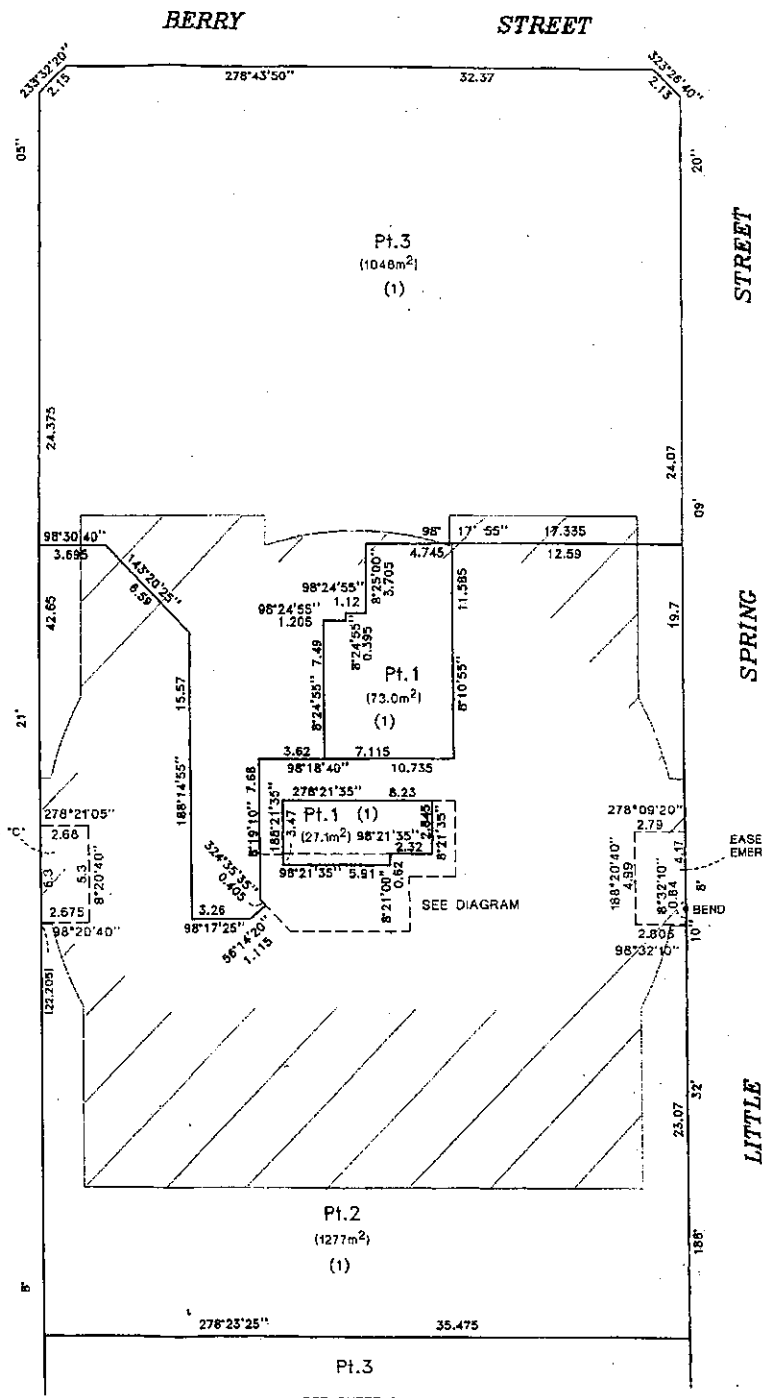
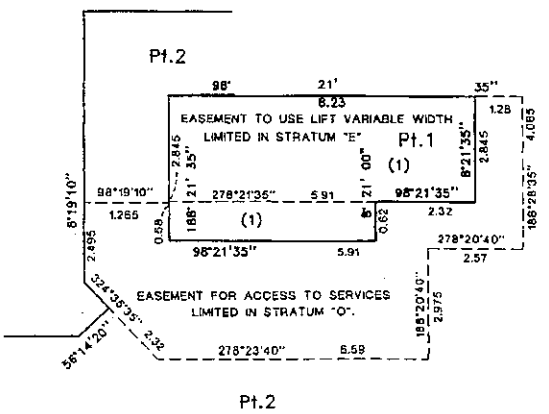


DIAGRAM  
NOT TO RED RATIO



SEE SHEET 2

Reduction Ratio 1: 200

DP1078998

Registered 4.04.2005

This is sheet 8 of my plan in 10 sheets dated 12.01.2005

*Audwheas*

Surveyor registered under the Surveying Act 2002

This is sheet of the plan of sheets covered by my Certificate No. of

*R. Edwards*

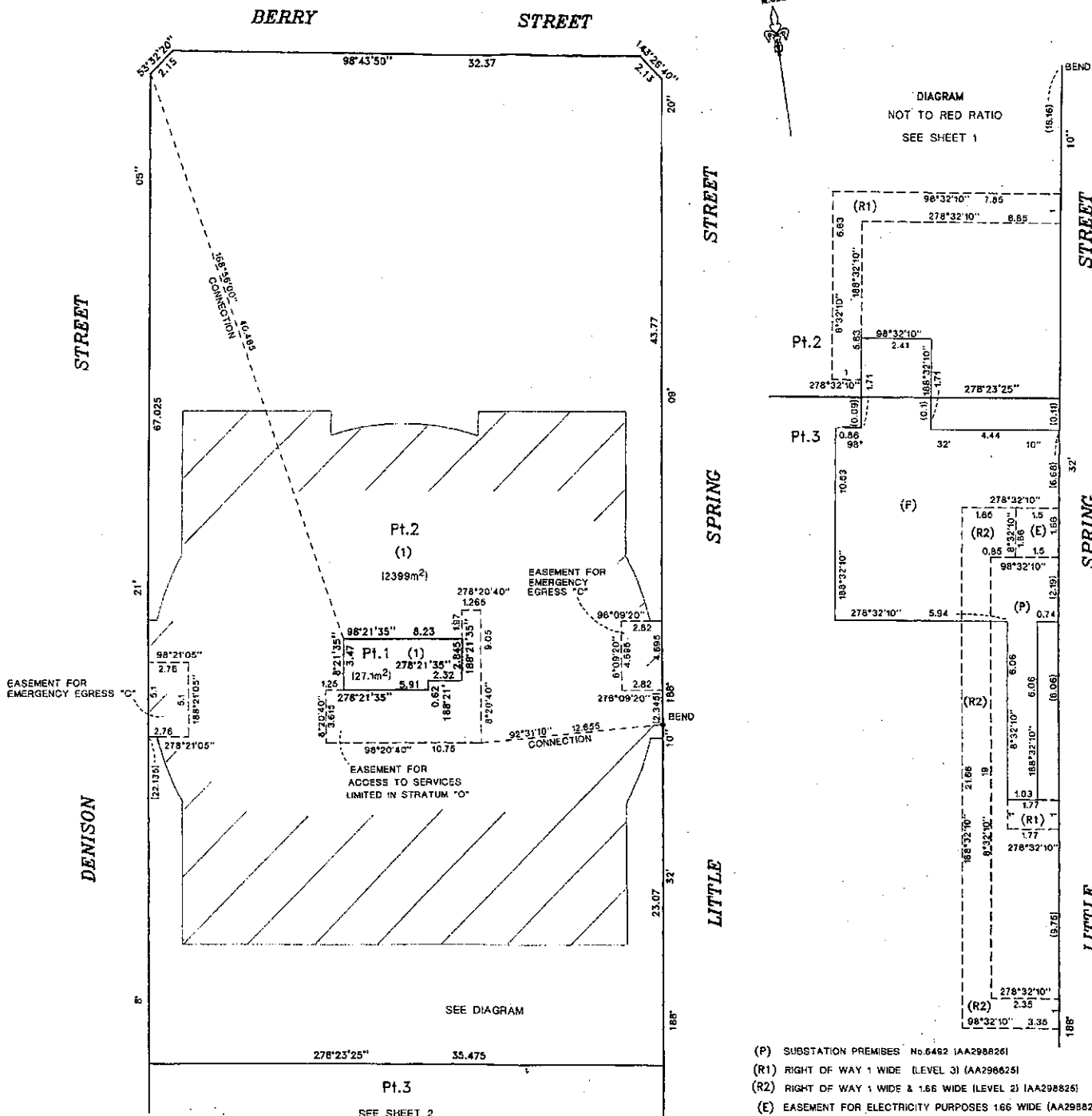
Council Clerk

For use where space is insufficient in any panel on Plan Form 2

Box: 76 / Reg: L675333 / Doc: DP 1078998 p / Rev: 07-Apr-2005 / Srs: SC OK / Pts: 08-Apr-2005 11:36 / Pgs: ALL / Seg: 8 of 10

LEVEL 3-6

1. THESE PARTS OF LOTS 1 & 2 ARE LIMITED IN DEPTH & HEIGHT BETWEEN HORIZONTAL PLANES AT RL 71.90 & RL 85.6



- (P) SUBSTATION PREMISES No. 6482 IAA2988261
- (R1) RIGHT OF WAY 1 WIDE (LEVEL 3) IAA2986251
- (R2) RIGHT OF WAY 1 WIDE & 1.66 WIDE (LEVEL 2) IAA2988261
- (E) EASEMENT FOR ELECTRICITY PURPOSES 1.66 WIDE (AA2988261) (LEVEL 2 & WITHIN FLOOR STRUCTURE BETWEEN LEVELS 2 & 3)

DP1078998

Registered 4.04.2005

This is sheet 9 of my plan in 10 sheets dated 12.01.2005

*Andrews*

Surveyor registered under the Surveying Act 2002

This is sheet of the plan of sheets covered by my Certificate No. of

*Redwards*

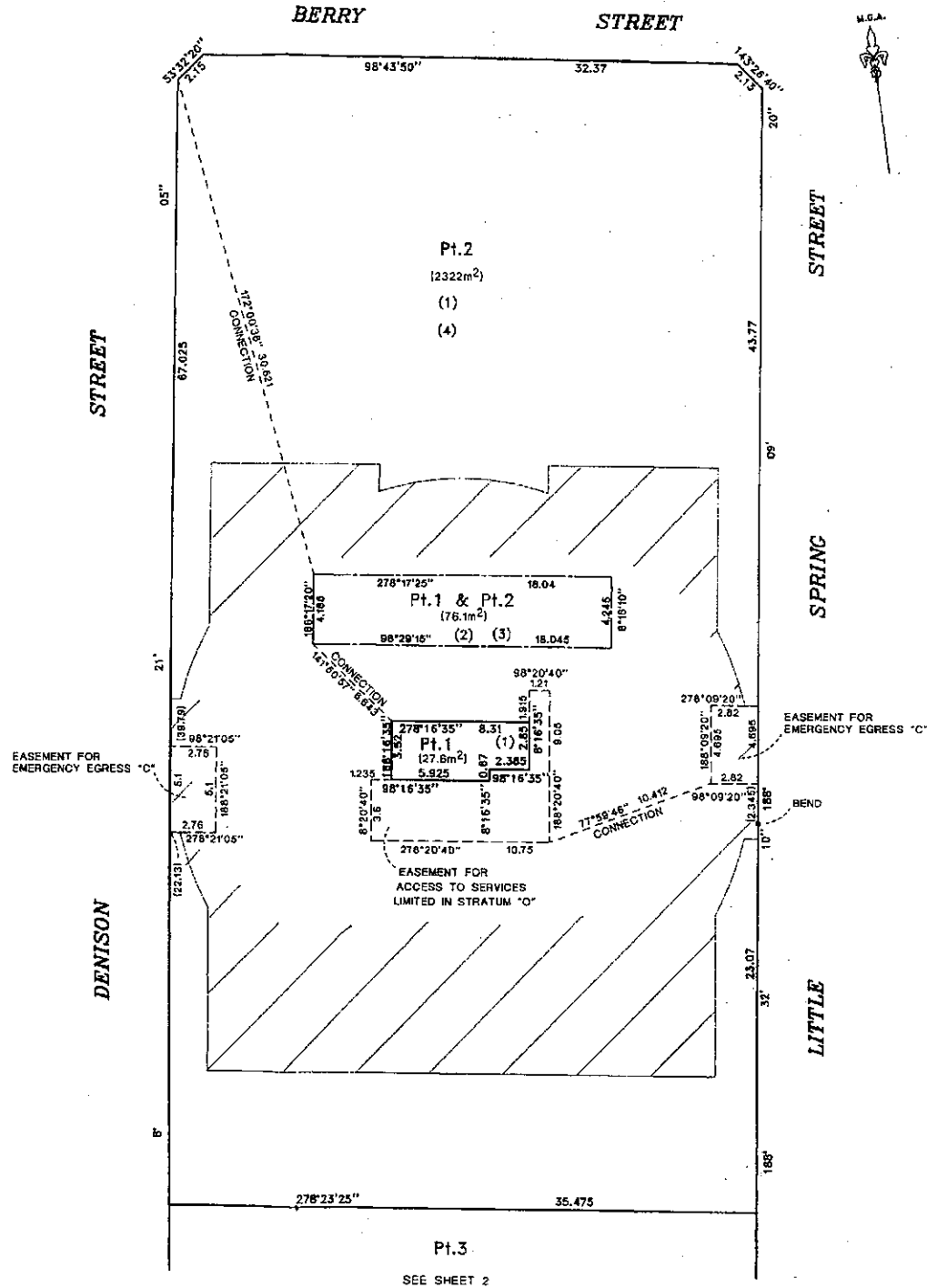
Council Clerk

For use where space is insufficient in any panel on Plan Form 2

LEVEL 7

1. THESE PARTS OF LOTS 1 & 2 ARE LIMITED IN DEPTH AND HEIGHT BETWEEN HORIZONTAL PLANES AT RL 85.60 & RL 89.80
2. THIS PART OF LOT 1 IS LIMITED IN DEPTH AND HEIGHT BETWEEN HORIZONTAL PLANES AT RL 88.20 AND RL 89.80. THIS PART OF LOT 2 IS LIMITED IN DEPTH AND HEIGHT BETWEEN HORIZONTAL PLANES AT RL 85.60 AND RL 88.20.
3. DENOTES EASEMENT FOR SERVICES VARIABLE WIDTH LIMITED IN STRATUM "O" LIMITED IN DEPTH AND HEIGHT BETWEEN HORIZONTAL PLANES AT RL 88.20 AND RL 89.80 WITHIN LOT 2).
4. DENOTES EASEMENT FOR ACCESS TO SERVICES LIMITED IN STRATUM "O" LIMITED IN DEPTH AND HEIGHT BETWEEN HORIZONTAL PLANES AT RL 88.20 AND RL 89.80).

--- DENOTES STRATUM BOUNDARY BETWEEN LOTS AT THIS LEVEL



SEE SHEET 2

Reduction Ratio 1: 200

Box: 76 / Reg: L675333 / Doc: DP 1078998 P / Rev: 07-Apr-2005 / Sls: SC OK / Prt: 08-Apr-2005 11:36 / Pgs: ALL / Seq: 9 of 10

Box:76 / Req:1675333 / Doc:DP 1078998 P / Rev:07-Apr-2005 / Sts:SC.OK / Pts:ALL / Seq:10 of 10

LEVEL 8 AND ABOVE

- NOTES:
1. THIS PART OF LOT 1 IS LIMITED IN DEPTH TO A HORIZONTAL PLANE AT RL 89.8 AND IS UNLIMITED IN HEIGHT.
  2. THIS PART OF LOT 2 IS LIMITED IN DEPTH AND HEIGHT BETWEEN HORIZONTAL PLANES AT RL 89.80 & RL 94.40. THIS PART OF LOT 1 IS LIMITED IN DEPTH TO A HORIZONTAL PLANE AT RL 94.40 AND IS UNLIMITED IN HEIGHT.
  3. DENOTES RIGHT TO USE LIFT VARIABLE WIDTH LIMITED IN STRATUM "P"
  4. DENOTES RIGHT OF ACCESS TO PLANT ROOM VARIABLE WIDTH "S".
  5. DENOTES EASEMENT FOR PLANT ROOM SERVICES VARIABLE WIDTH LIMITED IN STRATUM "R" (AFFECTING LOT 2 STRATUM ONLY).

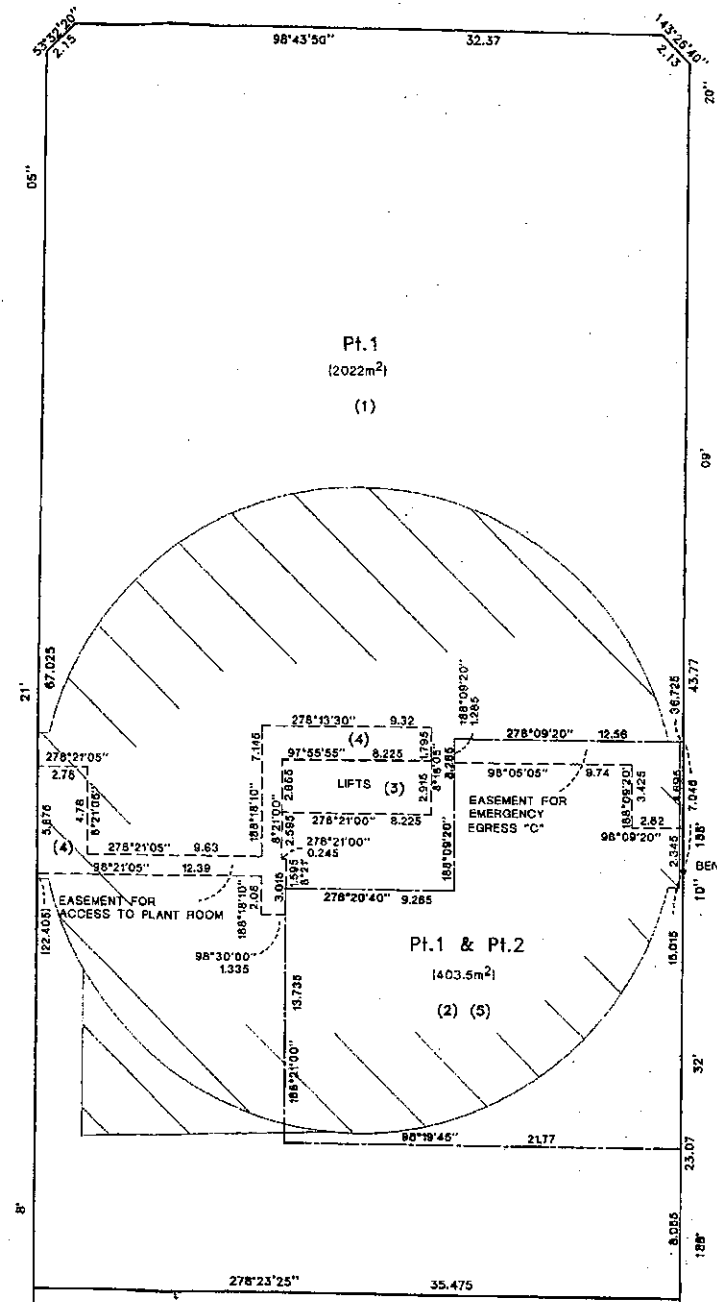
--- DENOTES STRATUM BOUNDARY BETWEEN LOTS AT THIS LEVEL

DENISON STREET

BERRY STREET

SPRING STREET

LITTLE STREET



Pt. 3  
SEE SHEET 2

DP1078998

Registered 4.04.2005

This is sheet 10 of my plan in 10 sheets dated 12.01.2005

Andrews

Surveyor registered under the Surveying Act 2002

This is sheet of the plan of sheets covered by my Certificate No. of

R. Stewart

Council Clerk

For use where space is insufficient in any panel on Plan Form 2

Reduction Ratio 1: 200

SURVEYORS REFERENCE: 31323-51