

PROJECT:
Hornsby Ku-ring-gai Hospital Mental Health Redevelopment.

PRECINCT BASED VIEW ANALYSIS
Prepared for the proposed Hornsby Ku-ring-gai Hospital Mental Health Redevelopment.

Of key importance to the consideration of appropriate planning and design principles for the site, the Study identifies the important views are the local views available from the public domain spaces around the Hornsby Mental Health Site, including from the public domain areas within Palmerston Road, Lowe Road and to James Park.

The view analysis on the proposed design clearly shows an increase in public view opportunity, the design:

- Seeks to maintain and enhance the view corridors from the west to east, to the heritage item on site.
- By comparison to the existing maternity building, the alignment of the southern edge of proposed Hornsby MHU, increases the view across to the east, towards the Hydro Pool (heritage item) and the MHICU building.
- Places high importance on axial views along the Palmerston Road into the site and across the heritage item and the MHICU.
- Considers and maintains the internal view corridor north-south, through the site from the George Lumby building to the James Park.
- Placement of the eastern edge of the proposed Hornsby MHU building, reinforces the north-south view axis, from the internal site north to James Park.

The diagram, fig.1 Views shows the view analysis opportunities on site.

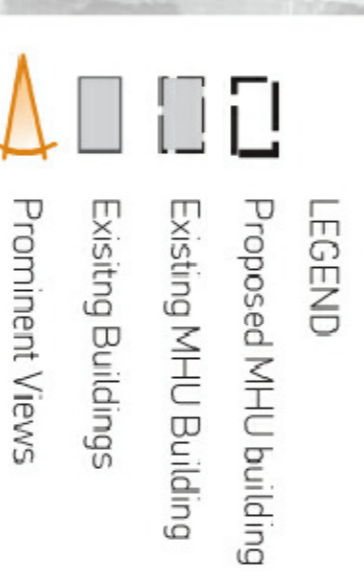
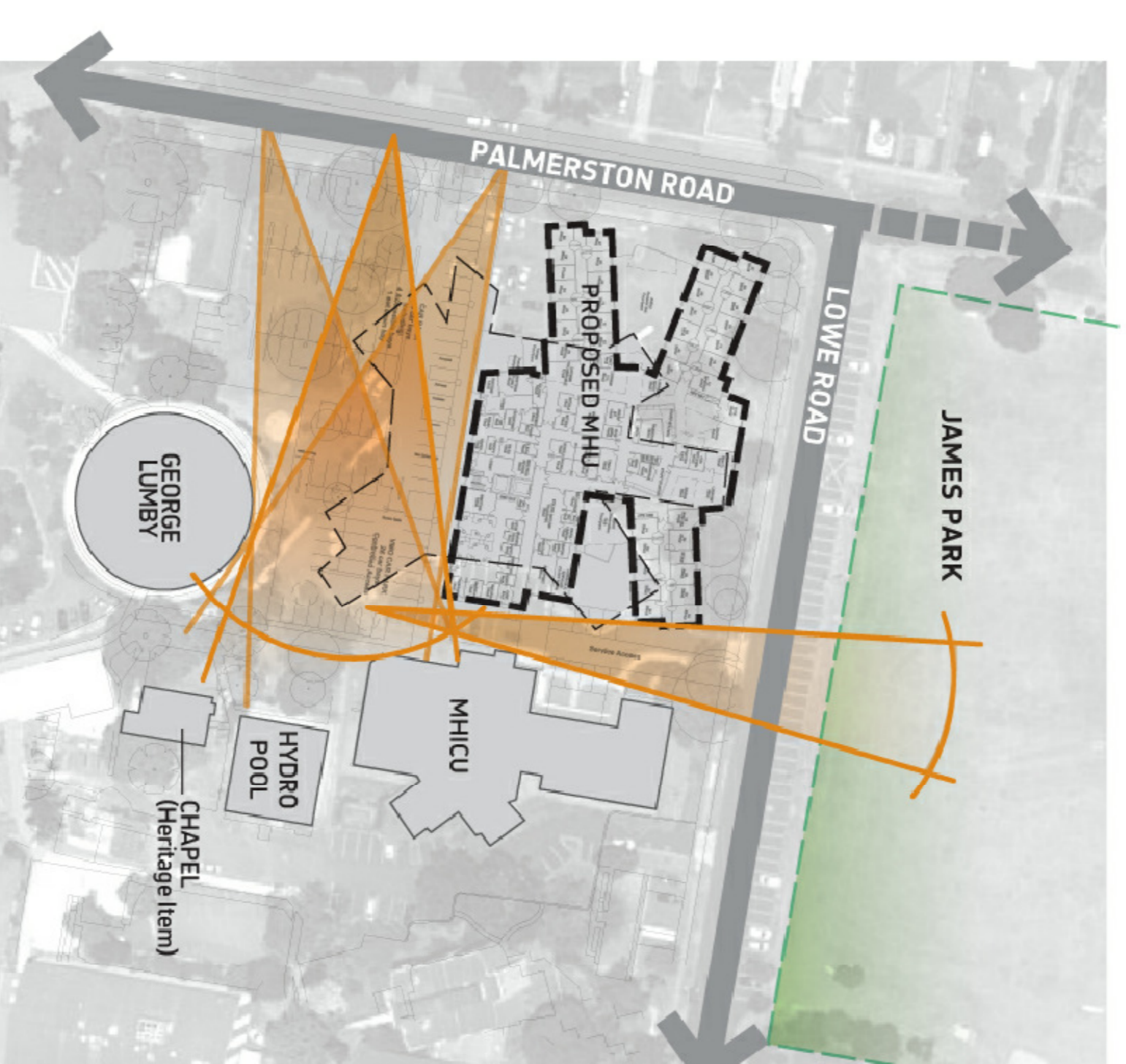


fig.1 Views

