

28 July 2015

Ms Fiona Gibson
Regional and Key Site Assessments
Department of Planning and Environment
GPO Box 39
Sydney NSW 2001

Dear Ms Gibson,

RE: MP 08_0222 MOD 6 - Global Switch, City of Sydney Comments

Thank you for your email of 8 July 2015 containing the City of Sydney's (the City) comments regarding the abovementioned application. Please see our comments below in relation to the issues raised by the City.

Façade Concept

Global Switch recently completed the first stage of its \$250 million Sydney East expansion. Integral to this project has been the upgrading of its main entry and access to the campus on Harris Street in response to a change in the business operations. This upgrade has allowed for an enhanced entry into both the existing Sydney West and new Sydney East, and provides a seamless operation for visitors. In undertaking these works, it was determined that the original entry on Pyrmont Street was no longer required to operate as an entry point and reception area. Rather than confuse visitors to the premises, the second point of entry on Pyrmont Street is therefore proposed to be deleted and the internal floor space converted into usable technical area.

Global Switch has made a significant investment in the façade treatment for Sydney East that provides both an aesthetic outcome and establishes the Global Switch corporate identity in the streetscape and wider locality. To further highlight the façade and provide additional 'activation' along the street frontage, Global Switch has engaged a professional facade lighting consultant to further develop a concept to fulfil this task and ensure that the high quality of materials and finishes is maintained.

The attached preliminary concept provides a solution that is designed to create interest and activation to Pyrmont Street, while meeting Global Switch's business and operational requirements. This concept will complement the works being carried out within the Darling Harbour Live precinct.

The Darling Harbour redevelopment effectively "turns its back" on Pyrmont Street, with limited direct ground level interface with the existing street network. It is noted that this is mainly due to the physical barrier imposed by the light rail corridor which delineates the western edge of the Precinct.

However it is noted that as part of that redevelopment, the extension of Quarry Street and enhancement of the Fig Street footbridge will provide new and improved permeability between the City and Ultimo-Pyrmont, thereby providing east-west connections in the locality.

Primary north-south pedestrian movements are expected to occur either through the Darling Harbour Precinct itself or along Harris Street. It is considered likely Pyrmont Street will continue to fulfil a secondary role in terms of north-south pedestrian movement through the precinct.

Global Switch is currently out to tender for the construction of Stage 2 and 3 of the building and will work with its consultants and the successful contractor to arrive at a fully-developed solution based on the attached proposal that will provide interest and activity to the streetscape.

Extent of Active Wall

The extent of the proposed active wall treatment is as illustrated in the attached concept prepared by Global Switch's professional facade lighting consultant. This approach has been adopted to address the Department of Planning's initial concerns relating to potential light disturbance to residents directly opposite the site on Quarry Street. Global Switch also feels that maintaining elements of the sandstone façade treatment already approved as part of the original design creates better cohesion between the various stages of the building and in the wider the urban context in terms of both an architecture and aesthetics.

It should also be noted that Global Switch logo will be retained on the Pyrmont Street frontage (on the upper levels of the building) to provide building identification and assist with wayfinding.

Transparent Frontage

Global Switch owns, manages and operates data centres around the globe and all of its facilities operate at the highest levels of security in order to maintain the optimum environments for the IT equipment housed within the buildings. It should be noted that the "Meet Me Room" on Pyrmont Street (referred to in the City's comments) is not a conventional meeting room, but rather it is a technical space containing sensitive communications infrastructure. Accordingly, it is not possible to have a glazed and fully transparent frontage to this space for operational and security reasons.

Similarly, the remainder of the building's ground level comprises technical areas that will contain highly sensitive infrastructure which for security reasons cannot be visible to the external of the building, nor can it be exposed to environmental conditions such as sunlight.

Surveillance

The City has also raised concerns about the blade columns at ground level, due to lack of surveillance of the area. Global Switch considers that it is important to maintain the integrity of the approved Pyrmont Street façade, which includes the rhythm created by the blade walls. As stated above, by necessity Global Switch operates in a highly secure environment. Accordingly all parts of the building, including its perimeter, are fully covered by external CCTV and lighting is provided for both illumination and security purposes.

The future façade treatment to replace the Pyrmont Street entry will be designed to respect the architectural treatment, whilst creating interest / activation in the streetscape in response to the City's concerns.

It should be noted that Global Switch has already installed additional street lighting on the Pyrmont Street frontage of the site in accordance with the City's approved public domain works that also provide additional security and lighting in this area.

Staged Construction Certificates


Global Switch has engaged AED Group to provide independent advice relating to construction certification. AED Group has confirmed that it is possible to stage Construction Certificates so that façade elements are contained within a

separate construction certificate.

Based on this advice, Global Switch is prepared to accept a condition which requires the Pyrmont Street facade treatment to be resolved and approved prior to issue of the "relevant Construction Certificate".

We trust that the above response addresses the matters raised in the City's submission. If the Department or the City requires any further information or clarification about the concept for the Pyrmont Street facade, please do not hesitate to contact Helen Mulcahy Urban Planning on (02) 9798 0935.

Yours sincerely,



Meghan Redfern

Assistant Development Manager, Sydney

D +61 (0) 2 9566 7033

M + 61 475 962 370

E mredfern@globalswitch.com

Global Switch Stage 2

Lower Ground Facade Lighting

DRAFT

Global Switch Stage 2
Lower Ground Facade Lighting

Project: Global Switch Stage 2
Drawing No. S26406-033-NSK-01[B]
Rev Date 15.06.2015
DE

NDYLIGHT
LIGHTING DESIGN

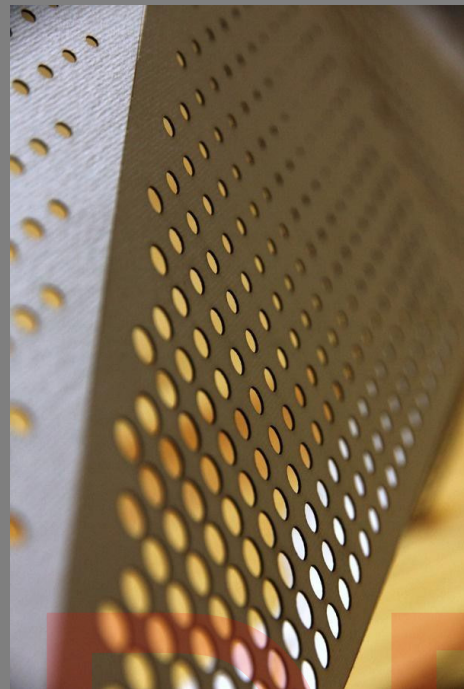
Global Switch Stage 2

Lower Ground Facade Lighting

Perforated screen panelling allows for two illuminated planes. Illuminating these two planes with varying colour hue/saturation creates a dynamic visual effect and contrast.

Back lit wall lighting to silhouette facade screen panelling. Surface mounted linear profile with narrow optics grazing up the wall.

Front projection (flood lighting) via concealed luminaires at high level beneath awning canopy.



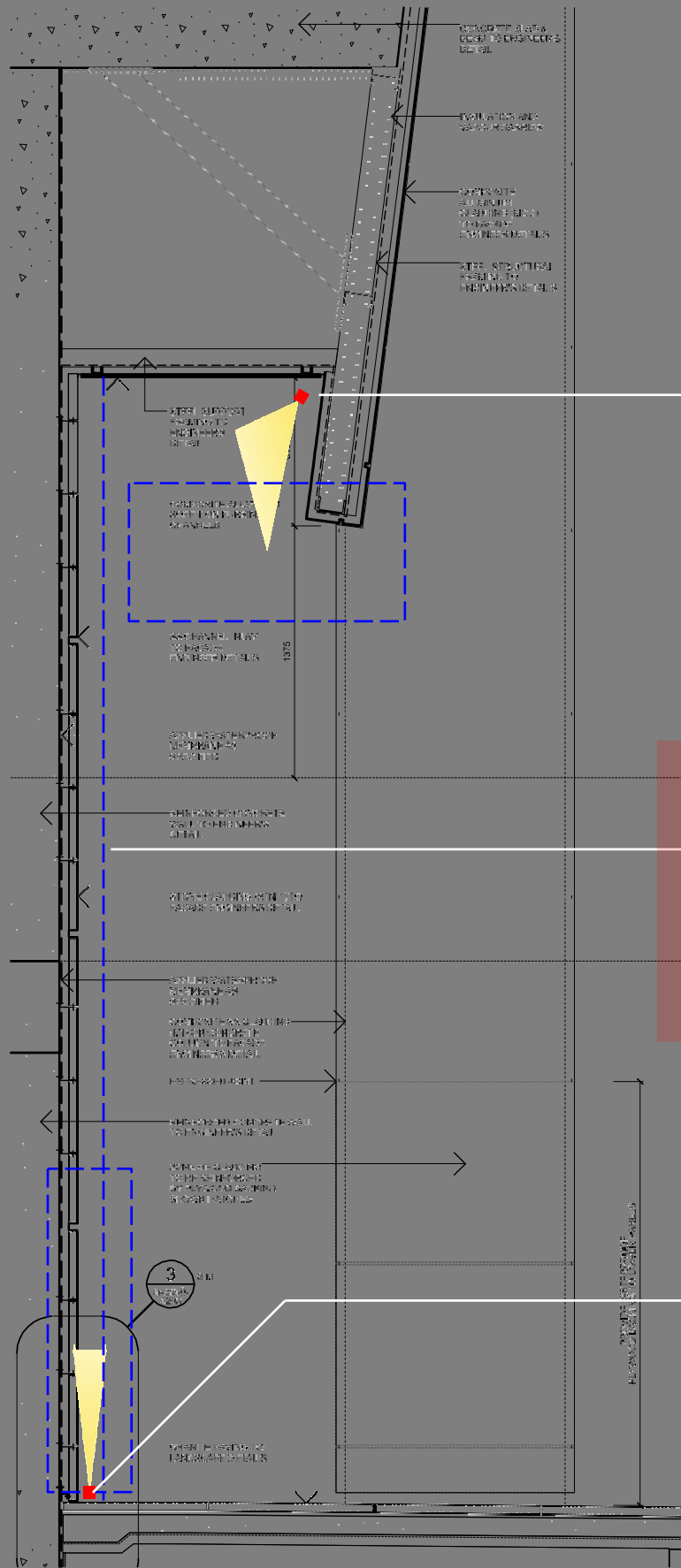
Global Switch Stage 2 Lower Ground Facade Lighting

Project: Global Switch Stage 2
Drawing No. S26406-033-NSK-01[B]
Rev Date 15.06.2015
DE

NDYLIGHT
LIGHTING DESIGN

Global Switch Stage 2

Lower Ground Facade Lighting



Section Detail

Type X1

Surface mounted linear projectors hidden behind facade reveal. Provides illumination to the front face of the perforated screen panelling. Can be colour change (RGBW LED). Access/maintenance via scissor lift.

Luminaire Option: Philips Color Kinetics • ColorGraze MX4 Powercore

Perforated or Screen Panelling. Pattern/material needs to be developed with Architect.

Type X2

Surface mounted linear projectors hidden behind perforated screen panelling. Provides a silhouette/backlighting to the perforated screen panelling. Can be colour change (RGBW LED). Access/maintenance via removeable panelling.

DRAFT



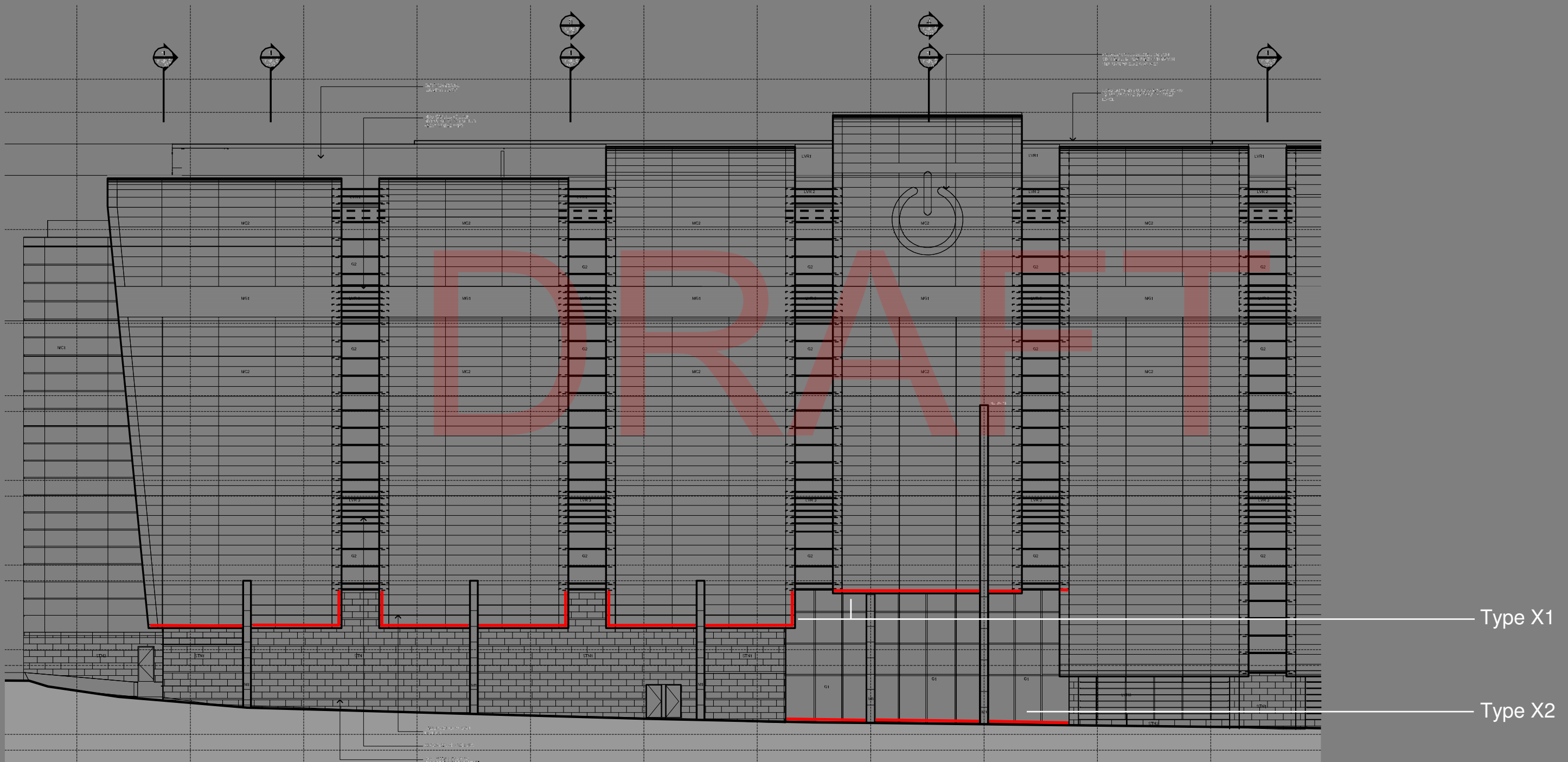
Global Switch Stage 2
Lower Ground Facade Lighting

Project: Global Switch Stage 2
Drawing No. S26406-033-NSK-01[B]
Rev Date 15.06.2015
DE

NDYLIGHT
LIGHTING DESIGN

Global Switch Stage 2

Lower Ground Facade Lighting



Type X1
Type X2

Elevation Detail

Global Switch Stage 2
Lower Ground Facade Lighting

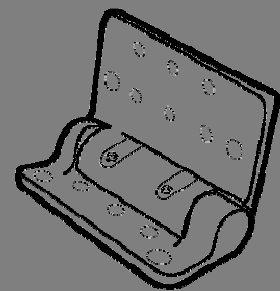
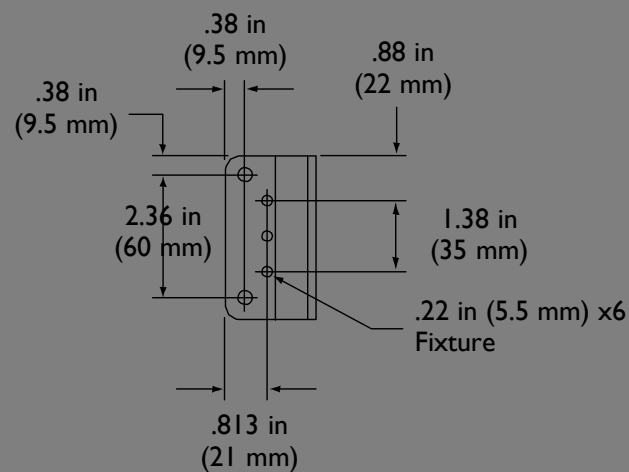
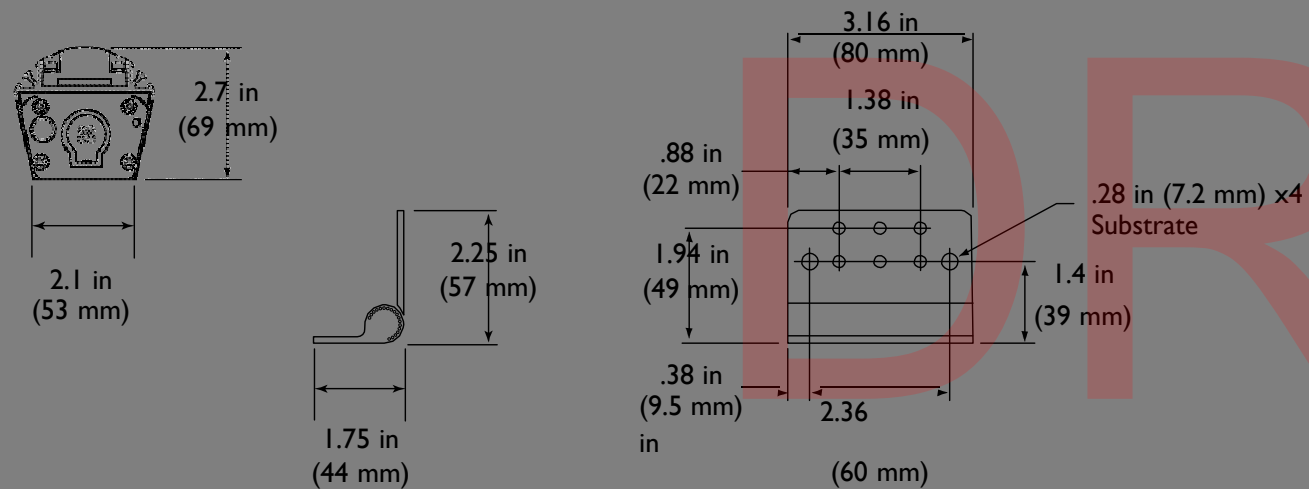
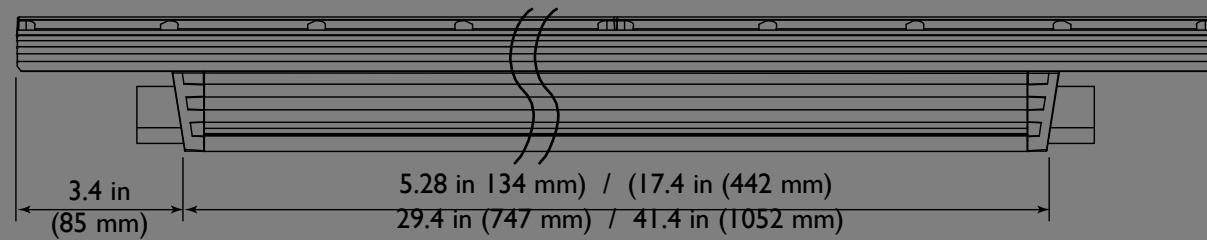
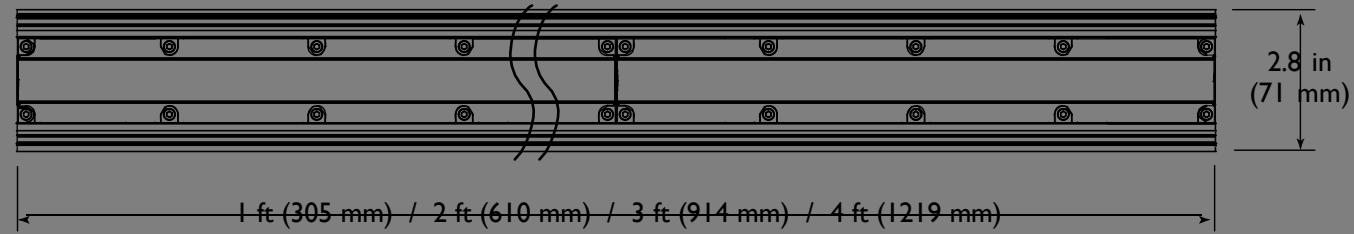
Project: Global Switch Stage 2
Drawing No. S26406-033-NSK-01[B]
Rev Date 15.06.2015
DE

NDYLIGHT
LIGHTING DESIGN

The lighting concept depicted above is illustrative only and requires further development.

Global Switch Stage 2

Dimensions



Lower Ground Facade Lighting

Type X1 & X2
 Philips Color Kinetics • ColorGraze MX4 Powercore
 Exterior quality RGBW surface mounted linear LED projector.



Global Switch Stage 2 Lower Ground Facade Lighting

Project: Global Switch Stage 2
 Drawing No. S26406-033-NSK-01[B]
 Rev Date 15.06.2015
 DE

NDYLIGHT
 LIGHTING DESIGN