

Appendix C

Communications material

COMMUNITY CONSULTATION

IFL is committed to keeping the local community informed about the remediation project. The stage one environmental assessment report is now on public display. Stakeholders and the local community are encouraged to read the report, learn more about the project, and put forward their views by making a submission. IFL will carefully review the issues raised in submissions before the final report is submitted to the Department of Planning for assessment.

Community information display

For members of the community who are interested in learning more about the remediation project, there will be a public

information display at Club Macquarie, 458 Lake Road, Argenton, on Thursday 11 December, from 4pm to 7pm.

The purpose of this information display is to give the local community the opportunity to learn more about the project and to raise issues and questions that they may have about the stage one works. Project representatives will be at the information display to answer your enquiries.

IFL is interested in hearing your feedback and you are encouraged to contact the remediation project representative, Jane Deane, on (02) 9248 9800 or email to jdeane@manidisroberts.com.au with any enquiries about the project.



View across the Cockle Creek site to the neighbouring Pasmenco site, where a lead smelter operated for over a century before the plant was closed in 2003.

Further information:

For further information about this project please contact IFL's project representative, Jane Deane, on (02) 9248 9800 or email jdeane@manidisroberts.com.au.

Postal address: Incitec Pivot Limited (ABN 42 004 080 264)
PO Box 148, Mayfield NSW 2304



COCKLE CREEK UPDATE

Community newsletter

December 2008

Cockle Creek remediation project – stage one proposal now on public exhibition

PLANS are under way for remediation of the Cockle Creek fertiliser-manufacturing site owned by Incitec Fertilizers Limited (IFL), a wholly owned subsidiary of Incitec Pivot Limited (IPL). Members of the public are invited to have their say on the first stage of the remediation proposal, which is on exhibition for comment until Monday 22 December 2008.

HAVE YOUR SAY

IFL has prepared an environmental assessment report for stage one of the Cockle Creek remediation project. The first stage of remediation works involves the treatment of contaminated groundwater in a localised area and also requires the removal of a contaminated timber heritage railway gantry. The environmental assessment report details the works involved in stage one of the project, the potential impacts and recommended strategies for their management.

The environmental assessment report is now on exhibition for comment until close of business on Monday 22 December 2008 and members of the public are invited to submit their comments to the NSW Department of Planning. IFL will carefully review the issues raised in submissions before the final report is submitted to the Department of Planning for assessment.

Where to find a copy of the stage one environmental assessment report

A copy of the environmental assessment report is available from the Department of Planning's website at www.planning.nsw.gov.au (go to Major

Project Assessments/On Exhibition/Major Projects Part 3A) or in About Us/HSEC at www.incitecpivot.com.au. Alternatively, you can contact the Department of Planning on 1300 305 695 to request a CD-ROM copy to be sent to you free of charge. A printed copy of the environmental assessment report is also available for review at Lake Macquarie City Council Customer Service Centre, 126-138 Main Road, Speers Point, NSW 2284.

How to submit your comments

Written submissions regarding the stage one environmental assessment report will be accepted by the Department of Planning until close of business Monday 22 December 2008. Written submissions should be forwarded via mail, fax or email as follows:

Mail:

Major Development Assessment
Department of Planning
GPO Box 39
Sydney NSW 2001

Fax: (02) 9228 6466

Email:

plan_comment@planning.nsw.gov.au

MORE ABOUT STAGE ONE OF THE COCKLE CREEK REMEDIATION PROJECT

STAGE one of the Cockle Creek remediation project involves the treatment of localised groundwater contamination on the IFL Cockle Creek site. The location of these areas is shown in the aerial photograph on the right.

The groundwater contamination includes heavy metals arising from the site's long industrial history and its previous use as a superphosphate plant. Treatment of the groundwater is necessary to minimise health and environmental impacts currently affecting the site and surrounding areas.

Due to the location of the proposed groundwater treatment system on the Cockle Creek site, a disused timber railway gantry will need to be demolished. While the gantry is not listed on any heritage register, it has been assessed as having local heritage significance.

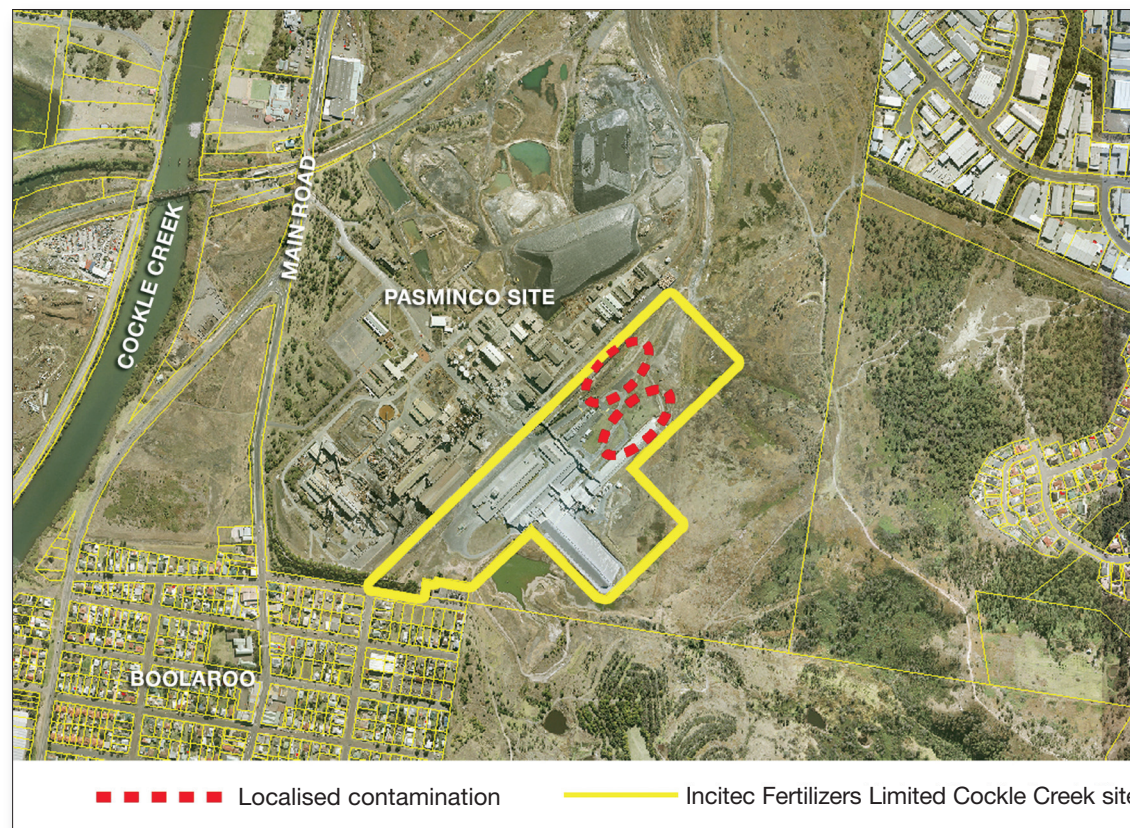
Unfortunately, because the timber of the gantry is contaminated, adaptive reuse or relocation of the gantry is not possible. The details and characteristics of the gantry will be recorded and photographed before demolition to capture its heritage significance to the local area.

Further and more detailed information about stage one of the remediation project can be found within the environmental assessment report, which is currently on public exhibition.

FERTILISER MANUFACTURING AT THE COCKLE CREEK SITE

IFL has owned and operated the Cockle Creek superphosphate plant since 1969. The site is currently used for the manufacture and distribution of agricultural fertilisers. The manufacture of fertiliser at the site is expected to stop by September 2009 to allow the proposed demolition and remediation project to be completed.

When the plant closes, fertiliser supplies to NSW farmers will be maintained through the temporary use of the Cockle Creek site for distribution while the remediation works get under way. Fertiliser will also continue to be despatched from IFL's distribution centres at Kooragang Island and Port Kembla.



Aerial photograph showing the location of localised groundwater contamination on the IFL Cockle Creek site.

QUICK FACTS ABOUT STAGE ONE OF THE COCKLE CREEK REMEDIATION PROJECT

- ✿ IFL has prepared an environmental assessment report for stage one works of the Cockle Creek remediation project. The report is now on public exhibition and open for comment until 22 December 2008.
- ✿ The main aim of stage one remediation works is to treat areas of localised groundwater contamination on the Cockle Creek site.
- ✿ Following stage one, a second stage of works is proposed that will involve the demolition of existing buildings, the remediation of soil and the construction of a purpose-built cell to contain the contaminated soil. IFL will prepare an environmental assessment report for stage two works and the public will have the opportunity to review the report and make comment.
- ✿ If approved, the Cockle Creek remediation project would improve the environment and would return the site to a condition suitable for a range of future uses, including residential and open space development.