

DRAWING INDEX		
DWG. No.	DESCRIPTION	REVISION
YC0229-1E1-D01	COVER SHEET & LOCALITY PLAN	B
YC0229-1E1-D02	INDEX SHEET	F
YC0229-1E1-D03	SCOPE OF WORKS & KEY SHEET PLAN	F
YC0229-1E1-D04	MISSING LINK CONSTRUCTION STAGING PLAN	C
YC0229-1E1-A01	ALIGNMENT DETAILS - SHEET 1 OF 2	D
YC0229-1E1-A02	ALIGNMENT DETAILS - SHEET 2 OF 2	C
YC0229-1E1-E01	EROSION & SEDIMENT CONTROL PLAN - SHEET 1 OF 2	F
YC0229-1E1-E02	EROSION & SEDIMENT CONTROL PLAN - SHEET 2 OF 2	E
YC0229-1E1-E03	SEDIMENT BASIN SETOUT DETAILS - SHEET 1 OF 3	C
YC0229-1E1-E04	SEDIMENT BASIN SETOUT DETAILS - SHEET 2 OF 3	C
YC0229-1E1-E05	SEDIMENT BASIN SETOUT DETAILS - SHEET 3 OF 3	A
YC0229-1E1-EC01	BULK EARTHWORKS CUT / FILL PLAN - SHEET 1 OF 2	F
YC0229-1E1-EC02	BULK EARTHWORKS CUT / FILL PLAN - SHEET 2 OF 2	F
YC0229-1E1-EW01	BULK EARTHWORKS LAYOUT PLAN - SHEET 1 OF 8	F
YC0229-1E1-EW02	BULK EARTHWORKS LAYOUT PLAN - SHEET 2 OF 8	E
YC0229-1E1-EW03	BULK EARTHWORKS LAYOUT PLAN - SHEET 3 OF 8	E
YC0229-1E1-EW04	BULK EARTHWORKS LAYOUT PLAN - SHEET 4 OF 8	E
YC0229-1E1-EW05	BULK EARTHWORKS LAYOUT PLAN - SHEET 5 OF 8	E
YC0229-1E1-EW06	BULK EARTHWORKS LAYOUT PLAN - SHEET 6 OF 8	E
YC0229-1E1-EW07	BULK EARTHWORKS LAYOUT PLAN - SHEET 7 OF 8	E
YC0229-1E1-EW08	BULK EARTHWORKS LAYOUT PLAN - SHEET 8 OF 8	E
YC0229-1E1-EW09	PRECINCT 1 & 2 BORROW AREA EARTHWORKS PLAN - SHEET 1 OF 4	C
YC0229-1E1-EW10	PRECINCT 1 & 2 BORROW AREA EARTHWORKS PLAN - SHEET 2 OF 4	C
YC0229-1E1-EW11	PRECINCT 1 & 2 BORROW AREA EARTHWORKS PLAN - SHEET 3 OF 4	C
YC0229-1E1-EW12	PRECINCT 1 & 2 BORROW AREA EARTHWORKS PLAN - SHEET 4 OF 4	C
YC0229-1E1-EW13	PRECINCT 9 BORROW AREA EARTHWORKS PLAN	A
YC0229-1E1-EW14	PRECINCT 11 BORROW AREA EARTHWORKS PLAN	A
YC0229-1E1-ES01	BULK EARTHWORKS SECTIONS - SHEET 1 OF 2	D
YC0229-1E1-ES02	BULK EARTHWORKS SECTIONS - SHEET 2 OF 2	D
YC0229-1E1-ES03	BULK EARTHWORKS TYPICAL SECTIONS	D
YC0229-1E1-ES04	PRECINCT 1 & 2 BORROW AREA EARTHWORKS SECTIONS - SHEET 1 OF 4	D
YC0229-1E1-ES05	PRECINCT 1 & 2 BORROW AREA EARTHWORKS SECTIONS - SHEET 2 OF 4	D
YC0229-1E1-ES06	PRECINCT 1 & 2 BORROW AREA EARTHWORKS SECTIONS - SHEET 3 OF 4	D
YC0229-1E1-ES07	PRECINCT 1 & 2 BORROW AREA EARTHWORKS SECTIONS - SHEET 4 OF 4	D
YC0229-1E1-ES08	PRECINCT 9 BORROW AREA EARTHWORKS SECTIONS	A
YC0229-1E1-ES09	PRECINCT 11 BORROW AREA EARTHWORKS SECTIONS	A
YC0229-1E1-DL01	MAJOR CENTRAL OPEN DRAIN LONGITUDINAL SECTION - SHEET 1 OF 3	D
YC0229-1E1-DL02	MAJOR CENTRAL OPEN DRAIN LONGITUDINAL SECTION - SHEET 2 OF 3	D
YC0229-1E1-DL03	MAJOR CENTRAL OPEN DRAIN LONGITUDINAL SECTION - SHEET 3 OF 3	D
YC0229-1E1-XS01	MAJOR CENTRAL OPEN DRAIN CROSS SECTIONS - SHEET 1 OF 10	D
YC0229-1E1-XS02	MAJOR CENTRAL OPEN DRAIN CROSS SECTIONS - SHEET 2 OF 10	D
YC0229-1E1-XS03	MAJOR CENTRAL OPEN DRAIN CROSS SECTIONS - SHEET 3 OF 10	D

DRAWING INDEX		
DWG. No.	DESCRIPTION	REVISION
YC0229-1E1-XS04	MAJOR CENTRAL OPEN DRAIN CROSS SECTIONS - SHEET 4 OF 10	D
YC0229-1E1-XS05	MAJOR CENTRAL OPEN DRAIN CROSS SECTIONS - SHEET 5 OF 10	D
YC0229-1E1-XS06	MAJOR CENTRAL OPEN DRAIN CROSS SECTIONS - SHEET 6 OF 10	D
YC0229-1E1-XS07	MAJOR CENTRAL OPEN DRAIN CROSS SECTIONS - SHEET 7 OF 10	D
YC0229-1E1-XS08	MAJOR CENTRAL OPEN DRAIN CROSS SECTIONS - SHEET 8 OF 10	D
YC0229-1E1-XS09	MAJOR CENTRAL OPEN DRAIN CROSS SECTIONS - SHEET 9 OF 10	D
YC0229-1E1-XS10	MAJOR CENTRAL OPEN DRAIN CROSS SECTIONS - SHEET 10 OF 10	D
YC0229-1E1-BIS04	MINOR OPEN DRAIN 5 CROSS SECTIONS SHEET 1 OF 3	D
YC0229-1E1-XS15	MINOR OPEN DRAIN 5 CROSS SECTIONS SHEET 3 OF 3	D
YC0229-1E1-BIS08	MINOR OPEN DRAIN 6 CROSS SECTIONS SHEET 1 OF 2	D
YC0229-1E1-BIS05	MINOR OPEN DRAIN 6 CROSS SECTIONS SHEET 2 OF 2	B
YC0229-1E1-XS17	MINOR OPEN DRAIN 7 CROSS SECTION SHEET 2 OF 2	D
YC0229-1E1-DL07	MINOR OPEN DRAIN 7 LONGITUDINAL SECTION	D
YC0229-1E1-XS18	MINOR OPEN DRAIN 7 CROSS SECTION SHEET 1 OF 3	D
YC0229-1E1-XS19	MINOR OPEN DRAIN 7 CROSS SECTION SHEET 2 OF 3	D
YC0229-1E1-XS20	MINOR OPEN DRAIN 7 CROSS SECTION SHEET 3 OF 3	D
YC0229-1E1-DL08	MINOR OPEN DRAIN 1 LONGITUDINAL SECTION	C
YC0229-1E1-CL01	COBAKI PARKWAY LONGITUDINAL SECTION	C
YC0229-1E1-CX01	COBAKI PARKWAY CROSS SECTIONS - SHEET 1 OF 7	C
YC0229-1E1-CX02	COBAKI PARKWAY CROSS SECTIONS - SHEET 2 OF 7	C
YC0229-1E1-CX03	COBAKI PARKWAY CROSS SECTIONS - SHEET 3 OF 7	C
YC0229-1E1-CX04	COBAKI PARKWAY CROSS SECTIONS - SHEET 4 OF 7	C
YC0229-1E1-CX05	COBAKI PARKWAY CROSS SECTIONS - SHEET 5 OF 7	C
YC0229-1E1-CX06	COBAKI PARKWAY CROSS SECTIONS - SHEET 6 OF 7	C
YC0229-1E1-CX07	COBAKI PARKWAY CROSS SECTIONS - SHEET 7 OF 7	C
YC0229-1E1-SL01	SANDY ROAD LONGITUDINAL SECTION - SHEET 1 OF 2	D
YC0229-1E1-SL02	SANDY ROAD LONGITUDINAL SECTION - SHEET 2 OF 2	D
YC0229-1E1-SX01	SANDY ROAD CROSS SECTIONS - SHEET 1 OF 7	D
YC0229-1E1-SX02	SANDY ROAD CROSS SECTIONS - SHEET 2 OF 7	D
YC0229-1E1-SX03	SANDY ROAD CROSS SECTIONS - SHEET 3 OF 7	D
YC0229-1E1-SX04	SANDY ROAD CROSS SECTIONS - SHEET 4 OF 7	D
YC0229-1E1-SX05	SANDY ROAD CROSS SECTIONS - SHEET 5 OF 7	D
YC0229-1E1-SX06	SANDY ROAD CROSS SECTIONS - SHEET 6 OF 7	C
YC0229-1E1-SX07	SANDY ROAD CROSS SECTIONS - SHEET 7 OF 7	C
YC0229-1E1-TS01	COBAKI PARKWAY & SANDY ROAD TYPICAL CROSS SECTIONS	C
YC0229-1E1-SW01	CULVERT 'A' LOCATION & DETAILS - SHEET 1 OF 2	C
YC0229-1E1-SW02	CULVERT 'A' LOCATION & DETAILS - SHEET 2 OF 2	C
YC0229-1E1-SW03	CULVERT 'B' LOCATION & DETAILS	C
YC0229-1E1-SW04	CULVERT 'C' LOCATION & DETAILS	C
YC0229-1E1-SW05	LOW FLOW DIVERSION BUND LAYOUT PLAN	C
YC0229-1E1-SW06	CENTRAL OPEN SPACE DRAINAGE INTERSECTION DETAILS - SHEET 1 OF 2	D
YC0229-1E1-SW07	CENTRAL OPEN SPACE DRAINAGE INTERSECTION DETAILS - SHEET 2 OF 2	D

T.S.C. REFERENCE DRAWINGS	
DWG. No.	DESCRIPTION
S.D.501	EROSION & SILTATION PREVENTION DEVICES SHEET 1
S.D.502	EROSION & SILTATION PREVENTION DEVICES SHEET 2

INSTITUTION OF ENGINEERS, AUSTRALIA GUIDELINES	
DESCRIPTION	
SOIL EROSION & SEDIMENT CONTROL - ENGINEERING GUIDELINES FOR QUEENSLAND CONSTRUCTION SITES - JUNE 1996	

ROADS AND TRAFFIC AUTHORITY, NSW	
DWG. No.	DESCRIPTION
MD.R11.A01.A.2	INSTALLATION, BEDDING AND FILLING/BACKFILLING AGAINST/OVER CONCRETE PIPE CULVERTS

QUEENSLAND GOVERNMENT DEPARTMENT OF TRANSPORT AND MAIN ROADS		
DWG. No.	CATEGORY	DESCRIPTION
1131	RC SLAB DECK CULVERT - 2500 SPAN	CONSTRUCTION OF FOUNDATIONS, APRONS WALLS AND WINGS
1303	RC BOX CULVERTS & SLAB LINK BOX CULVERTS	CONSTRUCTION OF REINFORCED CONCRETE WINGWALLS AND HEADWALLS
1305	ENDS TO PIPE CULVERTS	GENERAL ARRANGEMENT AND INSTALLATION OF WINGWALLS, HEADWALLS AND APRONS
1318	RC BOX CULVERTS & SLAB LINK BOX CULVERTS	CONSTRUCTION OF BASES WITH RECESSES AND APRONS
1319	RC BOX CULVERTS & SLAB LINK BOX CULVERTS	CONSTRUCTION OF UNREINFORCED WINGWALLS AND RC HEADWALLS H = 750 - 2400

STATUS		CONSTRUCTION CERTIFICATE FOR APPROVAL	
F	PRECINCT 9 AND PRECINCT 11 BORROW AREAS ADDED	M.B.	11.12.13
E	MINOR OPEN DRAIN 5 ADDED TO DRAWING SET	T.W.	02.10.13
D	BULK EARTHWORKS CONSTRUCTION CERTIFICATE	M.G.	15.02.13
C	RESPONSE TO 3rd PARTY SWMP REVIEW	H.W.	18.10.12
B	RESPONSE TO TSC REQUEST FOR INFORMATION (RFI)	H.W.	04.05.12
A	ORIGINAL ISSUE	G.S.	18.03.11
REV	DESCRIPTION	DRAWN	DATE

THIS DESIGN AND PLAN IS COPYRIGHT AND IS NOT TO BE USED OR REPRODUCED WHOLLY OR IN PART OR TO BE USED ON ANY PROJECT WITHOUT THE WRITTEN PERMISSION OF YEATS CONSULTING PTY LTD

DRAWING IS NOT TO BE SCALED

SCALE (AT ORIGINAL SHEET SIZE)

N/A

CLIENT

LEDA MANORSTEAD Pty Ltd



PROJECT

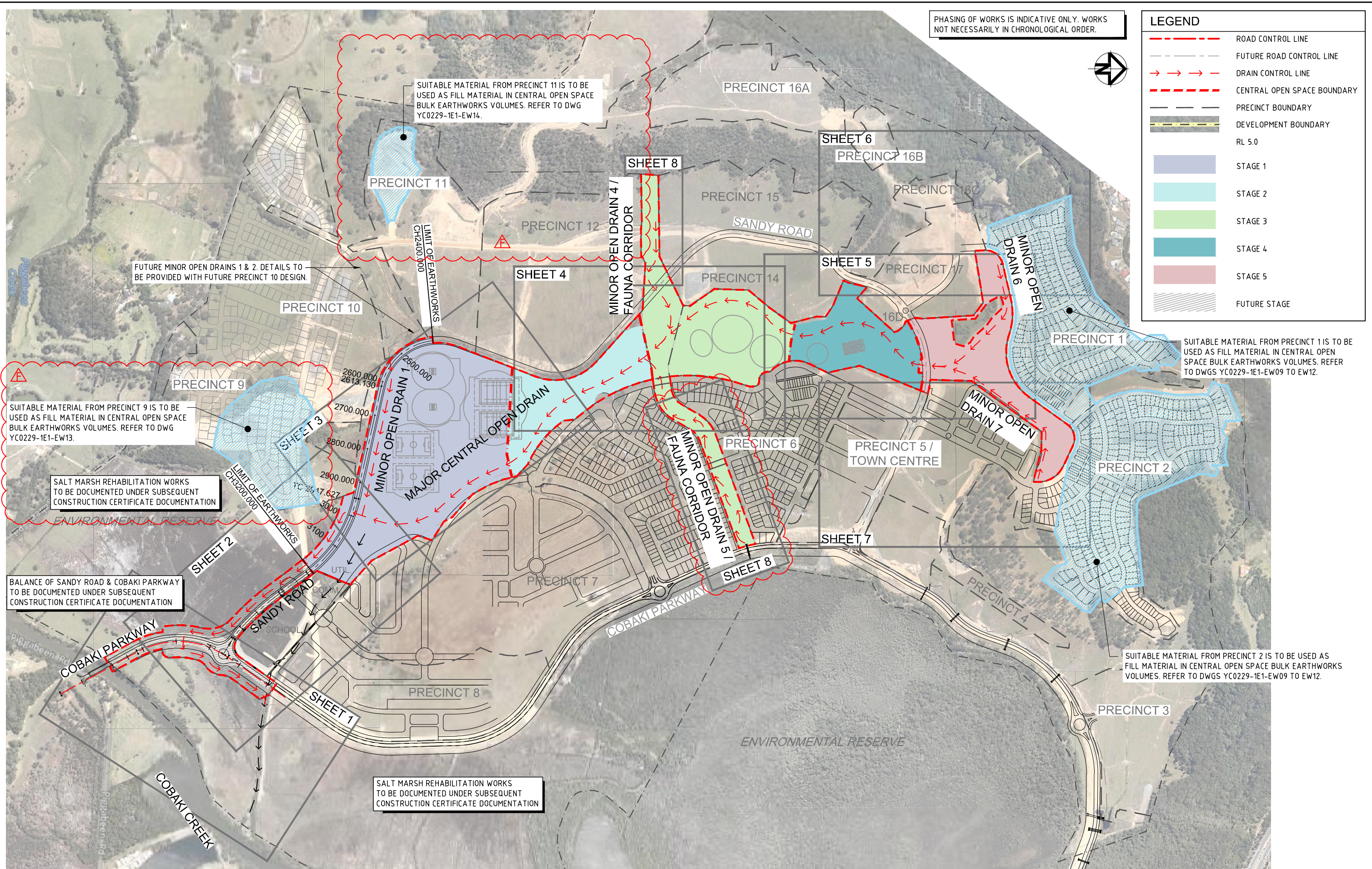
COBAKI, TWEED HEADS WEST
CENTRAL OPEN SPACE
BULK EARTHWORKS
CONSTRUCTION CERTIFICATE
CIVIL ENGINEERING DRAWINGS



LEVEL 1, 193 FERRY ROAD SOUTHPORT QLD 4215 AUSTRALIA
T 07 5558 4200 F 07 5503 1672 info@yeats.com.au www.yeats.com.au

TITLE INDEX SHEET					
TASK	BY	INITIAL	DATE	APPROVED	REVISION
REVIEW	CS		18.03.11		
DESIGN	CJE		18.03.11		
DRAWN	GS		18.03.11		
				RPEQ No	7817
				DRAWING NUMBER	YC0229-1E1-D02
				REVISION	F

YEATS CONSULTING PTY LTD 18/03/2013 10:58 AM 18/03/2013 10:58 AM



PHASING OF WORKS IS INDICATIVE ONLY. WORKS NOT NECESSARILY IN CHRONOLOGICAL ORDER.

LEGEND	
	ROAD CONTROL LINE
	FUTURE ROAD CONTROL LINE
	DRAIN CONTROL LINE
	CENTRAL OPEN SPACE BOUNDARY
	PRECINCT BOUNDARY
	DEVELOPMENT BOUNDARY
	RL 5.0
	STAGE 1
	STAGE 2
	STAGE 3
	STAGE 4
	STAGE 5
	FUTURE STAGE



SUITABLE MATERIAL FROM PRECINCT 11 IS TO BE USED AS FILL MATERIAL IN CENTRAL OPEN SPACE BULK EARTHWORKS VOLUMES. REFER TO DWG YC0229-1E1-EW14.

FUTURE MINOR OPEN DRAINS 1 & 2. DETAILS TO BE PROVIDED WITH FUTURE PRECINCT 10 DESIGN.

SUITABLE MATERIAL FROM PRECINCT 9 IS TO BE USED AS FILL MATERIAL IN CENTRAL OPEN SPACE BULK EARTHWORKS VOLUMES. REFER TO DWG YC0229-1E1-EW13.

SALT MARSH REHABILITATION WORKS TO BE DOCUMENTED UNDER SUBSEQUENT CONSTRUCTION CERTIFICATE DOCUMENTATION

BALANCE OF SANDY ROAD & COBAKI PARKWAY TO BE DOCUMENTED UNDER SUBSEQUENT CONSTRUCTION CERTIFICATE DOCUMENTATION

SALT MARSH REHABILITATION WORKS TO BE DOCUMENTED UNDER SUBSEQUENT CONSTRUCTION CERTIFICATE DOCUMENTATION

SUITABLE MATERIAL FROM PRECINCT 2 IS TO BE USED AS FILL MATERIAL IN CENTRAL OPEN SPACE BULK EARTHWORKS VOLUMES. REFER TO DWGS YC0229-1E1-EW09 TO EW12.

STATUS	DESCRIPTION	FOR APPROVAL	DATE
F	PRECINCT 9 AND PRECINCT 11 BORROW AREAS ADDED	M.B.	10.12.13
E	MINOR OPEN DRAIN 5 ADDED TO DRAWING SET	T.W.	02.10.13
D	BULK EARTHWORKS CONSTRUCTION CERTIFICATE	M.G.	15.02.13
C	RESPONSE TO 3rd PARTY SWMP REVIEW	H.W.	18.10.12
B	RESPONSE TO TSC REQUEST FOR INFORMATION (RFI)	H.W.	04.05.12
A	ORIGINAL ISSUE	G.S.	18.03.11
REV	DESCRIPTION	DRAWN	DATE

THIS DESIGN AND PLAN IS COPYRIGHT AND IS NOT TO BE USED OR REPRODUCED WHOLLY OR IN PART OR TO BE USED ON ANY PROJECT WITHOUT THE WRITTEN PERMISSION OF YEATS CONSULTING PTY LTD

DRAWING IS NOT TO BE SCALED

SCALE (AT ORIGINAL SHEET SIZE)

SCALE 100 50 0 100 200 150000

ORIGINAL SHEET SIZE

A1

CLIENT

LEDA MANORSTEAD Pty Ltd

PROJECT

COBAKI, TWEED HEADS WEST
CENTRAL OPEN SPACE
BULK EARTHWORKS
CONSTRUCTION CERTIFICATE
CIVIL ENGINEERING DRAWINGS

LEVEL 1, 193 FERRY ROAD SOUTHPORT QLD 4215 AUSTRALIA
T 07 5558 4200 F 07 5503 1672 info@yeats.com.au www.yeats.com.au

TITLE					
SCOPE OF WORKS & KEY SHEET PLAN					
TASK	BY	INITIAL	DATE	APPROVED	RPEQ No 7817
REVIEW	CS		18.03.11		
DESIGN	CJE		18.03.11		
DRAWN	GS		18.03.11		
				DRAWING NUMBER	REVISION
				YC0229-1E1-D03	F

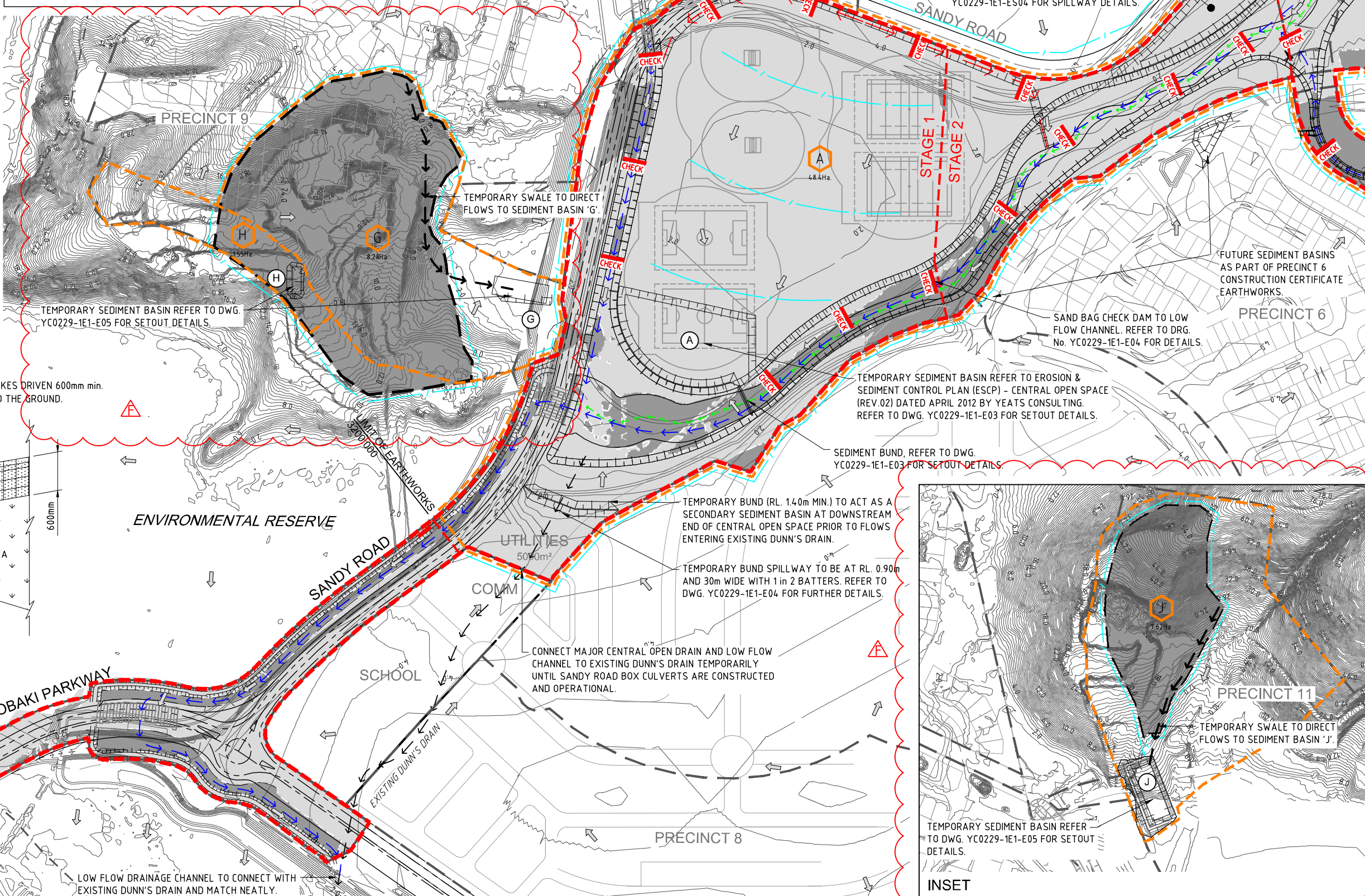
LEGEND

- PROPOSED SURFACE CONTOURS
- TOP/TOE OF BATTER
- SEDIMENT FENCE. REFER TO DETAIL.
- CENTRELINE OF OPEN DRAIN
- CENTRELINE OF LOW FLOW CHANNEL
- EXISTING DUNN'S DRAIN
- STAGE BOUNDARY
- OPEN SPACE BOUNDARY
- PRECINCTS 1 & 2 BORROW AREA
- STATE BOUNDARY
- GRAVEL CHECK DAM. REFER TO DRG. No. YC0229-1E1-E04 FOR DETAILS.
- DIRECTION OF OVERLAND FLOW
- SEDIMENT POND. REFER TO DRG. No. YC0229-1E1-E03 & E04 FOR DETAILS.
- CATCHMENT BOUNDARY
- CATCHMENT LABEL
- FILL
- CUT

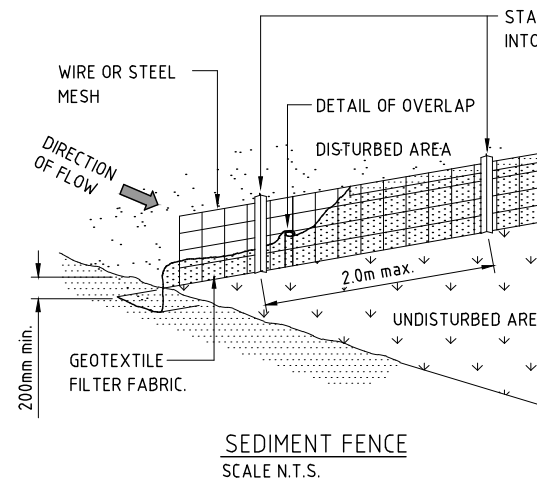
NOTES

1. SEDIMENT & EROSION CONTROL PLAN IS TO BE READ IN CONJUNCTION WITH THE SMEC CONSTRUCTION ENVIRONMENT MANAGEMENT PLAN (CEMP) DATED JANUARY 2012 AND THE EROSION & SEDIMENT CONTROL PLAN (ESCP) - CENTRAL OPEN SPACE (REV.02) DATED APRIL 2012 BY YEATS CONSULTING. FOR SEDIMENT BASIN DETAILS REFER TO DWG. YC0229-1E1-E03 & E04 AND 'BEST PRACTICE EROSION & SEDIMENT CONTROL' 2008 GUIDELINES BY IECA.
2. FOR SEDIMENT AND EROSION DETAILS REFER TO T.S.C. STANDARD DWG No. SD 501 - SD 502.

REFER INSET FOR CONTINUATION



DRAINAGE AREA 0.6ha. MAX. SLOPE GRADIENT 1 : 2 MAX. SLOPE LENGTH 60m MAX.



STAKES DRIVEN 600mm min. INTO THE GROUND.

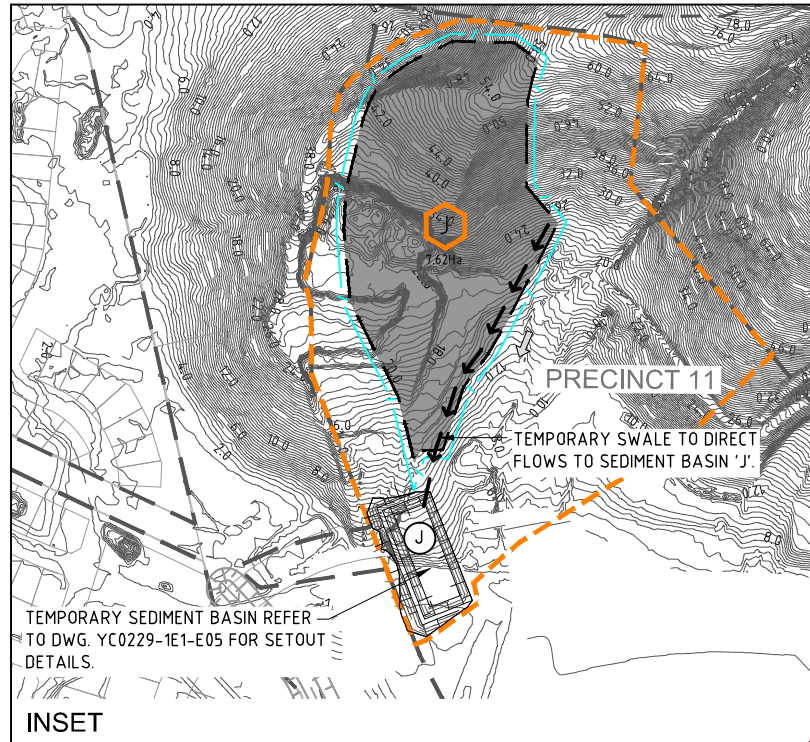
ENVIRONMENTAL RESERVE

SANDY ROAD

COBAKI PARKWAY

COBAKI CREEK

LOW FLOW DRAINAGE CHANNEL TO CONNECT WITH EXISTING DUNN'S DRAIN AND MATCH NEATLY.



STATUS		CONSTRUCTION CERTIFICATE FOR APPROVAL	
F	PRECINCT 9 AND PRECINCT 11 BORROW AREAS ADDED	M.B.	11.12.13
E	MINOR OPEN DRAIN 5 ADDED TO DRAWING SET	T.W.	02.10.13
D	BULK EARTHWORKS CONSTRUCTION CERTIFICATE	M.G.	15.02.13
C	RESPONSE TO 3rd PARTY SWMP REVIEW	H.W.	18.10.12
B	RESPONSE TO TSC REQUEST FOR INFORMATION (RFI)	H.W.	04.05.12
A	ORIGINAL ISSUE	G.S.	18.03.11
REV	DESCRIPTION	DRAWN	DATE

THIS DESIGN AND PLAN IS COPYRIGHT AND IS NOT TO BE USED OR REPRODUCED WHOLLY OR IN PART OR TO BE USED ON ANY PROJECT WITHOUT THE WRITTEN PERMISSION OF YEATS CONSULTING PTY LTD

DRAWING IS NOT TO BE SCALED

SCALE (AT ORIGINAL SHEET SIZE)

SCALE 50 0 50 100 1:2500

ORIGINAL SHEET SIZE

A1

CLIENT

LEDA MANORSTEAD Pty Ltd

PROJECT

COBAKI, TWEED HEADS WEST
CENTRAL OPEN SPACE
BULK EARTHWORKS
CONSTRUCTION CERTIFICATE
CIVIL ENGINEERING DRAWINGS

LEVEL 1, 193 FERRY ROAD SOUTHPORT QLD 4215 AUSTRALIA
T 07 5558 4200 F 07 5503 1672 info@yeats.com.au www.yeats.com.au

TITLE				
EROSION & SEDIMENT CONTROL PLAN SHEET 1 OF 2				
TASK	BY	INITIAL	DATE	APPROVED
REVIEW	CS		18.03.11	RPEQ No 7817
DESIGN	CJE		18.03.11	DRAWING NUMBER
DRAWN	GS		18.03.11	YC0229-1E1-E01
				REVISION
				F