

## 8 MONITORING AND REPORTING

### 8.1 Introduction

Monitoring will be undertaken to determine the effectiveness of mitigation measures implemented. Monitoring will be required during the ‘establishment period<sup>3</sup>’ and ‘maintenance period<sup>4</sup>’ of the project as defined within the Project approval (MP08\_0194). Monitoring of Precincts 1 - 5 EMAs and the proposed East-West Corridor has been separated into three (3) types:

- Baseline monitoring - completed in Management Zones 2 - 8;
- Monitoring of retained vegetation - completed in Management Zones 2 and 3; and
- Rehabilitation monitoring - completed in Management Zones 4 - 8.

Monitoring of exclusion fencing and other infrastructure (e.g. signage) will be completed in accordance with Section 8.5 of the Kings Forest KPOM (JWA 2019).

### 8.2 Baseline Monitoring

#### 8.2.1 Background

Baseline monitoring will be completed by a suitably qualified ecologists within retained habitat areas (Management Zones 2 and 3), compensatory habitat areas (Management Zones 4 and 5) and other proposed revegetation/ regeneration areas (i.e. Management Zones 6 - 8) in accordance with the following sections. Additionally, the bush regeneration team will gather baseline data at each weed treatment site prior to commencement of weed control (refer to SECTION 8.3).

#### 8.2.2 Monitoring Locations

The locations of baseline monitoring within Management Zones 2 - 5 will generally utilise field sites sampled in 2010 during the Tweed Coast Koala Habitat Study (Phillips *et al.* 2011) where appropriate. Additional field sites have been identified to ensure representative sampling of all habitat types (FIGURE 18). The methodology for the Tweed Coast Koala Habitat Study included the positioning of a 600 m x 600 m grid overlaid on the site so as to ensure uniform and unbiased coverage.

Baseline data for other proposed revegetation/regeneration areas (i.e. Management Zones 6 - 8) will be collected from appropriate locations (i.e. suitable PCTs and/or TVMS communities) within the Cudgen Nature Reserve (FIGURE 19). To determine appropriate baseline survey locations within Cudgen Nature Reserve, the TVMS (2004) vegetation mapping was reviewed

---

<sup>3</sup> means the period commencing with the implementation of the relevant approved environmental management plan(s) and ending when the works specified in that plan meet the establishment period performance criteria (as defined by the relevant approved environmental management plan) to the satisfaction of the Secretary. The establishment period represents the time necessary to carry out initial environmental repair, restoration and monitoring prior to ongoing maintenance.

<sup>4</sup> means the period commencing immediately after the end of the establishment period during which environmental management and monitoring works specified in the relevant approved environmental management plan(s) are to be carried out in accordance with the maintenance period performance criteria (as defined by the relevant approved environmental management plan) to the satisfaction of the Secretary.

**LEGEND**

- Area Subject to this Management Plan
- Environmental Management Area (EMA) Boundary (#)
- Precinct Boundary
- Kings Forest Boundary
- Waterbodies & Drainage Lines

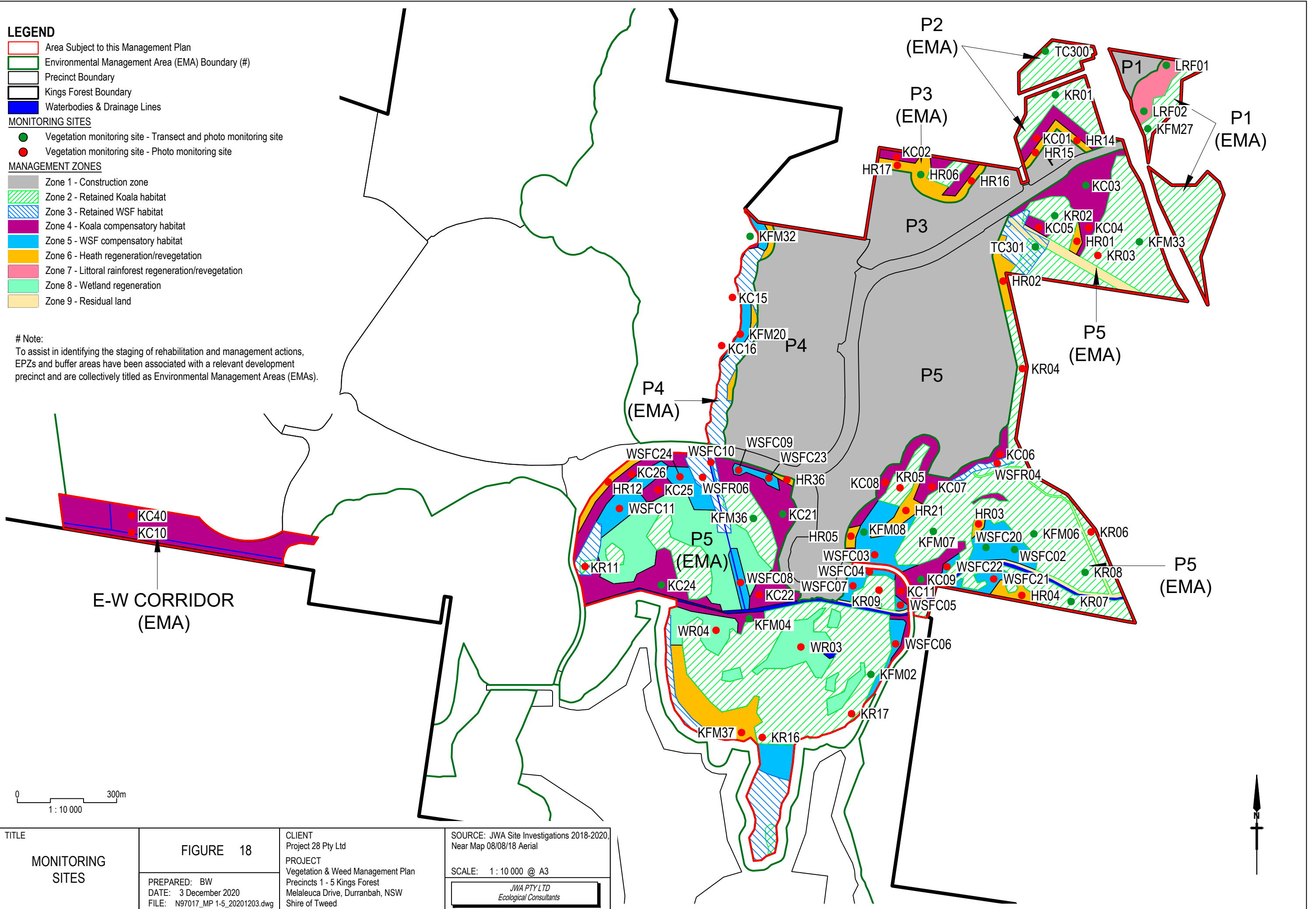
**MONITORING SITES**

- Vegetation monitoring site - Transect and photo monitoring site
- Vegetation monitoring site - Photo monitoring site

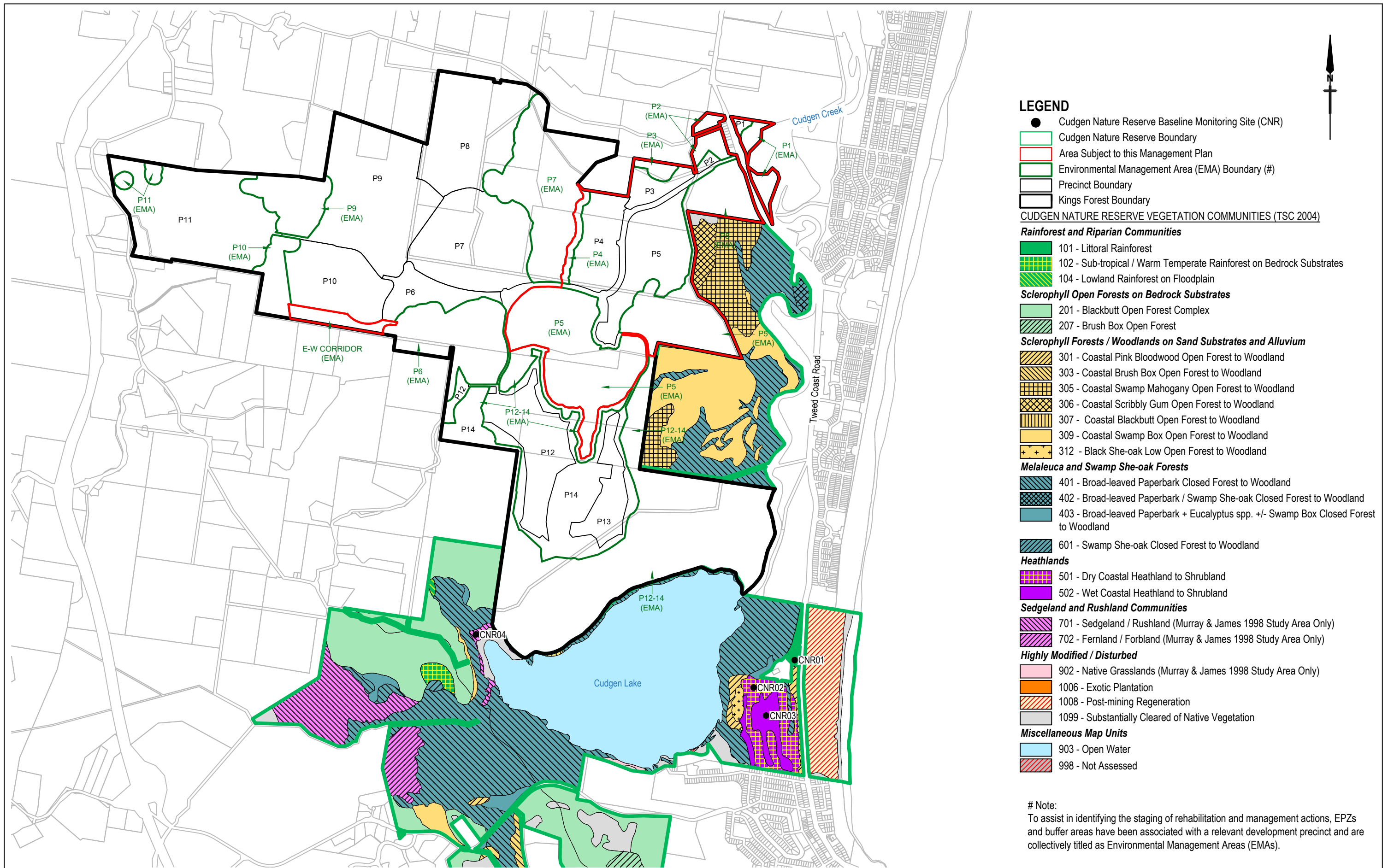
**MANAGEMENT ZONES**

- Zone 1 - Construction zone
- Zone 2 - Retained Koala habitat
- Zone 3 - Retained WSF habitat
- Zone 4 - Koala compensatory habitat
- Zone 5 - WSF compensatory habitat
- Zone 6 - Heath regeneration/revegetation
- Zone 7 - Littoral rainforest regeneration/revegetation
- Zone 8 - Wetland regeneration
- Zone 9 - Residual land

# Note:  
To assist in identifying the staging of rehabilitation and management actions, EPZs and buffer areas have been associated with a relevant development precinct and are collectively titled as Environmental Management Areas (EMAs).



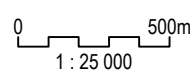
<p>TITLE</p> <p style="text-align: center;"><b>MONITORING SITES</b></p>	<p style="text-align: center;"><b>FIGURE 18</b></p> <p>PREPARED: BW DATE: 3 December 2020 FILE: N97017_MP 1-5_20201203.dwg</p>	<p>CLIENT Project 28 Pty Ltd</p> <p>PROJECT Vegetation &amp; Weed Management Plan Precincts 1 - 5 Kings Forest Melaleuca Drive, Durranbah, NSW Shire of Tweed</p>	<p>SOURCE: JWA Site Investigations 2018-2020, Near Map 08/08/18 Aerial</p> <p>SCALE: 1 : 10 000 @ A3</p> <div style="border: 1px solid black; padding: 2px; text-align: center; font-size: 8px;"> <p>JWA PTY LTD Ecological Consultants</p> </div>
---	--	---	--



**LEGEND**

- Cudgen Nature Reserve Baseline Monitoring Site (CNR)
  - ▭ Cudgen Nature Reserve Boundary
  - ▭ Area Subject to this Management Plan
  - ▭ Environmental Management Area (EMA) Boundary (#)
  - ▭ Precinct Boundary
  - ▭ Kings Forest Boundary
- CUDGEN NATURE RESERVE VEGETATION COMMUNITIES (TSC 2004)**
- Rainforest and Riparian Communities**
- 101 - Littoral Rainforest
  - 102 - Sub-tropical / Warm Temperate Rainforest on Bedrock Substrates
  - 104 - Lowland Rainforest on Floodplain
- Sclerophyll Open Forests on Bedrock Substrates**
- 201 - Blackbutt Open Forest Complex
  - 207 - Brush Box Open Forest
- Sclerophyll Forests / Woodlands on Sand Substrates and Alluvium**
- 301 - Coastal Pink Bloodwood Open Forest to Woodland
  - 303 - Coastal Brush Box Open Forest to Woodland
  - 305 - Coastal Swamp Mahogany Open Forest to Woodland
  - 306 - Coastal Scribbly Gum Open Forest to Woodland
  - 307 - Coastal Blackbutt Open Forest to Woodland
  - 309 - Coastal Swamp Box Open Forest to Woodland
  - 312 - Black She-oak Low Open Forest to Woodland
- Melaleuca and Swamp She-oak Forests**
- 401 - Broad-leaved Paperbark Closed Forest to Woodland
  - 402 - Broad-leaved Paperbark / Swamp She-oak Closed Forest to Woodland
  - 403 - Broad-leaved Paperbark + Eucalyptus spp. +/- Swamp Box Closed Forest to Woodland
  - 601 - Swamp She-oak Closed Forest to Woodland
- Heathlands**
- 501 - Dry Coastal Heathland to Shrubland
  - 502 - Wet Coastal Heathland to Shrubland
- Sedgeland and Rushland Communities**
- 701 - Sedgeland / Rushland (Murray & James 1998 Study Area Only)
  - 702 - Fernland / Forbland (Murray & James 1998 Study Area Only)
- Highly Modified / Disturbed**
- 902 - Native Grasslands (Murray & James 1998 Study Area Only)
  - 1006 - Exotic Plantation
  - 1008 - Post-mining Regeneration
  - 1099 - Substantially Cleared of Native Vegetation
- Miscellaneous Map Units**
- 903 - Open Water
  - 998 - Not Assessed

# Note:  
To assist in identifying the staging of rehabilitation and management actions, EPZs and buffer areas have been associated with a relevant development precinct and are collectively titled as Environmental Management Areas (EMAs).



SOURCE: Tweed Vegetation Management Strategy 2004

SCALE: 1 : 25 000 @ A3

*JWA PTY LTD*  
Ecological Consultants

CLIENT  
Project 28 Pty Ltd

PROJECT  
Vegetation & Weed Management Plan  
Precincts 1 - 5 Kings Forest  
Melaleuca Drive, Duranbah, NSW  
Shire of Tweed

FIGURE 19

PREPARED: BW  
DATE: 14 October 2020  
FILE: N97017\_MP 1-5\_20201013.dwg

TITLE  
CUDGEN NATURE RESERVE - BASELINE VEGETATION SURVEY SITES

and vegetation types compared to those within Management Zones 6 - 8. Suitable locations for baseline surveys within Cudgen Nature Reserve (i.e. areas comprising the same PCTs/TVMS communities) are identified in FIGURE 19 and listed in TABLE 8 below.

**TABLE 8**  
**CUDGEN NATURE RESERVE BASELINE MONITORING SITES**

Baseline Survey Site	Vegetation Type	PCT	TVMS
CNR01	Littoral rainforest	751	101
CNR02	Dry coastal heathland to shrubland	663	501
CNR03	Wet coastal heathland to shrubland	1297	502
CNR04	Sedgeland/rushland	1911	701

### 8.2.3 Methodology

#### 8.2.3.1 Introduction

To assess if the project completion criteria have been met, vegetation assessments will be completed using plot-based vegetation surveys (transects) and photo point monitoring at the locations discussed above.

#### 8.2.3.2 Plot-Based Vegetation Surveys

Plot-based vegetation surveys (transects) will be undertaken at the monitoring locations shown on FIGURE 18 and FIGURE 19. Vegetation survey sites will be permanently marked (i.e. star pickets or wooden stakes) and the end positions identified on a sitemap using a hand-held Global Positioning System (GPS).

The plot-based vegetation surveys will be based on a 20 m × 20 m plot (or 400 m<sup>2</sup> equivalent for linear areas). Survey plots should be established around a central 50 m transect as follows:

- a) One (1) 400 m<sup>2</sup> plot (standard 20 m x 20 m) is used to assess all performance indicators as set out in TABLE 9 below.
- b) Five (5) 1 m<sup>2</sup> sub-plots can be added to the program for the first monitoring event to assess groundcover recruitment for the plot. A decision as to the utility of these plots can be made after the first or second monitoring events.

The assessor will assess the plot for the information contained in TABLE 9.

**TABLE 9**  
**VEGETATION SURVEY DATA TO BE COLLECTED**

Attribute	Survey Required
Native Canopy Cover	Native canopy cover will be measured via the 'line intercept method' along the 50 m transect. Key canopy species will be noted.
Weed Canopy Cover	Weed canopy cover will be measured via the 'line intercept method' along the 50 m transect. Individual canopy weed species should be assessed separately.

Attribute	Survey Required
Native Midstorey Cover	Estimate the % foliage cover of each native species within the midstorey across the 400 m <sup>2</sup> plot. Cover should be recorded in decimals if less than 1% (0.1, 0.2...), or whole numbers up to 5% (1, 2, 3...), or to the nearest 5% where greater than 5% cover (5, 10, 15, 20, 25...).
Weed Presence in the Midstorey	Estimate the % foliage cover of each weed species within the midstorey across the 400 m <sup>2</sup> plot. Cover should be recorded in decimals if less than 1% (0.1, 0.2...), or whole numbers up to 5% (1, 2, 3...), or to the nearest 5% where greater than 5% cover (5, 10, 15, 20, 25...).
Groundcover	Estimate percentage cover of native species vs. weeds within each of the five (5) 1 m <sup>2</sup> sub-plots. Cover should be recorded in decimals if less than 1% (0.1, 0.2...), or whole numbers up to 5% (1, 2, 3...), or to the nearest 5% where greater than 5% cover (5, 10, 15, 20, 25...). Identify each native and weed groundcover species.

The full species name (genus species) must be recorded for all native species, unless insufficient diagnostic plant material is present, in which case the genus name followed by a species number must be used. Comments should also be included for all attributes (TABLE 9) on any notable variations elsewhere in the relevant management polygon - e.g. weeds occurring in the management polygon that are not (or poorly) represented in the transect.

#### 8.2.3.3 Photo Point Monitoring

Photo-monitoring points will be completed as a means of demonstrating compliance or otherwise with performance criteria. Permanent photo stations are to be located at each monitoring location (FIGURE 18 and FIGURE 19). Where transects are to be established, photo points have been located on each transect. Where selected vegetation/habitat polygons are too small in size and/or are not covered by transects, photo point monitoring points will be identified, mapped and included in the baseline monitoring report.

Four (4) photos are to be taken from each photo point. Photos are to be taken to the north, south, east and west. Photos should be labelled with the:

- Transect code or photo point code;
- Direction of view; and
- Date and time.

Photos must be supplied in the Annual Monitoring Reports in a form of prints no smaller than 4" x 6" and must be colour.

#### 8.2.4 *Timing of Baseline Monitoring Visits*

Collection of baseline data will be completed prior to commencement of construction.

## 8.3 Bush Regeneration Team Monitoring

The Bush Regeneration Team will be gather baseline data at each weed treatment site prior to commencement of weed control to assist in documenting vegetation recovery in the long term. A baseline monitoring proforma is contained in **APPENDIX 7**.

The bush regeneration team will also keep detailed work sheets for all works completed within retained habitat areas (Management Zones 2 and 3), compensatory habitat areas (Management Zones 4 and 5) and other proposed revegetation/ regeneration areas (i.e. Management Zones 6 - 8), recording the following:

- All work completed each day;
- Site conditions;
- Chemicals used;
- Problems encountered; and
- Future works required.

A daily work sheet template is attached in **APPENDIX 8**. These records and general comments on progress will be provided to the Ecologist for consideration and inclusion in the annual vegetation monitoring reports (**SECTION 8.6.2**).

## 8.4 Monitoring Retained Vegetation

### *8.4.1 Background*

Ongoing vegetation monitoring will be completed by an Ecologist within retained habitat areas (Management Zones 2 and 3), in accordance with the following sections. In addition, in the event of a planned or unplanned bushfire occurring on the Kings Forest site, an additional vegetation monitoring event is to be completed in accordance with the following sections.

### *8.4.2 Monitoring Locations*

Ongoing vegetation monitoring within retained habitat areas (Management Zones 2 and 3) will utilise the same monitoring locations as the baseline monitoring as discussed in **SECTION 8.2** above.

In the event of a planned or unplanned bushfire on the Kings Forest site, an additional monitoring event is to be completed within the affected area at monitoring sites spaced no more than 100 m. Where possible, this should include any of the standard monitoring sites as shown in **FIGURE 18**.

### *8.4.3 Methodology*

Ongoing vegetation monitoring and additional bushfire monitoring events will utilise the same methodology (i.e. plot-based vegetation surveys and photo point monitoring) as discussed for the baseline monitoring above (**SECTION 8.2**).

#### 8.4.4 Timing of Monitoring Visits

Monitoring events should occur:

- To set up monitoring transects and quadrats, and to collect the first round of monitoring data after 1<sup>st</sup> event of secondary weeding;
- Six (6) monthly until the establishment period performance criteria are met; and
- Then annually during the maintenance period.

In the event of a planned or unplanned bushfire on the Kings Forest site an additional monitoring event will be completed three (3) to six (6) months after the bushfire to inform any additional maintenance and rehabilitation requirements.

#### 8.4.5 Performance Targets and Corrective Actions

TABLE 10 provides the performance indicators and targets for retained vegetation/habitat within Management Zones 2 and 3. Corrective actions are provided that are to be implemented if performance targets are not met.

TABLE 10  
PERFORMANCE TARGETS AND CORRECTIVE ACTIONS

Performance Indicator	Target - Establishment period <sup>1</sup>	Target - Maintenance period <sup>2</sup>	Corrective Actions
Natural recruitment of native species.	Evidence of natural recruitment of shrub and ground cover species.	Increasing natural recruitment of shrub and groundcover species.	Where natural recruitment fails to meet performance targets discussions with BCD and TSC shall be initiated by the proponent or their consultants to consider adjustments to the assisted regeneration strategy being used to improve natural recruitment.
All identified weeds controlled to an acceptable level within retained vegetation areas.	Foliage Projective Cover (FPC) (%) assessed using eye estimates or photo points reduced to <10% within first year.	Foliage Projective Cover (FPC) (%) assessed using eye estimates or photo points: <ul style="list-style-type: none"> <li>• reduced to &lt;10% within first year;</li> <li>• &lt;10% in second year;</li> <li>• &lt;5% in the third year and consecutive years.</li> </ul>	Weed control as necessary.

Performance Indicator	Target - Establishment period <sup>1</sup>	Target - Maintenance period <sup>2</sup>	Corrective Actions
Infrastructure (e.g. protection fencing, signage, erosion and sediment control devices) functional and well-maintained.	Relevant infrastructure maintained.	Relevant infrastructure in condition suitable for hand over to TSC.	Maintenance as necessary.
<p><b>Notes:</b></p> <p><sup>1</sup> “Establishment period” means the period during which initial environmental repair, restoration and monitoring works required by the relevant approved environmental management plan(s) are undertaken. The establishment period ends when the works meet the establishment period performance criteria, as defined by the relevant approved environmental management plans, to the satisfaction of the Secretary.</p> <p><sup>2</sup> “Maintenance period” means the period of environmental management and monitoring works commencing immediately after the end of the establishment period. Maintenance period works are to be carried out in accordance with the relevant performance criteria (as defined by the relevant approved environmental management plan) to the satisfaction of the Secretary.</p>			

## 8.5 Rehabilitation Monitoring

### 8.5.1 Background

Monitoring is crucial in ensuring the continuing success of the rehabilitation program, including topsoil re-use areas, and will be carried out for the duration of this plan. Monitoring in accordance with this VWMP will be completed within the following revegetation/regeneration areas of the Precincts 1 - 5 EMAs (FIGURE 12):

- Management Zone 6 - Heath regeneration/revegetation;
- Management Zone 7 - Littoral rainforest regeneration/revegetation; and
- Management Zone 8 - Wetland regeneration.

Details of the rehabilitation monitoring program in these Management Zones are provided in the following sections.

Monitoring will also be completed within areas of compensatory habitat within the Precincts 1 - 5 EMAs and the proposed East-West Corridor (FIGURE 12) as follows:

- Management Zone 4 - Compensatory koala habitat: monitored in accordance with Section 8.4 of the KPoM (JWA 2019); and
- Management Zone 5 - Compensatory WSF habitat: monitored in accordance with Section 8.5 of the WSFMP (JWA 2020a).

The above documents contain detailed monitoring programs respectively including monitoring methodologies, locations, timing of monitoring events, performance targets and corrective actions.

In addition, in the event of a planned or unplanned bushfire occurring on the Kings Forest site, an additional rehabilitation monitoring event is to be completed in accordance with the following sections.

### 8.5.2 Monitoring Locations

Ongoing rehabilitation monitoring within Management Zones 6 - 8 will occur in locations shown in FIGURE 18. Field sites have been selected to ensure representative sampling of all rehabilitation areas within Management Zones 6 - 8 and to ensure uniform and unbiased coverage.

In the event of a planned or unplanned bushfire on the Kings Forest site, an additional monitoring event is to be completed within the affected area at monitoring sites spaced no more than 100 m. Where possible, this should include any of the standard monitoring sites as shown in FIGURE 18.

### 8.5.3 Methodology

Ongoing vegetation monitoring will utilise the same methodology (i.e. plot-based vegetation surveys and photo point monitoring) as discussed for the baseline monitoring above (SECTION 8.2), however the assessor will assess the plot for a slightly expanded list of details/data contained in TABLE 11.

TABLE 11  
VEGETATION SURVEY DATA TO BE COLLECTED

Attribute	Survey Required
Seedling Survival	The first monitoring event will require a count of the total number of seedlings, individual species counts and a count of the number of dead or dying seedlings of each species. Subsequent monitoring events will only require counts of dead or dying seedlings and their species identification.
Native Canopy Cover	Native canopy cover will be measured via the 'line intercept method' along the 50 m transect. Key canopy species will be noted.
Weed Canopy Cover	Weed canopy cover will be measured via the 'line intercept method' along the 50 m transect. Individual canopy weed species should be assessed separately.
Native Midstorey Cover	Estimate the % foliage cover of each native species within the midstorey across the 400 m <sup>2</sup> plot. Cover should be recorded in decimals if less than 1% (0.1, 0.2...), or whole numbers up to 5% (1, 2, 3...), or to the nearest 5% where greater than 5% cover (5, 10, 15, 20, 25...).
Weed Presence in the Midstorey	Estimate the % foliage cover of each weed species within the midstorey across the 400 m <sup>2</sup> plot. Cover should be recorded in decimals if less than 1% (0.1, 0.2...), or whole numbers up to 5% (1, 2, 3...), or to the nearest 5% where greater than 5% cover (5, 10, 15, 20, 25...).

Attribute	Survey Required
Groundcover species	Estimate percentage cover of native species vs. weeds within each of the five (5) 1 m <sup>2</sup> sub-plots. Cover should be recorded in decimals if less than 1% (0.1, 0.2...), or whole numbers up to 5% (1, 2, 3...), or to the nearest 5% where greater than 5% cover (5, 10, 15, 20, 25...). Identify each native and weed groundcover species
Shrub and Groundcover Recruitment	Identify the numbers of native shrub and groundcover species recruiting within each of the five (5) 1 m <sup>2</sup> sub-plots. The identification of individual recruits may not be possible when they first appear. These should be recorded as unidentified until the next or subsequent monitoring events.

The full species name (genus species) must be recorded for all native species, unless insufficient diagnostic plant material is present, in which case the genus name followed by a species number must be used. Comments should also be included for all attributes (TABLE 11) on any notable variations elsewhere in the relevant management polygon - e.g. weeds occurring in the management polygon that are not (or poorly) represented in the transect.

#### 8.5.4 Timing of Monitoring Visits

Monitoring events should occur:

- To set up monitoring transects and quadrats, and to collect the first round of monitoring data after 1<sup>st</sup> event of secondary weeding;
- Six (6) monthly until the establishment period performance criteria are met; and
- Then annually during the maintenance period.

In the event of a planned or unplanned bushfire on the Kings Forest site an additional monitoring event will be completed three (3) to six (6) months after the bushfire to inform any additional maintenance and rehabilitation requirements.

#### 8.5.5 Performance Targets and Corrective Actions

TABLE 12 provides the performance indicators and targets for the proposed rehabilitation strategy within Management Zones 6 - 8. Corrective actions are provided that are to be implemented if performance targets are not met.

TABLE 12  
PERFORMANCE TARGETS AND CORRECTIVE ACTIONS

Performance Indicator	Target - Establishment period <sup>1</sup>	Target - Maintenance period <sup>2</sup>	Corrective Actions
Survival and continued growth of seedlings (i.e. planted stock).	>90% survival of plantings during all monitoring events.	>90% survival of plantings during all monitoring events	Irrigation if required. Additional planting if required.
Establishment of native ground cover within revegetation areas.	Planted ground covers substantially established <sup>3</sup> .	<ul style="list-style-type: none"> <li>• &gt;60% after three (3) years;</li> </ul>	Supplementary planting.

Performance Indicator	Target - Establishment period <sup>1</sup>	Target - Maintenance period <sup>2</sup>	Corrective Actions
		<ul style="list-style-type: none"> <li>&gt;80% after five (5) years;</li> </ul>	
Establishment of native canopy cover (where applicable) within revegetation areas.	Planted trees substantially established <sup>3</sup> .	<ul style="list-style-type: none"> <li>&gt;60% canopy cover of native tree species &gt;1.5 m in height after three (3) years;</li> <li>&gt;80% canopy cover of native tree species &gt;2.5m in height after five (5) years.</li> </ul>	Monitoring and maintenance period must be extended until the targets are met.
Natural recruitment of native species throughout rehabilitation areas.	Evidence of natural recruitment of shrub and ground cover species.	Increasing natural recruitment of shrub and groundcover species.	Where natural recruitment fails to meet performance targets discussions with BCD and TSC shall be initiated by the proponent or their consultants to consider adjustments to the assisted regeneration strategy being used to improve natural recruitment.
All identified weeds controlled to an acceptable level within retained vegetation areas.	Foliage Projective Cover (FPC) (%) assessed using eye estimates or photo points reduced to <10% within first year.	<p>Foliage Projective Cover (FPC) (%) assessed using eye estimates or photo points:</p> <ul style="list-style-type: none"> <li>reduced to &lt;10% within first year;</li> <li>&lt;10% in second year;</li> <li>&lt;5% in the third year and consecutive years.</li> </ul>	Weed control as necessary.
Infrastructure (e.g. protection fencing, signage, erosion and sediment control devices) functional and well-maintained.	Relevant infrastructure maintained.	Relevant infrastructure in condition suitable for hand over to TSC.	Maintenance as necessary.
<p><u>Notes:</u></p> <p><sup>1</sup> “Establishment period” means the period during which initial environmental repair, restoration and monitoring works required by the relevant approved environmental management plan(s) are undertaken. The establishment</p>			

Performance Indicator	Target - Establishment period <sup>1</sup>	Target - Maintenance period <sup>2</sup>	Corrective Actions
<p>period ends when the works meet the establishment period performance criteria, as defined by the relevant approved environmental management plans, to the satisfaction of the Secretary.</p> <p><sup>2</sup> “Maintenance period” means the period of environmental management and monitoring works commencing immediately after the end of the establishment period. Maintenance period works are to be carried out in accordance with the relevant performance criteria (as defined by the relevant approved environmental management plan) to the satisfaction of the Secretary.</p> <p><sup>3</sup> “Substantial establishment” of the koala habitat plantings means “the plantings have progressed beyond the need for intensive maintenance e.g. weed control, watering etc. and are clearly established by way of persisting through a recognised growth period and a suitably qualified horticultural/environmental specialist has provided a short report confirming that the plantings are established.”</p>			

## 8.6 Reporting

### 8.6.1 Baseline Vegetation Monitoring Report

Subsequent to the completion of baseline vegetation monitoring, a report will be prepared outlining the results. The report will be provided to the Commonwealth DoE, NSW DPI&E, NSW BCD and TSC and form the baseline for future monitoring. The Baseline Monitoring Report will be available on the JWA website for twelve (12) months ([www.jwaec.com.au/](http://www.jwaec.com.au/)).

### 8.6.2 Annual Vegetation Monitoring Report

An Annual Vegetation Monitoring Report will be prepared which discusses the results of the monitoring of retained vegetation and rehabilitation areas against the Monitoring Performance Criteria identified in SECTION 8.4.5 and SECTION 8.5.5 respectively. The information provided in the report should include, but not necessarily be limited to:

- Works undertaken (i.e. A summary of bush regenerators daily reports);
- A presentation of the results of the particular monitoring event/s;
- A detailed discussion of the results of each particular monitoring event including additional monitoring completed after any planned or unplanned bushfire;
- A detailed comparison with the baseline parameters and with previous survey data, as appropriate;
- A statement of compliance with the Monitoring Performance Criteria identified in SECTION 8.4.5 and SECTION 8.5.5;
- Any problems since the previous inspection (death of a significant number of seedlings, broken fences etc.) and what effects these issues have had on the regeneration area;
- Success or failure of measures implemented to rectify previously identified problems;
- Measures to be taken to rectify new problems; and
- Adaptive management log to ensure that the management plan remains relevant and effective (SECTION 6.14.4).

Each Annual Vegetation Monitoring Report will be submitted to NSW DPI&E, NSW BCD and TSC within two (2) months of completion of the relevant monitoring. The Annual Vegetation

Monitoring Report will be available on the JWA website for twelve (12) months ([www.jwaec.com.au/](http://www.jwaec.com.au/)).

## 9 IMPLEMENTATION SCHEDULES

### 9.1 Introduction

Specific management actions discussed in SECTION 6 will be triggered and completed within Precincts 1 - 5 and associated EMAs, and the proposed East-West Corridor on a pre-construction, construction and operational phase basis. The implementation schedules provided in TABLES 13 - 15 below summarise all pre-construction, construction and operational phase management strategies and identify the associated management actions, timing, responsibilities and performance measures.

In accordance with Project Approval (MP08\_0194) Condition 72, evidence of commencement of implementation of this VWMP shall be provided to the Secretary prior to commencement of bulk earthworks.

Performance indicators and targets for retained vegetation and the proposed rehabilitation strategy to be achieved during the 'establishment period' and 'maintenance period' of the project (as defined within the Project approval MP08\_0194) are contained in SECTION 8.4.5 and SECTION 8.5.5. Corrective actions are also provided that are to be implemented if performance targets are not met.

### 9.2 Development Phases

Management actions outlined in this VWMP will be implemented in three (3) phases:

- **Pre-construction Phase** - The pre-construction phase of the development refers to all preliminary works required to be completed prior to commencement of construction e.g. preliminary survey work, baseline monitoring and commencement of compensatory habitat rehabilitation works.
- **Construction Phase** - The construction phase of the development refers to works completed to construct the development and includes clearing vegetation, bulk earthworks and the construction of infrastructure.
- **Operational Phase** - The operational phase of the development will commence postconstruction and after registration of the plan/s of subdivision for each precinct.

Commencement of construction is defined under Concept Plan Approval Condition B7 and Major Project Approval A13 as any physical works including clearing vegetation, the use of heavy duty equipment for the purpose of breaking ground for bulk earthworks, or infrastructure for the proposed project.

TABLES 13 - 15 detail the specific management actions that will be implemented within each development precinct during the pre-construction phase, construction phase and operational phases respectively.

### 9.3 Roles and Responsibilities

The successful implementation of this VWMP requires a number of key personnel to complete various roles. As many of the contractors for the project are yet to be appointed, these will be specified and list of key contacts for the project contained in revised versions of the VWMP (in accordance with Conditions B1 and C2 of the Concept Plan Approval 06\_0318, MOD 6). A summary of key roles/personnel responsible for the management strategies identified in TABLES 13 - 15 below includes:

#### Proponent

Project 28 Pty Ltd is the Proponent for the works as the approval holder.

#### Construction/Site Manager

The Construction/Site Manager (to be appointed) is a representative of the project team (typically the project engineer) and is responsible for coordinating the project consultants and construction contractor.

#### Principal Contractor

The Principal contractor (to be appointed) is responsible for the management of all activities involved in the construction phase of the development.

#### Site Supervisor

The Site Supervisor is a representative of the Principal Contractor (to be appointed) and responsible for overseeing all pre-clearing, clearing and construction activities are undertaken in accordance with this VWMP and subsequent environmental management documentation.

#### Ecologist

For the purposes of this VWMP means a qualified ecologist with appropriate training and at least five (5) years of experience in undertaking flora and fauna surveys.

#### Fauna Spotter Catcher

For the purposes of this VWMP means a suitably qualified ecologist/fauna handler agreed to by the Department. It is noted that the Fauna Spotter Catcher must hold a relevant scientific license and ethics approvals and a copy of these permits along with their contact details will be passed on to the Site Supervisor. The engaged Fauna Spotter Catcher will be responsible for the management/relocation of native fauna during any clearing activities.

#### Bush Regeneration Company

For the purposes of this VWMP means a suitably qualified Bush Regeneration Company that has demonstrable experience in the rehabilitation or revegetation of native vegetation communities in the Tweed region. It is noted that the Bush Regeneration Company must hold the necessary license and approvals. The engaged Bush Regeneration Company will be responsible for rehabilitation and weed management works on the site.

## 9.4 Implementation Table - Pre-construction Phase

**TABLE 13**  
**VEGETATION MANAGEMENT STRATEGIES - PRE-CONSTRUCTION PHASE**

Management Strategy	Management Zone	Management Action	Responsibility	Performance Measure
Environmental Officer(s) / Community Liaison Officer	Zones 1 - 8	Appointment of Environmental Officer(s) / Community Liaison Officer in accordance with MP08_0194 Condition 70.	Proponent	Environmental Officer(s) / Community Liaison Officer appointed as detailed in SECTION 6.13 and Section 7.13.3 of the Kings Forest KPoM (JWA 2019) prior to commencement of bulk earthworks*.
Baseline vegetation surveys and report	Zones 2 - 8	Baseline vegetation monitoring program to be completed within Precincts 1 - 5 in accordance with MP08_0194 Condition 37.	Qualified Ecologist	Baseline vegetation surveys and reports completed in accordance with SECTION 8.2. Reports provided to relevant government agencies in accordance with SECTION 8.6.
Baseline weed survey	Zones 2 - 8	Baseline weed surveys completed.	Suitably Qualified Bush Regeneration Company	Baseline monitoring data collected at each weed treatment area prior to the commencement of weed control in accordance with SECTION 8.3.
Education of construction personnel	Zone 1	A construction personnel induction program shall be developed and implemented by the Proponent prior to commencement of construction.	Principal Contractor / Site Supervisor	A construction personnel induction program development and implemented and an annual report prepared detailing the induction procedure and personnel inducted in accordance with SECTION 6.2 and Section 7.2.1 of the Kings Forest KPoM (JWA 2019).
Survey plans and permanent marking of dedication areas	Zones 2 - 8	Mark the boundaries of proposed/future dedication areas as required by MP08_0194 Condition 3.	Registered Surveyor	Report prepared prior to commencement of construction* containing survey plans showing the boundaries of the proposed dedication areas in accordance with SECTION 6.10 and Section 7.10 of the Kings Forest KPoM (JWA 2019). Permanent pegs placed in the ground. Survey plans lodged with the NSW DPI&E.
Weed control	Zones 2 - 8	Weeds controlled as required.	Suitably Qualified Bush Regeneration Company	All weeds controlled in accordance with SECTION 6.8.
	Within adjacent areas of Cudgen Nature Reserve	Targeted weed control works as required: <ul style="list-style-type: none"> <li>Control of immature Pines up to 100 m into adjacent Cudgen Nature Reserve; and</li> <li>Control of all other weeds up to 20 m into adjacent Cudgen Nature Reserve.</li> </ul>	Suitably Qualified Bush Regeneration Company	All weeds controlled as required within adjacent areas of the Cudgen Nature Reserve in accordance with the SECTION 6.8.
Management of retained vegetation/habitat	Zones 2 - 3	Areas of retained vegetation to be clearly identified in the field and marked as required.	Suitably Qualified Bush Regeneration Company	Each retained vegetation area will be clearly identified on site with marking pegs prior to commencement of construction in each Precinct in accordance with SECTION 6.7 and Section 7.5 of the Kings Forest KPoM (JWA 2019).
		Retained vegetation/habitat managed as required by MP08_0194 Conditions 40 and 41.	Suitably Qualified Bush Regeneration Company	Retained vegetation within the Precincts 1 - 5 EMAs will be protected and maintained in accordance with SECTION 6.7 and the following documents where applicable: <ul style="list-style-type: none"> <li>Kings Forest KPoM (JWA 2019) - Section 7.5; and</li> <li>Kings Forest WSFMP (JWA 2020a) - Section 7.7.</li> </ul>

Management Strategy	Management Zone	Management Action	Responsibility	Performance Measure
Rehabilitation and compensatory habitat works	Zones 4 - 8	Rehabilitation areas to be clearly identified in the field and marked as required.	Suitably Qualified Bush Regeneration Company	Each rehabilitation area will be clearly identified on site with marking pegs prior to commencement of construction in each Precinct in accordance with SECTION 6.9 and Appendix 8 of the Kings Forest KPoM (JWA 2019).
		Rehabilitation works commenced as required by MP08_0194 Condition 40 and 41.	Suitably Qualified Bush Regeneration Company	All regeneration/revegetation works (including compensatory koala and WSF habitat creation) to be commenced in accordance with SECTION 6.9 and the following documents where appropriate: <ul style="list-style-type: none"> <li>• Kings Forest KPoM (JWA 2019) - Section 7.6; and</li> <li>• Kings Forest WSFMP (JWA 2020a) - Section 7.8.</li> </ul>
Fire management	Zones 1 - 8	Reduction of fire risk.	Proponent (until ownership is transferred)	Fire risk to be managed in accordance with the approved Bushfire Management Plan (BushfireSafe 2020) and associated Kings Forest Koala Fire Management Plan (Wildsite 2020) (SECTION 6.11).
Payment of bond and/or bank guarantee	Zones 2 - 8	In accordance with MP08_0194 Condition 50, a bond for the implementation of environmental management, with the exception of koala compensatory habitat, is to be lodged with TSC.	Proponent	Prior to commencement of bulk earth works for each precinct, and every two (2) years thereafter, a cash bond or bank guarantee shall be lodged with TSC to ensure that the relevant environmental management plans for the associated Potential Council Land (PCL) are implemented as detailed in SECTION 6.10 and Section 7.6.7 the Kings Forest KPoM (JWA 2019).
Adaptive management	All Zones	Adaptive Management strategies implemented as required.	Proponent	Adaptive Management Log detailing issues raised and any changes made to this management plan to be updated as monthly and included in the Annual Vegetation Monitoring Report and published on the project website in accordance with SECTION 6.14.

**Notes:**

\* “Commencement of construction” for the purpose of this project, Condition B7 (Concept Plan Approval) and Condition A13 of the Major Project Approval, is taken to mean any physical works including clearing vegetation, the use of heavy duty equipment for the purpose of breaking ground for bulk earthworks, or infrastructure for the proposed project.

## 9.5 Implementation Table - Construction Phase

TABLE 14  
VEGETATION MANAGEMENT STRATEGIES - CONSTRUCTION PHASE

Management Strategy	Management Zone	Management Action	Responsibility	Performance Measure
Environmental Officer(s) / Community Liaison Officer	Zones 1 - 8	Environmental Officer(s) / Community Liaison Officer to oversee environmental compliance until all conditions have been satisfied as required by MP08_0194 Condition 70.	Environmental Officer(s) / Community Liaison Officer	Duties of the Environmental Officer(s) / Community Liaison Officer completed in accordance with SECTION 6.13 and Section 7.13.3 of the Kings Forest KPoM (JWA 2019).
Exclusion fencing and other infrastructure	Zones 1 - 8	Fauna exclusion fencing and other infrastructure to be installed and maintained in accordance with MP08_0194 Conditions 46, 64, 121 and 148 and EPBC_2012/6328 Conditions 2, 3, and 4.	Principal Contractor / Site Supervisor	All fencing (temporary and permanent) and associated infrastructure to be constructed prior to commencement of bulk earthworks* in accordance with SECTION 6.5 and Section 7.3.2 of the Kings Forest KPoM (JWA 2019).  Permanent fencing will replace temporary fencing where applicable at the end of the construction phase of the development of each applicable Precinct in accordance with SECTION 6.5 and Section 7.3.2 of the Kings Forest KPoM (JWA 2019).
Construction phase management measures	Zones 1 - 8	All areas of vegetation to be cleared within each Precinct of the development will be clearly identified on construction plans and in the field prior to the commencement of construction.	Principal Contractor / Site Supervisor / Environmental Officer	All areas of vegetation to be cleared within each Precinct of the development will be clearly identified on construction plans and in the field prior to the commencement of construction in accordance with SECTION 6.3.
		All activities in an area adjacent to any retained tree or area are to be carried out in such a manner as to minimise any damage to trees.	Principal Contractor / Site Supervisor / Environmental Officer	No trees to be retained are damaged by construction works in accordance with SECTION 6.3.
		No machinery, rubbish or spoil will be stored within EMAs during the construction phase of the development.	Construction Manager	No machinery, rubbish or spoil stored within EMAs in accordance with SECTION 6.3.
		No soil disturbance within areas of retained vegetation.	Principal Contractor / Site Supervisor / Environmental Officer	Soil is not disturbed within areas of retained vegetation in accordance with SECTION 6.3.
		The establishment and propagation of weed species is prevented.	Principal Contractor / Site Supervisor / Environmental Officer	No new weed infestations occur during the construction phase in accordance with SECTION 6.3.
	Zone 1	Sediment and erosion control devices installed prior to commencement of earthworks and maintained throughout construction phase.	Construction Manager	All erosion and sediment control devices installed and maintained in accordance with the Erosion and Sediment Control Plan (G&S 2020d) (SECTION 6.3).
	Zone 1	A designated shakedown/wash area will be established for personnel, equipment and vehicles. Designated shakedown / wash area will not be located in or immediately adjacent to the EMAs.	Construction Manager	All shakedown/wash areas installed prior to commencement of earthworks in accordance with the Erosion and Sediment Control Plan (G&S 2020d) (SECTION 6.8.3).
	Zone 1	Pre-clearing fauna trapping program as required.	Qualified Ecologist	Prior to commencement of any vegetation clearing works a pre-clearing site inspection will be completed to identify and mark habitat trees or other habitat features within the clearing area in accordance with SECTION 6.4.1 and Section 7.2.2 of the Precincts 1 - 5 TSMP (JWA 2020c).

Management Strategy	Management Zone	Management Action	Responsibility	Performance Measure
				Subsequent to the site inspection, and immediately prior to commencement of site clearing works, a pre-clearing trapping program will be completed within any areas of relatively intact vegetation to be cleared in accordance with SECTION 6.4.1 and Section 7.2.2 of the Precincts 1 - 5 TSMP (JWA 2020c). Any animals captured to be relocated to suitable areas of retained habitat.
		Appointment of fauna spotter catcher as required by MP08_0194 Condition 96.	Proponent	The proponent will appoint a suitably qualified fauna spotter catcher to conduct a pre-clearing site inspections and to be present during all clearing activities to rescue and relocate any native fauna species as necessary in accordance with SECTION 6.4.2, Section 7.2.2 of the Kings Forest KPoM (JWA 2019) and Section 7.2.3 of the Kings Forest WSFMP (JWA 2020a).
		A fauna spotter catcher will be present during all vegetation clearing works in accordance with MP08_0194 Condition 96.	Fauna Spotter Catcher	A suitably qualified fauna spotter catcher is to be present during all clearing activities to rescue and relocate any native fauna species as necessary in accordance with SECTION 6.4.2, Section 7.2.2 of the Kings Forest KPoM (JWA 2019) and Section 7.2.3 of the Kings Forest WSFMP (JWA 2020a).
		Pre-clearing inspections as required by EPBC_2012/6328 Condition 18.	Fauna Spotter Catcher	Pre-clearing site inspections will be completed no more than one day prior to commencement of bulk earth moving activities within each precinct in accordance with SECTION 6.4.2, Section 7.2.2 of the Kings Forest KPoM (JWA 2019) and Section 7.2.3 of the Kings Forest WSFMP (JWA 2020a).
		Construction phase fauna management procedures to be implemented as required.	Principal Contractor / Site Supervisor / Fauna Spotter Catcher	Construction phase fauna management procedures are to be implemented in accordance with SECTION 6.4.
		A post-clearing spotter catcher report to be prepared.	Fauna Spotter Catcher	A post-clearing spotter catcher report is submitted to Council (SECTION 6.4.5).
		Fauna Incident Reporting Protocols as required by MP08_0194 Condition 76.	Principal Contractor	Any koala or WSF observation or incident within the development footprint or buffers during the construction phase will result in an observation/incident report in accordance with SECTION 6.4.6, Section 7.2.6 of the Kings Forest KPoM (JWA 2019) and Section 7.2.5 of the Kings Forest WSFMP (JWA 2020a).
Access management	Zones 1 - 9	Gates installed and secured where relevant.	Construction Manager	Where the length of fencing (permanent or temporary) in buffer zones is greater than 100 m, a gate will be provided to allow access for routine maintenance, rehabilitation work and monitoring in accordance with SECTION 6.5.2. No locks on the gates will be required for the duration of the site development, however secure fastening structures must be provided for each gate.
Re-use of topsoil	Zones 1 and 6	Topsoil recipient areas prepared for topsoil translocation (Seedbank translocation program - MP06_0318 - Condition C2).	Construction Manager/ Suitably Qualified Bush Regeneration Company	At the commencement of bulk earthworks, topsoil recipient areas will be ripped and prepared for topsoil translocation in accordance with SECTION 6.6.
		Topsoil within donor sites to be removed and stockpiled (Seedbank translocation program - MP06_0318 - Condition C2).	Construction Manager	Topsoil from donor sites to be stripped to a depth of 40 - 50 mm in accordance with SECTION 6.6. Stockpiles of topsoil will be created no more than 1 m thick, protected by silt fencing and covered with weed matting.
		Logs and large branches collected from donor sites and placed within recipient areas (Seedbank translocation program - MP06_0318 - Condition C2).	Suitably Qualified Bush Regeneration Company	Logs and large branches to be collected from donor sites and hand rolled in to place within recipient areas to provide habitat in accordance with SECTION 6.6.
		All stockpiled topsoil spread within recipient areas (Seedbank translocation program - MP06_0318 - Condition C2).	Suitably Qualified Bush Regeneration Company	Topsoil to be spread within designated recipient areas of at a maximum depth of 100 mm in accordance with SECTION 6.6.
Weed control	Zones 2 - 8	Weeds controlled as required.	Suitably Qualified Bush Regeneration Company	All weeds controlled as required within the Precincts 1 - 5 EMAs in accordance with the SECTION 6.8.

Management Strategy	Management Zone	Management Action	Responsibility	Performance Measure
	Within adjacent areas of Cudgen Nature Reserve	Targeted weed control works as required: <ul style="list-style-type: none"> <li>Control of immature Pines up to 100 m into adjacent Cudgen Nature Reserve; and</li> <li>Control of all other weeds up to 20 m into adjacent Cudgen Nature Reserve.</li> </ul>	Suitably Qualified Bush Regeneration Company	All weeds controlled as required within adjacent areas of the Cudgen Nature Reserve in accordance with the SECTION 6.8.
Regeneration and revegetation	Zones 4 - 8	Regeneration and revegetation works carried out as required.	Suitably Qualified Bush Regeneration Company	All regeneration/revegetation works to be carried out in accordance with SECTION 6.9 and the following documents where appropriate: <ul style="list-style-type: none"> <li>Kings Forest KPoM (JWA 2019) - Section 7.6; and</li> <li>Kings Forest WSFMP (JWA 2020a) - Section 7.8.</li> </ul>
Maintenance of retained vegetation	Zones 2 - 3	Retained vegetation/habitat managed as required.	Suitably Qualified Bush Regeneration Company	Retained vegetation protected and maintained in accordance with SECTION 6.7 and the following documents where applicable: <ul style="list-style-type: none"> <li>Kings Forest KPoM (JWA 2019) - Section 7.5; and</li> <li>Kings Forest WSFMP (JWA 2020a) - Section 7.7.</li> </ul>
Retained vegetation monitoring	Zones 2 - 3	Retained vegetation monitoring program to be completed in accordance with MP08_0194 Condition 37.	Qualified Ecologist	Ongoing retained vegetation monitoring program and reporting completed in accordance with SECTION 8.4. Reports provided to relevant government agencies in accordance with SECTION 8.6.
Rehabilitation monitoring	Zones 4 - 8	Rehabilitation monitoring program to be completed in accordance with MP08_0194 Condition 37.	Qualified Ecologist	Ongoing rehabilitation monitoring program and reporting completed in accordance with SECTION 8.5. Reports provided to relevant government agencies in accordance with SECTION 8.6.
Monitoring after bushfire	Zones 2 - 8	Additional monitoring completed after bushfires in accordance with MP08_0194 Condition 37.	Qualified Ecologist	Additional monitoring event completed after any planned or unplanned bushfire in accordance with SECTION 8.4 and SECTION 8.5.
Fire management	Zones 1 - 8	Reduction of fire risk.	Proponent (until ownership is transferred)	Fire risk to be managed in accordance with the approved Bushfire Management Plan (BushfireSafe 2020) and associated Kings Forest Koala Fire Management Plan (Wildsite 2020) (SECTION 6.11).
Payment of bond and/or bank guarantee	Zones 2 - 8	In accordance with MP08_0194 Condition 50, a bond for the implementation of environmental management, with the exception of koala compensatory habitat, is to be lodged with TSC.	Proponent	Prior to commencement of bulk earthworks for each precinct, and every two (2) years thereafter, a cash bond or bank guarantee shall be lodged with TSC to ensure that the relevant environmental management plans for the associated Potential Council Land (PCL) are implemented as detailed in SECTION 6.12 and Section 7.6.7 the Kings Forest KPoM (JWA 2019).
Adaptive management	All Zones	Adaptive Management strategies implemented as required.	Proponent	Adaptive Management Log detailing issues raised and any changes made to this management plan to be updated as monthly and included in the Annual Vegetation Monitoring Report and published on the project website in accordance with SECTION 6.14.

**Notes:**

\* “Commencement of construction” for the purpose of this project, Condition B7 (Concept Plan Approval) and Condition A13 of the Major Project Approval, is taken to mean any physical works including clearing vegetation, the use of heavy duty equipment for the purpose of breaking ground for bulk earthworks, or infrastructure for the proposed project.

## 9.6 Implementation Table - Operational Phase

TABLE 15  
VEGETATION MANAGEMENT STRATEGIES - OPERATIONAL PHASE

Management Strategy	Management Zone	Management Action	Responsibility	Performance Measure
Environmental Officer(s) / Community Liaison Officer	Zones 1 - 8	Environmental Officer(s)/ Community Liaison Officer to oversee environmental compliance until all conditions have been satisfied as required by MP08_0194 Condition 70.	Environmental Officer(s) / Community Liaison Officer	Duties of the Environmental Officer(s) / Community Liaison Officer completed in accordance with SECTION 6.13 and Section 7.13.3 of the Kings Forest KPoM (JWA 2019).
Exclusion fencing and other infrastructure	Zones 1 - 8	Fauna exclusion fencing and other infrastructure to be maintained in accordance with MP08_0194 Conditions 46, 64, 121 and 148 and EPBC_2012/6328 Conditions 2, 3, and 4.	Principal Contractor / Site Supervisor	All fencing and associated infrastructure to be maintained in accordance with SECTION 6.5 and Section 7.3.2 of the Kings Forest KPoM (JWA 2019).
Access management	Zones 1 - 8	At the completion of the monitoring program locks will be provided to all gates. Keys will be held by Tweed Shire Council and BCD (NPWS) where appropriate.	Construction Manager	All gates installed and maintained in accordance with SECTION 6.5.2.
Weed control	Zones 2 - 8	Weeds controlled as required.	Suitably Qualified Bush Regeneration Company	All weeds controlled as required within the Precincts 1 - 5 EMAs in accordance with the SECTION 6.8.
	Within adjacent areas of Cudgen Nature Reserve	Targeted weed control works as required: <ul style="list-style-type: none"> <li>Control of immature Pines up to 100 m into adjacent Cudgen Nature Reserve; and</li> <li>Control of all other weeds up to 20 m into adjacent Cudgen Nature Reserve.</li> </ul>	Suitably Qualified Bush Regeneration Company	All weeds controlled as required within adjacent areas of the Cudgen Nature Reserve in accordance with the SECTION 6.8.
Regeneration and revegetation	Zones 4 - 8	Regeneration and revegetation works completed as required.	Suitably Qualified Bush Regeneration Company	All regeneration/revegetation works to be completed in accordance with SECTION 6.9 and the following documents where appropriate: <ul style="list-style-type: none"> <li>Kings Forest KPoM (JWA 2019) - Section 7.6; and</li> <li>Kings Forest WSFMP (JWA 2020a) - Section 7.8.</li> </ul>
Maintenance of retained vegetation	Zones 2 - 3	Retained vegetation/habitat managed as required.	Suitably Qualified Bush Regeneration Company	Retained vegetation protected and maintained in accordance with SECTION 6.7 and the following documents where applicable: <ul style="list-style-type: none"> <li>Kings Forest KPoM (JWA 2019) - Section 7.5; and</li> <li>Kings Forest WSFMP (JWA 2020a) - Section 7.7.</li> </ul>
Retained vegetation monitoring	Zones 2 - 3	Retained vegetation monitoring program to be completed in accordance with MP08_0194 Condition 37.	Qualified Ecologist	Ongoing retained vegetation monitoring program and reporting completed in accordance with SECTION 8.4. Reports provided to relevant government agencies in accordance with SECTION 8.6.
Rehabilitation monitoring	Zones 4 - 8	Rehabilitation monitoring program to be completed in accordance with MP08_0194 Condition 37.	Qualified Ecologist	Ongoing rehabilitation monitoring program and reporting completed in accordance with SECTION 8.5. Reports provided to relevant government agencies in accordance with SECTION 8.6.
Monitoring after bushfire	Zones 2 - 8	Additional monitoring completed after bushfires in accordance with MP08_0194 Condition 37.	Qualified Ecologist	Additional monitoring event completed after any planned or unplanned bushfire in accordance with SECTION 8.4 and SECTION 8.5.
Fire management	Zones 1 - 8	Reduction of fire risk.	Proponent (until ownership is transferred)	Fire risk to be managed in accordance with the approved Bushfire Management Plan (BushfireSafe 2020) and associated Kings Forest Koala Fire Management Plan (Wildsite 2020) (SECTION 6.11).

Management Strategy	Management Zone	Management Action	Responsibility	Performance Measure
Payment of bond and/or bank guarantee	Zones 2 - 8	In accordance with MP08_0194 Condition 50, a bond for the implementation of environmental management, with the exception of koala compensatory habitat, is to be lodged with TSC.	Proponent	Prior to commencement of bulk earthworks for each precinct, and every two (2) years thereafter, a cash bond or bank guarantee shall be lodged with TSC to ensure that the relevant environmental management plans for the associated Potential Council Land (PCL) are implemented as detailed in SECTION 6.12 and Section 7.6.7 the Kings Forest KPoM (JWA 2019).
Adaptive management	All Zones	Adaptive Management strategies implemented as required.	Proponent	Adaptive Management Log detailing issues raised and any changes made to this management plan to be updated as monthly and included in the Annual Vegetation Monitoring Report and published on the project website in accordance with SECTION 6.14.

## 10 INDICATIVE COSTINGS

TABLE 16 contains an indicative costing for the implementation of mitigation measures within Precincts 1 - 5.

It is noted that additional costings for management actions outside the scope of this VWMP (i.e. associated with compensatory koala and WSF habitat, feral animal management, bushfire management etc.) are provided in the relevant management plans.

**TABLE 16  
INDICATIVE COSTINGS**

Management Action/Item	Cost (\$) * Establishment Phase	Cost (\$) * Maintenance Phase
Construction phase management measures	Subject to arrangements with Principal Contractor	N/A
Baseline vegetation surveys and report	\$25,000	N/A
Pre-clearing fauna trapping and fauna spotter catcher	\$35,000	N/A
Targeted weed control within adjacent Cudgen Nature Reserve (26.25 ha @ \$2,500/hectare)	\$65,625	\$65,625/year
Management of Retained Vegetation/Habitat (82.27 ha @ \$2,500/hectare)	\$205,675/year	
Rehabilitation and Compensatory Habitat Works <sup>#^</sup> - includes seedlings, fertiliser, watering and weeding until sustainable (2.62 ha @ \$15,000/hectare)	\$39,300	N/A
Maintenance of Rehabilitation and Compensatory Habitat areas <sup>#^</sup> (2.62 ha @ \$2,500/hectare)	N/A	\$6,550/year
Monitoring and Reporting	\$50,000/year	
Feral animal management	Consult approved Kings Forest FAMP (JWA 2020e)	
Bushfire management	Consult approved Kings Forest Bushfire Management Plan	
* Proposed to be funded from the proponents ongoing cash flow during the development		
<sup>#</sup> excluding koala - refer to KPOM (JWA 2019)		
<sup>^</sup> excluding WSF - refer to WSFMP (JWA 2020a)		

## REFERENCES

Bellairs S.M. and Bell D.T. (1993) Seed stores for restoration of species-rich shrubland vegetation following mining in Western Australia. *Restoration Ecology* 1:231-240.

Berg R.Y. (1975) Myrmecochorous plants in Australia and their dispersal by ants. *Australian Journal of Botany* 23:475-508.

BushfireSafe (2020) *Bushfire Management Plan for Proposed Residential/Commercial Development Kings Forest Stage 1*. Report prepared for Project 28 Pty Ltd.

Callaghan J., de Jong C. and Mitchell D. (2005) *Kings Forest Ecological Assessment*. Report prepared for Tweed Shire Council by the Australian Koala Foundation.

Gilbert and Sutherland (G&S) (2020a) *Summary of Management Plans*. Kings Forest New South Wales. Report prepared for Project 28 Pty Ltd.

Gilbert and Sutherland (G&S) (2020b) *Overall Water Management Plan, Kings Forest New South Wales*. Report prepared for Project 28.

Gilbert and Sutherland (G&S) (2020c) *Kings Forest Drainage Maintenance Management Plan*. Report prepared for Project 28 by Gilbert and Sutherland.

Gilbert and Sutherland (G&S) (2020d) *Erosion and Sediment Control Plan Kings Forest New South Wales*. Report prepared for Project 28.

JWA (2012) *Kings Forest Stage 1 Project Application: Precinct 1 and 5 Vegetation Management Plan*. Report prepared for Project 28 Pty Ltd.

JWA (2019) *Koala Plan of Management, Kings Forest (Volume 1 and 2)*. Report prepared for Project 28 Pty Ltd.

JWA (2020a) *Wallum Sedge Frog Management Plan, Kings Forest*. Report prepared for Project 28 Pty Ltd.

JWA (2020b) *Kings Forest Precincts 1 - 5 Buffer Management Plan*. Report prepared for Project 28 Pty Ltd.

JWA (2020c) *Kings Forest Precincts 1 - 5 Threatened Species Management Plan*. Report prepared for Project 28 Pty Ltd.

JWA (2020d) *Kings Forest Flora and Fauna Monitoring Report*. Report prepared for Project 28 Pty Ltd.

JWA (2020e) *Kings Forest Feral Animal Management Plan*. Report prepared for Project 28 Pty Ltd.

Kingston M.B., Turnbull J.W. and Hall P.W. (2004) *Tweed Vegetation Management Strategy. Volumes 1, 2 and 3 - Strategy Plan*. Report prepared for Tweed Shire Council by Ecograph.

Koch J.M., Ward S.C., Grant C.D. and Ainsworth G.L. (1996) Effects of bauxite mine restoration operations on topsoil seed reserves in the jarrah forest of Western Australia. *Restoration Ecology* 4:368-376.

LandPartners (2009) *Revised Vegetation Management Plan, Kings Forest*. Report prepared for Project 28 Pty Ltd.

Mahesh M.Q., Upadhyaya M.K. and Turkington R. (1996) Dynamics of seed-bank and survivorship of meadow salsify (*Tragopogon pratensis*) populations. *Weed Science* 44:100-108.

Mortons Urban Solutions (MUS) (2020) *Kings Forest Construction Environmental Management Plan*. Report prepared for Project 28 Pty Ltd.

Phillips S., Hopkins M. and Shelton M. (2011) *Tweed Coast Koala Habitat Study*. Report to Tweed Shire Council. Biolink Ecological Consultants.

Putwain P.D. and Gillham D.A. (1990) The significance of the dormant viable seedbank in the restoration of heathlands. *Biological Conservation* 52:1-16.

Rokich D.P., Dixon K.W., Sivasithamparam K. and Meney K.A. (2000), Topsoil Handling and Storage Effects on Woodland Restoration in Western Australia. *Restoration Ecology* 8:196-208.

Skull S. (1995) *Plants of the Melaleuca woodlands*. James Cook University of North Queensland, Townsville.

Skull S.D. (1998) *The ecology of tropical lowland plant communities with particular reference to habitat fragmentation and Melaleuca viridiflora Sol. ex Gaertn. dominated woodlands*. PhD thesis, James Cook University of North Queensland, Townsville.

Temple J.M. and Bungey D. (1980) *Revegetation: methods and Management*. State Pollution Control Commission, NSW.

Terrestria (2014) *Pre-clearing Mapping of Vegetation of Kings Forest Site, Depot Road, Cudgen*. Report prepared for JWA Pty Ltd.

Thom R.M. (1997) System-development matrix for adaptive management of coastal ecosystem restoration projects. *Ecological Engineering* 8:219-232.

Ward S.C., Koch J.M. and Ainsworth G.L. (1996) The effect of timing of rehabilitation procedures on the establishment of a jarrah forest after bauxite mining. *Restoration Ecology* 4:19-24.

Warren J. (2000) *Species Impact Statement for the Proposed Kings Forest Development*. Report prepared for Narui Gold Coast by James Warren and Associates Pty Ltd.

Wildsite Ecological Services (2020) *Kings Forest Koala Fire Management Plan*. Report prepared for Project 28 Pty Ltd by Wildsite Ecological Services.

## APPENDIX 1 - COMPLIANCE WITH RELEVANT APPROVAL CONDITIONS

CONDITION	SECTION OF VWMP
<p><b><i>Concept Plan Approval - Condition C2</i></b></p> <p><i>Vegetation Management Plan</i></p> <p><i>“Each Vegetation Management Plan update is to provide details on:</i></p> <ol style="list-style-type: none"> <li><i>1) the short, medium and long-term measures to be implemented to rehabilitate degraded areas, and manage remnant vegetation and habitat within the buffers and Environmental Protection zoned land within the site.</i></li> <li><i>2) revegetation and regeneration including establishment of appropriate canopy (including koala feed trees), sub-canopy, understorey and ground strata.</i></li> <li><i>3) rehabilitation of creeks and drainage lines.</i></li> <li><i>4) conserving and re-using, where appropriate, the soil seed bank where good quality native vegetation is being removed.</i></li> <li><i>5) collection and propagation of endemic native seed for revegetation on the site.</i></li> <li><i>6) monitoring of water quality and vegetation health within buffers and environmental protection zoned areas.</i></li> <li><i>7) the design, regeneration/revegetation and management of the east-west wildlife corridor/s.</i></li> <li><i>8) measurable performance criteria are to be based on appropriate reference sites within the adjacent Cudgen Nature Reserve.”</i></li> </ol>	<ol style="list-style-type: none"> <li>1. Pre-construction, construction and operational phase measures to be implemented to rehabilitate and manage habitat within EPZs and associated buffers are detailed in <b>SECTIONS 6 - 9</b>.</li> <li>2. Revegetation and rehabilitation measures are provided in <b>SECTION 6.9</b>.</li> <li>3. Revegetation and rehabilitation measures will occur in Management Zones 2, 4, 5 and 8 adjacent to Blacks Creek (<b>SECTION 6.9, FIGURE 14</b>).</li> <li>4. Re-use of topsoil seed bank is detailed <b>SECTION 6.6</b>.</li> <li>5. Plants to be used for revegetation are to be obtained from a local nursery able to supply stock from local provenance. Where existing nursery stock from local provenance is not available collection from species which occur onsite should be carried out as detailed in <b>SECTION 6.9</b>.</li> <li>6. Detailed monitoring programs for the retained vegetation areas are provided in <b>SECTION 8.4</b>. A detailed water quality monitoring program is included in the Overall Water Management Plan (G&amp;S 2020b).</li> <li>7. Rehabilitation measures for the designated East-West Corridor are</li> </ol>

Kings Forest - Precincts 1 - 5 Vegetation & Weed Management Plan

CONDITION	SECTION OF VWMP
	<p>provided in the Kings Forest KPoM (JWA 2019).</p> <p>8. Measurable performance criteria will be collected from reference sites within Cudgen Nature Reserve (SECTION 8.2).</p>
<p><b>Concept Plan Approval - Condition C2</b></p> <p><i>Weed Management Plan</i></p> <p><i>"Each Weed Management Plan update is to detail ongoing weed management measures for each relevant stage".</i></p>	<p>This VWMP considers and details ongoing weed management measures for Precinct 1 - 5 and the proposed East-West Corridor of the Kings Forest development site.</p>
<p><b>Major Project Approval - Condition 39</b></p> <p><i>"1) All Environmental Management Plans shall be revised to address management actions to be undertaken throughout the life of the project as relevant to the development precincts that the plan covers. This includes a detailed set of agreed establishment and maintenance phase performance completion criteria, ongoing monitoring and an annual maintenance schedule of works following the initial establishment period.</i></p> <p><i>2) Performance criteria for all management plans are reviewed to ensure they are specific to each precinct and action, measurable, achievable, relevant and timely.</i></p> <p><i>3) The implementation schedule of all Environmental Management Plans shall be revised to include the following details as relevant to the precincts that the plan covers:</i></p> <ul style="list-style-type: none"> <li><i>a. Actions that are specific to the precinct for which they are addressing</i></li> <li><i>b. Specific map references to identify locations of works for all actions</i></li> <li><i>c. Total areas to be planted (m2)</i></li> <li><i>d. Planting density (per m2)</i></li> <li><i>e. Number of permanent signs to be erected and maintained</i></li> <li><i>f. Total areas for weed management activities (m2)</i></li> </ul>	<ul style="list-style-type: none"> <li>1. All Environmental Management Plans have been updated in accordance with Condition 39.</li> <li>2. SECTIONS 8.4.5 and 8.5.5 details the performance criteria.</li> <li>3. <ul style="list-style-type: none"> <li>a. The tables in SECTION 6 and SECTION 7 identify actions related to Precincts 1 - 5 and the proposed East-West Corridor.</li> <li>b. Specific Management Zones are identified in FIGURE 12.</li> <li>c. SECTION 6.9, TABLE 4.</li> <li>d. SECTION 6.9.</li> <li>e. Refer Precincts 1 - 5 BMP (JWA 2020b).</li> <li>f. SECTION 6.9.</li> </ul> </li> </ul>

CONDITION	SECTION OF VWMP
<p><i>g. Length of any fencing (temporary and permanent)</i></p> <p><i>h. Total areas for heath regeneration and revegetation (m2)</i></p> <p><i>i. Locations and areas (m2) of proposed threatened species habitat</i></p> <p><i>j. Timing and frequency of actions</i></p> <p><i>k. Monitoring requirements (frequency) that are specific to the action”.</i></p>	<p>g. Refer to the Kings Forest KPoM (JWA 2019) and the Kings Forest WSFMP (JWA 2020a).</p> <p>h. SECTION 6.9.</p> <p>i. Locations and areas of proposed threatened species habitat are detailed in the Precincts 1 - 5 TSMP (JWA 2020c), the Kings Forest KPoM (JWA 2019) and the Kings Forest WSFMP (JWA 2020a).</p> <p>j. Timing and frequency of actions are detailed in SECTIONS 6 - 9.</p> <p>k. Monitoring requirements and frequency are discussed in SECTION 8.</p>
<p><b>Major Project Approval - Condition 40</b></p> <p><i>“1) The Works Schedule of all Vegetation Management Plans shall be amended to include “Assisted natural regeneration” as the preferred Proposed Measure for Works Areas 2, 13 and Additional Work Areas and wherever significant natural regeneration is occurring within the EPZ and/or ecological buffer areas. This approach should be adopted in preference to revegetation or rehabilitation programs, incorporated as a guiding principle in the Statement of Commitments and relevant plans.</i></p> <p><i>2) The final Vegetation Management Plans shall be prepared in consultation with Council and submitted to the Secretary for approval within 6 months of the date of determination of the application (No. 2012/2328) made under sections 130(1) and 133 of the Commonwealth Environment Protection and Biodiversity Conservation Act or prior to issue of any construction certificate, whichever occurs first.”</i></p>	<ol style="list-style-type: none"> <li>1. This VWMP has been amended to include assisted natural regeneration where relevant (SECTION 6.9).</li> <li>2. The VWMP has been prepared in consultation with Council.</li> </ol>

CONDITION	SECTION OF VWMP
<p><b>Major Project Approval - Condition 42</b></p> <p><i>“The Weed Management Plans shall be amended to ensure that:</i></p> <p style="padding-left: 40px;">1) <i>Control of all weeds will occur:</i></p> <ul style="list-style-type: none"> <li>- <i>In Environmental Protection Zones located on the Kings Forest site; and</i></li> <li>- <i>For a distance of 20 metres into the adjacent Cudgen Nature Reserve.</i></li> </ul> <p style="padding-left: 40px;">2) <i>Control of Slash pine only will occur for a further distance of 80 metres into Cudgen Nature Reserve.</i></p> <p style="padding-left: 40px;">3) <i>Weed management activities should be undertaken utilising bush regeneration techniques including stem injection.”</i></p>	<ol style="list-style-type: none"> <li>1. Areas to be targeted for weed control activities are outlined in <b>APPENDIX 5 and FIGURE 17.</b></li> <li>2. Cudgen Nature Reserve weed control activities are outlined in <b>SECTION 6.8.</b></li> <li>3. Weed management activities are discussed in <b>SECTION 6.8.</b></li> </ol>

## APPENDIX 2 - ADDITIONAL KINGS FOREST MANAGEMENT PLANS AND THEIR RELATIONSHIP TO THE PRECINCTS 1 - 5 VWMP

Management Plan	Relationship to the Precincts 1 - 5 VWMP
Kings Forest Koala Plan of Management (JWA 2019)	<p>The aim of the Kings Forest KPoM is to protect and conserve the koala population in the Kings Forest area to ensure its ongoing survival through appropriate management of project impacts. The objectives are:</p> <ul style="list-style-type: none"> <li>• To ensure that the proposed development does not remove significant areas of habitat known, or likely to be important for the local koala population;</li> <li>• To ensure that movement corridors for the local koala population are maintained and/or improved;</li> <li>• To protect individual koalas from injury or other adverse impacts during the development phase;</li> <li>• To embellish the habitat values of the site, including the creation of koala habitat as part of a comprehensive offset strategy;</li> <li>• To protect, restore and provide for ongoing maintenance of existing koala habitat;</li> <li>• To ensure that changes in the local environment resulting from the proposed development (e.g. additional traffic, introduction of dogs) do not significantly impact on the local koala population;</li> <li>• To ensure that koalas continue to utilise habitat at Kings Forest;</li> <li>• To ensure appropriate monitoring and management programs are undertaken;</li> <li>• To raise awareness and promote community ownership of environmental management (including the conservation of the local koala population);</li> <li>• Compliance with relevant conditions; and</li> <li>• Further revision of the KPoM as appropriate.</li> </ul>

Management Plan	Relationship to the Precincts 1 - 5 VWMP
<p>Kings Forest Wallum Sedge Frog Management Plan (JWA 2020a)</p>	<p>The aim of the Kings Forest WSFMP is to protect and conserve the WSF population in the Kings Forest area to ensure the ongoing survival of the population through appropriate management of project impacts. The objectives are:</p> <ul style="list-style-type: none"> <li>• To ensure that the proposed development does not remove areas of habitat outside of approved clearing areas;</li> <li>• To ensure that movement corridors for the local WSF population are maintained and/or improved;</li> <li>• To protect WSF from injury or other adverse impacts associated with the construction phase of the development through the implementation of appropriate management actions;</li> <li>• To improve the habitat values of the site, including the creation of WSF habitat as part of a comprehensive and staged offset strategy;</li> <li>• To protect WSF from injury or other adverse impacts associated with the operational (post-construction) phase of the development through the implementation of appropriate management actions;</li> <li>• To ensure that WSF continue to utilise habitat at Kings Forest by way of providing for effective monitoring of performance in relation to the provisions of this WSFMP;</li> <li>• To raise awareness and promote community ownership of environmental management (including the conservation of the local WSF population);</li> <li>• Compliance with relevant conditions; and</li> <li>• Revision of the WSFMP as appropriate.</li> </ul>
<p>Kings Forest Precincts 1 - 5 Buffer Management Plan (JWA 2020b)</p>	<p>The aim of the BMP is to provide guidelines, strategies and methods for the treatment and management of ecological buffers to Cudgen Nature Reserve and EPZs. The BMP provides details of the protection of retained and compensatory habitat where these areas occur within ecological buffers within Precincts 1 - 5.</p>

Management Plan	Relationship to the Precincts 1 - 5 VWMP
Kings Forest Precincts 1 - 5 Threatened Species Management Plan (JWA 2020c)	<p>The TSMP has been prepared to address the management of other Threatened species and their habitat/s occurring in Precincts 1 - 5 EMAs and the proposed East-West Corridor. The TSMP contains the following objectives:</p> <ul style="list-style-type: none"> <li>• weed control measures specific to areas containing listed threatened flora and fauna;</li> <li>• guidelines for the control of human and animal access to areas containing threatened species;</li> <li>• strategies for the embellishment of threatened species habitat through revegetation works and/or the creation of compensatory habitat areas where required.</li> </ul>
Kings Forest Flora and Fauna Monitoring Report (JWA 2020d)	<p>The Kings Forest Flora and Fauna Monitoring Report summarises all flora and fauna monitoring requirements of the development including the koala monitoring program.</p>
Kings Forest Feral Animal Management Plan (JWA 2020e)	<p>The aim of the FAMP is to develop a comprehensive and integrated approach to guide the immediate and long-term management of feral animals within the Kings Forest EMAs and to ensure the protection of native fauna species, with a primary focus on threatened species. Specific objectives of the FAMP are to:</p> <ul style="list-style-type: none"> <li>• Review relevant literature on feral animal control;</li> <li>• Identify feral animals which have been recorded at the site;</li> <li>• Prioritise species considered to warrant priority management;</li> <li>• Examine control and/or eradication methods for 'high priority' feral animals; and</li> <li>• Recommend long-term control methods, including monitoring and reporting.</li> </ul>
Kings Forest Stage 1 Bushfire Management Plan (BushfireSafe 2020)	<p>A fundamental strategy of the Kings Forest Stage 1 Bushfire Management Plan is to assess and manage fuel loads within the Kings Forest site. The risk of high intensity fires will be reduced through controlled low intensity burns or mechanical means if and where appropriate. High-intensity hazard reduction burns and wildfires that result in crown scorch or crown fires should be avoided.</p>

Kings Forest - Precincts 1 - 5 Vegetation & Weed Management Plan

Management Plan	Relationship to the Precincts 1 - 5 VWMP
Kings Forest Koala Fire Management Plan (Wildsite 2020)	The Kings Forest Koala Fire Management Plan details fire management strategies for koala habitat areas on the Kings Forest site. The aim of this plan is to protect and conserve the population and habitat of koalas and other associated biodiversity values in the Kings Forest area through the restoration and maintenance of appropriate fire regimes.
Construction Environmental Management Plan (MUS 2020)	The Construction Environmental Management Plan provides details sufficient to understand and avoid, mitigate and remedy all potential environmental impacts of the project during construction.
Kings Forest Summary of Management Plans (G&S 2020a)	The Kings Forest SOMP has been prepared to summarise all of the management requirements of the various management plans.

## APPENDIX 3 - SPECIES SPECIFIC WEED CONTROL TECHNIQUES

Target Weed		Recommended Techniques
Common Name	Botanical Name	
Balloon Cotton Bush	<i>Gomphocarpus physocarpus</i>	<ul style="list-style-type: none"> <li>Hand-pull; spray (G 1:100 + surfactant).</li> </ul>
Barner Grass	<i>Pennisetum purpureum</i>	<ul style="list-style-type: none"> <li>Overspray (G 1:100); slash back and spray regrowth.</li> </ul>
Billygoat Weed	<i>Ageratina houstonianum</i>	<ul style="list-style-type: none"> <li>Spray or hand-pull and spray regrowth (G 1:100 + surfactant).</li> </ul>
Bird of Paradise	<i>Strelitzia</i> sp.	<ul style="list-style-type: none"> <li>Hand pull young plants and bag and disposed of appropriately.</li> <li>Glyphosate (G 1:100 + surfactant) can be applied as a cut stump, stem injection or basal bark application for mature plants.</li> </ul>
Bitou Bush	<i>Chrysanthemoides monilifera</i>	<ul style="list-style-type: none"> <li>Hand pull young plants and hang up.</li> <li>Cut-scrape-paint at 1:1.5 glyphosate for small plants.</li> <li>Systematic knapsack over spraying of Roundup at the rate of 1:200 with LI700 at a rate of 5ml per litre if no risk to native seedlings.</li> </ul>
Blackberry Nightshade	<i>Solanum nigrum</i>	<ul style="list-style-type: none"> <li>Spray/hand-pull and spray regrowth (G 1:100 + surfactant).</li> </ul>
Broad-leaved Paspalum	<i>Paspalum dilatatum</i>	<ul style="list-style-type: none"> <li>Spray (G 1:100 + surfactant).</li> </ul>
Camphor Laurel	<i>Cinnamomum camphora</i>	<ul style="list-style-type: none"> <li>Seedlings: hand-pull/spray (G 1:100 + MM [1-2g/10L] + surfactant).</li> <li>Stems: &lt;100mm CSP (G 1:1) &gt;100mm frill or inject @ &lt;250mm (G 1:1 2ml/cut) &gt;250mm diameter (G neat 2ml/cut).</li> </ul>
Canna Lily	<i>Canna indica</i>	<ul style="list-style-type: none"> <li>Mattock out or Spray (G 1:100 + surfactant).</li> </ul>
Castor Oil Plant	<i>Ricinus communis</i>	<ul style="list-style-type: none"> <li>Spray (G 1:100 + surfactant) or hand remove. C&amp;P (G 1:1.5)</li> </ul>
Cherry Guava	<i>Psidium cattleianum</i>	<ul style="list-style-type: none"> <li>Hand pull seedlings where possible (i.e. wet areas).</li> <li>Spray seedlings up to 50 cm tall with Glyphosate 1:50 or Glyphosate 1:50 plus Metsulfuron Methyl 1-2 g /10 l H2O.</li> <li>For plants greater than 50 cm tall and less than 5 cm basal diameter apply Access © (1:30 diesel) using basal bark method. Do not use this method within 5 m of creeks.</li> <li>For plants over 5 cm basal diameter cut and paint immediately with Access © (1:30 diesel).</li> </ul>

Kings Forest - Precincts 1 - 5 Vegetation & Weed Management Plan

Target Weed		Recommended Techniques
Common Name	Botanical Name	
		<ul style="list-style-type: none"> <li>• Alternate methods (off label, requires permit): cut and paint with Garlon © (1:60 diesel) or Starane © (35 ml per l diesel) or basal bark application with Garlon © (1:60 diesel) or Starane © (35 ml per l diesel).</li> </ul>
Chinese Burr	<i>Triumfetta rhomboidea</i>	<ul style="list-style-type: none"> <li>• Spray (G 1:100 + surfactant).</li> </ul>
Chinese Elm	<i>Celtis sinensis</i>	<ul style="list-style-type: none"> <li>• Seedlings: Hand pull or spray - 1 part Glyphosate to 50 parts water, surfactant, or for better results spray 1 part Glyphosate to 50 parts water + 1.5g Metsulfuron methyl:10L water, spray adjuvant.</li> <li>• Saplings: Cut, scrape and paint - 1 part Glyphosate to 1.5 parts water.</li> <li>• Trees: Stem injection - 1 part Glyphosate to 1.5 parts water.</li> </ul>
Coastal Morning Glory	<i>Ipomoea cairica</i>	<ul style="list-style-type: none"> <li>• Roll up long runners CSP (G 1:1.5).</li> <li>• Spray (G 1:100 + surfactant).</li> <li>• Stem: Scrape and paint (G 1:1.5).</li> </ul>
Cocos Palm	<i>Syagrus romanzoffianum</i>	<ul style="list-style-type: none"> <li>• Seedling: hand-pull/crown seedlings</li> <li>• Stem: mattock out small trees or cut at ground level below growing joint.</li> </ul>
Common Carpet Grass	<i>Axonopus affinis</i>	<ul style="list-style-type: none"> <li>• Spray (G 1:100 + surfactant).</li> </ul>
Coral Tree	<i>Erythrina sykesii</i>	<ul style="list-style-type: none"> <li>• Frill with glyphosate (1:1) - requires deep cuts with chainsaw/axe and a large volume of herbicide.</li> </ul>
Corky Passionfruit	<i>Passiflora suberosa</i>	<ul style="list-style-type: none"> <li>• Seedling and regrowth: Spray (G 1:100+ surfactant or G 1:100 + MM 1-1.5gm/10L + surfactant).</li> <li>• Stems: CS&amp;P (G 1:1.5).</li> </ul>
Crofton Weed	<i>Ageratina adenophora</i>	<ul style="list-style-type: none"> <li>• Spray: (G 1:100 or MM 1g/10L + surfactant).</li> </ul>
Cuphea	<i>Cuphea carthagenensis</i>	<ul style="list-style-type: none"> <li>• Spray (G 1:100 + LI700®).</li> </ul>
Duranta	<i>Duranta repens</i>	<ul style="list-style-type: none"> <li>• Hand-pull seedlings or spray (G 1:100 + LI700®); cut, scrape and paint saplings (G 1:1.5); frill or spear trees (G (1:1.5). Best time for treatment early summer or when actively growing.</li> </ul>
Edible Passionfruit	<i>Passiflora edulis</i>	<ul style="list-style-type: none"> <li>• Handpulling, Cut Scrape and Paint with 1:1 glyphosate.</li> <li>• Spraying of seedlings with 1:100 glyphosate + surfactant (note: spraying is not the most effective control as waxy leaves prevent herbicide uptake).</li> </ul>

Kings Forest - Precincts 1 - 5 Vegetation & Weed Management Plan

Target Weed		Recommended Techniques
Common Name	Botanical Name	
Exotic Clerodendron	<i>Clerodendron</i> sp.	<ul style="list-style-type: none"> <li>• Roll up long runners CSP (G 1:1.5).</li> <li>• Spray (G 1:100 + surfactant).</li> <li>• Stem: Scrape and paint (G 1:1.5).</li> </ul>
Fireweed	<i>Senecio madagascariensis</i>	<ul style="list-style-type: none"> <li>• Hand pull and bag and dispose of appropriately.</li> <li>• Flowering plants can be spot sprayed with herbicides containing aminopyralid or metsulfuron-methyl. The best time to treat fireweed with herbicide is late autumn.</li> </ul>
Fishbone Fern	<i>Nephrolepis cordifolia</i>	<ul style="list-style-type: none"> <li>• Spraying of seedlings with 1:50 glyphosate + Brushhoff® mix (1.5g/10L) and Protec®.</li> </ul>
Fleabane	<i>Conyza</i> sp.	<ul style="list-style-type: none"> <li>• Spray: (G + surfactant).</li> </ul>
Giant Devil's Thorn	<i>Solanum chrysotrichum</i>	<ul style="list-style-type: none"> <li>• Seedling: Hand-pull / spray (G 1:100 + surfactant).</li> <li>• Stems: &lt;100mm CSP (G 1:1.5)</li> <li>• &gt;100mm frill or inject (G 1:1.5 2ml/cut).</li> </ul>
Glory Lily	<i>Gloriosa superba</i>	<ul style="list-style-type: none"> <li>• Control prior to fruiting;</li> <li>• 2 sprays required;</li> <li>• First in December using 1:50 glyphosate and 1 g/10 litres Brushhoff® with 1% pulse.</li> <li>• Second in February as above.</li> <li>• Ongoing monitoring and treatment required to achieve eradication.</li> </ul>
Happy Plant	<i>Dracaena</i> sp.	<ul style="list-style-type: none"> <li>• Cut and paint (G 1:1.5); Cut, scrape and paint (G 1:1.5); Spray (G 1:100 + surfactant).</li> </ul>
Inkweed	<i>Phytolacca octandra</i>	<ul style="list-style-type: none"> <li>• Manual removal with mattock or Spray: (G 1:100 + surfactant).</li> </ul>
Lantana	<i>Lantana camara</i>	<ul style="list-style-type: none"> <li>• Hand pull/brushhook.</li> <li>• Spray: (G 1:100 +surfactant) or splatter gun (G 1:9).</li> <li>• Stem: CSP (G 1:1).</li> </ul>
Lemon-scented Teatree	<i>Leptospermum petersonii</i>	<ul style="list-style-type: none"> <li>• Grub out with bulldozer</li> </ul>
Madeira Vine	<i>Anredera cordifolia</i>	<ul style="list-style-type: none"> <li>• Spray: ground infestation (G 1:50 + Pulse®).</li> <li>• Stem: scrape as much stem as possible (inner part of vine on one side only) and paint (G neat).</li> </ul>

Kings Forest - Precincts 1 - 5 Vegetation & Weed Management Plan

Target Weed		Recommended Techniques
Common Name	Botanical Name	
		<ul style="list-style-type: none"> <li>• Tubers: scrape/gouge and paint (G neat). Bag any tubers or small hand-weeded vines and remove from site or compost under black plastic.</li> </ul>
Molasses Grass	<i>Melinis minutiflora</i>	<ul style="list-style-type: none"> <li>• Spray: (G 1:100 + surfactant).</li> </ul>
Monstera	<i>Monstera deliciosa</i>	<ul style="list-style-type: none"> <li>• Mattock out and remove from site or Overspray Spray: (G 1:100 + Brushoff® mix (1.5g/10L)</li> </ul>
Morning Glory	<i>Ipomoea purpurea</i>	<ul style="list-style-type: none"> <li>• Roll up long runners and hang up to dry; scrape and paint (G 1:1.5); spray (G 1:100 + surfactant).</li> </ul>
Moth Vine	<i>Araujia sericiflora</i>	<ul style="list-style-type: none"> <li>• Spray: (G 1:100 + surfactant). Hand pull seedlings. Cut and paint (G 1:1.5) large stems.</li> </ul>
Mother-in-law's Tongue	<i>Sansevieria trifasciata</i>	<ul style="list-style-type: none"> <li>• Hand removal of all pants where possible.</li> <li>• Spray plantlets with glyph. 1:50 with Brushoff® 1.5 g/10l and Protec®.</li> </ul>
Ochna	<i>Ochna serrulata</i>	<ul style="list-style-type: none"> <li>• Seedlings: Spray (G 1:50 + MM 1-1.5g/10L + surfactant)</li> <li>• Stems: &lt;100mm CSP &gt;100mm frill or inject (G 1:1.5 + MM 1g/L]. Best treatment in late spring.</li> </ul>
Paddy's Lucerne	<i>Sida rhombifolia</i>	<ul style="list-style-type: none"> <li>• Spray: (G 1:100 + surfactant).</li> </ul>
Pampas Grass	<i>Cortaderia jubata</i>	<ul style="list-style-type: none"> <li>• Spray: (G 1:100 + surfactant) for plants &lt;1m, or use a higher rate (e.g. 1:77) for larger plants. Spray before flowering.</li> </ul>
Para Grass	<i>Brachiaria mutica</i>	<ul style="list-style-type: none"> <li>• Spray: (G 1:77 + surfactant) or hand remove (crown out)</li> </ul>
Paspalum	<i>Paspalum sp.</i>	<ul style="list-style-type: none"> <li>• Spray (G 1:100 + surfactant).</li> </ul>
Perennial Soybean	<i>Neonotonia wightii</i>	<ul style="list-style-type: none"> <li>• Cut and paint (G 1:1.5); Cut, scrape and paint (G 1:1.5); Spray (G 1:100 + surfactant).</li> </ul>
Pigeon Grass	<i>Setaria sphacelata</i>	<ul style="list-style-type: none"> <li>• Spray: (G 1:100 + surfactant).</li> </ul>
Poor Man's Orchid	<i>Epidendrum sp.</i>	<ul style="list-style-type: none"> <li>• Hand pull, bag and remove.</li> <li>• Spray: 1:50 glyphosate + 1.5 g Associate®:10 L of water + surfactant (e.g. Pulse®) + dye.</li> </ul>
Redhead Cotton Bush	<i>Asclepias curassavica</i>	<ul style="list-style-type: none"> <li>• Hand-pull; spray (G 1:100 + surfactant).</li> </ul>
Red Natal Grass	<i>Melinis repens</i>	<ul style="list-style-type: none"> <li>• Spray: (G 1:100 + surfactant).</li> </ul>
Rhodes Grass	<i>Chloris gayana</i>	<ul style="list-style-type: none"> <li>• Spray: (G 1:100 + surfactant).</li> </ul>

Kings Forest - Precincts 1 - 5 Vegetation & Weed Management Plan

Target Weed		Recommended Techniques
Common Name	Botanical Name	
Scotch Thistle	<i>Onopordum acanthium</i>	<ul style="list-style-type: none"> <li>• Spray: (G 1:100 + surfactant).</li> </ul>
Scrobic	<i>Paspalum scrobiculatum</i>	<ul style="list-style-type: none"> <li>• Spray: (G 1:100 + surfactant).</li> </ul>
Slash Pine	<i>Pinus elliotii</i>	<ul style="list-style-type: none"> <li>• Stem injection of trees with glyphosate (using axe or drill) at 1:1.5 or slash.</li> </ul>
Siratro	<i>Macroptilium atropurpureum</i>	<ul style="list-style-type: none"> <li>• Spray: (G 1:50 + MM 1-2gm/10L + surfactant).</li> <li>• Stem: CSP (G 1:1).</li> </ul>
Small-leaved Privet	<i>Ligustrum sinense</i>	<ul style="list-style-type: none"> <li>• Seedlings: hand-pull or spray (G 1:50 + surfactant or G 1:50 + MM 1.5gms/10L + wetting agent or MM 1-2gms/10L + wetting agent); Saplings: CS&amp;P or C&amp;P (1:1.5); Trees: F/I (1:1.5).</li> </ul>
Thickhead	<i>Crassocephalum crepidioides</i>	<ul style="list-style-type: none"> <li>• Spray: (G 1:50 + MM 1-2gm/10L + surfactant).</li> <li>• Stem: CSP (G 1:1).</li> </ul>
Umbrella Tree	<i>Schefflera actinophylla</i>	<ul style="list-style-type: none"> <li>• Seedlings: hand-pull/spray (G 1:50 + surfactant or G 1:50 + MM 1-2gms/10L + Ag 2ml/10L)</li> <li>• Stem: &lt;100mm CSP &gt;100mm frill or inject (G 1:1.5). Best treatment in late spring.</li> </ul>
Whiskey Grass	<i>Andropogon virginicus</i>	<ul style="list-style-type: none"> <li>• Spray: (G 1:100 + surfactant).</li> </ul>
White Passionfruit	<i>Passiflora subpeltata</i>	<ul style="list-style-type: none"> <li>• Handpulling, Cut Scrape and Paint with 1:1 glyphosate.</li> <li>• Spraying of seedlings with 1:100 glyphosate + surfactant (note: spraying is not the most effective control as waxy leaves prevent herbicide uptake).</li> </ul>
Wild Tobacco	<i>Solanum mauritianum</i>	<ul style="list-style-type: none"> <li>• Spray: Hand pull/spray (G 1:100 + surfactant).</li> <li>• Stem: CSP (G 1:1).</li> </ul>
Winter Senna	<i>Senna pendula var. glabrata</i>	<ul style="list-style-type: none"> <li>• Seedlings: hand-pull/spray (G 1:100 + surfactant)</li> <li>• Stem: &lt;100mm CSP &gt;100mm frill or inject (G 1:1.5). Best time for treatment early summer or when actively growing.</li> </ul>

## APPENDIX 4 - WEED CONTROL METHODS

Weed Control Method	Technique
Bagging	Plants which can reproduce from plant material such as bulbs, tubers, corms, runners (stolons), underground horizontal stems (rhizomes), and plantlets formed on leaves should be bagged and removed from the site. Bagged plant material can be composted, burned or disposed in a landfill. Compost piles should be well anchored and positioned away from the flooding zone and from cattle. Compost piles should be appropriately monitored. Any burning should be undertaken away from the riparian zone and from native vegetation.
Basal bark treatment	Used for saplings up to approximately 75 mm in diameter. The entire surface of the stem is treated from ground level to about 300 mm above the ground. Herbicide can be applied by brush or by spraying with a low pressure setting.
Cut	The cut stump method must involve completely cutting the trunk or stem of the plant, at a level below the first branches or as near as practicable to ground level. Follow up maintenance (on an annual or bi-annual basis) to suppress regrowth, suckering and coppicing is essential.
Cut, scrape and paint	The cut, scrape and paint method must involve completely cutting the trunk or stem of the plant, at a level below the first branches or as near as practicable to ground level. Herbicide must then be immediately applied to the cut surface of the cut trunk or stem. Following the cut and paint, the exposed stem or root surface is scraped till a light green coloured layer is visible. Herbicide is then immediately applied to the scraped surfaces.
Debris management	In the case of non-locally indigenous plants species that reproduce or regenerate vegetatively, debris should be managed in a manner to ensure complete death and should not be stacked and burned within 20 m of remaining native vegetation.
Hand held foliar spraying	Foliar spraying involves spraying the foliage of the plant with an appropriate herbicide. Herbicide should be applied with a low-pressure concentrated spray stream sufficient to avoid misting and spray drift. Foliar spraying should only be used on plants that have a total height of 1.5 m or less. In the case of deciduous plants, foliar spraying should only be undertaken when foliage is present on the target weeds and before yellowing and leaf fall commences. Foliar spraying should only be undertaken in a manner that does not cause harm to any adjacent native vegetation. Any native vegetation within one metre of the target plant must be adequately protected from direct spray, splash or drift. Foliar spraying must not occur over any water body (whether still or flowing) or in any manner which may result in direct or indirect application to a water body. Foliar spraying must only be carried out in calm conditions and must avoid spray drift.

Weed Control Method	Technique
Hand pulling	Hand pulling must involve gripping and pulling the stem of the plant by hand to carefully remove the whole stem and root system from the ground. Hand pulling should only be used for plants that can be removed with minimal disturbance to the soil and existing litter or vegetative groundcover. Hand pulling is most effective when the plants to be removed are small and the soil is moist.
Herbicide use	<p>All use of herbicide involved in the carrying out of clearing activities must comply with:</p> <ul style="list-style-type: none"> <li>• The directions on the attached labelling; or</li> <li>• The National Registration Authority “North Coast Off-label Permit”, or NRA permit PER3512 covering methods listed in the Appendix to Common Weeds of Northern NSW Rainforests published by the Big Scrub Rainforest Landcare Group.</li> </ul> <p>Any mixing of herbicide must be carried out at least 20 metres away from any watercourse and used herbicide containers must be disposed of in an appropriate manner. All use of herbicide must be undertaken with regard to the provisions of the <i>Protection of the Environment Operations Act (1997)</i>. If a risk of pollution exists, a licence may be required from the Environment Protection Authority before work commences. Herbicide clearing methods must only be undertaken, or actively supervised, by a person or persons who have training and accreditation in the safe use and handling of chemicals. Herbicide clearing methods should only be used whilst the target plants are actively growing</p>
Ringbarking	Ringbarking must involve the placing of a continuous sharp cut line (frill) around the entire trunk, to a depth below the sap flow zone, generally using an axe or tomahawk.

Weed Control Method	Technique
Scrape and paint	The scrape/gouge and paint, method is used for vine weeds with tubers such as Madeira vine ( <i>Anredera cordifolia</i> ). Sections of stem at least 300 mm long are scraped firmly, exposing the fibres of the stem, and the scraped sections are painted with herbicide (for Madeira vine, 75% Glyphosate is used). The stems must not be severed. Gouging may also be used in the case of plants with fleshy tubers. Gouging is like 'eying' a potato except that a deeper well is gouged with the tip of a knife and then filled with herbicide.
Stem injection - frilling, drilling, spearing	A series of drill-holes or cuts must be made into the sapwood around the trunk below the branches of the plant. Herbicide must then be immediately injected into each hole or cut at the recommended dosage. Holes and cuts must be angled downwards into the trunk to prevent herbicide escape. Stem injection must not be undertaken immediately before or after rain. In the case of deciduous plants, stem injection must be undertaken during late summer to early autumn. Plants that have been stem injected should be left in place undisturbed for a minimum of 12 months after herbicide application.
Vine removal	Where the vines are generally prostrate on the ground, aerial parts of the vine (stems and leaves) should be rolled into heaps then cut and paint or hand pulling applied. Where the vines are hanging from trees then cut and paint or hand pulling applied. Hand pulling of Madeira vine, Cape ovy and Climbing cactus must be avoided.

## APPENDIX 5 - REHABILITATION AREA SELECTION CRITERIA

It should be noted that as part of the reconciliation of Commonwealth and State conditions, the exhibition process and the subsequent assessment of submissions, a number of supplementary recommendations from DoPE, BCD and TSC have been incorporated into the rehabilitation area selection process.

Previous versions of the Precincts 1 - 5 VWMP (Landpartners 2009, JWA 2012) referred to numerous identified “work areas”. However, the methodology utilised in the selection and confirmation of current rehabilitation areas involved a tiered or “top-down” approach, which, essentially means starting with the big picture and working down to the finer detail.

A summary of each major step in the process is described below. Each step often involved review and amendments to vegetation and/or habitat mapping:

- Step One - An initial assessment/review of pre-clearing vegetation types (Terrestria 2014) across all of the EMAs was completed. The New South Wales VIS database was interrogated to determine the appropriate PCTs which equated to the pre-clearing vegetation types. The Tweed Vegetation Management Strategy (Kingston *et al.* 2004) was also reviewed to determine appropriate corresponding vegetation codes.
- Step Two - Areas of EMAs committed to other uses were then filtered out of the candidate rehabilitation areas. The areas filtered out were:
  - Retained koala habitat - to be protected and enhanced in accordance with the KPoM (JWA 2019).
  - Retained WSF habitat - to be protected and enhanced in accordance with the WSFMP (JWA 2020a).
  - Compensatory koala habitat (JWA 2019) - avoided/no overlaps in accordance with MP08\_0194 (MOD 4) Condition 41.
  - Compensatory WSF habitat (JWA 2020a) - avoided/no overlaps in accordance with MP08\_0194 (MOD 4) Condition 41.
- Step Three - Small areas (<1,000 m<sup>2</sup>) isolated from any other similar compensatory or retained habitat area were excluded (as requested by BCD during the exhibition and submission phases in 2017/2018 and also by the EPBC Approval of 2015).
- Step Four - Each of the remaining rehabilitation areas were allocated to a relevant PCT. Vegetation to be rehabilitated on the Kings Forest site needs to be consistent with NSW BCD standards to allow comparison with relevant vegetation descriptions and their benchmarks. In this regard, the PCT benchmark descriptions were accessed via the NSW BCD database (i.e. the BioNet Vegetation Classification System) to determine appropriate PCT descriptions for each proposed rehabilitation area. It is noted however that PCT descriptions are still undergoing revision, and many remain undescribed for the IBRA subregion and therefore corresponding Tweed Vegetation Management Strategy 2004 (TVMS) codes have also been provided.

- Step Five - A final filter was applied in the process whereby any small, thin or irregularly shaped polygons of a particular habitat type were merged with adjacent vegetation types to create larger, more intact, and more manageable habitat areas.

## APPENDIX 6 - MANAGEMENT ZONE IDENTIFICATION AND SPECIFIC VEGETATION MANAGEMENT REQUIREMENTS

ID	Management Zone	Sub-type	Precinct	Specific Vegetation Management Requirements
KR-001	Zone 2: Retained Koala Habitat	Secondary A Habitat	1	<ol style="list-style-type: none"> <li>1. Primary weed control of Lantana (<i>Lantana camara</i>), Winter senna (<i>Senna pendula</i> var. <i>glabrata</i>), Ochna (<i>Ochna serrulata</i>), Bitou bush (<i>Chrysanthemoides monilifera</i>) and pasture grasses along Tweed Coast Road in accordance with SECTION 6.8.4.2.</li> <li>2. Secondary weed control/maintenance in accordance with SECTION 6.8.4.3.</li> </ol>
KR-002	Zone 2: Retained Koala Habitat	Secondary A Habitat	1	<ol style="list-style-type: none"> <li>1. Habitat maintenance/assisted natural regeneration in accordance with SECTIONS 6.7 and 6.9.</li> <li>2. Where weed control works result in bare areas or areas of exposed topsoil, appropriate revegetation techniques will be implemented in accordance with SECTION 6.9.</li> </ol>
KR-003	Zone 2: Retained Koala Habitat	Primary / Secondary A Habitat	2	<ol style="list-style-type: none"> <li>1. Monitor natural regeneration within small area of cleared/highly disturbed land adjoining Tweed Coast Road in accordance with SECTION 8.4.</li> <li>2. Infill planting/revegetation within small area of cleared/highly disturbed land adjoining Tweed Coast Road (if monitoring shows necessary) in accordance with SECTIONS 6.7 and 6.9.</li> </ol>
KR-004	Zone 2: Retained Koala Habitat	Primary Habitat	2	<ol style="list-style-type: none"> <li>1. Primary weed control of mature Slash pine in accordance with SECTION 6.8.4.2.</li> <li>2. Secondary weed control/maintenance in accordance with SECTION 6.8.4.3.</li> </ol>
KR-005	Zone 2: Retained Koala Habitat	Primary Habitat	3	<ol style="list-style-type: none"> <li>1. Primary weed control of Slash pine wildings in accordance with SECTION 6.8.4.2.</li> <li>2. Secondary weed control/maintenance in accordance with SECTION 6.8.4.3.</li> </ol>
KR-006	Zone 2: Retained Koala Habitat	Primary / Secondary A Habitat	5	<ol style="list-style-type: none"> <li>1. Habitat maintenance/assisted natural regeneration in accordance with SECTIONS 6.7 and 6.9.</li> </ol>

Kings Forest - Precincts 1 - 5 Vegetation & Weed Management Plan

ID	Management Zone	Sub-type	Precinct	Specific Vegetation Management Requirements
				2. Where weed control works result in bare areas or areas of exposed topsoil, appropriate revegetation techniques will be implemented in accordance with SECTION 6.9.
KR-007	Zone 2: Retained Koala Habitat	Secondary A Habitat	5	1. Primary weed control of mature Slash pine in accordance with SECTION 6.8.4.2. 2. Secondary weed control/maintenance in accordance with SECTION 6.8.4.3.
KR-008	Zone 2: Retained Koala Habitat	Primary / Secondary A Habitat	5	1. Primary weed control of mature Slash pine in accordance with SECTION 6.8.4.2. 2. Secondary weed control/maintenance in accordance with SECTION 6.8.4.3.
KR-009	Zone 2: Retained Koala Habitat	Primary / Secondary A Habitat	5	1. Primary weed control of scattered mature Slash pine and pine wildings in accordance with SECTION 6.8.4.2. 2. Secondary weed control/maintenance in accordance with SECTION 6.8.4.3.
KR-010	Zone 2: Retained Koala Habitat	Primary / Secondary A Habitat	5	1. Primary weed control of scattered mature Slash pine and pine wildings in accordance with SECTION 6.8.4.2. 2. Secondary weed control/maintenance in accordance with SECTION 6.8.4.3.
KR-011	Zone 2: Retained Koala Habitat	Primary Habitat	5	1. Habitat maintenance/assisted natural regeneration in accordance with SECTIONS 6.7 and 6.9. 2. Where weed control works result in bare areas or areas of exposed topsoil, appropriate revegetation techniques will be implemented in accordance with SECTION 6.9.
KR-012	Zone 2: Retained Koala Habitat	Secondary A Habitat	5	1. Habitat maintenance/assisted natural regeneration in accordance with SECTIONS 6.7 and 6.9. 2. Where weed control works result in bare areas or areas of exposed topsoil, appropriate revegetation techniques will be implemented in accordance with SECTION 6.9.

Kings Forest - Precincts 1 - 5 Vegetation & Weed Management Plan

ID	Management Zone	Sub-type	Precinct	Specific Vegetation Management Requirements
KR-013	Zone 2: Retained Koala Habitat	Secondary A Habitat	5	<ol style="list-style-type: none"> <li>1. Habitat maintenance/assisted natural regeneration in accordance with <b>SECTIONS 6.7 and 6.9.</b></li> <li>2. Where weed control works result in bare areas or areas of exposed topsoil, appropriate revegetation techniques will be implemented in accordance with <b>SECTION 6.9.</b></li> </ol>
KR-014	Zone 2: Retained Koala Habitat	Secondary A Habitat	5	<ol style="list-style-type: none"> <li>1. Primary weed control of mature Slash pine in accordance with <b>SECTION 6.8.4.2.</b></li> <li>2. Secondary weed control/maintenance in accordance with <b>SECTION 6.8.4.3.</b></li> </ol>
KR-015	Zone 2: Retained Koala Habitat	Secondary A Habitat	5	<ol style="list-style-type: none"> <li>1. Peg boundaries.</li> <li>2. Primary weed control of Slash pine in accordance with <b>SECTION 6.8.4.2.</b></li> <li>3. Secondary weed control/maintenance in accordance with <b>SECTION 6.8.4.3.</b></li> </ol>
KR-016	Zone 2: Retained Koala Habitat	Primary / Secondary A Habitat	5	<ol style="list-style-type: none"> <li>1. Primary weed control of Slash pine, particularly in the north-eastern portion, in accordance with <b>SECTION 6.8.4.2.</b></li> <li>2. Secondary weed control/maintenance in accordance with <b>SECTION 6.8.4.3.</b></li> </ol>
KR-017	Zone 2: Retained Koala Habitat	Secondary A Habitat	5	<ol style="list-style-type: none"> <li>1. Habitat maintenance/assisted natural regeneration in accordance with <b>SECTIONS 6.7 and 6.9.</b></li> <li>2. Where weed control works result in bare areas or areas of exposed topsoil, appropriate revegetation techniques will be implemented in accordance with <b>SECTION 6.9.</b></li> </ol>
KR-018	Zone 2: Retained Koala Habitat	Secondary A Habitat	5	<ol style="list-style-type: none"> <li>1. Habitat maintenance/assisted natural regeneration in accordance with <b>SECTIONS 6.7 and 6.9.</b></li> <li>2. Where weed control works result in bare areas or areas of exposed topsoil, appropriate revegetation techniques will be implemented in accordance with <b>SECTION 6.9.</b></li> </ol>

Kings Forest - Precincts 1 - 5 Vegetation & Weed Management Plan

ID	Management Zone	Sub-type	Precinct	Specific Vegetation Management Requirements
KR-019	Zone 2: Retained Koala Habitat	Secondary A Habitat	5	<ol style="list-style-type: none"> <li>1. Habitat maintenance/assisted natural regeneration in accordance with <b>SECTIONS 6.7 and 6.9.</b></li> <li>2. Where weed control works result in bare areas or areas of exposed topsoil, appropriate revegetation techniques will be implemented in accordance with <b>SECTION 6.9.</b></li> </ol>
KR-020	Zone 2: Retained Koala Habitat	Secondary A Habitat	5	<ol style="list-style-type: none"> <li>1. Habitat maintenance/assisted natural regeneration in accordance with <b>SECTIONS 6.7 and 6.9.</b></li> <li>2. Where weed control works result in bare areas or areas of exposed topsoil, appropriate revegetation techniques will be implemented in accordance with <b>SECTION 6.9.</b></li> </ol>
KR-021	Zone 2: Retained Koala Habitat	Primary Koala Habitat	5	<ol style="list-style-type: none"> <li>1. Primary weed control of mature Slash pine in accordance with <b>SECTION 6.8.4.2.</b></li> <li>2. Secondary weed control/maintenance in accordance with <b>SECTION 6.8.4.3.</b></li> </ol>
WR-001	Zone 3: Retained WSF Habitat	Forage Habitat	5	<ol style="list-style-type: none"> <li>1. Peg boundaries within powerline easement to ensure no continued/future slashing.</li> <li>2. Primary weed control of mature Slash pine in accordance with <b>SECTION 6.8.4.2.</b></li> <li>3. Secondary weed control/maintenance in accordance with <b>SECTION 6.8.4.3.</b></li> </ol>
WR-002	Zone 3: Retained WSF Habitat	Forage Habitat	5	<ol style="list-style-type: none"> <li>1. Peg boundaries.</li> <li>2. Primary weed control of mature Slash pine in accordance with <b>SECTION 6.8.4.2.</b></li> <li>3. Monitor natural regeneration within cleared/highly disturbed land in accordance with <b>SECTION 8.4.</b></li> <li>4. Secondary weed control/maintenance in accordance with <b>SECTION 6.8.4.3.</b></li> <li>5. Infill planting/revegetation within cleared/highly disturbed land (if monitoring shows necessary) in accordance with <b>SECTION 6.9.</b></li> </ol>

Kings Forest - Precincts 1 - 5 Vegetation & Weed Management Plan

ID	Management Zone	Sub-type	Precinct	Specific Vegetation Management Requirements
WR-003	Zone 3: Retained WSF Habitat	Forage Habitat	5	<ol style="list-style-type: none"> <li>1. Peg boundaries.</li> <li>2. Primary weed control of mature Slash pine and Blackberry in accordance with SECTION 6.8.4.2.</li> <li>3. Monitor natural regeneration within cleared/highly disturbed land in accordance with SECTION 8.4.</li> <li>4. Secondary weed control/maintenance in accordance with SECTION 6.8.4.3.</li> <li>5. Infill planting/revegetation within cleared/highly disturbed land (if monitoring shows necessary) in accordance with SECTION 6.9.</li> </ol>
WR-004	Zone 3: Retained WSF Habitat	Forage Habitat	5	<ol style="list-style-type: none"> <li>1. Peg boundaries.</li> <li>2. Primary weed control of mature Slash pine in accordance with SECTION 6.8.4.2.</li> <li>3. Monitor natural regeneration within cleared/highly disturbed land in accordance with SECTION 8.4.</li> <li>4. Secondary weed control/maintenance in accordance with SECTION 6.8.4.3.</li> <li>5. Infill planting/revegetation within cleared/highly disturbed land (if monitoring shows necessary) in accordance with SECTION 6.9.</li> </ol>
WR-005	Zone 3: Retained WSF Habitat	Forage Habitat	5	<ol style="list-style-type: none"> <li>1. Peg boundaries.</li> <li>2. Primary weed control of scattered Slash pine in accordance with SECTION 6.8.4.2.</li> <li>3. Monitor natural regeneration within cleared/highly disturbed land in accordance with SECTION 8.4.</li> <li>4. Secondary weed control/maintenance in accordance with SECTION 6.8.4.3.</li> <li>5. Infill planting/revegetation within cleared/highly disturbed land (if monitoring shows necessary) in accordance with SECTION 6.9.</li> </ol>
WR-006	Zone 3: Retained WSF Habitat	Forage Habitat	4	<ol style="list-style-type: none"> <li>1. Peg boundaries.</li> </ol>

Kings Forest - Precincts 1 - 5 Vegetation & Weed Management Plan

ID	Management Zone	Sub-type	Precinct	Specific Vegetation Management Requirements
				<ol style="list-style-type: none"> <li>2. Primary weed control of scattered Slash pine in accordance with SECTION 6.8.4.2.</li> <li>3. Monitor natural regeneration within cleared/highly disturbed land in accordance with SECTION 8.4.</li> <li>4. Secondary weed control/maintenance in accordance with SECTION 6.8.4.3.</li> <li>5. Infill planting/revegetation within cleared/highly disturbed land (if monitoring shows necessary) in accordance with SECTION 6.9.</li> </ol>
WR-007	Zone 3: Retained WSF Habitat	Forage Habitat	4	<ol style="list-style-type: none"> <li>1. Peg boundaries.</li> <li>2. Primary weed control of scattered Slash pine in accordance with SECTION 6.8.4.2.</li> <li>3. Monitor natural regeneration within cleared/highly disturbed land in accordance with SECTION 8.4.</li> <li>4. Secondary weed control/maintenance in accordance with SECTION 6.8.4.3.</li> </ol> <p>Infill planting/revegetation within cleared/highly disturbed land (if monitoring shows necessary) in accordance with SECTION 6.9.</p>
WR-008	Zone 3: Retained WSF Habitat	Forage Habitat	5	<ol style="list-style-type: none"> <li>1. Peg boundaries.</li> <li>2. Primary weed control of scattered Slash pine in accordance with SECTION 6.8.4.2.</li> <li>3. Monitor natural regeneration within cleared/highly disturbed land in accordance with SECTION 8.4.</li> <li>4. Secondary weed control/maintenance in accordance with SECTION 6.8.4.3.</li> </ol> <p>Infill planting/revegetation within cleared/highly disturbed land (if monitoring shows necessary) in accordance with SECTION 6.9.</p>
KC-001	Zone 4: Koala Compensatory Habitat	Dry Primary	2	<ol style="list-style-type: none"> <li>1. Peg boundaries.</li> <li>2. Primary weed control of mature Slash pine in accordance with SECTION 6.8.4.2.</li> <li>3. Revegetation utilising koala food trees in accordance with Section 7.6 of the KPoM (JWA 2019).</li> </ol>

Kings Forest - Precincts 1 - 5 Vegetation & Weed Management Plan

ID	Management Zone	Sub-type	Precinct	Specific Vegetation Management Requirements
				4. Secondary weed control/maintenance in accordance with SECTION 6.8.4.3.
KC-002	Zone 4: Koala Compensatory Habitat	Dry Primary plus Dry Heath	2	<ol style="list-style-type: none"> <li>1. Peg boundaries.</li> <li>2. Primary weed control of mature Slash pine in accordance with SECTION 6.8.4.2.</li> <li>3. Revegetation utilising koala food trees in accordance with the Section 7.6 of the KPoM (JWA 2019).</li> <li>4. Secondary weed control/maintenance in accordance with SECTION 6.8.4.3.</li> </ol>
KC-003	Zone 4: Koala Compensatory Habitat	Dry Primary	3	<ol style="list-style-type: none"> <li>1. Peg boundaries.</li> <li>2. Primary weed control of pasture grasses in accordance with SECTION 6.8.4.2.</li> <li>3. Revegetation utilising koala food trees in accordance with the Section 7.6 of the KPoM (JWA 2019).</li> <li>4. Secondary weed control/maintenance in accordance with SECTION 6.8.4.3.</li> </ol>
KC-004	Zone 4: Koala Compensatory Habitat	Dry Primary	3	<ol style="list-style-type: none"> <li>1. Peg boundaries.</li> <li>2. Primary weed control of dense Barner grass in accordance with SECTION 6.8.4.2.</li> <li>3. Revegetation utilising koala food trees in accordance with Section 7.6 of the KPoM (JWA 2019).</li> <li>4. Secondary weed control/maintenance in accordance with SECTION 6.8.4.3.</li> </ol>
KC-005	Zone 4: Koala Compensatory Habitat	Wet Primary	3	<ol style="list-style-type: none"> <li>1. Peg boundaries.</li> <li>2. Primary weed control of pasture grasses in accordance with SECTION 6.8.4.2.</li> <li>3. Revegetation utilising koala food trees in accordance with Section 7.6 of the KPoM (JWA 2019).</li> <li>4. Secondary weed control/maintenance in accordance with SECTION 6.8.4.3.</li> </ol>
KC-006	Zone 4:	Dry Primary plus Dry Heath	5	<ol style="list-style-type: none"> <li>1. Peg boundaries.</li> </ol>

Kings Forest - Precincts 1 - 5 Vegetation & Weed Management Plan

ID	Management Zone	Sub-type	Precinct	Specific Vegetation Management Requirements
	Koala Compensatory Habitat			<ol style="list-style-type: none"> <li>2. Primary weed control of Slash pine wildings in accordance with SECTION 6.8.4.2.</li> <li>3. Revegetation utilising koala food trees in accordance with Section 7.6 of the KPoM (JWA 2019).</li> <li>4. Secondary weed control/maintenance in accordance SECTION 6.8.4.3.</li> </ol>
KC-007	Zone 4: Koala Compensatory Habitat	Dry Primary	5	<ol style="list-style-type: none"> <li>1. Peg boundaries.</li> <li>2. Primary weed control of mature Slash pine and scattered Bitou bush in accordance with SECTION 6.8.4.2.</li> <li>3. Revegetation utilising koala food trees in accordance with Section 7.6 of the KPoM (JWA 2019).</li> <li>4. Secondary weed control/maintenance in accordance with SECTION 6.8.4.3.</li> </ol>
KC-008	Zone 4: Koala Compensatory Habitat	Dry Primary	5	<ol style="list-style-type: none"> <li>1. Peg boundaries.</li> <li>2. Primary weed control of mature Slash pine in accordance with SECTION 6.8.4.2.</li> <li>3. Revegetation utilising koala food trees in accordance with Section 7.6 of the KPoM (JWA 2019).</li> <li>4. Secondary weed control/maintenance in accordance with SECTION 6.8.4.3.</li> </ol>
KC-009	Zone 4: Koala Compensatory Habitat	Dry Primary	5	<ol style="list-style-type: none"> <li>1. Peg boundaries.</li> <li>2. Primary weed control of very dense Slash pine wildings and mature Slash pine in accordance with SECTION 6.8.4.2.</li> <li>3. Revegetation utilising koala food trees in accordance with Section 7.6 of the KPoM (JWA 2019).</li> <li>4. Secondary weed control/maintenance in accordance with SECTION 6.8.4.3.</li> </ol>
KC-010	Zone 4: Koala Compensatory Habitat	Wet Primary	5	<ol style="list-style-type: none"> <li>1. Peg boundaries.</li> </ol>

Kings Forest - Precincts 1 - 5 Vegetation & Weed Management Plan

ID	Management Zone	Sub-type	Precinct	Specific Vegetation Management Requirements
				<ol style="list-style-type: none"> <li>2. Primary weed control of very dense Slash pine wildings in accordance with SECTION 6.8.4.2.</li> <li>3. Revegetation utilising koala food trees in accordance with Section 7.6 of the KPOM (JWA 2019).</li> <li>4. Secondary weed control/maintenance in accordance with SECTION 6.8.4.3.</li> </ol>
KC-011	Zone 4: Koala Compensatory Habitat	Dry Primary	5	<ol style="list-style-type: none"> <li>1. Peg boundaries.</li> <li>2. Primary weed control of very dense Slash pine wildings in accordance with SECTION 6.8.4.2.</li> <li>3. Revegetation utilising koala food trees in accordance with Section 7.6 of the KPOM (JWA 2019).</li> <li>4. Secondary weed control/maintenance in accordance with SECTION 6.8.4.3.</li> </ol>
KC-012	Zone 4: Koala Compensatory Habitat	Dry Primary plus Dry Heath	5	<ol style="list-style-type: none"> <li>1. Peg boundaries.</li> <li>2. Primary weed control of very dense Slash pine wildings and mature Slash pine in accordance with SECTION 6.8.4.2.</li> <li>3. Revegetation utilising koala food trees in accordance with Section 7.6 of the KPOM (JWA 2019).</li> <li>4. Secondary weed control/maintenance in accordance with SECTION 6.8.4.3.</li> </ol>
KC-013	Zone 4: Koala Compensatory Habitat	Wet Secondary	5	<ol style="list-style-type: none"> <li>1. Primary weed control of mature Slash pine in accordance with SECTION 6.8.4.2.</li> <li>2. Revegetation utilising koala food trees in accordance with Section 7.6 of the KPOM (JWA 2019).</li> <li>3. Secondary weed control/maintenance in accordance with SECTION 6.8.4.3.</li> </ol>

Kings Forest - Precincts 1 - 5 Vegetation & Weed Management Plan

ID	Management Zone	Sub-type	Precinct	Specific Vegetation Management Requirements
KC-014	Zone 4: Koala Compensatory Habitat	Dry Primary plus Dry Heath	5	<ol style="list-style-type: none"> <li>1. Peg boundaries.</li> <li>2. Primary weed control of very dense Slash pine wildings in accordance with SECTION 6.8.4.2.</li> <li>3. Revegetation utilising koala food trees in accordance with Section 7.6 of the KPOM (JWA 2019).</li> <li>4. Secondary weed control/maintenance in accordance with SECTION 6.8.4.3.</li> </ol>
KC-015	Zone 4: Koala Compensatory Habitat	Wet Primary	5	<ol style="list-style-type: none"> <li>1. Peg boundaries.</li> <li>2. Primary weed control of very dense Slash pine wildings in accordance with SECTION 6.8.4.2.</li> <li>3. Revegetation utilising koala food trees in accordance with Section 7.6 of the KPOM (JWA 2019).</li> <li>4. Secondary weed control/maintenance in accordance with SECTION 6.8.4.3.</li> </ol>
KC-016	Zone 4: Koala Compensatory Habitat	Wet Primary plus Wet Heath	5	<ol style="list-style-type: none"> <li>1. Peg boundaries.</li> <li>2. Primary weed control of dense Slash pine wildings in accordance with SECTION 6.8.4.2.</li> <li>3. Revegetation utilising koala food trees in accordance with Section 7.6 of the KPOM (JWA 2019).</li> <li>4. Secondary weed control/maintenance in accordance with SECTION 6.8.4.3.</li> </ol>
KC-017	Zone 4: Koala Compensatory Habitat	Wet Primary	5	<ol style="list-style-type: none"> <li>1. Peg boundaries.</li> <li>2. Primary weed control of mature Slash pine in accordance with SECTION 6.8.4.2.</li> <li>3. Revegetation utilising koala food trees in accordance with Section 7.6 of the KPOM (JWA 2019).</li> <li>4. Secondary weed control/maintenance in accordance with SECTION 6.8.4.3.</li> </ol>

Kings Forest - Precincts 1 - 5 Vegetation & Weed Management Plan

ID	Management Zone	Sub-type	Precinct	Specific Vegetation Management Requirements
KC-018	Zone 4: Koala Compensatory Habitat	Dry Primary plus Dry Heath	5	<ol style="list-style-type: none"> <li>1. Peg boundaries.</li> <li>2. Primary weed control of dense Slash pine wildings in accordance with SECTION 6.8.4.2.</li> <li>3. Revegetation utilising koala food trees in accordance with Section 7.6 of the KPoM (JWA 2019).</li> <li>4. Secondary weed control/maintenance in accordance with SECTION 6.8.4.3.</li> </ol>
KC-019	Zone 4: Koala Compensatory Habitat	Wet Primary	5	<ol style="list-style-type: none"> <li>1. Peg boundaries.</li> <li>2. Primary weed control of scattered mature Slash pine and pasture grasses in accordance with SECTION 6.8.4.2.</li> <li>3. Revegetation utilising koala food trees in accordance with Section 7.6 of the KPoM (JWA 2019).</li> <li>4. Secondary weed control/maintenance in accordance with SECTION 6.8.4.3.</li> </ol>
KC-020	Zone 4: Koala Compensatory Habitat	Wet Primary	5	<ol style="list-style-type: none"> <li>1. Peg boundaries.</li> <li>2. Primary weed control of dense Slash pine wildings and pasture grasses in accordance with SECTION 6.8.4.2.</li> <li>3. Revegetation utilising koala food trees in accordance with Section 7.6 of the KPoM (JWA 2019).</li> <li>4. Secondary weed control/maintenance in accordance with SECTION 6.8.4.3.</li> </ol>
KC-021	Zone 4: Koala Compensatory Habitat	Wet Secondary	5	<ol style="list-style-type: none"> <li>1. Primary weed control of dense Slash pine wildings in accordance with SECTION 6.8.4.2.</li> <li>2. Revegetation utilising koala food trees in accordance with Section 7.6 of the KPoM (JWA 2019).</li> <li>3. Secondary weed control/maintenance in accordance with SECTION 6.8.4.3.</li> </ol>

ID	Management Zone	Sub-type	Precinct	Specific Vegetation Management Requirements
KC-022	Zone 4: Koala Compensatory Habitat	Dry Primary	5	<ol style="list-style-type: none"> <li>1. Peg boundaries.</li> <li>2. Primary weed control of pasture grasses in accordance with SECTION 6.8.4.2.</li> <li>3. Revegetation utilising koala food trees in accordance with Section 7.6 of the KPOM (JWA 2019).</li> <li>4. Secondary weed control/maintenance in accordance with SECTION 6.8.4.3.</li> </ol>
KC-023	Zone 4: Koala Compensatory Habitat	Dry Primary	5	<ol style="list-style-type: none"> <li>1. Primary weed control of dense Slash pine wildings in accordance with SECTION 6.8.4.2.</li> <li>2. Revegetation utilising koala food trees in accordance with Section 7.6 of the KPOM (JWA 2019).</li> <li>3. Secondary weed control/maintenance in accordance with SECTION 6.8.4.3.</li> </ol>
KC-024	Zone 4: Koala Compensatory Habitat	Wet Primary	5	<ol style="list-style-type: none"> <li>1. Peg boundaries.</li> <li>2. Primary weed control of dense Slash pine wildings and pasture grasses in accordance with SECTION 6.8.4.2.</li> <li>3. Revegetation utilising koala food trees in accordance with Section 7.6 of the KPOM (JWA 2019).</li> <li>4. Secondary weed control/maintenance in accordance with SECTION 6.8.4.3.</li> </ol>
KC-025	Zone 4: Koala Compensatory Habitat	Wet Primary	5	<ol style="list-style-type: none"> <li>1. Peg boundaries.</li> <li>2. Primary weed control of mature Slash pine and pasture grasses in accordance with SECTION 6.8.4.2.</li> <li>3. Revegetation utilising koala food trees in accordance with Section 7.6 of the KPOM (JWA 2019).</li> <li>4. Secondary weed control/maintenance in accordance with SECTION 6.8.4.3.</li> </ol>

Kings Forest - Precincts 1 - 5 Vegetation & Weed Management Plan

ID	Management Zone	Sub-type	Precinct	Specific Vegetation Management Requirements
KC-026	Zone 4: Koala Compensatory Habitat	Dry Primary	5	<ol style="list-style-type: none"> <li>1. Peg boundaries.</li> <li>2. Primary weed control of dense Slash pine wildings and pasture grasses in accordance with SECTION 6.8.4.2.</li> <li>3. Revegetation utilising koala food trees in accordance with Section 7.6 of the KPOM (JWA 2019).</li> <li>4. Secondary weed control/maintenance in accordance with SECTION 6.8.4.3.</li> </ol>
KC-027	Zone 4: Koala Compensatory Habitat	Wet Primary	5	<ol style="list-style-type: none"> <li>1. Peg boundaries.</li> <li>2. Primary weed control of mature Slash pine and pasture grasses in accordance with SECTION 6.8.4.2.</li> <li>3. Revegetation utilising koala food trees in accordance with Section 7.6 of the KPOM (JWA 2019).</li> <li>4. Secondary weed control/maintenance in accordance SECTION 6.8.4.3.</li> </ol>
KC-028	Zone 4: Koala Compensatory Habitat	Dry Primary	E-W Corridor	<ol style="list-style-type: none"> <li>1. Peg boundaries.</li> <li>2. Primary weed control of pasture grasses in accordance with SECTION 6.8.4.2.</li> <li>3. Revegetation utilising koala food trees in accordance with Section 7.6 of the KPOM (JWA 2019).</li> <li>4. Secondary weed control/maintenance in accordance with SECTION 6.8.4.3.</li> </ol>
KC-029	Zone 4: Koala Compensatory Habitat	Dry Primary	E-W Corridor	<ol style="list-style-type: none"> <li>1. Peg boundaries.</li> <li>2. Primary weed control of mature Slash pine and pasture grasses in accordance with SECTION 6.8.4.2.</li> <li>3. Revegetation utilising koala food trees in accordance with Section 7.6 of the KPOM (JWA 2019).</li> <li>4. Secondary weed control/maintenance in accordance with SECTION 6.8.4.3.</li> </ol>

ID	Management Zone	Sub-type	Precinct	Specific Vegetation Management Requirements
KC-030	Zone 4: Koala Compensatory Habitat	Wet Primary	E-W Corridor	<ol style="list-style-type: none"> <li>1. Peg boundaries.</li> <li>2. Primary weed control of mature Slash pine and pasture grasses in accordance with SECTION 6.8.4.2.</li> <li>3. Revegetation utilising koala food trees in accordance with Section 7.6 of the KPOM (JWA 2019).</li> <li>4. Secondary weed control/maintenance in accordance with SECTION 6.8.4.3.</li> </ol>
KC-031	Zone 4: Koala Compensatory Habitat	Dry Primary	E-W Corridor	<ol style="list-style-type: none"> <li>1. Peg boundaries.</li> <li>2. Primary weed control of mature Slash pine and pasture grasses in accordance with SECTION 6.8.4.2.</li> <li>3. Revegetation utilising koala food trees in accordance with Section 7.6 of the KPOM (JWA 2019).</li> <li>4. Secondary weed control/maintenance in accordance with SECTION 6.8.4.3.</li> </ol>
KC-032	Zone 4: Koala Compensatory Habitat	Wet Primary	4	<ol style="list-style-type: none"> <li>1. Primary weed control in accordance with SECTION 6.8.4.2.</li> <li>2. Revegetation utilising koala food trees in accordance with Section 7.6 of the KPOM (JWA 2019).</li> <li>3. Secondary weed control/maintenance in accordance with SECTION 6.8.4.3.</li> </ol>
WC-001	Zone 5: WSF Compensatory Habitat	Breeding Habitat - Wet Heath	5	<ol style="list-style-type: none"> <li>1. Peg boundaries.</li> <li>2. Primary weed control of exotic pasture grasses and scattered Slash pine wildings in accordance with SECTION 6.8.4.2.</li> <li>3. Monitor natural regeneration in accordance with SECTION 8.4.</li> <li>4. Secondary weed control/maintenance in accordance with SECTION 6.8.4.3.</li> <li>5. Infill planting/revegetation (if monitoring shows necessary) in accordance with SECTION 6.9.</li> </ol>

Kings Forest - Precincts 1 - 5 Vegetation & Weed Management Plan

ID	Management Zone	Sub-type	Precinct	Specific Vegetation Management Requirements
WC-002	Zone 5: WSF Compensatory Habitat	Forage Habitat - Dry Heath	5	<ol style="list-style-type: none"> <li>1. Peg boundaries.</li> <li>2. Primary weed control of scattered Slash pine wildings in accordance with SECTION 6.8.4.2.</li> <li>3. Revegetation in accordance with Section 7.8 of the WSFMP (JWA 2020a).</li> <li>4. Secondary weed control/maintenance in accordance with SECTION 6.8.4.3.</li> </ol>
WC-003	Zone 5: WSF Compensatory Habitat	Forage Habitat - Dry Heath	5	<ol style="list-style-type: none"> <li>1. Peg boundaries.</li> <li>2. Primary weed control of scattered Slash pine wildings in accordance with SECTION 6.8.4.2.</li> <li>3. Revegetation in accordance with Section 7.8 of the WSFMP (JWA 2020a).</li> <li>4. Secondary weed control/maintenance in accordance with SECTION 6.8.4.3.</li> </ol>
WC-004	Zone 5: WSF Compensatory Habitat	Forage Habitat - Dry Heath	5	<ol style="list-style-type: none"> <li>1. Peg boundaries.</li> <li>2. Primary weed control of scattered Slash pine wildings in accordance with SECTION 6.8.4.2.</li> <li>3. Revegetation in accordance with Section 7.8 of the WSFMP (JWA 2020a).</li> <li>4. Secondary weed control/maintenance in accordance with SECTION 6.8.4.3.</li> </ol>
WC-005	Zone 5: WSF Compensatory Habitat	Breeding Habitat - Sedgeland	5	<ol style="list-style-type: none"> <li>1. Peg boundaries.</li> <li>2. Primary weed control of mature Slash pine and scattered Slash pine wildings in accordance with SECTION 6.8.4.2.</li> <li>3. Revegetation in accordance with Section 7.8 of the WSFMP (JWA 2020a).</li> <li>4. Secondary weed control/maintenance in accordance with SECTION 6.8.4.3.</li> </ol>
WC-006	Zone 5: WSF Compensatory Habitat	Forage Habitat - Dry Heath	5	<ol style="list-style-type: none"> <li>1. Peg boundaries.</li> </ol>

Kings Forest - Precincts 1 - 5 Vegetation & Weed Management Plan

ID	Management Zone	Sub-type	Precinct	Specific Vegetation Management Requirements
				<ol style="list-style-type: none"> <li>2. Primary weed control of mature Slash pine and scattered Slash pine wildings in accordance with SECTION 6.8.4.2.</li> <li>3. Revegetation in accordance with Section 7.8 of the WSFMP (JWA 2020a).</li> <li>4. Secondary weed control/maintenance in accordance with SECTION 6.8.4.3.</li> </ol>
WC-007	Zone 5: WSF Compensatory Habitat	Breeding Habitat - Wet Heath	5	<ol style="list-style-type: none"> <li>1. Peg boundaries.</li> <li>2. Primary weed control of Slash pine wildings in accordance with SECTION 6.8.4.2.</li> <li>3. Revegetation in accordance with Section 7.8 of the WSFMP (JWA 2020a).</li> <li>4. Secondary weed control/maintenance in accordance with SECTION 6.8.4.3.</li> </ol>
WC-008	Zone 5: WSF Compensatory Habitat	Breeding Habitat - Sedgeland	5	<ol style="list-style-type: none"> <li>1. Peg boundaries.</li> <li>2. Primary weed control of Slash pine wildings in accordance with SECTION 6.8.4.2.</li> <li>3. Revegetation in accordance with Section 7.8 of the WSFMP (JWA 2020a).</li> <li>4. Secondary weed control/maintenance in accordance with SECTION 6.8.4.3.</li> </ol>
WC-009	Zone 5: WSF Compensatory Habitat	Breeding Habitat - Wet Heath	5	<ol style="list-style-type: none"> <li>1. Peg boundaries.</li> <li>2. Primary weed control of Slash pine wildings in accordance with SECTION 6.8.4.2.</li> <li>3. Revegetation in accordance with Section 7.8 of the WSFMP (JWA 2020a).</li> <li>4. Secondary weed control/maintenance in accordance with SECTION 6.8.4.3.</li> </ol>
WC-010	Zone 5: WSF Compensatory Habitat	Breeding Habitat - Wet Heath	5	<ol style="list-style-type: none"> <li>1. Peg boundaries.</li> <li>2. Primary weed control of Slash pine wildings in accordance with SECTION 6.8.4.2.</li> <li>3. Revegetation in accordance with Section 7.8 of the WSFMP (JWA 2020a).</li> <li>4. Secondary weed control/maintenance in accordance with SECTION 6.8.4.3.</li> </ol>
WC-011	Zone 5:	Breeding Habitat - Sedgeland	5	<ol style="list-style-type: none"> <li>1. Peg boundaries.</li> </ol>

Kings Forest - Precincts 1 - 5 Vegetation & Weed Management Plan

ID	Management Zone	Sub-type	Precinct	Specific Vegetation Management Requirements
	WSF Compensatory Habitat			<ol style="list-style-type: none"> <li>2. Primary weed control of Slash pine wildings and pasture grasses in accordance with SECTION 6.8.4.2.</li> <li>3. Revegetation in accordance with Section 7.8 of the WSFMP (JWA 2020a).</li> <li>4. Secondary weed control/maintenance in accordance with SECTION 6.8.4.3.</li> </ol>
WC-012	Zone 5: WSF Compensatory Habitat	Forage Habitat - Dry Heath	5	<ol style="list-style-type: none"> <li>1. Peg boundaries.</li> <li>2. Primary weed control of Slash pine wildings in accordance with SECTION 6.8.4.2.</li> <li>3. Revegetation in accordance with Section 7.8 of the WSFMP (JWA 2020a).</li> <li>4. Secondary weed control/maintenance in accordance with SECTION 6.8.4.3.</li> </ol>
WC-013	Zone 5: WSF Compensatory Habitat	Breeding Habitat - Wet Heath	5	<ol style="list-style-type: none"> <li>1. Peg boundaries.</li> <li>2. Primary weed control of Slash pine wildings in accordance with SECTION 6.8.4.2.</li> <li>3. Revegetation in accordance with Section 7.8 of the WSFMP (JWA 2020a).</li> <li>4. Secondary weed control/maintenance in accordance with SECTION 6.8.4.3.</li> </ol>
WC-014	Zone 5: WSF Compensatory Habitat	Breeding Habitat - Wet Heath	5	<ol style="list-style-type: none"> <li>1. Peg boundaries.</li> <li>2. Primary weed control of pasture grasses and Blackberry in accordance with SECTION 6.8.4.2.</li> <li>3. Revegetation in accordance with Section 7.8 of the WSFMP (JWA 2020a).</li> <li>4. Secondary weed control/maintenance in accordance with SECTION 6.8.4.3.</li> </ol>
WC-015	Zone 5: WSF Compensatory Habitat	Breeding Habitat - Wet Heath	5	<ol style="list-style-type: none"> <li>1. Primary weed control of scattered Slash pine wildings and pasture grasses in accordance with SECTION 6.8.4.2.</li> <li>2. Revegetation in accordance with Section 7.8 of the WSFMP (JWA 2020a).</li> <li>3. Secondary weed control/maintenance in accordance with SECTION 6.8.4.3.</li> </ol>
WC-016	Zone 5:	Breeding Habitat - Sedgeland	4	<ol style="list-style-type: none"> <li>1. Peg boundaries.</li> </ol>

ID	Management Zone	Sub-type	Precinct	Specific Vegetation Management Requirements
	WSF Compensatory Habitat			<ol style="list-style-type: none"> <li>2. Primary weed control of scattered Slash pine wildings and pasture grasses in accordance with SECTION 6.8.4.2.</li> <li>3. Revegetation in accordance with Section 7.8 of the WSFMP (JWA 2020a).</li> <li>4. Secondary weed control/maintenance in accordance with SECTION 6.8.4.3.</li> </ol>
WC-017	Zone 5: WSF Compensatory Habitat	Breeding Habitat - Sedgeland	4	<ol style="list-style-type: none"> <li>1. Peg boundaries.</li> <li>2. Primary weed control of scattered Slash pine wildings, Lantana, Camphor laurel and pasture grasses in accordance with SECTION 6.8.4.2.</li> <li>3. Revegetation in accordance with Section 7.8 of the WSFMP (JWA 2020a).</li> <li>4. Secondary weed control/maintenance in accordance with SECTION 6.8.4.3.</li> </ol>
WC-018	Zone 5: WSF Compensatory Habitat	Breeding Habitat - Wet Heath	5	<ol style="list-style-type: none"> <li>1. Peg boundaries.</li> <li>2. Primary weed control of mature Slash pine and pasture grasses in accordance with SECTION 6.8.4.2.</li> <li>3. Revegetation in accordance with Section 7.8 of the WSFMP (JWA 2020a).</li> <li>4. Secondary weed control/maintenance in accordance with SECTION 6.8.4.3.</li> </ol>
H-001	Zone 6: Heath Regeneration/Revegetation	Heath Regeneration - Dry Heath	2	<ol style="list-style-type: none"> <li>1. Peg boundaries.</li> <li>2. Monitor natural regeneration in accordance with the SECTION 8.4.</li> <li>3. Infill planting/revegetation with dry heath species (if monitoring shows necessary) in accordance with SECTION 6.9.</li> </ol>
H-002	Zone 6: Heath Regeneration/Revegetation	Heath Regeneration - Wet Heath	3	<ol style="list-style-type: none"> <li>1. Peg boundaries.</li> <li>2. Monitor natural regeneration in accordance with the SECTION 8.4.</li> <li>3. Infill planting/revegetation with wet heath species (if monitoring shows necessary) in accordance with SECTION 6.9.</li> </ol>

ID	Management Zone	Sub-type	Precinct	Specific Vegetation Management Requirements
H-003	Zone 6: Heath Regeneration/ Revegetation	Heath Revegetation - Dry Heath	3	<ol style="list-style-type: none"> <li>1. Peg boundaries.</li> <li>2. Primary weed control of pasture grasses in accordance with SECTION 6.8.4.2.</li> <li>3. Revegetation utilising with dry heath species in accordance with SECTION 6.9.</li> <li>4. Secondary weed control/maintenance in accordance with SECTION 6.8.4.3.</li> </ol>
H-004	Zone 6: Heath Regeneration/ Revegetation	Heath Regeneration - Dry Heath	5	<ol style="list-style-type: none"> <li>1. Peg boundaries.</li> <li>2. Primary weed control of mature Slash pine and scattered Slash pine wildings in accordance with SECTION 6.8.4.2.</li> <li>3. Monitor natural regeneration in accordance with the SECTION 8.4.</li> <li>4. Secondary weed control/maintenance in accordance with SECTION 6.8.4.3.</li> <li>5. Infill planting/revegetation within cleared/highly disturbed land (if monitoring shows necessary) in accordance with SECTION 6.9.</li> </ol>
H-005	Zone 6: Heath Regeneration/ Revegetation	Heath Regeneration - Dry Heath	5	<ol style="list-style-type: none"> <li>1. Peg boundaries.</li> <li>2. Primary weed control of mature Slash pine and scattered Slash pine wildings in accordance with SECTION 6.8.4.2.</li> <li>3. Monitor natural regeneration in accordance with the SECTION 8.4.</li> <li>4. Secondary weed control/maintenance in accordance with SECTION 6.8.4.3.</li> <li>5. Infill planting/revegetation within cleared/highly disturbed land (if monitoring shows necessary) in accordance with SECTION 6.9.</li> </ol>
H-006	Zone 6: Heath Regeneration/ Revegetation	Heath Regeneration - Dry Heath	5	<ol style="list-style-type: none"> <li>1. Peg boundaries.</li> <li>2. Primary weed control of scattered Slash pine wildings in accordance with SECTION 6.8.4.2.</li> <li>3. Monitor natural regeneration in accordance with the SECTION 8.4.</li> <li>4. Secondary weed control/maintenance in accordance with SECTION 6.8.4.3.</li> </ol>

Kings Forest - Precincts 1 - 5 Vegetation & Weed Management Plan

ID	Management Zone	Sub-type	Precinct	Specific Vegetation Management Requirements
				5. Infill planting/revegetation within cleared/highly disturbed land (if monitoring shows necessary) in accordance with SECTION 6.9.
H-007	6: Heath Regeneration/Revegetation	Heath Regeneration - Dry Heath	5	<ol style="list-style-type: none"> <li>1. Peg boundaries.</li> <li>2. Primary weed control of scattered Slash pine wildings in accordance with SECTION 6.8.4.2.</li> <li>3. Monitor natural regeneration in accordance with the SECTION 8.4.</li> <li>4. Secondary weed control/maintenance in accordance with SECTION 6.8.4.3.</li> <li>5. Infill planting/revegetation within cleared/highly disturbed land (if monitoring shows necessary) in accordance with SECTION 6.9.</li> </ol>
H-008	6: Heath Regeneration/Revegetation	Heath Regeneration - Dry Heath	5	<ol style="list-style-type: none"> <li>1. Peg boundaries.</li> <li>2. Primary weed control of scattered Slash pine wildings in accordance with SECTION 6.8.4.2.</li> <li>3. Monitor natural regeneration in accordance with the SECTION 8.4.</li> <li>4. Secondary weed control/maintenance in accordance with SECTION 6.8.4.3.</li> <li>5. Infill planting/revegetation within cleared/highly disturbed land (if monitoring shows necessary) in accordance with SECTION 6.9.</li> </ol>
H-009	Zone 6: Heath Regeneration/Revegetation	Heath Regeneration - Dry Heath	5	<ol style="list-style-type: none"> <li>1. Peg boundaries.</li> <li>2. Primary weed control of scattered Slash pine wildings in accordance with SECTION 6.8.4.2.</li> <li>3. Monitor natural regeneration in accordance with the SECTION 8.4.</li> <li>4. Secondary weed control/maintenance in accordance with SECTION 6.8.4.3.</li> <li>5. Infill planting/revegetation within cleared/highly disturbed land (if monitoring shows necessary) in accordance with SECTION 6.9.</li> </ol>

Kings Forest - Precincts 1 - 5 Vegetation & Weed Management Plan

ID	Management Zone	Sub-type	Precinct	Specific Vegetation Management Requirements
H-010	Zone 6: Heath Regeneration/ Revegetation	Heath Revegetation - Dry Heath	5	<ol style="list-style-type: none"> <li>1. Peg boundaries.</li> <li>2. Primary weed control of pasture grasses in accordance with SECTION 6.8.4.2.</li> <li>6. Revegetation utilising with dry heath species in accordance with SECTION 6.9 and including re-use of topsoil (where appropriate) in accordance with SECTION 6.6.</li> <li>3. Secondary weed control/maintenance in accordance with SECTION 6.8.4.3.</li> </ol>
H-011	Zone 6: Heath Regeneration/ Revegetation	Heath Revegetation - Dry Heath	5	<ol style="list-style-type: none"> <li>1. Peg boundaries.</li> <li>2. Primary weed control of pasture grasses in accordance with SECTION 6.8.4.2.</li> <li>3. Revegetation utilising with dry heath species in accordance with SECTION 6.9.</li> <li>4. Secondary weed control/maintenance in accordance with SECTION 6.8.4.3.</li> </ol>
H-012	Zone 6: Heath Regeneration/ Revegetation	Heath Regeneration - Wet Heath	5	<ol style="list-style-type: none"> <li>1. Monitor natural regeneration in accordance with the SECTION 8.4.</li> <li>2. Infill planting/revegetation with wet heath species (if monitoring shows necessary) in accordance with SECTION 6.9.</li> </ol>
H-013	Zone 6: Heath Regeneration/ Revegetation	Heath Regeneration - Dry Heath	4	<ol style="list-style-type: none"> <li>1. Peg boundaries.</li> <li>2. Primary weed control of pasture grasses in accordance with SECTION 6.8.4.2.</li> <li>3. Monitor natural regeneration in accordance with the SECTION 8.4.</li> <li>4. Secondary weed control/maintenance in accordance with SECTION 6.8.4.3.</li> <li>5. Infill planting/revegetation within cleared/highly disturbed land (if monitoring shows necessary) in accordance with SECTION 6.9.</li> </ol>
H-014	Zone 6: Heath Regeneration/ Revegetation	Heath Revegetation - Dry Heath	4	<ol style="list-style-type: none"> <li>1. Peg boundaries.</li> <li>2. Primary weed control of Slash pine in accordance with SECTION 6.8.4.2.</li> <li>3. Revegetation utilising with dry heath species in accordance with SECTION 6.9 and including re-use of topsoil (where appropriate) in accordance with SECTION 6.6.</li> </ol>

Kings Forest - Precincts 1 - 5 Vegetation & Weed Management Plan

ID	Management Zone	Sub-type	Precinct	Specific Vegetation Management Requirements
				4. Secondary weed control/maintenance in accordance with SECTION 6.8.4.3.
H-015	Zone 6: Heath Regeneration/ Revegetation	Heath Revegetation - Dry Heath	4	<ol style="list-style-type: none"> <li>1. Peg boundaries.</li> <li>2. Primary weed control of Slash pine in accordance with SECTION 6.8.4.2.</li> <li>3. Revegetation utilising with dry heath species in accordance with SECTION 6.9 and including re-use of topsoil (where appropriate) in accordance with SECTION 6.6.</li> <li>4. Secondary weed control/maintenance in accordance with SECTION 6.8.4.3.</li> </ol>
LR-1	Zone 7: Littoral Rainforest Regeneration/ Revegetation	Revegetation	1	<ol style="list-style-type: none"> <li>1. Peg boundaries.</li> <li>2. Primary weed control of pasture grasses in accordance with SECTION 6.8.4.2.</li> <li>3. Revegetation with Littoral rainforest species in accordance with SECTION 6.9.</li> <li>4. Secondary weed control/maintenance in accordance with SECTION 6.8.4.3.</li> </ol>
LR-2	Zone 7: Littoral Rainforest Regeneration/ Revegetation	Regeneration	1	<ol style="list-style-type: none"> <li>1. Peg boundaries.</li> <li>2. Primary weed control of Lantana, Winter senna, Ochna, Bitou bush and pasture grasses along Tweed Coast Road in accordance with SECTION 6.8.4.2.</li> <li>3. Monitor natural regeneration in accordance with the SECTION 8.4.</li> <li>4. Secondary weed control/maintenance in accordance with SECTION 6.8.4.3.</li> <li>5. Infill planting/revegetation (if monitoring shows necessary) in accordance with SECTION 6.9.</li> </ol>
LR-3	Zone 7: Littoral Rainforest Regeneration/ Revegetation	Revegetation	1	<ol style="list-style-type: none"> <li>1. Peg boundaries.</li> <li>2. Primary weed control of pasture grasses in accordance with SECTION 6.8.4.2.</li> <li>3. Revegetation with Littoral rainforest species in accordance with SECTION 6.9.</li> <li>4. Secondary weed control/maintenance in accordance with SECTION 6.8.4.3.</li> </ol>

Kings Forest - Precincts 1 - 5 Vegetation & Weed Management Plan

ID	Management Zone	Sub-type	Precinct	Specific Vegetation Management Requirements
W-001	Zone 8: Wetland Regeneration	N/A	5	<ol style="list-style-type: none"> <li>1. Monitor natural regeneration in accordance with the SECTION 8.4.</li> <li>2. Infill planting/revegetation with wetland species (if monitoring shows necessary) in accordance with SECTION 6.9.</li> </ol>
W-002	Zone 8: Wetland Regeneration	N/A	5	<ol style="list-style-type: none"> <li>1. Monitor natural regeneration in accordance with the SECTION 8.4.</li> <li>2. Infill planting/revegetation with wetland species (if monitoring shows necessary) in accordance with SECTION 6.9.</li> </ol>
W-003	Zone 8: Wetland Regeneration	N/A	5	<ol style="list-style-type: none"> <li>1. Monitor natural regeneration in accordance with the SECTION 8.4.</li> <li>2. Infill planting/revegetation with wetland species (if monitoring shows necessary) in accordance with SECTION 6.9.</li> </ol>
W-004	Zone 8: Wetland Regeneration	N/A	5	<ol style="list-style-type: none"> <li>1. Monitor natural regeneration in accordance with the SECTION 8.4.</li> <li>2. Infill planting/revegetation with wetland species (if monitoring shows necessary) in accordance with SECTION 6.9.</li> </ol>
W-005	Zone 8: Wetland Regeneration	N/A	5	<ol style="list-style-type: none"> <li>1. Monitor natural regeneration in accordance with the SECTION 8.4.</li> <li>2. Infill planting/revegetation with wetland species (if monitoring shows necessary) in accordance with SECTION 6.9.</li> </ol>
W-006	Zone 8: Wetland Regeneration	N/A	5	<ol style="list-style-type: none"> <li>1. Primary weed control of pasture grasses in accordance with SECTION 6.8.4.2.</li> <li>2. Monitor natural regeneration in accordance with the SECTION 8.4.</li> <li>3. Secondary weed control/maintenance in accordance with SECTION 6.8.4.3.</li> <li>4. Infill planting/revegetation with wetland species (if monitoring shows necessary) in accordance with SECTION 6.9.</li> </ol>
W-007	Zone 8: Wetland Regeneration	N/A	5	<ol style="list-style-type: none"> <li>1. Primary weed control of pasture grasses in accordance with SECTION 6.8.4.2.</li> <li>2. Monitor natural regeneration in accordance with the SECTION 8.4.</li> </ol>

Kings Forest - Precincts 1 - 5 Vegetation & Weed Management Plan

ID	Management Zone	Sub-type	Precinct	Specific Vegetation Management Requirements
				3. Secondary weed control/maintenance in accordance with SECTION 6.8.4.3. 4. Infill planting/revegetation with wetland species (if monitoring shows necessary) in accordance with SECTION 6.9.

## APPENDIX 7 - BASELINE DATA PROFORMA

Work Area Number:	Date:			
Climatic Condition:				
Vegetation type:				
<input type="checkbox"/> Rainforest	<input type="checkbox"/> Sclerophyll Forest	<input type="checkbox"/> Wetland		
<input type="checkbox"/> Woodland	<input type="checkbox"/> Heath	<input type="checkbox"/> Riparian Veg		
Native Regeneration Scoring at Time of Assessment:				
<input type="checkbox"/> Negligible	<input type="checkbox"/> Poor	<input type="checkbox"/> Moderate	<input type="checkbox"/> Good	<input type="checkbox"/> Exceptional

NATIVE PLANT SPECIES LIST			
<i>Details of native plant species present and their abundance within the work area</i>			
Stratum	Native Plants		Abundance
	Common Name	Scientific Name	
Lower			
Mid			
Upper			

THREATENED PLANT SPECIES/ENDANGERED ECOLOGICAL COMMUNITIES LIST		
<i>List of threatened plant species/Endangered Ecological Communities found at the work area</i>		
Species and Conservation Status	Number of Plants	Management Implications
Endangered Ecological Community	Management Implications	

HABITAT FEATURES	
Fauna observed: <i>e.g. Turkey mound present on site.</i>	
Fauna habitat features present on site:	
<input type="checkbox"/> Hollows in trees <input type="checkbox"/> Mature or over-mature trees <input type="checkbox"/> Dead standing trees <input type="checkbox"/> Rocks and boulders <input type="checkbox"/> Fallen logs <input type="checkbox"/> Caves, mineshafts or overhangs <input type="checkbox"/> Springs <input type="checkbox"/> Lagoons <input type="checkbox"/> Pools <input type="checkbox"/> Watercourses / gullies <input type="checkbox"/> Riparian areas	<input type="checkbox"/> Wet or damp areas (including soaks / springs) <input type="checkbox"/> Leaf litter <input type="checkbox"/> Native grasses, rushes and sedges <input type="checkbox"/> Fleshy fruited trees and shrubs <input type="checkbox"/> Nectar bearing trees and shrubs <input type="checkbox"/> Dense understorey shrubs <input type="checkbox"/> Prickly understorey shrubs <input type="checkbox"/> Seasonal cracks in the soil <input type="checkbox"/> Other (please specify):
Comments:	

<b>ENVIRONMENTAL WEED SPECIES LIST</b>			
<i>Details of weed species present and their abundance within the work area</i>			
<b>Stratum</b>	<b>Major Environmental Weeds</b>		<b>Percentage Cover %</b>
	<b>Common Name</b>	<b>Scientific Name</b>	
<b>Lower</b>			
<b>Mid</b>			
<b>Upper</b>			

OTHER THREATS OR IMPACTS			
Feral Animal Presence:	Area of Most Disturbance	Impact	Management Implications
<i>EXAMPLE: Cane Toad</i>	<i>Open disturbed area</i>	<i>On native fauna</i>	<i>Monitor presence</i>
Possible Negative Impacts	Impact	Management Implications	
<i>EXAMPLE: Stock intrusion</i>	<i>On regenerating native plants</i>	<i>Stock intrusion is unlikely, however if evidence of significant negative impact of regenerating native vegetation is detected, then fencing of stock may be required.</i>	
<i>EXAMPLE: Herbicide drift</i>	<i>On threatened XXXX plant and on native plants</i>	<i>Use of herbicides to control weeds around the threatened plants will have to be done with utmost care and only by experienced bush regenerators. In any case weed control using herbicides must comply with current Best Management Practice</i>	

ENVIRONMENTAL RESTORATION ISSUES	
<b>Weaknesses</b>	
<i>EXAMPLES: Exposed, no canopy, high light. Copious weed regeneration following disturbance. Sloping site difficult to work in. XXX threatened species present in abundance.</i>	
<b>Strengths</b>	
<i>EXAMPLES: Good seed source for native recruitment. Some native regeneration occurring.</i>	
<b>Restoration Objectives for Work Area</b>	
<i>EXAMPLE: To undertake all enhancement plantings and the first stage weed control program by the release of the subdivision certificate, and to achieve an 80% native species canopy cover in all areas by November 2009.</i>	

## APPENDIX 8 - DAILY WORK RECORD PROFORMAS

This form is to be filled by the team leader for each workday. The team leader will need to allow 15 minutes each day to gather any relevant information for team members and to fill in this form.

Name of Team Leader:		Date:		
Vegetation Type:		Site Number:		
Weather Conditions:				
Specific Work Zone/s:				
Work Team Details				
Name	Zone No	Time Started	Time Finished	Hours Worked
Total No of Workers:		Total No of Hours:		

Description of Work Undertaken							
<i>(e.g. spraying, hand weeding, replanting, etc.). Mark work progress on project map.</i>							
Weed Control Undertaken	Weed Species	Material Used (tools/machinery)	Chemical Application (type/ratio/volume)	Zone No(s)	Area Worked (m <sup>2</sup> )	No of People	Total Hours Worked
Spraying							
Tree injections							
Cut and paint							
Hand weeding							
Other (specify)							
Replanting Undertaken	Material Used (tools/machinery)	Fertilizer, Mulch, Tree Protection Used (type/ratio/volume)	Zone No(s)	No trees Planted	No of People	Total Hours Worked	
Fencing Undertaken	Type of Fence	Material Used (tools/machinery)	Zone No(s)	Km of Fence	No of People	Total Hours Worked	
Other Work (describe activity)	Material Used (tools/machinery)	Zone No(s)	Quantity	No of People	Total Hours Worked		

**Observations:**

New native species or native species not previously recorded in work zone (please note date and zone no):

Name and date of any native plant species in flower or fruit, sudden and abundant regeneration of a particular species, or other relevant observations:

New weed species or weed species not previously recorded in work zone (please note date and zone no):

Any animal sightings (please indicate if by visual identification, called, nests, footprints, scats, clawmarks, shed skin, diggings, smell, feeding etc.):

**Blank Project Map:**

Use map to indicate work undertaken for each day (e.g. hatching weed control progress).

Signature:

### Chemical Operators Data Sheet

This form is to be filled by the team leader for each workday. The team leader will need to allow 15 minutes each day to gather any relevant information for team members and to fill in this form.

<b>Location:</b>	<b>Date:</b>	<b>Time:</b>
<b>Operators:</b>		

Herbicide	Batch No	Dilution Rate	Total	Operator	Equipment
<b>Glyphosate:</b>					
<input type="checkbox"/> RoundupBioactive®					
<input type="checkbox"/> Weedmaster Duo®					
<b>Metsulfuron Methyl:</b>					
<input type="checkbox"/> Brushkiller®					
<input type="checkbox"/> Brushhoff®					
<b>Glyphosate PLUS Metsulfuron Methyl:</b>					
<input type="checkbox"/> RoundupBioactive®					
<input type="checkbox"/> Weedmaster Duo®					
<input type="checkbox"/> Brushhoff®					
<b>Triclopyr &amp; Picloram:</b>					
<input type="checkbox"/> Grazon®					
<input type="checkbox"/> Tordon T/C®					
<b>Marker Dye:</b>					
<input type="checkbox"/> White field marker					
<input type="checkbox"/> Red marker					
<input type="checkbox"/> Other					
<b>Additive:</b>					
<input type="checkbox"/> LI 700®					
<input type="checkbox"/> Agral®					
<b>Other:</b>					

Growing Conditions	Temperature	Weather Conditions	Wind Strength	Wind Direction
<input type="checkbox"/> Very Good	<input type="checkbox"/> Cool <20°	<input type="checkbox"/> Showers	<input type="checkbox"/> Strong	
<input type="checkbox"/> Good	<input type="checkbox"/> Warm 21° - 25°	<input type="checkbox"/> Overcast	<input type="checkbox"/> Gusty	
<input type="checkbox"/> Poor	<input type="checkbox"/> V/Warm 26° - 30°	<input type="checkbox"/> Clear Sky	<input type="checkbox"/> Light	
<input type="checkbox"/> Very Poor	<input type="checkbox"/> Hot >30°	<input type="checkbox"/> Variable	<input type="checkbox"/> Calm	

<b>Zone/Area:</b>
<b>Comments:</b>

<b>Signature:</b>
-------------------