



- LEGEND**
- Heath to be Naturally Regenerated
 - Heath to be Revegetated
 - Wallum Sedge Frog Compensatory Habitat
 - Koala Food Tree Planting Areas
 - Ecological Buffer (50m)
 - Inner APZ (30m)
 - Extent of Bulk Earthworks
 - Kings Forest Boundary

NSW GOVERNMENT
 Planning

Issued under the Environmental Planning and Assessment Act 1979

Approved Section 75W Modification Application
 No. MOD 2 granted on the 11/8/13

in respect to MP 06-0318

Signed [Signature]

Sheet No. 18 of 24



SOURCE: JWA Site Investigations; Near Map June 2011 Aerial Photo; LandPartner's 2007 Aerial Photo SCALE: 1 : 4000 @ A3	CLIENT Project 28 Pty Ltd PROJECT Kings Forest Stage 1 Project Application Precinct 1 & 5 - Buffer Management Plan Melaleuca Drive, Duranbah, NSW Shire of Tweed	FIGURE 10G	TITLE PROPOSED COMPENSATORY HABITAT
JAMES WARREN & ASSOCIATES PTY LIMITED Environmental Consultants	PREPARED: BW DATE: 15 October 2012 FILE: N97017_BMP_Base.dwg		



- LEGEND**
-  Heath to be Naturally Regenerated
 -  Heath to be Revegetated
 -  Wallum Sedge Frog Compensatory Habitat
 -  Koala Food Tree Planting Areas
 -  Ecological Buffer (50m)
 -  Inner APZ (30m)
 -  Extent of Bulk Earthworks
 -  Kings Forest Boundary



NSW GOVERNMENT
Planning

Issued under the Environmental Planning and Assessment Act 1979

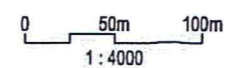
Approved Section 75W Modification Application

No. MOD 2 granted on the 11/8/13

in respect to MP 06-0318

Signed [Signature]

Sheet No. 19 of 24

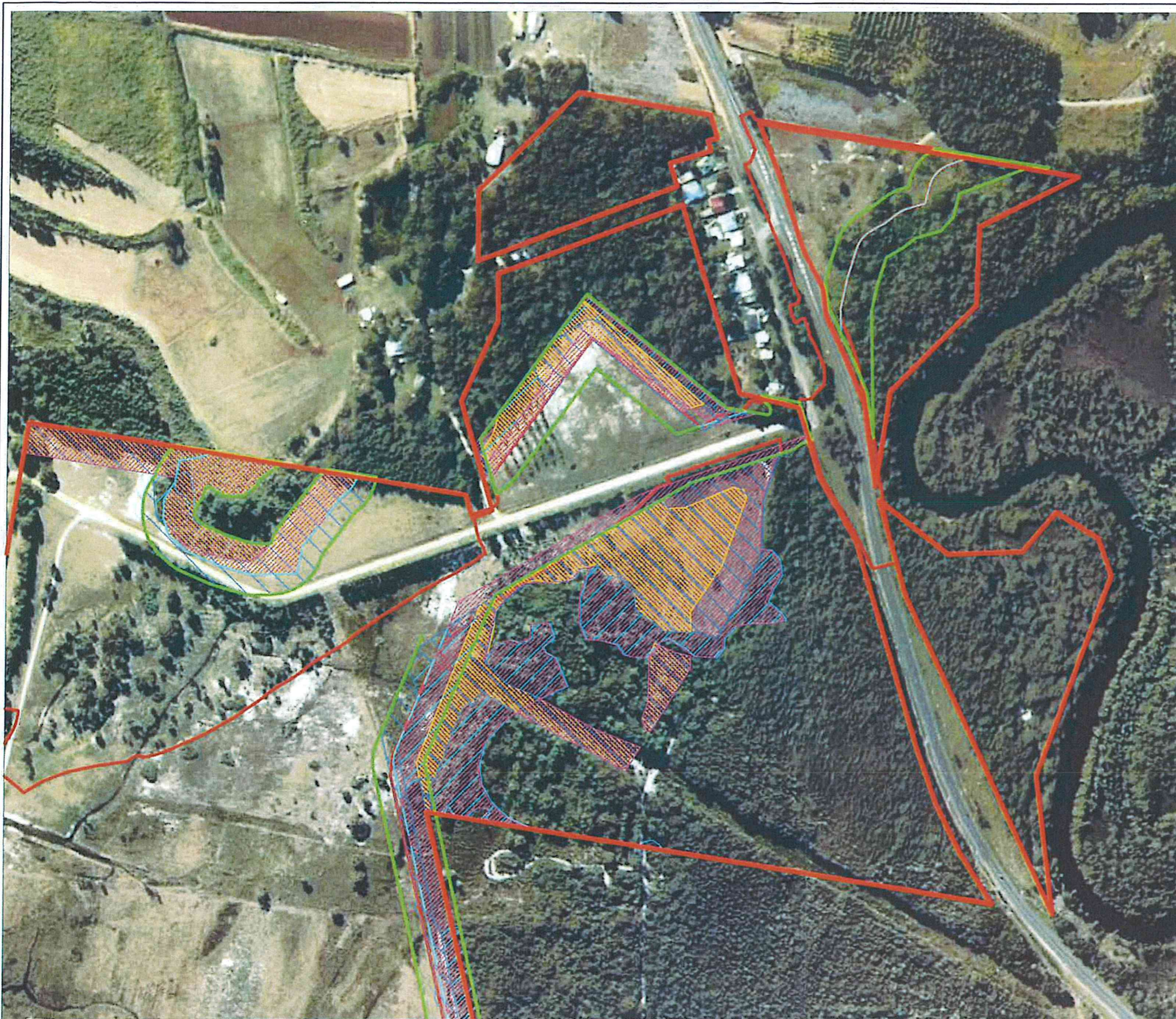


SOURCE: JWA Site Investigations; Near Map June 2011 Aerial Photo; LandPartner's 2007 Aerial Photo
SCALE: 1:4000 @ A3
JAMES WARREN & ASSOCIATES PTY LIMITED
Environmental Consultants

CLIENT
Project 28 Pty Ltd
PROJECT
Kings Forest Stage 1 Project Application
Precinct 1 & 5 - Buffer Management Plan
Melaleuca Drive, Duranbah, NSW
Shire of Tweed

FIGURE 10H
PREPARED: BW
DATE: 15 October 2012
FILE: N97017_BMP_Base.dwg

TITLE
**PROPOSED
COMPENSATORY
HABITAT**



LEGEND

- Heath to be Naturally Regenerated
- Heath to be Revegetated
- Wallum Sedge Frog Compensatory Habitat
- Koala Food Tree Planting Areas
- Ecological Buffer (50m)
- Inner APZ (30m)
- Extent of Bulk Earthworks
- Kings Forest Boundary



NSW GOVERNMENT
Planning

Issued under the Environmental Planning and Assessment Act 1979

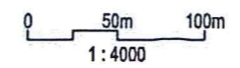
Approved Section 75W Modification Application

No. MOD 2 granted on the 11/8/13

in respect to MP 06-0318

Signed [Signature]

Sheet No. 20 of 24

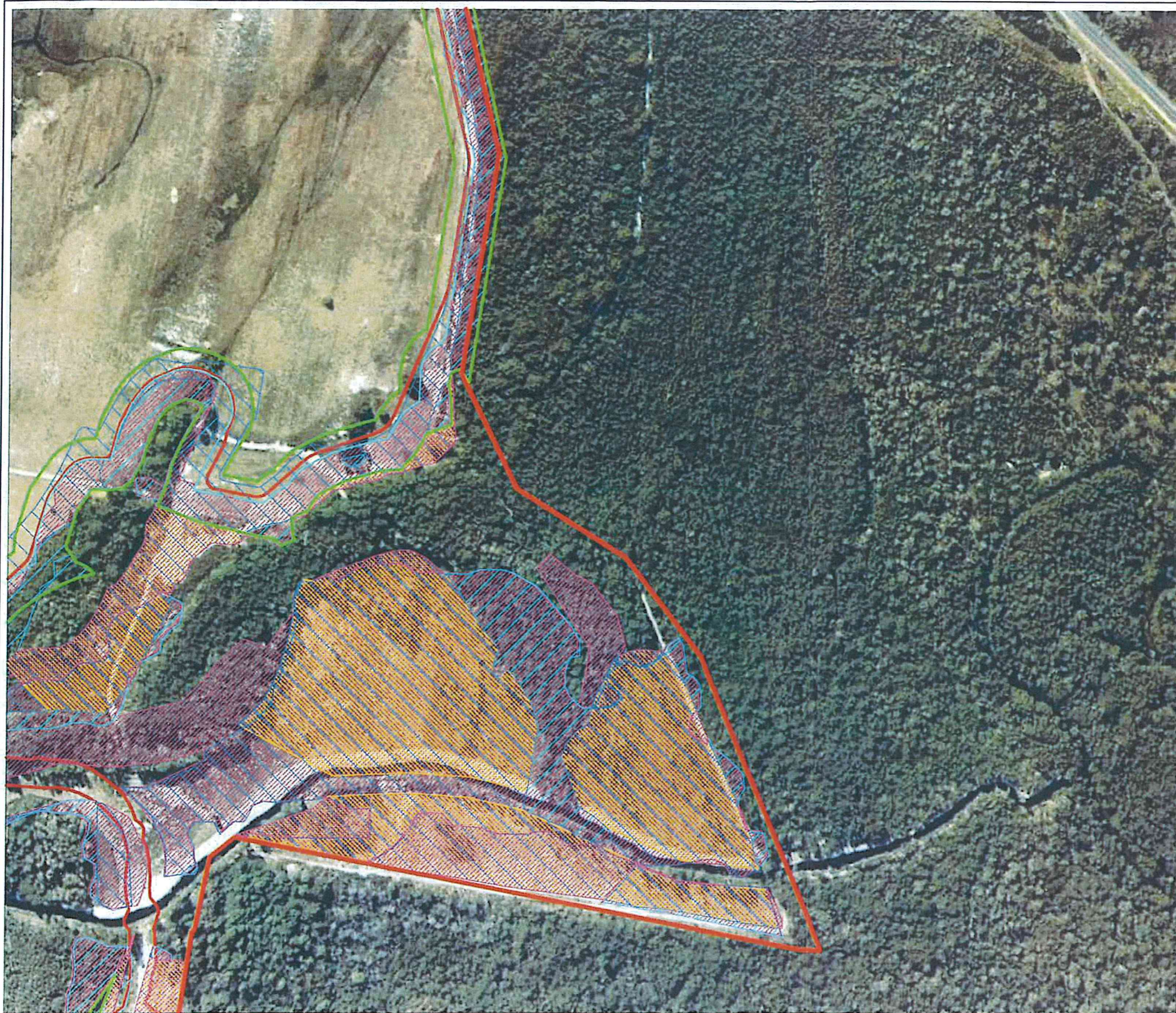


SOURCE: JWA Site Investigations; Near Map
June 2011 Aerial Photo; LandPartner's 2007
Aerial Photo
SCALE: 1:4000 @ A3
JAMES WARREN & ASSOCIATES PTY LIMITED
Environmental Consultants

CLIENT
Project 28 Pty Ltd
PROJECT
Kings Forest Stage 1 Project Application
Precinct 1 & 5 - Buffer Management Plan
Melaleuca Drive, Duranbah, NSW
Shire of Tweed

FIGURE 101
PREPARED: BW
DATE: 15 October 2012
FILE: N97017_BMP_Base.dwg

TITLE
**PROPOSED
COMPENSATORY
HABITAT**



LEGEND

- Heath to be Naturally Regenerated
- Heath to be Revegetated
- Wallum Sedge Frog Compensatory Habitat
- Koala Food Tree Planting Areas
- Ecological Buffer (50m)
- Inner APZ (30m)
- Extent of Bulk Earthworks
- Kings Forest Boundary



NSW GOVERNMENT
Planning

Issued under the Environmental Planning and Assessment Act 1979

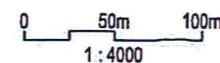
Approved Section 75W Modification Application

No. MOD 2 granted on the 11/8/13

in respect to MP 06-0318

Signed [Signature]

Sheet No. 21 of 24



SOURCE: JWA Site Investigations; Near Map
June 2011 Aerial Photo; LandPartner's 2007
Aerial Photo

SCALE: 1:4000 @ A3

JAMES WARREN & ASSOCIATES PTY LIMITED
Environmental Consultants

CLIENT
Project 28 Pty Ltd

PROJECT
Kings Forest Stage 1 Project Application
Precinct 1 & 5 - Buffer Management Plan
Melaleuca Drive, Duranbah, NSW
Shire of Tweed

FIGURE 10J

PREPARED: BW
DATE: 15 October 2012
FILE: N97017_BMP_Base.dwg

TITLE

PROPOSED
COMPENSATORY
HABITAT