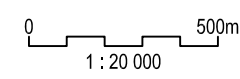


**LEGEND**

- Community 1 - Highly Modified**
- 1(a) Substantially cleared of native vegetation
  - 1(b) Camphor laurel dominant closed forest (with rainforest species)
  - 1(c) Native plantation/plantings
  - 1(d) *Leptospermum petersonii* plantation (with heathland species)
  - 1(e) Exotic pine plantation/pine wildings
  - 1(f) Exotic grassland dominated (with heathland species)
  - 1(g) Exotic grassland dominated (with regrowth *Acacia* & other native species)
- Community 2 - Freshwater Wetland**
- 2(a) Hillside seepage swamp (with *Eleocharis tetraquetra*)
  - 2(b) Ponds & fringing wetland
  - 2(c) Sedgeland/rushland
- Community 3 - Heathland & Shrubland**
- 3(a) Dry coastal heathland to shrubland
  - 3(b) Wet coastal heathland to shrubland
  - 3(c) Mixed wet/dry coastal heathland to shrubland (with Scribbly gum)
  - 3(d) Regenerating wet/dry coastal heathland to shrubland
  - 3(e) Regenerating wet/dry coastal heathland to shrubland (with exotic pines)
- Community 4 - Swamp Sclerophyll Floodplain Forest**
- 4(a) Forest red gum open forest to woodland/Broad-leaved paperbark closed forest to woodland
  - 4(b) Swamp mahogany open forest to woodland & heathland species
  - 4(c) Scribbly gum/Swamp mahogany open forest to woodland
  - 4(d) Swamp box open forest to woodland
  - 4(e) Broad-leaved paperbark closed forest to woodland
  - 4(f) Broad-leaved paperbark closed forest to woodland (with Scribbly gum)
  - 4(g) Broad-leaved paperbark closed forest to woodland (with rainforest species)
  - 4(h) Broad-leaved paperbark closed forest to woodland/Swamp mahogany open forest to woodland
  - 4(i) Swamp sclerophyll & heathland species (with exotic pines)
  - 4(j) Regenerating Broad-leaved paperbark closed forest to woodland & heathland species
  - 4(k) Regenerating Swamp mahogany open forest to woodland
- Community 5 - Dry to Moist Open Forest**
- 5(a) Blackbutt wet to dry open forest
  - 5(b) Blackbutt/Tallowwood open forest
  - 5(c) Blackbutt with grassy understorey
  - 5(d) Scribbly gum open forest to woodland
  - 5(e) Regenerating Scribbly gum open forest to woodland & heathland species
- Community 6 - Rainforest**
- 6(a) Littoral rainforest
  - 6(b) Regenerating sub-tropical rainforest
  - Open water
  - Kings Forest Boundary

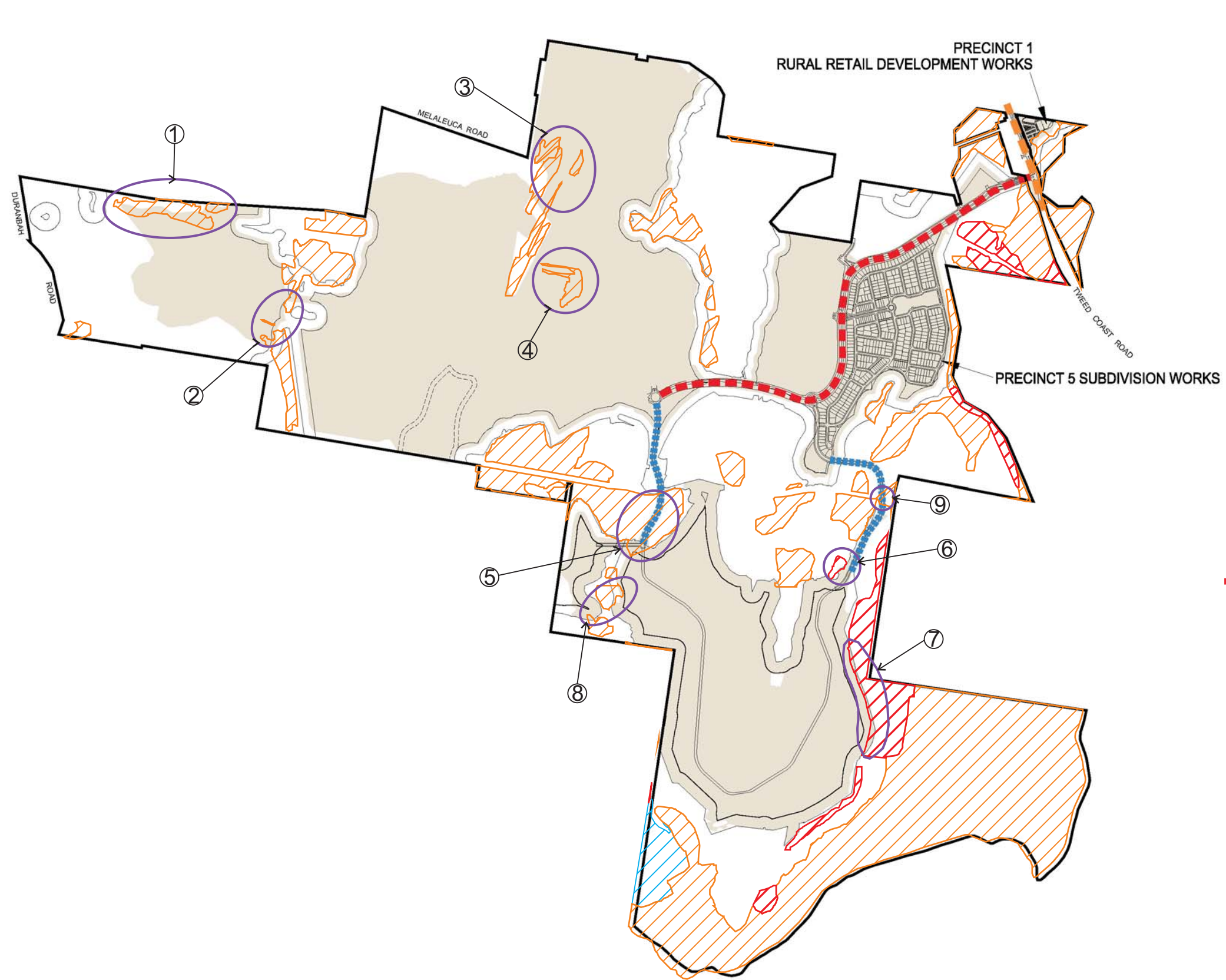


SOURCE: JWA Site Investigations;  
Landpartners - AKF 2005 Vegetation Mapping;  
2011 Near Map Aerial Photograph  
SCALE: 1 : 20 000 @ A3  
JAMES WARREN & ASSOCIATES PTY LIMITED  
Environmental Consultants

CLIENT  
Project 28 Pty Ltd  
PROJECT  
Response to Koala Submissions  
Kings Forest Estate  
Melaleuca Drive, Duranbah, NSW  
Shire of Tweed

APPENDIX 1  
FIGURE 1  
PREPARED: BW  
DATE: 23 August 2012  
FILE: N97017\_Base.dwg

TITLE  
VEGETATION  
COMMUNITIES



**LEGEND**

- Tweed Coast Road Intersection Works
- Kings Forest Parkway through to Western Precincts
- Roads through to Southern Precincts
- Indicative Bulk Earthworks Location (Refer to detailed engineering design by Mortons Urban Solutions)
- Primary Koala Habitat (0ha to be lost)
- Secondary (A) Koala Habitat (6.68ha to be lost)
- Secondary (B) Koala Habitat (0ha to be lost)
- Ⓝ Survey Sites
- Kings Forest Boundary

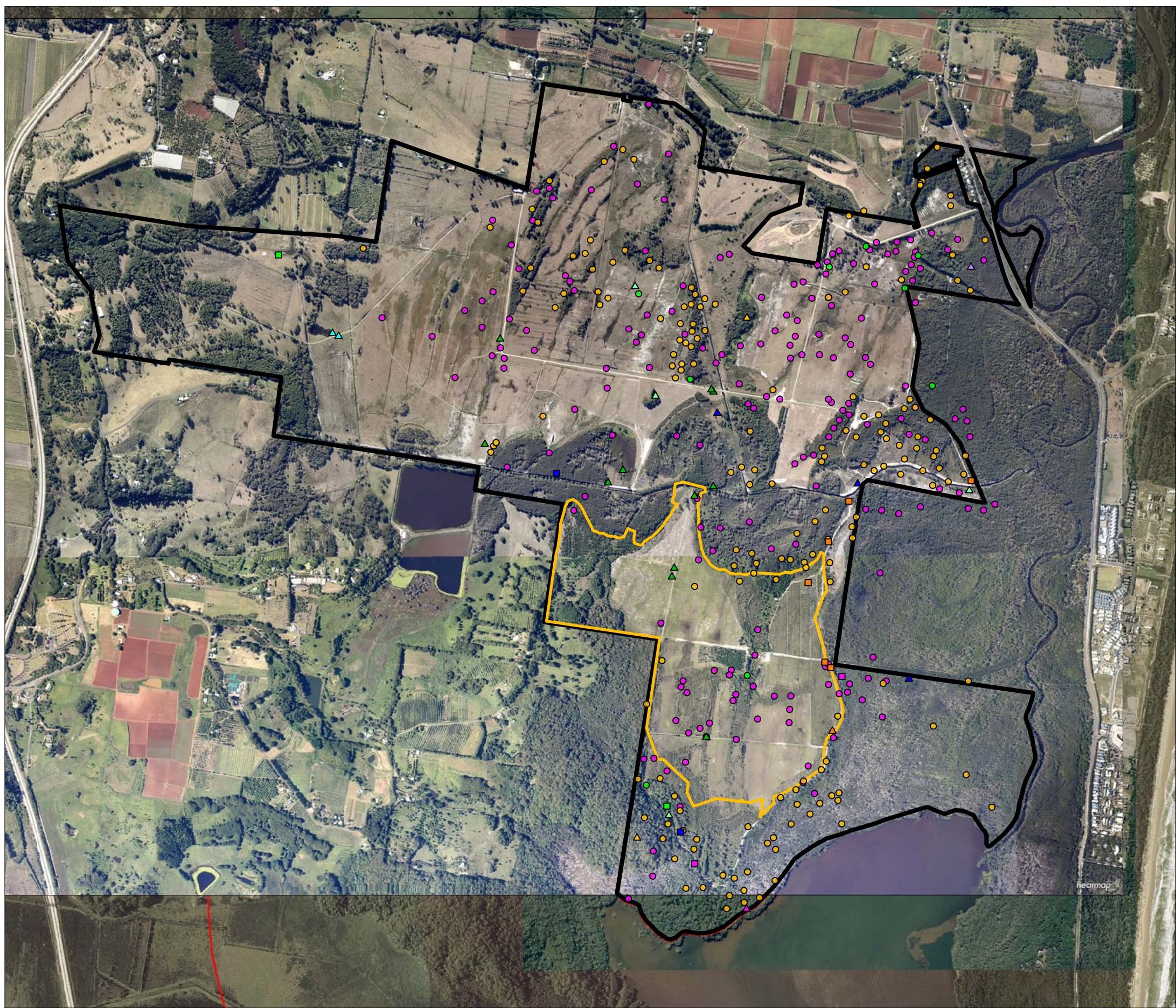


SOURCE: Biolink Ecological Consultants - Tweed Coast Koala Habitat Study (2011); RPS (Ref: 113691-PSP-4a(SCOPE OF WORKS).jpeg)  
 SCALE: 1 : 20 000 @ A3  
**JAMES WARREN & ASSOCIATES PTY LIMITED**  
 Environmental Consultants

CLIENT  
 Project 28 Pty Ltd  
 PROJECT  
 Response to Koala Submissions  
 Kings Forest Estate  
 Melaleuca Drive, Duranbah, NSW  
 Shire of Tweed

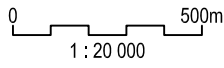
**APPENDIX 1**  
**FIGURE 2**  
 PREPARED: BW  
 DATE: 07 September 2012  
 FILE:N97017\_Impact Core Koala.cdr

TITLE  
**OVERLAY OF KOALA HABITAT & SCOPE OF WORKS**



**LEGEND**

- ▲ Black bittern
- ▲ Black-necked stork
- ▲ Bush hen
- ▲ Bush stone-curlew
- ▲ Glossy black cockatoo
- ▲ Grass owl
- ▲ Masked owl
- ▲ Osprey
- Common blossom bat
- Common planigale
- Grey-headed flying-fox
- Koala
- Yellow-bellied sheathtail bat
- Wallum sedge frog
- Wallum froglet
- Cudgen Paddock
- Kings Forest Boundary



SOURCE: JWA; Landpartners - Threatened Fauna - Birds & Mammals & Amphibians; Atlas of NSW Wildlife; Near Map 2011 Aerial  
 SCALE: 1 : 20 000 @ A3  
**JAMES WARREN & ASSOCIATES PTY LIMITED**  
*Environmental Consultants*

CLIENT  
 Project 28 Pty Ltd  
 PROJECT  
 Response to Koala Submissions  
 Kings Forest Estate  
 Melaleuca Drive, Duranbah, NSW  
 Shire of Tweed

**APPENDIX 1**  
**FIGURE 3**  
 PREPARED: BW  
 DATE: 23 August 2012  
 FILE: N97017\_Base.dwg

TITLE  
**THREATENED FAUNA RECORDS**