

2024 Annual Review

Attachment H: 2024 Exploration Summary



Table of Contents

1.	Exploration Summary	2
1.1	Exploration Drilling.....	2
1.2	Aerial Electromagnetic Survey	7

Tables

Table 1-1 - Summary of 2024 Exploration Drilling	2
Table 1-2 2024 Borehole Details	6

Figures

Figure 1-1 - 2025 Proposed Exploration Areas	3
Figure 1-2 - Exploration Notice & Community Information (The Coolah District Diary 6/12/2023)	4
Figure 1-2 - Exploration Notice & Community Information (The Dunedoo District Diary 13/12/2023)	4
Figure 1-4 - Exploration Notice & Community Information (Mudgee Guardian 15/12/2023, 22/12/2023 & 12/1/2024)	5
Figure 1-5 - AEM Notice & Community Information (The Coolah District Diary 27/3/2024)	8
Figure 1-6 - AEM Notice & Community Information (The Dunedoo District Diary 20/3/2024)	8
Figure 1-7 - AEM Notice & Community Information (The Gulgong Gossip April 2024 Edition)	9
Figure 1-8 - AEM Notice & Community Information (Mudgee Guardian 29/3/2024 & 5/4/2024)	9

1. Exploration Summary

1.1 Exploration Drilling

In 2024, surface exploration included drilling¹ of 28 boreholes (9 partially -cored and 19 open) at Ulan Underground, 28 boreholes (12 partially -cored and 16 open) at Ulan West, 14 boreholes (3 partially -cored and 11 open hole) at Bungaba (EL8687/9363) and 9 partially-cored boreholes within EL9419 (**Table 1-1**) for mine design characterisation, geotechnical and coal quality purposes.

Of the 16343 drilled, 9076m was open hole drilling and 7266m was core drilling. Cored holes were chipped down to approximately 20m above the Ulan Seam, and then cored to total depth. The core is logged in the field and stored in the Ulan core shed. Exploration holes were geophysically logged, surveyed by site surveyors and then sealed and rehabilitated consistent with the requirements of the *Exploration Code of Practice: Rehabilitation*². Coal quality testing results are positive to mining and the geological model was updated. No prospecting operations were undertaken in environmentally sensitive areas of state significance or exempted areas as defined by the *Mining Act 1992*.

Table 1-1 - Summary of 2024 Exploration Drilling

	Ulan Underground	Ulan West	Bungaba	EL9419	Total
Tenement	ML1468	ML1468	EL8687	EL9419	
Core Boreholes	9 x Partially cored	12 x Partially cored	3 x Partially cored	9 x Partially cored	33
Meters Drilled	1990m	2247.95m	389.66m	2638.94m	7266.55m
Non-Core Boreholes	19	16	11	0	46
Meters Drilled	4491m	3024m	1561.3m	0	9076.3m
Total Meters Drilled	6981m	5271.95m	1950.96m	2638.94m	16342.85
Boreholes Grouted	19 boreholes grouted	28 boreholes grouted	14 boreholes grouted	9	70
Boreholes Rehabilitated	19	28	14	9	70

The proposed 2025 exploration program is outlined in **Figure 1-1**; this program is subject to change based on operational requirements. There are 63 boreholes (0 EL8687/9363, 25 EL9419, 30 ULW & 8 UUG) planned to be drilled within the next Reporting Period. These boreholes will be drilled to characterise areas of geological and geotechnical concern.

¹ Authorised Surface Disturbance Notification (SDN) is required from the DPIE-RR for drilling in exploration licence areas outside of the mining lease.

² NSW Department of Planning and Environment, Division of Resources and Geoscience (2015) *Exploration Code of Practice: Rehabilitation*

Figure 1-1 - 2025 Proposed Exploration Areas

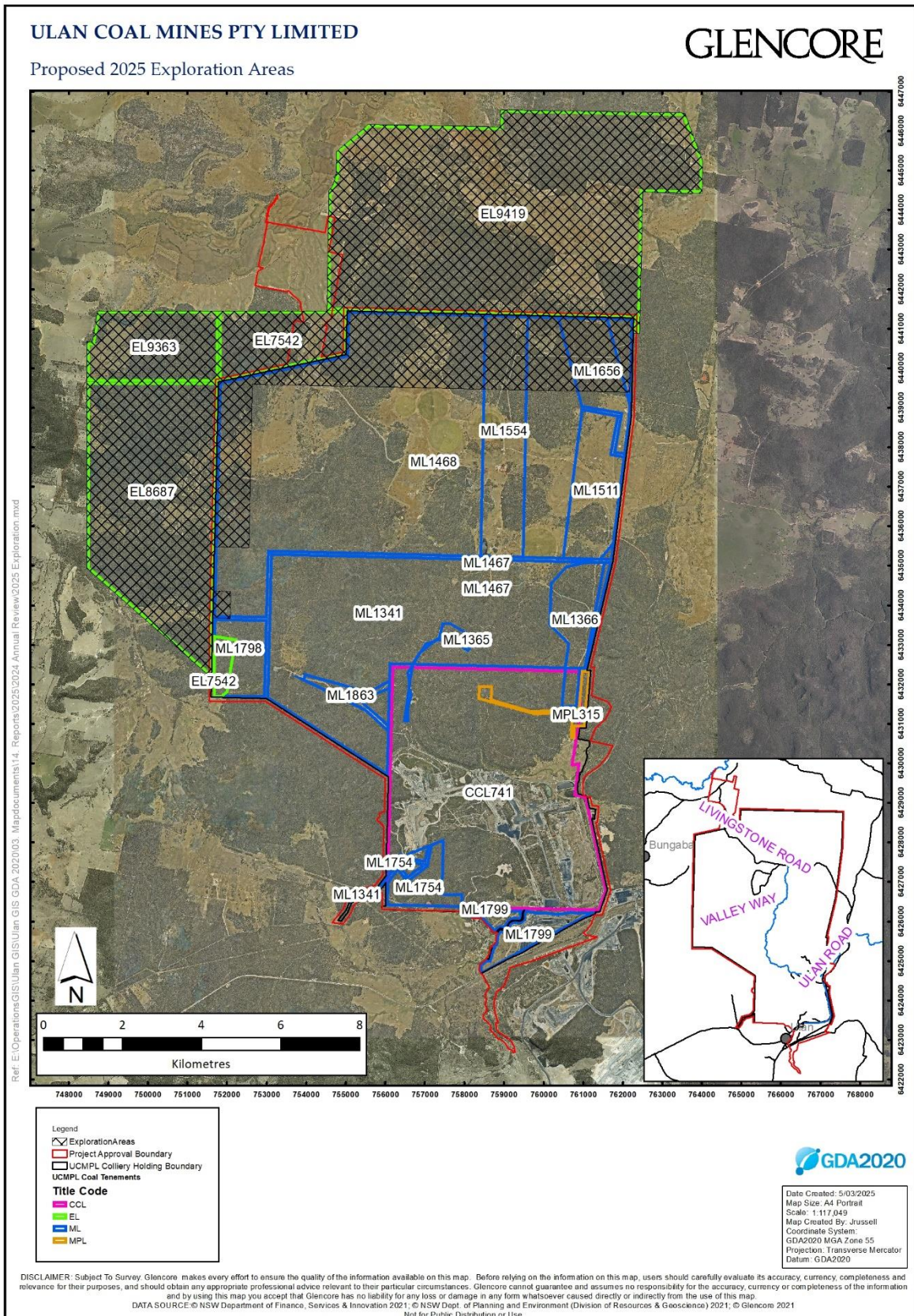


Figure 1-4 - Exploration Notice & Community Information (Mudgee Guardian 15/12/2023, 22/12/2023 & 12/1/2024)

2024 EXPLORATION PROGRAM

This notice is provided in accordance with the Community Consultation Guidelines for Exploration issued by Regional NSW Division of Resources and Geoscience.

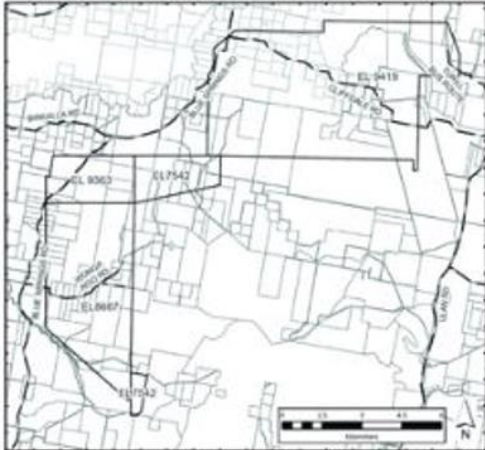
Ulan Coal Mines Pty Limited propose to continue exploration drilling activities within our Exploration Licence Areas 7542, 8687, 9363 and 9419 for their 2024 Exploration Program.

Throughout 2024 Ulan Coal will provide further detail for residents within 5km of the exploration areas via newsletter distribution and invitations to attend community information events. Newsletters are also available on our website: <https://glencore.ws/ulancommunity>

Landholders and residents within close proximity to the exploration drill sites may notice some noise during daytime hours, Monday to Friday, where clearing works or drilling is being undertaken.

Residents may also notice a few extra vehicle and truck movements on local roads.

Thank you in advance for your understanding and patience.



If you would like further information about this activity, please contact Justin Russell, on 0464 388 071 or at ulancommunity@glencore.com.au

Table 1-2 2024 Borehole Details

Ulan West		
Site ID	Description	Depth (m)
DDH611	Partly Cored HQ3	171.00
DDH701	Partly Cored HQ3	198.26
DDH702	Partly Cored HQ3	180.16
DDH703	Partly Cored HQ3	140.77
DDH704	Partly Cored HQ3	215.88
DDH705	Partly Cored HQ3	143.69
DDH706	Partly Cored HQ3	171.00
DDH707	Partly Cored HQ3	197.64
DDH708	Partly Cored HQ3	222.00
DDH709	Partly Cored HQ3	220.70
DDH710	Partly Cored HQ3	194.85
DDH711	Partly Cored HQ3	192.00
R1274	Open Hole	229.00
R1275	Open Hole	235.00
R1276	Open Hole	174.00
R1277	Open Hole	144.00
R1278	Open Hole	145.00
R1279	Open Hole	145.00
R1280	Open Hole	193.00
R1281	Open Hole	199.00
R1282	Open Hole	187.00
R1283	Open Hole	179.00
R1284	Open Hole	187.00
R1285	Open Hole	199.00
R1286	Open Hole	205.00
R1287	Open Hole	199.00
R1288	Open Hole	205.00
R1289	Open Hole	199.00
EL9419		
Site ID	Description	Depth (m)
DDH741	Partially_Cored	341.8
DDH742B	Partially_Cored	225
DDH743	Partially_Cored	342
DDH745	Partially_Cored	306.14
DDH746	Partially_Cored	194.79
DDH747	Partially_Cored	230.84
DDH748	Partially_Cored	326.79
DDH749	Partially_Cored	338.79
DDH780	Partially_Cored	332.79
Ulan Underground		
Site ID	Description	Depth (m)
DDH750	Partly Cored HQ3	212.8
DDH751	Partly Cored HQ3	251.8
DDH752	Partly Cored HQ3	233.8
DDH753	Partly Cored HQ3	176.8
DDH754	Partly Cored HQ3	182.8
DDH755	Partly Cored HQ3	203.8
DDH756	Partly Cored HQ3	287.8
DDH757	Partly Cored HQ3	215.8
DDH758	Partly Cored HQ3	224.8
R1341	Open	213
R1342	Open	219
R1343	Open	219
R1344	Open	213

R1345	Open	219
R1346	Open	273.2
R1347	Open	261.2
R1348	Open	339.2
R1349	Open	321.2
R1350	Open	333.2
R1351	Open	333.2
R1352	Open	339.2
R1353	Open	285.2
R1354	Open	237
R1355	Open	231
R1356	Open	267.2
R1357	Open	189.2
R1358	Open	183.2
R1359	Open	315.2
Bungaba		
Site ID	Description	Depth (m)
DDH695	Partially_Cored	146.98
DDH697	Partially_Cored	92.84
DDH744	Partially_Cored	149.84
R1318	Open_Hole	201
R1319	Open_Hole	153
R1320	Open_Hole	153
R1321	Open_Hole	152
R1322	Open_Hole	146
R1323	Open_Hole	164
R1324	Open_Hole	146
R1325	Open_Hole	116
R1326	Open_Hole	134
R1327	Open_Hole	104
R1328	Open_Hole	92.3

1.2 Aerial Electromagnetic Survey

Airborne electromagnetic survey (AEM) work on portions of Ulan Coal Mines Pty Limited’s Exploration Licences (EL7542, EL8687, EL9363 and EL9419) and Mine Leases (ML1468 and ML1798) in the localities of Bungaba, Turill and Uarbry was conducted in June and July 2024.

An AEM survey measures natural variations in the electrical properties of soil, rocks and water. The AEM assessments included Time Domain Electromagnetic and Magnetic Survey flown by a single helicopter. To provide adequate turning circles for the helicopter, the flight footprint included an area broader than the data collection zone itself.

The aerial survey was undertaken by a helicopter flown at approximately 70 metres above ground level with a trailing load about 35 to 40 metres above ground level in a grid pattern predominately in the East to West and West to East directions at short spaced intervals and North to South and South to North at larger spaced intervals..

The AEM program was announced in advertisements placed in

- Mudgee Guardian Mining Notice Classifieds 29 March and 5 April 2024,
- The April edition of the Gulgong Gossip
- The Coolah District Diary 27 March 2024 and
- The Dunedoo District Diary 20 March 2024

Figure 1-5 - AEM Notice & Community Information (The Coolah District Diary 27/3/2024)

12 Issue No: 787/24 The Coolah District Diary - Wednesday 27th March, 2024

Are you prepared for weather events such as fire, flooding or drought?

Learn to identify and manage risk on your property and protect waterways. Find out what help is available....



Leadville Workshop
Date: Thurs 11th April
8.30am to 4.30pm
Venue: Leadville Hall,
Black Stump Way, Leadville



Presenters -

- **Dave Waters** - What help is out there? Rural Financial Counselling Service
- **Dr David Brown** - Managing Commercial Risk
- **Alison Elvin**, LLS - Protecting and Improving waterways

FREE

Morning tea and lunch provided
Register today

For more information or to register contact
Fiona : info@dclandcare.com.au 0424 424 131

Includes information from **Emergency Services**



Surface and Aerial Assessments associated with EL7542, EL8687, EL9363, EL9419, ML1468 and ML1798

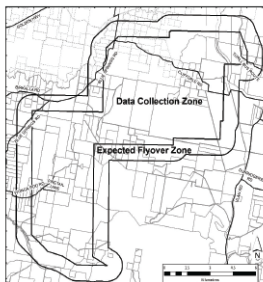
Airborne electromagnetic (AEM) survey work on portions of Ulan Coal Mines Pty Limited's Exploration Licence areas and Mine Leases in the localities of Bungaba, Turill and Uarby, is planned to commence on 29 April 2024, dependent on suitable weather conditions. This survey is in addition to other exploration activities already commenced within EL7542, EL8687, EL9363 and EL9419.

The AEM assessments will include Time Domain Electromagnetic and Magnetic Survey flown by a single helicopter and measures natural variations in the electrical properties of soil, rocks and water.

To provide adequate turning circles for the helicopter, the surveys will include an area broader than the Exploration Licence area. The helicopter will be flown at approximately 70 metres above ground level with a trailing load about 35-40 metres above ground level and will fly in a grid pattern predominantly in East to West and West to East directions at short-spaced intervals and North to South and South to North at larger spaced intervals.

Weather permitting, the survey is expected to be completed within a month, but may be extended by one to two weeks if adverse weather is encountered. All efforts will be made to limit the flight time and no flights will be scheduled on weekends, public holidays or school holidays.

Newsletter updates are provided to landholders and residents registered on our mailing list. If you would like further information about this aerial survey or our exploration activities, please contact Environment and Community Coordinator, Justin Russell, on 0494 398 071 or at ulancommunity@glencore.com.au



ULAN COAL
GLENCORE

Figure 1-6 - AEM Notice & Community Information (The Dunedoo District Diary 20/3/2024)

18 Issue No: 330/24 The Dunedoo District Diary - Wednesday 20th March, 2024

Milestone reached in doubling Landcare funding

THE STATE GOVERNMENT has recently reached another milestone in its election commitment to double the funding for Landcare in NSW, with an investment of \$8.2 million being delivered.

During the state election the NSW Government committed to providing \$59 million in funding over the next 4 years ensure Landcare can expand and continue its vital work rehabilitating the state's natural environment.

The \$8.2 million in funding will be used by Landcare NSW to:

- Fund the employment of up to 7.5 full-time equivalent staff to provide centralised support to host organisations and coordinators funded through the Program.
- Establish a Shared Services Hub that provides centralised support to host organisations and coordinators funded under the Local and Regional Coordinators Grants across a range of business services, but specifically administration and human resources.
- Implement and manage a state Community of Practice including Landcare state gatherings, conferences and regional events.

Implement and manage a Digital Landcare solution to improve reporting processes and knowledge sharing for program participants.

- Develop and maintain strategic partnerships and leverage investment, to increase Landcare's self-sustainability and reduce reliance on direct NSW Government funding over the medium to longer term.

Landcare funding was set to expire in June 2023, with no funding continuation commitment made before the state election.

Pharmacy trial surpasses 12,000 consultations

THE 2023 PHARMACY consultation trial has this month surpassed 12,000 total consults, relieving pressure on GPs and making it easier for people to access basic medications.


The trial allows trained community pharmacists to manage urinary tract infections (UTI) and provide treatment medicines if needed, as well as resupply the oral contraceptive pill (the pill).

Since May last year, when the UTI stage of the trial began, to 15 February 2024, 11,296 consultations occurred across 937 pharmacies around the state.

Since September last year, when the pill stage of the trial began, 854 consultations have occurred across 342 pharmacies.

The trial first began in May last year with almost 100 pharmacies participating. It has now expanded to around 1,200 consented pharmacies across the state, surpassing the 1,000 pharmacies originally projected to participate.

The NSW Government will soon announce the expansion of the trial to include medications for the treatment of minor skin conditions.



The trial continues to undergo evaluation for efficacy, safety and ethical soundness.

Surface and Aerial Assessments associated with EL7542, EL8687, EL9363, EL9419, ML1468 and ML1798

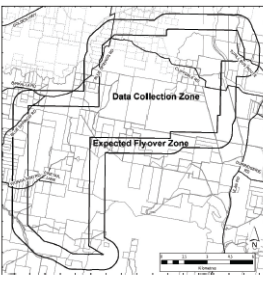
Airborne electromagnetic (AEM) survey work on portions of Ulan Coal Mines Pty Limited's Exploration Licence areas and Mine Leases in the localities of Bungaba, Turill and Uarby, is planned to commence on 29 April 2024, dependent on suitable weather conditions. This survey is in addition to other exploration activities already commenced within EL7542, EL8687, EL9363 and EL9419.

The AEM assessments will include Time Domain Electromagnetic and Magnetic Survey flown by a single helicopter and measures natural variations in the electrical properties of soil, rocks and water.

To provide adequate turning circles for the helicopter, the surveys will include an area broader than the Exploration Licence area. The helicopter will be flown at approximately 70 metres above ground level with a trailing load about 35-40 metres above ground level and will fly in a grid pattern predominantly in East to West and West to East directions at short-spaced intervals and North to South and South to North at larger spaced intervals.

Weather permitting, the survey is expected to be completed within a month, but may be extended by one to two weeks if adverse weather is encountered. All efforts will be made to limit the flight time and no flights will be scheduled on weekends, public holidays or school holidays.

Newsletter updates are provided to landholders and residents registered on our mailing list. If you would like further information about this aerial survey or our exploration activities, please contact Environment and Community Coordinator, Justin Russell, on 0494 398 071 or at ulancommunity@glencore.com.au



ULAN COAL
GLENCORE

Figure 1-7 - AEM Notice & Community Information (The Gulgong Gossip April 2024 Edition)

Surface and Aerial Assessments associated with EL7542, EL8687, EL9363, EL9419, ML1468 and ML1798


Airborne electromagnetic (AEM) survey work on portions of Ulan Coal Mines Pty Limited's Exploration Licence areas and Mine Leases in the localities of Bungaba, Turill and Uarbry, is planned to commence on 29 April 2024, dependent on suitable weather conditions. This survey is in addition to other exploration activities already commenced within EL7542, EL8687, EL9363 and EL9419.

The AEM assessments will include Time Domain Electromagnetic and Magnetic Survey flown by a single helicopter and measures natural variations in the electrical properties of soil, rocks and water.

To provide adequate turning circles for the helicopter, the surveys will include an area broader than the Exploration Licence area. The helicopter will be flown at approximately 70 metres above ground level with a trailing load about 35-40 metres above ground level and will fly in a grid pattern predominately in East to West and West to East directions at short-spaced intervals and North to South and South to North at larger spaced intervals.

Weather permitting, the survey is expected to be completed within a month, but may be extended by one to two weeks if adverse weather is encountered. All efforts will be made to limit the flight time and no flights will be scheduled on weekends, public holidays or school holidays.

Newsletter updates are provided to landholders and residents registered on our mailing list. If you would like further information about this aerial survey or our exploration activities, please contact Environment and Community Coordinator, Justin Russell, on 0484 398 071 or at ulancommunity@glencore.com.au



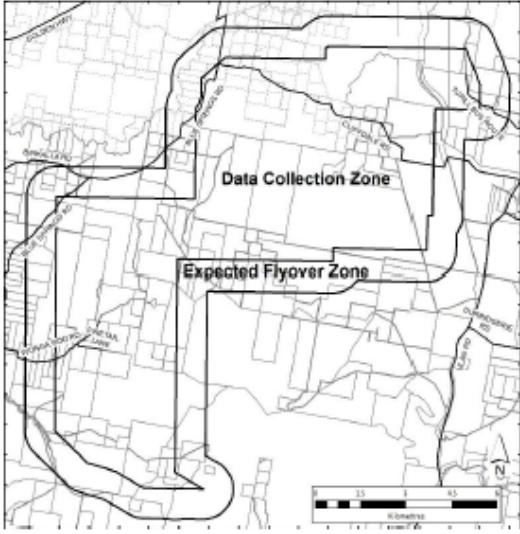


Figure 1-8 - AEM Notice & Community Information (Mudgee Guardian 29/3/2024 & 5/4/2024)

Mining Notices

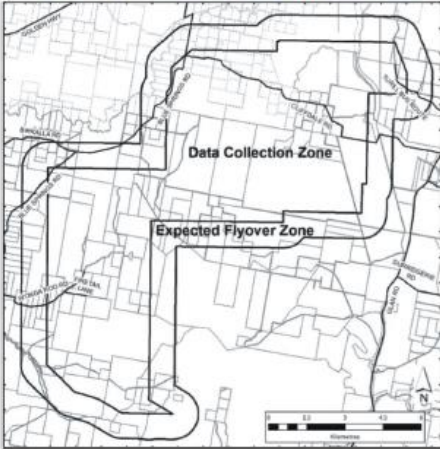
Surface and Aerial Assessments Associated with EL7542, EL8687, EL9363, EL9419, ML1468 and ML1798

Airborne electromagnetic survey (AEM) work on portions of Ulan Coal Mines Pty Limited's Exploration Licences and Mine Leases in the localities of Bungaba, Turill and Uarbry is planned to commence 29 April 2024 dependent on suitable weather conditions. This is in addition to the other exploration activities already commenced within EL7542, EL8687, EL9363 and EL9419.

An AEM survey measures natural variations in the electrical properties of soil, rocks and water.

The AEM assessments will include Time Domain Electromagnetic and Magnetic Survey flown by a single helicopter. To provide adequate turning circles for the helicopter, the surveys will include an area broader than the Exploration Lease itself. The aerial survey will be undertaken by a helicopter flown at approximately 70 metres above ground level with a trailing load about 35 to 40 metres above ground level in a grid pattern predominately in the East to West and West to East directions at short spaced intervals and North to South and South to North at larger spaced intervals. Weather permitting, the survey is expected to be completed within a month but may run over by one to two weeks if adverse weather is encountered. All efforts will be made to limit the flight time. No flights will be scheduled on weekends, public holidays or school holidays.

Newsletter updates will be provided to landholders and residents registered on our mailing list. If you are interested in the Exploration activities and would like further information about this aerial survey, please contact our Environment and Community Coordinator, Justin Russell, on 0484 398 071 or at ulancommunity@glencore.com.au



GLENCORE