

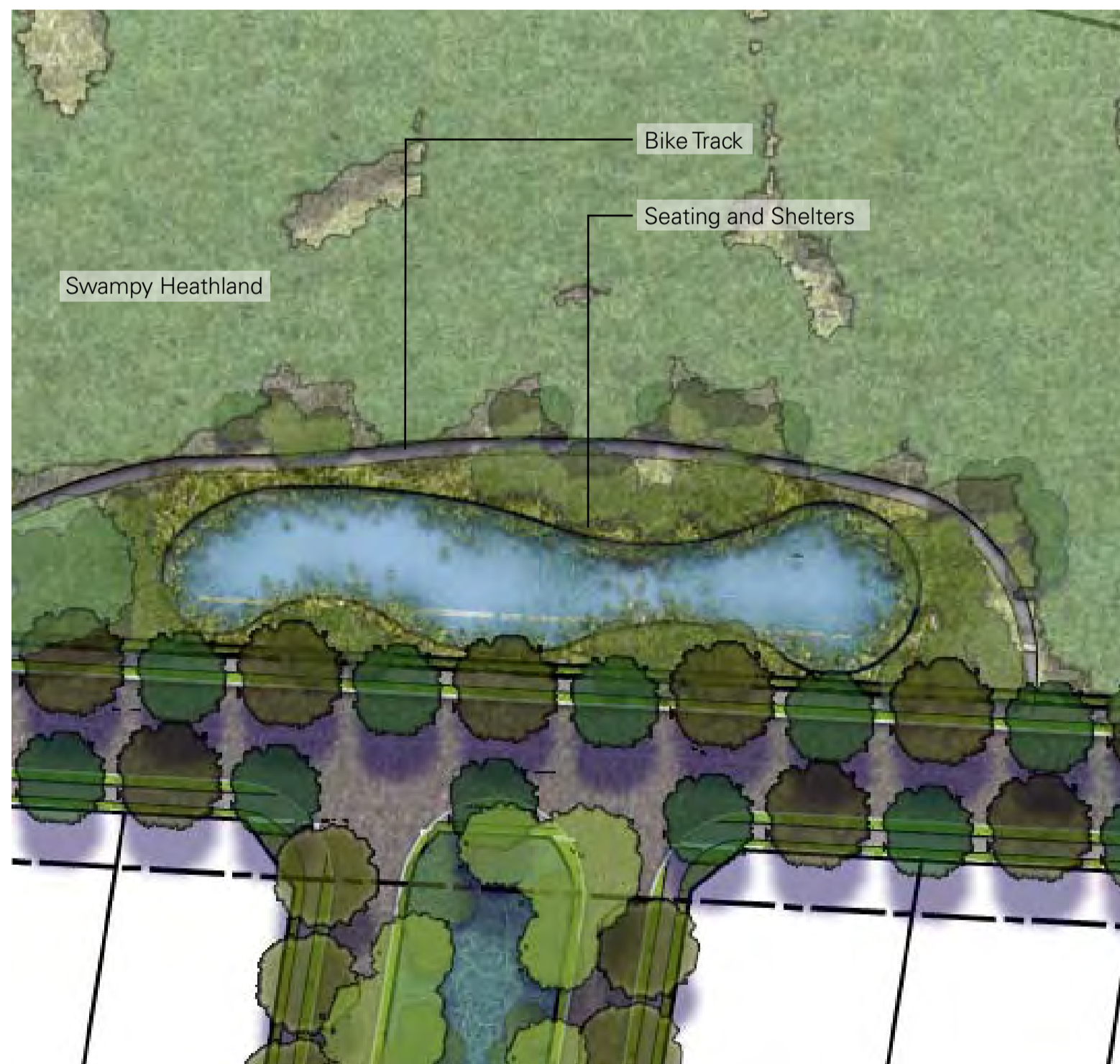
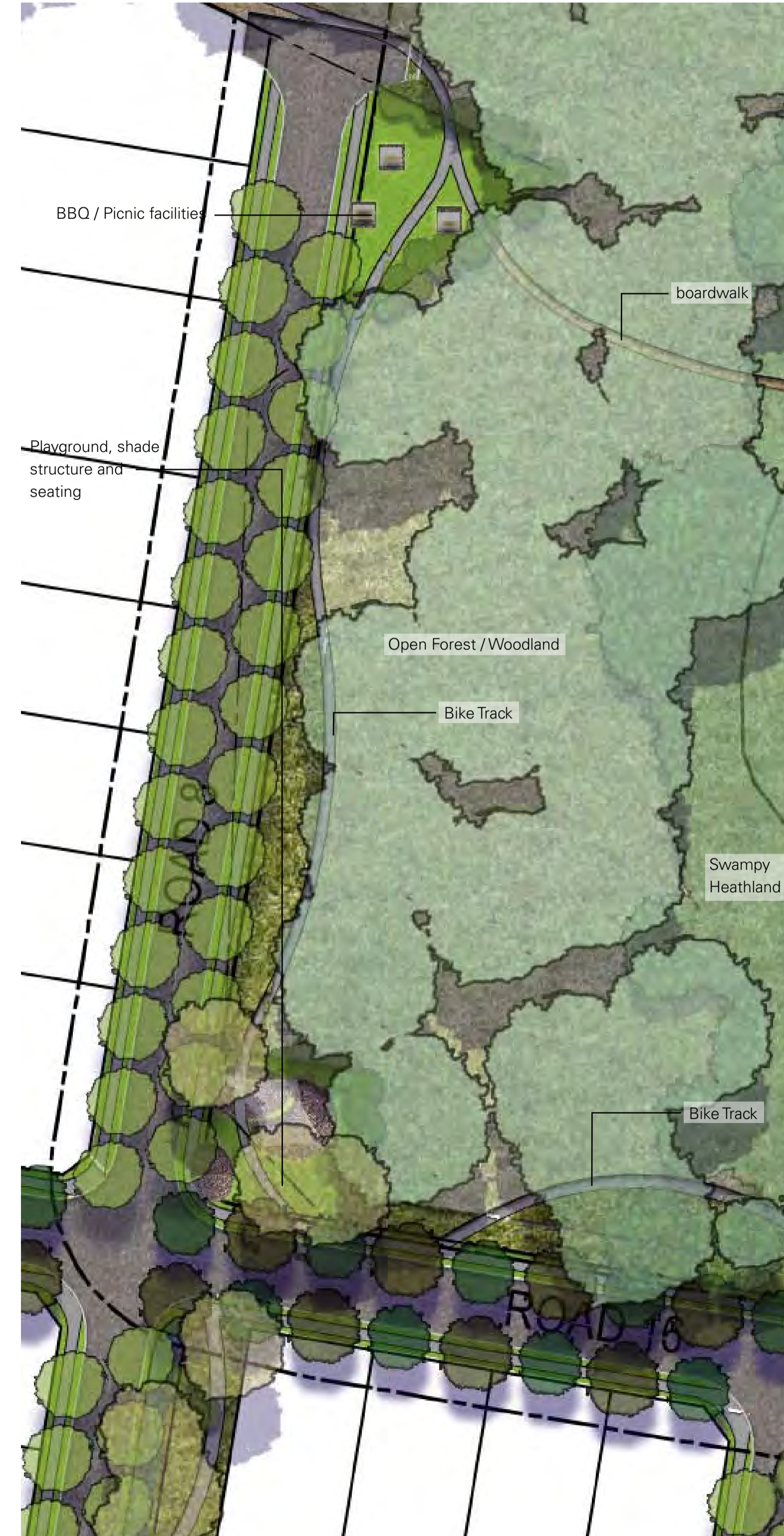
### BUSHLAND PARK

The bushland park lies in the 7(b) corridor in the woodland in the north-west corner of the site. It consists of a turf clearing with some informal seating and picnic tables.



### BBQ AREA and PLAYGROUND

Two parks lie alongside Road 8, one lies south of the LES Development line, within the developable area of the site and consists of a turf area with BBQs and picnic tables. The other park lies within the 7(b) corridor. This park has a playground.



### WATER TREATMENT

This park consists of the landscaping around the wetland that treats the water from the large drainage swale that runs parallel to Road 6. Informal seating and a path that runs around the edge of the wetland are provided. All parks are joined by a bike path that traverses the site.

