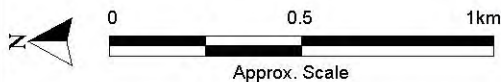


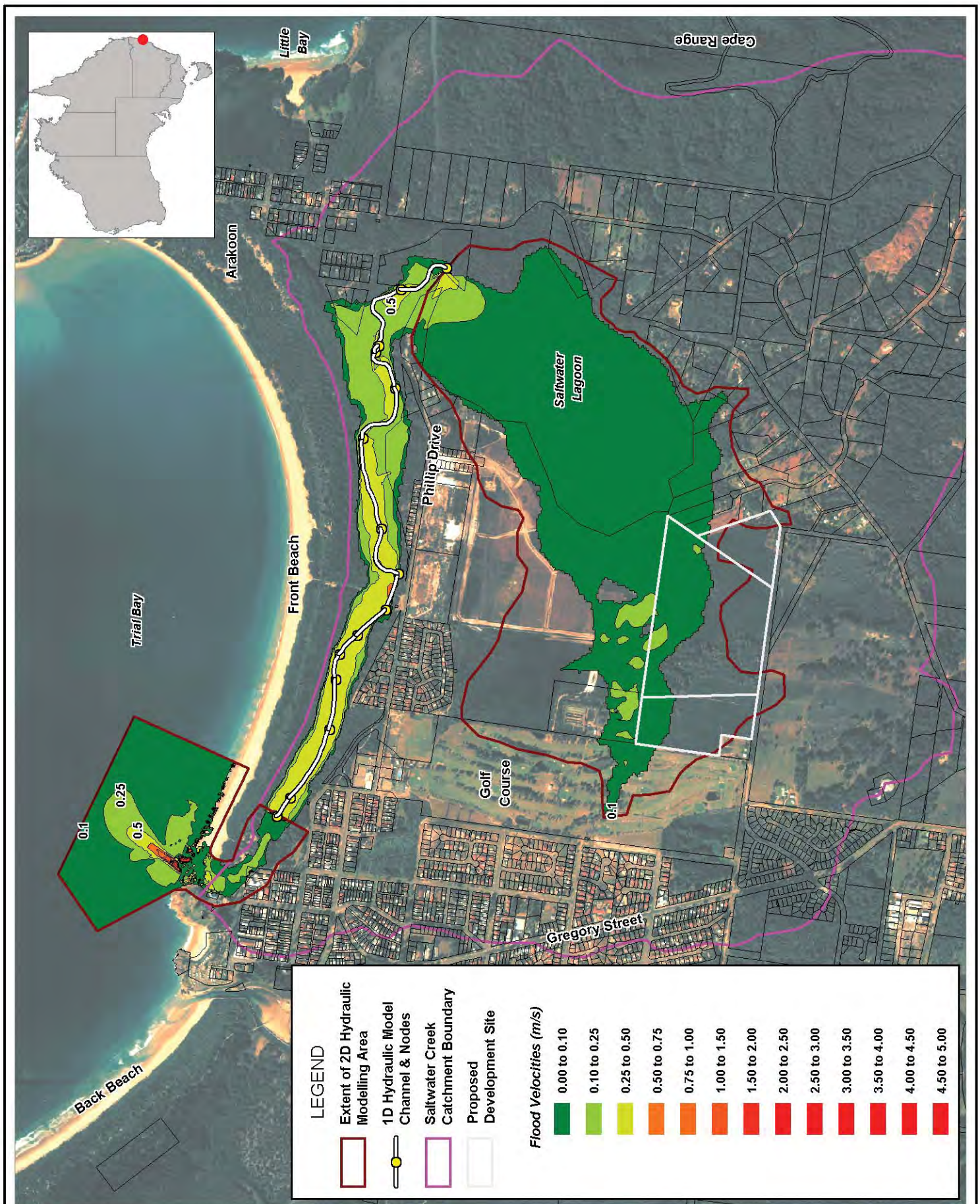
Title: **Scenario 3 Maximum Flood Velocities: 100 Year ARI Flood with 30% Increase in Rainfall Intensity with 2.0m AHD Berm Crest**

Figure: **3-10**

Rev: **A**

BMT WBM endeavours to ensure that the information provided in this map is correct at the time of publication. BMT WBM does not warrant, guarantee or make representations regarding the currency and accuracy of information contained in this map.



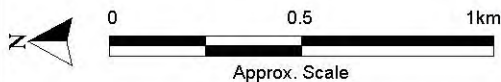


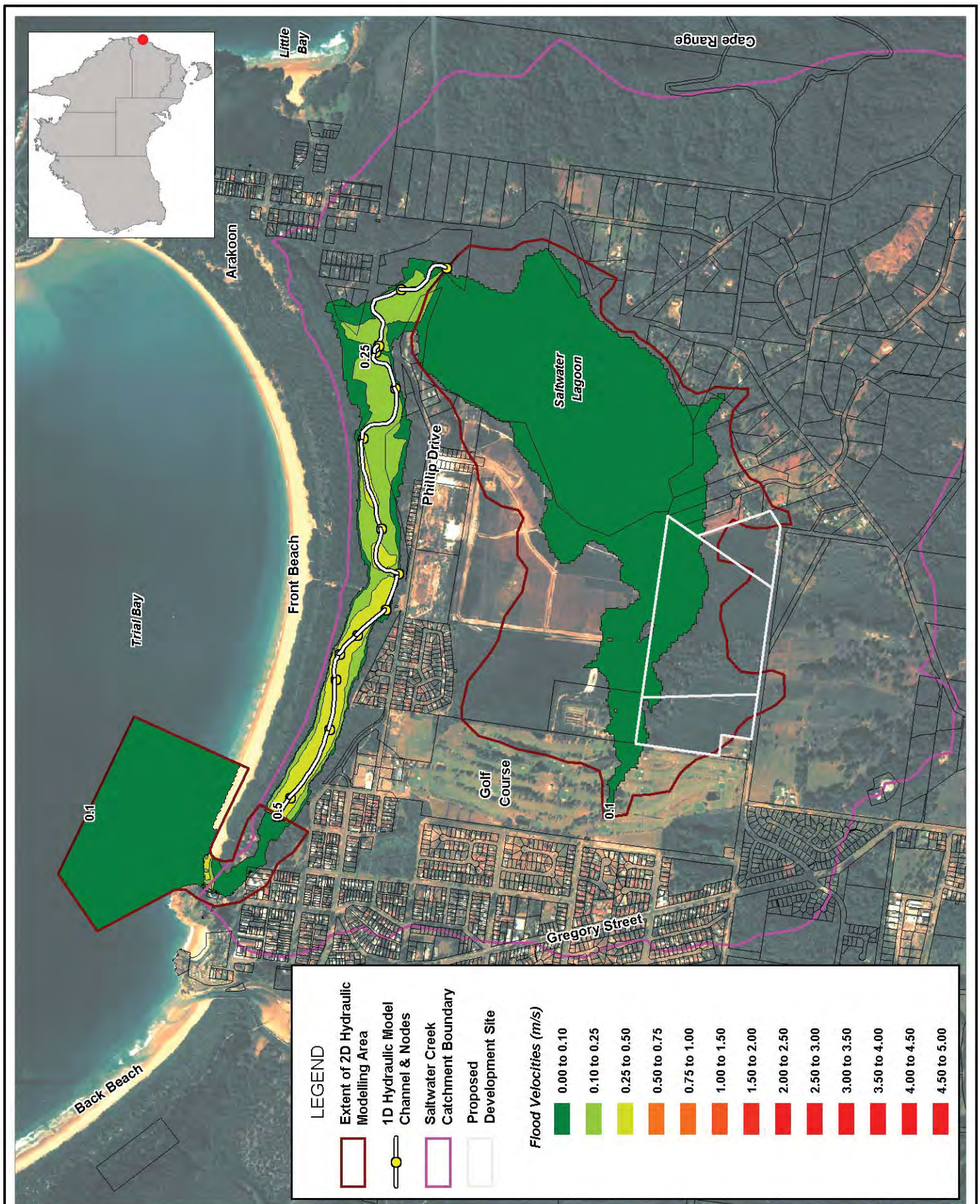
Title:
Scenario 4 Maximum Flood Velocities: 100 Year ARI Flood with 30% Increase in Rainfall Intensity with 3.0m AHD Berm Crest

Figure:
3-11

Rev:
A

BMT WBM endeavours to ensure that the information provided in this map is correct at the time of publication. BMT WBM does not warrant, guarantee or make representations regarding the currency and accuracy of information contained in this map.



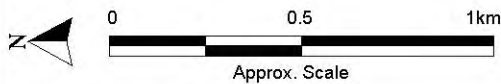


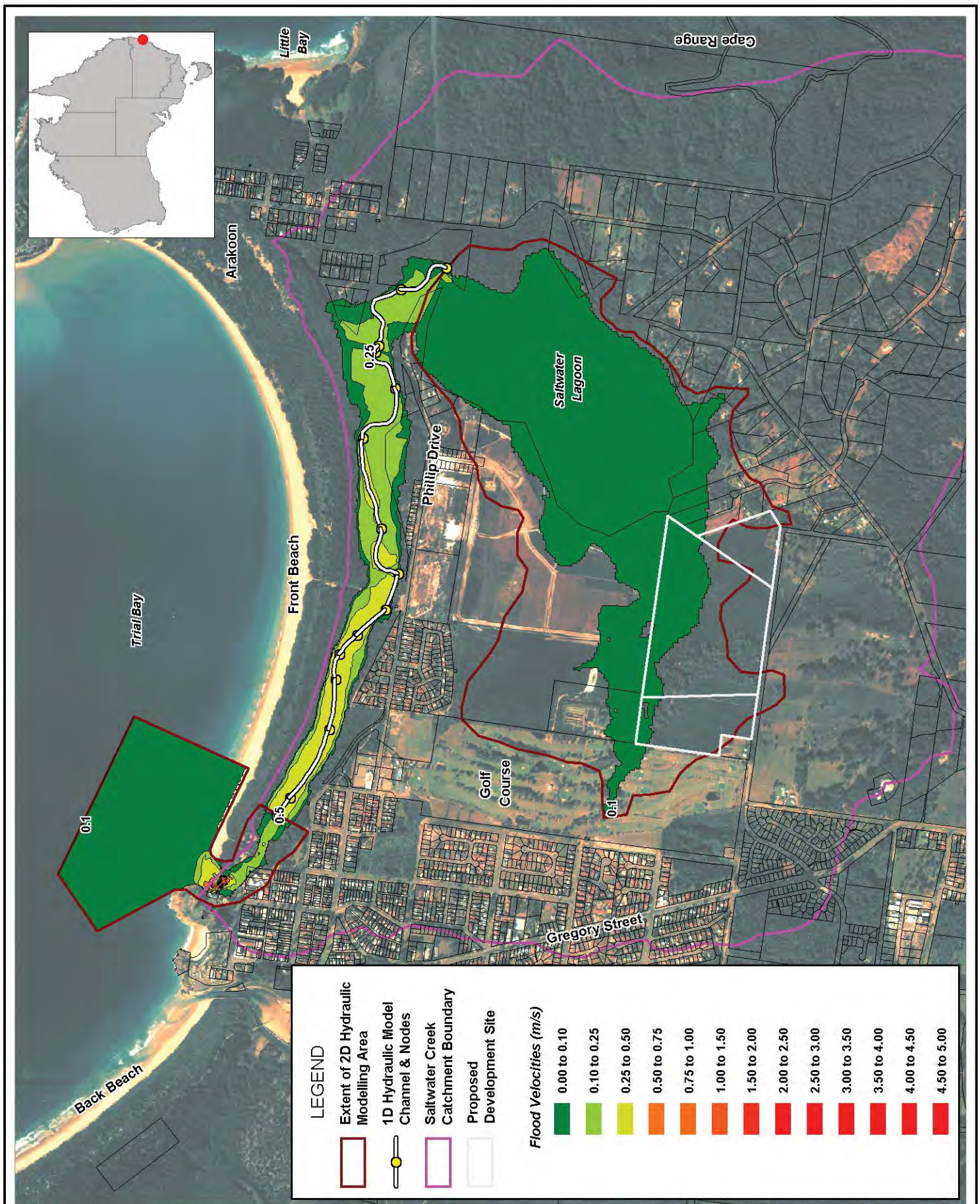
Title:
Scenario 5 Maximum Flood Velocities: 100 Year Storm Surge with 3.0m AHD Berm Crest

Figure:
3-12

Rev:
A

BMT WBM endeavours to ensure that the information provided in this map is correct at the time of publication. BMT WBM does not warrant, guarantee or make representations regarding the currency and accuracy of information contained in this map.



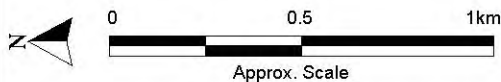


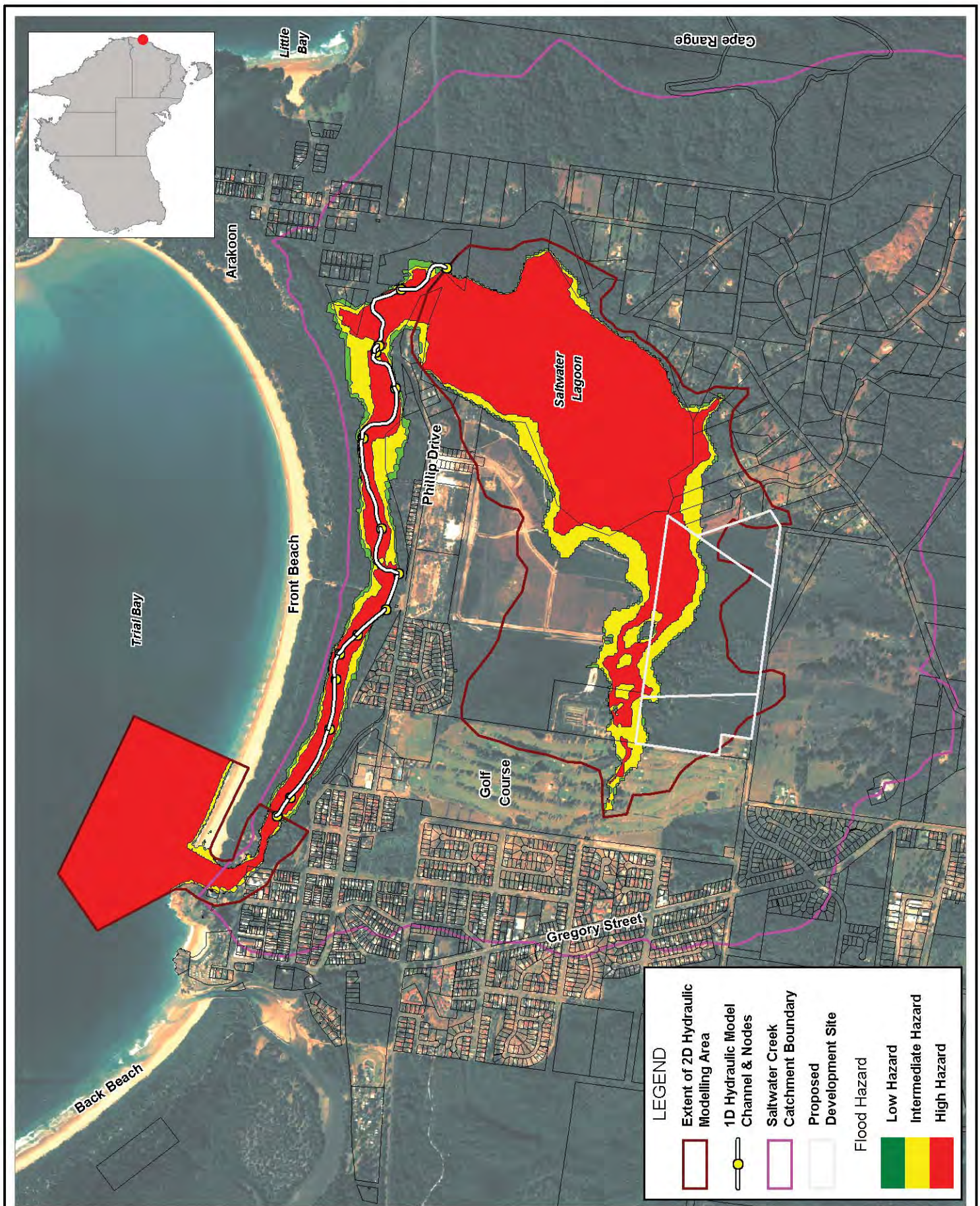
Title:
Scenario 6 Maximum Flood Velocities: 100 Year Storm Surge Plus 0.9m Increase with 3.0m AHD Berm Crest

Figure:
3-13

Rev:
A

BMT WBM endeavours to ensure that the information provided in this map is correct at the time of publication. BMT WBM does not warrant, guarantee or make representations regarding the currency and accuracy of information contained in this map.





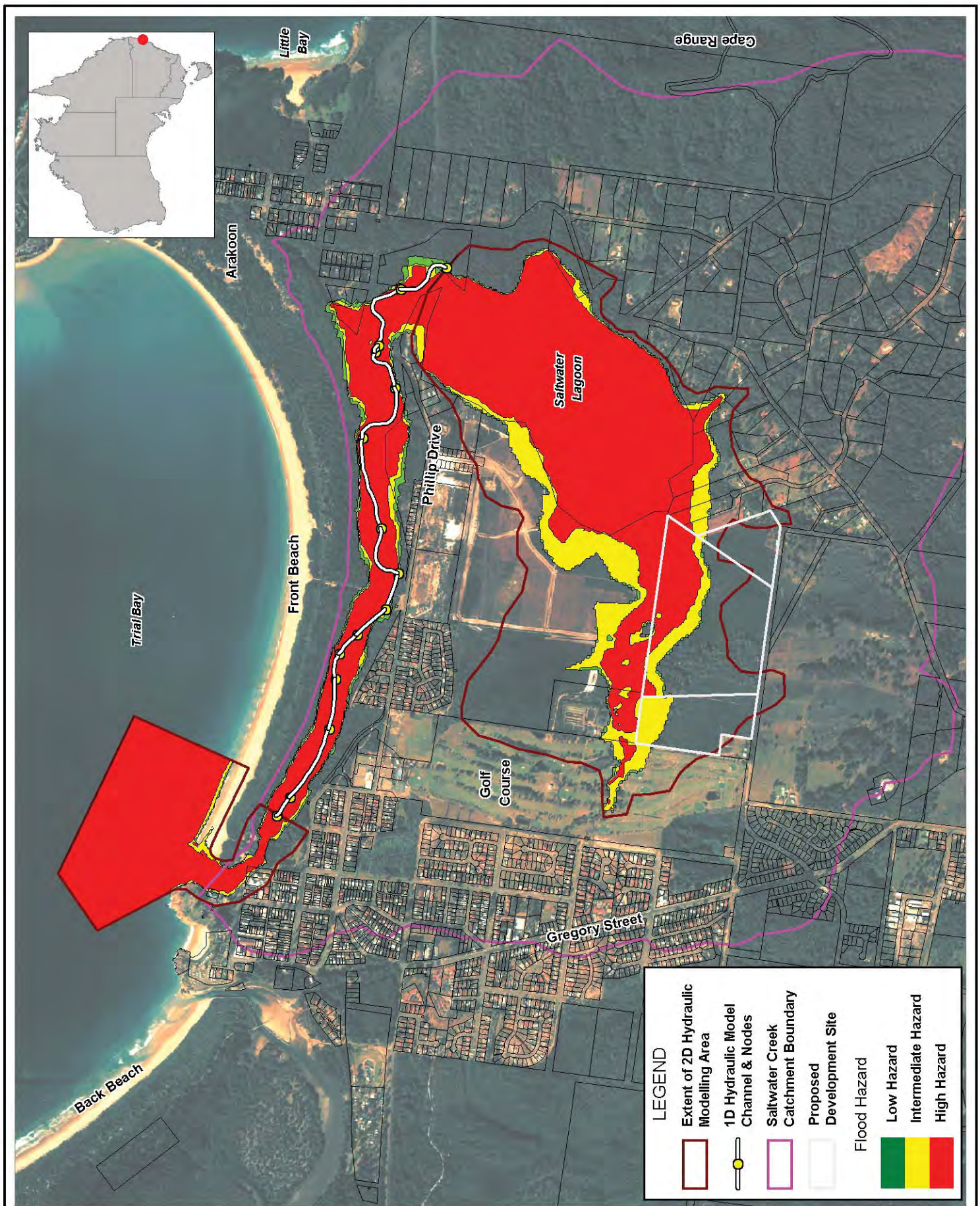
Title:
**Scenario 1 Maximum Flood Hazards:
 100 Year ARI Flood with 2.0m AHD Berm Crest**

Figure:
3-14

Rev:
A

BMT WBM endeavours to ensure that the information provided in this map is correct at the time of publication. BMT WBM does not warrant, guarantee or make representations regarding the currency and accuracy of information contained in this map.





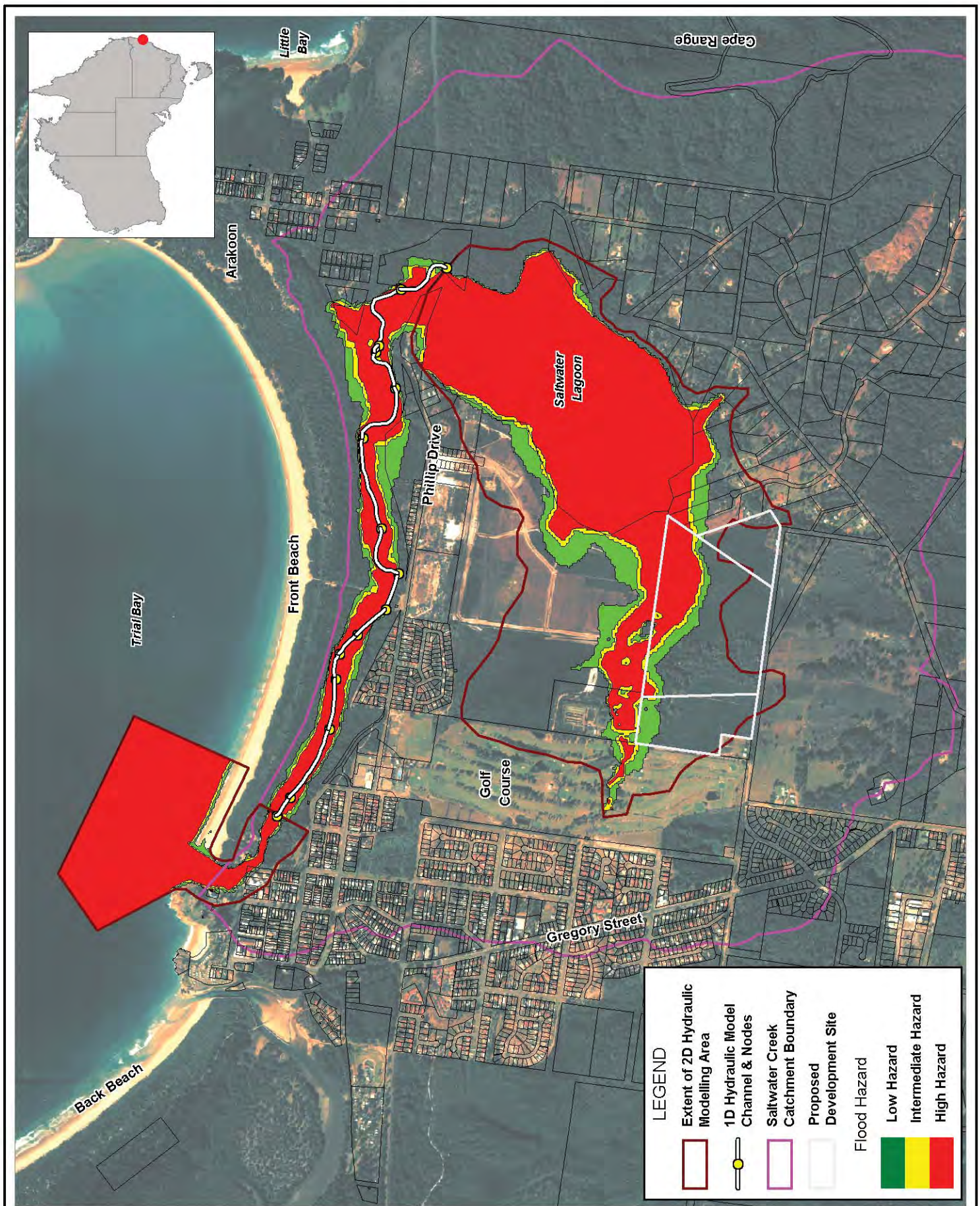
Title:
**Scenario 2 Maximum Flood Hazards:
 100 Year ARI Flood with 3.0m AHD Berm Crest**

Figure:
3-15

Rev:
A

BMT WBM endeavours to ensure that the information provided in this map is correct at the time of publication. BMT WBM does not warrant, guarantee or make representations regarding the currency and accuracy of information contained in this map.



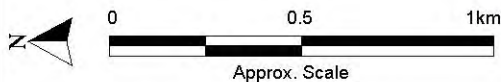


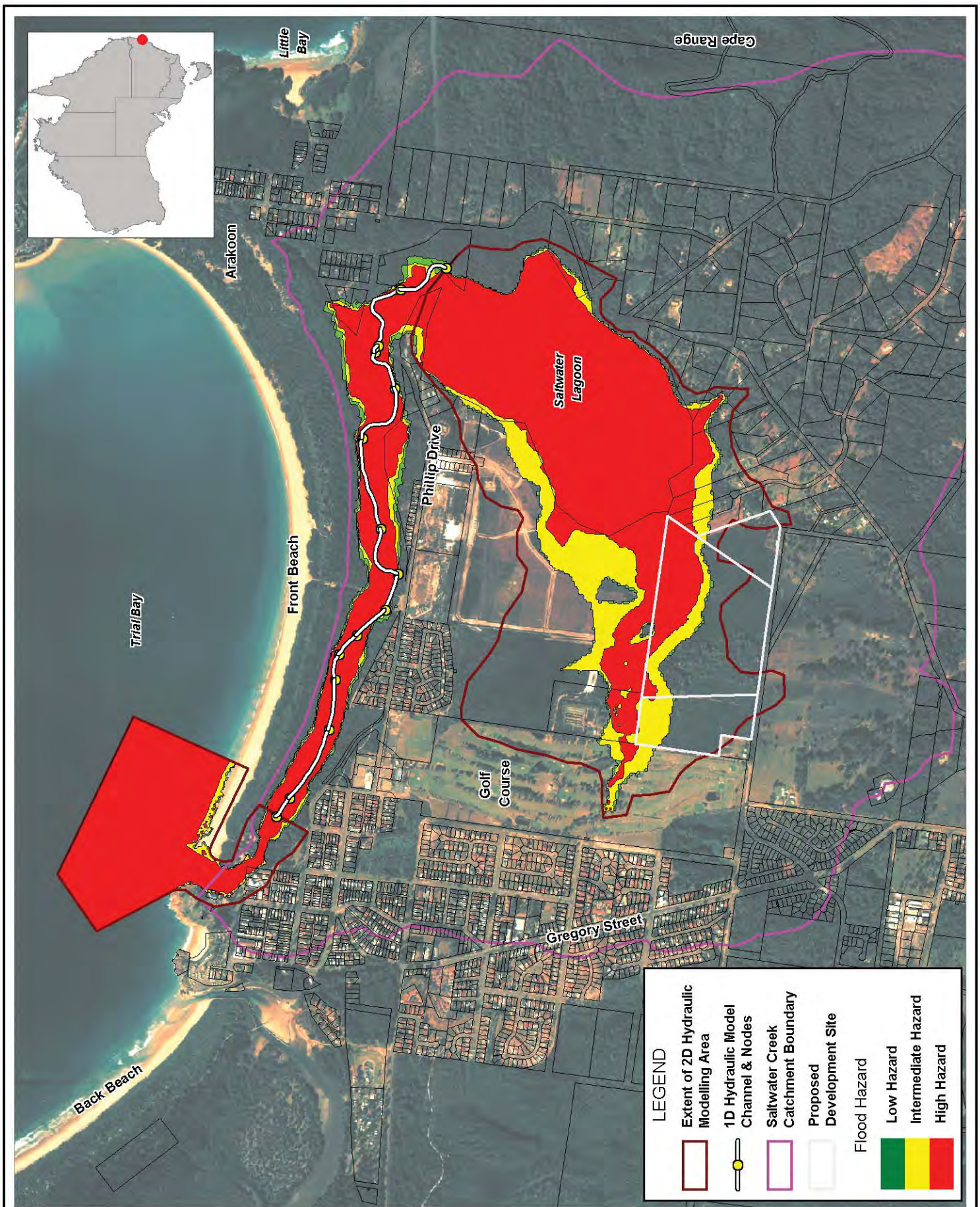
Title:
Scenario 3 Maximum Flood Hazards : 100 Year ARI Flood with 30% Increase in Rainfall Intensity with 2.0m AHD Berm Crest

Figure:
3-16

Rev:
A

BMT WBM endeavours to ensure that the information provided in this map is correct at the time of publication. BMT WBM does not warrant, guarantee or make representations regarding the currency and accuracy of information contained in this map.



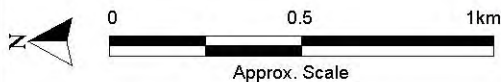


Title:
Scenario 4 Maximum Flood Hazards : 100 Year ARI Flood with 30% Increase in Rainfall Intensity with 3.0m AHD Berm Crest

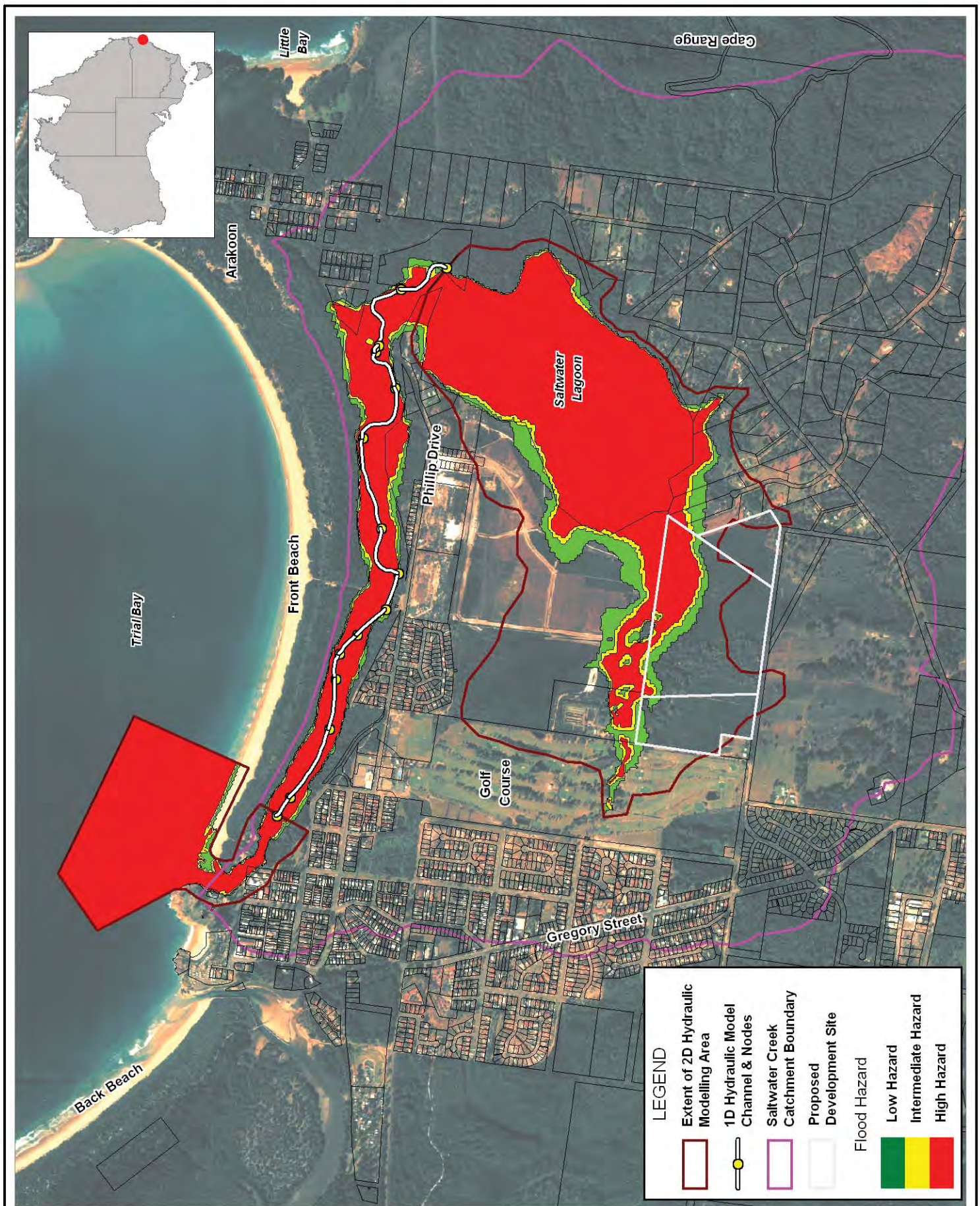
Figure:
3-17

Rev:
A

BMT WBM endeavours to ensure that the information provided in this map is correct at the time of publication. BMT WBM does not warrant, guarantee or make representations regarding the currency and accuracy of information contained in this map.



Filepath : I:\B17867_I_SW_Rocks\DRG\FLD_004_100309 Flood Hazard Design at 100yr ARI at 3.0m AHD with 30% increase Rainfall.wor



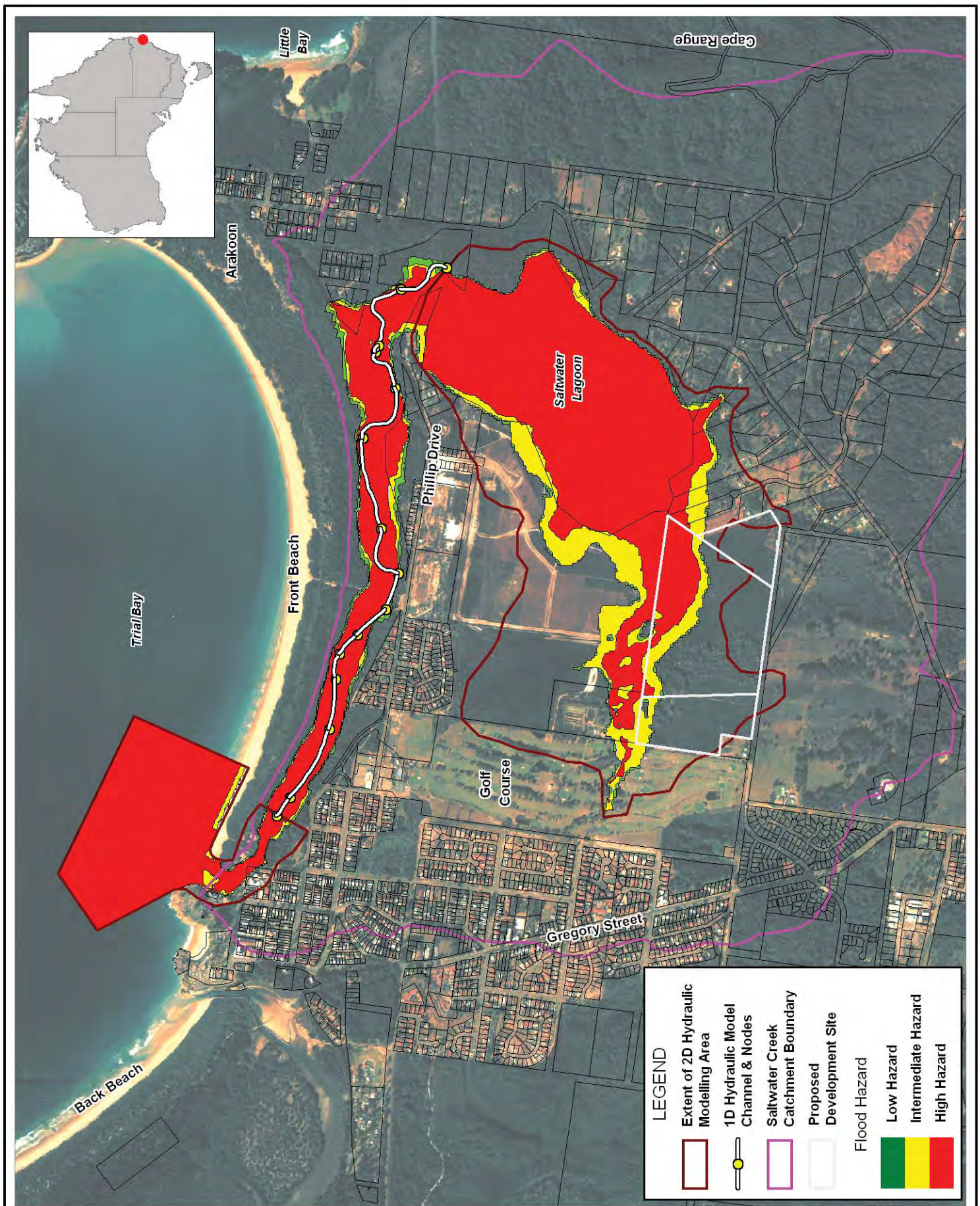
Title:
Scenario 5 Maximum Flood Hazards: 100 Year Storm Surge with 3.0m AHD Berm Crest

Figure:
3-18

Rev:
A

BMT WBM endeavours to ensure that the information provided in this map is correct at the time of publication. BMT WBM does not warrant, guarantee or make representations regarding the currency and accuracy of information contained in this map.





Title:
Scenario 5 Maximum Flood Hazards: 100 Year Storm Surge plus 0.9m with 3.0m AHD Berm Crest

Figure:
3-19

Rev:
A

BMT WBM endeavours to ensure that the information provided in this map is correct at the time of publication. BMT WBM does not warrant, guarantee or make representations regarding the currency and accuracy of information contained in this map.



4. CONCLUSIONS

This investigation has been undertaken to assess an increase in runoff from the proposed development site and to determine potential impacts from climate change. An increase of the rainfall intensity by 30% and a sea level rise of 0.9m were simulated for the climate change scenarios.

The highest flood levels within the site are predicted for scenario 4 (see Table 2-1), which represents the 100 year ARI event with a 30% increase in rainfall intensities and a berm height of 3.0 mAHD.

Should you require any additional information or wish to discuss the contents of this letter, please do not hesitate to contact the undersigned on 07 3831 6744.

Yours faithfully
BMT WBM Pty Ltd

A handwritten signature in black ink, appearing to read 'A. Kolega', is centered on a light gray rectangular background.

Anne Kolega
Senior Flood Engineer