

# Sydney Cricket & Sports Ground Trust

## Stage 2 Redevelopment Noble, Bradman and Dally Messenger Grandstands

### Construction Management Plan



18 August 2008

McLachlan Lister Pty Limited

ABN 75 085 532 047  
Level 1  
1 Hickson Road  
The Rocks  
Ph +61 2 9241 7328  
Fax +61 2 9241 7329

[www.mclachlanlister.com.au](http://www.mclachlanlister.com.au)



**Disclaimer**

McLachlan Lister is not engaged to provide tax, accounting, valuation, investment, legal, quantity surveying, town planning or insurance advice. Any comment we may make in these areas is general comment for discussion purposes only and is not advice upon which we intend you to rely.

**© Copyright McLachlan Lister 2008**

All rights reserved. No part of this publication may be reproduced or transmitted, in any form or by any means, without the express permission of McLachlan Lister Pty Ltd, unless specifically allowed for by the terms of a contractual agreement with McLachlan Lister Pty Ltd.



McLachlan Lister QA

Prepared by: David Lau

Date: 18 August 2008

Released by: Clive Chandler

Date: 18 August 2008

This report has been prepared having regard to the Director-General's Requirements issued pursuant to Section 75F of the Environmental Planning and Assessment Act 1979 dated 10 July 2008.

The Director-General's Key Assessment Requirements specifically relevant to this report are as follows:

KAR Section 6 - Construction Noise Impact Assessment on Fox Studios (**refer CMP Sections 6 & 8**)

KAR Section 7 - Waste Management Strategy during demolition and construction (**refer CMP Section 14**)

KAR Section 8 - Environmental Management Plan (**refer CMP Section 15**)

KAR Section 10 - Site management strategies during demolition and construction (**refer CMP Section 8**)

- Traffic Impact Assessment for demolition, excavation and construction (**refer CMP Section 10**)

- Construction staging and early occupation (**refer CMP Section 19**)

Additionally, this report has been prepared cognisant of the responses from government agencies and others to the Department of Planning's request for key issues and assessment requirements forwarded to the Proponent with the Director-General's Requirements. We acknowledge, however, that these responses were provided for information only and do not form part of the Director-General's Requirements for the environmental assessment.

## TABLE OF CONTENTS

### Reference to Director-General's Requirements

### Executive Summary

- 1.0 Introduction
- 2.0 Project Description
- 3.0 Constraints
- 4.0 Key Milestones
- 5.0 Relocation of Existing Facilities
- 6.0 Impacts on Adjoining Neighbours
- 7.0 Consultation Process
- 8.0 Construction Risk and Mitigation Measures
- 9.0 Safety Measures
- 10.0 Traffic Management
- 11.0 Early Works Scope
- 12.0 Main Contract & Site Establishment
- 13.0 Service Diversions
- 14.0 Waste Management
- 15.0 Environmental Management Plan
- 16.0 Materials Handling
- 17.0 Early Works - Demolition & Service Diversions
- 18.0 Main Contract - Construction Activities
- 19.0 Programme
- 20.0 Ameliorative Measures

Appendix 1 – Site Layout, Cranage & Circulation

Appendix 2 – Construction Vehicle Routes, Access and Egress

Appendix 3 – Relocation of Existing Facilities Schedule

Appendix 4 – Construction Programme

Appendix 5 – Overhead Protection requirements on Fox Studios Property

## EXECUTIVE SUMMARY

Further to the production of the Programme and Construction Methodology document issued by McLachlan Lister in February 2008, the SCGT has chosen Option 2A as the preferred development option which is a combined Bradman and Noble construction sequence with nominal works only to the Messenger Stand. For a detailed review of each option in relation to phasing, programme duration and impact on existing facilities refer to the McLachlan Lister document.

This Construction Management Plan provides the details of how the construction process is likely to be undertaken by the Main Contractor and the activities that will be co-ordinated on and around the site to ensure a safe working environment is maintained with minimum disruption to surrounding roads and businesses.

The principal construction milestones include:

- Commence Early Works (diversions & demolition - 16 February 2009)
- Commence Main Contract (substructure & piling) - 27 April 2009
- Lower Concourse seating available in advance - 9 Nov 2009
- Target Completion date (including SCG Fitout) - 19 July 2010
- Project Completion - 6 September 2010 (including contingency)
- There is a 'buffer' of 17 weeks from Project Completion to the Ashes test

The Construction Management Plan also includes details of the Relocation requirements for the existing facilities contained within the Noble and Bradman grandstands that have to be provided prior to demolition commencing (refer to Appendix 3 for details).



## 1.0 INTRODUCTION

This report has been produced by McLachlan Lister as a component of the document to be lodged with the submission of an Environmental Assessment Report prepared under Part 3A of the Environmental Planning and Assessment Act 1979.

## 2.0 PROJECT DESCRIPTION

The project involves the demolition of the existing Bradman and Noble Grandstands together with a nominal upgrade of the Dally Messenger Grandstand. The grandstands are then reconstructed to a similar profile to the new Hill grandstand and follow the same design principles. In addition to grandstand seating, the development includes a main kitchen & servery, visitors changing rooms, service road, catering offices, maintenance facilities, Members' bar & dining, Members concourse, public concourse, function rooms, dining terrace, glazed atrium, escalators and media facilities.

The work also includes the dismantling and relocation of lighting mast No.1 and increasing the length of the playing field by 3 metres. Lighting mast No.6 adjacent to the Members' Stand is also to be relocated further back and mounted onto the new lift shaft structure.

As part of the heritage strategy, part of the existing Noble grandstand structure and facade is to remain and be incorporated into the development.

Due to the extent of the proposed site compound, the existing tennis courts need to be reconfigured so as to maintain two operational courts throughout the demolition and construction process. Following removal of the hoarding, the tennis courts will be re-instated as part of the external works activity.

A high-level corner of the Bradman grandstand projects over into Fox Studios and will require an overhead protection gantry and scaffold platform constructing in order to maintain a safe working environment to the existing offices and adjacent roadway.

### 3.0 CONSTRAINTS

Major demolition of the existing grandstands is not to commence until the end of the 2008/2009 cricket season and is currently scheduled for 16 February 2009.

By that date it is proposed to have already completed all necessary service diversions and alternative relocation arrangements as required by the existing operations or facilities including maintenance, fire control panel, borewater tank, main server, lighting mast No.1, electrical switchroom, catering offices, Members' & Trust facilities, corporate hospitality areas, media and tennis courts reconfiguration.

A staged completion of the works is required to provide seating in the Lower Concourse by Nov 2009.

Construction works will overhang the Fox Studios boundary wall resulting in the need to provide 'B Class' overhead protection to the offices below and adjacent roadway on Commemorative Avenue.

Pedestrian and traffic circulation is to be maintained between the SCG and SFS during construction. The site compound and associated construction activities must allow for the normal operational access for maintenance, deliveries, emergency vehicles, means of escape from SFS and service providers as necessary.

Some sporting events taking place at the SCG during the day or night will impact on demolition and construction activities during the project. The building contractor will have to make due allowance in his programme to accommodate such events and the necessary information will be included in the tender documents.

## 4.0 KEY MILESTONES

Key design, procurement & construction milestones on the project include:

1. Commence preparation of Early Works documentation - 25 Aug 2008
2. Out to tender for Early Works - 13 Oct 2008
3. Planning Approval - 15 Dec 2008 (earliest)
4. Planning Approval - 16 Feb 2009 (latest)
5. Award Early Works contract - 15 Dec 2008
6. Out to tender for Main Contract - 1 Dec 2008
7. Relocation Works complete - 16 Feb 2009
8. Commence Early Works - 16 Feb 2009
9. Award Main Contract - 16 Mar 2009
10. Commence Main Contract works - 27 April 2009
11. Lower Concourse seating available in advance for spectators - 9 Nov 2009
12. Project Complete and Operational - 6 Sept 2010

Refer to the detailed Proposed Procurement Strategy programme for further detailed information relating to the approvals process, documentation, funding, grant application schedule and procurement strategy.

## 5.0 RELOCATION OF EXISTING FACILITIES

The existing Noble and Bradman Grandstands contain a large number of key facilities and functions that require relocating, either temporarily or permanently prior to demolition commencing on Stage 2.

The current relocation proposals for each existing facility within both grandstands are itemised in the latest Relocation Schedule, revision C which was developed in conjunction with the General Managers of the SCGT responsible for the following sections of the business:

- Corporate Services
- Properties & Maintenance
- Business Development
- Commercial & Operations
- Marketing & Membership

This relocation work is an essential aspect of the programme as vacant possession of the grandstands prior to demolition commencing is important in order to achieve the target completion date.

In summary the relocation of existing facilities includes:

- Switchroom & HV Supply
- Fire Control Panel
- Properties Office Accommodation
- Maintenance Compound, Storage & Workshops
- Main Server Room
- Outside Broadcast Area
- Existing Services (water, hydrant, fire, gas, fibre optic loop)
- Catering Offices & Reception
- PABX Room
- Trustees Suite
- Members Facilities (various)
- Kitchen, Coolrooms & Stores
- Media Areas & Camera Platform
- Borewater Irrigation Station
- Corporate Hospitality
- Public Lounge
- Hirers Area

Refer to Relocation of Existing Facilities Schedule in Appendix 3 for details of the agreed proposals.

## 6.0 IMPACTS ON ADJOINING NEIGHBOURS

The effect of construction on adjoining neighbours will be:

### ACCESS ONTO FOX STUDIOS

A tower crane is to be erected adjacent to the new grandstand and at times the jib may oversail the boundary wall with Fox Studios, however, the crane will be assembled entirely from the SCGT side.

High-level works to new Bradman Grandstand requiring protection to offices below boundary overhang. A 'B class' structure will be necessary to protect the existing office building in Commemorative Avenue both during demolition of existing stand and construction of the new stand. Refer to Appendix 5 for location plan.

The steelwork structure and deck will require access from within Fox Studios to deliver and construct over a period of 2-3 days depending on the column support details. Plant and equipment will include semi-trailers delivering materials and a mobile crane with access from Driver Avenue.

A scaffold access structure will be erected later as the grandstand superstructure is installed. Access to construct this scaffold will be from the SCG site at times agreed with Fox Studios.

Attachment 5 shows the approximate minimum area of 'B class' steelwork structure that will need to be erected within the Fox Studios area to provide overhead protection while constructing the grandstand projection. The existing office accommodation and businesses within buildings 24, 25 and 26 may have to be relocated.

An SCG/Fox Studios Access Agreement will be agreed and implemented as currently working to good affect on Stage 1 works.

### NOISE IMPACT ON FOX STUDIOS

Noise during demolition and construction activities is likely to impact mostly on Sound Stage 1 and Buildings 24 - 34 which are the nearest Fox Studios buildings to the proposed SCGT construction zone.

Procedures currently in place for the SCGT Stage 1 redevelopment will also be used for Stage 2 works. Sound monitoring stations will be strategically located as necessary within the Fox Studios area with alarms linked back to headphones in contractors office.

Noisy activities will include:

- Demolition and removal of existing concrete and steel superstructures
- Breaking up and removal of ground slab
- Noise from plant & equipment including piling rigs, cranes, excavators, wagons, concrete pumps, concrete vibrators, compressors, jack-hammers, concrete saws, material hoists, screw guns (roof sheeting) etc.
- Erection of scaffolding, formwork, steelwork, roof sheeting, cladding etc.

The majority of these activities should not affect the normal working operations of Fox Studios but where necessary the following actions will be implemented:

- Works will be carried out before 8.00am and after 5.00pm
- Works will be undertaken at weekends
- Works will be undertaken during agreed 'windows of time'
- Piling will be bored (CFA) rather than impact driven
- Equipment will be fitted with noise suppression devices where possible

The noise criteria of the EPA shall be adopted for the period of construction, and compliance verified by noise monitoring conducted as part of an Environmental Monitoring Programme. All possible steps shall be taken to silence construction plant and equipment in accordance with EPA Environmental Noise Control Guidelines. Any short term exceedance of the minimum noise criteria shall be managed through the scheduling of construction activities such that plant operation is limited in location and duration, and through the implementation of noise mitigation measures. Refer also to Bassett Acoustic Assessment Report.

Interactions and consultations with Fox Studios and Entertainment Quarter during the construction process will be an ongoing requirement based on the very successful working relationship achieved by all parties during the Stage 1 development works.

The principal route for construction traffic accessing the development site will be down Paddington Lane from Moore Park Road. Access and egress to and from the Sydney Football Stadium will be maintained as necessary.

### VIBRATION IMPACT

A Construction Vibration Assessment has been undertaken that predicts the vibration levels caused by various construction activities and the likely impact on Fox Studios buildings. The assessment concludes that worst case vibration levels may occur for short periods and impact on Building Nos 23-29 directly adjacent to the boundary wall.

In comparison to Stage 1 construction activities, Stage 2 is relatively minor and only requires a small amount of structural framing at Ground Level that will provide protection to the office building users and a deck to support the independent scaffold necessary to construct and clad the rear section of the new Bradman grandstand roof.

In agreement with Fox Studios, where construction activities may give cause for concern, the works can be scheduled to take place during specified 'windows of time' to avoid problems in relation to some sensitive Fox Studios operations occurring in the nearest buildings (including Sound Stage 1).

## 7.0 CONSULTATION PROCESS

### MEETINGS & COMMUNICATIONS

The Trust and its Contractor shall establish appropriate Liaison Groups with its neighbours, particularly Fox Studios, at various levels.

A Project Control Group (PCG), chaired by the Trust or its nominee with CEO's nominees as members will meet monthly with appropriate representation from the Trust's Project Manager and Contractor. It will discuss progress and any issues arising from the previous period and will review planning specifically, but not limited to, the next two week period. Any issues that cannot be resolved will be dealt with by the CEO's immediately and if not resolved by them, by an independent arbitrator who will be required to determine the matter within 48 hours.

A Weekly Operations Meeting will be held, chaired by the Trust or its nominee and attended by appropriate representatives of the Project Manager, the Contractor and Fox Studios. The meeting will discuss progress, address any issues that have arisen and will review planning for the next period. Any issues that cannot be resolved will be dealt with by the PCG – immediately if necessary.

Appropriate communications will be set between the Trust, the Project Manager and Fox Studios to allow instant access to each other should unforeseen issues arise.

### COMPLAINTS REGISTER

The contractor shall record details of all complaints received during construction and ensure that at least a verbal response on what action is to be undertaken is provided to the complainant within 2 hours (unless the complainant agrees otherwise) and a detailed written response within 7 calendar days.

Information on all complaints received and response times shall be made available to the Trust every 3 months or any shorter period specified during construction.

This information shall be made available to all relevant government agencies on request. The Contractor shall nominate an appropriate person(s) to receive, log, track and respond to complaints within the specified time-frame. The name and contact details of this person(s) shall be provided to the relevant Council(s), the Department of Planning and the Trust upon appointment or upon any changes to that appointment, but at least one week prior to the commencement of construction.

### ADVERTISEMENT OF ACTIVITIES

Prior to the commencement of Early Works, and then at three-monthly intervals, the Trust shall advertise to all tenants, service providers and landowners in the Precinct, the nature of the works proposed for the forthcoming three months, the areas in which these works are proposed to occur, the hours of operation and a contact telephone number.

If requested, it will arrange meetings with those tenants, service providers and landowners to explain its plans and to understand what the potential impacts may be on them. If necessary, and if appropriate, it will adjust its planning to take these impacts into account.

## 8.0 CONSTRUCTION RISKS AND MITIGATION MEASURES

In respect of construction risks and mitigation measures associated with the construction works refer to Table 1 below. Refer also to Acoustic Assessment Report issued by Bassett Consulting Engineers.

Table 1

Ref	Risks	Mitigation Measures
1	Noise from Demolition Activities	<ul style="list-style-type: none"> <li>▪ Excavator and smaller rock breaker will be used to break up the existing stands</li> <li>▪ Concrete pulveriser will be used to demolish the stands, concrete seating and slabs</li> <li>▪ Noise mitigation equipment will be fitted to construction equipment</li> <li>▪ Close consultation with all stakeholders during the demolition phase to inform of timing and any works which may impact on their operations and amenity.</li> <li>▪ Some works can be undertaken out of hours (before 8.00am and after 5.00pm or Saturday mornings).</li> <li>▪ Remove large sections of structure (pre-cast elements) from site and break up elsewhere.</li> <li>▪ Install noise sensors and alarms</li> </ul>
2	Noise from Construction Activities	<ul style="list-style-type: none"> <li>▪ Implement a Noise Mitigation Strategy</li> <li>▪ Noise mitigation equipment will be fitted to construction equipment</li> <li>▪ Position concrete pumping operations in locations that minimize effect on neighbours</li> <li>▪ Close consultation with all stakeholders during the foundations phase to inform of timing of any works that may impact on their operations and amenity.</li> <li>▪ Some works can be undertaken out of hours (before 8.00am and after 5.00pm or weekends).</li> <li>▪ Install noise sensors and alarms</li> </ul>
3	Noise from Construction Plant & Equipment	<ul style="list-style-type: none"> <li>▪ Tower cranes will be electrically driven rather than diesel.</li> <li>▪ Temporary sound barriers for stationary equipment (compressors, generators, jack-hammers etc)</li> <li>▪ Fix mufflers &amp; maintain equipment</li> <li>▪ Locate equipment as far practicable from sensitive buildings</li> </ul>

Ref	Risks	Mitigation Measures
4	Vibration from Foundation Works	<ul style="list-style-type: none"> <li>▪ The use of bored piles in lieu of driven piles</li> <li>▪ Close consultation with all stakeholders during the foundation phase to inform of timing of any works that may impact on their operations and amenity.</li> <li>▪ Install vibration monitors and alarms</li> </ul>
5	Dust from Demolition and Construction Works	<ul style="list-style-type: none"> <li>▪ Use of perimeter site screens</li> <li>▪ Removal offsite of precast elements to allow crushing elsewhere</li> <li>▪ Hosing down of demolition vehicles</li> <li>▪ A water cart and vacuum for spraying to reduce dust generation on vehicle access routes</li> <li>▪ Regular cleaning of adjacent pavements and roadways</li> <li>▪ Trucks transporting materials off site shall be covered</li> <li>▪ Stockpiles of rubble shall be kept damp or stabilised to prevent generation of dust</li> </ul>
6	Stormwater Runoff	<ul style="list-style-type: none"> <li>▪ Use of silt socks and filter fabric in stormwater runoff pits and gutters</li> </ul>
7	Removal of Hazardous Materials	<ul style="list-style-type: none"> <li>▪ Works will not commence until the hazardous material assessment has been completed and approved removal and disposal methods developed.</li> </ul>
8	Waste Water	<ul style="list-style-type: none"> <li>▪ Waste water from construction activities will be collected and treated prior to disposal</li> </ul>
9	Air Quality	<ul style="list-style-type: none"> <li>▪ The burning of timber and other combustible materials will not be permitted on site at any time</li> </ul>
10	Construction Traffic	<ul style="list-style-type: none"> <li>▪ Ensure appropriate traffic control measures are employed to ensure separation of construction activities and public</li> <li>▪ Pre-agreed safe public access pathways to be established and maintained.</li> <li>▪ No construction work to be scheduled on major event days as agreed in consultation with stakeholders.</li> </ul>

## 9.0 SAFETY

The proposed building contractor will establish a comprehensive Work Safety Plan before commencement on site, detailing safe work methods and procedures to be followed and to ensure compliance with all WorkCover and EPA statutory requirements.

The initial identified safety risks during construction include:

1. Stability of adjacent and retained structures
2. Excavation supports
3. Falls from heights
4. Protection of the public and operational staff
5. Traffic control at entry gate on Moore Park Road
6. Traffic control to shared access on Paddington Lane
7. Storage of fuel on site
8. Falling debris during demolition
9. Lifting of large steel and concrete sections during demolition and construction

Each identified risk activity will be subject to specific measures being developed and implemented. Approved work method statements will be strictly adhered to by all site operatives with constant monitoring by supervisory staff. Daily 'Tool Box' talks will be held with operatives to ensure they are familiar with the agreed methods and procedures.

A Site Safety Committee will be formed comprised of representatives of the main contractor and subcontractors that will make regular inspections of the site as the works proceed.

## 10.0 TRAFFIC MANAGEMENT

An Access and Traffic Management Plan shall be prepared to cover the duration of the works. Access shall be maintained at all times to any affected private properties and businesses.

Construction access to the site will be from Moore Park Road and Paddington Lane. Paddington Lane will be shared access up to the entrance gates into the site compound. Deliveries, maintenance vehicles, emergency vehicles, access/egress to the Sydney Football Stadium (SFS) and general circulation will be maintained up and down Paddington Lane.

Appropriate traffic controls will be in place during demolition and construction to avoid congestion in Paddington Lane. Construction vehicles will not be allowed to queue in Paddington Lane (unless out of hours or by prior agreement) and will be directed into the site compound. Where possible, truck movements are to occur outside of peak traffic flow periods.

The project requires a significant construction area that extends from the 'Walk of Honour', includes half of the tennis courts and through to Paddington Lane. The proposed zone has been selected so that construction traffic and personnel will enter from the Paddington Lane gate, making their way through a new security check-point located so that vehicles can pull-in from the main road to avoid traffic congestion on Moore Park Road.

The use of Paddington Lane by construction traffic will be co-ordinated and strictly controlled in relation to events occurring in the SFS to ensure spectator safety. Apart from isolated situations (i.e. access to construct the small amount of 'B class' hoarding) Fox Studios will be unaffected by construction traffic entering and leaving the Stage 2 site.

Table 2 indicates the approximate average daily number of vehicles entering/leaving the site relative to the overall construction programme period from January 2009 through to October 2010.

**Table 2**

Month	Construction Activity	Daily Estimate of Trucks (not movements)
Jan 2009	Site Establishment	8
Feb 2009	Demolition (inc ground slab)	15
Mar 2009	Demolition (inc ground slab)	25
April 2009	Demolition & Substructure	35
May 2009	Piling/In-ground Services/ Substructure	20
June 2009	Substructure & Superstructure	20
July 2009	Superstructure	20
Aug 2009	Superstructure	20
Sept 2009	Superstructure & Roof Steelwork	25

Month	Construction Activity	Daily Estimate of Trucks (not movements)
Oct 2009	Superstructure/Steelwork/Services	28
Nov 2009	Superstructure/Steelwork/Services	28
Dec 2009	Steelwork/Roofing/Services/Finishes/Lifts	28
Jan 2010	Steelwork/Roofing/Services/Finishes/Lifts	28
Feb 2010	Roofing/Façade/Services/Finishes/Lifts	28
Mar 2010	Facade/Services/Finishes/SCG Fitout/Lifts	28
April 2010	Services/Finishes/SCG Fitout	25
May 2010	Services/Finishes/SCG Fitout	25
June 2010	Services/Finishes/SCG Fitout/Commissioning	20
July 2010	Final Clean/Defects/Handover	10
Aug 2010	Defects/Handover/Remove Site Setup	5
Sept 2010	Client Contingency	0
Oct 2010	Project Completion for Cricket Season	0
Nov 2010		
Dec 2010		

The total number of truck deliveries for the project is estimated at around 10,000 trucks (20,000 movements) - peaking at 35 trucks per day with a maximum of approx. 70 movements on some days.

Car parking for the daily influx of construction workers will be centred on the use of the multi-storey public car park in the Entertainment Centre or Gold Members Car Park. It is anticipated that carparking required for construction associated personnel is likely to be in the vicinity of 120 spaces per day.

Car parking by site operatives or SCGT staff will not be allowed on site or on Paddington Lane.

SCG and SFS events during the construction period will be taken into account and traffic to and from site restricted as required so as not to affect operations staff and spectators.

Refer to Appendix 2 for construction vehicle access and egress routes.

## 11.0 EARLY WORKS SCOPE (PRINCIPAL ITEMS)

It is currently proposed to let an Early Works contract that will encompass the following scope of works:

- Investigations, surveys and reports as required
- Development of method statements and work procedures for approval by SCGT
- Site establishment, temporary services, hoarding etc
- Removal of hazardous materials below ground
- Removal of hazardous materials in existing grandstands
- Relocation of existing light tower
- Provision of alternative borewater tank & supply
- Erect class B overhead protection in Fox Studios
- Stripping-out & demolition of existing grandstands
- Removal of ground-bearing slab
- Bulk dig down to formation level

The Early Works generally comprise of any activity that needs to be completed to enable the Main Contract to commence on 27 April 2009. The first site activity of the Main Contract is likely to be continuous flight auger (CFA) piling as part of the substructure element of works. In order for CFA piling to commence, the existing grandstands need to be demolished, the ground slab removed, bulk excavation completed and any in-ground services diverted or terminated.

The current start date for the Early Works is **16 February 2009** as agreed with the SCGT by which time the minor works in various locations necessary to relocate the existing facilities from within the Noble and Bradman grandstands are completed to enable decanting to occur.

The Early Works will be designed, tendered and let as a separate package with the following programme objectives that need to be achieved to enable the start on site to be achieved:

- Prepare Tender Documents: Aug-Sept 2008
- Out to Tender: 13 Oct 2008
- Tender Return: 10 Nov 2008
- Award Early Works Contract: 15 Dec 2008
- Start on Site: 16 Feb 2009

## 12.0 MAIN CONTRACT

The Main Contract package includes the demolition of existing Noble and Bradman grandstands and construction of a new replacement grandstand incorporating increased seating and back of house amenities. It also includes a nominal upgrade of the Dally Messenger stand. Lighting mast No.1 is to be relocated to avoid clash with the proposed public concourse.

The works will be sequenced so that the Lower Concourse seating is made available by 9 November 2009.

The overall programme is targeted to achieve a project completion date prior to the start of the 2011/2012 cricket season.

### SITE ESTABLISHMENT

Site establishment will involve the installation of site sheds, toilets, amenities, offices, storage containers, off-loading areas and turning area contained within the construction zone as indicated in Appendix 1. Two tower cranes and a number of goods/passenger hoists will be strategically located within the compound.

A security shed will be located on Paddington Lane to monitor and control all pedestrian and vehicular traffic entering or leaving the site. The use of Paddington Lane by construction traffic will be carefully managed to ensure that the operational requirements of the Sydney Football Stadium relating to spectators, maintenance, deliveries, emergency vehicles and means of escape are not compromised.

## 13.0 SERVICE DIVERSIONS

All existing services within the construction zone will be located and identified so as to ascertain the impact on the demolition and construction activities and to maintain all services as necessary beyond the Stage 2 development area.

The Early Works & Relocations Schedule (Appendix 3) identifies electrical switchroom & HV cables, water, hydrant & fire, town gas, fibre optic loop and borewater irrigation station as the principal service issues that have to be addressed. The schedule outlines the proposed course of action to be undertaken in each case.

The existing EA Switchroom is the main problem and although currently indicated on the architectural layouts as remaining in its present location, there is the potential that it may relocate to Moore Park Road. The Trust switchgear would stay local within the Stage 2 redevelopment area for distribution around the site. The final strategy in relation to this issue has yet to be finalized by the Project Team.

In addition, all hydraulic services, including stormwater and sewer drainage will be located and capped at the perimeter of the construction site.

## 14.0 WASTE MANAGEMENT

### Recycling of Demolition Waste

The demolition contractor will be required to recycle the concrete, reinforcement, structural steelwork, metalwork, pipework, ductwork, masonry, timber, roof sheeting and any other recoverable materials from the demolition of the existing grandstand structures, staircases, lift shafts and back of house areas.

Concrete elements will be pulverized to separate the concrete from the reinforcement and stressing cables. The resulting crushed aggregate will be recycled as base course and the ferrous components recycled as scrap metal.

The demolition contractor will be required to arrange the sorting of waste materials generally to ensure maximum recycling is achieved.

Some of this work will have to occur on site however the demolition contractor will likely remove the pre-cast components from the stands intact and remove them from site for crushing and recycling elsewhere where space restrictions, noise and dust are less of a problem.

### Hazardous Materials

Prior to commencing demolition or excavation activities, appropriate investigations will be undertaken to assess all structures, coverings, finishes and soils to identify any hazardous materials that may exist. All hazardous materials will be handled and disposed of in strict accordance with statutory and EPA requirements and guidelines.

- All general mixed demolition waste materials will be disposed of at the landfill facility located in Kurnell.
- Contaminated waste and/or hazardous materials will be disposed of at the Lucas Heights Landfill site.
- Recycled and separated waste such as bricks, concrete and steelwork will be transported to the St Peters facility.

All loads of rubbish shall be securely covered to prevent spillage during removal from site. Records of all contaminated waste and dockets showing disposal at legally operating waste management facilities shall be kept at all times.

### Recycling of Construction Waste

All employees shall be informed of the need to maintain a clean working environment. Waste material generated by the works shall be minimised or recycled as appropriate. Separate bins are to be provided for the sorting of recyclable waste and records kept of all waste removed from site detailing where waste was taken, type of waste and how it was disposed of.

### General Requirements

All waste management issues arising during demolition, construction and operational stages including likely quantities, proposed destinations and best practices for safe handling and disposal, will be in accordance with WorkCover's Occupational Health and Safety requirements.

## 15.0 ENVIRONMENTAL MANAGEMENT PLAN

The **Environmental Management Plan** (EMP) is a procedural document which outlines the environmental goals of the project including:

- The measures to be implemented
- The timing of the implementation in relation to the progress of the project
- Responsibilities for implementation and management
- A review process

The EMP will be prepared to address each stage of the project including Site Preparation, Construction and Operation and will demonstrate a commitment to positive environmental management. The EMP will also address the need for environmental safeguards during the project and facilitates the adoption of environmentally sensitive work practices. In addition, the EMP will ensure that there is compliance with the environmental conditions of approval for the project by the Contractor and that all environmental risks are properly managed.

The EMP will incorporate both general environmental requirements that apply to most construction projects together with specific environmental initiatives for this project.

The key objectives of the EMP include:

- Ensuring the works are carried out in accordance with statutory requirements
- Ensuring the works are carried out in such a way as to minimise the likelihood of environmental degradation occurring
- Ensuring the works are carried out in such a way as to minimise the impact of the works on neighbouring properties
- Ensuring that employees engaged in the works comply with the requirements of the EMP
- Providing clear procedures for management of environmental impacts including corrective actions
- Identifying management responsibilities and reporting requirements to demonstrate compliance with the EMP.

A **Construction Environmental Management Plan** (CEMP) and an **Operational Environmental Management Plan** (OEMP) would form an integral part of the EMP consistent with the requirements of ISO9001:2000 and ISO14001. These plans would be prepared prior to commencement of construction by the nominated Contractor. The CEMP and OEMP would be prepared following assessment of the project and would serve as a working document typically including the following:

- Establishment of environmental goals and objectives
- Conditions of project approval
- List of actions, timing and responsibilities
- Supervision protocols, fully identifying areas of responsibility for environmental management
- Statutory requirements, licenses and approvals required
- A structured reporting system detailing all relevant matters on a regular basis
- Procedures and forms for documentation and reporting of issues
- Standard specifications incorporating environmental safeguards
- Training of personnel in environmental awareness
- Guidelines for emergencies, contact names and corrective actions for non-conformance
- Process surveillance and auditing procedures
- Review procedures and protocols for modification of the CEMP and OEMP

- Complaint handling procedures
- Site management and control procedures
- Monitoring procedures
- Quality assurance procedures

### Erosion & Sediment Control

An Erosion and Sediment Control Plan shall be prepared detailing the location of temporary erosion and sedimentation control measures including fencing and silt traps as necessary and shall be installed before the Works commence. Existing drainage lines likely to be affected by the worksite shall be identified and protected using siltation barriers, placed such that they intercept run-off from exposed surfaces. Temporary drainage controls for the site compound, including diversion drains and perimeter banks, shall be established as appropriate to cope with significant quantities of stormwater coming down Paddington Lane into the site compound. Stockpiles of materials or debris shall be kept clear of water courses and/or surrounded by sediment filter fencing, sandbags or straw bale barriers wrapped in geofabric securely fixed to the ground.

Erosion and sedimentation controls shall be monitored on a weekly basis and immediately following a rainfall. The controls shall be maintained or replaced as appropriate. Sediment shall be cleared when traps have collected 50-60% of capacity and the residue disposed of in an appropriate manner.

## 16.0 MATERIALS HANDLING

Materials and equipment for the project will be lifted and moved by a combination of tower cranes, mobile cranes, materials hoists and forklift trucks. The site compound is able to accommodate areas for the stockpiling of material in addition to providing reasonable vehicle access for the full length of the new grandstand structure.

When constructed, the Members Dining Terrace at Level 2 will act as the principal loading platform for feeding the upper levels of the grandstand superstructure using either the tower crane or an Alimak men & materials hoist.

The tower cranes will be strategically located to provide maximum lifting capacity to remove or install large steelwork roof trusses during demolition and construction of the grandstands. Unlike Stage 1 redevelopment works, there should not be many instances where materials have to be double-handled due to restricted access.

Concrete pumps, either static or mobile, will be used throughout the project for placing concrete.

Amongst the lessons learnt on Stage 1, will be the assembly of roof trusses on the Level 3 concrete deck prior to lifting into place to reduce 'hook time' necessary for the tower crane. This helps safeguard the programme at a time when progress of the works is very much dictated by lifting capacity.

Refer to Appendix 1 for details of crane and hoist locations.

## 17.0 DEMOLITION & SERVICE DIVERSIONS

The existing structures and buildings that form the Maintenance compound will be the first items to be demolished to provide vehicle circulation space and lay-down areas. Provided the necessary works in relation to the existing electrical switchroom were completed, the Properties Office and adjacent structures would also be demolished early as part of the Site Establishment activities.

Following the establishment of a secure site compound, protection scaffolds and termination of live services the contractor will start to remove the grandstand roof sheeting and stockpile them ready for transporting off site. The main steelwork roof trusses will then be removed in one or two sections depending on the weight being lifted, location and size of crane being used. The sections will be lifted down to ground level where they will be cut into lengths and loaded into large skips.

When the metal roof decking and steelwork trusses have been removed, the cranes will then lift off any pre-cast concrete components that form part of the terrace structure, again stockpiling them ready for transportation from site for processing. The insitu concrete elements of the structure will be progressively demolished using a combination of concrete saws, hydraulic pulverisers, jack-hammers and rock breakers.

The extent of the proposed site compound as indicated on the Construction Zone & Access Plan should provide the demolition contractor with sufficient space to stockpile separate materials, land large sections of roof decking/truss on the ground, provide queuing areas for trucks and access the full length of the existing building for large items of plant and equipment.

## 18.0 MAIN CONTRACT CONSTRUCTION ACTIVITIES

### Substructure

The proposed ground floor slab levels mean that the bulk dig requirement and extent of retaining wall is only nominal. Continuous flight auger (CFA) type of piling is to be used to minimize excessive noise problems. Following piling, the construction of pad foundations and core bases will commence in conjunction with below slab services and connections. Any hazardous materials encountered during excavation works will be subject to specialist removal methods and disposal according to EPA guidelines.

### Superstructure

Completion of the ground floor slab is a major programme milestone that enables the reinforced concrete frame to the grandstand superstructure to progress at a relatively faster rate. Special consideration will be given to the sequence of work that will enable the Lower Concourse seating to be available to the public on event days during November 2009. There will be a requirement to temporary waterproof the Level 3 Concourse slab to safeguard the services and finishes below until such time the roof decking has been fixed.

### Roof Steelwork, Pre-cast Seating & Roof Sheeting

The structural steel roof trusses to Stage 2 are significantly larger than those used in Stage 1 and will take longer to assemble. It may be possible to assemble a major part of the roof truss at ground level provided there is sufficient space in the compound and it is within the required lifting radius of the tower crane. The installation of pre-cast concrete seating sections have to be co-ordinated with the steel roof trusses, cross-bracing and roof purlins in order to maintain overhead lifting access for all activities.

### Light Towers

Both light towers Nos 1 and 6 are to be relocated. Light tower No1 is to be moved out of the new grandstand structure and into the adjacent service yard. Light tower No6 which is adjacent to the Member's Stand is moved backwards and mounted on top of the new lift shaft concrete structure.

### Services Installations

The installation of services is a critical activity due to the large number of facilities on four levels within the grandstands and will have to commence as soon as the formwork and support system has been removed. This work can progress simultaneously with the construction of the structural steelwork, seating and roofing.

### Finishes

There are significantly more services and finishes in Stage 2 compared to Stage 1 so it is important that services and blockwork partitions commence as soon as practicable which will in due course enable finishing trades to start progressively on each level. The new grandstands includes a central maintenance area, bars, serveries, offices, function rooms, dining rooms, private suites, Trustees areas, food outlets, media facilities, public concourse, keg room, cool rooms and extensive toilet facilities most of which demand a high level of services and finishes.

### Specialist Fitout

The programme contemplates a high degree of overlap on site with respect to the Main Contractor and SCSGT specialist fitout contractors. There will be a requirement in the tender documents that the Main Contractor provide the necessary attendance and access. The specialist fitout activities will have to be included in the Contractor's work schedules with handover dates for specific areas agreed as necessary.

## 19.0 PROGRAMME

### Overall Duration & Assumptions

The Stage 2 structural frame and roofing programme is based on the AW Edwards construction durations achieved for the various elements during the construction of Stage 1. There is a basic assumption that extensive investigations and surveys are undertaken in advance to fully understand the ground conditions and whether hazardous materials are present prior to substructure works commencing. It is important that 'no surprises' are encountered in the groundworks and that the foundation design documents reflect existing conditions. The lessons learnt during the design and construction of Stage 1 will be implemented to reduce the risk of extensions of time claims.

Also, the current programme intent is that all necessary relocations and service diversions are completed prior to Early Works (demolition etc) commencing.

Stage 2 has significantly better access to the full length of the new grandstands and has been taken into account in the programmed durations of the various elements. Two tower cranes have been indicated to provide adequate coverage which can be supplemented by mobile craneage if the need arose.

The overall duration of Stage 2 works is 81 weeks which includes a 7 week delay allowance.

### Phasing

It is proposed that the construction encompass the entire Stage 2 development as one zone and not be phased. Phasing options were initially considered and investigated as a means of reducing the relocation requirements and maintaining income from seating during the demolition and construction process. However, when all factors are taken into account, phasing creates more problems, expense, prolongs the works and is difficult to maintain adequate access and egress within individual zones.

There is a requirement built into the programme that most of the Lower Concourse seating be available in advance by 9 November 2009.

### Contingency

The proposed construction programme has a target completion date of 19 July 2010. A 7 week delay allowance (10%) has then been added to bring the Project Completion date to 6 September 2010. In relation to the date of the first Ashes Test Match, the completion of Stage 2 redevelopment works has an additional 'buffer' of 17 weeks.

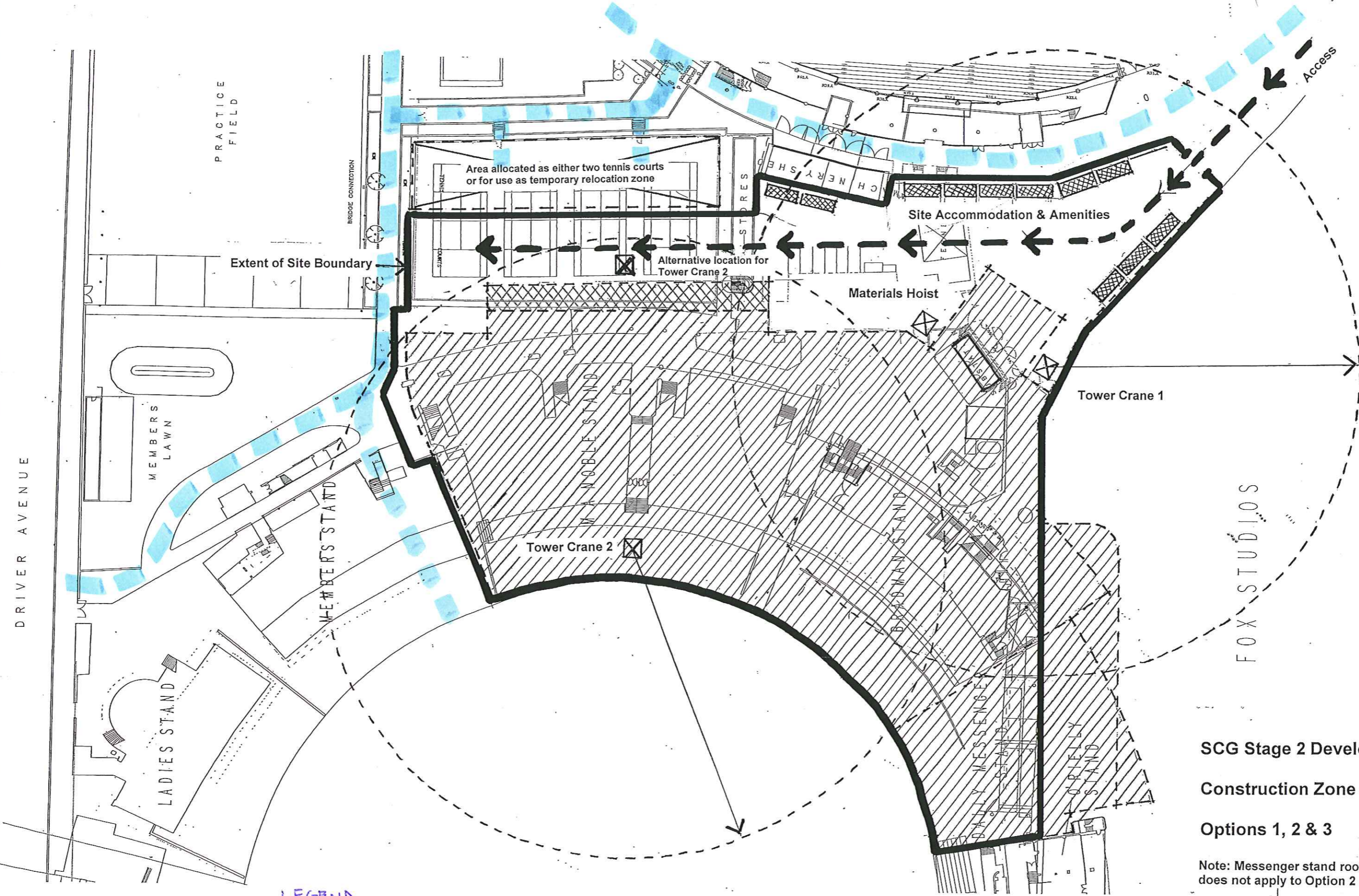
### Completion Date

The current completion date is 6 September 2010 which is 4 weeks before the start of the 2010/2011 cricket season. Refer to Appendix 4 for details of the proposed Construction Programme.

## 20.0 AMELIORATIVE MEASURES

This Construction Management Plan contains the details of predicted impacts and methods of construction likely to be adopted by the Main Contractor together with proposed solutions to ameliorate the environmental impact of the works on adjoining neighbours and SCSGT operations.

The effective implementation of the proposals contained within this Construction Management Plan need to be adopted by the successful tenderer and further developed with affected stakeholders to ensure all aspects of the construction process are properly managed and monitored.



**LEGEND**

SCSGT Operational Circulation (vehicular + pedestrian)

**SCG Stage 2 Development**  
**Construction Zone & Access**  
**Options 1, 2 & 3**

Note: Messenger stand roof extension does not apply to Option 2

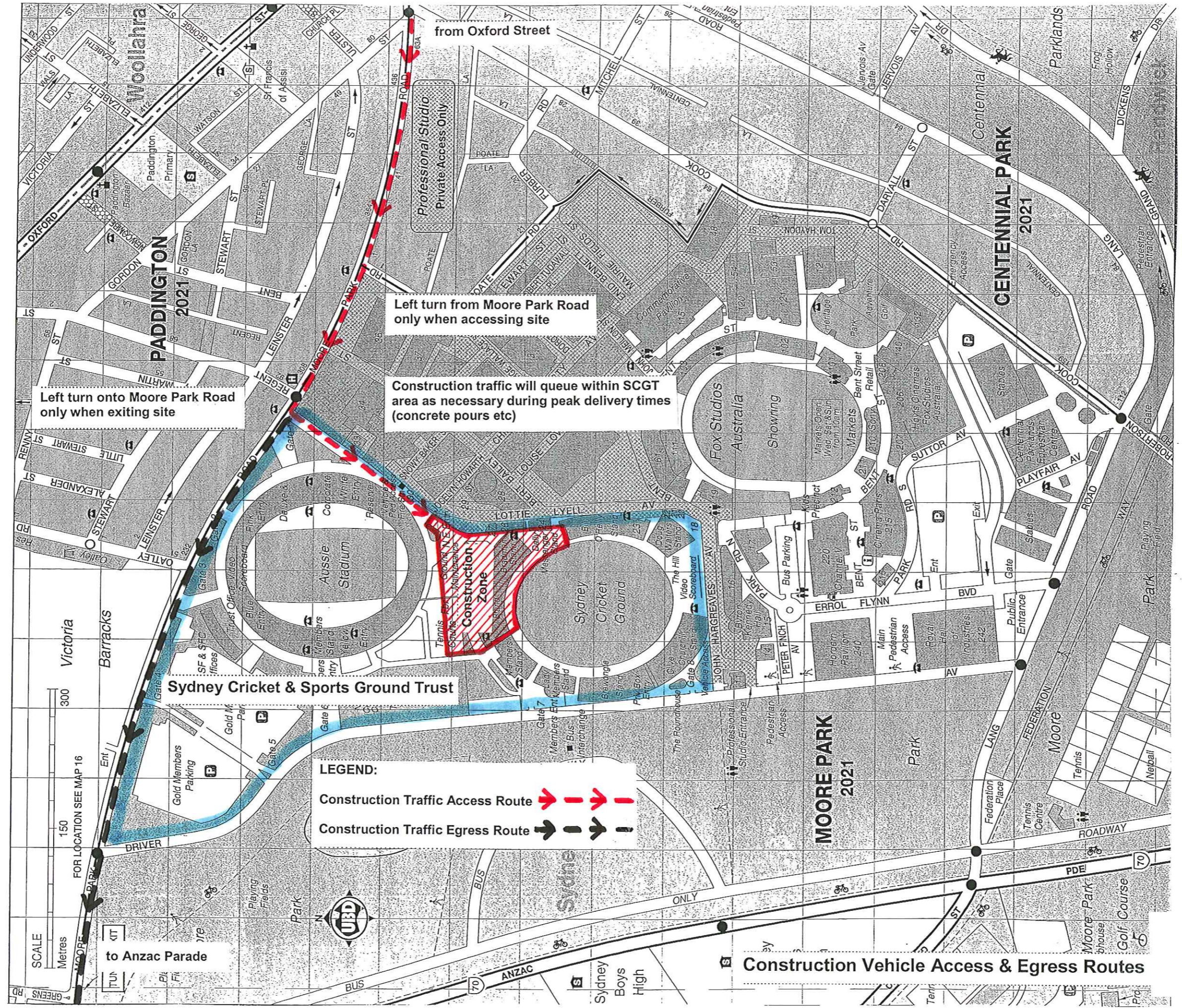
Sydney Cricket and Sports Ground Trust  
**SCG & SFS Site plan**

**APPENDIX 1**

© COPYRIGHT

**Robertson+Marks**  
 ARCHITECTS

120 Chalmers Street  
 Sunny Hills 2010  
 Sydney Australia  
 Ph (61 2) 9319 4388  
 Fax (61 2) 9319 7338  
 Email ma@marks.com.au





Left turn onto Moore Park Road only when exiting site

Left turn from Moore Park Road only when accessing site

Construction traffic will queue within SCGT area as necessary during peak delivery times (concrete pours etc)

Professional Studio Private Access Only

**LEGEND:**  
 Construction Traffic Access Route   
 Construction Traffic Egress Route 

SCALE Metres  
 300  
 150  
 FOR LOCATION SEE MAP 16

to Anzac Parade

Construction Vehicle Access & Egress Routes

Sydney Cricket Ground Stage 2 - Bradman/Noble Redevelopment				Relocations Schedule (including Early Works)		McLachlan Lister		Rev: C - Updated following Relocations Meeting on 25/06/08
Ref:	Existing Item / Facility	Current Location	Manager	Current Proposal	Current Cost Allowance	SCGT Final Sign-off Date for Agreed Solution	Date Works on Site are to Commence	In Principle Agreement with General Manager Yes / No
CZ-01	Switchroom (33KVA)	Zone between stadiums	Properties (MB)	Preferred solution is to relocate EA switchroom to Moore Park Road with Trust switchroom staying local for distribution around site. Webb Australia to advise strategy in relation to dialogue with EA and potential shared costs. Nominal cost of \$1m excludes HV mains and builders work. Re-use of existing cable main issue to be resolved.			1-Sep-08	
CZ-02	Transformer (TX6)	Zone between stadiums	Properties (MB)	Refer item CZ-01			1-Sep-08	
CZ-03	Tennis Courts	Zone between stadiums	Membership (CM)	Options include reconfiguring reduced area to provide two courts only or arranging for off-site facilities. Decision to be made by Membership (CM).			5-Jan-09	
CZ-04	Properties Office	Zone between stadiums	Properties (MB)	Proposal is to relocate Properties Office to existing offices adjacent terrace above swimming pool. Nominal fitout works required. Catering Offices also to be included. DM to provide layout for discussion.			5-Jan-09	
CZ-05	Maintenance Compound	Zone between stadiums	Properties (MB)	Maintain part of compound during construction. McLL to revise Construction Zone layout. Buildings to be partially demolished for access. On-site storage to be minimised. Some materials can be stockpiled in the undercroft to SFS on Paddington Lane with remainder in Hill Grandstand.			5-Jan-09	
CZ-06	Brick Storage Building	Zone between stadiums	Properties (MB)	Maintain as much of the existing buildings as possible during construction.			9-Feb-09	
CZ-07	Main Server Room	Zone between stadiums	Properties (MB)	Examine feasibility of permanent relocation to Hill Grandstand. Provision to be maintained as it serves the whole site. Alternative is to provide a temporary container (6mx3m) adjacent to fibre optic loop possibly in garden area of SFS. Technical details to be determined.			1-Sep-08	

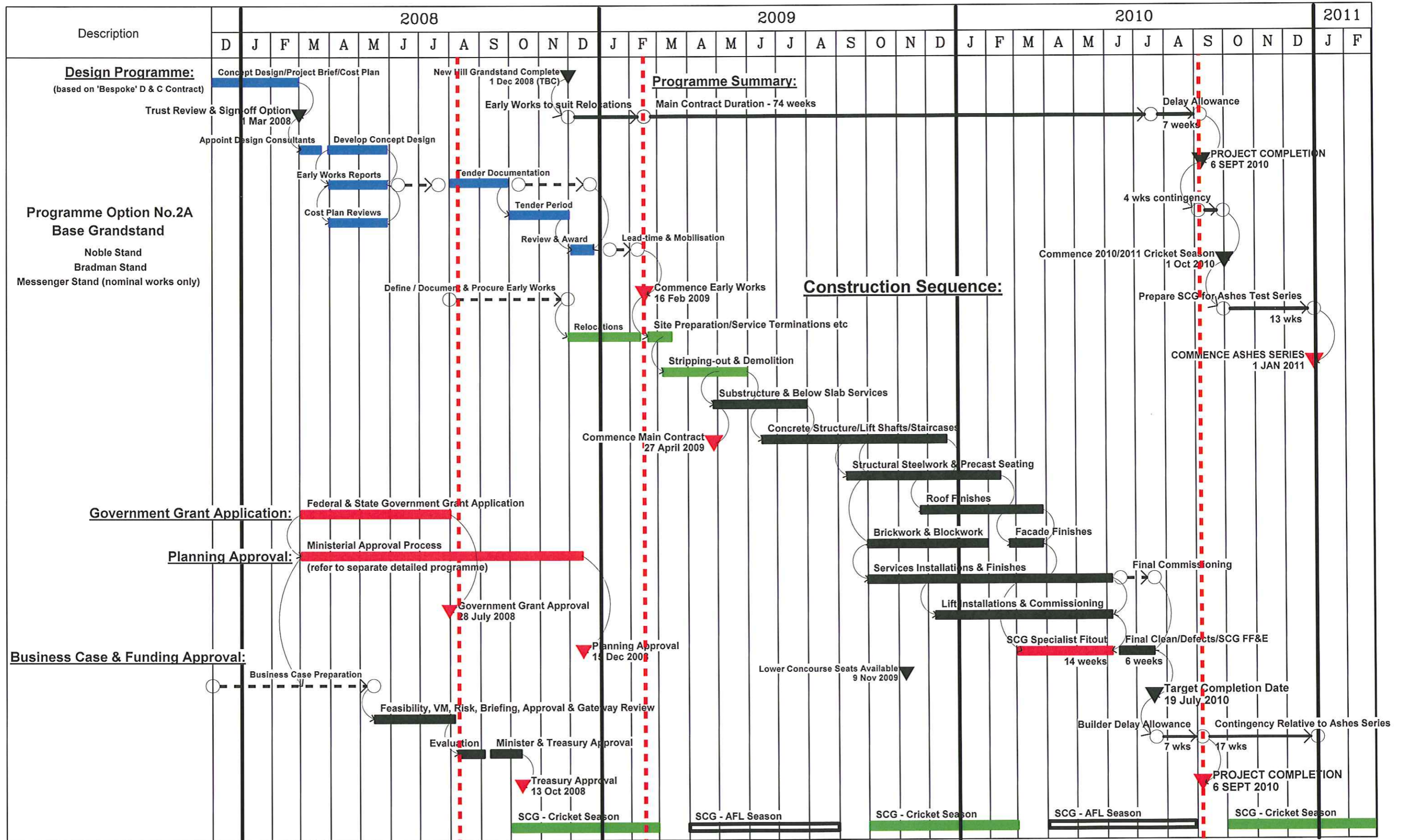
Sydney Cricket Ground Stage 2 - Bradman/Noble Redevelopment				Relocations Schedule (including Early Works)		McLachlan Lister		Rev: C - Updated following Relocations Meeting on 25/06/08
Ref:	Existing Item / Facility	Current Location	Manager	Current Proposal	Current Cost Allowance	SCGT Final Sign-off Date for Agreed Solution	Date Works on Site are to Commence	In Principle Agreement with General Manager Yes / No
CZ-08	Lighting Mast No.1	Zone between stadiums	Properties (MB)	Lighting Mast No.1 to be dismantled and stored off-site. Storage location to be determined.			9-Feb-09	
CZ-09	Lighting Mast No.6	Zone between stadiums	Properties (MB)	Lighting Mast No.6 remains in position in the current design.			N/A	
CZ-10	Outside Broadcast Vans	Zone between stadiums	Commercial ( )	OBV's for SFS to be located adjacent Construction Zone in Paddington Lane. OBV's for SCG to be located on Driver Avenue adjacent Brewongle Stand. Commercial to consult as necessary.			9-Feb-09	
CZ-11	Carbon Dioxide Tank	Zone between stadiums	Properties (MB)	Alternative feed to O'Reilly Stand to be provided via extension from new Hill Stand.			5-Jan-09	
CZ-12	Storage Shed	Zone between stadiums	Properties (MB)	Keep as long as possible then dismantled as necessary.			9-Feb-09	
CZ-13	Fire Alarm Panel	Zone between stadiums	Properties (MB)	Dismantled as necessary. Relocate O'Reilly connection to Driver Avenue. Ladies & Members Stand already relocated. Bassett to detail as an essential Early Work.			9-Feb-09	
CZ-14	Turnstiles	Zone between stadiums	Commercial ( )	Turnstiles to be dismantled and stored for possible re-use elsewhere. Storage location to be agreed.			9-Feb-09	
CZ-15	Car Parking Bays	Zone between stadiums	Commercial ( )	All car parking to Paddington Lane be relocated to Gold Members Car park.			9-Feb-09	
CZ-16	Lawn Roller Memorabilia	Zone between stadiums	Properties (MB)	Relocate to alternative site. Location to be agreed.			9-Feb-09	
NS-01	Catering Reception & Offices	Noble Stand - Ground Level	Commercial ( )	8 workstations to relocate to 'Pool Offices' with Properties. Remainder go to Hill Grandstand. Need to check strongroom requirements. DM to provide layouts of office allocation. Check feasibility of using terrace area for temporary accommodation.			5-Jan-09	

Sydney Cricket Ground Stage 2 - Bradman/Noble Redevelopment				Relocations Schedule (including Early Works)		McLachlan Lister		Rev: C - Updated following Relocations Meeting on 25/06/08
Ref:	Existing Item / Facility	Current Location	Manager	Current Proposal	Current Cost Allowance	SCGT Final Sign-off Date for Agreed Solution	Date Works on Site are to Commence	In Principle Agreement with General Manager Yes / No
NS-02	Staff Toilets & Amenities	Noble Stand - Ground Level	Properties (MB)	Need to examine combining with matchday staffroom and permanently relocating.			5-Jan-09	
NS-03	Maintenance Workshops	Noble Stand - Ground Level	Properties (MB)	Maintenance facilities generally to be relocated to two locations: 1. Undercroft of SFS (adjacent Paddington Lane). 2. Hill Grandstand. Exhaust system, acoustic treatment, wire cages etc required for maintenance activities. Some vehicles can be parked adjacent Indoor Cricket Centre. Storage on site to be minimised. Properties to audit salvage items prior to move. Insufficient space in Hill Grandstand for bulk materials storage.			5-Jan-09	
NS-04	Pump/Switch/Telecom/MATV & CCTV Rooms	Noble Stand - Ground Level	Properties (MB)	Telecom the main problem. Potential to relocate in advance to new PABX room which is scheduled for later in the year. BL to confirm feasibility.			1-Sep-08	
NS-05	Trustees Suite	Noble Stand - Level 1	Trustees	Space allocation in Hill Grandstand in 200 seat Dining Area for nominated events only. Alternatively provide tables within Function Rooms. Trustees CEO to confirm which option.			5-Jan-09	
NS-06	Members Lounge/Bar/Toilets	Noble Stand - Level 1	Membership (CM)	Seat allocation within upper deck and concourse of Brewongle Stand.			5-Jan-09	
NS-07	Members Lounge/Bar/Toilets	Noble Stand - Level 2	Membership (CM)	Seat allocation within upper deck and concourse of Brewongle Stand. Propose to hold 'Dining' in Indoor Cricket Centre for key matches.			5-Jan-09	
NS-08	Kitchen/Coolrooms/Stores	Noble Stand - Level 2	Commercial (RM)	Utilise existing kitchen facilities generally with no requirement to replace the facility during Stage 2 construction. Temporary coolrooms may be required on occasion. Indoor Cricket kitchen can be used as necessary. Check-in facility can be relocated to suit (SFS events can use Ladies, SCG events can use SFS check-in). Equipment to be salvaged from existing main kitchen prior to demolition.			9-Feb-09	

Sydney Cricket Ground Stage 2 - Bradman/Noble Redevelopment				Relocations Schedule (including Early Works)		McLachlan Lister		Rev: C - Updated following Relocations Meeting on 25/06/08
Ref:	Existing Item / Facility	Current Location	Manager	Current Proposal	Current Cost Allowance	SCGT Final Sign-off Date for Agreed Solution	Date Works on Site are to Commence	In Principle Agreement with General Manager Yes / No
NS-09	Kitchen/Coolrooms/Stores	Noble Stand - Level 3	Commercial ( )	Refer item NS-08			9-Feb-09	
NS-10	Plantrooms & Toilets	Noble Stand - Level 3	Properties (MB)	Close down during construction.			9-Feb-09	
NS-11	Media Area & Camera Platform	Noble Stand - Level 4	Commercial ( )	Media area to relocate to Churchill Private Suites and Hill Grandstand. Camera platform facility to be accommodated in existing Churchill platform and Hill Grandstand. Temporary scaffold platform to Lower Concourse of Noble. Stephen Kelly proposal to be formalised. Print media also goes to Level 7 Brewongle. Media dining may go to Indoor CC. Catering requires an operational solution.			9-Feb-09	
Services	Water Supply	General	Properties (MB)	Located on boundary wall to Fox Studios. Assumed that pipe can remain in position but may need protection during construction.			9-Feb-09	
Services	Hydrant & Fire	General	Properties (MB)	Terminate at suitable location bearing in mind demolition and excavation requirements.			9-Feb-09	
Services	Gas Supply (town gas)	General	Properties (MB)	Terminate at suitable location bearing in mind demolition and excavation requirements.			9-Feb-09	
Services	Fibre Optic Loop	General	Properties (MB)	Fibre optic loop serves registers, computers, turnstiles etc. Needs to be terminated at suitable location bearing in mind demolition and excavation requirements.			9-Feb-09	

Sydney Cricket Ground Stage 2 - Bradman/Noble Redevelopment				Relocations Schedule (including Early Works)		McLachlan Lister		Rev: C - Updated following Relocations Meeting on 25/06/08
Ref:	Existing Item / Facility	Current Location	Manager	Current Proposal	Current Cost Allowance	SCGT Final Sign-off Date for Agreed Solution	Date Works on Site are to Commence	In Principle Agreement with General Manager Yes / No
Services	Borewater Irrigation Station & Switching	Zone between stadiums	Properties (MB)	It is proposed to locate a temporary water tank and connection points on the Lower Concourse during the construction of Stage 2. Safe access from the pitch during demolition and construction will be the main issue. It is likely the tank will require a separate compound with overhead protection. The tank will require moving to suit the construction process. The facility needs to be operational prior to demolition commencing and is to be classified as an essential early work activity. Relocating the supply pipes and connection points will be a key issue to resolve. Design and methodology to be developed.			9-Feb-09	
Services	Petrol/Diesel Fuel Tanks Ground Contamination	Zone between stadiums	Properties (MB)	Early works investigation item to determine extent of problem.			1-Sep-09	
BM-01	Visitors Changing	Bradman/Messenger - Ground	Commercial ( )	Visitors Changing for AFL - can they go to Member's Pavillion? Used by Cricket/AFL & Media. Potential alternative areas include Hill Grandstand or Indoor Cricket Centre. Fitout cost will be involved.			5-Jan-09	
BM-02	Coolroom	Bradman/Messenger - Ground	Commercial ( )	Refer item NS-08			9-Feb-09	
BM-03	Corporate Hospitality	Bradman/Messenger - Level 1	Commercial / BD	Refer to Hirer's Schedule. Relocate to Hill Grandstand in 500 seat Dining Area. May be issue in relation to compensation.			5-Jan-09	
BM-04	Public Lounge	Bradman/Messenger - Level 2	Commercial / BD	Hirers Sydney Swans and Cricket Club (NSW) affected by closure. Relocate to Hill Grandstand in 200/500 seat Dining Areas. May be issue in relation to compensation. Provide architectural layouts to validate area utilisation.			5-Jan-09	
BM-05	Catering Area	Bradman/Messenger - Level 3	Commercial ( )	Close down during construction			9-Feb-09	
BM-06	Staff Area & Toilets	Bradman/Messenger - Level 3	Properties (MB)	Check current area function?			9-Feb-09	





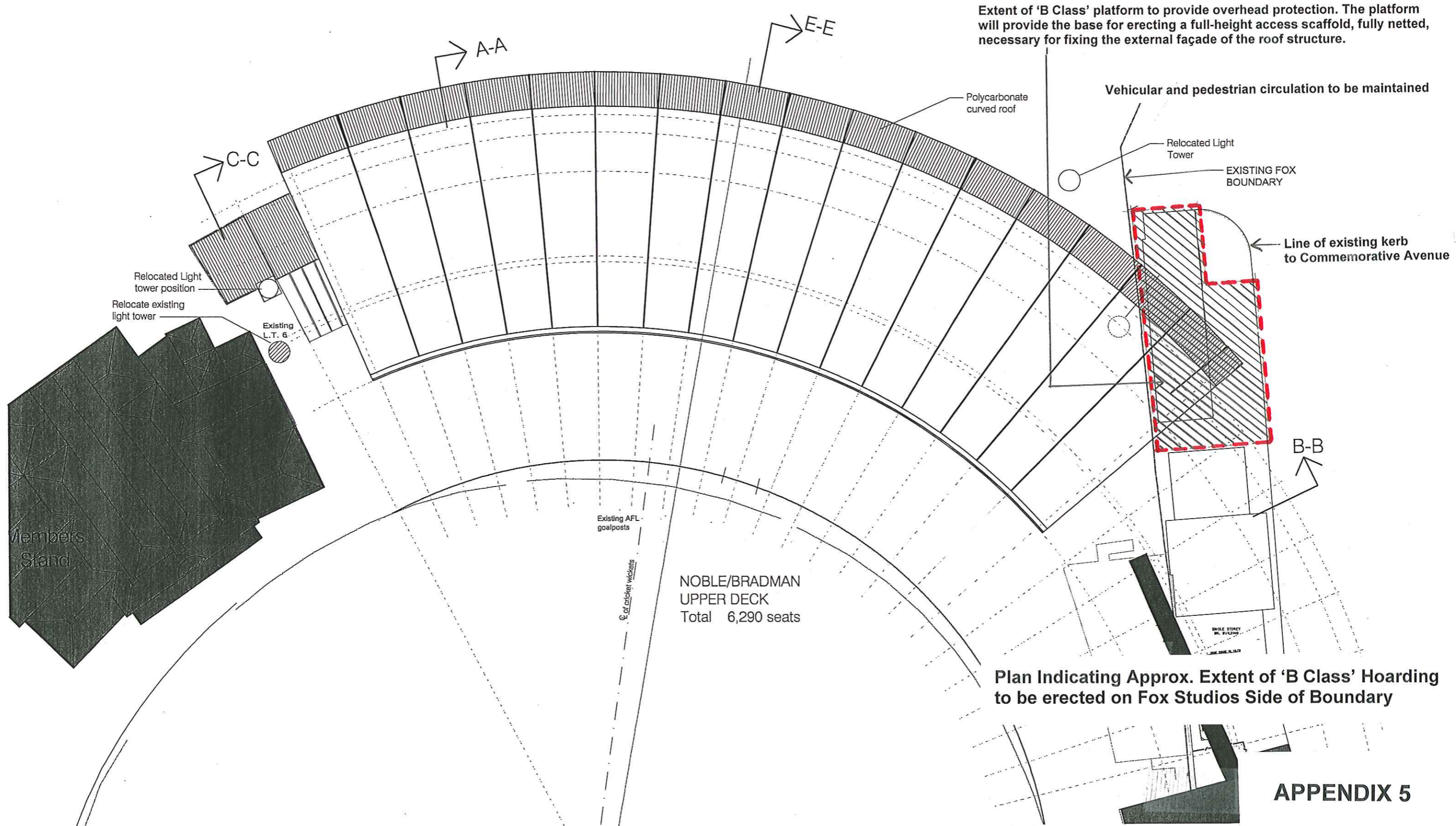
Programme Ref: McLL/SCG/Option-2A/Rev-4

Sydney Cricket & Sports Ground Trust

SCG Stage 2 - Bradman/Noble Redevelopment

Programme Option No.2A - Base Grandstand - Combined Site  
Noble Stand, Bradman Stand & Dally Messenger Stand (nominal)

**APPENDIX 4**



Plan Indicating Approx. Extent of 'B Class' Hoarding to be erected on Fox Studios Side of Boundary

**APPENDIX 5**

**ROOF PLAN  
SCG STAGE 2 - NOBLE BRADMAN REDEVELOPMENT**

**Cox Robertson + Marks**  
 11-17 Buckingham Street, Surry Hills.  
 Sydney, 2010, N.S.W. Australia.  
 Telephone: 612 9319 4388 Fax: 612 9319 7338  
 Email: mail@marks.com.au

Joint Venture Architects    The Cox Group Pty Ltd    ACN 002 535 891  
 ROBERTSON+MARKS Pty Ltd    ACN 003 127 222



Date: 20-08-08  
 Dwg No.: PA-08 A  
 Scale: 1:250@A1 / 1:500@A3