

## Drawing List

- DA-001 Cover Sheet
- DA-002 Level Basement B05 Floor Plan
- DA-003 Level Basement B04 Floor Plan
- DA-004 Level Basement B03 Floor Plan
- DA-005 Level B02 - Pirrama Road & Entry Water Front Works
- DA-006 Level B02 - Pirrama Road & Entry Waterfront Works
- DA-007 Level B01 - Pirrama Road & Entry Water Front Works
- DA-008 Level 00 Pymont Street Floor Plan (Retail)
- DA-009 Level 01 Floor Plan (Main Gaming)
- DA-010 Level 02 Floor Plan (Terrace)
- DA-011 Level 03 Covered Deck & Roof Plan
- DA-012 Pirrama Rd Street Elevations
- DA-013 Edward - Union Street Elevations
- DA-014 Sections A-A & B-B
- DA-015 Section C-C
- DA-016 Perspective Rendering Pirrama Rd Entry\_ Daytime
- DA-017 Perspective View of Pirrama Road
- DA-018 Not used
- DA-019 External Materials and Finishes
- DA-020 Pirrama Road Facade Details

## Project Star



Pirrama Road  
Pymont  
NSW

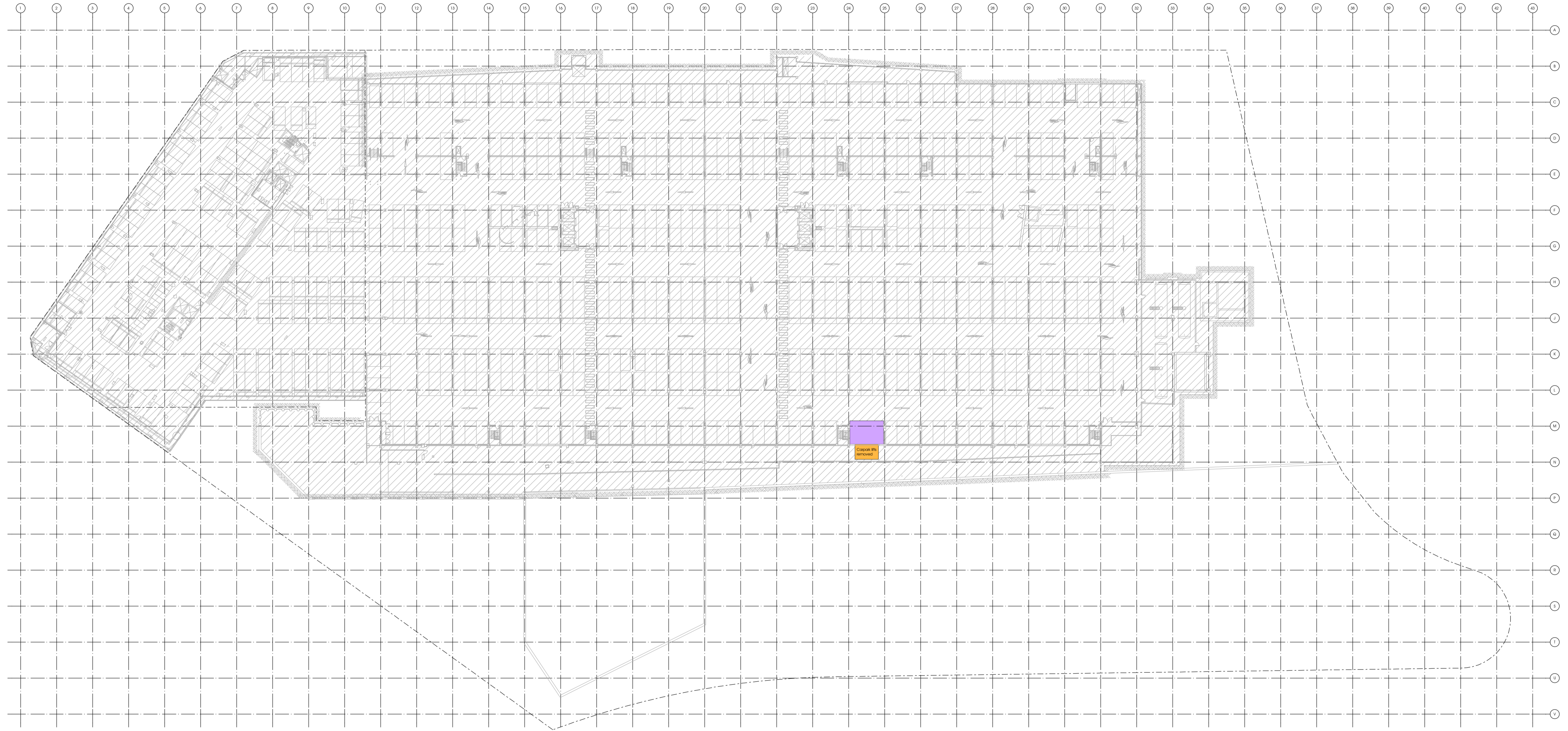
Department Of Planning  
19th August 2009

fitzpatrick + partners

-  No change from DOP submission Dec 08
-  Pedestrian circulation
-  Vertical access
-  Retail
-  Food and beverage
-  Casino
-  Unenclosed gaming
-  New roof terrace
-  Outdoor deck
-  New plant and store



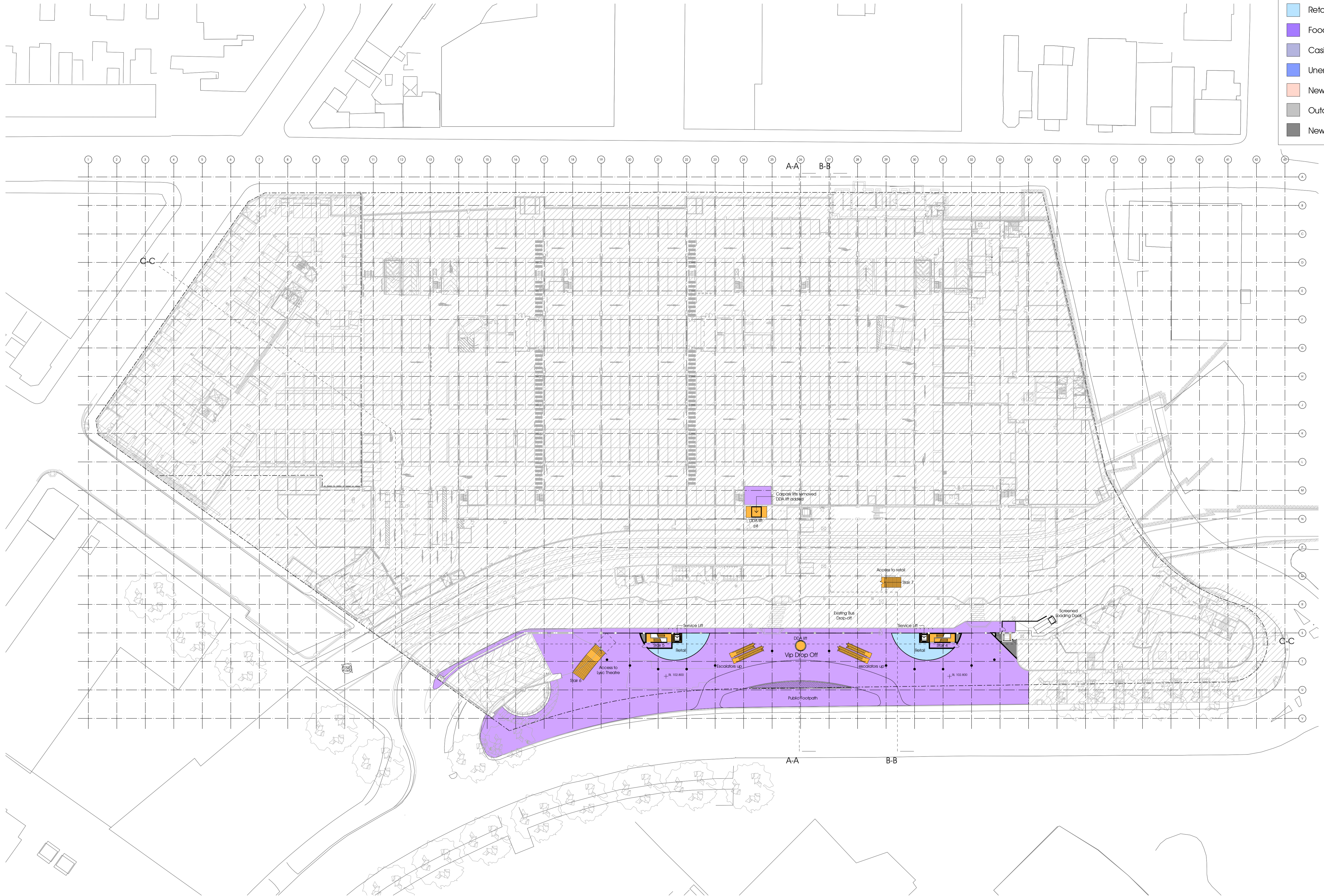
-  No change from DOP submission Dec 08
-  Pedestrian circulation
-  Vertical access
-  Retail
-  Food and beverage
-  Casino
-  Unenclosed gaming
-  New roof terrace
-  Outdoor deck
-  New plant and store

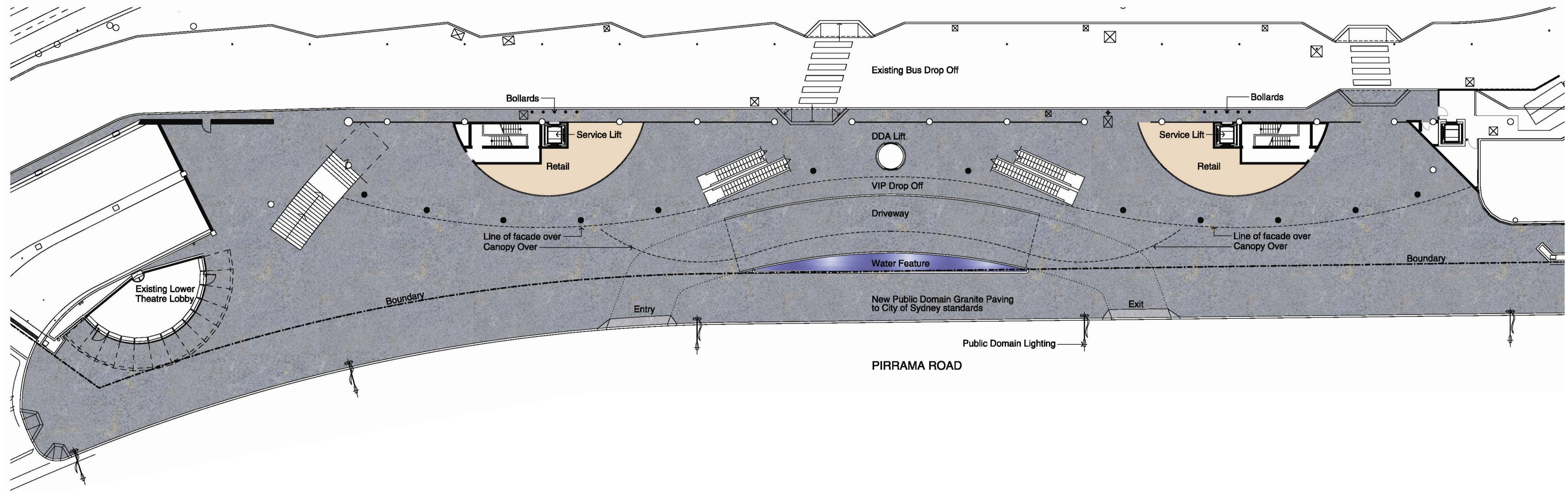


-  No change from DOP submission Dec 08
-  Pedestrian circulation
-  Vertical access
-  Retail
-  Food and beverage
-  Casino
-  Unenclosed gaming
-  New roof terrace
-  Outdoor deck
-  New plant and store



-  No change from DOP submission Dec 08
-  Pedestrian circulation
-  Vertical access
-  Retail
-  Food and beverage
-  Casino
-  Unenclosed gaming
-  New roof terrace
-  Outdoor deck
-  New plant and store

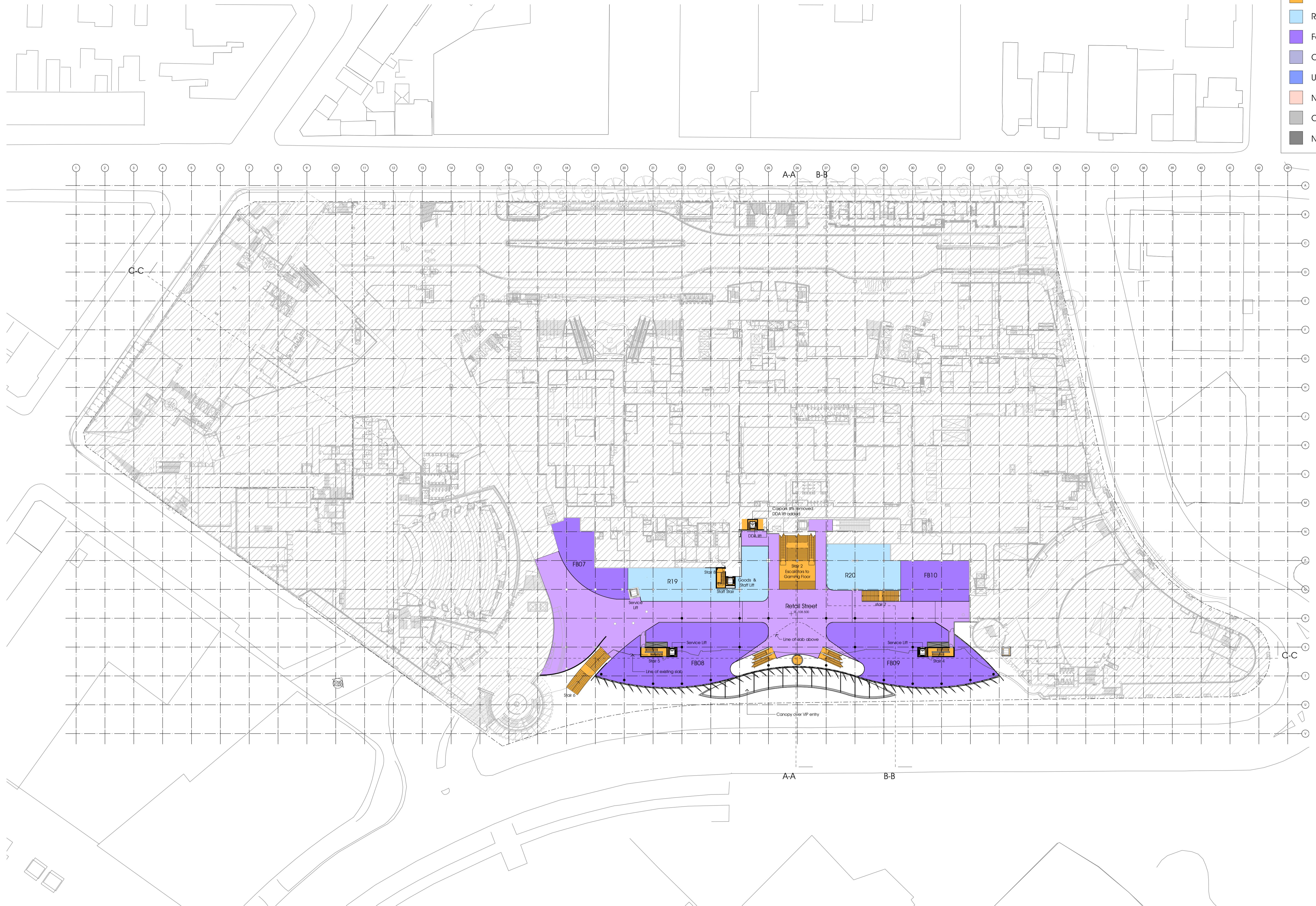




This image has been supplied by Tract Consultants



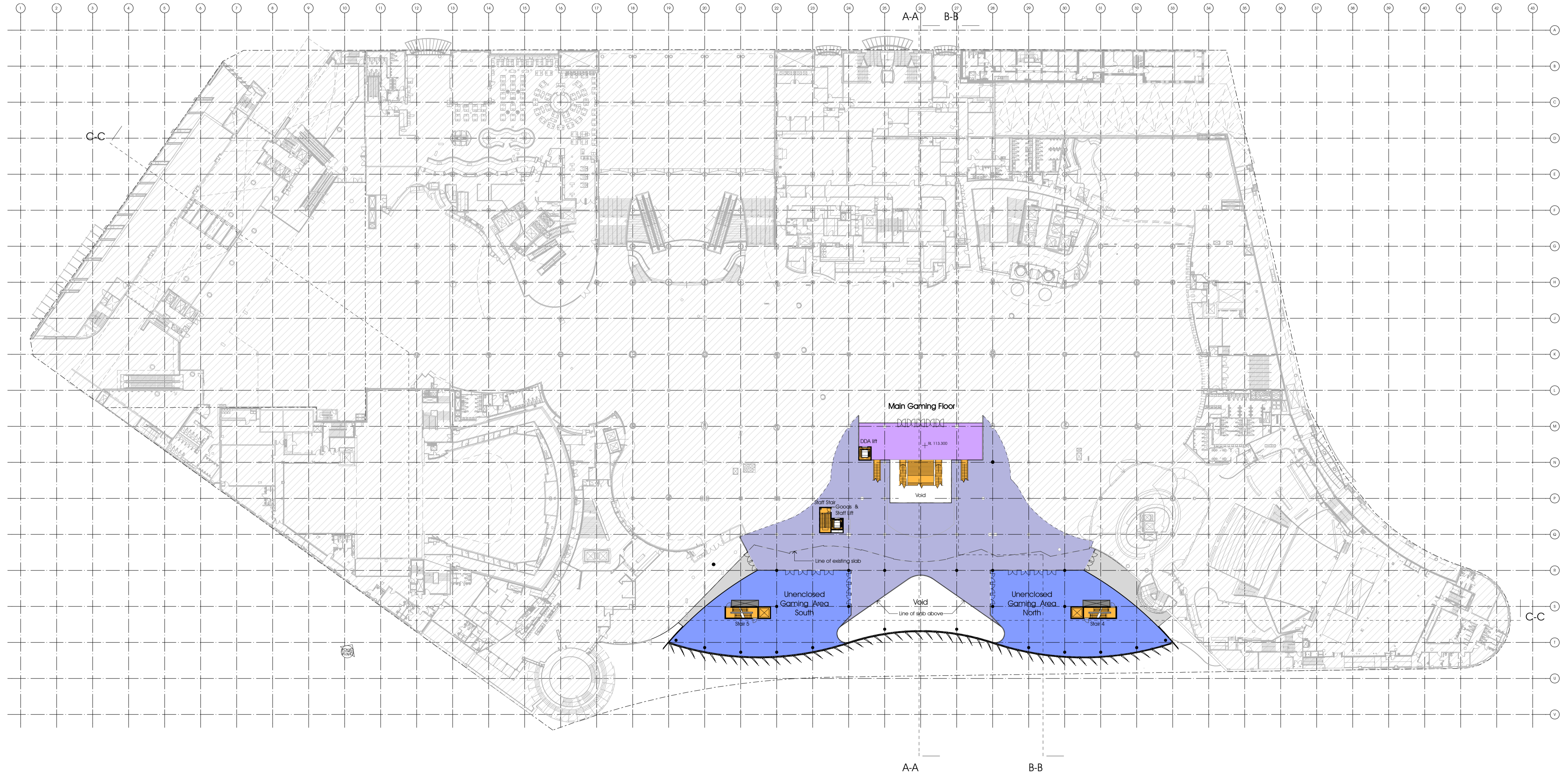
-  No change from DOP submission Dec 08
-  Pedestrian circulation
-  Vertical access
-  Retail
-  Food and beverage
-  Casino
-  Unenclosed gaming
-  New roof terrace
-  Outdoor deck
-  New plant and store






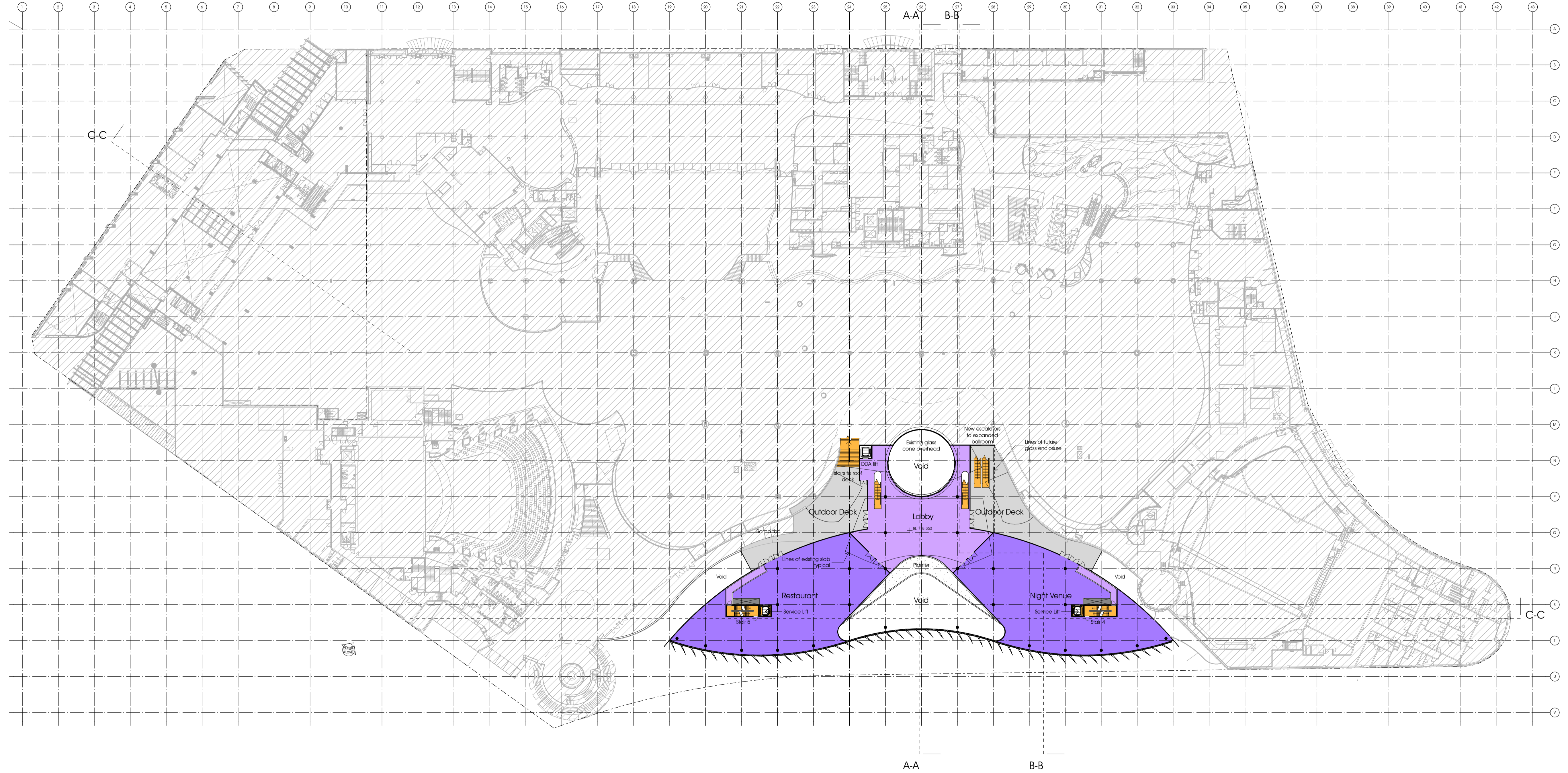
This drawing is issued upon the condition it is not copied, reproduced, or disclosed in any way without prior consent in writing of fitzpatrick+partners. Drawings show design intent only. Shop drawings are to be provided for approval prior to construction or manufacture. Inconsistencies are to be reported to fitzpatrick+partners. Do not scale drawings. Check dimensions before commencing work.

fitzpatrick+partners are not responsible for existing background information as per DOP submission Dec 2008 as supplied by Buchan.

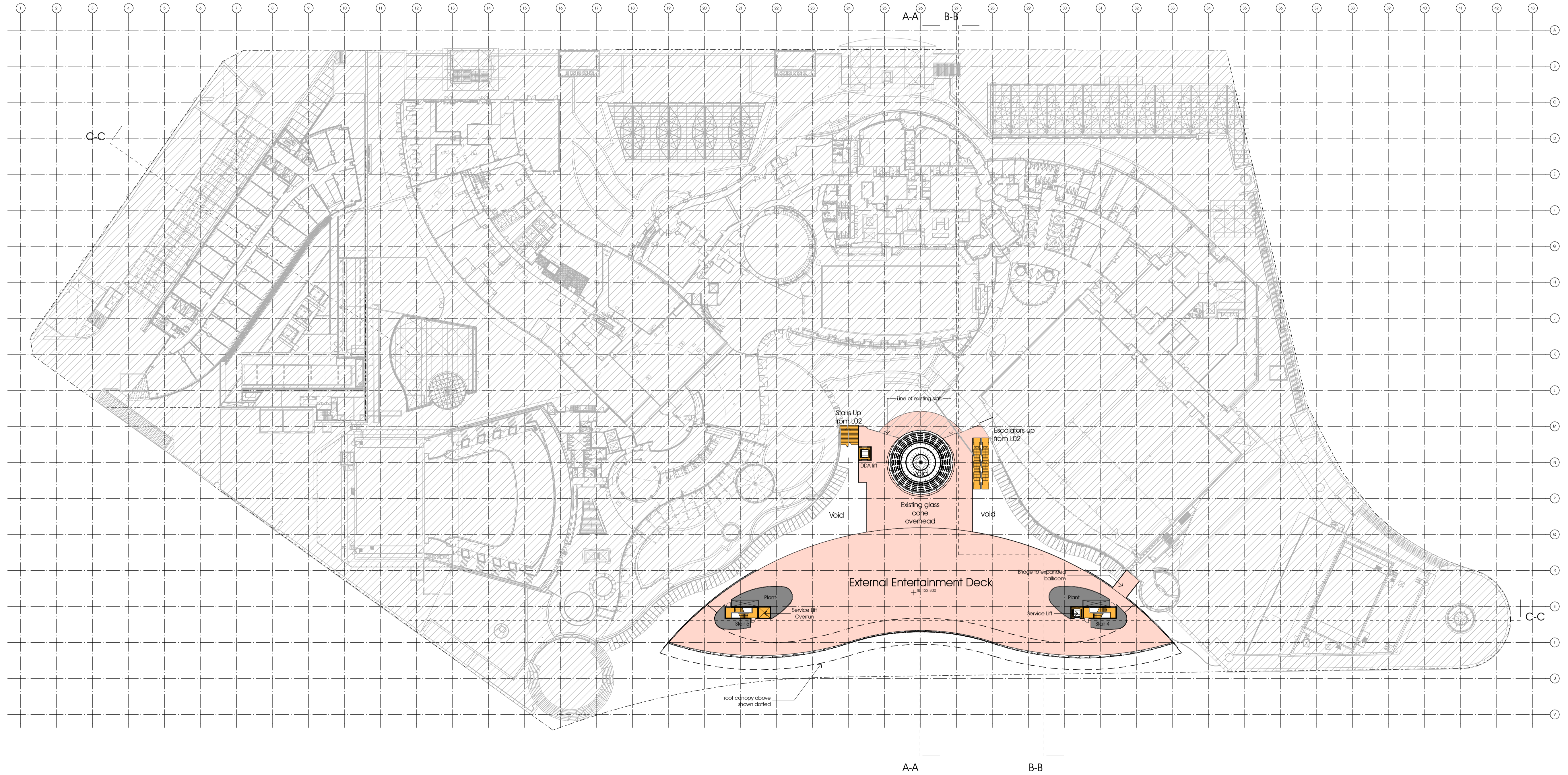
-  No change from DOP submission Dec 08
-  Pedestrian circulation
-  Vertical access
-  Retail
-  Food and beverage
-  Casino
-  Unenclosed gaming
-  New roof terrace
-  Outdoor deck
-  New plant and store



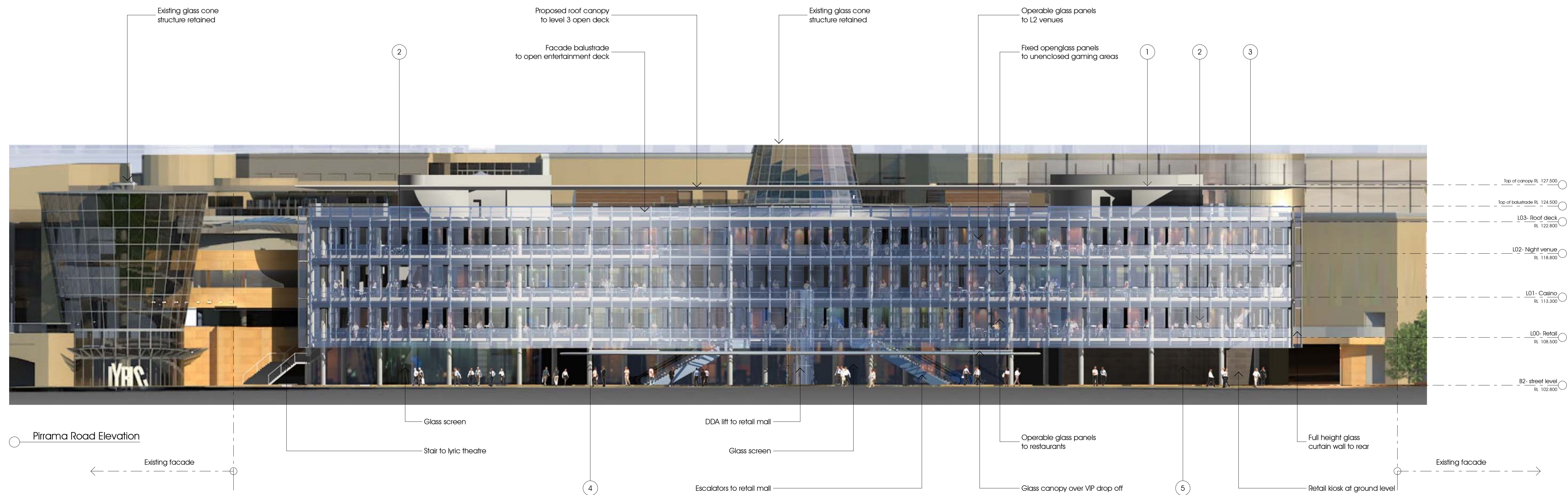
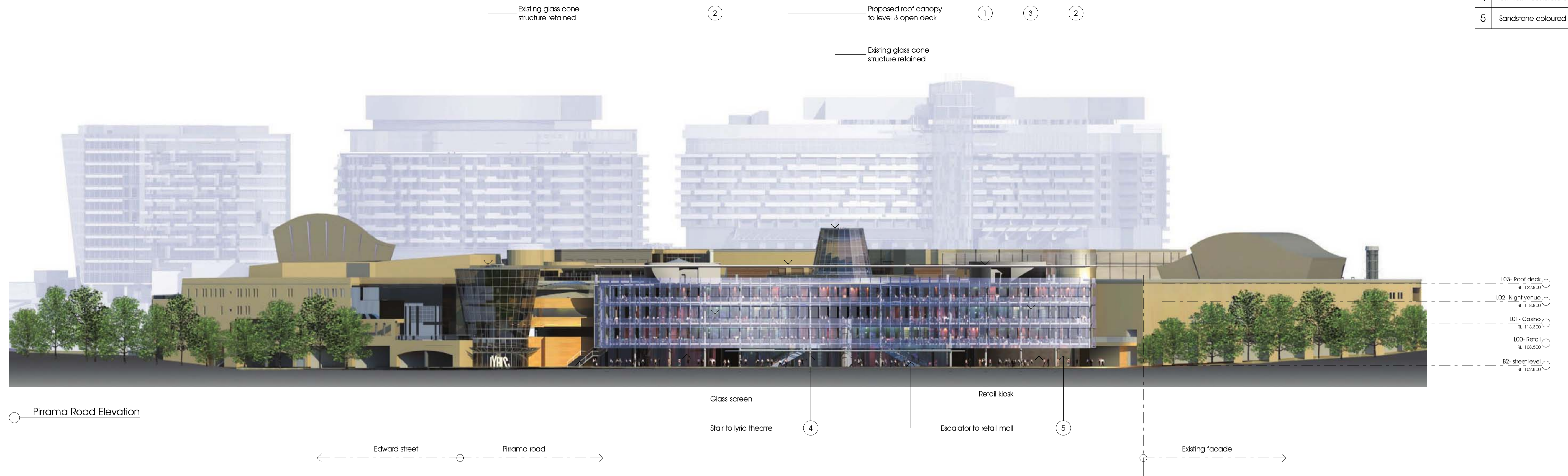
-  No change from DOP submission Dec 08
-  Pedestrian circulation
-  Vertical access
-  Retail
-  Food and beverage
-  Casino
-  Unenclosed gaming
-  New roof terrace
-  Outdoor deck
-  New plant and store



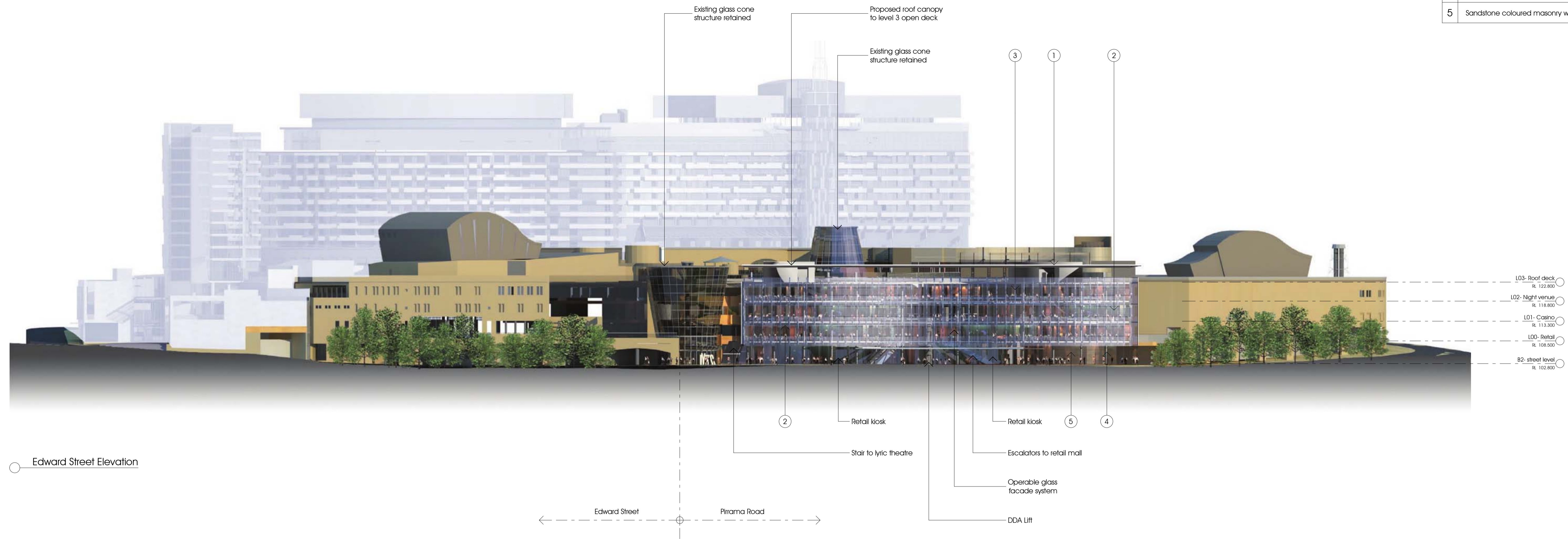
-  No change from DOP submission Dec 08
-  Pedestrian circulation
-  Vertical access
-  Retail
-  Food and beverage
-  Casino
-  Unenclosed gaming
-  New roof terrace
-  Outdoor deck
-  New plant and store



1	Polished/ finished metal fittings, handrails and canopy edges
2	Clear Low Iron Glass
3	Powdercoated aluminium facade components
4	Off-form concrete columns
5	Sandstone coloured masonry walls



1	Polished/ finished metal fittings, handrails and canopy edges
2	Clear Low Iron Glass
3	Powdercoated aluminium facade components
4	Off-form concrete columns
5	Sandstone coloured masonry walls



Edward Street Elevation

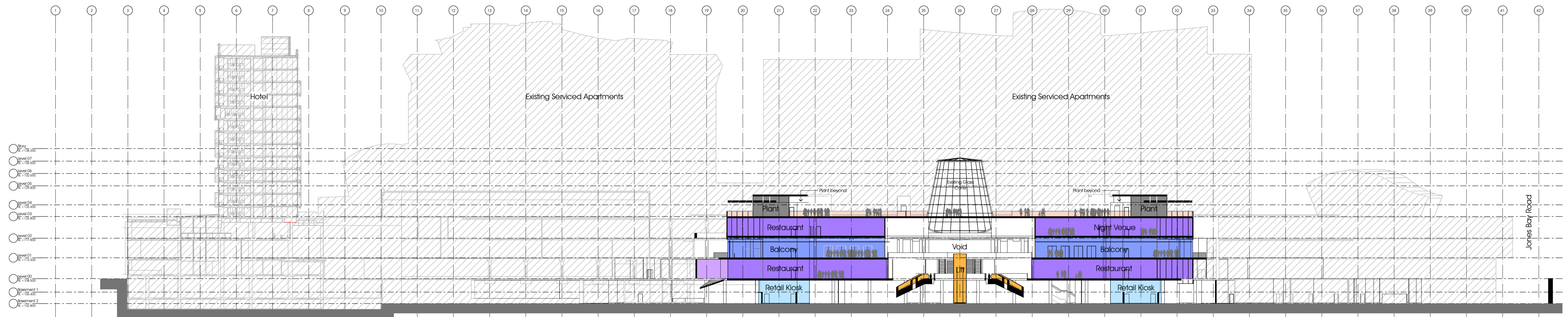


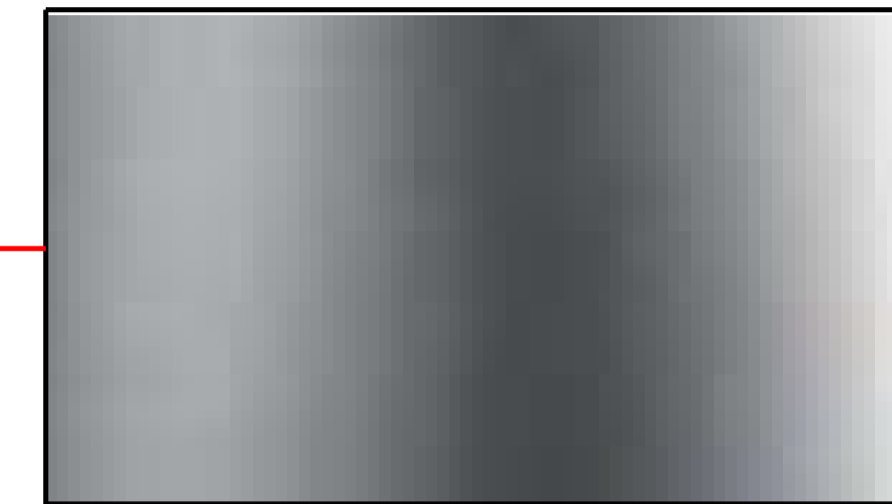
Union Street Elevation

No change from DOP submission  
December 08  
Drawing provided by the Buchan group



-  No change from DOP submission Dec 08
-  Pedestrian circulation
-  Vertical access
-  Retail
-  Food and beverage
-  Casino
-  Unenclosed gaming
-  New roof terrace
-  Outdoor deck
-  New plant and store

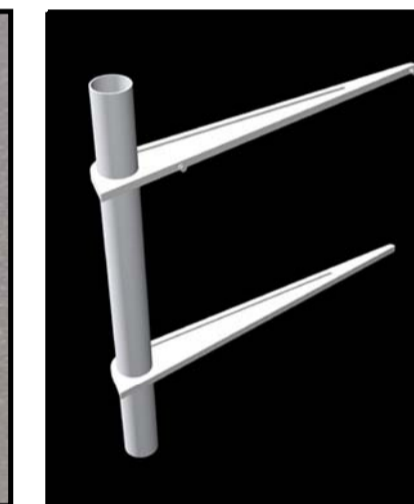




Finish 01  
Polished / finished metal fittings,  
handrails and canopy edges



Finish 02  
Clear Low Iron Glass



Finish 03  
Powdercoated aluminium  
facade components

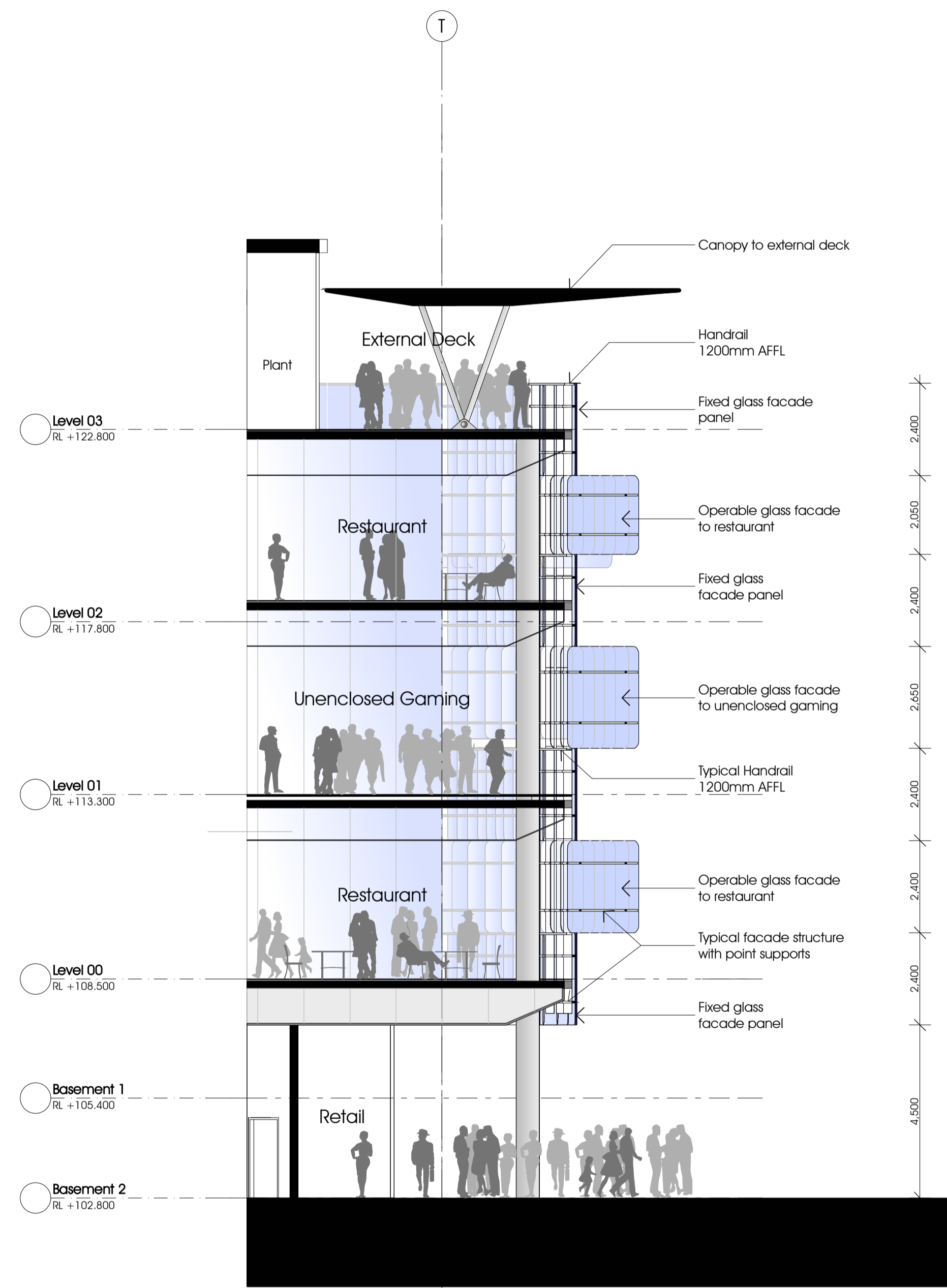


Finish 04  
Off form concrete  
columns

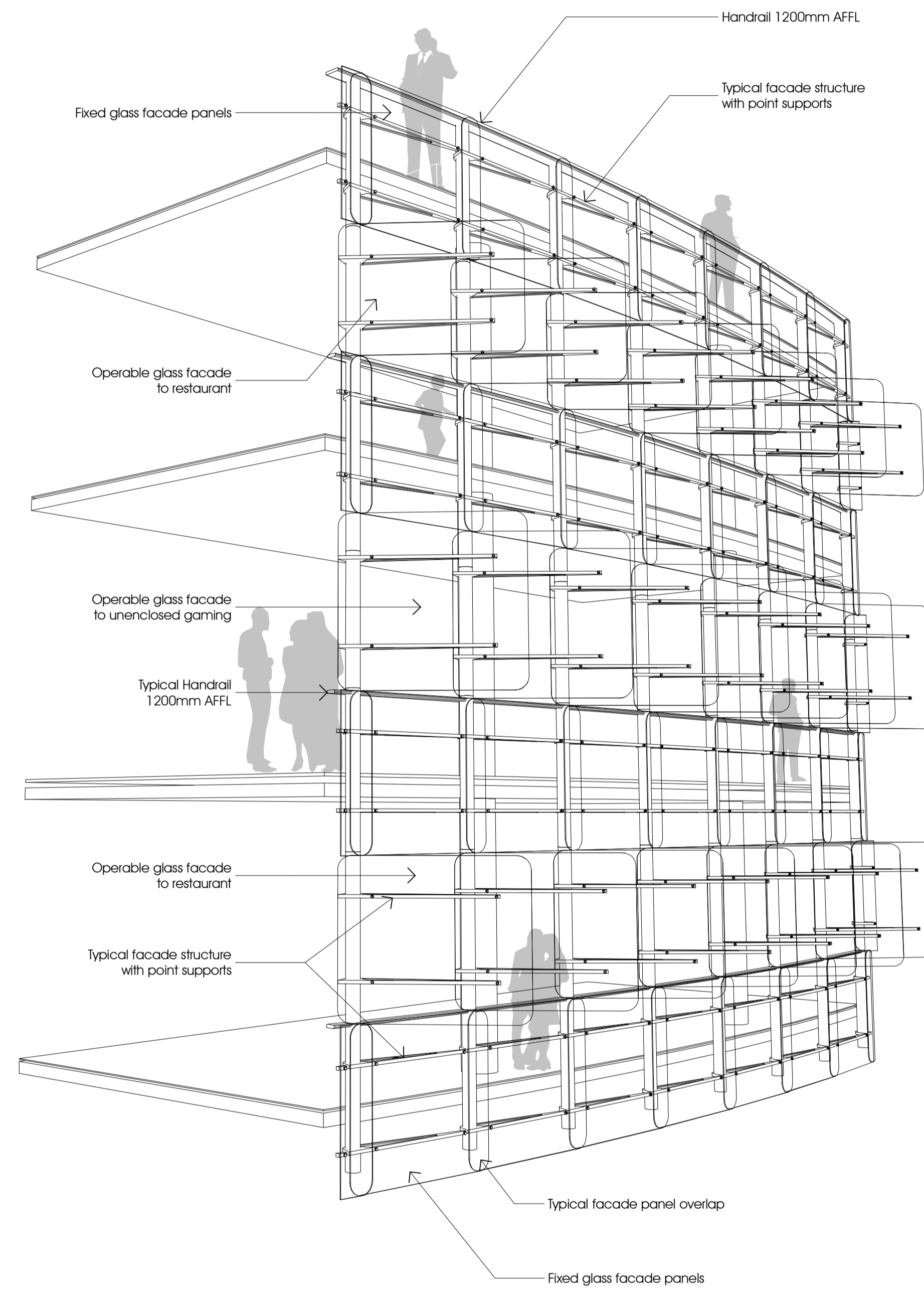


Finish 05  
Sandstone coloured masonry  
walls

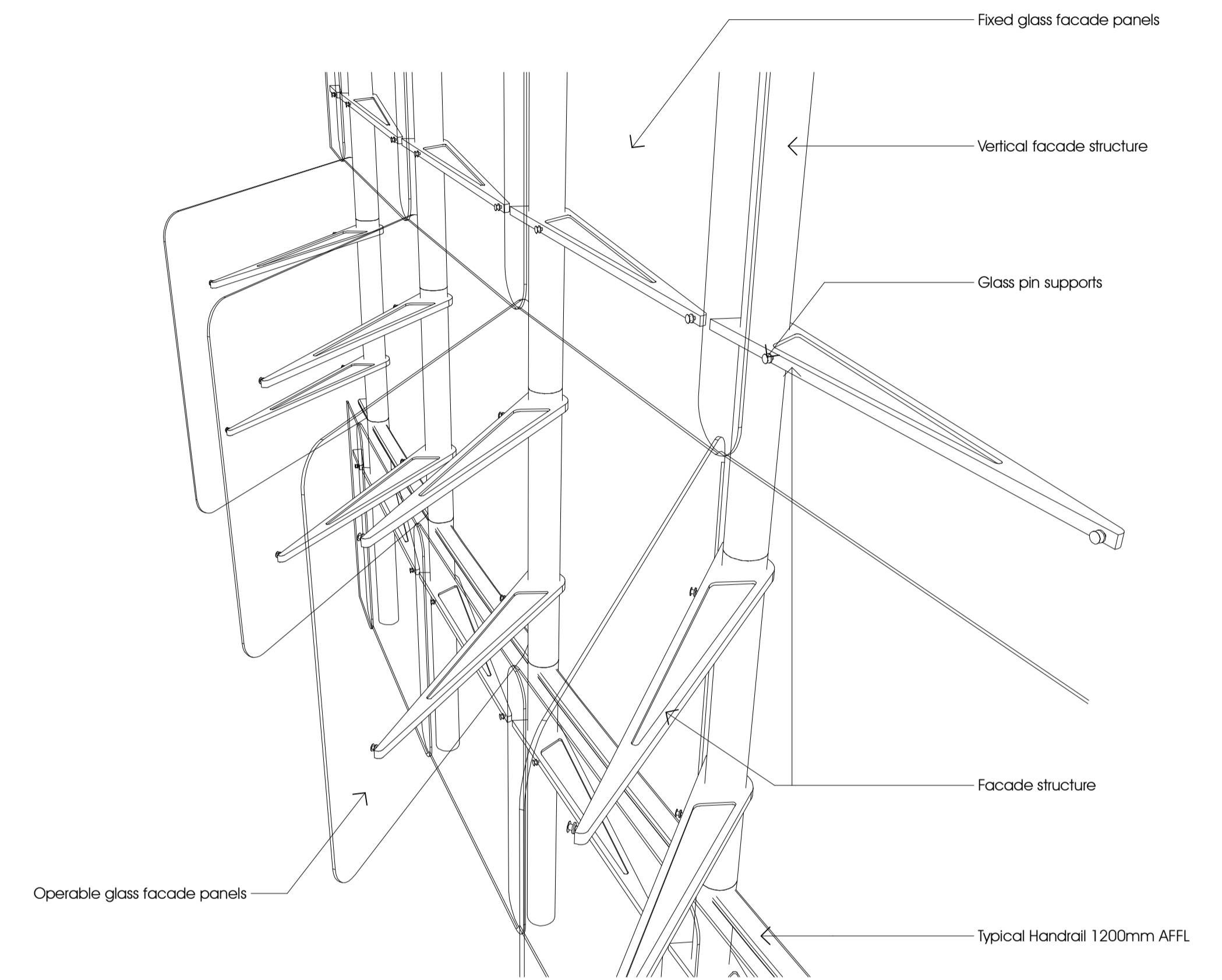
Pirrama Road  
Schedule of External Facade Finishes  
August 2009



Facade Section  
1:100



Facade Perspective



Detailed Facade Perspective

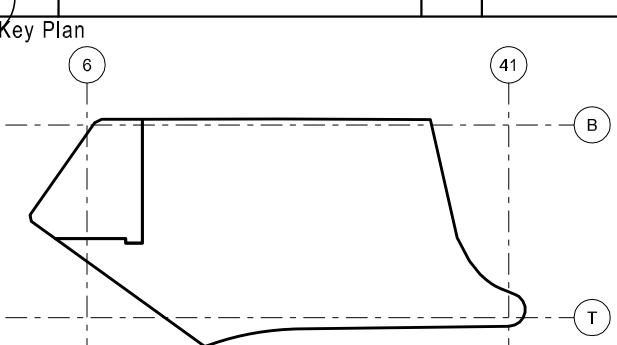


Facade model

Project Consultant Team		
Prefix	Consultant	Discipline
AC	The Buchan Group	Architect (Casino)
AH	The Cox Group	Architect (Hotel)
A	Arup	Acoustic Consultant
BS	Philip Chun & Associates	Building Surveyor
C	Hard & Forrester	Land Surveyor
CL	Tabcorp Holdings Limited	Client (Star City & Tabcorp)
D		Civil - Drainage
DD		Disability Consultant
E	Bassett	Electrical Services
F	Arup	Fire Services
FS	Steve Paul & Partners	Fire - Sprinkler
G		Security & Surveillance
H	Steve Paul & Partners	Hydraulic Services
ID		Interior Design
J		Telephone & Data Ser.
K	Norman Disney Young	Lifts & Escalators
L	Tract Consultants	Landscape Consult.
M	Bassett	Mechanical Services
N	Cundall (St Leonards)	ESD Consultant
PL	Urbis	Planning Consultant
PM	APP Corporation	Project Management
QS	WT Partnership	Casino - QS Reports
R	Davis Langdon	Hotel - QS Reports
R	CB Richard Ellis	Retail Consultant
ST	Taylor Thomson Whitting Pty Ltd	Structural Consultant
T	Arup	Traffic Consultant
U	Hyder Consulting (Aust) Pty Ltd	Facade Consultant

	No work to this area		Vertical access
	New parking		Retail
	Pedestrian circulation		Food & beverage
	Casino		Outdoor casino area
	Landscaped deck		Conference
	New roof terrace		Gold suite
	Residential Hotel		New Plant / Store
	Vehicular circulation		

Revisions - ISSUES			
No.	Description - Issued for	By	Date
00	DA SUBMISSION	MK	01/07/08
01	DA RE-SUBMISSION	SM	09/09/08
02	PPR ISSUE	MK	02/12/08



Consultant

**THE BUCHAN GROUP**

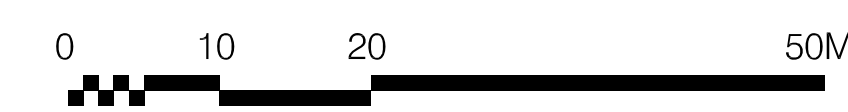
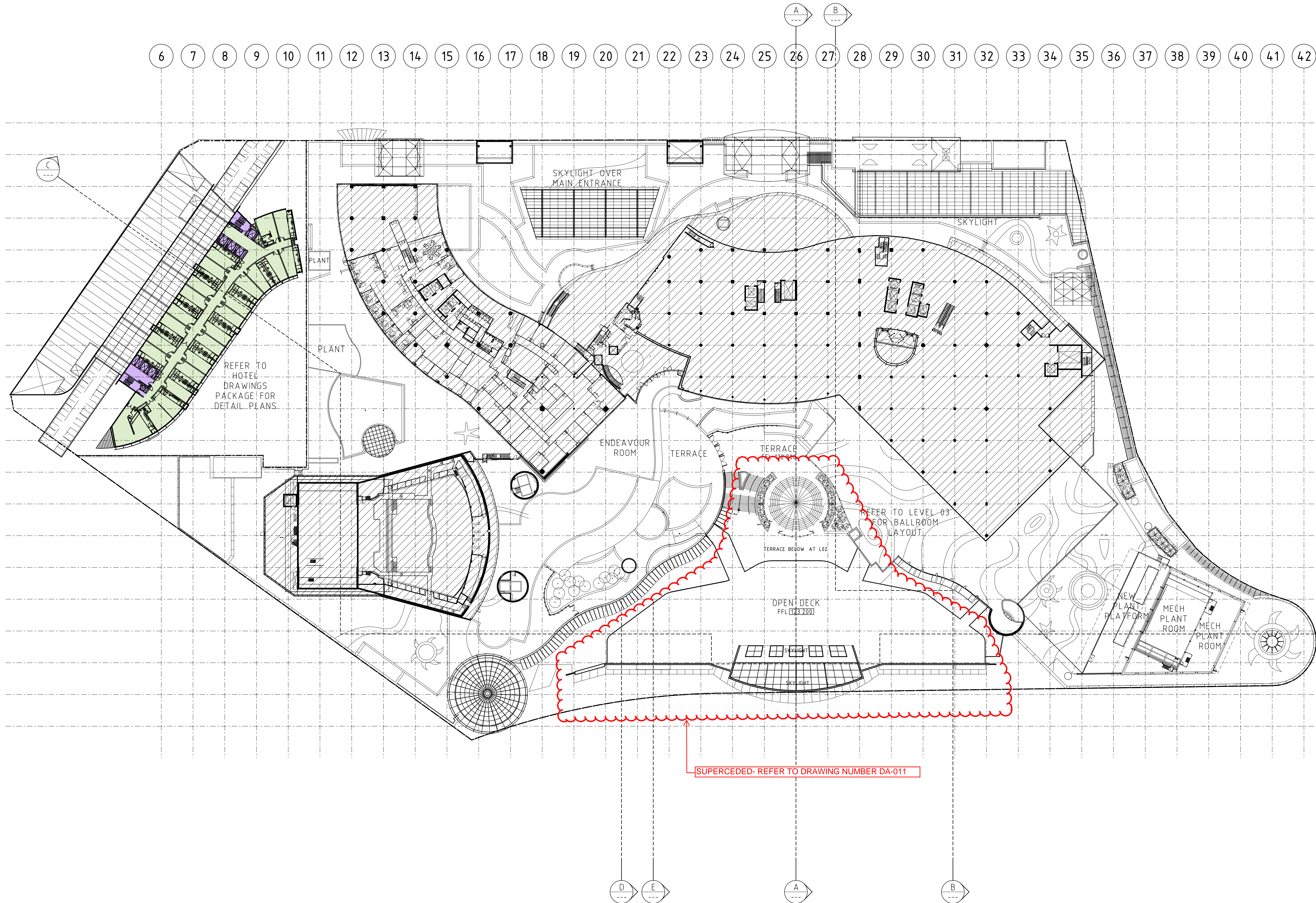
**Buchan Laird & Bowden (Vic) Pty Ltd**  
 A.C.N. 937 272 826  
 Architects Planners & Interior Designers  
 133 Roslyn Street West Melbourne  
 Victoria 3002 AUSTRALIA  
 Tel: +613 9329 1077 Fax: +613 9329 0481  
 Email: tbg@melbourne.buchan.com.au  
 © THE BUCHAN GROUP 2008

Project  
**PROJECT STAR**  
 PYRMONT, SYDNEY

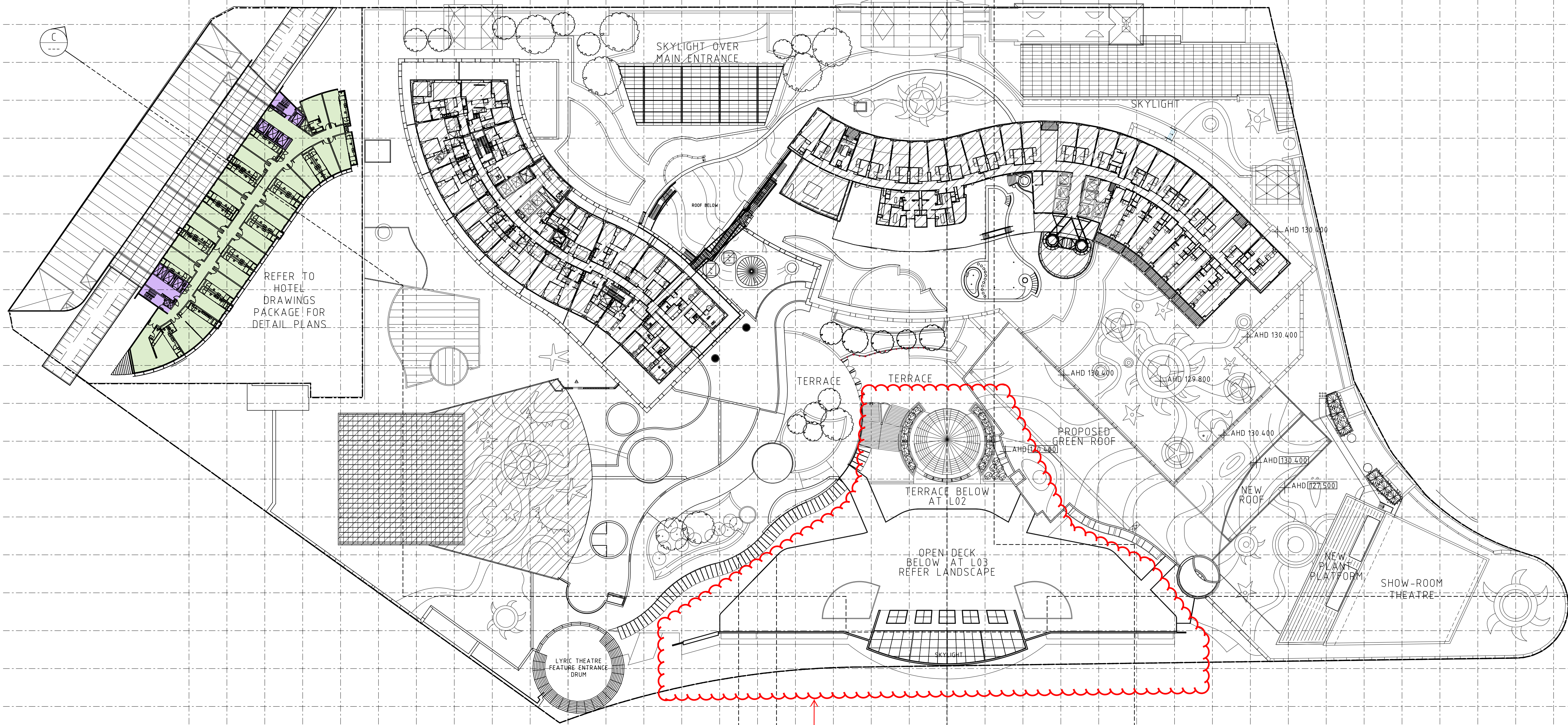
Drawing Title  
**LEVEL 04 COVERED DECK & ROOF PLAN**

Scale	1:500 @ A1
Date	SEPTEMBER 2008
Status	PPR ISSUE

Project Number	Drawing Number	Revision
308024	DA-AC.209	02
Checked By	Approved By	Drawn



6 7 8 9 10 11 12 13 14 15 16 17 18 19 20 21 22 23 24 25 26 27 28 29 30 31 32 33 34 35 36 37 38 39 40 41 42



REFER TO HOTEL DRAWINGS PACKAGE FOR DETAIL PLANS

SUPERCEDED- REFER TO DRAWING NUMBER DA-011

A  
B  
C  
D  
E  
F  
G  
H  
J  
K  
L  
M  
N  
P  
Q  
R  
S  
T  
U  
V

**Project Consultant Team**

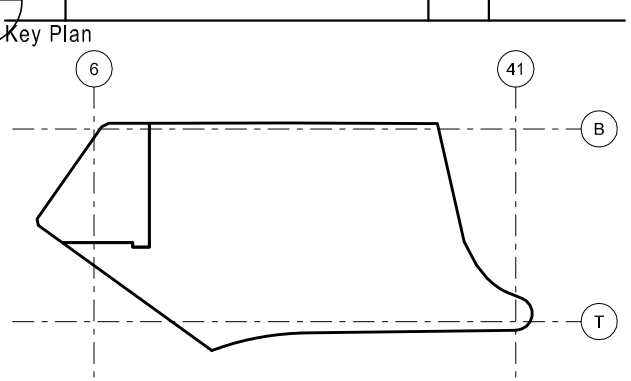
Prefix	Consultant	Discipline
AC	The Buchan Group	Architect (Casino)
AH	The Cox Group	Architect (Hotel)
A	Arup	Acoustic Consult.
BS	Philip Chun & Associates	Building Surveyor
C	Hard & Forrester	Land Surveyor
CL	Tabcorp Holdings Limited	Client (Star City & Tabcorp)
D		Civil - Drainage
DD		Disability Consultant
E	Bassett	Electrical Services
F	Arup	Fire Services
FS	Steve Paul & Partners	Fire - Sprinkler
G		Security & Surveillance
H	Steve Paul & Partners	Hydraulic Services
ID		Interior Design
J		Telephone & Data Ser.
K	Norman Disney Young	Lifts & Escalators
L	Tract Consultants	Landscape Consult.
M	Bassett	Mechanical Services
N	Cundall (St Leonards)	ESD Consultant
PL	Urbis	Planning Consultant
PM	APP Corporation	Project Management
QS	WT Partnership	Casino - QS Reports
R	Davis Langdon	Hotel - QS Reports
R	CB Richard Ellis	Retail Consultant
ST	Taylor Thomson Whitting Pty Ltd	Structural Consultant
T	Arup	Traffic Consultant
U	Hyder Consulting (Aust) Pty Ltd	Facade Consultant

**Legend**

	No work to this area		Vertical access
	New parking		Retail
	Pedestrian circulation		Food & beverage
	Retail		Casino
	Food & beverage		Outdoor casino area
	Casino		Conference
	Outdoor casino area		Landscaped deck
	Conference		New roof terrace
	Landscaped deck		Residential Hotel
	New roof terrace		Gold suite
	Residential Hotel		New Plant / Store
	Gold suite		Vehicular circulation
	New Plant / Store		
	Vehicular circulation		

**Revisions - ISSUES**

No.	Description - Issued for	By	Date
00	DA SUBMISSION	MK	01/07/08
01	DA RE-SUBMISSION	SM	09/09/08
02	PPR ISSUE	MK	02/12/08



Consultant

**THE BUCHAN GROUP**

**Buchan Laird & Bowden (Vic) Pty Ltd**  
 A.C.N. 937 272 926  
 Architects Planners & Interior Designers  
 133 Roslyn Street West Melbourne  
 Victoria 3002 AUSTRALIA  
 Tel: +613 9329 1077 Fax: +613 9329 0481  
 Email: tbg@melbourne.buchan.com.au  
 © THE BUCHAN GROUP 2008

Project

**PROJECT STAR**  
 PYRMONT, SYDNEY

Drawing Title

**LEVEL 05**  
**ROOF LEVEL PLAN**

Scale 1:500 @ A1  
 Date SEPTEMBER 2008  
 Status PPR ISSUE

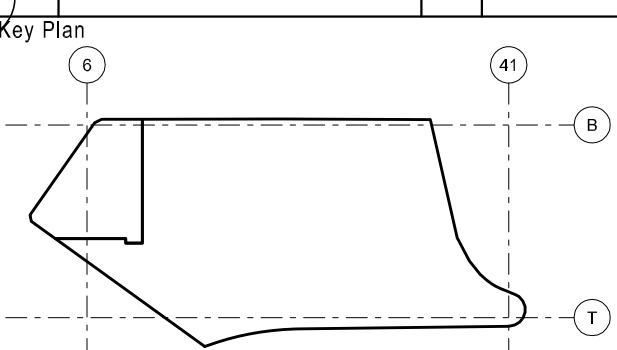
Project Number	Drawing Number	Revision
308024	DA-AC.210	02
Checked By	Approved By	Drawn



Project Consultant Team		
Prefix	Consultant	Discipline
AC	The Buchan Group	Architect (Casino)
AH	The Cox Group	Architect (Hotel)
A	Arup	Acoustic Consult.
BS	Philip Chun & Associates	Building Surveyor
C	Hard & Forrester	Land Surveyor
CL	Tabcorp Holdings Limited	Client (Star City & Tabcorp)
D		Civil - Drainage
DD		Disability Consultant
E	Bassett	Electrical Services
F	Arup	Fire Services
FS	Steve Paul & Partners	Fire - Sprinkler
G		Security & Surveillance
H	Steve Paul & Partners	Hydraulic Services
ID		Interior Design
J		Telephone & Data Ser.
K	Norman Disney Young	Lifts & Escalators
L	Tract Consultants	Landscape Consult.
M	Bassett	Mechanical Services
N	Cundall (St Leonards)	ESD Consultant
PL	Urbis	Planning Consultant
PM	APP Corporation	Project Management
QS	WT Partnership	Casino - QS Reports
R	Davis Langdon	Hotel - QS Reports
R	CB Richard Ellis	Retail Consultant
ST	Taylor Thomson Whitting Pty Ltd	Structural Consultant
T	Arup	Traffic Consultant
U	Hyder Consulting (Aust) Pty Ltd	Facade Consultant

	No work to this area		Vertical access
	New parking		Gold suite
	Pedestrian circulation		New Plant / Store
	Retail		Vehicular circulation
	Food & beverage		
	Casino		
	Outdoor casino area		
	Conference		
	Landscaped deck		
	New roof terrace		
	Residential Hotel		

Revisions - ISSUES			
No.	Description - Issued for	By	Date
00	DA SUBMISSION	MK	01/07/08
01	DA RE-SUBMISSION	SM	09/09/08
02	PPR ISSUE	MK	02/12/08



Consultant

**THE BUCHAN GROUP**

**Buchan Laird & Bowden (Vic) Pty Ltd**  
 A.C.N. 937 272 926  
 Architects Planners & Interior Designers  
 133 Roslyn Street West Melbourne  
 Victoria 3002 AUSTRALIA  
 Tel: +613 9329 1077 Fax: +613 9329 0481  
 Email: tbg@melbourne.buchan.com.au  
 © THE BUCHAN GROUP 2008

Project

**PROJECT STAR**  
 PYRMONT, SYDNEY

Drawing Title

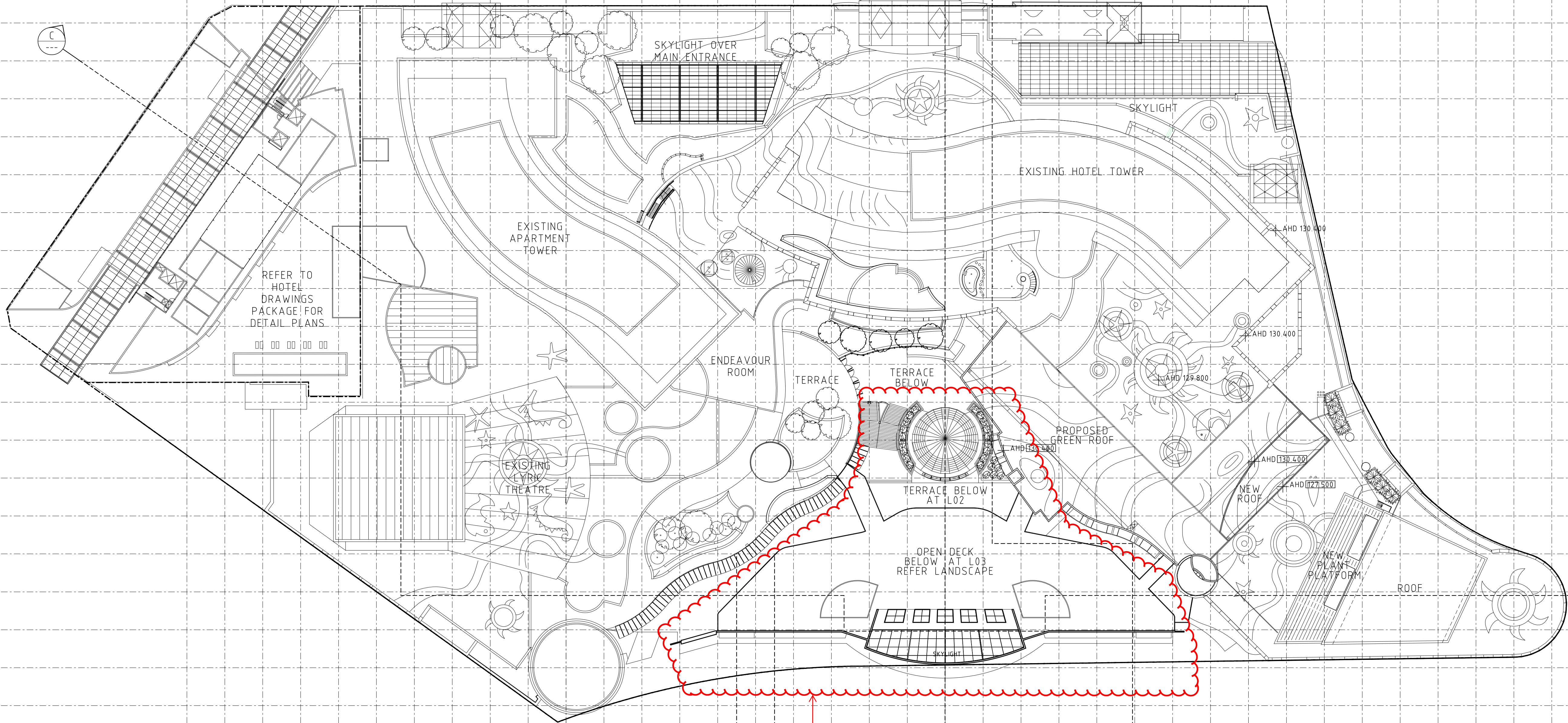
**LEVEL ROOF PLAN**

Scale	1:500 @ A1
Date	SEPTEMBER 2008
Status	PPR ISSUE

Project Number	Drawing Number	Revision
308024	DA-AC.211	02

Checked By Approved By Drawn

6 7 8 9 10 11 12 13 14 15 16 17 18 19 20 21 22 23 24 25 26 27 28 29 30 31 32 33 34 35 36 37 38 39 40 41 42



SUPERCEDED- REFER TO DRAWING NUMBER DA-011

