

Event spaces

A central flexible area is proposed, much like the existing level 3, to accommodate a range of different events. Moveable furniture and planter arrangements articulate this space when not in event mode, for use by the F&B tenancies which surround it.

A second function space is located under the ribbon elements fronting Pirrama road, and wedged between the two eastern F&B tenancies. This space provides a covered, well-connected and well-serviced event space for more intimate occasions by the wonderful city views.

- 1 outdoor event zone
- 2 covered function zone
- indicative stage zone
- F&B servicing
- Line of event security

Food and Beverage

3 tenancies have been proposed;

A central bistro (1) frames the western edge and spills into the central event space. Covered walkways provide sheltered outdoor circulation and seating arrangements. This tenancy can be serviced from a pair of goods lifts to the south and east.

A bar (2) under the southern end of the ribbon invites guests to enjoy a drink admiring the water and city views of darling harbour. In event mode, this tenancy is well-placed to service the event crowds. A restaurant (3) sits under the northern end of the ribbon in what is considered the quieter end of the terrace, for guests to enjoy a meal perched above Pirrama, again enjoying the wonderful city views. All three tenancies can be convenient accessed through all three level 5 access points and DDA lifts.

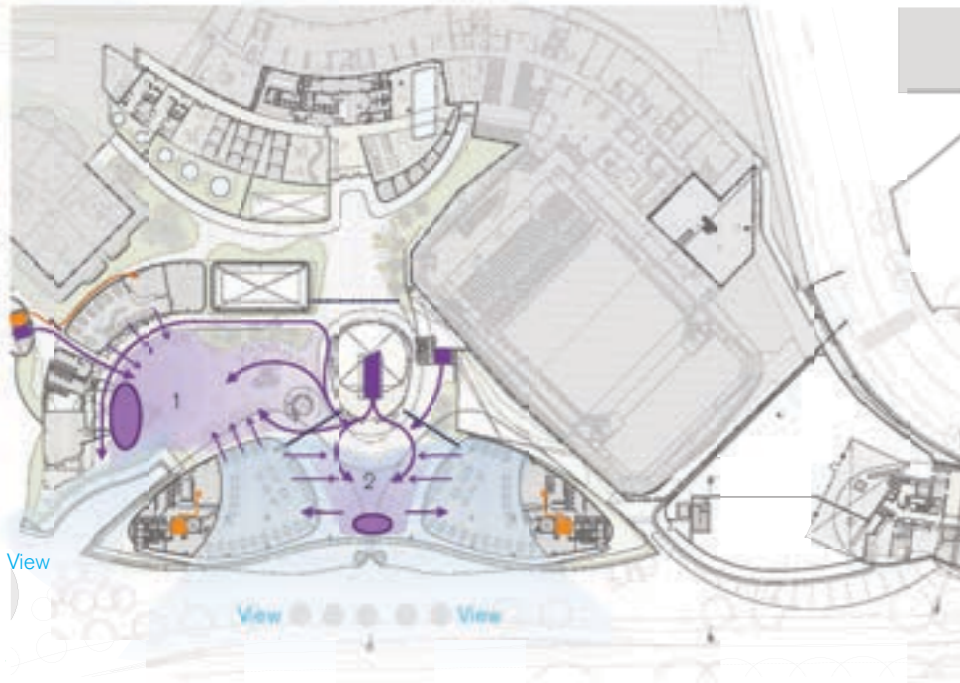
- 1 Bistro/ Cafe
- 2 Bar
- 3 Restaurant
- 4 BOH/Kitchen
- BOH lifts
- FOH access

Spa, Pool and Gym

The spa and gym facilities is a renovation of the existing Turbines pool and gym facility on level 5 of the existing Astral hotel. The entry will be from the sky terrace for equitable access from Astral hotel guests and residents alike. The facilities will be separated and sheltered from the sky terrace by a lush vegetated belt, providing a secluded and calm experience for its guests.

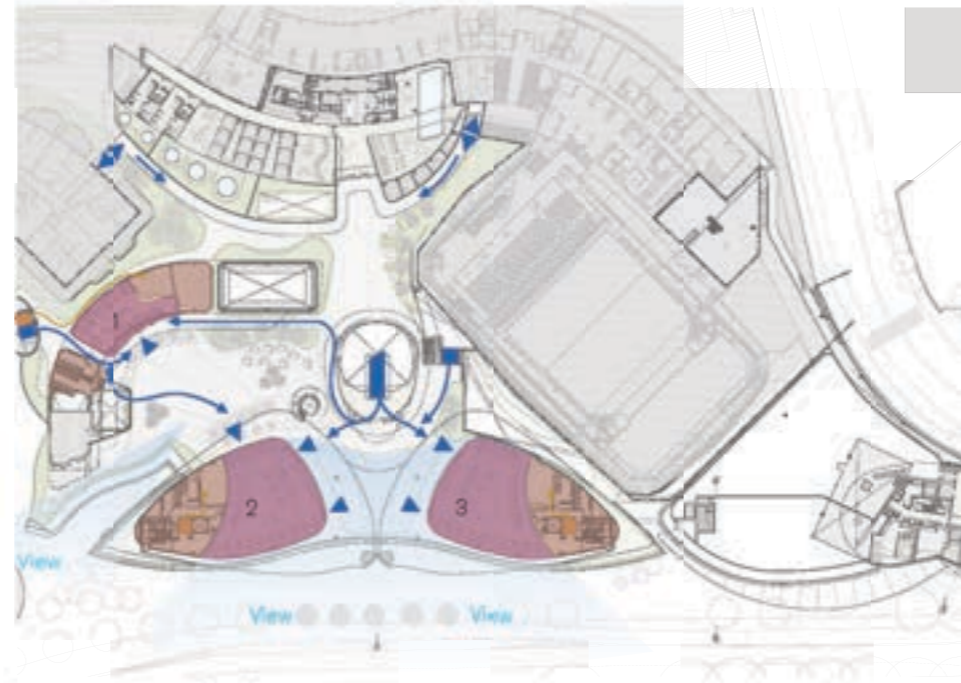
The spa will be equipped with sauna and steam rooms as well as several spa pools. Additionally, guest can benefit from a massage in one of several treatment rooms. The gym and pool area will be family-oriented and similarly surrounded by vegetation to promote wellness and calm.

- 1 Reception
- 2 BOH facilities
- 3 Gym and pool
- 4 Day Spa
- Entry



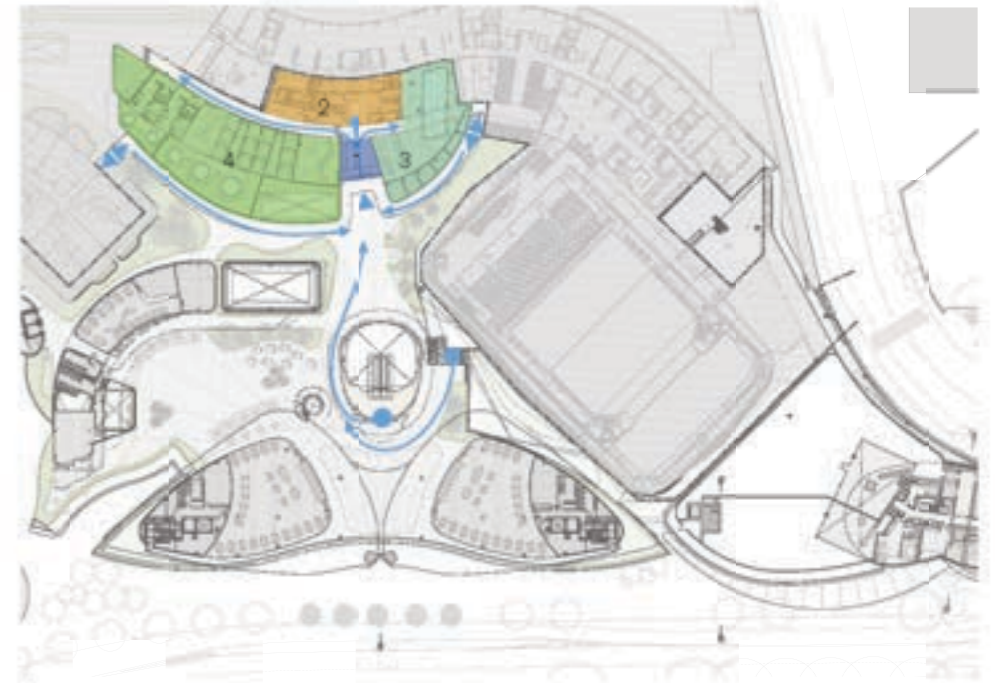
View

Event zones



View

Food and beverage tenancies



View

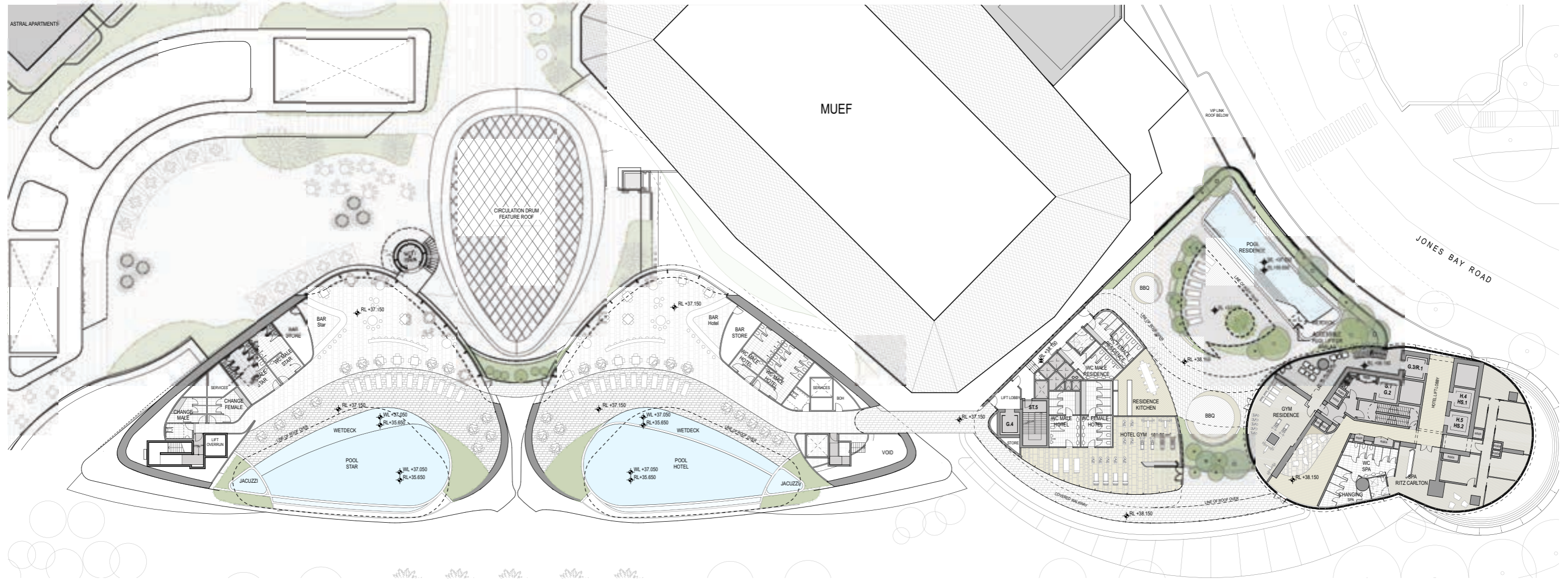
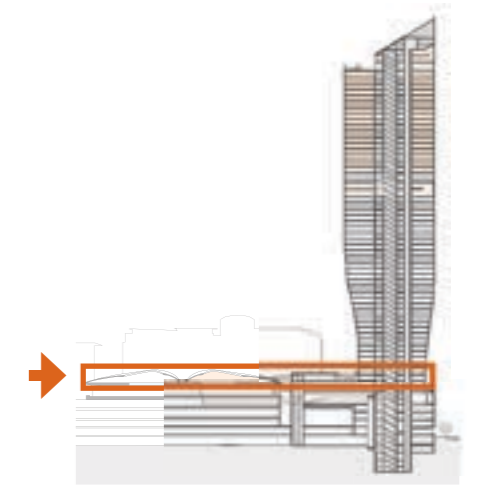
Spa, pool and gym



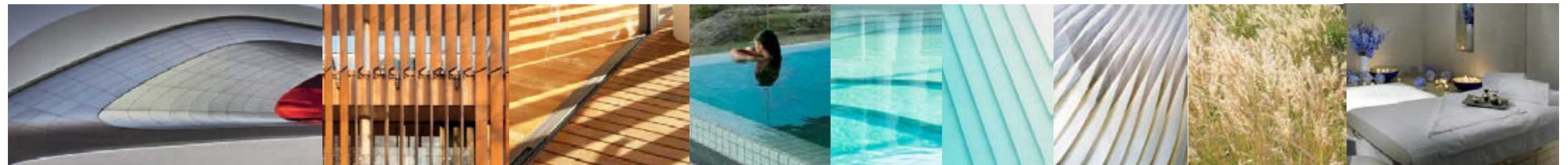
10.7 Level 7 Ribbon

Top of 'ribbon'

A sinuous extension of the Ritz Carlton Tower the Hotel Spa and Pool is located within a biomorphic ribbon that gently hovers above the existing podium. Contained within a single floor guests can enjoy expansive city views from the hotel pool or exercise in the lap pool after a workout in the hotel gym to complete the experience guest can relax with a spa session.



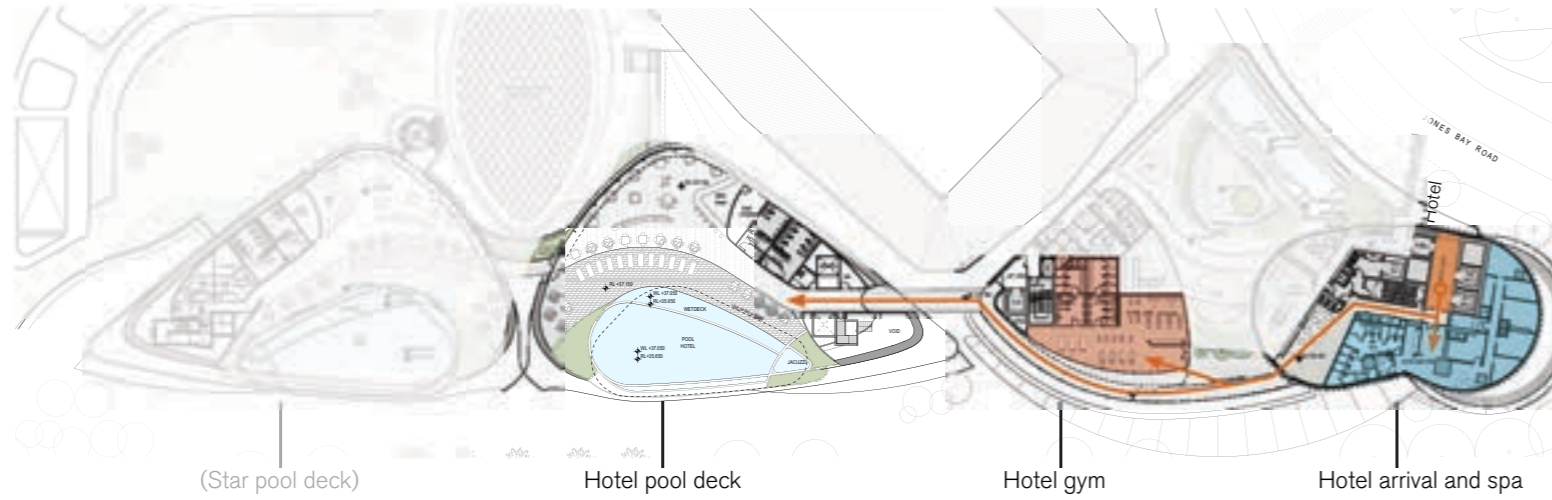
The Ribbon, Level 7



The Ribbon, eastern aerial perspective



The Ribbon from Pymont Bay park



The Ribbon pool deck view to the CBD

