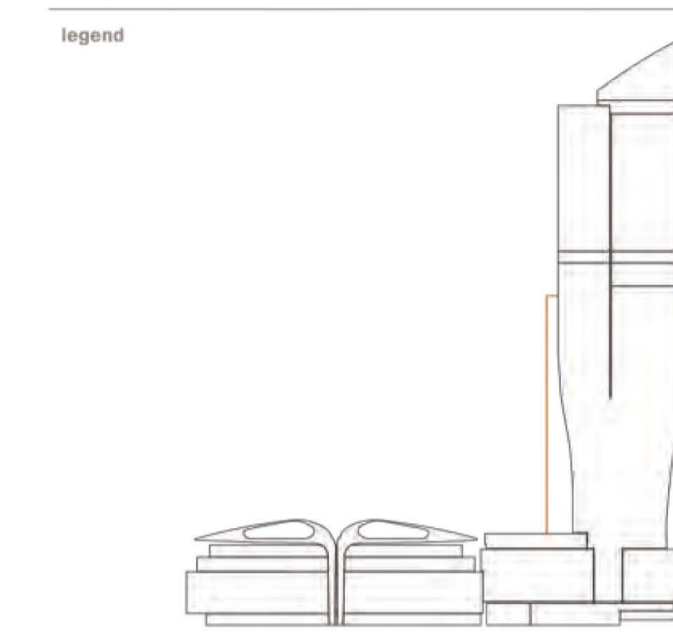
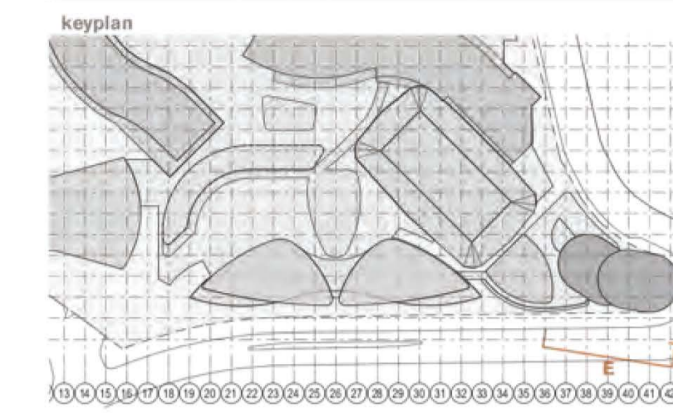


GENERAL NOTES
 ALL DIMENSIONS AND EXISTING CONDITIONS SHALL BE CHECKED AND VERIFIED BY THE CONTRACTOR BEFORE PROCEEDING WITH THE WORK.
 ALL LEVELS RELATIVE TO 'AUSTRALIAN HEIGHT DATUM'
 DO NOT SCALE DRAWINGS.
 USE FIGURED DIMENSIONS ONLY



Operable Facade Legend

SITE BOUNDARY

NON-RESIDENTIAL

- High Performance Glazing
Aluminum framed
- Aluminium Spandrel
Sandstone coloured, insulation backed
- Wintergarden Operable Facade
2x 1400x1000mm openings
- Shading Louvre
300mm deep @ 2200mm AFFL
- Awning Window
- 1 module = 1400x400mm opening
- 1.5 modules = 1400x400mm + 700x400mm opening
- 2 modules = 1400x400mm + 1400x400mm opening

FACADE TYPES

FT02 RESIDENTIAL FACADE
 Aluminum framed high performance glazing with operable interspersed light sheer curtain and medium tinted sandstone coloured spandrel, in 500x750mm randomised modules. Slot grille in spandrel for apartment horizontal ventilation.
 For location of fixed medium tinted horizontal shading louvre with building integrated PV panels refer to detail elevations AF4103, AF4104 and AF2000 series plans.

FT05 VERTICAL SLOT - EASTERN
 Dark coloured utilised cladding material

FT06 CORE CLADDING
 Utilised medium tinted cladding with planters and grow wires located on specified levels to create a 'green seam'. See AF2000 plans and AF4003 for planter details.



DA01	1/9/17	DEVELOPMENT APPLICATION	NY	SMP
rev	date	name	by	chk

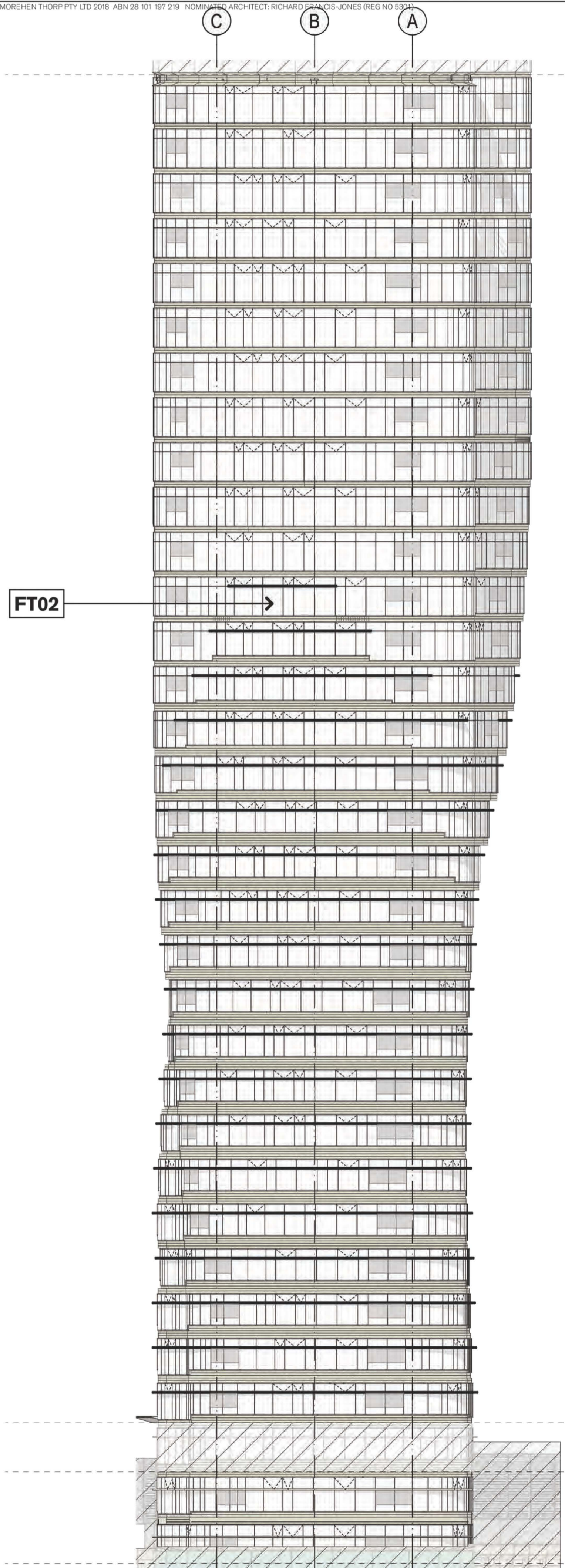
fjmt studio architecture interiors landscape urban community
 Level 5, 10 King Street | +61 2 9251 7077 | fjmtstudio.com

project
Modification 13
 80 PYRMONT STREET
 PYRMONT NSW 2009

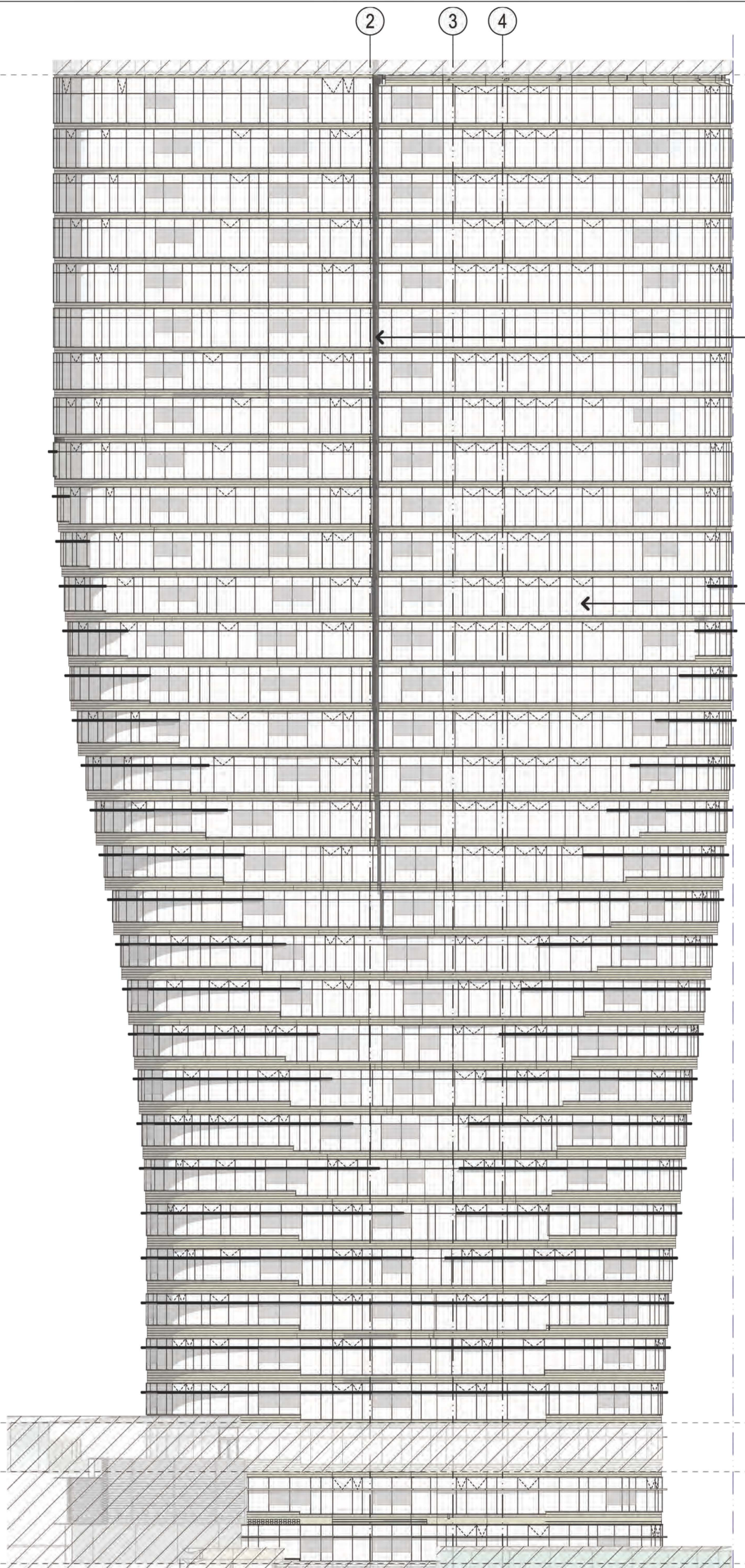
title
Detail Elevations
North & East Residential Elevations

scale **1:200 @ A1** first issued **1/9/17**

project code **SM13** sheet no. **AF4103** revision **DA01**



North Residential Elevation
1:200



East Residential Elevation
1:200



RESI