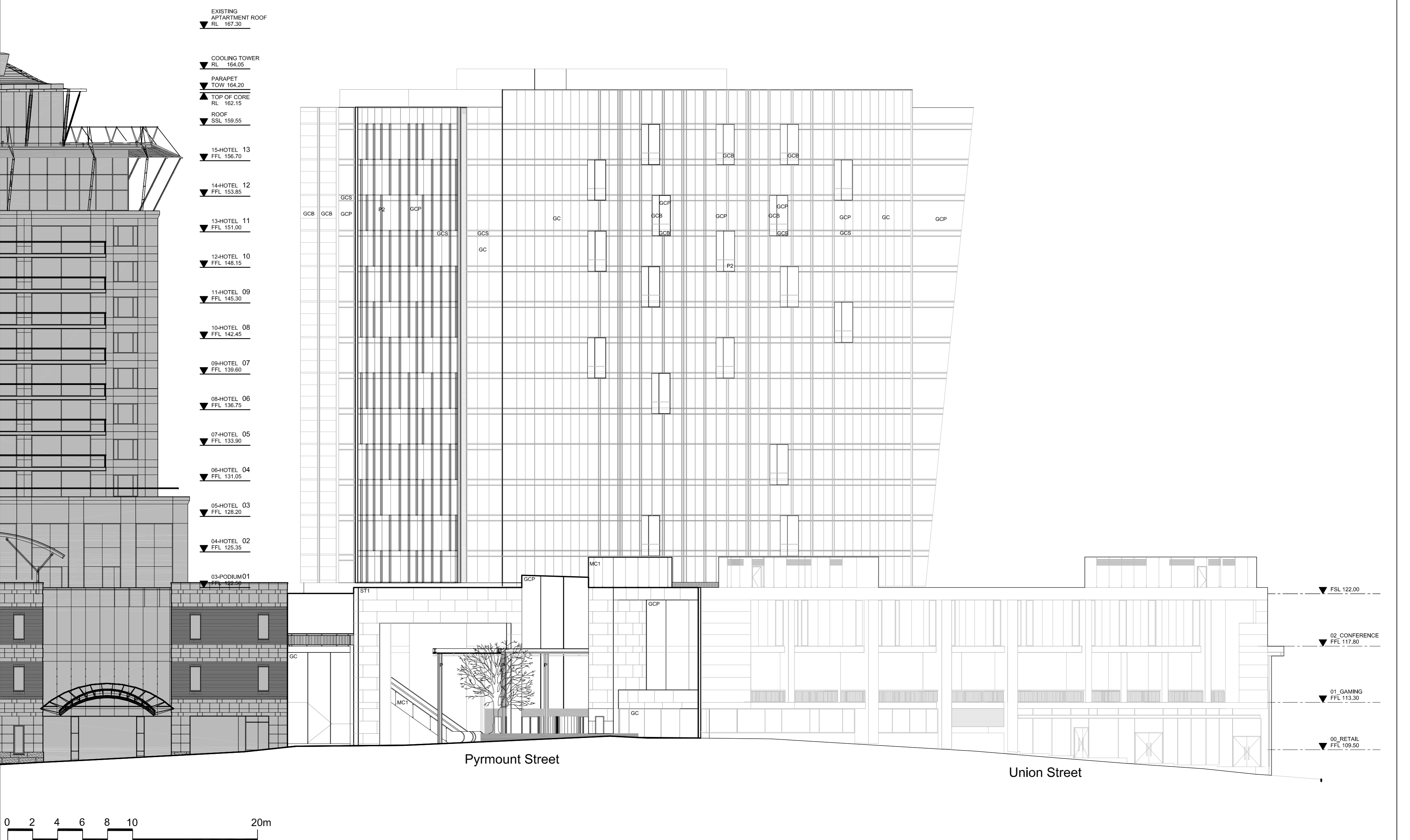
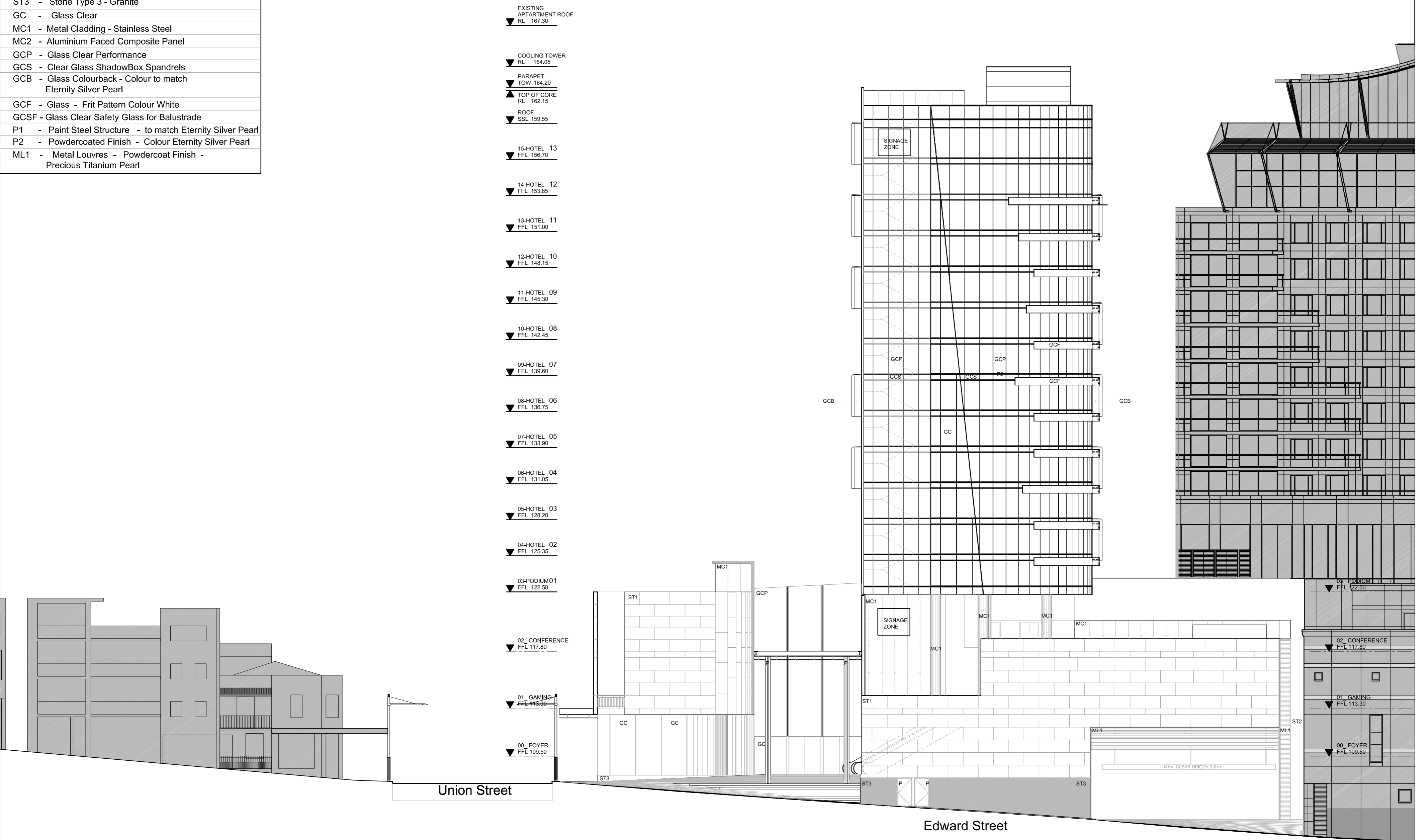


FINISHES LEGEND	
ST1	- Stone Type1
ST2	- Stone Type 2
ST3	- Stone Type 3 - Granite
GC	- Glass Clear
MC1	- Metal Cladding - Stainless Steel
MC2	- Aluminium Faced Composite Panel
GCP	- Glass Clear Performance
GCS	- Clear Glass ShadowBox Spandrels
GCB	- Glass Colourback - Colour to match Eternity Silver Pearl
GCF	- Glass - Frit Pattern Colour White
GCSF	- Glass Clear Safety Glass for Balustrade
P1	- Paint Steel Structure - to match Eternity Silver Pearl
P2	- Powdercoated Finish - Colour Eternity Silver Pearl
ML1	- Metal Louvres - Powdercoat Finish - Precious Titanium Pearl



Rev	Description	By	Date
00	ISSUED FOR PROJECT APPLICATION	AS	27.06.2008
01	ISSUED FOR PROJECT APPLICATION	AS	02.07.2008

Consultants	
Architect	Casino Buchanan Group
Acoustic Consult.	Arup
BCA Consultant	Philip Chun & Associates
Land Surveyor	Hard & Forrester
Client (Star City & Tabcorp)	Tabcorp Holdings Limited
Electrical Services	Bassett
Traffic Consultant	Arup
Mechanical Services	Bassett
Fire Services	Arup
Planning Consultant	Urbis
Cost Planers	Davis Langdon
Hydraulic Services	Steve Paul & Partners
Structural Consultant	Taylor Thomson Whiting Pty Ltd
ESD Consultant	Cundall (St Leonards)
Lifts & Escalators	Norman Disney Young
Landscaping Consult.	Tract Consultants
Facade Consultant	Hyder Consulting (Aust) Pty Ltd

**COX**  
Cox Richardson  
Level 2, 204 Clarence Street Sydney 2000 Australia  
Telephone: 612 9267 9599  
Facsimile: 612 9264 5844

**Tabcorp**  
PROJECT STAR - HOTEL

**StarCity**  
SYDNEY  
HOTEL & CASINO

Drawing Title			
EDWARD/ PYRMONT STREET ELEVATIONS			
CAD File	K:\2007\207061\Drawings\Plot	Drawn	CA/MD
Coordinator	AS	Scale	1:200@A1
Project Architect	AS	Date	27.6.2008
Project Director	JA	Rev	01
Cox Project No.	207061	Drawing Number	DA-3001
		North	