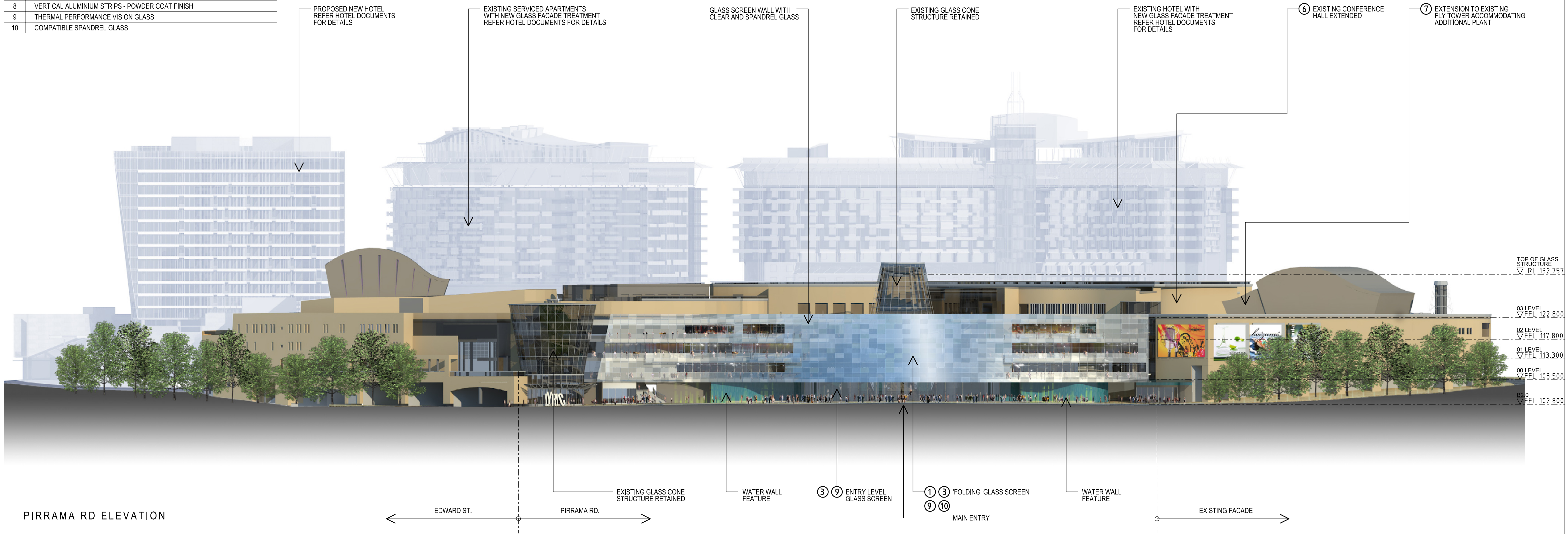
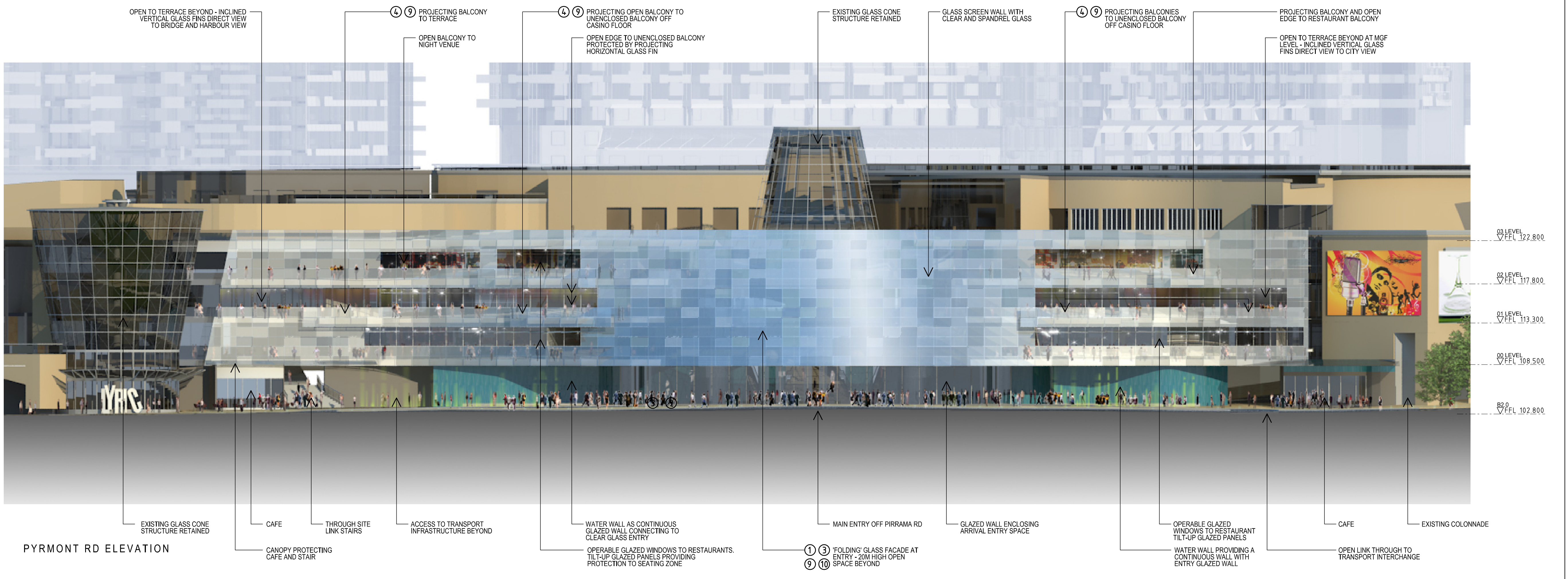


| EXTERNAL FINISHES SCHEDULE |  |
|----------------------------|--|
| 1                          | STEEL FRAME MEMBERS - POWDER COAT FINISH (MAIN GLASS SCREEN) |
| 2                          | ALUMINIUM CURTAIN WALL MULLIONS - POWDER COAT FINISH         |
| 3                          | GLASS SCREEN MULLIONS - NATURAL ANODIZED ALUMINIUM FINISH    |
| 4                          | BALUSTRADE SUPPORTS - NATURAL ANODIZED ALUMINIUM FINISH      |
| 5                          | SANDSTONE WALL PANELS  |
| 6                          | RENDERED MASONRY / CONCRETE WALL - COLOUR TO MATCH EXISTING  |
| 7                          | COMPOSITE ALUMINIUM PANELS TO MATCH EXISTING                 |
| 8                          | VERTICAL ALUMINIUM STRIPS - POWDER COAT FINISH               |
| 9                          | THERMAL PERFORMANCE VISION GLASS                             |
| 10                         | COMPATIBLE SPANDREL GLASS                                    |



PIRRAMA RD ELEVATION

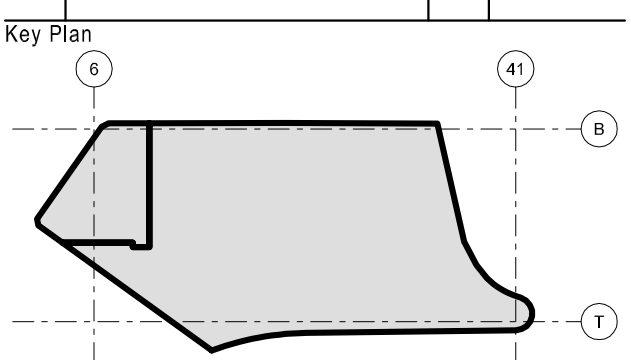


PYRMONT RD ELEVATION

| Project Consultant Team |                                 |                              |
|-------------------------|---------------------------------|------------------------------|
| Prelix Consultant       | Discipline                      |                              |
| AC                      | The Buchan Group                | Architect (Casino)           |
| AH                      | The Cox Group                   | Architect (Hotel)            |
| A                       | Arup                            | Acoustic Consult.            |
| BS                      | Philip Chun & Associates        | Building Surveyor            |
| C                       | Hard & Forrester                | Land Surveyor                |
| CL                      | Tabcorp Holdings Limited        | Client (Star City & Tabcorp) |
| D                       |                                 | Civil - Drainage             |
| DD                      |                                 | Disability Consultant        |
| E                       | Bassett                         | Electrical Services          |
| F                       | Arup                            | Fire Services                |
| FS                      |                                 | Fire - Sprinkler             |
| G                       |                                 | Security & Surveillance      |
| H                       | Steve Paul & Partners           | Hydraulic Services           |
| ID                      |                                 | Interior Design              |
| J                       |                                 | Telephone & Data Ser.        |
| K                       | Norman Disney Young             | Lifts & Escalators           |
| L                       | Tract Consultants               | Landscaping Consult.         |
| M                       | Bassett                         | Mechanical Services          |
| N                       | Cundall (St Leonards)           | ESD Consultant               |
| PL                      | Urbs                            | Planning Consultant          |
| PM                      | APP Corporation                 | Project Management           |
| QS                      | WT Partnership                  | Casino - QS Reports          |
| R                       | Davis Langdon                   | Hotel - QS Reports           |
| R                       | CB Richard Ellis                | Retail Consultant            |
| ST                      | Taylor Thomson Whitting Pty Ltd | Structural Consultant        |
| T                       | Arup                            | Traffic Consultant           |
| U                       | Hyder Consulting (Aust) Pty Ltd | Facade Consultant            |

Revisions - ISSUES

| No. | Description - Issued for | By | Date     |
|-----|--------------------------|----|----------|
| 00  | DA SUBMISSION            | MK | 01/07/08 |
| 01  | DA RE-SUBMISSION         | SM | 09/09/08 |



Consultant

**THE BUCHAN GROUP**

Buchan Laird & Bowden (Vic) Pty Ltd  
 A.C.N. 007 272 526  
 Architects, Planners & Interior Designers  
 133 Rosslyn Street West Melbourne  
 Victoria 3003 AUSTRALIA  
 Tel: +6139329 1077 Fax: +613 9329 0481  
 Email: tbg@melbourne.buchan.com.au  
 © THE BUCHAN GROUP 2008

PROJECT STAR  
PYRMONT, SYDNEY

|                              |                    |          |
|------------------------------|--------------------|----------|
| Drawing Title                |                    |          |
| PIRRAMA RD STREET ELEVATIONS |                    |          |
| Scale                        | 1:500 / 1:250 @ A1 |          |
| Date                         | SEPTEMBER 2008     |          |
| Status                       |                    |          |
| Project Number               | Drawing Number     | Revision |
| 308024                       | DA-AC.401          | 01       |
| Checked By                   | Approved By        |          |