

Project Consultant Team

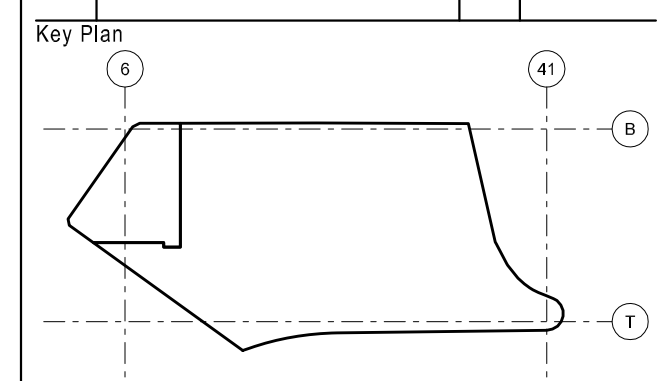
Prefix	Consultant	Discipline
AC	The Buchan Group	Architect (Casino)
AH	The Cox Group	Architect (Hotel)
A	Arup	Acoustic Consult.
BS	Philip Chun & Associates	Building Surveyor
C	Hard & Forrester	Land Surveyor
CL	Tabcorp Holdings Limited	Client (Star City & Tabcorp)
D		Civil - Drainage
DD		Disability Consultant
E	Bassett	Electrical Services
F	Arup	Fire Services
FS	Steve Paul & Partners	Fire - Sprinkler
G		Security & Surveillance
H	Steve Paul & Partners	Hydraulic Services
ID		Interior Design
J		Telephone & Data Ser.
K	Norman Disney Young	Lifts & Escalators
L	Tract Consultants	Landscaping Consult.
M	Bassett	Mechanical Services
N	Cundall (St Leonards)	ESD Consultant
PL	Urbis	Planning Consultant
PM	APP Corporation	Project Management
QS	WT Partnership	Casino - QS Reports
RS	Davis Langdon	Hotel - QS Reports
R	CB Richard Ellis	Retail Consultant
ST	Taylor Thomson Whitting Pty Ltd	Structural Consultant
T	Arup	Traffic Consultant
U	Hyder Consulting (Aust) Pty Ltd	Facade Consultant

LEGEND

	EXPANDED CONFERENCE
	NO WORK TO THIS AREA

Revisions - ISSUES

No.	Description - Issued for	By	Date
00	DA SUBMISSION	MK	01/07/08
01	DA RE-SUBMISSION	SM	09/09/08
02	PPR ISSUE	MK	02/12/08



Consultant

THE BUCHAN GROUP

Buchan Laird & Bowden (Vic) Pty Ltd
 A.C.N. 007 272 826
 Architects Planners & Interior Designers
 133 Rosslyn Street West Melbourne
 Victoria 3003 AUSTRALIA
 Tel: +61 3 9329 1077 Fax: +61 3 9329 0481
 Email: tbg@melbourne.buchan.com.au
 © THE BUCHAN GROUP 2008

PROJECT STAR
 PYRMONT, SYDNEY

Drawing Title

**LOCAL CONTEXT: LEVEL 03
 CRITICAL VIEW LINE
 ANALYSIS PLAN**

Scale	1:500 @ A1
Date	SEPTEMBER 2008
Status	PPR ISSUE

Project Number	Drawing Number	Revision
308024	DA-AC.122	02
Checked By	Approved By	Drawn

