



NSW GOVERNMENT
Planning

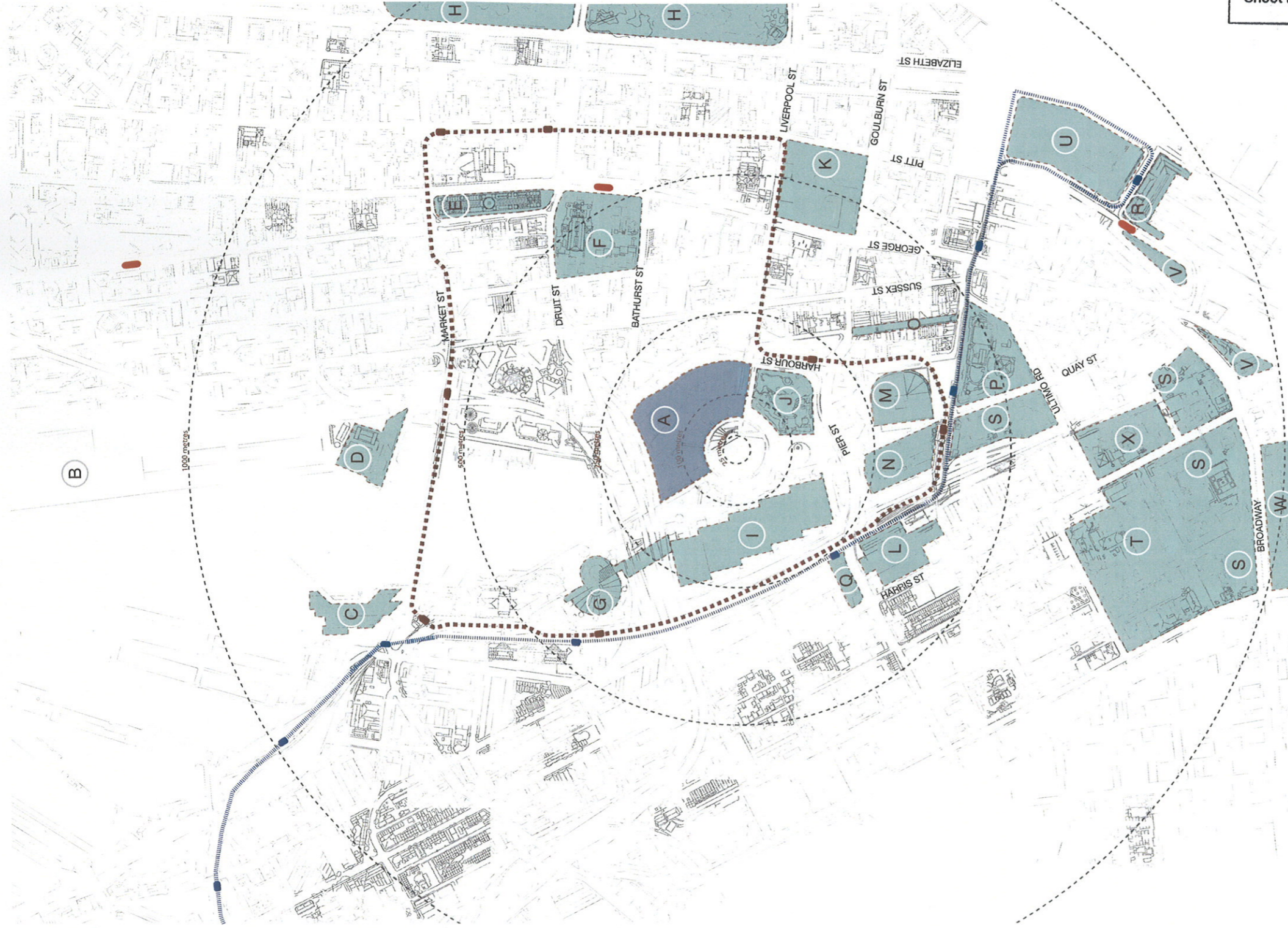
Issued under the Environmental Planning and Assessment Act 1979

Approved Application No. MP08 0093

granted on the - 8 MAR 2010

Signed E. Caldwell

Sheet No. 1 of 31



PLACES OF INTEREST

- A. Darling Walk Site
- B. East Darling Harbour development - Barangaroo
- C. Australian Maritime Museum
- D. Sydney Aquarium
- E. Queen Victoria Building
- F. Town Hall
- G. Convention Centre
- H. Hyde Park
- I. Exhibition Centre
- J. Chinese Gardens
- K. World Square
- L. Powerhouse Museum
- M. Entertainment Centre
- N. Entertainment Centre Car Park
- O. Chinatown - Dixon St and Dixon St North
- P. Paddy's Markets
- Q. Ian Thorpe Pool
- R. Central Station
- S. UTS
- T. SIT
- U. Belmore park
- V. Railway Square / Bus Terminals
- W. Former CUB Development Site
- X. ABC Ultimo Centre

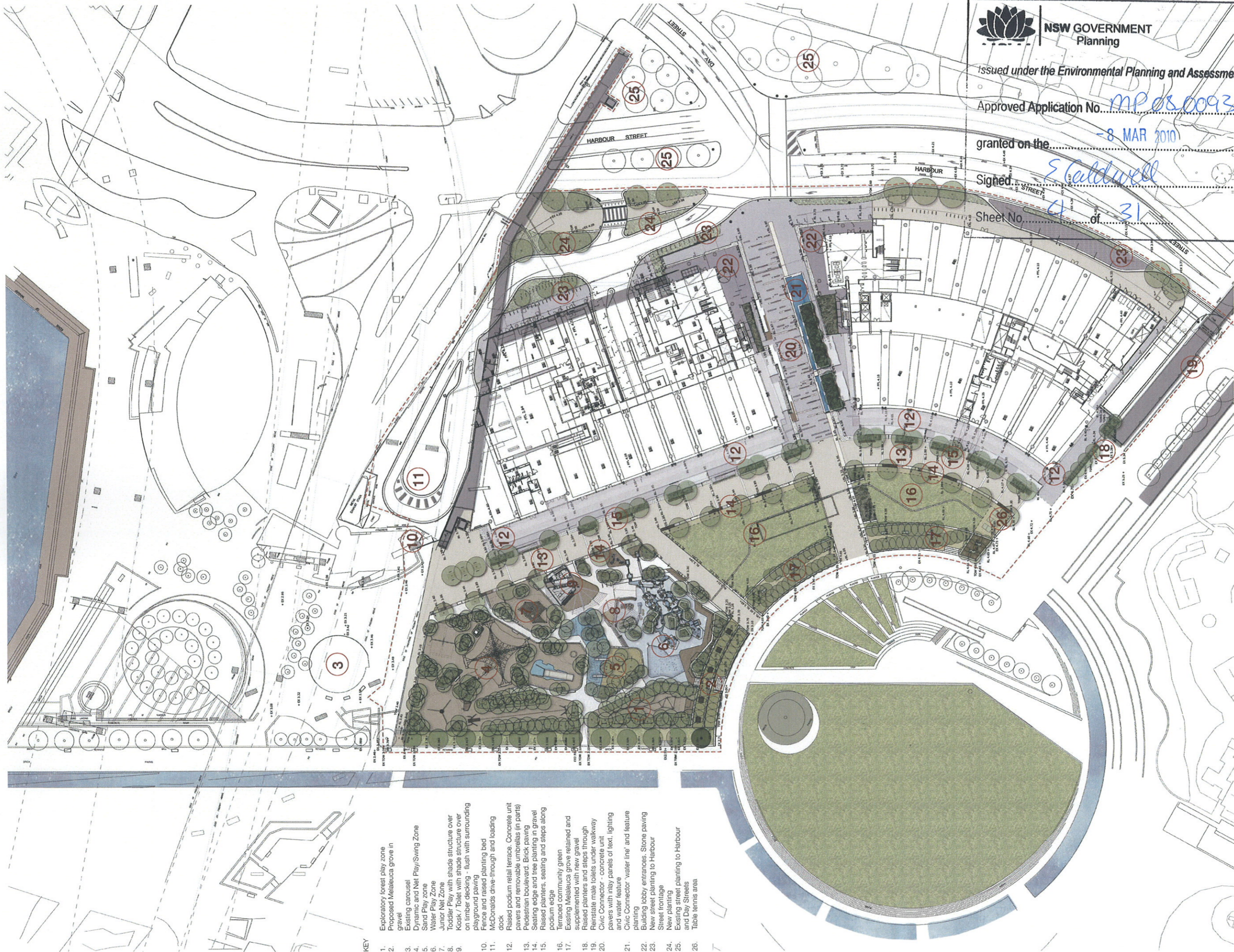
KEY

- Monorail Station
- Monorail Station
- Metro Light Rail
- Metro Light Rail Station
- Train Station
- Places of Interest
- Darling Walk Site



Source: Google maps | 20.01.2007

NSW GOVERNMENT
 Planning
 under the Environmental Planning and Assessment Act 1979
 Proposed Application No. MP08-0093
 granted on the MAR 2010
 signed by Well
 Sheet No. 2 of 31



- KEY**
1. Exploratory forest play zone
 2. Proposed Melaleuca grove in gravel
 3. Existing carousel
 4. Dynamic and Net Play/Swing Zone
 5. Sand Play zone
 6. Water Play Zone
 7. Junior Net Zone
 8. Toddler Play with shade structure over on timber decking - flush with surrounding playground paving
 9. Kiosk / Toilet with shade structure over playground paving
 10. Fence and raised planting bed
 11. McDonalds drive-through and loading dock
 12. Raised podium retail terrace. Concrete unit pavers and removable umbrellas (in parts)
 13. Pedestrian boulevard. Brick paving
 14. Seating edge and tree planting in gravel
 15. Raised planters, seating and steps along podium edge
 16. Terrace community green
 17. Existing Melaleuca grove retained and supplemented with new gravel
 18. Raised planters and steps through Reinstate male toilets under walkway
 19. Civic Connector - concrete unit pavers with inlay panels of text, lighting and water feature
 20. Civic Connector 'water line' and feature planting
 21. Building lobby entrances. Stone paving
 22. New street planting to Harbour and D'Arcy Streets
 23. Street frontage
 24. New planting
 25. Existing street planting to Harbour and D'Arcy Streets
 26. Table tennis area

NSW GOVERNMENT Planning

Issued under the Environmental Planning and Assessment Act 1979

Approved Application No. MP 08 0093

granted on the 8 MAR 2010


Signed E Caldwell

Sheet No. 4 of 31

KEY

1. Senior Dynamic Play Area (5-12 years)
2. Forest Exploration Area (2-12 years)
3. Mogul Terrain Zone (2-8 years)
4. Junior Dynamic Play Area (2-5 years)
5. Observation Zone (Kiosk and Toilets)
6. Junior Slide and Sand Play Area (2-5 years)
7. Senior Slide and Spinning Area (5-12 years)
8. Baby and Toddler Play Area (0-2 years)
9. Pumping Station (5 years-adult)
10. Water Channels Area (2-Adult)
11. Synchronised Jets (0-Adult)
12. Seating areas
13. Meleleuca grove with seating areas



 **NSW GOVERNMENT**
Planning

Issued under the Environmental Planning and Assessment Act 1979

Approved Application No. MPD8_0093

granted on the -8 MAR 2010

Signed E. Caldwell

Sheet No. 5 of 31

KEY

- 1. Senior dynamic play area (5-12 years)**
 - Large net climbing structure
 - 4 x large swings
 - 1 x rotating swing
 - Twisted rope bridge
 - *Livistona australis*
 - *Howea fosteriana*
- 2. Forest exploration area (2-12 years)**
 - Flying fox
 - Horizontal rope structure
 - Balancing beams
 - Salvaged sandstone blocks
 - Deck
 - *Corymbia maculata*
- 3. Mogul terrain zone (2-5 years)**
 - Mounded rubber 'soft fall' terrain
 - *Livistona australis*
 - *Howea fosteriana*
- 4. Junior dynamic play area (2-5 years)**
 - 2 x junior swings
 - Medium sized junior net climbing structure
 - *Livistona australis*
 - *Howea fosteriana*
- 5. Observation Zone**
 - Kiosk
 - Toilets (1 x accessible with baby change, 2 x unisex)
 - Bubblers
 - Shade structure
- 6. Junior slide and sand play area (2-5 years)**
 - 2 x slides
 - 2 x sand diggers
 - *Livistona australis*
 - *Howea fosteriana*
- 7. Senior slide and spinning area (5-12 years)**
 - 1 x wide custom slide on rubber mound
 - 1 x spinning element
 - 1 x climbing wall
 - Tunnels through mound
 - *Livistona australis*
 - *Howea fosteriana*
- 8. Baby toddler and play area (0-2 years)**
 - Sand pit
 - Carved sandstone with 'puddles'
 - Shade structure
- 9. Pumping station (5 years-adult)**
 - 7 x hand pumps
 - 1 x water wheel
 - Channels in ground surface
 - Troughs above ground
 - *Livistona australis*
 - *Howea fosteriana*
 - *Corymbia maculata*
- 10. Water channels area (2-Adult)**
 - Water channels with sluice gates and flow diverters
 - Interactive water moving elements
 - *Livistona australis*
 - *Howea fosteriana*



11. Synchronised jets area (0-Adult)

Series synchronised jets decorated with finishes to ground surface



NSW GOVERNMENT
Planning

Issued under the Environmental Planning and Assessment Act 1979

Approved Application No. MPO8_0093

Granted on the -8 MAR 2010

Signed E. Caldwell

Sheet No. 6 of 31

1. Senior dynamic play area (5-12 years)



Kompan Swing



Corocord Giant Octanet



Corocord Rope Net Bridge



Kompan Giant Swing with Birds Nest

2. Forest exploration area (2-12 years)



Kompan Cable Way flying-flox



Corocord Climbing Valley



Timber balancing beams and sandstone blocks



Corymbia musculata forest

3. Mogul terrain zone (2-5 years)



Mogul Play Terrain - ASPECT Studios

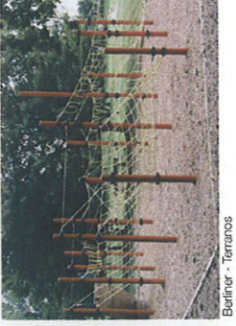


Mogul Play Terrain - Garten der Potenzen

4. Junior dynamic play area (2-5 years)



Kompan Junior Swing



Beifirer Terraces

5. Observation Zone



Kiosk Jucarandi Square - ASPECT Studios



Toilet, Nowington Armoury SOPA

6. Junior slide and sand play area (2-5 years)



Kompan Embarkment Slide



Rubber Hill



Contastic Diggar

7. Senior slide and spinning area (5-12 years)



Slide - Geotizer park



Kompan Supernova



Rubber Hill - Mabourne



Climbing wall-Buga

8. Baby toddler and play area (0-2 years)



Carved channels



Small water bubbler



Carved channels



Salvaged Sandstone

9. Pumping station (5 years-adult)



Richter - Bucket Wheel and Channel



Richter - Hand pump



Richter - Water Toys

10. Water channels area (2-Adult)



Water channels - Duisburg Nord, Germany



Richter - Scooping Wheel and Lock Gate



Richter - Water Switch



Richter - Lock Gate



Richter - Archimedes screw

11. Synchronised jets area (0-Adult)



Water jets - Spackmen, Mossep Michaels



Water jets - ASPECT Studios Image



NSW GOVERNMENT
Planning

Issued under the Environmental Planning and Assessment Act 1979

Approved Application No. MP 08-0093

- 8 MAR 2010

granted on the.....

Signed E. Caldwell

Sheet No. 7 of 31



- KEY**
- Existing tree to be retained
 - Proposed tree
 - Existing tree to be relocated
 - Relocated tree

TREE SCHEDULE

TREE SCHEDULE	Species	Common Name	Vol (litre)	Planted Height (m)	Ca (mm)	Quantity
CH	<i>Corymbia microcarpa</i>	Spotted Gum	150L-300L varies	3 - 5m varies	25-40mm varies	90
EE	<i>Eucalyptus eumundii</i>	Quandong	400L	6.5m	50mm	2
LA	<i>Livistonia australis</i>	Cabbage Tree	N/A	4 to 10m varies	150 - 250mm varies	82
LI	<i>Lagerstroemia hybrids 'Natchez'</i>	Crape Myrtle	200L	2.5m	40mm	31
LC	<i>Lophostemon confertus</i>	Brush Box	400L	6m	80mm	12
MG	<i>Melaleuca quincernaria</i>	Paperbark	400L	3.5m	80mm	14
TL	<i>Tristanopsis laurina 'Luscious'</i>	'Luscious' Water Gum	400L	3.5m	80mm	14

TREES



- 1. *Corymbia maculata* Spotted Gum
- 2. *Howea forsteriana* Kentia Palm
- 3. *Lagerstroemia hybrids 'Natchez'* Crape Myrtle
- 4. *Melaleuca quincernaria* Broad-leaved Paperbark
- 5. *Eucalyptus eumundii* Eumundi Quandong
- 6. *Tristanopsis laurina 'Luscious'* 'Luscious' Water Gum
- 7. *Lophostemon confertus* Brush Box

NSW GOVERNMENT Planning

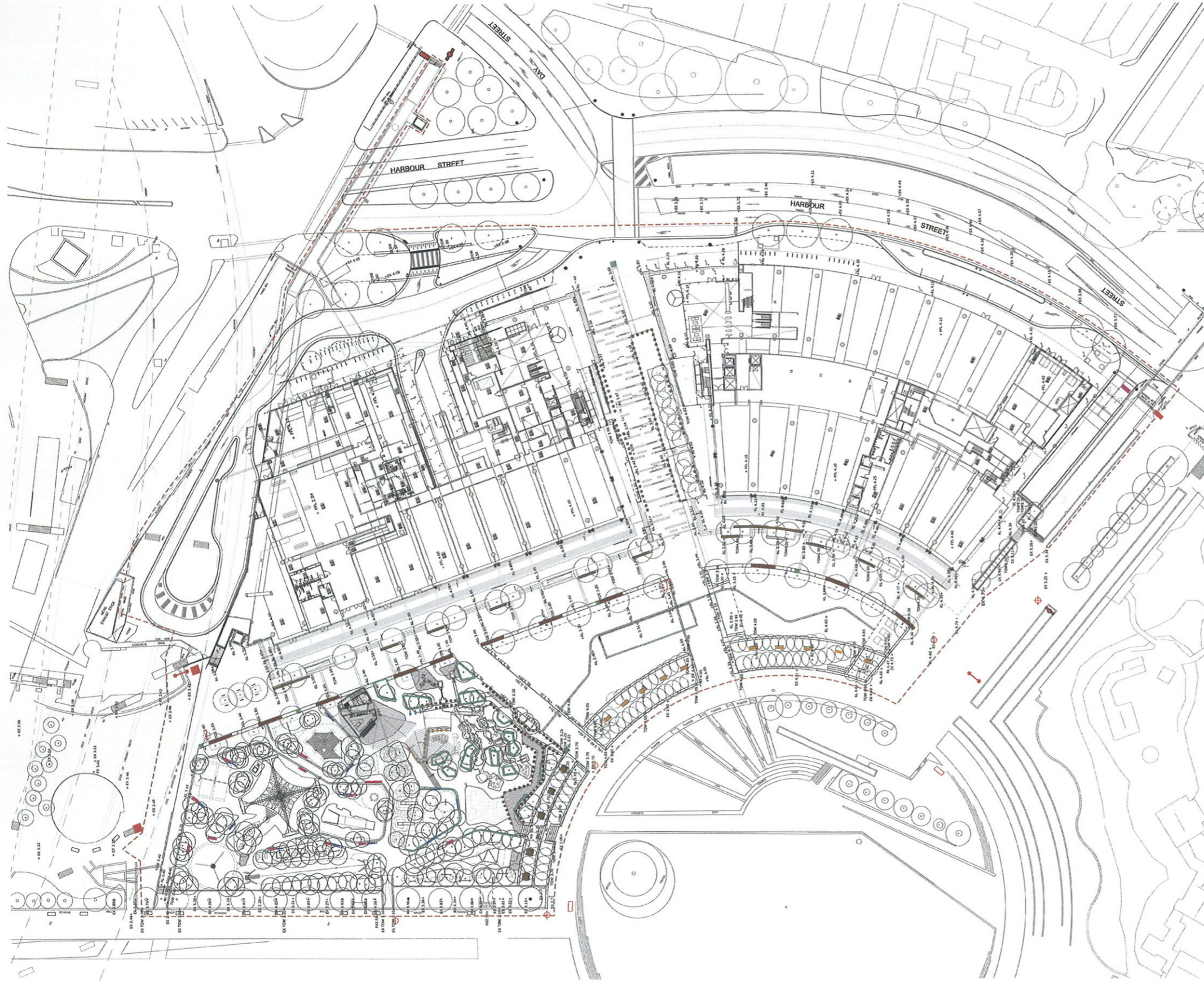
Issued under the Environmental Planning and Assessment Act 1979

Approved Application 0093

granted on the 8 MAR 2010

Signed [Signature]

Sheet No. 8 of 31



Key: Seating

- Seating bench with back (relocated existing benches) = 10 no.
- Seating bench with back (part of playground structure)
- Seating without back: Type 1 - 6000 x 800 x 450mm height precast concrete benches with recycled timber seat = 11 no.
- Seating without back: Type 2 - length varies x 500 x 450mm height timber seat = 11 no.
- Informal seating (part of Civic Connector / podium terrace structure)
- Informal seating (part of playground structure)
- Seating bench without back - perforated metal
- Seating bench with back - perforated metal
- Seating bench without back - concrete (part of playground structure)
- Timber seating bench - square 1500mm x 1500mm (playground)

Key: Signage and Furniture

- Existing Primary Directional Marker
- Existing Secondary Directional Marker
- Proposed Secondary Directional Marker with directions to Cockle Bay, Chinese Gardens, Powerhouse Museum, Maritime Museum and City
- Existing Pedestrian Amenity Marker
- Proposed Pedestrian Amenity Marker with directions to Chinese Gardens, Cockle Bay and City
- Existing Primary Map (replace map)
- Existing Entry Marker
- Proposed Entry Marker - to include directions to China Town via Bay Street
- Relocated Existing Entry marker - to include direction to China Town
- Existing Entry marker to be relocated
- Existing Place Identification Marker
- Existing JC Deceaux sign
- Relocated existing rubbish bins = 4 no.
- Water fountain = 3 no.

NSW GOVERNMENT Planning

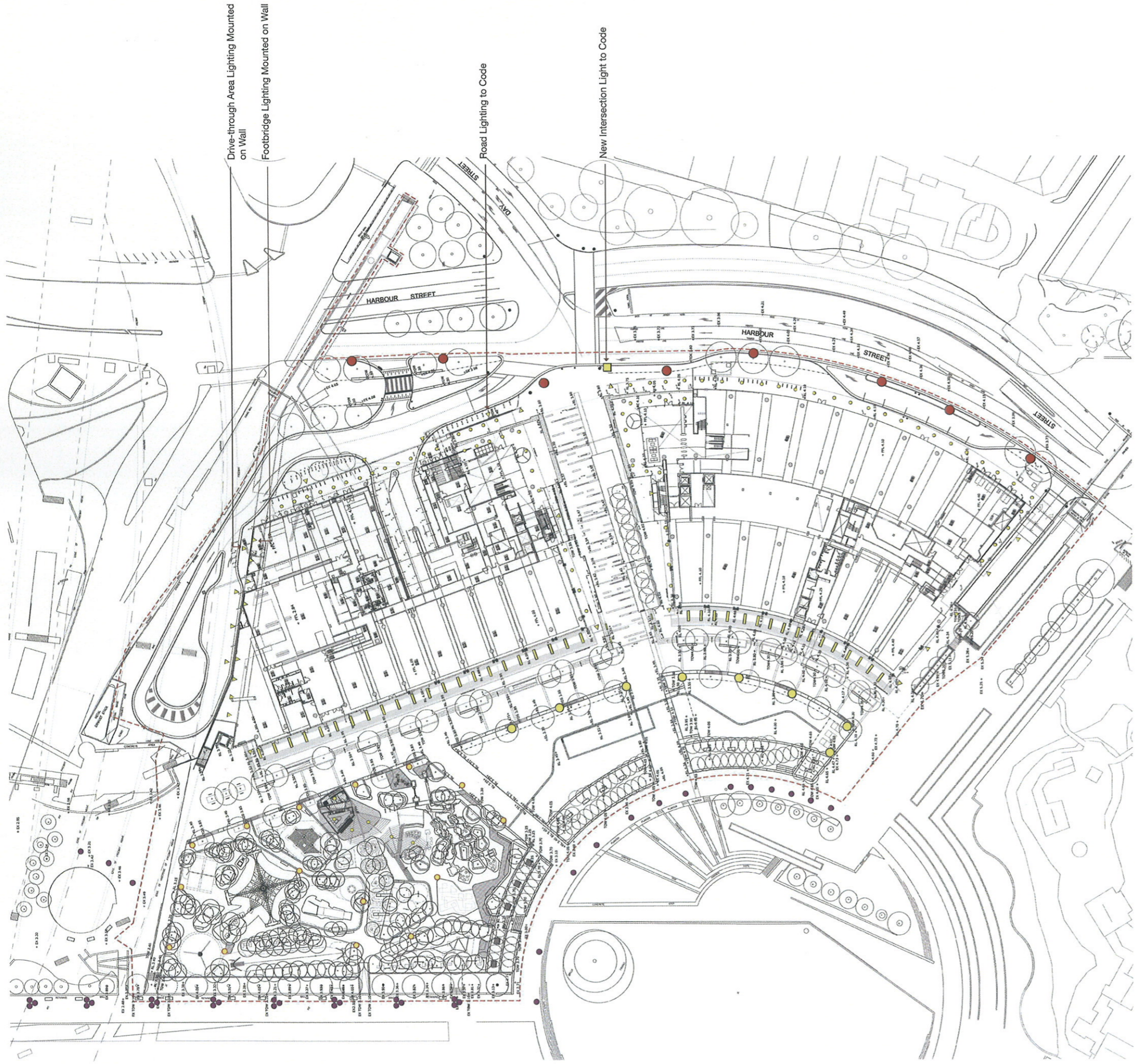
Issued under the Environmental Planning and Assessment Act 1979

Approved Application No. MP08 0093

granted on the - 8 MAR 2010

Signed E. Caldwell

Sheet No. 10 of 31



- Existing Road Lighting to be retained
- Existing Single Post Top Light
- Existing Triple Post Top Light
- Relocated Road Light
- ▬ Proposed Under Awning Recessed Linear Light
- Proposed Post Top Light (6m high pole)
- ▼ Proposed Light Fixed to Building
- Proposed Under Canopy Downlight
- Proposed Intersection Lighting
- Proposed Playground Lighting - 6m high pole

NSW GOVERNMENT
Planning

Issued under the Environmental Planning and Assessment Act 1979

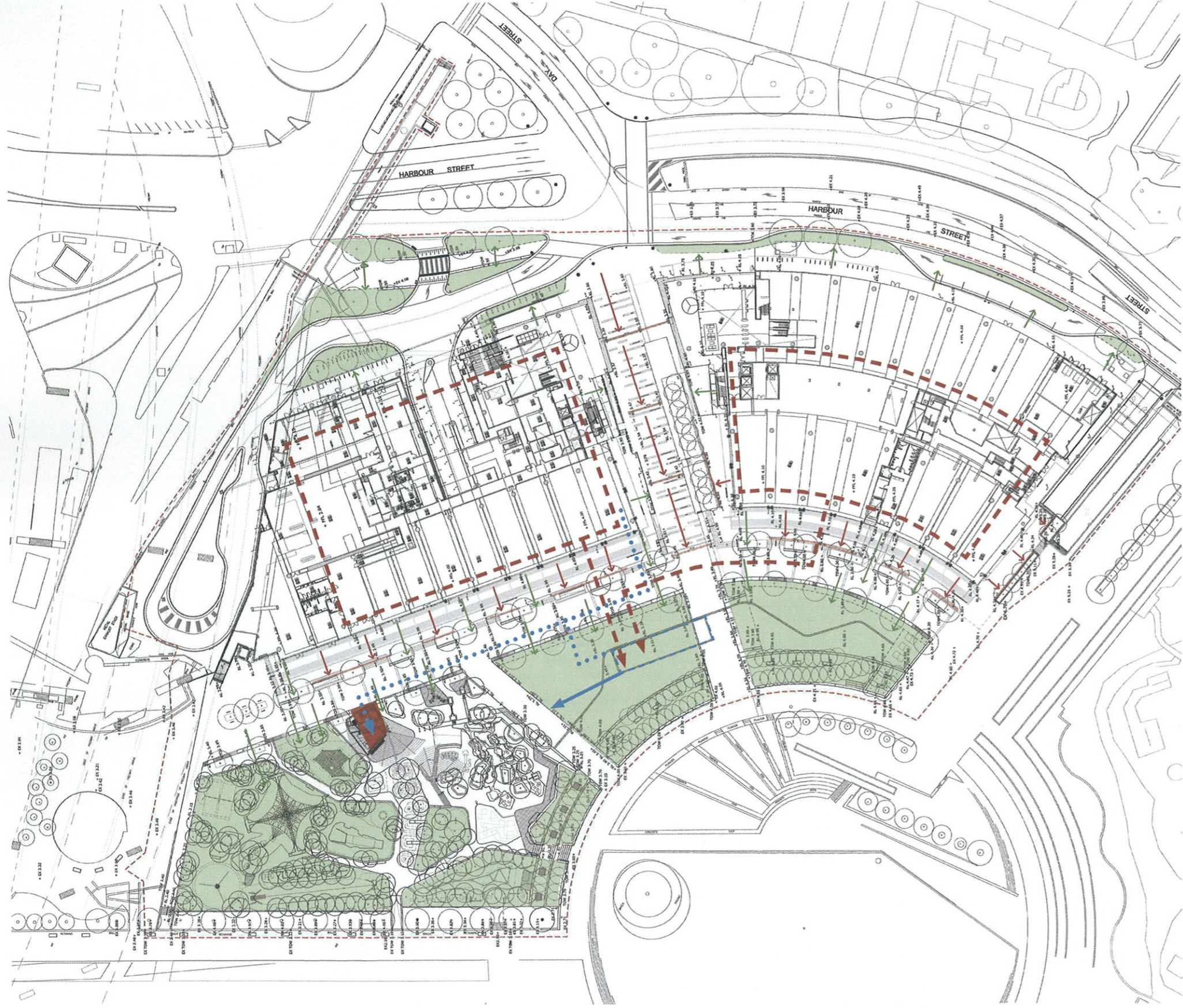
Approved Application No. MP 08-0093

granted on the - 8 MAR 2010

Signed E. Caldwell

Sheet No. 11 of 31

Public Domain Lighting Plan | LD44620
Rev: G
Scale: 1:500 @ A1
Date: Nov 23 2009
Drawn: JEM/CM
Checked: KJ/SC
Bovis
Land Lease
Chart:



Key:



Permeable landscape areas



Subsurface rainwater collection tank (from roof water) - 300 kl



Subsurface planroom (under kiosk/ amenities structure) for treatment of collected roof water prior to use in civic connector water feature irrigation of toilet flushing



Trench grates connected to SW mains



Pavement run-off directed to grated drains/ SW system



Pavement run-off directed to permeable landscape areas



Roof water catchment



Roof water diverted to water storage tank



Water collection overflow to storm water culvert (Hay Lackey drain)



Connection between stored water and plant room



NSW GOVERNMENT
Planning

Issued under the Environmental Planning and Assessment Act 1979

Approved Application No. MPO8-0093

- 8 MAR 2010

granted on the

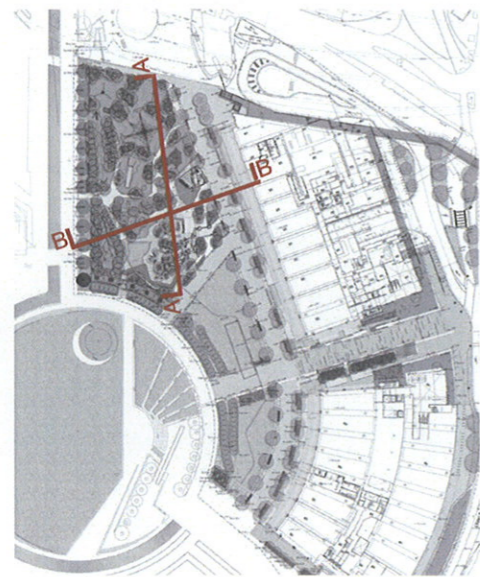
Signed S. Caldwell

Sheet No. 12 of 31



Seating steps | Water channels area | Mogul terrain zone | Senior slide and spinning area | Senior dynamic play area

SECTION AA




KEY PLAN



Phoenix avenue | Forest exploration area | Synchronised jets area | Baby / Toddler play | Pumping station | Pedestrian boulevard | Retail terrace

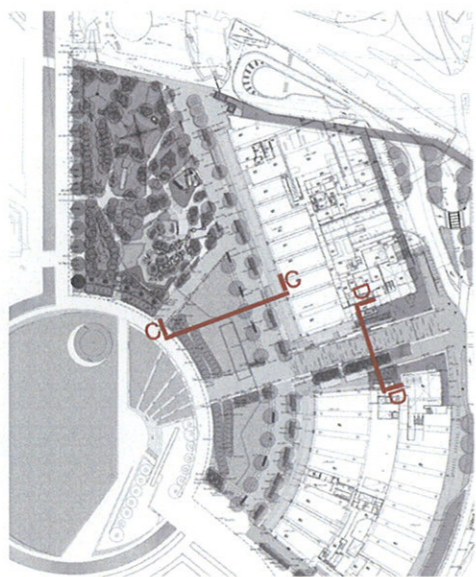
SECTION BB


NSW GOVERNMENT Planning
 Issued under the Environmental Planning and Assessment Act 1979
 Approved Application No... *MP08-0093*
 granted on the... *-8 MAR 2010*
 Signed... *E. Caldwell*
 Sheet No... *13* of *31*



Melaleuca grove Community green Pedestrian boulevard Retail terrace

SECTION CC




KEY PLAN



Retail terrace Civic Connector Water feature Feature tree planting Retail terrace

SECTION DD


NSW GOVERNMENT
 Planning

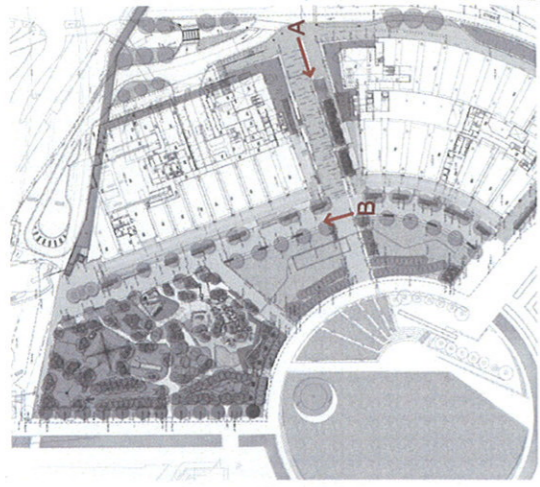
Issued under the Environmental Planning and Assessment Act 1979

Approved Application No. MPO8.0093

granted on the - 8 MAR 2010

Signed S. Caldwell

Sheet No. 14 of 31



KEY PLAN



A. CIVIC CONNECTOR



B. PEDESTRIAN BOULEVARD

NSW GOVERNMENT
Planning

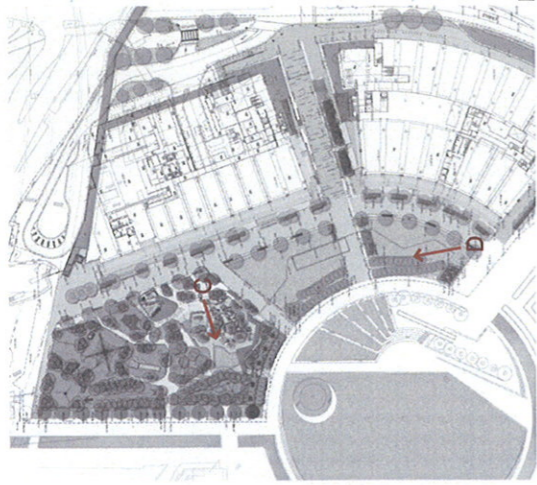
Prepared under the Environmental Planning and Assessment Act 1979

Development Application No. MP08 0093

Submitted on the 23/11/2010

Signature: Talbotwell

Sheet No. 15 of 31



KEY PLAN



C. WATER PLAY



D. COMMUNITY GREEN



NSW GOVERNMENT
Planning

Issued under the Environmental Planning and Assessment Act 1979

Approved Application No. MP 08-0093

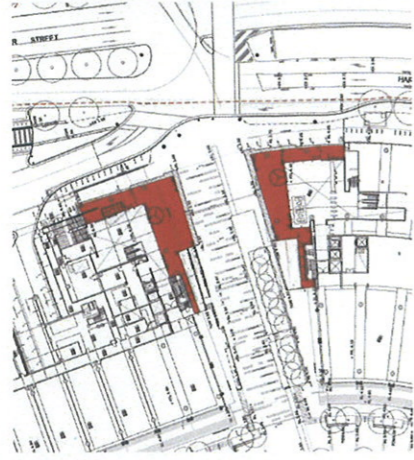
granted on the

Signed S. Caldwell

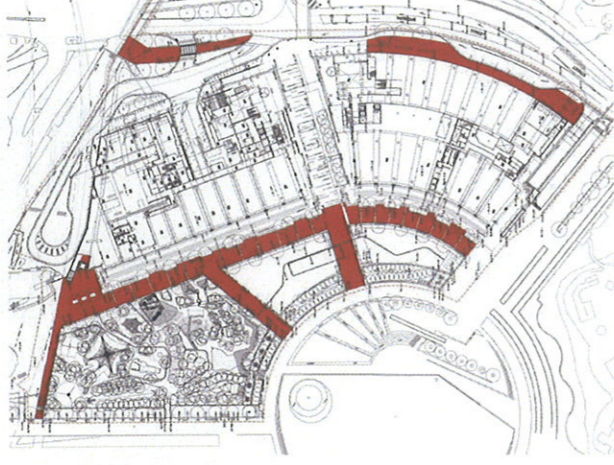
Sheet No. 16 of 31



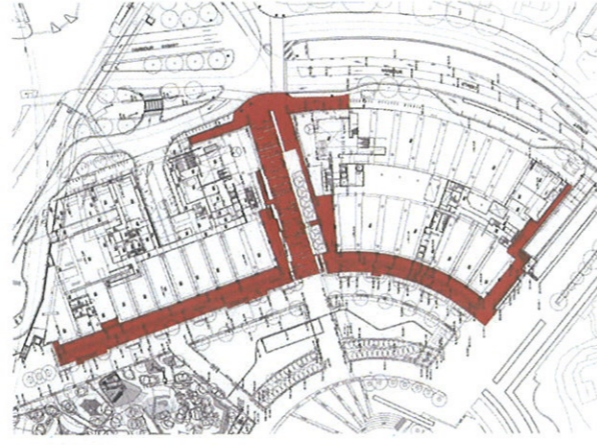
STONE PAVER
Austral Black Grey with exfoliated finish
(600 x 600 x 60mm)



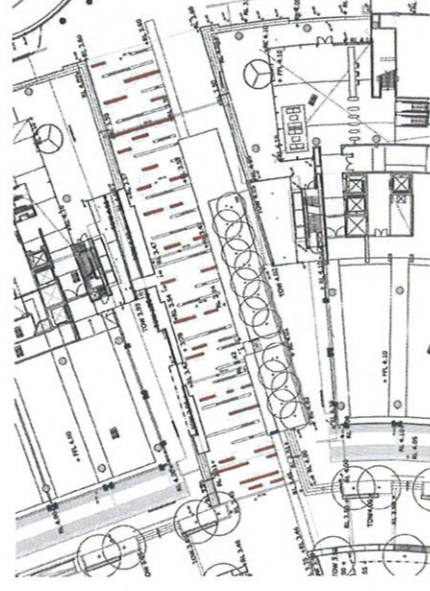
BRICK PAVER
Austral Bricks 'Gertrudis Brown'
(230 x 110 x 76mm)



CONCRETE PAVER
Stonevue paving 'Langwarren Blue'
in honed and shot blasted finish
(300 x 300 x 60 & 600 x 300 x 60)



CONCRETE PAVER
Stonevue paving 'Barossa White'
in honed and shot blasted finish
(300 x 300 x 60 & 600 x 300 x 60)



EXPOSED AGGREGATE CONCRETE
Portland grey cement with high quality 7-14mm aggregate. Aggregate to be custom mix of crushed stones including quartz, basalt and porphyry



CONCRETE FLUSH EDGE
Width of edge varies. Edges to be precast or insitu. Precast edges include text cast in



NSW GOVERNMENT
Planning

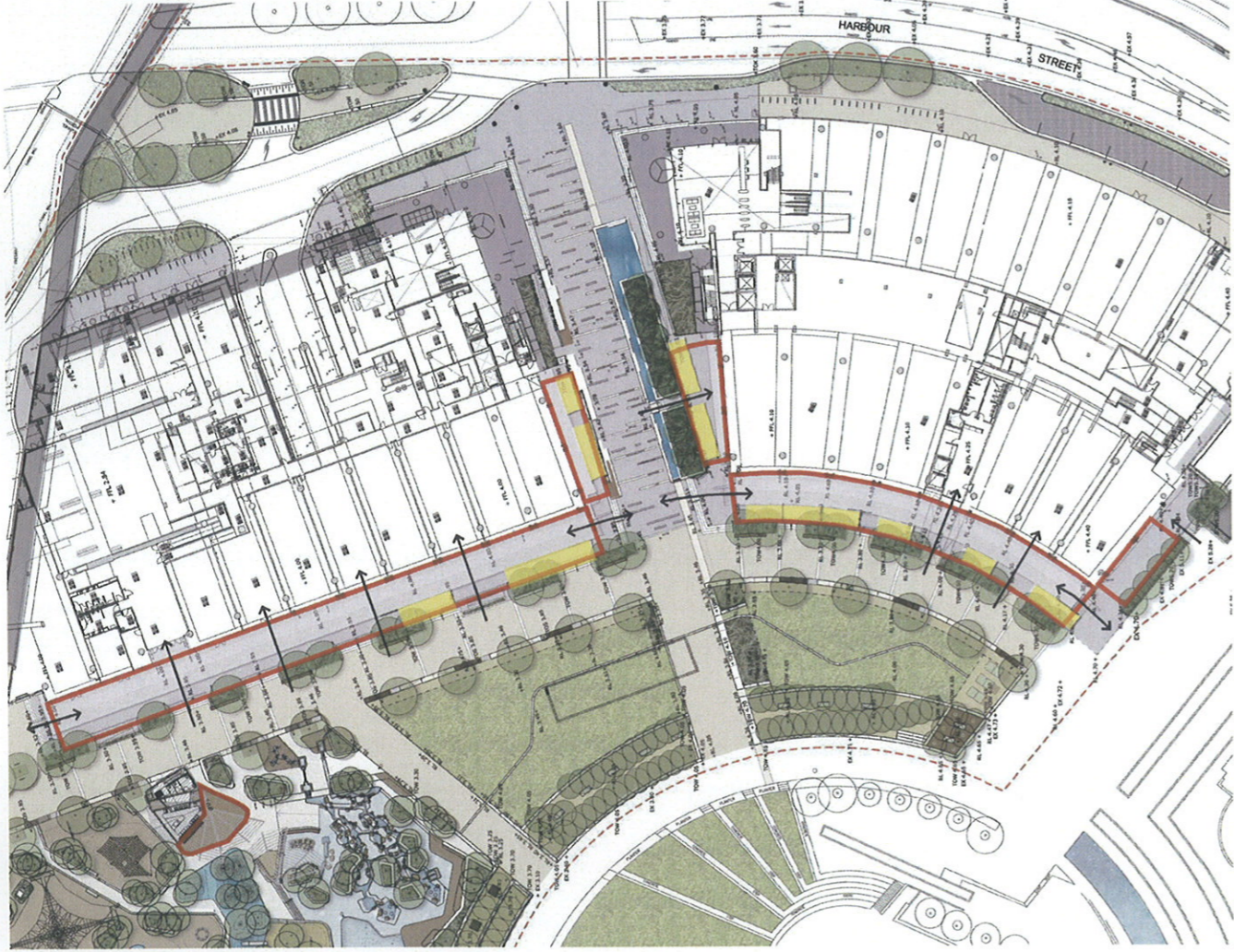
Issued under the Environmental Planning and Assessment Act 1979

Approved Application No. *MP08.0093*

granted on the... *-8 MAR 2010*

Signed... *S. Caldwell*

Sheet No. *17*of..... *31*



MASTER PLAN

- Key:**
- Retail seating zone - Loose tables and chairs
 - Potential space for use of umbrellas (outside line of awning over)
 - Clear pedestrian movement through seating zones

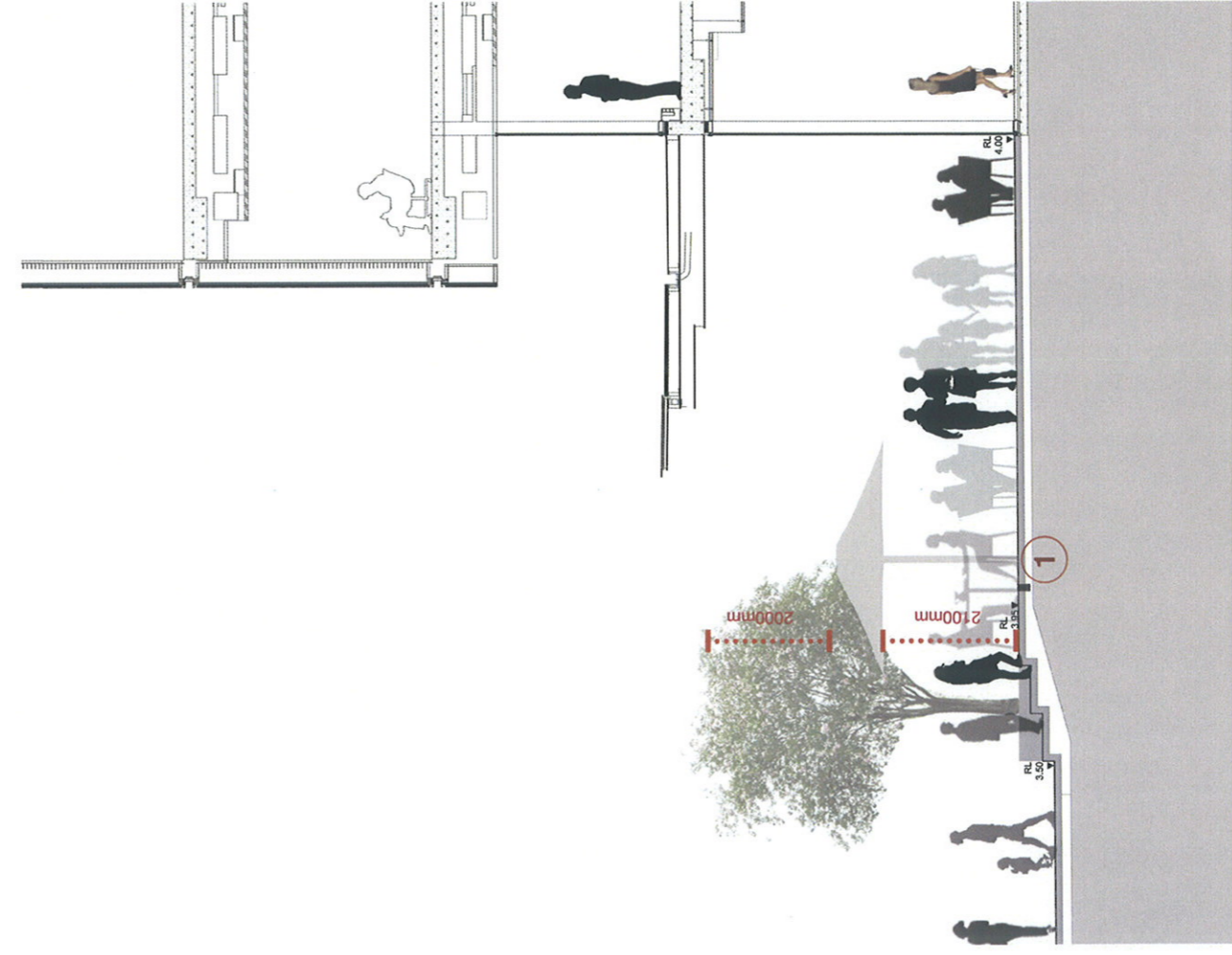
Umbrella precedent images



Opera Bar, Sydney

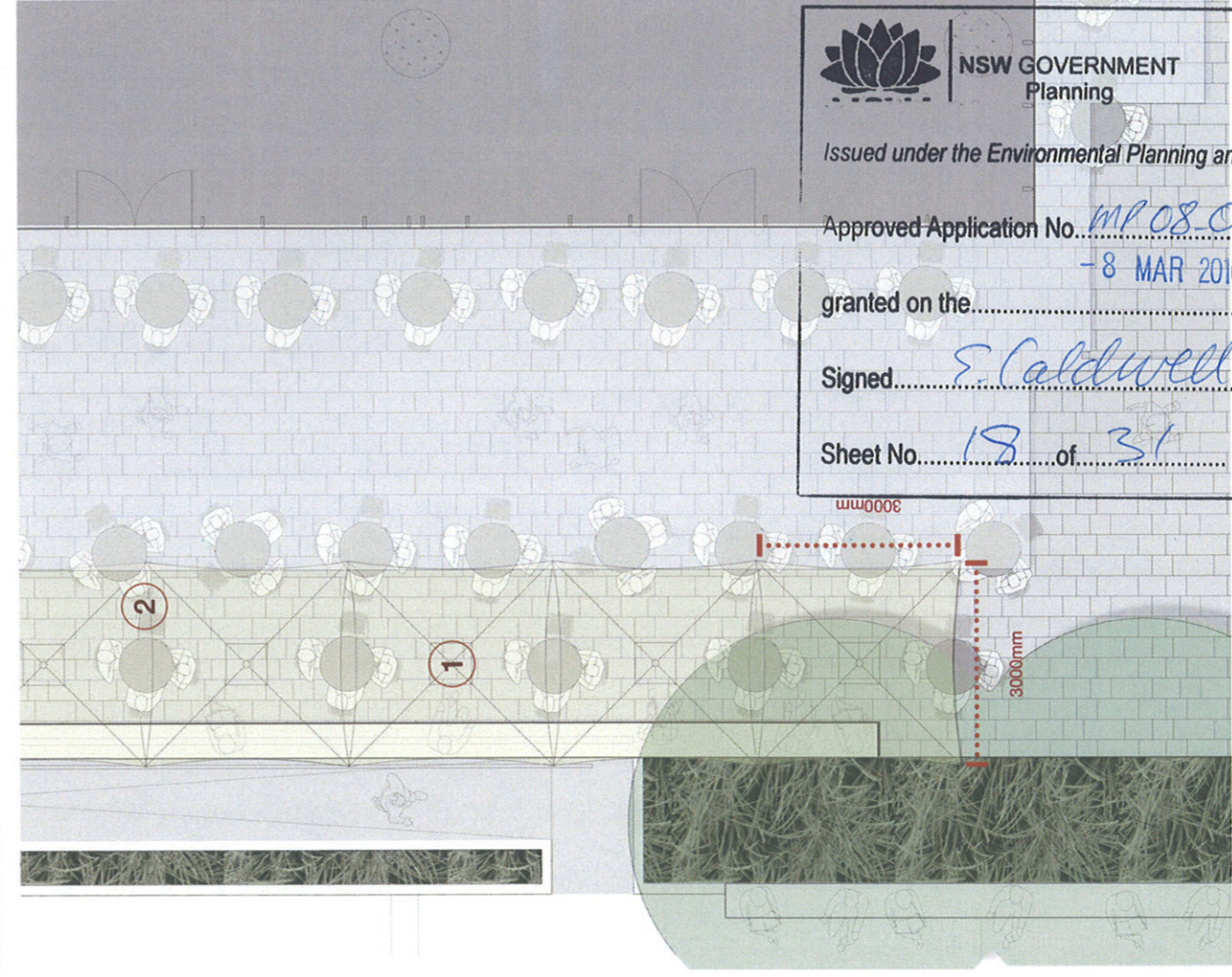


The Rocks, Sydney



RETAIL SEATING ZONE - SECTIONAL ELEVATION

- KEY**
1. Spigot in paving slab for removable umbrella



RETAIL SEATING ZONE - TYPICAL DETAIL PLAN

- KEY**
1. Custom designed umbrellas with integrated heating. Fabric type and colour to be confirmed
 2. Linked umbrella canopies

NSW GOVERNMENT Planning

Issued under the Environmental Planning and Assessment Act 1979

Approved Application No. MP 08 0093

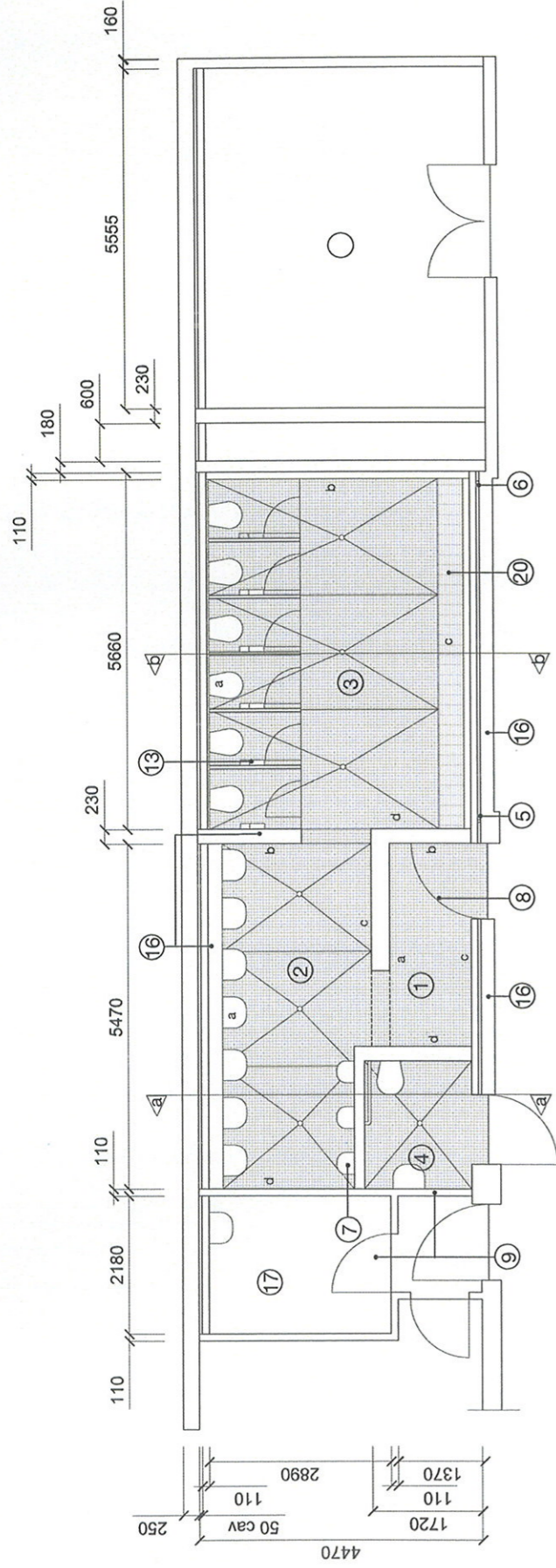
granted on the 8 MAR 2010

Signed S. Caldwell

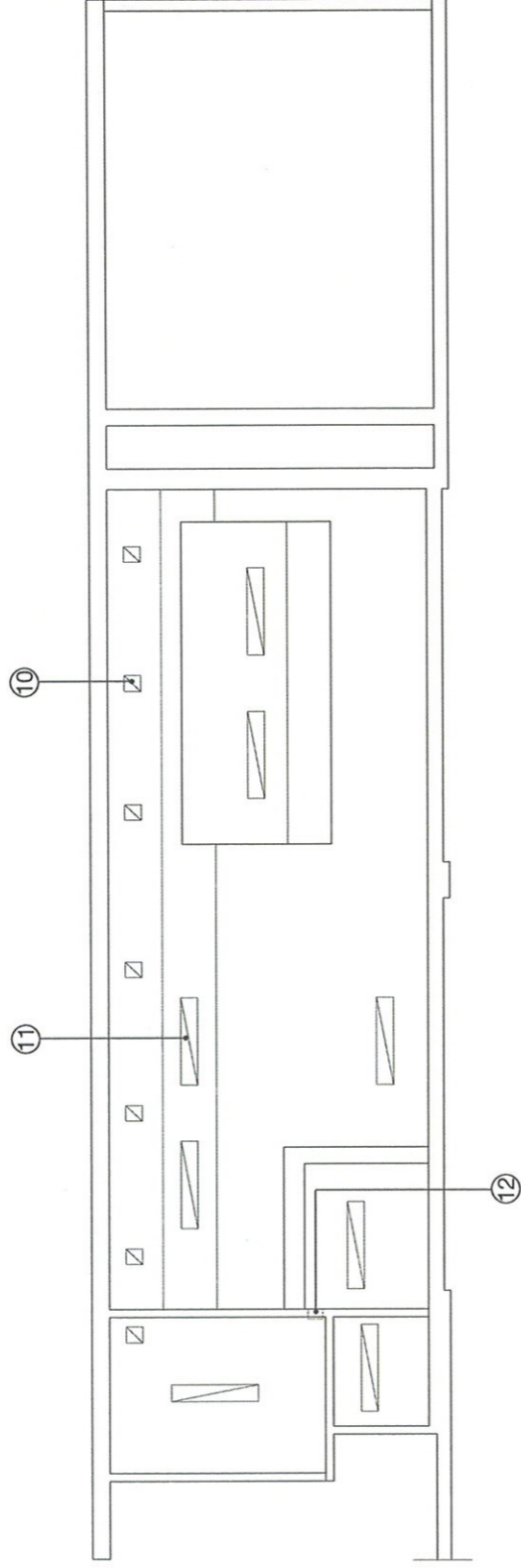
Sheet No. 18 of 31

Proposed Retail Seating Zones
 Diag no.: LD44527
 Ref: B

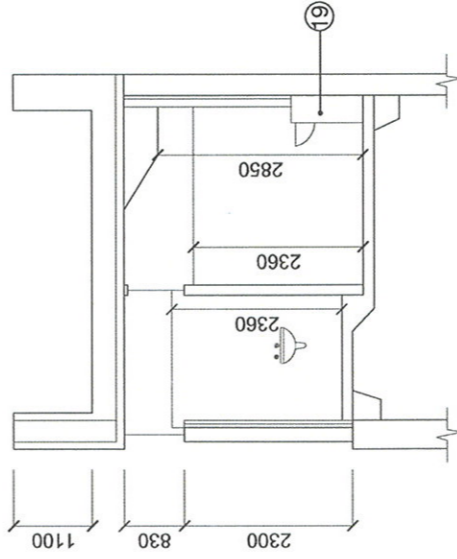
Client:



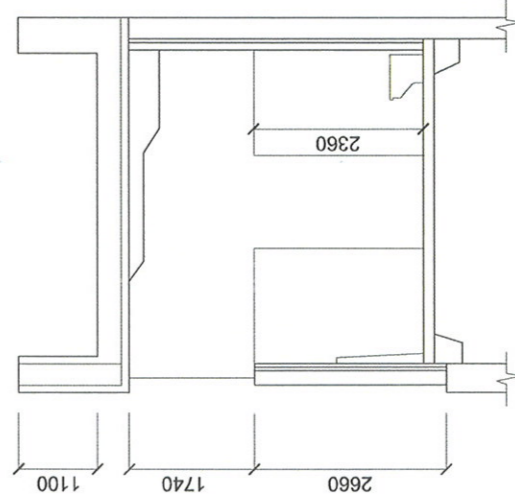
PLAN 1:100



REFLECTED CEILING PLAN 1:100



SECTION a:a 1:100

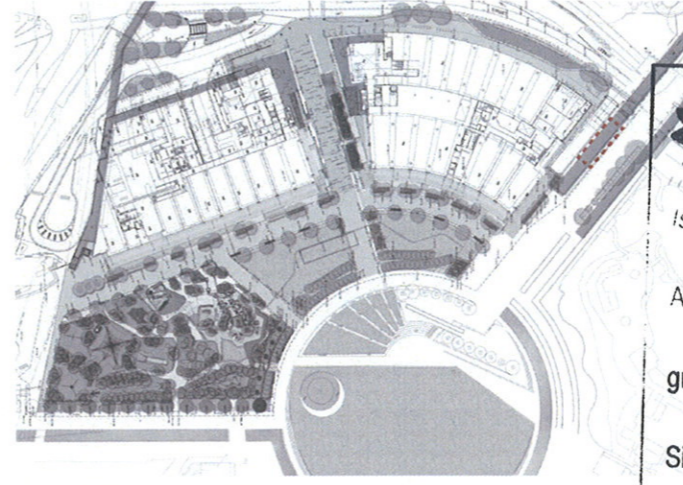


SECTION b:b 1:100

NOTES

1. Entry
2. Washroom
3. WC
4. Disabled WC Compliant with AS 1428
5. Water Supply
6. Sewer Connection
7. 3 x Hand driers (re-instate existing)
8. Re-instate existing gate
9. New doors to match existing in Female WC
10. Replace ceiling ventilation and bulkhead
11. Light fittings: Twin 36 Watt Vandal proof surface mount
12. Possible new mechanical ventilation
13. 2 x stainless steel vandal proof paper dispensers to each WC
14. Sharps Bin to match Female WC
15. 2 x Air freshners to match Female WC
16. Masonry Walls clad in tiles
17. Existing store to be re-instated
18. Existing Switchroom
19. Dwarf Masonry wall clad in tiles
20. Stainless steel vandal proof urinal trough with low flow flush

CONTEXT PLAN



NSW GOVERNMENT
Planning

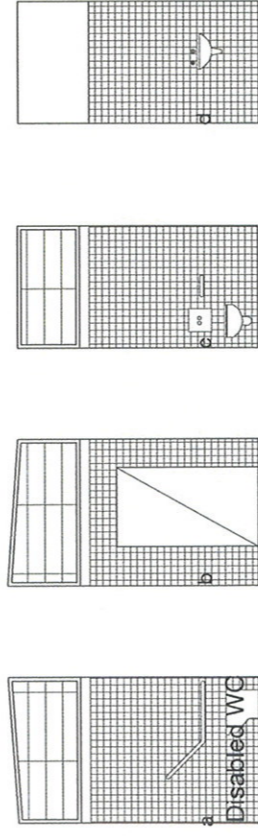
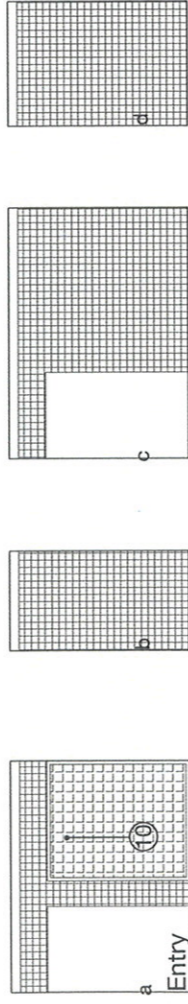
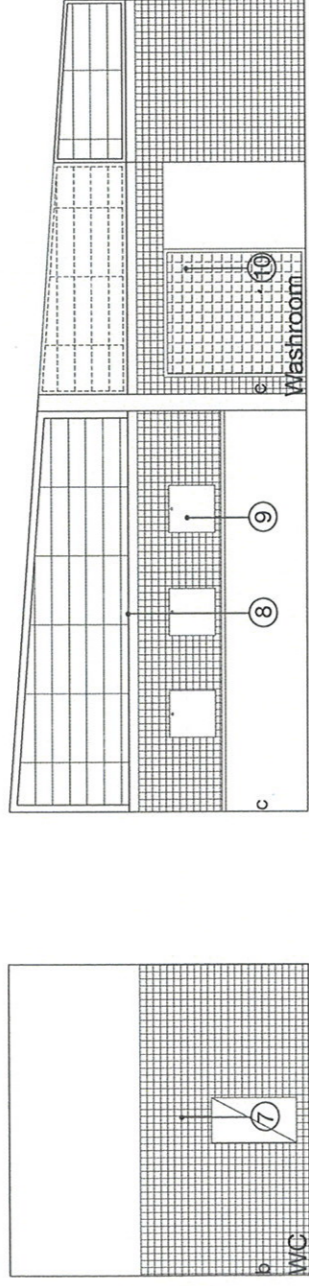
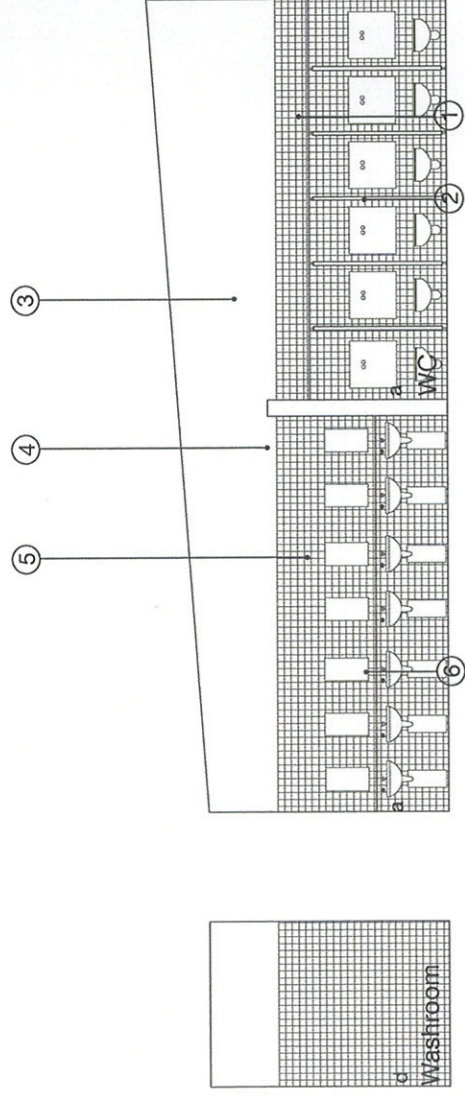
Issued under the Environmental Planning and Assessment Act 1979

Approved Application No. MPO8-0093

granted on the - 8 MAR 2010

Signed S. Caldwell

Sheet No. 19 of 31

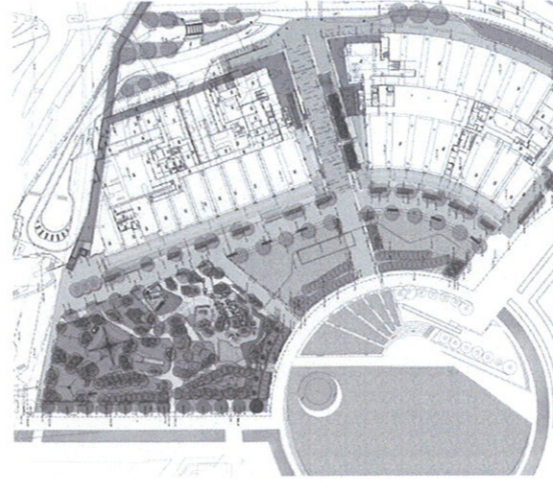


INTERNAL ELEVATIONS 1:100

NOTES

1. 650 x 650 Stainless steel cistern cover 700mm above FFL
2. 50mm thick Terrazzo partition walls to match Female WC 70mm above FFL. Re-instate existing doors
3. Clip on stainless steel railing 180mm above partitions
4. 320 x 600 mirrors to match Female WC 100mm above shelf
5. Press Taps (low water use) and basin to match Female WC (cold water only)
6. 240 x 540 stainless steel access panels for recessed pipe work
7. Stainless steel access panel to match Female WC
8. Stainless steel Cistern cover to urinal
9. Stainless steel vandal proof urinal trough
10. Glass block wall to match Female WC
11. 197 x 197 Waringa Johnson Tiles in colours 612906, 612723, 612717
12. 197 x 197 Waringa Johnson Floor tiles in colour 711172

CONTEXT PLAN



NSW GOVERNMENT
Planning

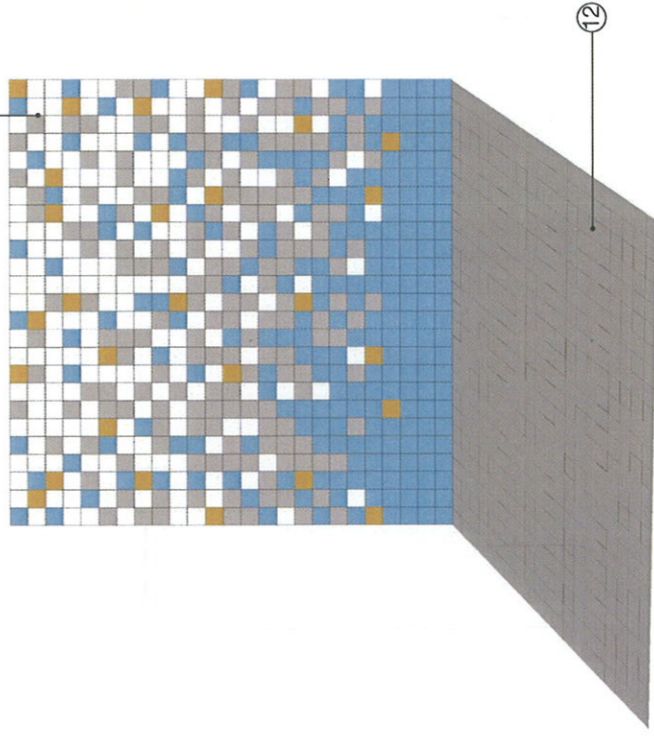
Issued under the Environmental Planning and Assessment Act 1979

Approved Application No. MP08-0093

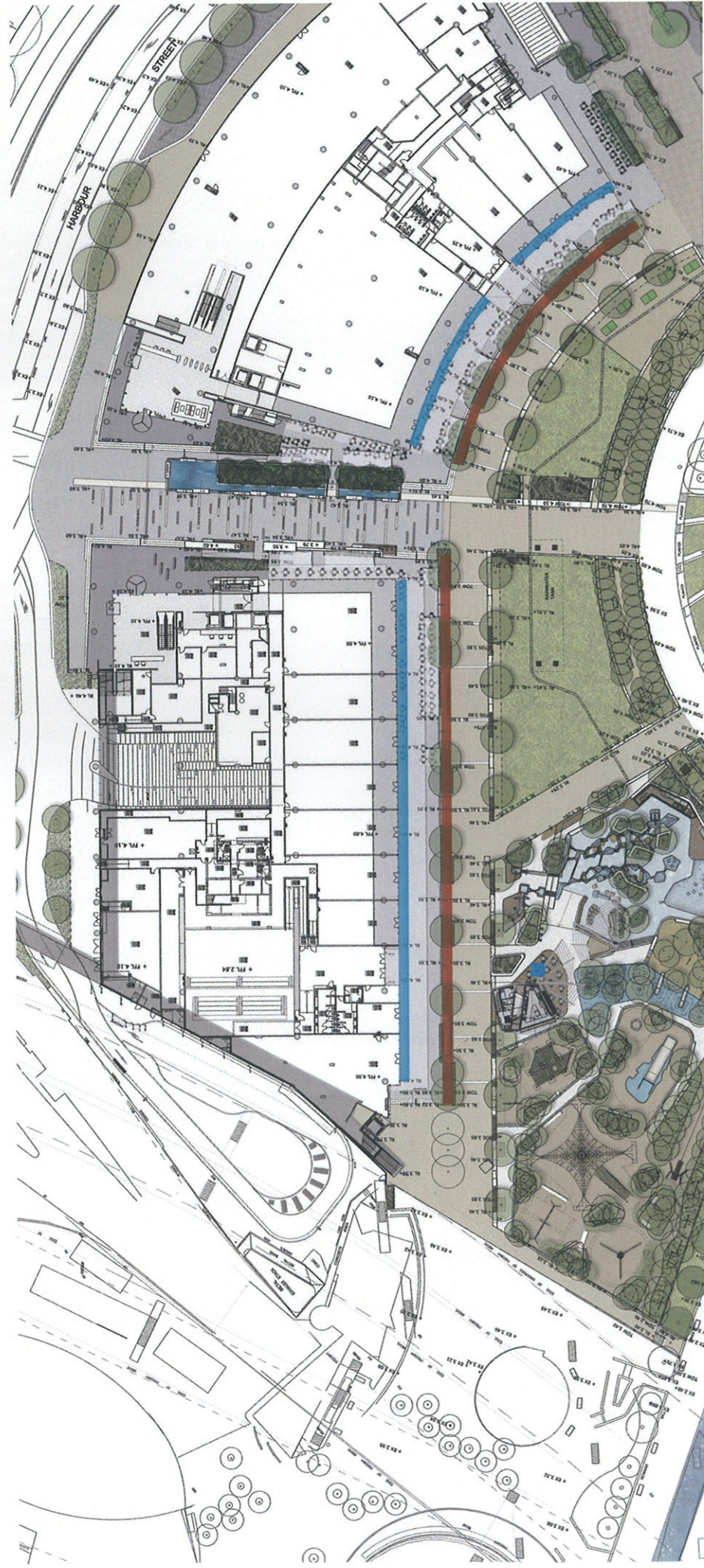
granted on the -8 MAR 2010

Signed E Caldwell

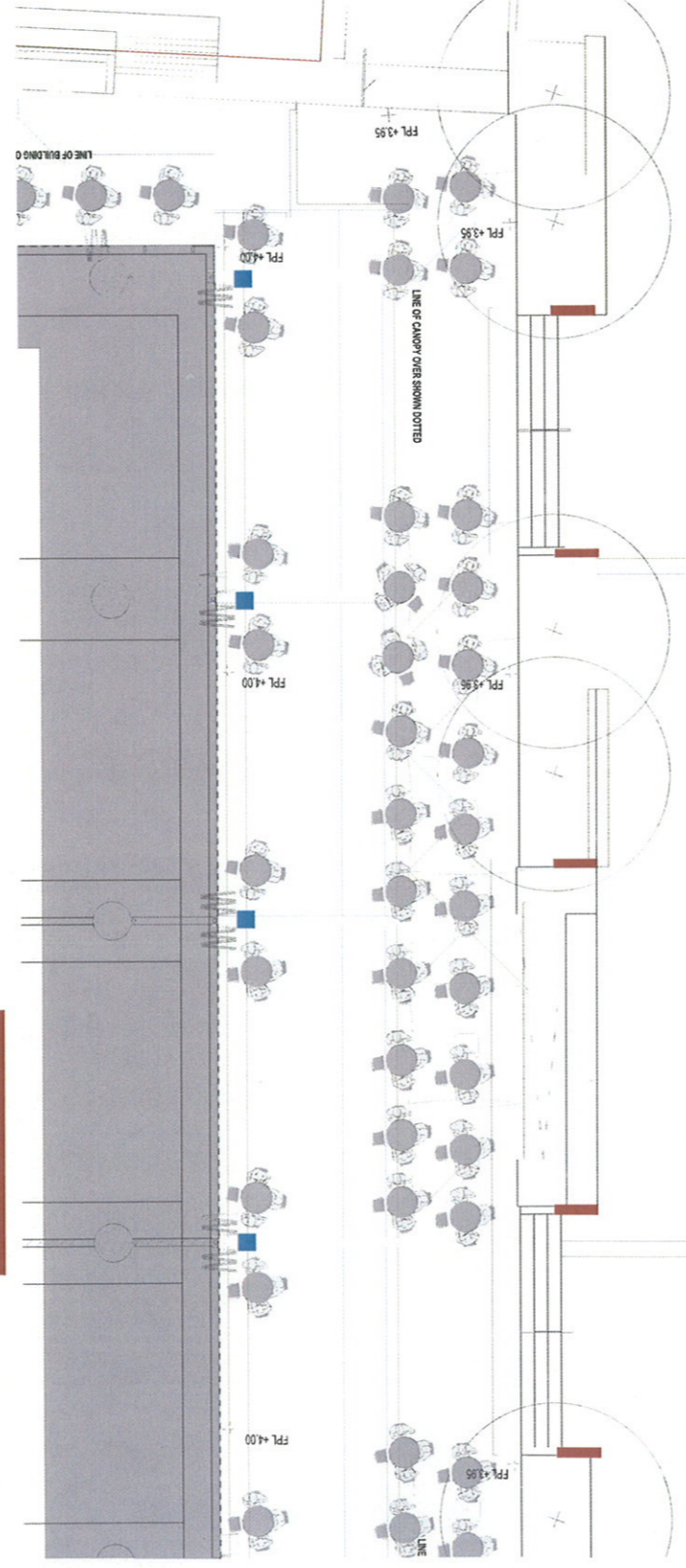
Sheet No. 20 of 31



PROPOSED TILE PATTERN



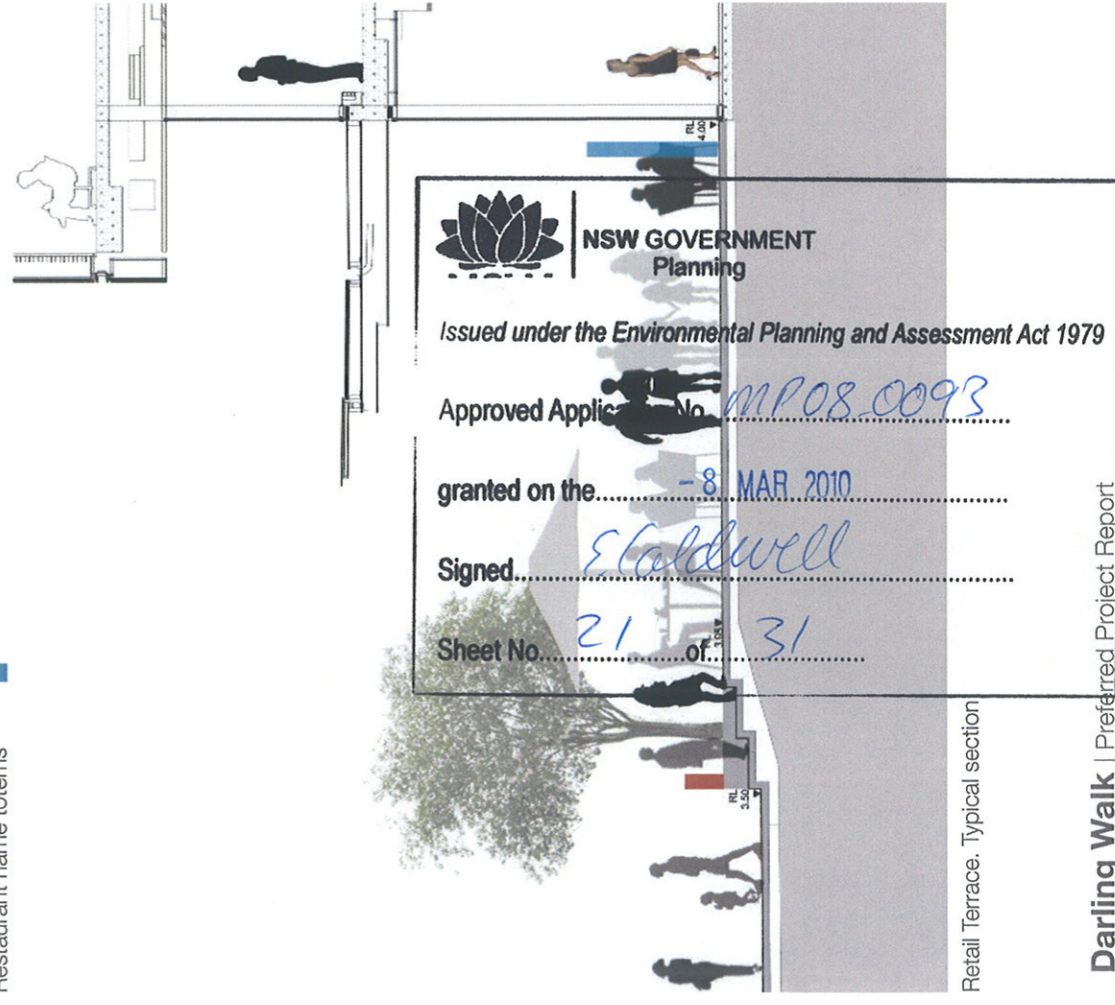
Retail signage zones



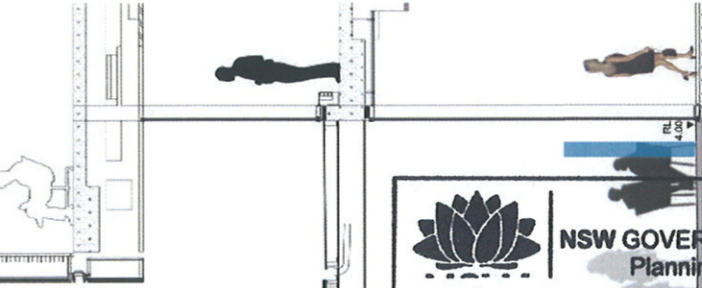
Location plan

Menu boards/tennancy name

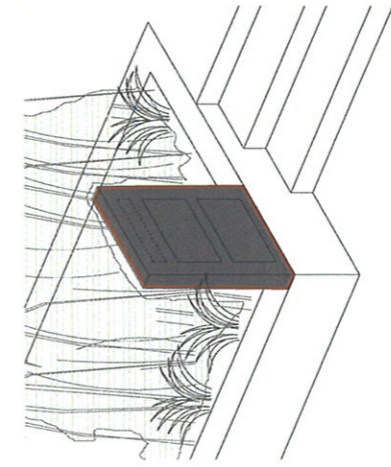
Restaurant name totems



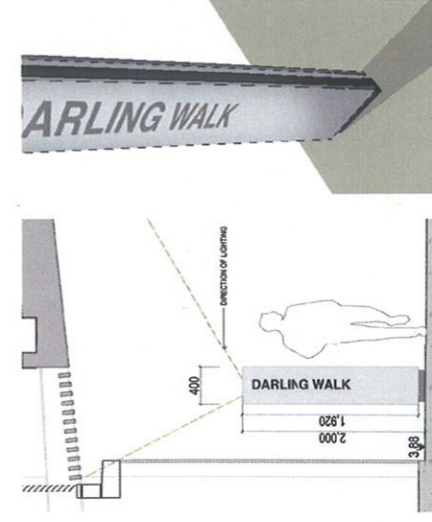
Retail Terrace. Typical section



Menu board/tennancy name signage - sketch

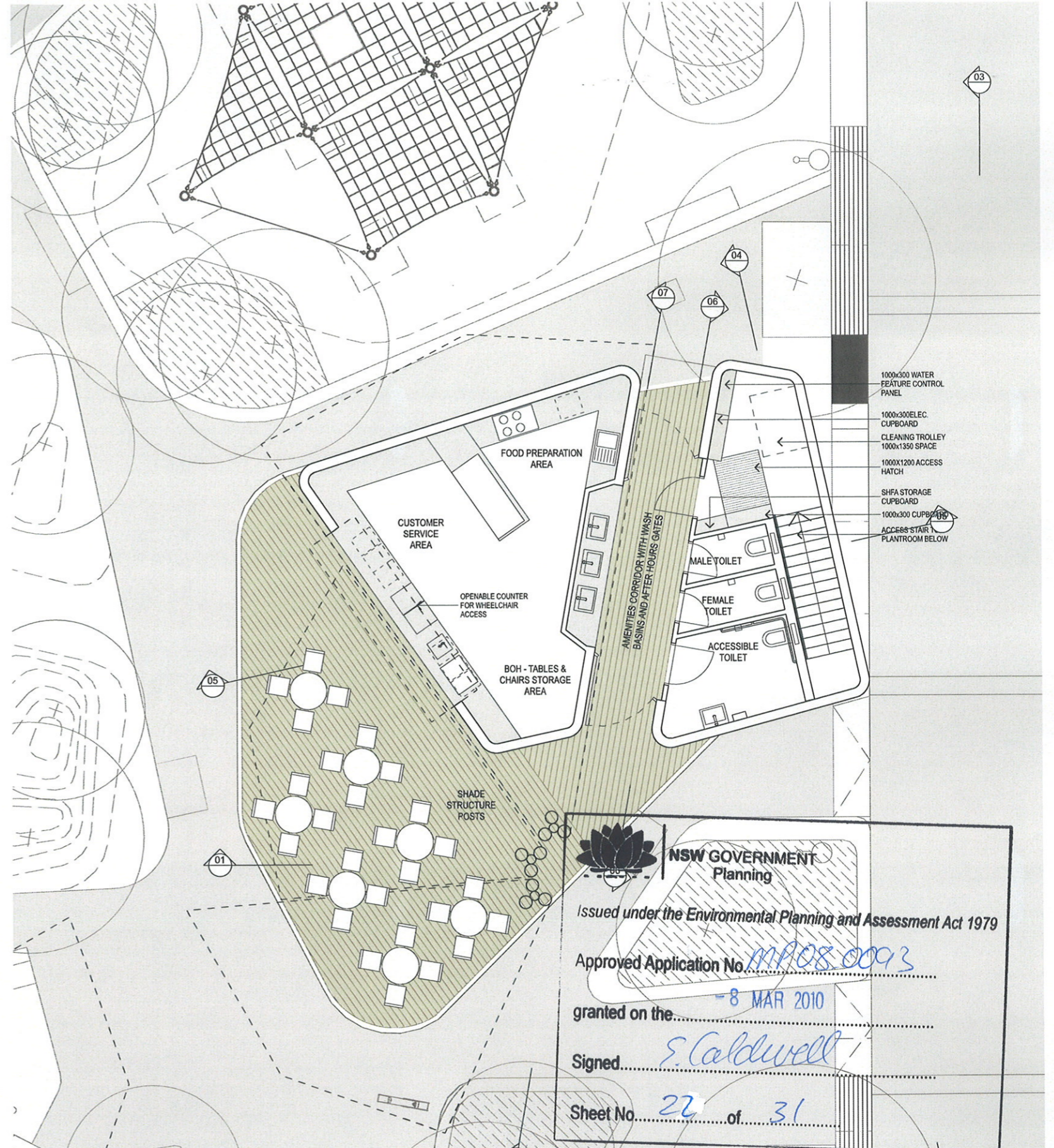
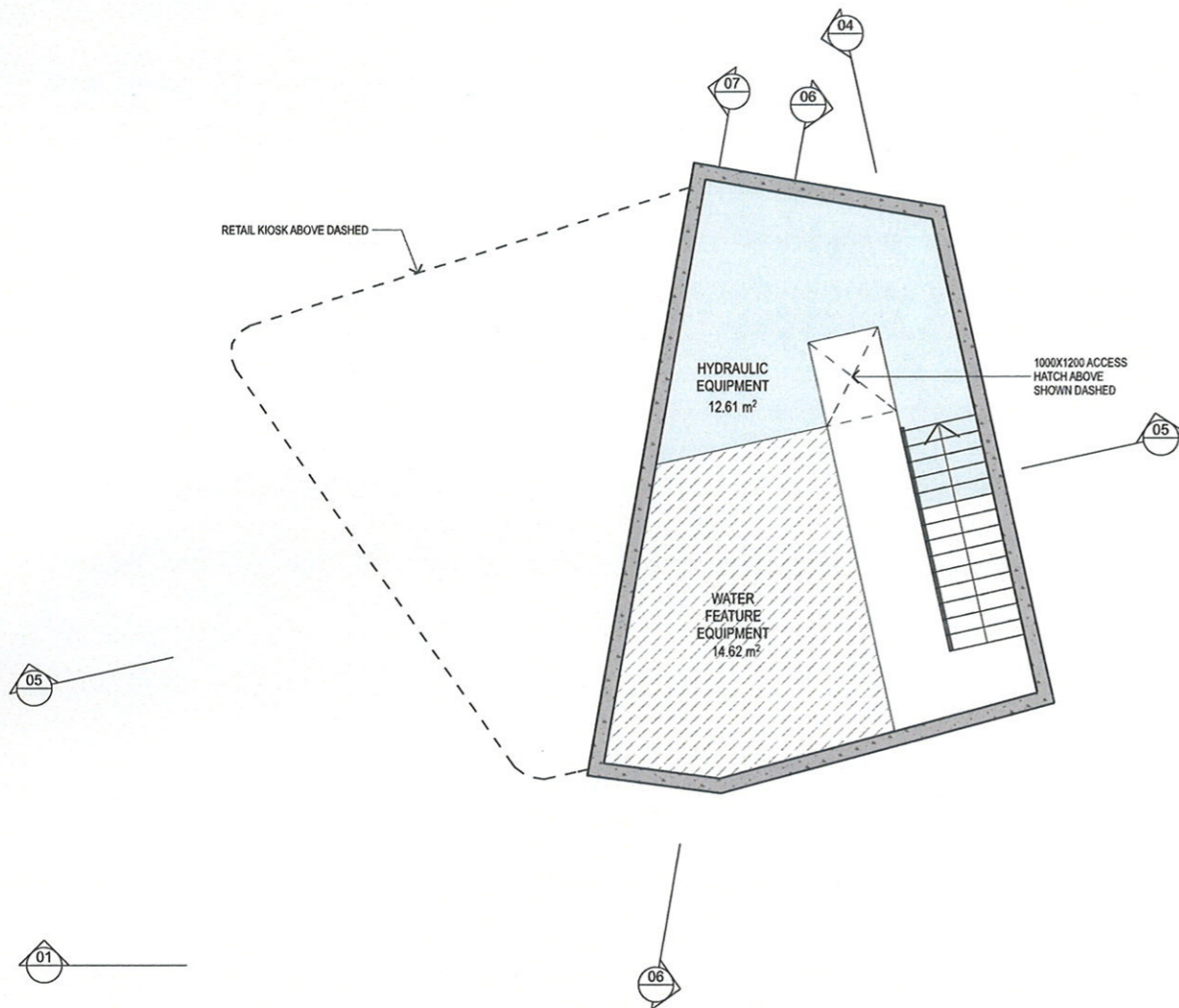


Totem signage - sketch perspective



Signage Description

- > Menu boards or tennancy name signs will be in three different sizes. Maximum size 1800 x 1800, minimum size 1200 x 900.
- > Provide tenants name totem signage (refer sketch perspective). Size to be approx. 2100mm height/ 300 x 300mm width
- > Materials should compliment the materials used for the overall project: steel, timber and glass
- > Menu boards/ totems to include integral lighting
- > Each shall be easily accessible (internally) for menu changes



NSW GOVERNMENT Planning

Issued under the Environmental Planning and Assessment Act 1979

Approved Application No. *MP08/0093*

granted on the *8 MAR 2010*

Signed *S. Caldwell*

Sheet No. *22* of *31*

NSW GOVERNMENT
Planning

Issued under the Environmental Planning and Assessment Act 1979

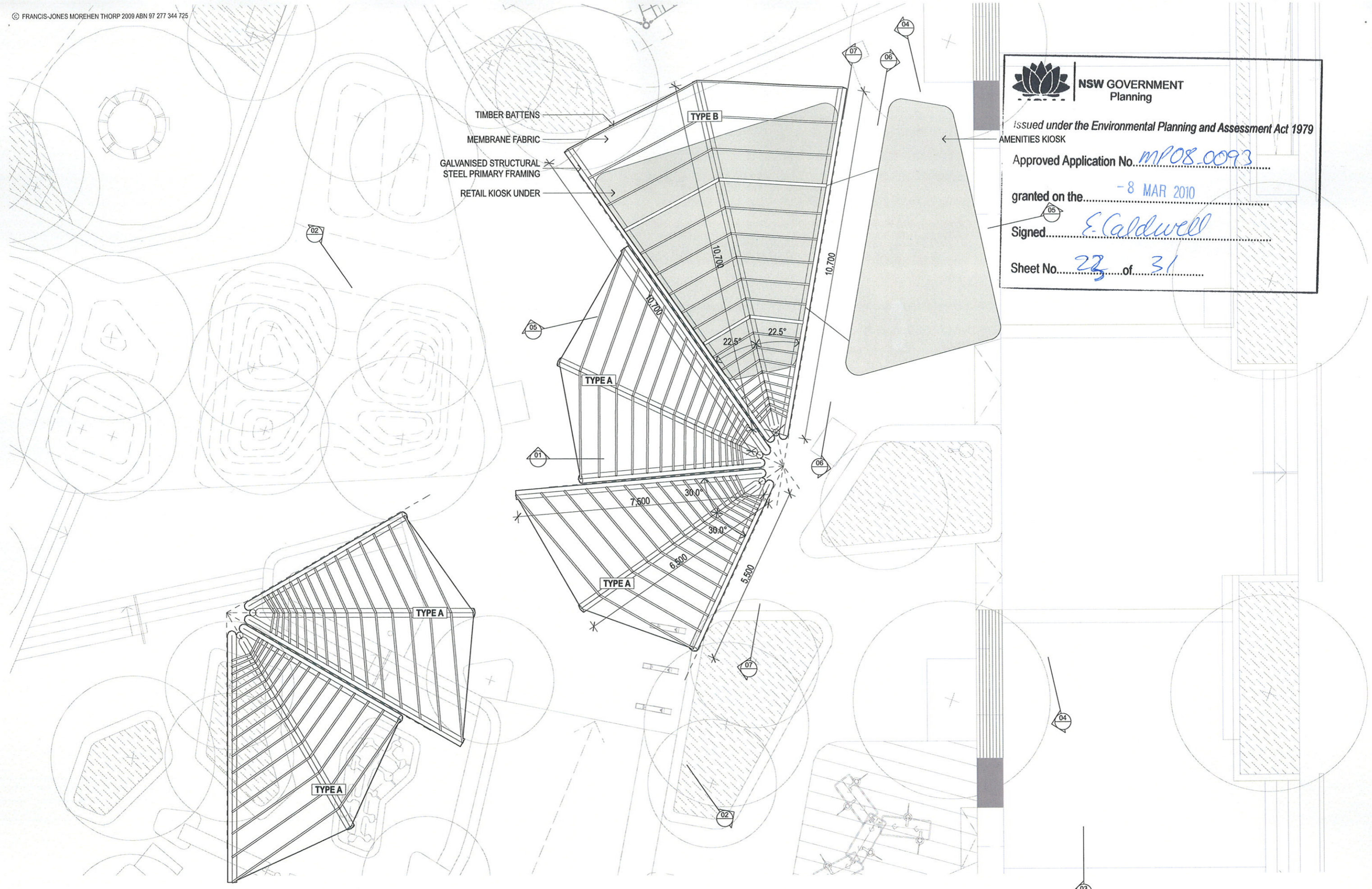
AMENITIES KIOSK

Approved Application No. *MP08.0093*

granted on the *-8 MAR 2010*

Signed *E. Caldwell*

Sheet No. *22* of *31*





NSW GOVERNMENT
Planning

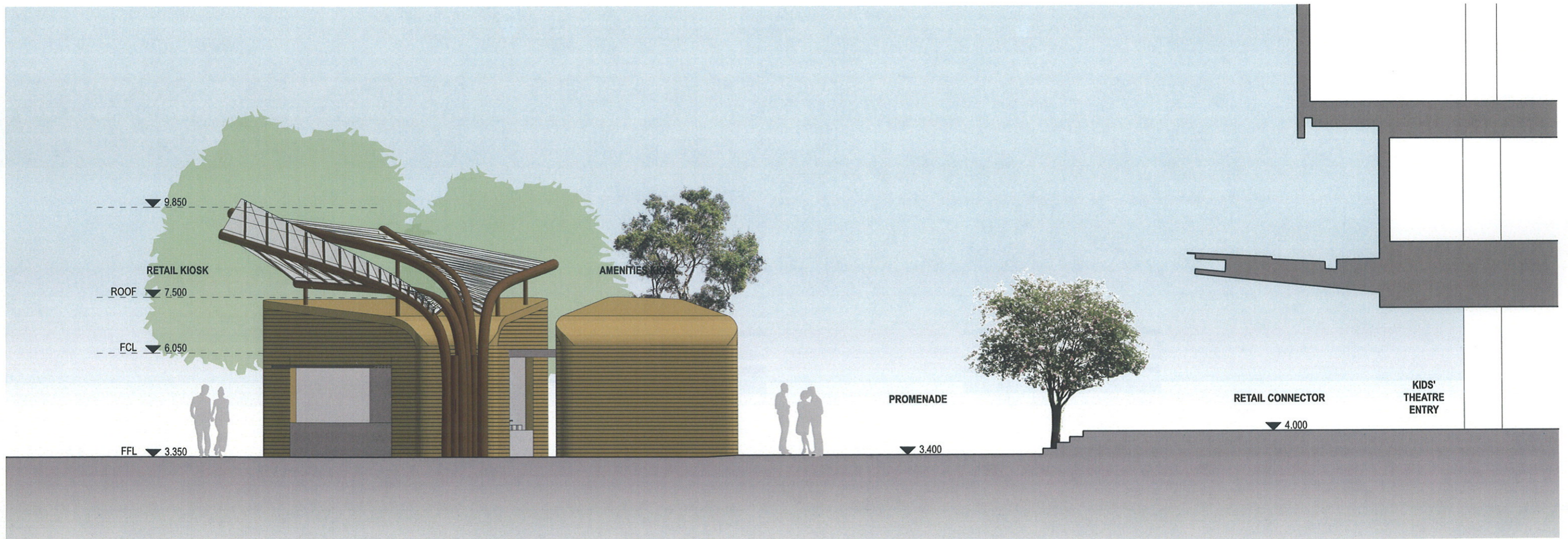
Issued under the Environmental Planning and Assessment Act 1979

Approved Application No. *MP08_0093*

granted on the *-8 MAR 2010*

Signed *E. Caldwell*

Sheet No. *24* of *31*



Section at Theatre Entrance
1:100



NSW GOVERNMENT
Planning

Issued under the Environmental Planning and Assessment Act 1979

Approved Application No. MP08 0093

granted on the - 8 MAR 2010

Signed E. Caldwell

Sheet No. 25 of 31



West Elevation
1:100



NSW GOVERNMENT
Planning

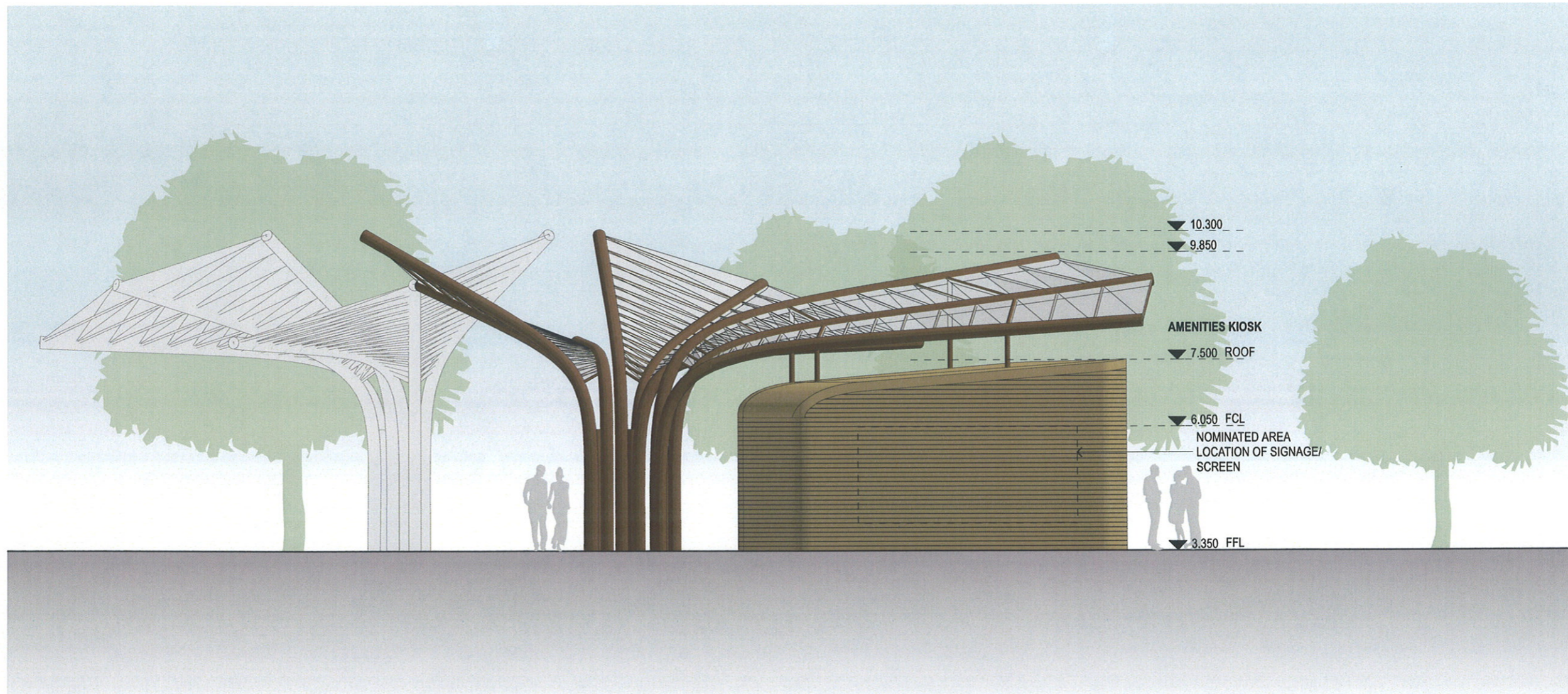
Issued under the Environmental Planning and Assessment Act 1979

Approved Application No. *MP08-0093*

granted on the *-8 MAR 2010*

Signed *E. Caldwell*

Sheet No. *26* of *31*



East Elevation
1:100



NSW GOVERNMENT
Planning

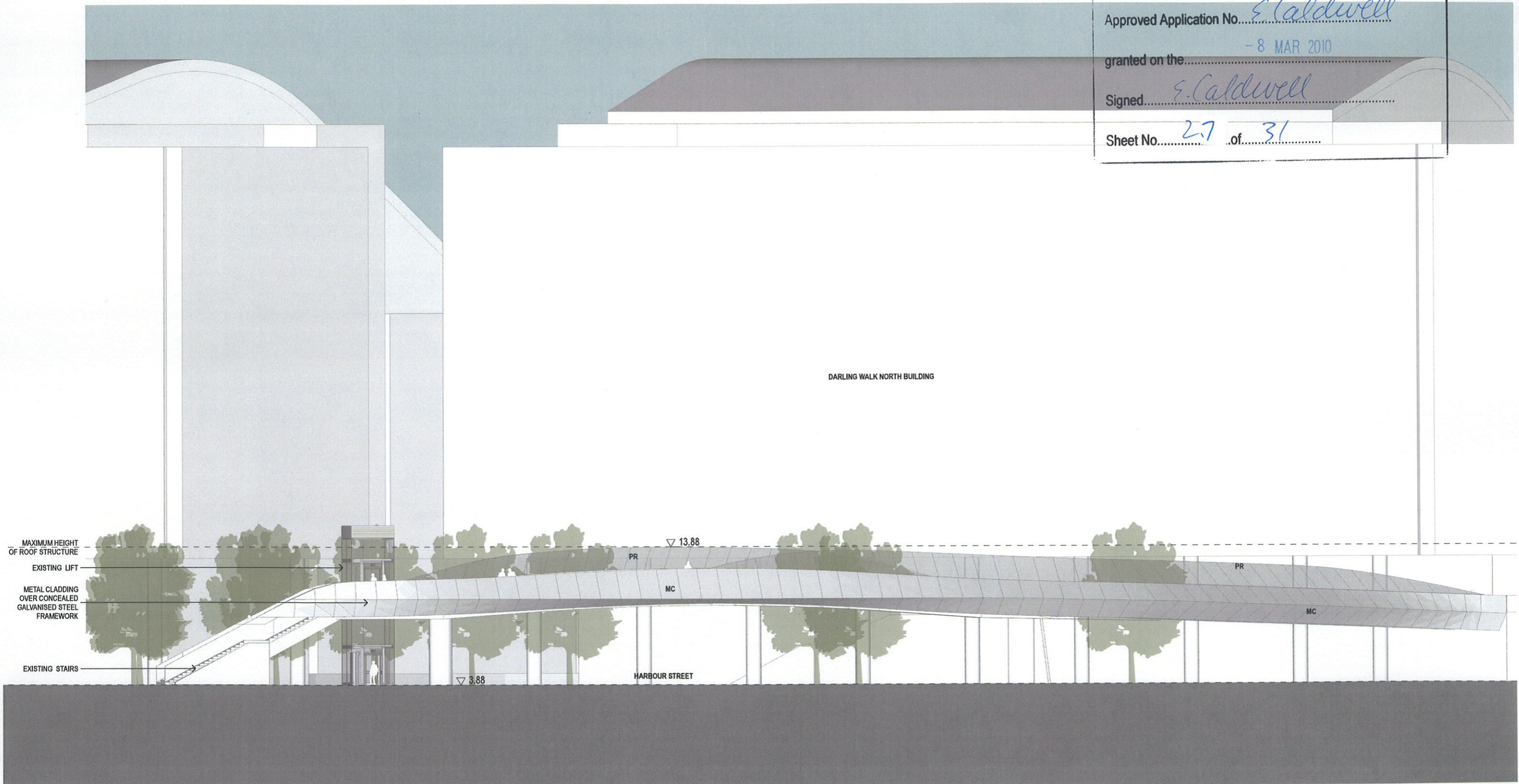
Issued under the Environmental Planning and Assessment Act 1979

Approved Application No. *E. Caldwell*

granted on the *- 8 MAR 2010*

Signed *E. Caldwell*

Sheet No. *27* of *31*



Footbridge Elevation
1:250





NSW GOVERNMENT
Planning

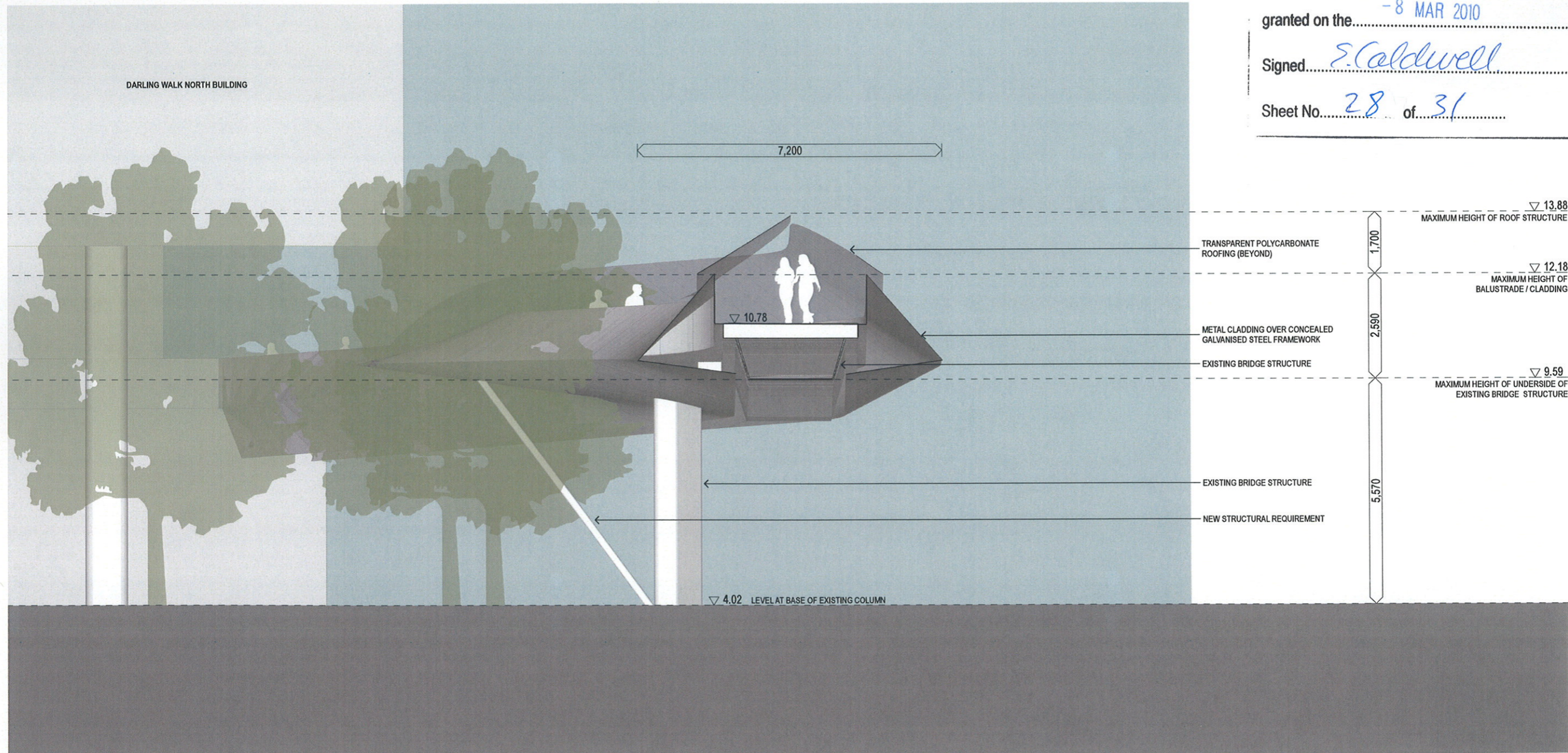
Issued under the Environmental Planning and Assessment Act 1979

Approved Application No. *MP08_0093*

granted on the *-8 MAR 2010*

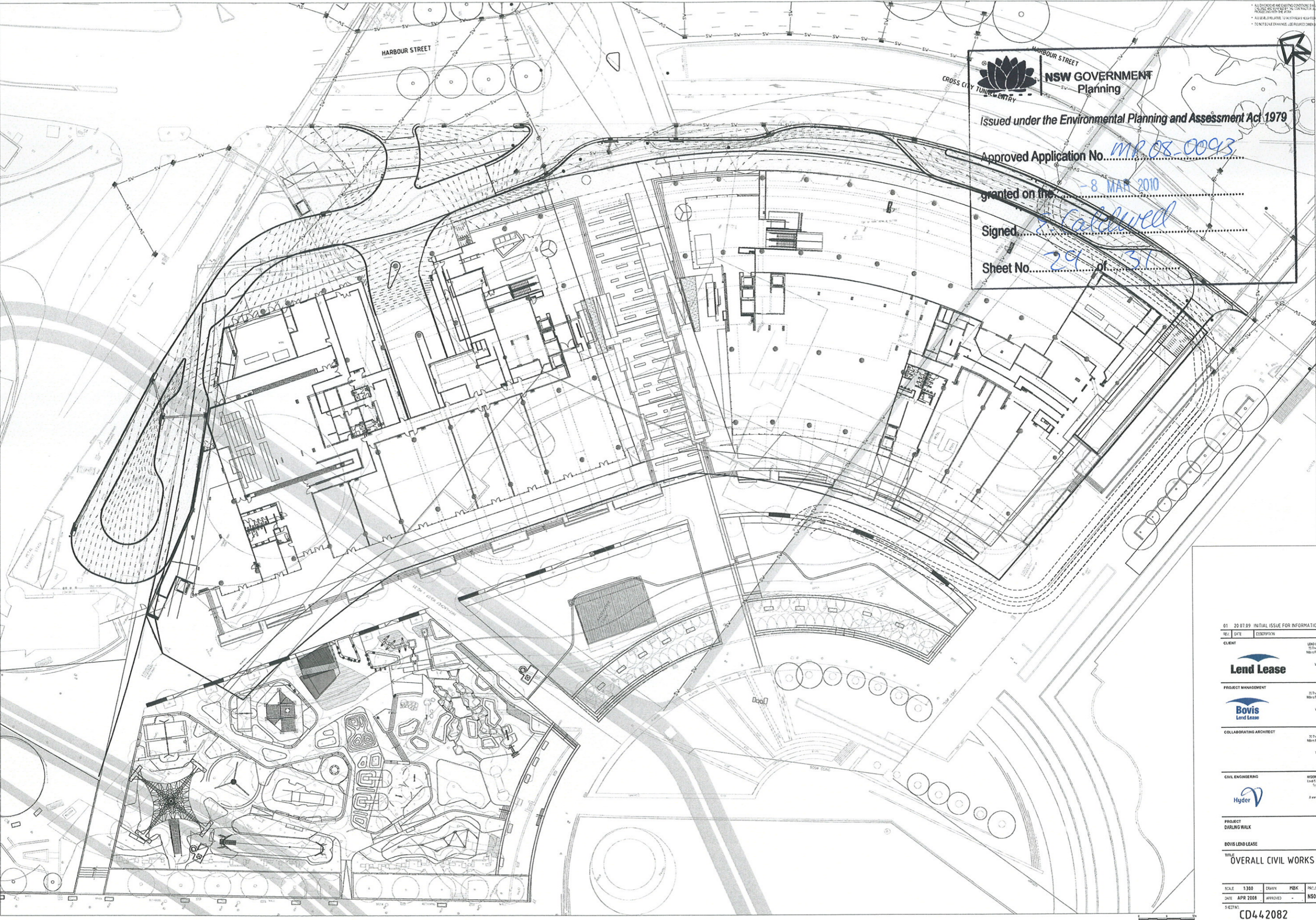
Signed *S. Caldwell*

Sheet No. *28* of *31*



Footbridge Section
1:100

GENERAL NOTES
• ALL DIMENSIONS ARE LEASTING UNLESS OTHERWISE SPECIFIED
• ALL DIMENSIONS ARE TO FACE UNLESS OTHERWISE SPECIFIED
• ALL LEVELS RELATIVE TO AUSTRALIAN SEA LEVEL UNLESS OTHERWISE SPECIFIED
• TO CONTACT ENGINEER, USE PROVIDED CONTACT DETAILS



CROSS CITY TUNNEL ENTRY

NSW GOVERNMENT
Planning

Issued under the Environmental Planning and Assessment Act 1979

Approved Application No. *MP 08 0093*

granted on the *8 MAR 2010*

Signed *[Signature]*

Sheet No. *29* of *31*

01	20 07 09	INITIAL ISSUE FOR INFORMATION	MSK
REV	DATE	DESCRIPTION	BY
CLIENT			
Lend Lease		LEND LEASE DEVELOPMENT 25 The Esplanade Sydney NSW 2011 T +61 2 9221 5111 F +61 2 9221 5111 www.lendlease.com.au	
PROJECT MANAGEMENT			
Bovis Lend Lease		BOVIS LEND LEASE 25 The Esplanade Sydney NSW 2011 T +61 2 9221 5111 F +61 2 9221 5111 www.lendlease.com.au	
COLLABORATING ARCHITECT			
Hyder		LEND LEASE DESIGN 25 The Esplanade Sydney NSW 2011 T +61 2 9221 5111 F +61 2 9221 5111 www.lendlease.com.au	
CIVIL ENGINEERING			
Hyder		HYDER CONSULTING PTY LTD Level 11, 100 Market Street Sydney NSW 2000 T +61 2 9221 5111 F +61 2 9221 5111 www.hyder.com.au	
PROJECT DARLING WALK			
BOVIS LEND LEASE			
TITLE OVERALL CIVIL WORKS PLAN			
SCALE	1:300	DRAWN	MSK
DATE	APR 2008	APPROVED	NS03788
PROJECT CODE			NS03788
SHEET NO.			01
SHEET NO.			CD442082