

# Environmental Assessment Design Statement

Darling Walk Public Domain  
Kiosks, Shade Structures & Bathurst Street Footbridge Augmentation

July 2009



## Document Content

### **1.0 Introduction**

### **2.0 Concept**

- 2.1 Concept Principles
- 2.2 Design Principles

### **3.0 Design**

- 3.1 Kiosks
- 3.2 Shade Structures
- 3.3 Bathurst Street Footbridge
- 3.4 Bathurst Street Footbridge - Project Views

### **4.0 Architectural Drawings**

- 4.1 Site Plan
- 4.2 Amenities & Retail Kiosks Floor Plan
- 4.3 Shade Structures Plan
- 4.4 Shade Structures & Kiosk South Elevation
- 4.5 Retail Kiosk West Elevation
- 4.6 Retail Kiosk East Elevation
- 4.7 Amenities Kiosk West Elevation
- 4.8 Amenities Kiosk East Elevation
- 4.9 Bathurst Street Footbridge North Elevation
- 4.95 Bathurst Street Footbridge Typical Section



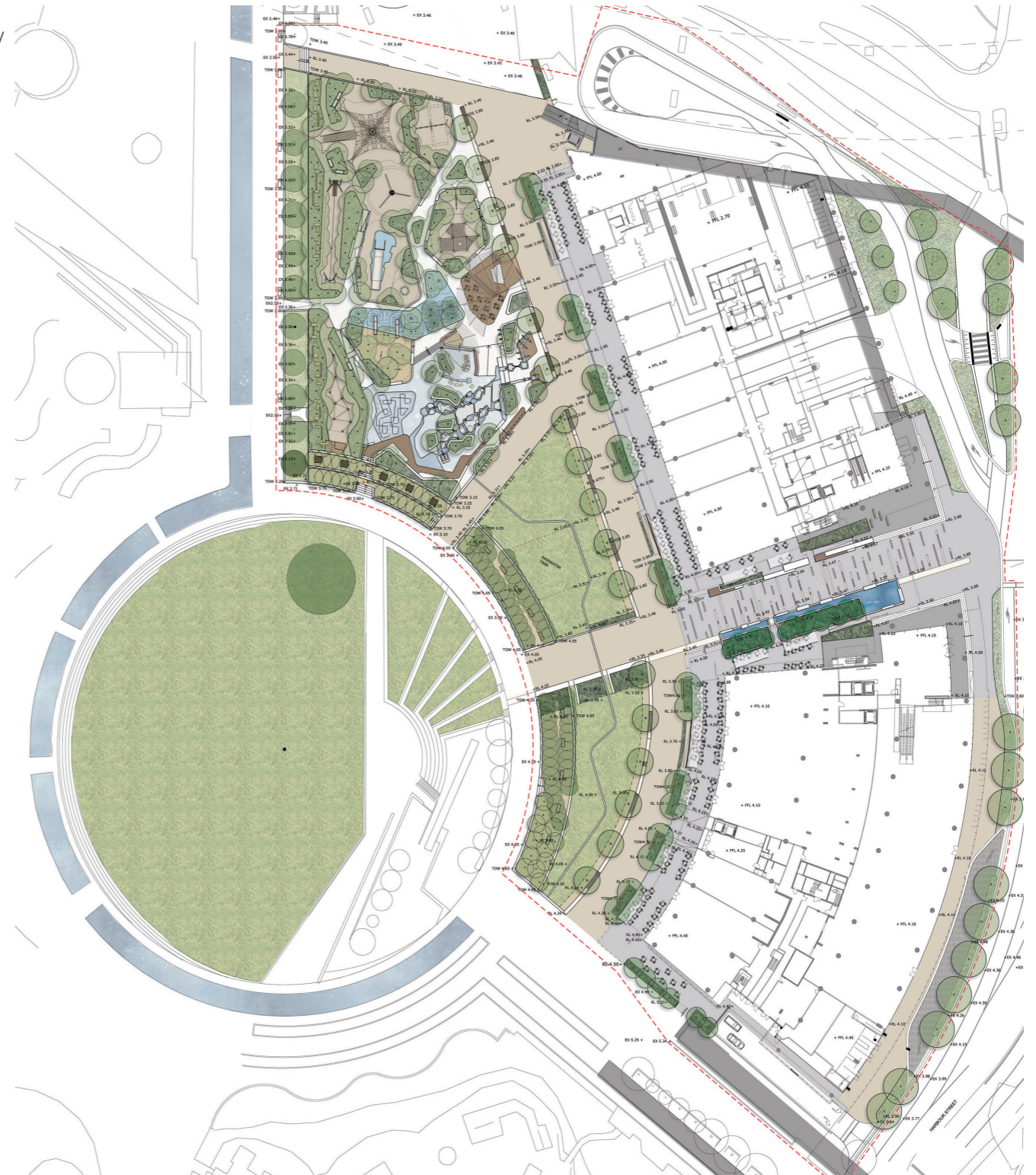
## 1.0

### Introduction

The Darling Walk Concept plan includes the public playground to the West of the site adjacent to the commercial buildings currently under construction.

This key public space will provide a variety of activity zones that are family focussed and include the playground, Children's Theatre and retail outlets. The increased population to the area from workers and recreational visitors will create animation and activity to the Darling Walk sector of the Darling Harbour precinct.

This report describes the design proposals for the kiosk, shade structures, and Bathurst Street footbridge within the public domain. The overall public domain design and drawings have been developed by ASPECT Studios Landscape Architects in collaboration with the Darling Walk design team. For detailed information refer to ASPECT Landscape drawings and Public Domain EA report.



Darling Walk Site Plan - Drawing Courtesy of ASPECT



## 2.0

### Concept

The design strategy for the Darling Walk public domain aims to create an environment that is permeable, unified and legible in comparison to the previous cluttered Sega-world site. A new at-grade pedestrian connection will link the Darling Walk precinct and Darling Harbour South to the City. New retail activity and public domain improvements (designed by ASPECT) will provide an appropriate setting for the commercial development.

The proposed kiosk and shade structures have been centrally located to create an entry zone and link element between the Children's Theatre and playground. The kiosk building will provide a small cafe, seating area and amenities for the park users and have an architectural language that is unique to the urban park setting.

The proposed shade structures will continue the language of the kiosk and provide shade to the primary toddler activity zones. The playground will be generously planted with trees to provide additional shade throughout.



Darling Walk Public Domain - 3D Image Courtesy of ARTERRA

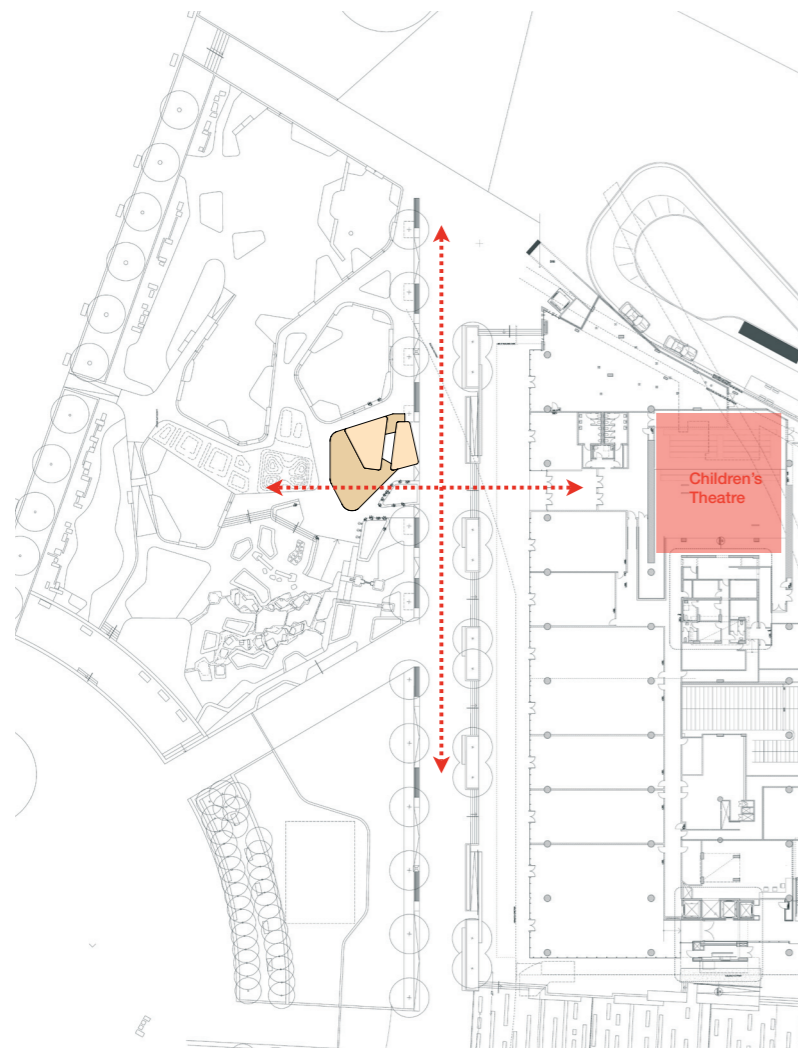
## 2.1

### Concept Principles

#### 2.1.1 Connections and Views

A primary principle of the proposed kiosk concept is to extend the entry corridor of the Children's Theatre. Located to the west of the main north-south pedestrian boulevard, the kiosk provides an entry marker to both the playground and the theatre.

The kiosk consists of two small buildings that separate the kiosk area from the amenities and plant room entry. These two sculptural forms sit as a pair, slightly angled away from the boulevard to establish interesting views from all angles. The organic form of the shade structures fan over the kiosk and seating area and lead pedestrians into the playground.

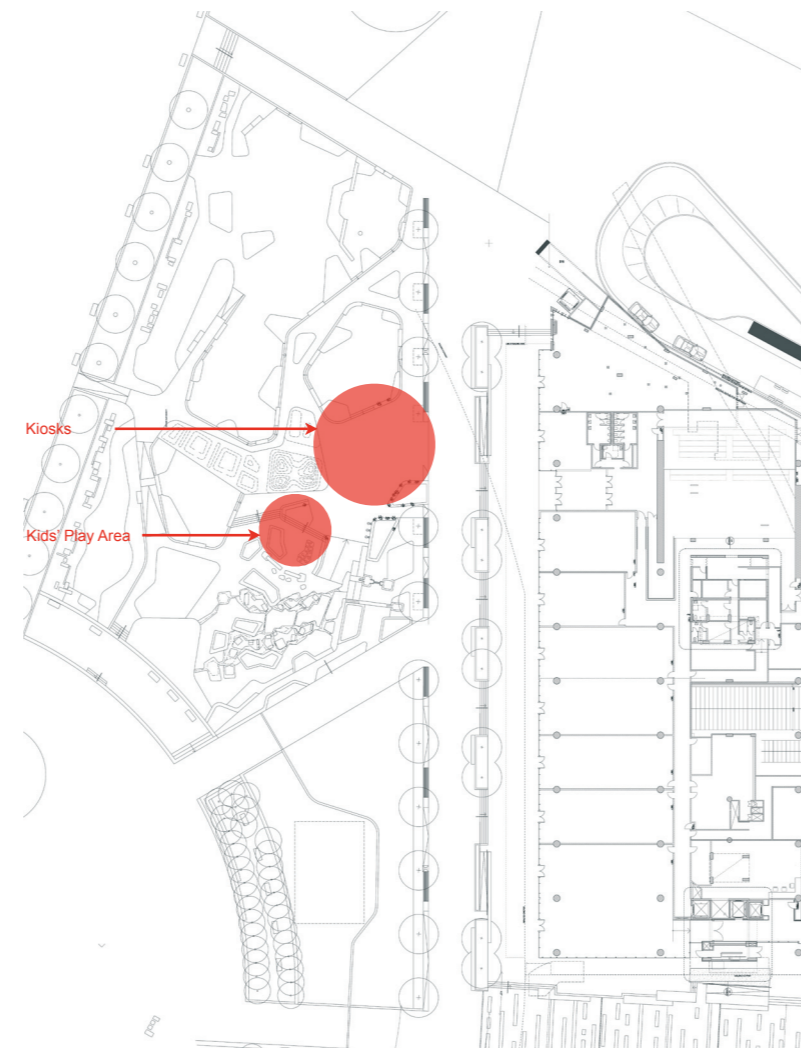


Site Plan & Kiosks Concept

#### 2.1.2 Shading Zones

Darling Walk public domain redevelopment will be characterised by significant tree planting and the innovative canopy structures proposed to provide shade to its site.

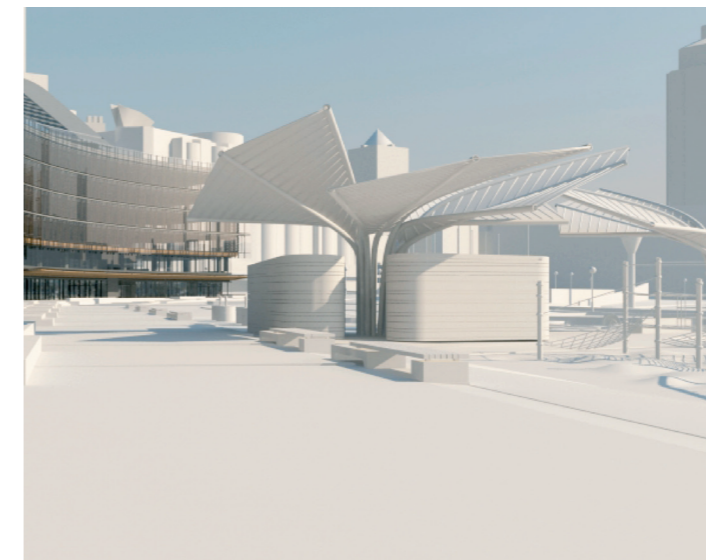
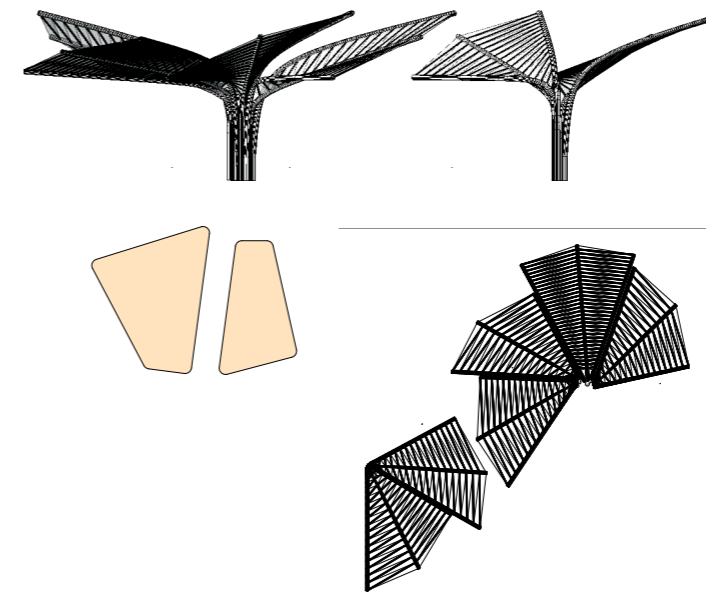
The majority of the playground will be shaded through planting. The built shade structures will provide shade to critical zones of the playground that include the kiosk seating area and the toddler sandpit and water play zone.



Site Plan & Shading Zones

#### 2.1.3 Form and Massing

The architectural forms of the kiosk and shade structures have been inspired by the geometries of the proposed public domain landscape design by ASPECT and the organic form of the leaf. The primary component parts are a flush timber seating deck, two small buildings that accommodate retail and amenities, shading canopies and a plant room for the water play area below ground that is accessed via the amenities building.



Form and Massing

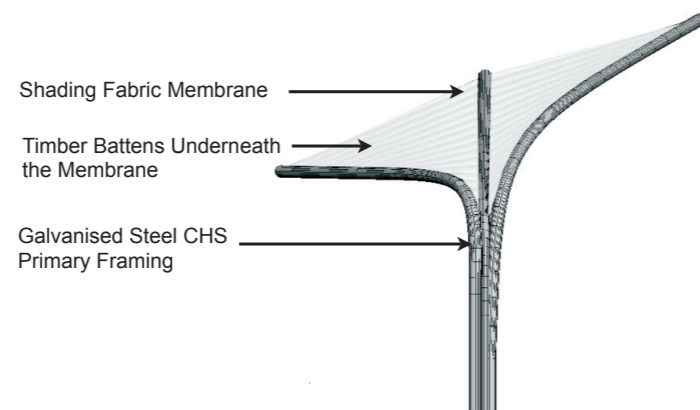
## 2.2

### Design Principles

#### 2.2.1 Materials and Colours

The proposed shade structures and kiosk have been designed using the material palette used in the proposed public domain design by ASPECT to ensure a unified design throughout the Darling Walk precinct. Materials include: timber, galvanised steel/ Aluminium and Concrete finish to floors.

Using a similar language, the materials/ colours will be compatible with those of the new Darling Walk redevelopment creating a harmonious relationship of elements within the precinct.



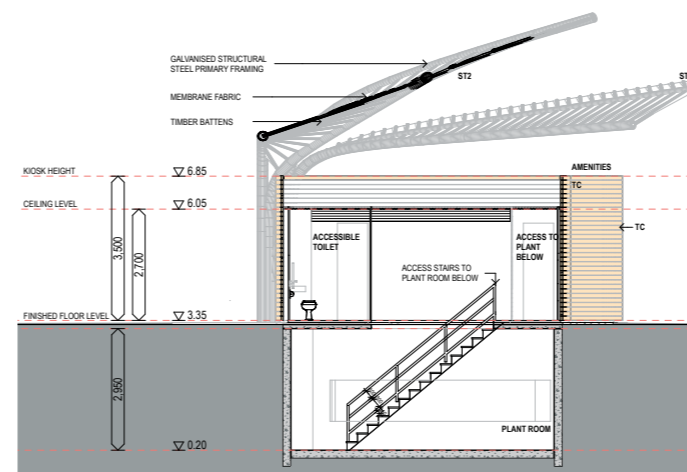
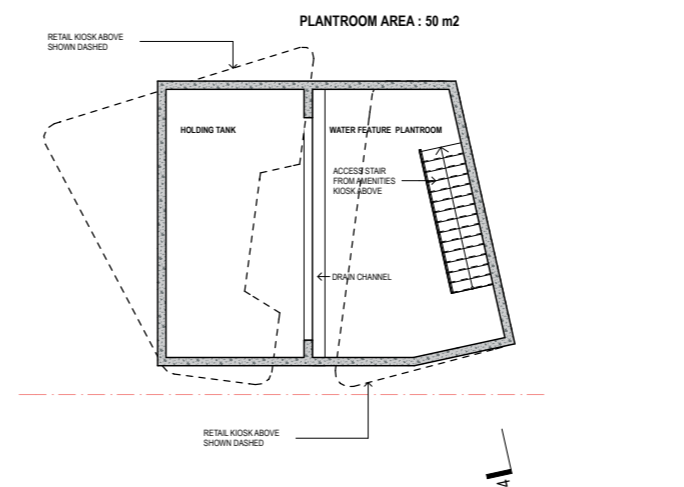
Materials & Colours - Image Courtesy of ARTERRA

#### 2.2.2 Access to Play Area Plant Room

A Plant Room accommodating a water holding tank and required mechanical equipment is located underground below the proposed kiosks.

Water for children's water play areas will be filtered and reticulated from this plant room and supplied from the rainwater tank located below the village green.

Access to the plant room is provided via a 1m wide stair from the amenities kiosk above. Refer to the Plan/ Section below.



Water Play Area Plant Room Plan & Section

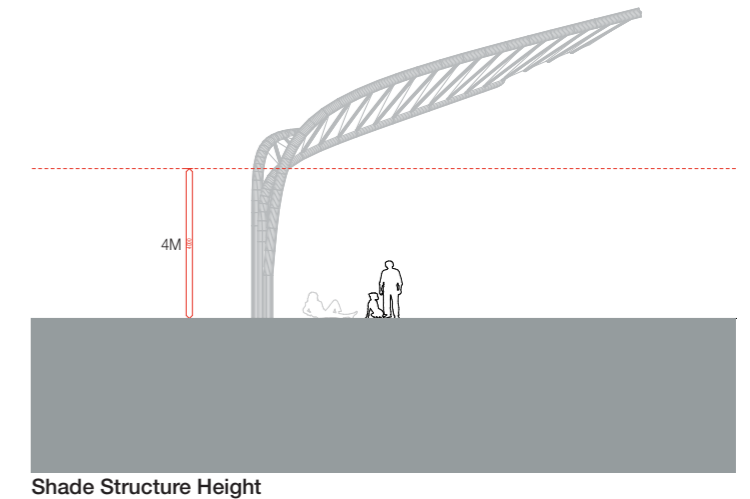
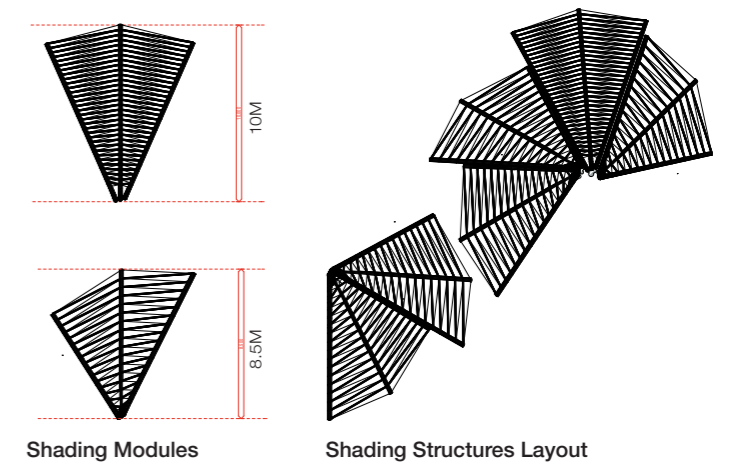
#### 2.2.3 Safety and Heights

The shade structures and kiosk have been designed with safety for occupants and the public in mind.

The coupled kiosk buildings on the ground plane ensure there are no concealed or visually obscured spaces in which undesirables can loiter. The entrance to the amenities corridor will be closed off via two after hour gates. The kiosk will not operate after hours.

Curves to both kiosk and shade structure forms provide rounded, non-climbable structures. The canopies have been angled to provide maximum shade protection.

The proposal is being designed in accordance with the Building Code of Australia.





Kiosks 3D Rendered View from North - Image Courtesy of ARTERRA

### 3.0 Design

The designs of the shade structure and kiosk have been driven by functional requirements such as improving pedestrian connections in the public domain. Connectivity, pedestrian amenity and community safety are paramount considerations that have informed the aesthetic realization of the kiosk and shading elements.



Kiosks & Shade Structures 3D Rendered View from Kids Play Area - Image Courtesy of ARTERRA

### 3.1 Shade Structures

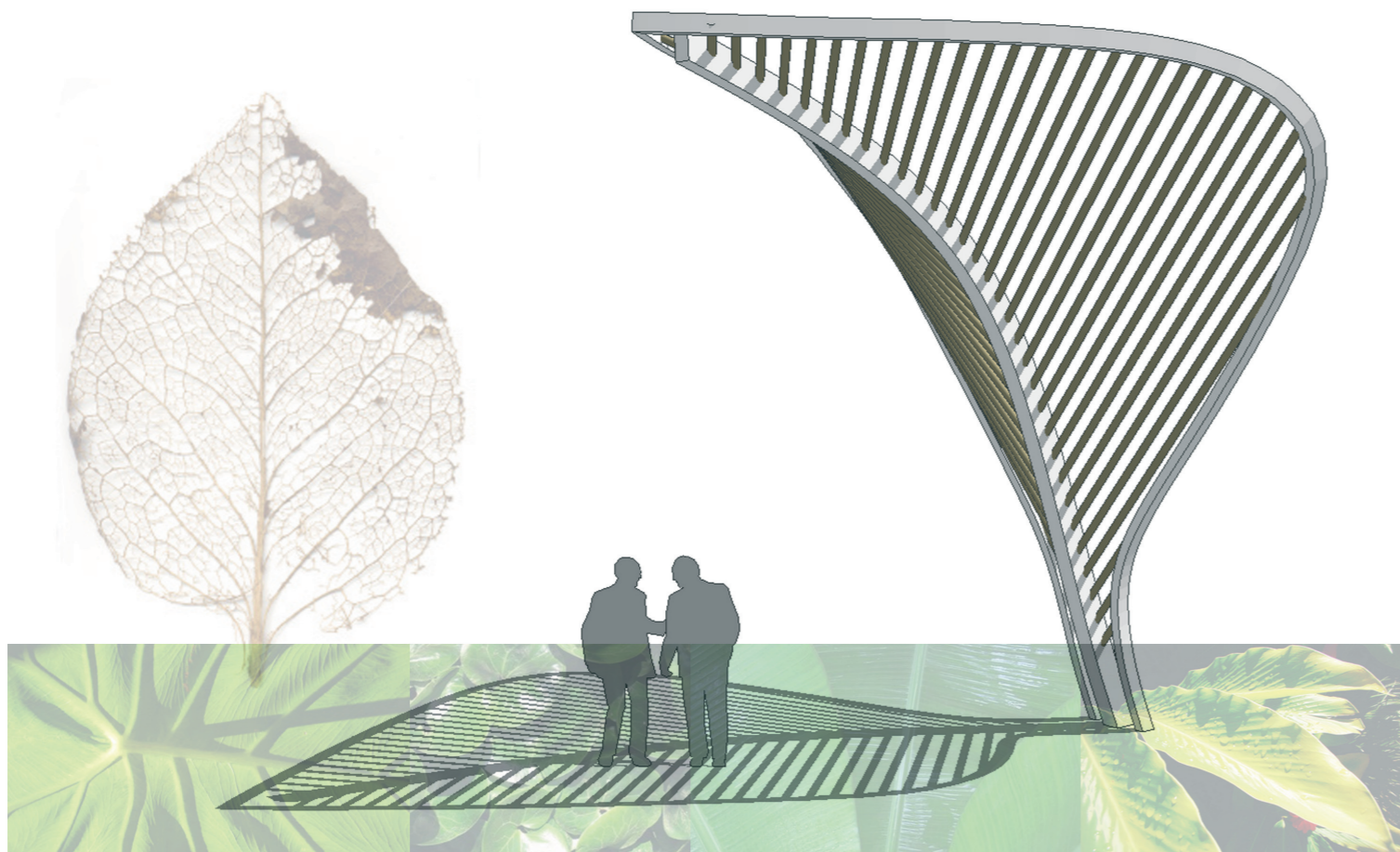
#### 3.1.1 Shade Structure Form and Material

The shade structures are essential components of the Darling Walk public domain redevelopment.

While providing shade over the seating area of the kiosk and the toddler sand pit and water play area, the shade structures create an interesting feature to the public domain.

Having evolved from the leaf form, the structure of the shading canopies are light, non obstructive and efficient.

With their forms and materials in-line with the palette of the Darling Walk public domain redevelopment, the shade structures contribute to the visual character of the public domain.



Shade Structures Concept Development



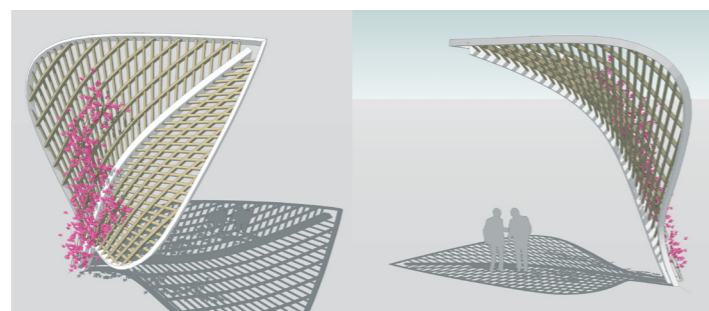
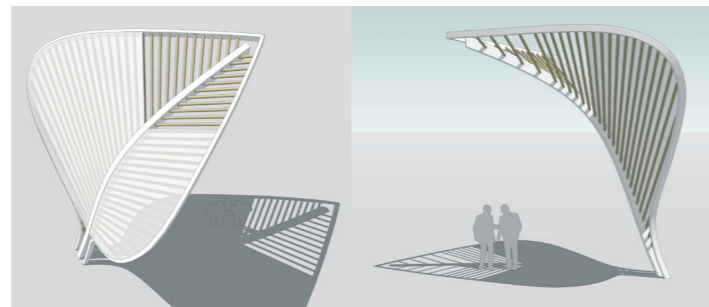
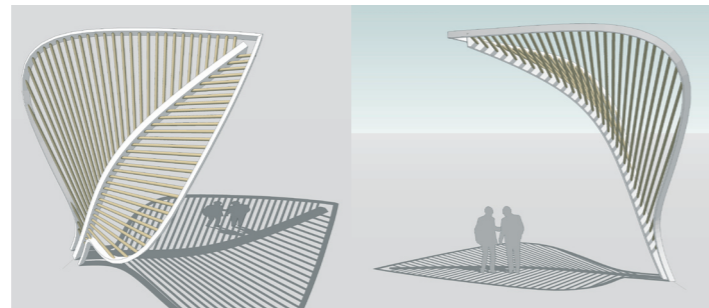
Reference Images

### 3.1.2 Shade Structure and Shading Studies

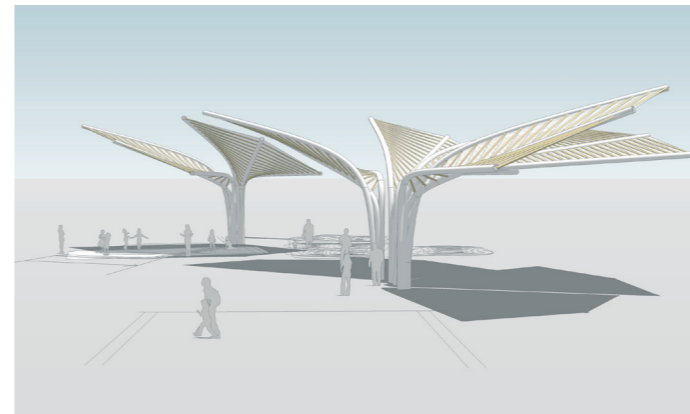
Comprehensive shade studies have been carried out to study the optimum form of the canopies.

Diagrams below show the concept development of the canopy forms (below left) and shade study diagrams at 4 critical times of the year, Winter/ Summer Equinox and Solstice (below right).

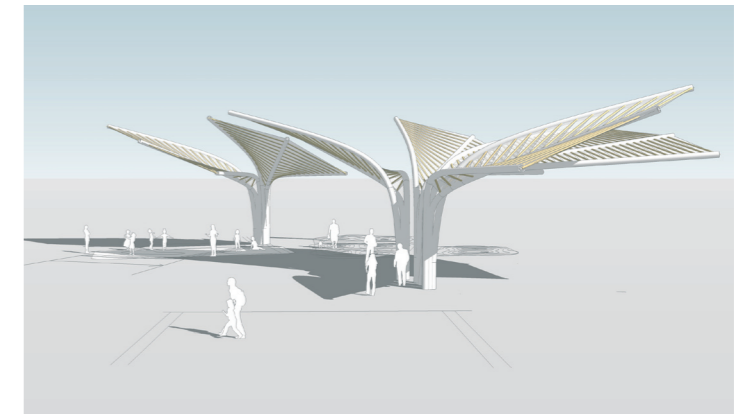
Shade Structure proposed form and layout (below right), respond best to the shading requirements of the areas all year round.



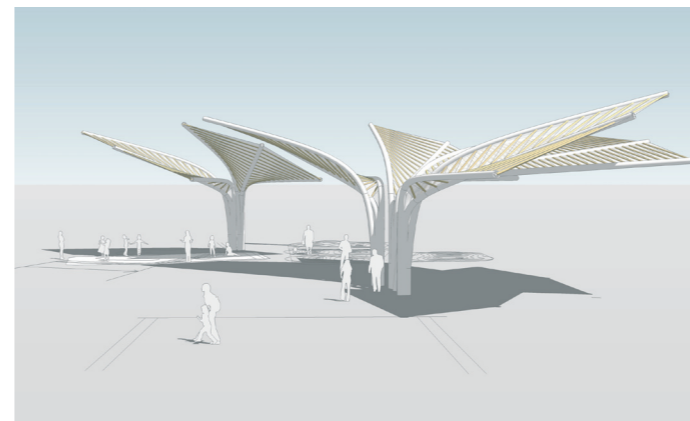
Shade Structure Concept Development



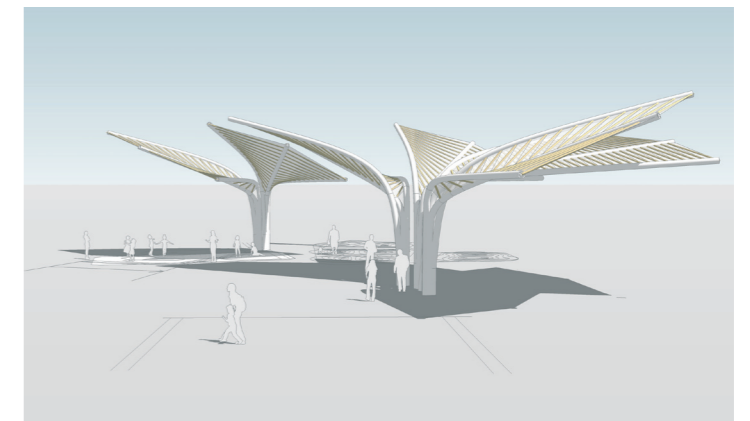
December Solstice



June Solstice



March Equinox



September Equinox

### 3.2 Kiosks

#### 3.2.1 Kiosks Form and Material

The retail and amenities kiosk is a vital component of the Darling Walk public domain redevelopment.

The two parts of the kiosk sit as a pair creating a corridor in between for amenities access. While providing cafe type retail service and amenities to the public, the amenities kiosk accommodates access to the water play plant room below. Their subtle form with curved corners follow the forms of the proposed landscape features harmonising with the public domain.

Blending into the public domain landscape, timber cladding to the kiosks are light, legible and efficient.



View from Promenade North & South - Images Courtesy of ARTERRA

Amenities & Retail Kiosks Detail Plan

Reference Images

### 3.2.2 Retail Kiosk

The retail component of the kiosk sits on a timber deck in close proximity to the children's sand pit and water play area, providing an observation zone for parents.

The triangular shape for the retail kiosk efficiently accommodates front of house, back of house and food preparation area. With its long open frontage, the retail kiosk provides practical customer service area.

With its 30sqm NLA, the retail kiosk has sufficient space to store outdoor seating tables and chairs after hours.

### 3.2.3 Amenities Kiosk

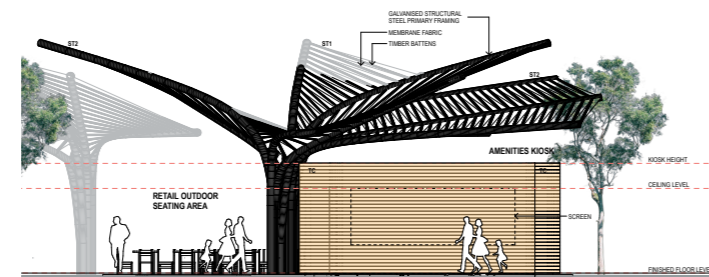
The amenities element of the kiosk is slightly angled off the pedestrian boulevard and efficiently accommodates a male, female and accessible toilet, storage and access to the plant room below. Access to the amenities is via the amenities corridor.

On its Eastern frontage, along the pedestrian boulevard and opposite the Children's Theatre entry, an information screen has been proposed to provide information to the public.

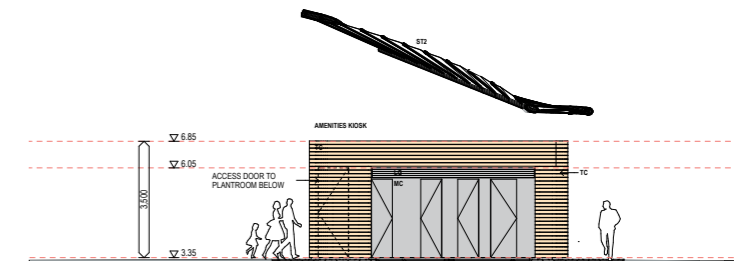
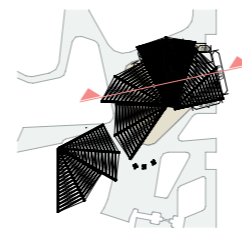
### 3.2.4 Amenities corridor and Wash Basins

A 1.5m wide corridor is formed within the space between the two elements of the kiosk accommodating access to the amenities on one side (East) and washbasins recessed area on the other side (West).

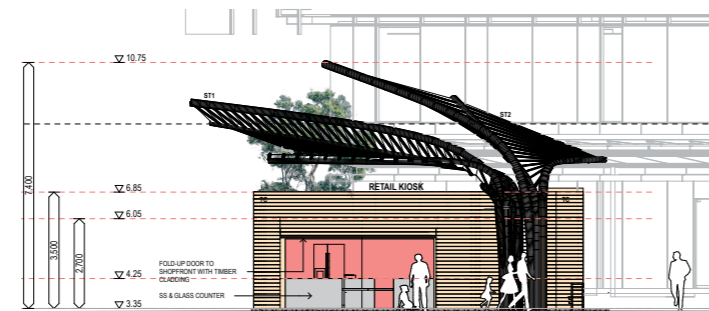
Two gates will close off the corridor after hours.



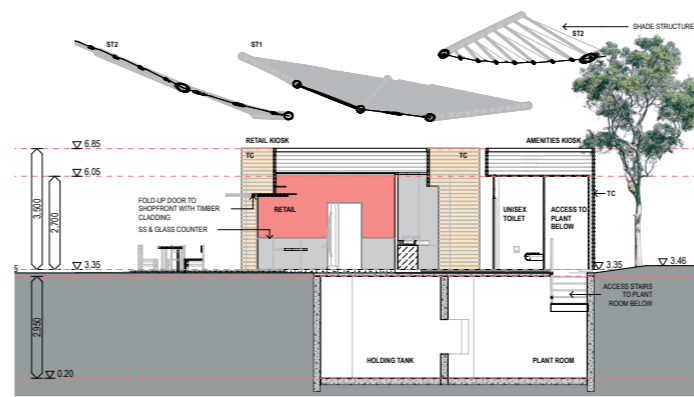
Amenities Kiosk East Elevation



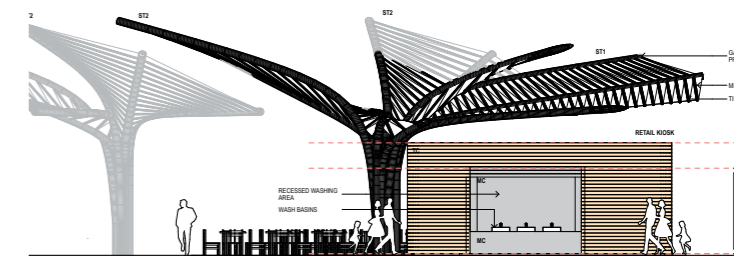
Amenities Corridor East Elevation



Retail Kiosk Elevation



Cross Section through Kiosks



Amenities Corridor West Elevation

### 3.3

## Bathurst Street Footbridge Concept Principles

### 3.3.1 Connections and Views

The proposed Bathurst Street Footbridge augmentation and partial realignment is designed to promote pedestrian connections between the City and Tumbalong Park by providing pedestrians with a safe and exciting means of traversing Harbour Street.

The design promotes safety by maintaining clear sight lines along the length of travel. Furthermore, awnings are orientated to open towards major public spaces adjacent to the bridge in order to further promote visibility.

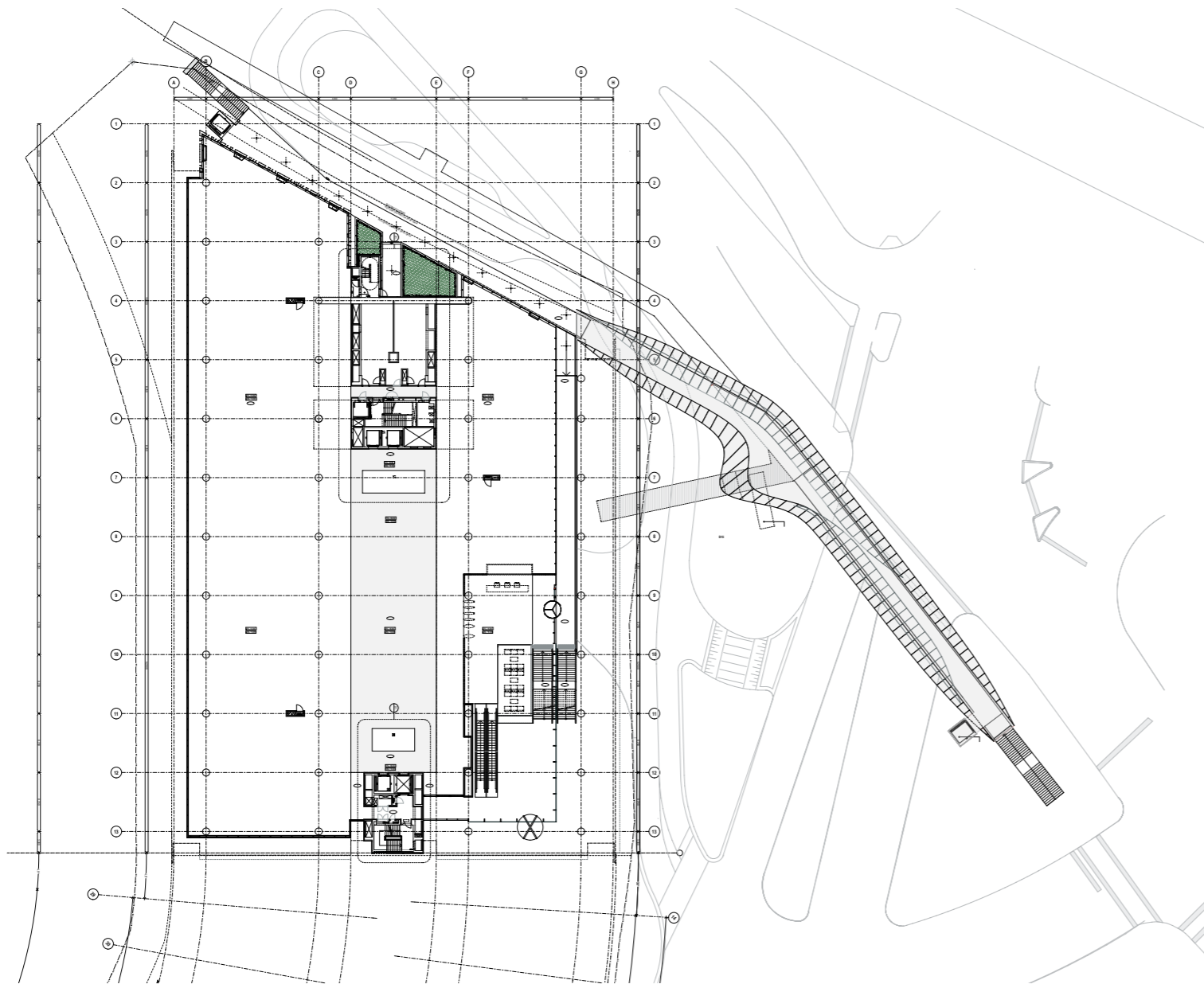
### 3.3.2 Accessibility and Weather Protection

The proposed design promotes accessibility by the inclusion of a new public elevator at the Tumbalong Park end of the bridge.

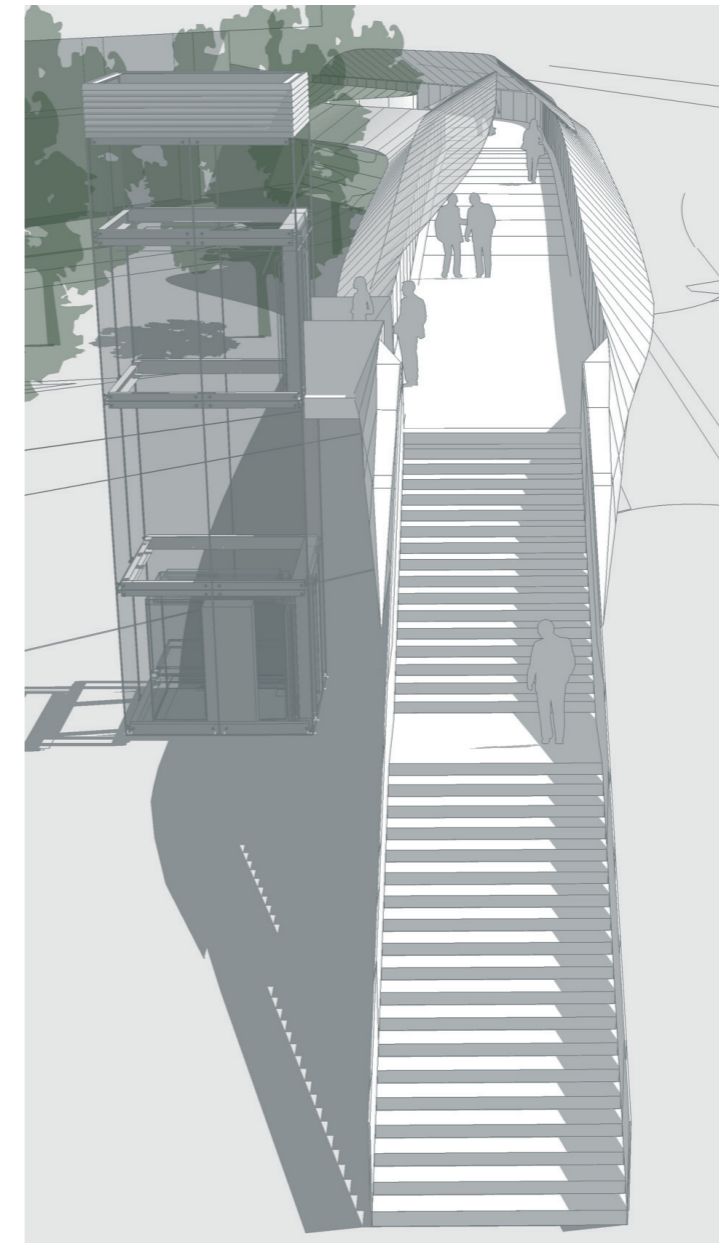
The design features an awning roof system which provides weather protection for majority of the bridge's span over Harbour Street.

### 3.3.4 Form, Massing and Materials

The proposed Footbridge augmentation will feature an elegant, sinuous form which will complement the architectural language of the Darling Walk Development. Furthermore, the proposed bridge design will utilise materials that are a central feature of the adjacent development and in doing so will lend the appearance of being a completely integrated development.



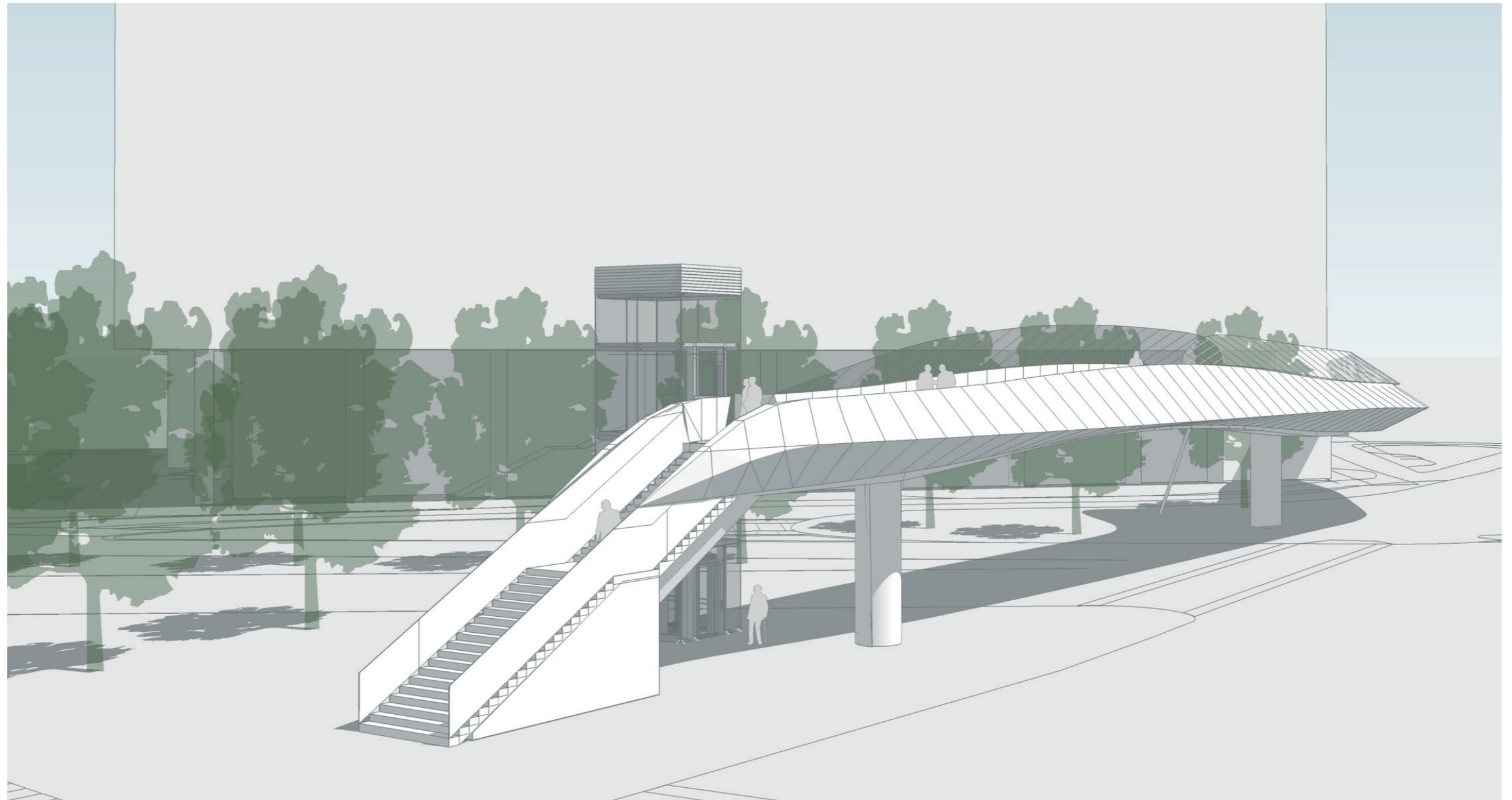
Site Plan



Approach from Bathurst Street (East)

3.4

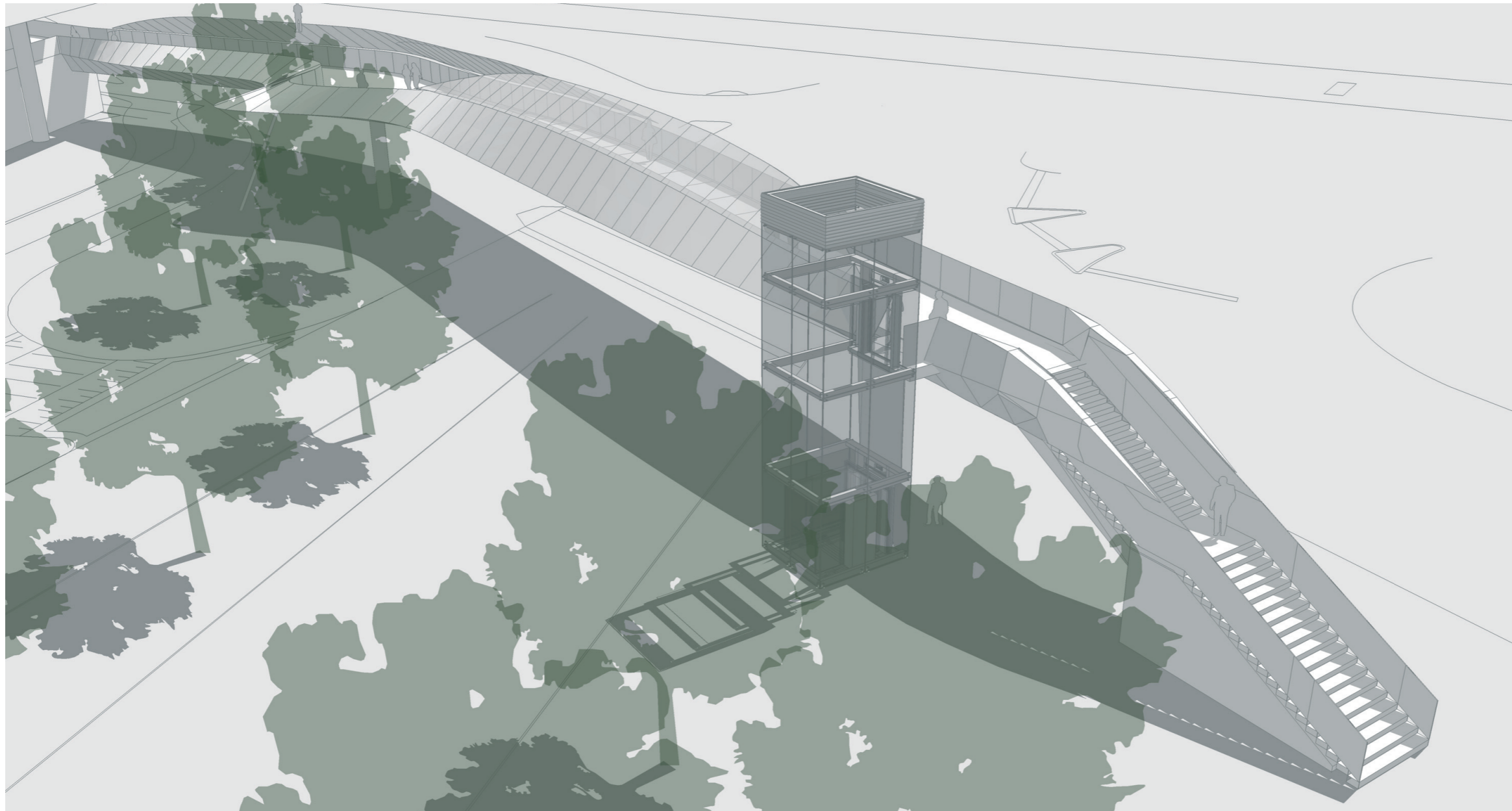
Bathurst Street Footbridge - Project Views



View from Bathurst Street (East)

3.4

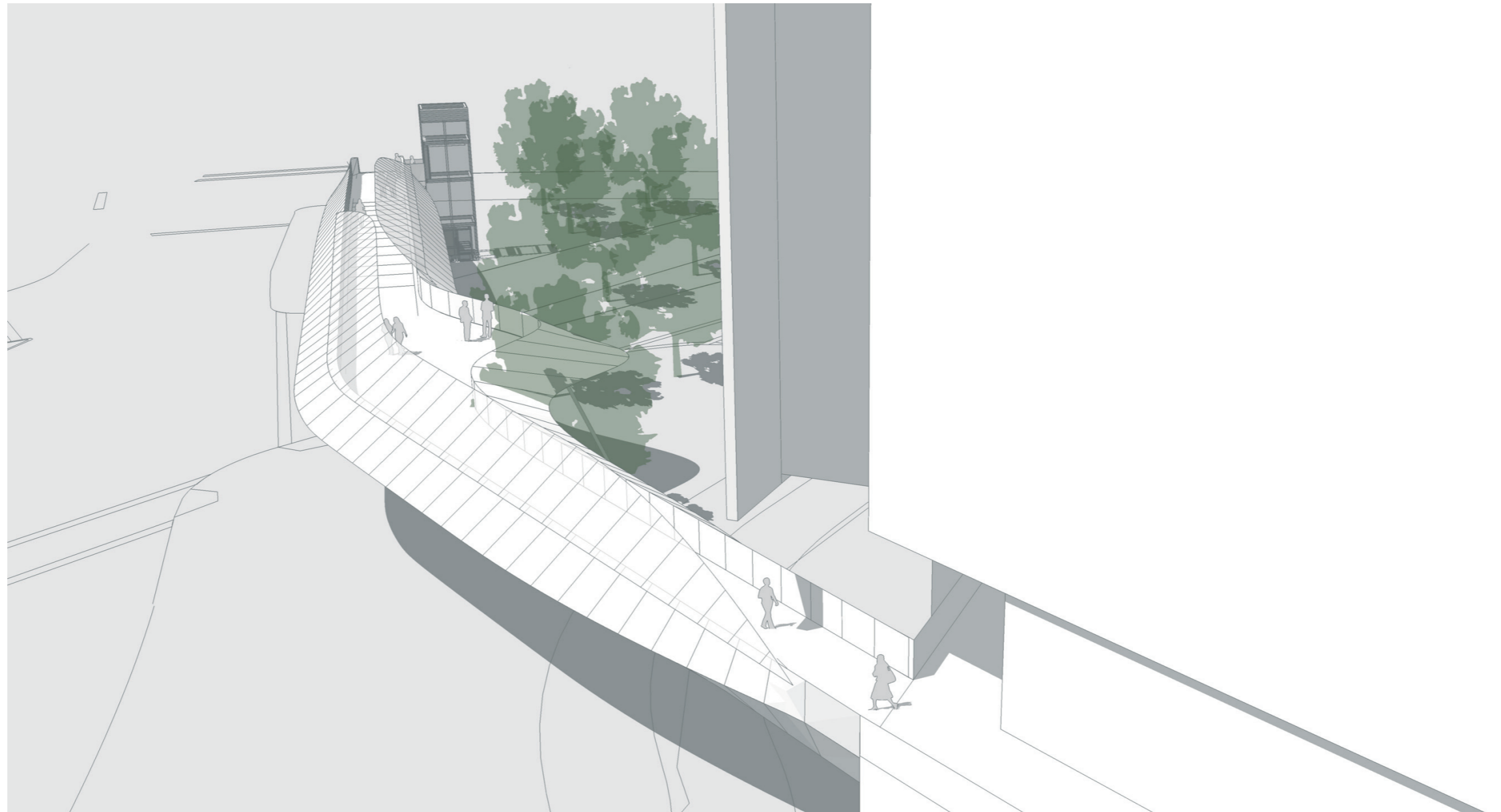
Bathurst Street Footbridge - Project Views



Aerial View Above Harbour Street

3.4

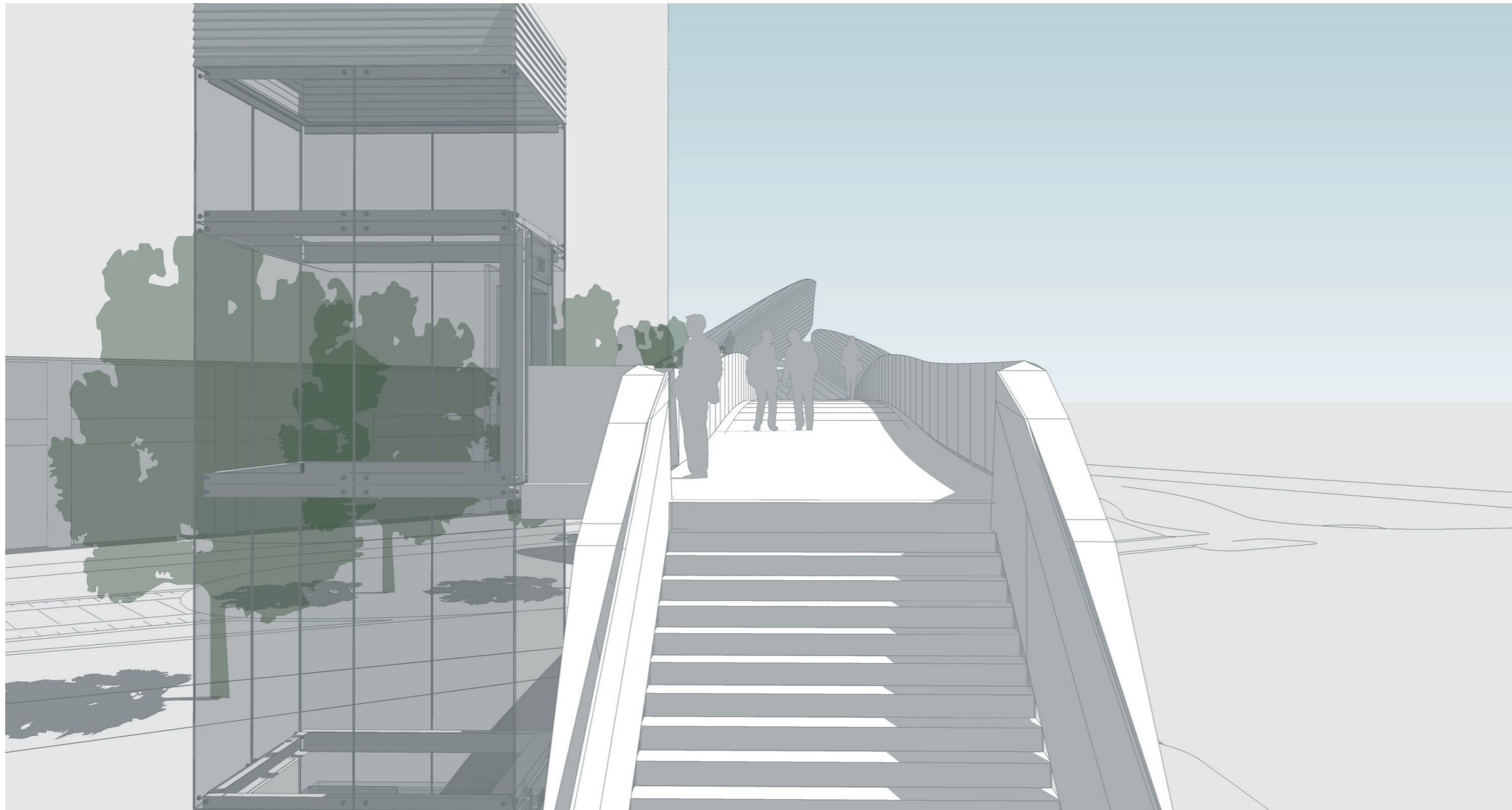
Bathurst Street Footbridge - Project Views



View of Connection to Darling Walk Development

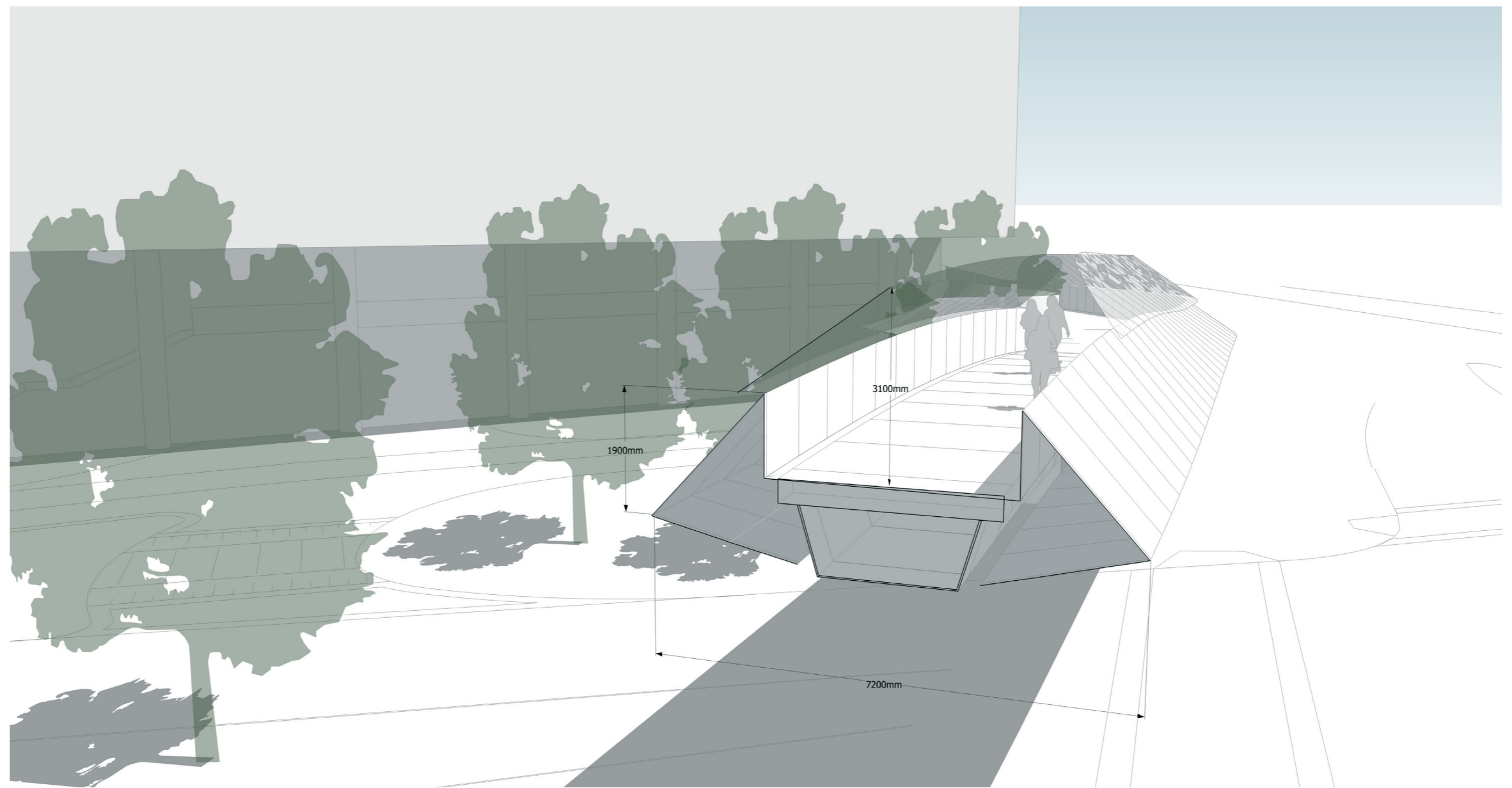
3.4

Bathurst Street Footbridge - Project Views



Approach from Bathurst Street (East)

3.4  
Bathurst Street Footbridge - Project Views



Sectional Perspective of Bridge Structure

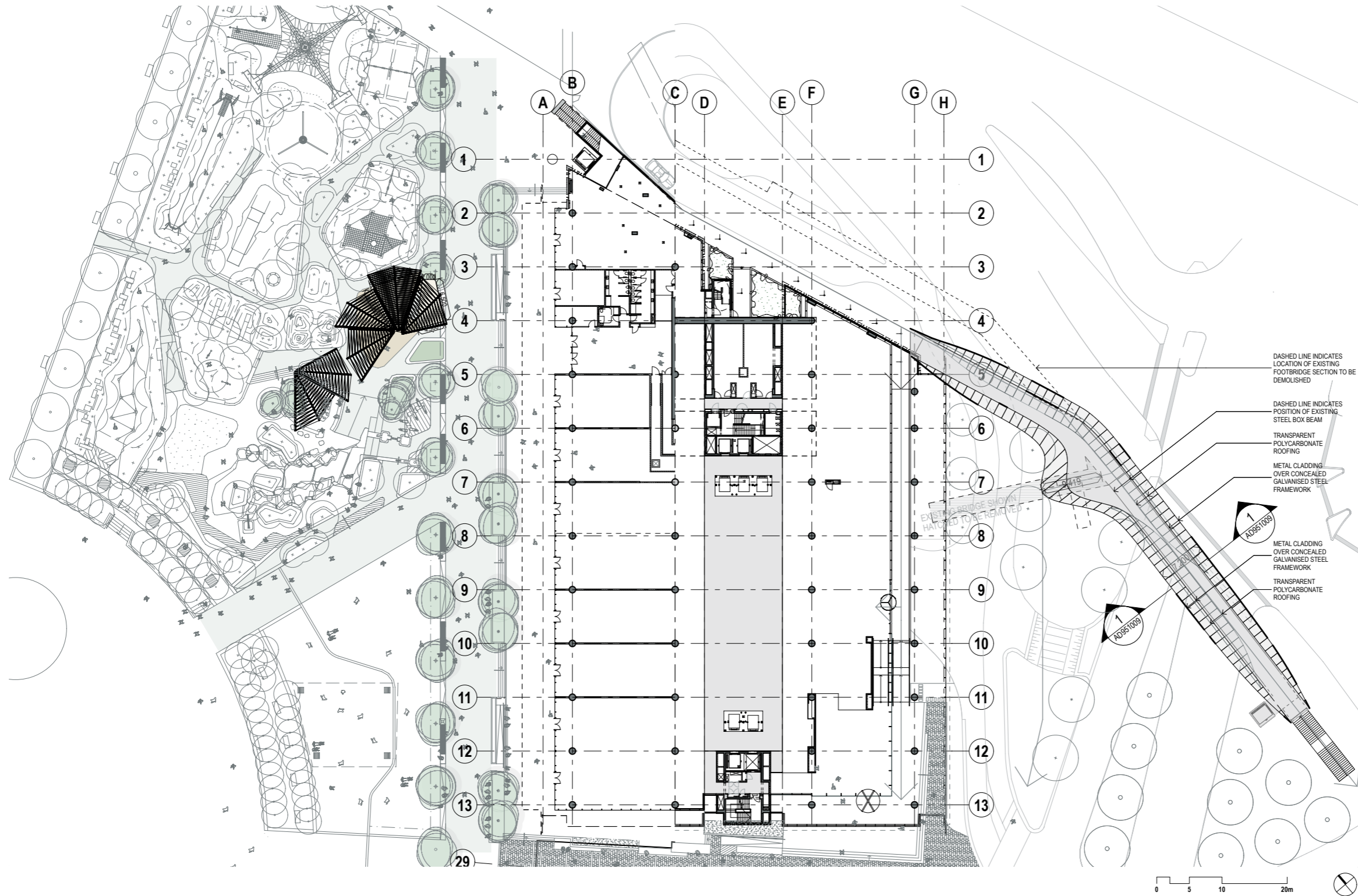


## 4.0

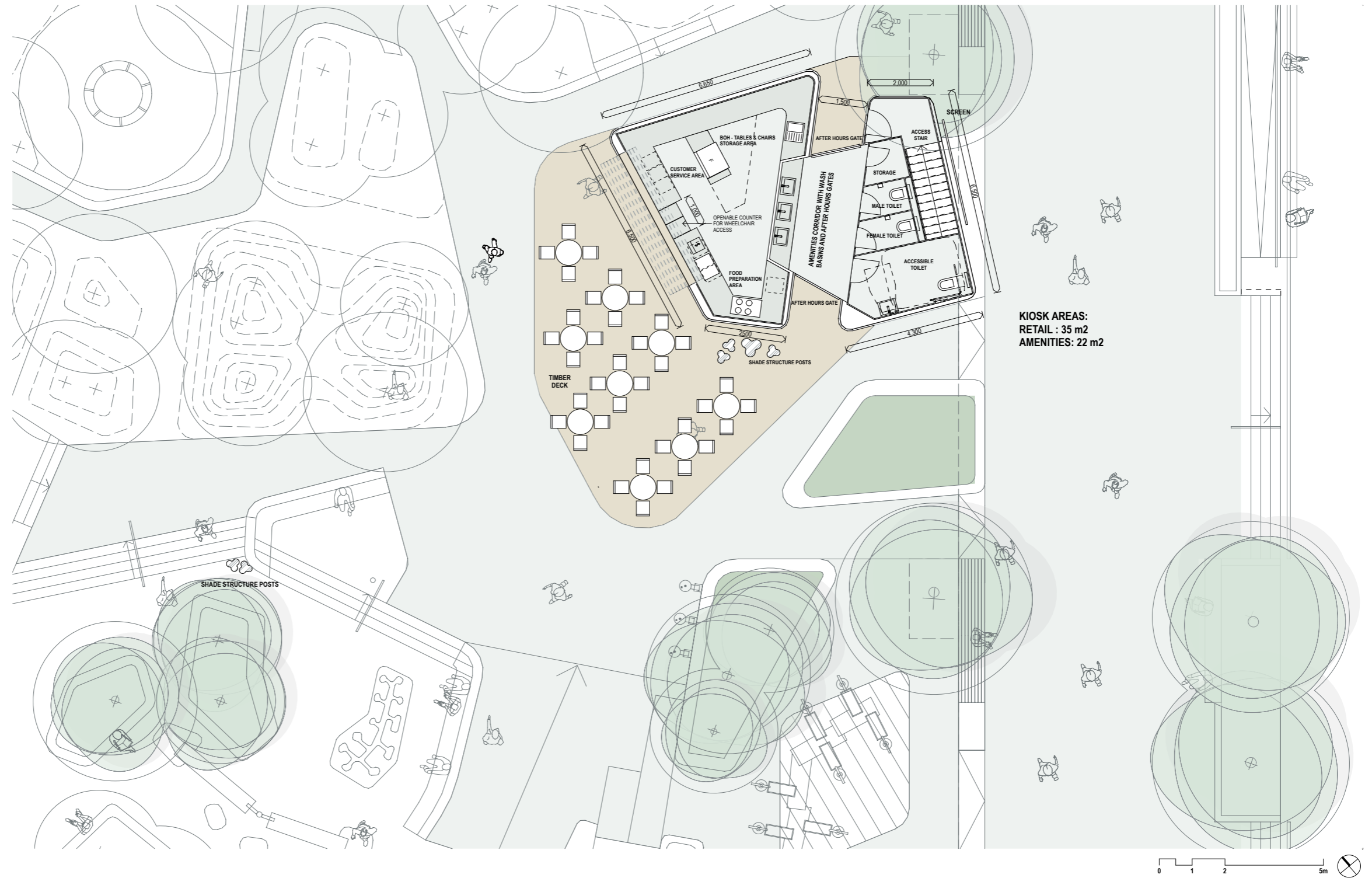
### Architectural Drawings

- 4.1 Site Plan
- 4.2 Amenities & Retail Kiosks Floor Plan
- 4.3 Shade Structures Plan
- 4.4 Shade Structures & Kiosks South Elevation
- 4.5 Retail Kiosk West Elevation
- 4.6 Retail Kiosk East Elevation
- 4.7 Amenities Kiosk West Elevation
- 4.8 Amenities Kiosk East Elevation
- 4.9 Bathurst Street Footbridge North Elevation
- 4.95 Bathurst Street Footbridge Section

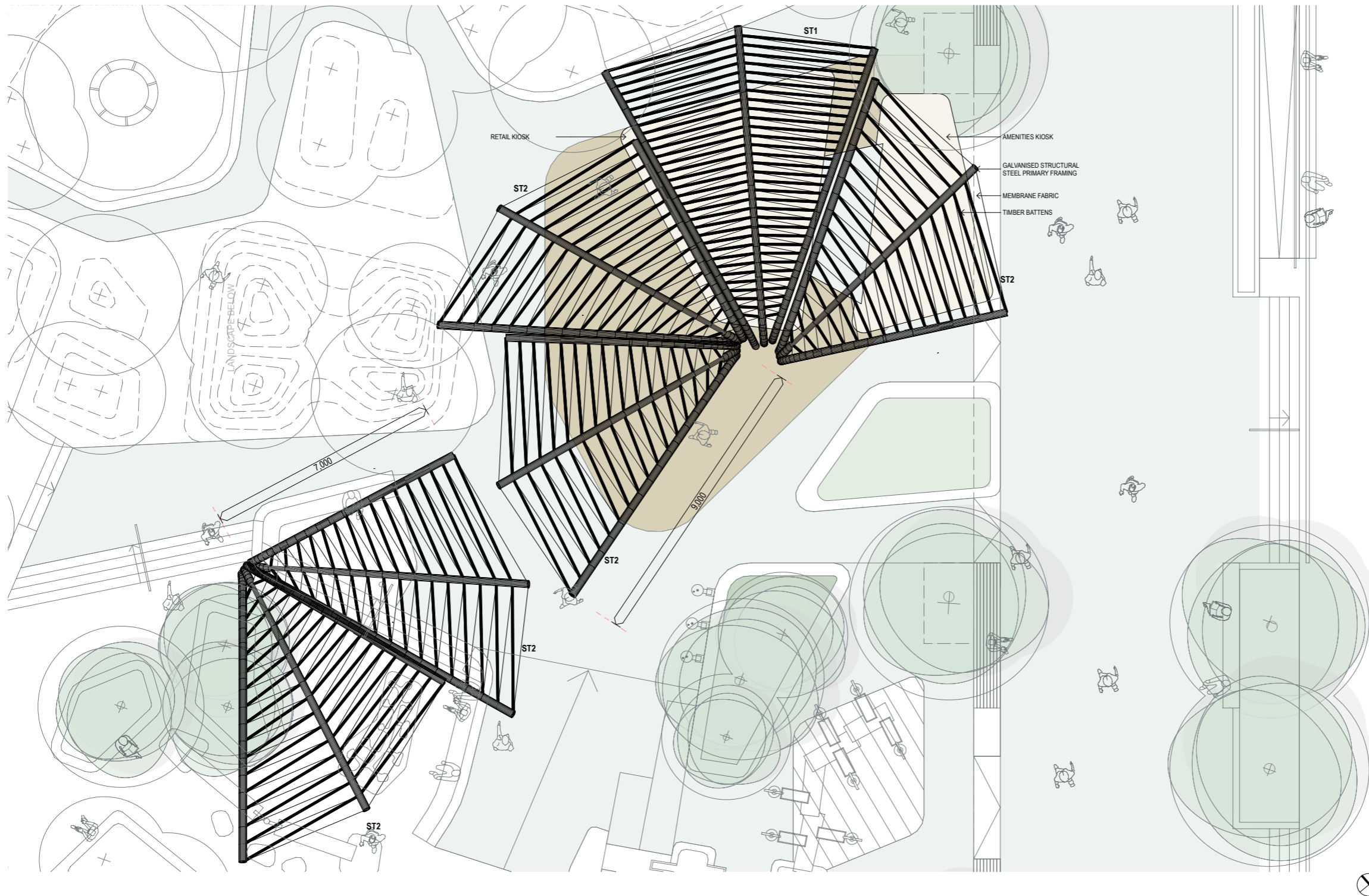
### 4.1 Site Plan



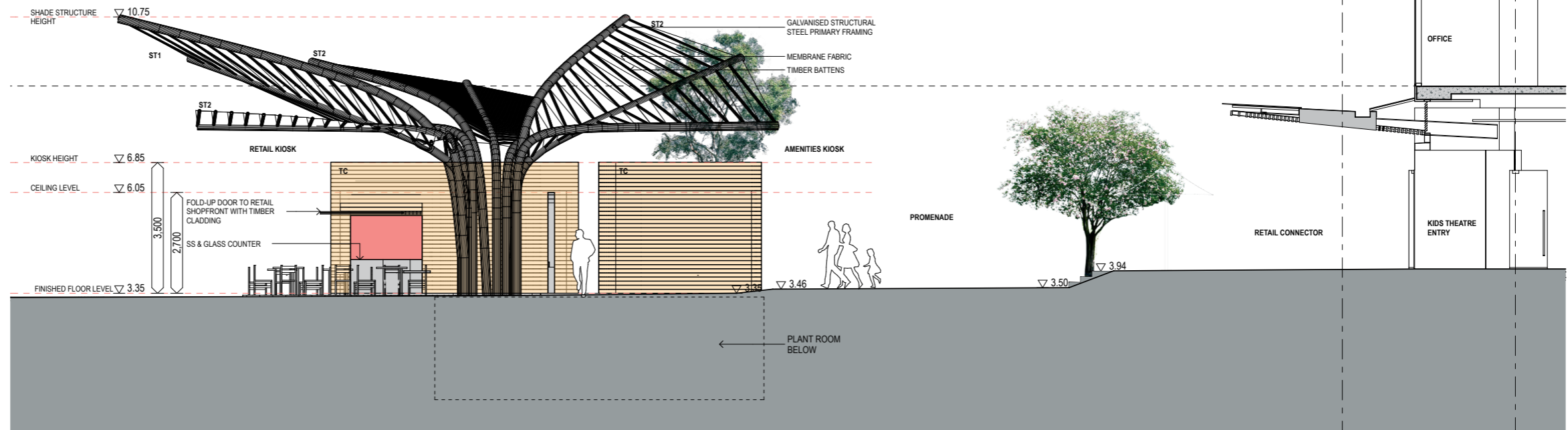
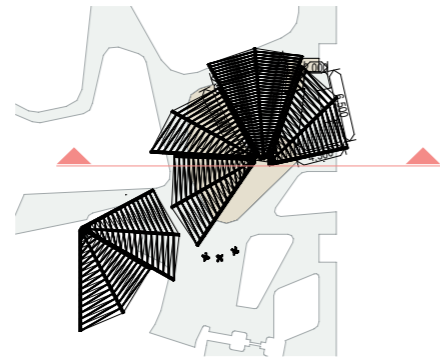
**4.2 Amenities & Retail Kiosks Floor Plan**



### 4.3 Shade Structures Plan



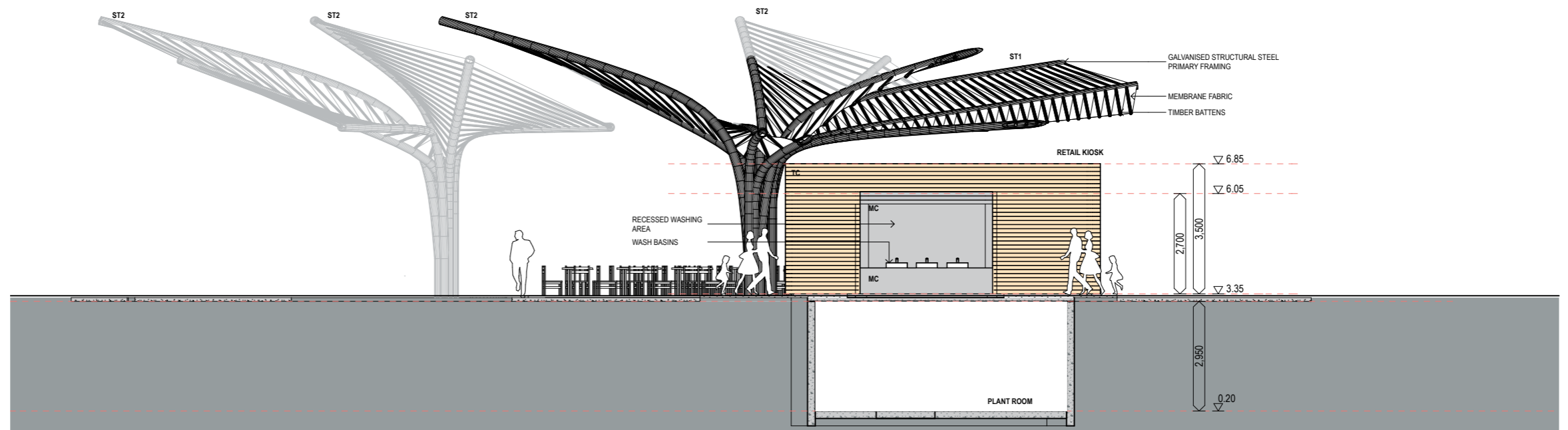
**4.4 Shade Structure & Kiosks South Elevation**



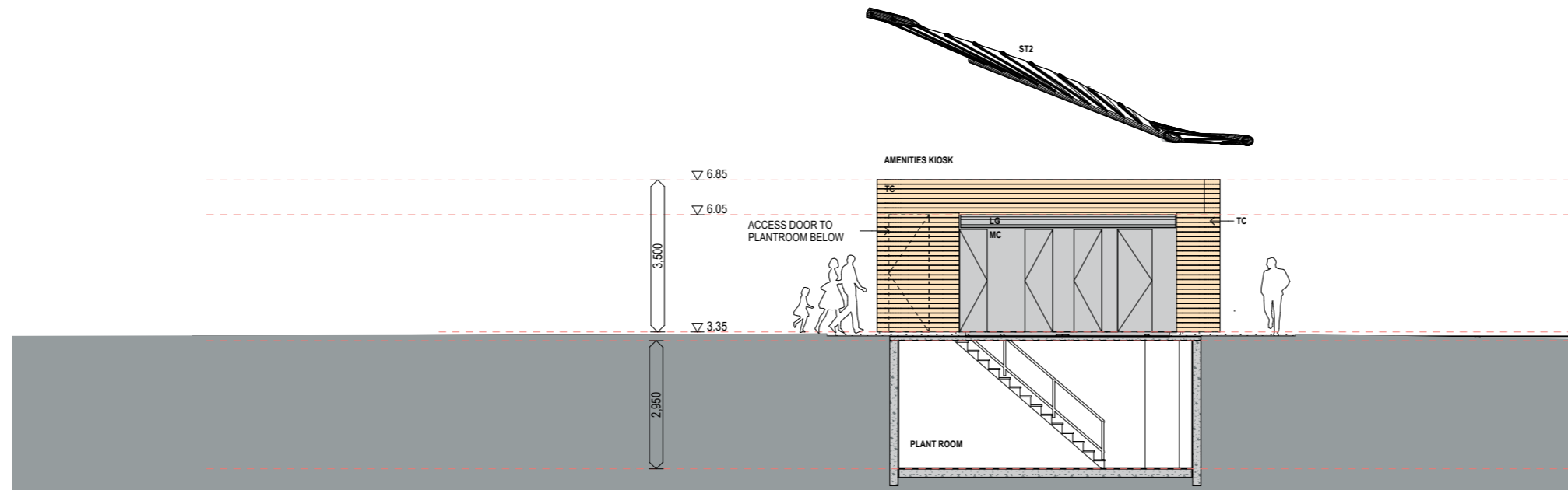
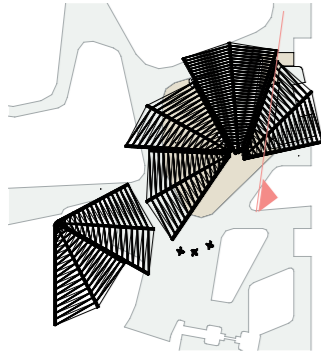
### 4.5 Retail Kiosk West Elevation



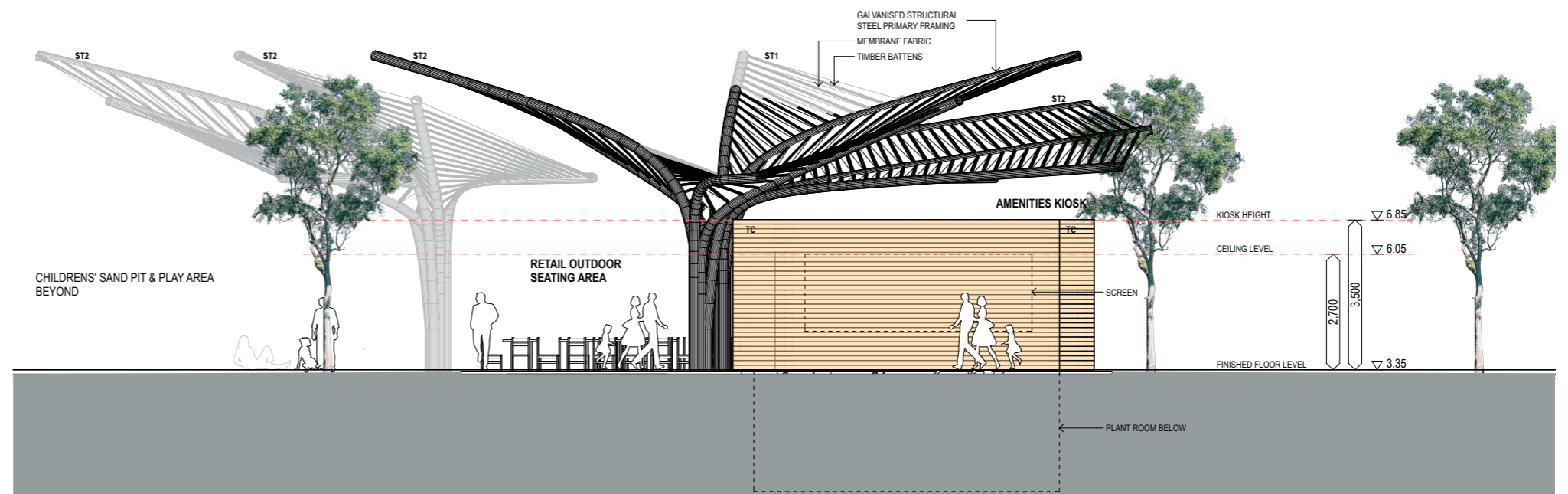
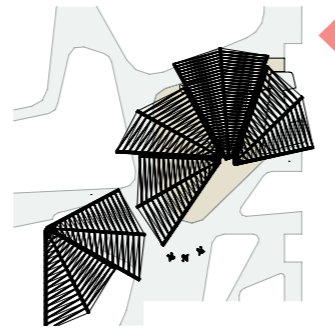
**4.6 Retail Kiosk East Elevation**



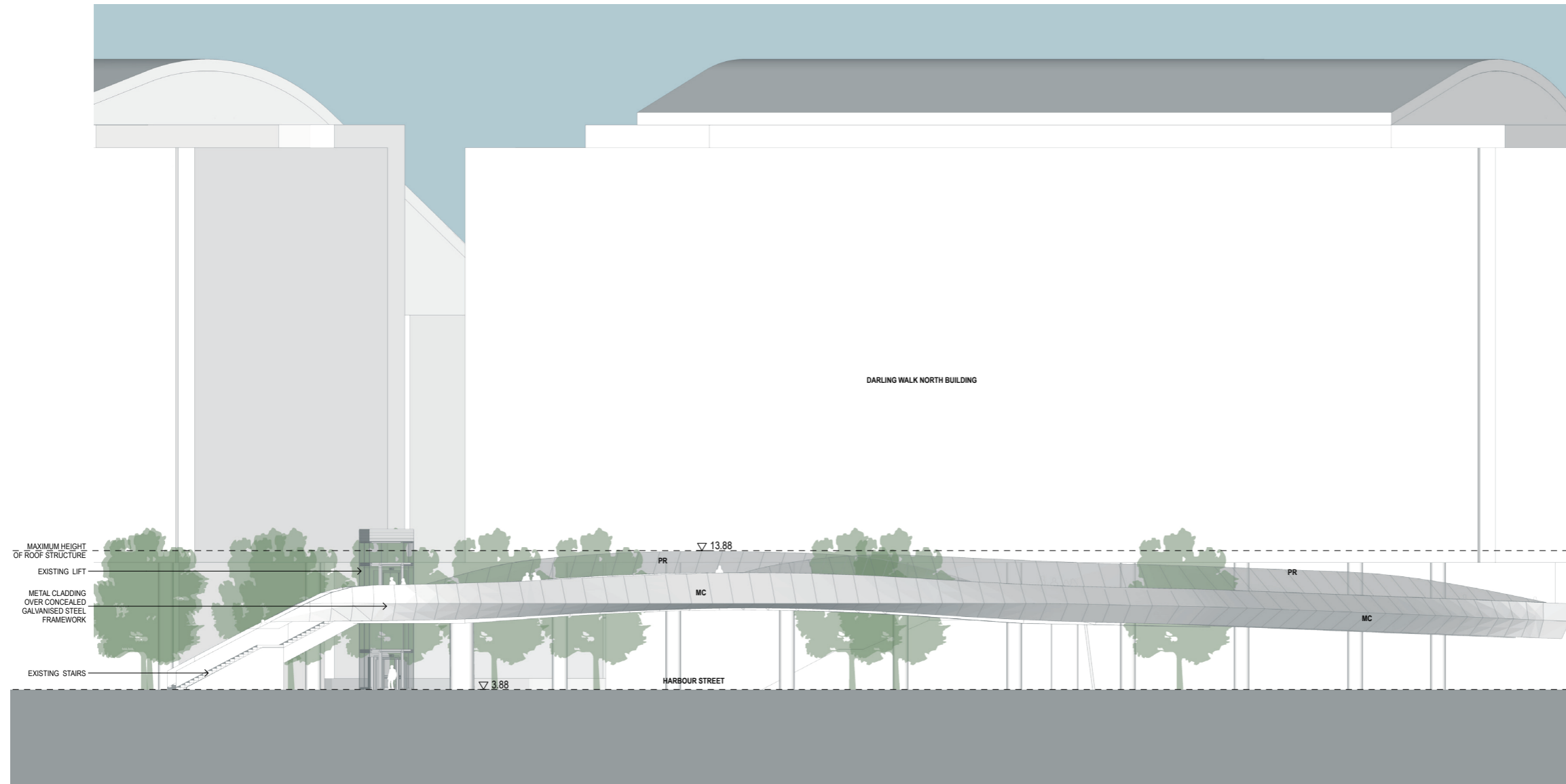
### 4.7 Amenities Kiosk West Elevation



**4.8 Amenities Kiosk East Elevation**



#### 4.9 Bathurst Street Footbridge - North Elevation



**4.95 Bathurst Street Footbridge - Typical Section**

