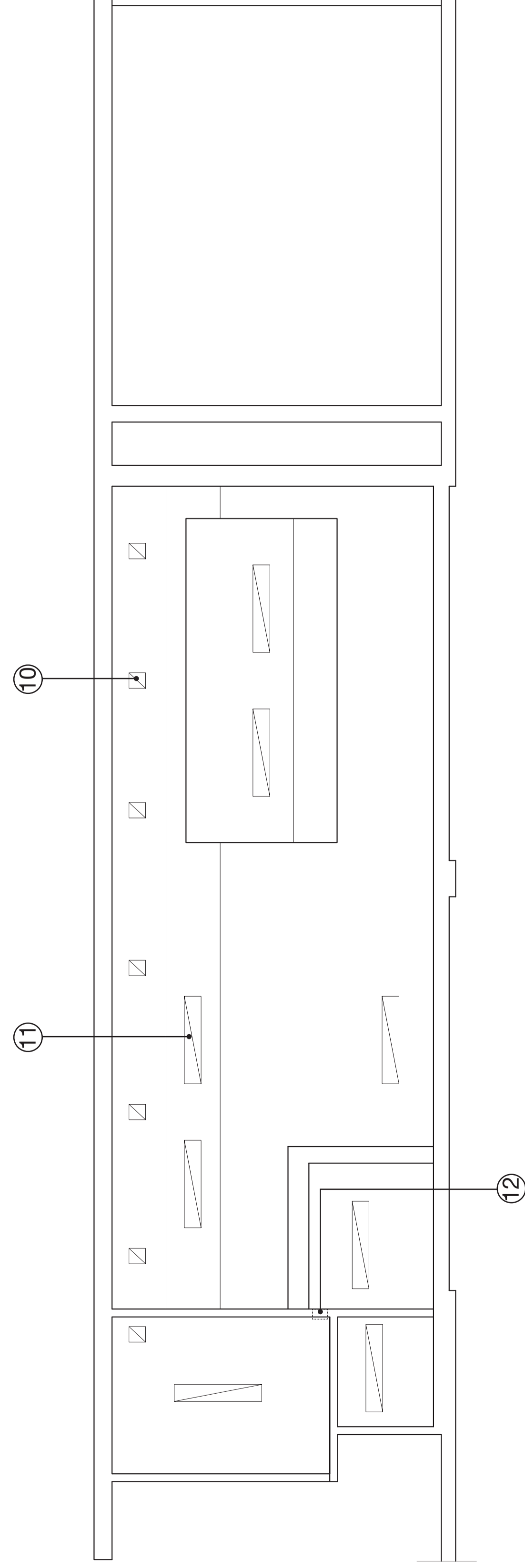
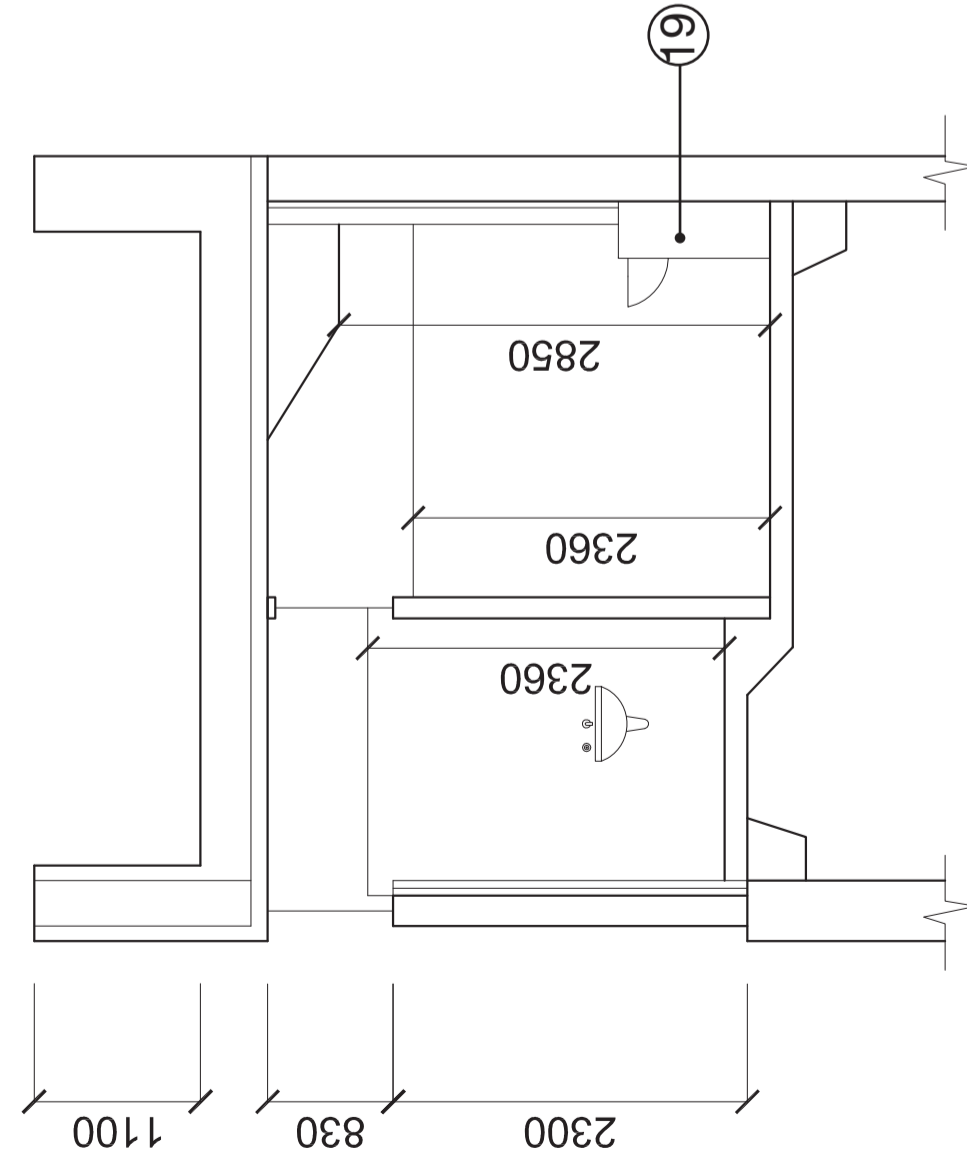


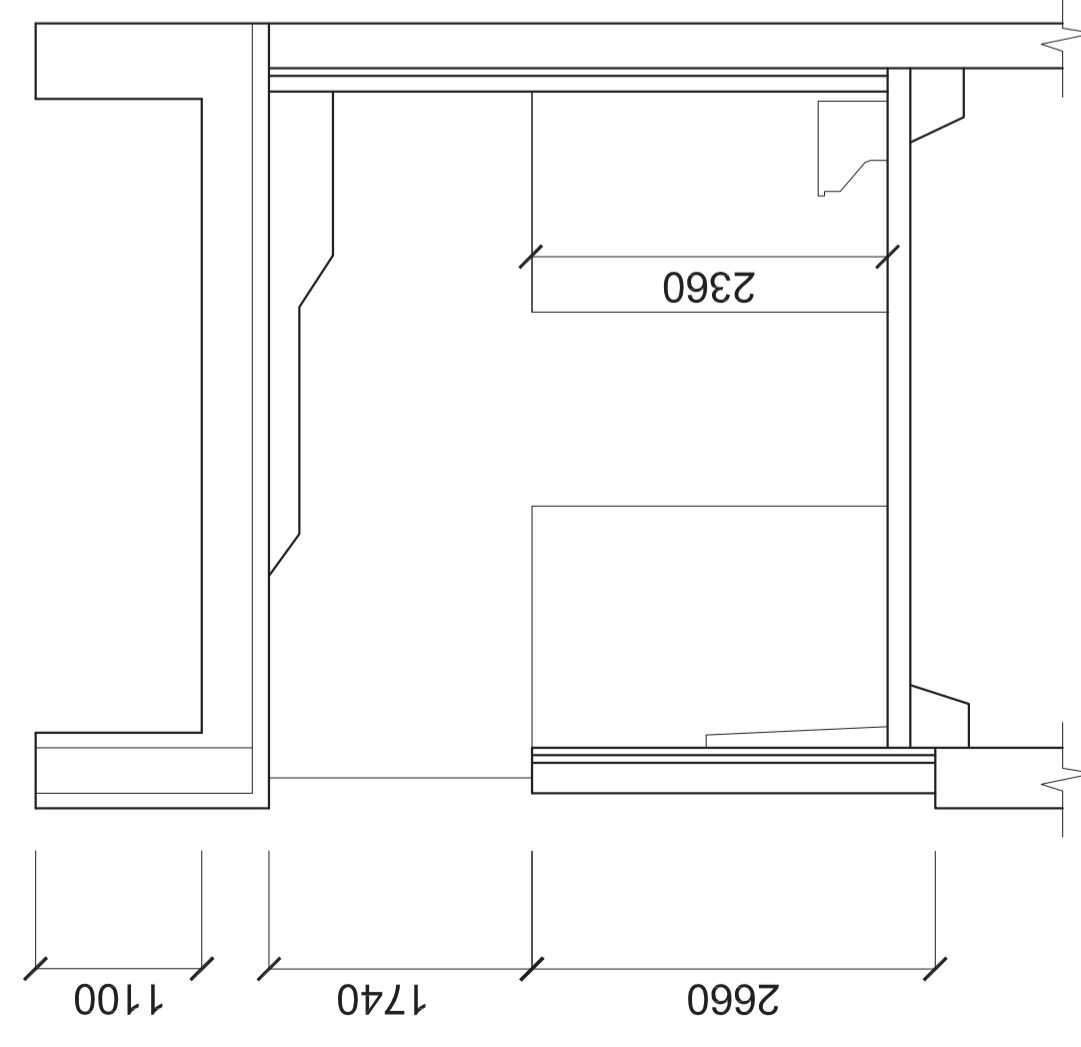
PLAN 1:100



REFLECTED CEILING PLAN 1:100



SECTION a:a 1:100



SECTION b:b 1:100

NOTES

1. Entry
2. Washroom
3. WC
4. Disabled WC Compliant with AS 1428
5. Water Supply
6. Sewer Connection
7. 3 x Hand driers (re-instate existing)
8. Re-instate existing gate
9. New doors to match existing in Female WC
10. Replace ceiling ventilation and bulkhead
11. Light fittings: Twin 36 Watt Vandal proof surface mount
12. Possible new mechanical ventilation
13. 2 x stainless steel vandal proof paper dispensers to each WC
14. Sharps Bin to match Female WC
15. 2 x Air fresheners to match Female WC
16. Masonry Walls clad in tiles
17. Existing store to be re-instated
18. Existing Switchroom
19. Dwarf Masonry wall clad in tiles
20. Stainless steel vandal proof urinal trough with low flow flush

CONTEXT PLAN

