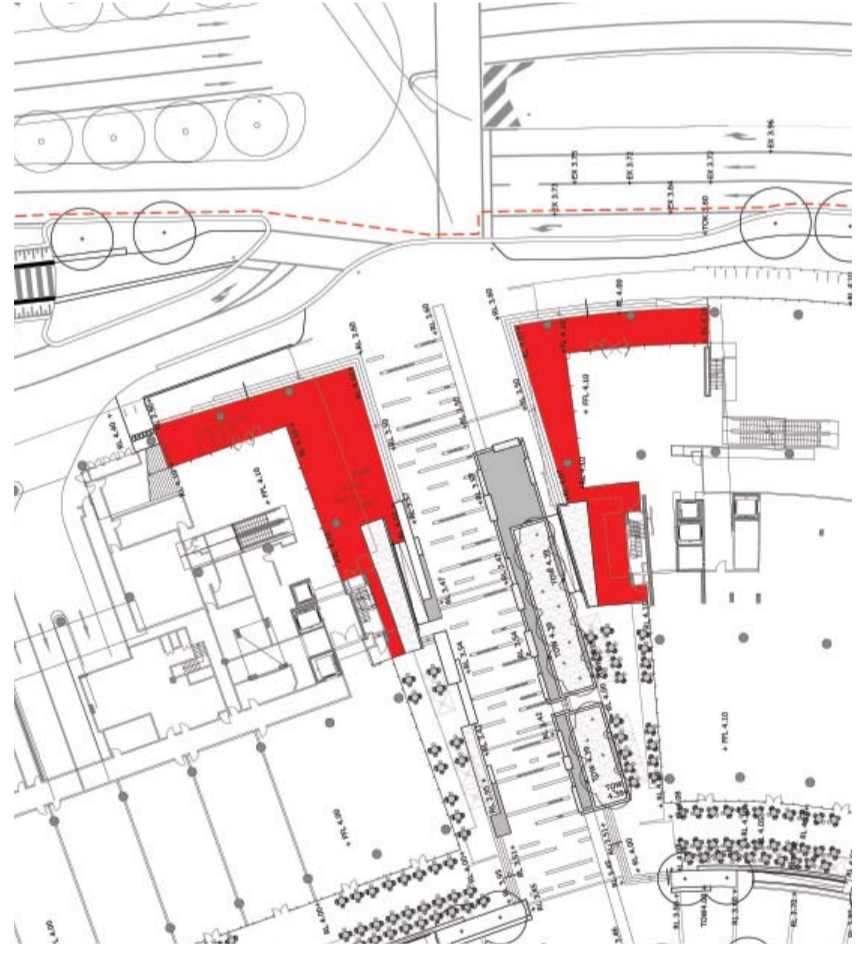
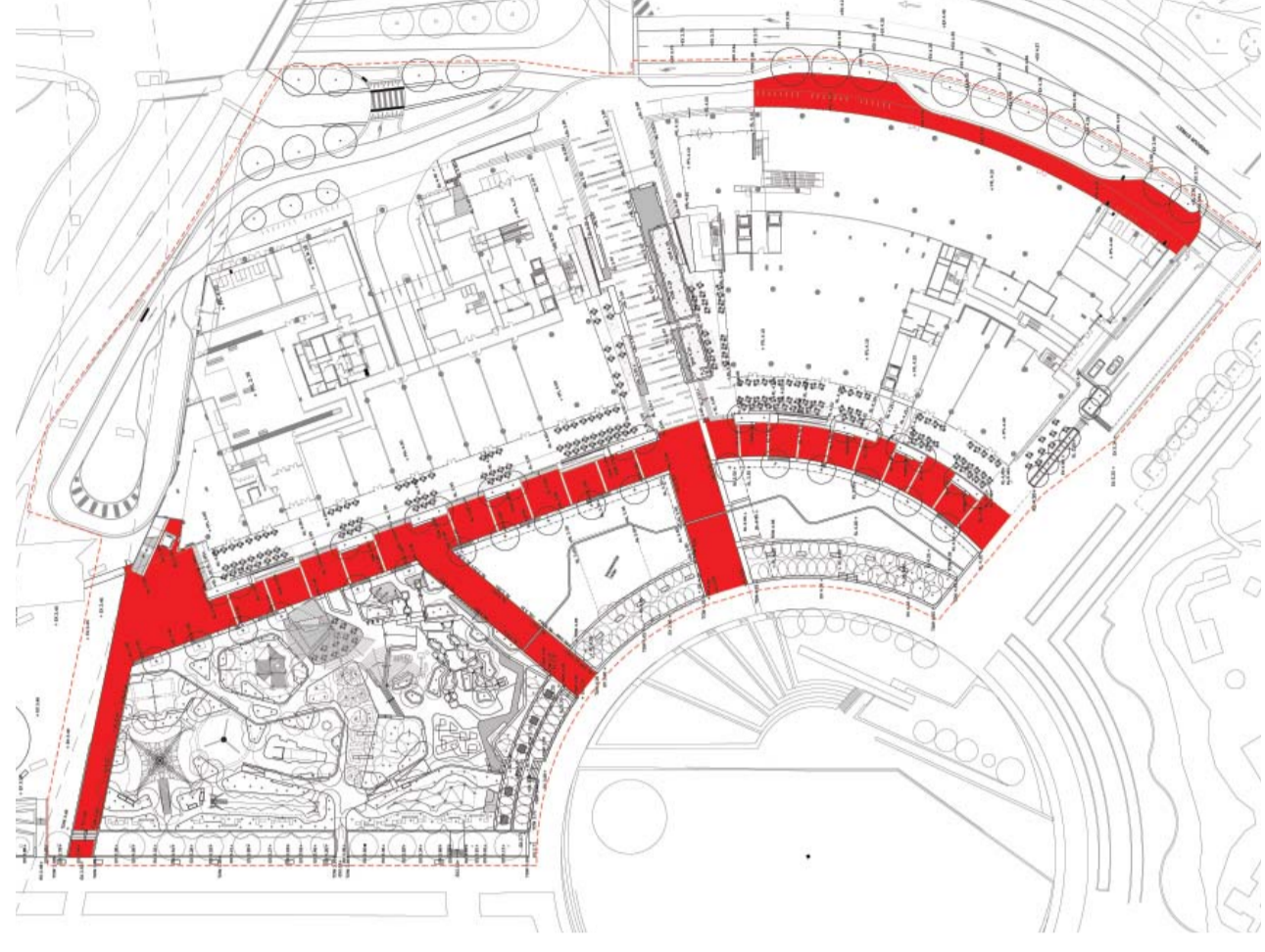




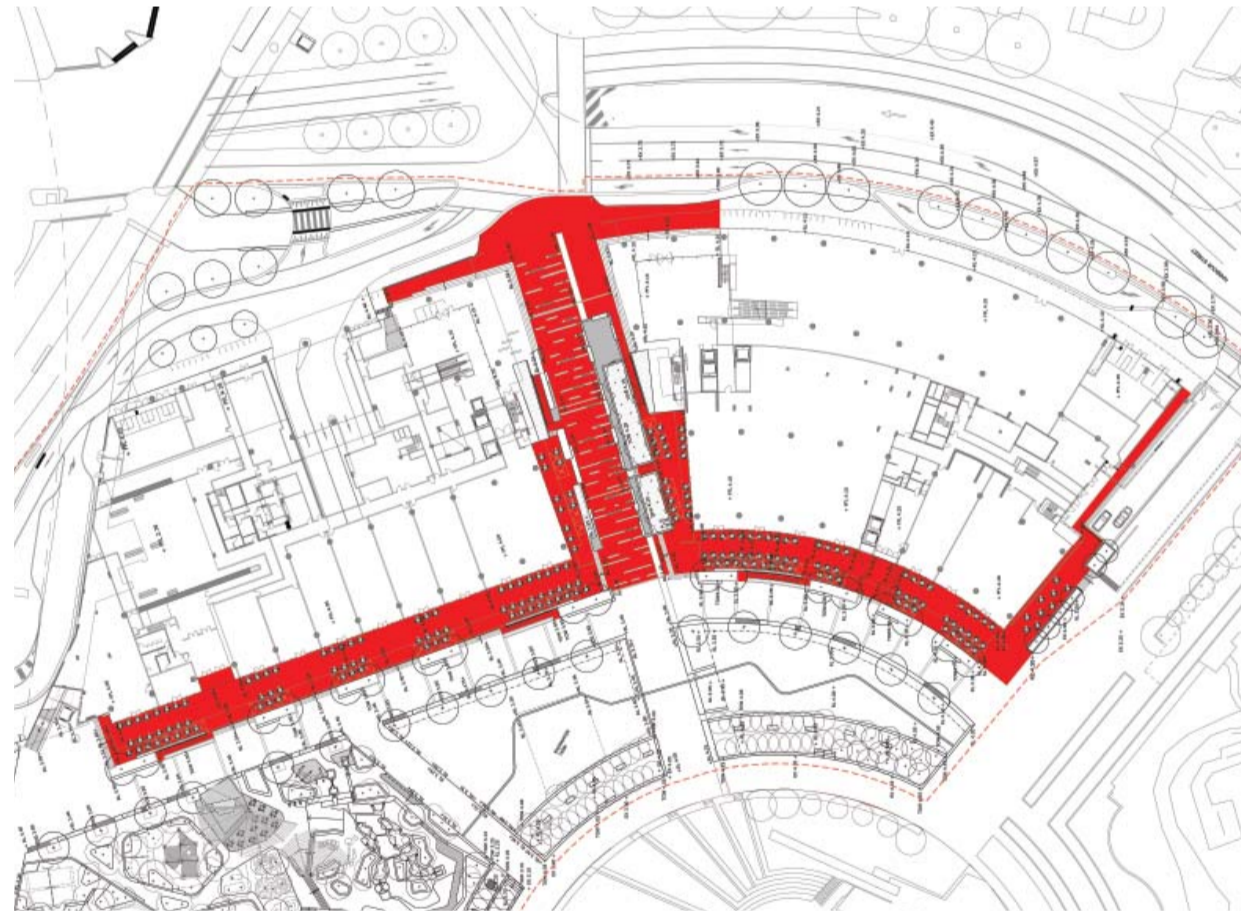
STONE PAVER
Blue stone with exfoliated finish
(600 x 600 x 50mm)



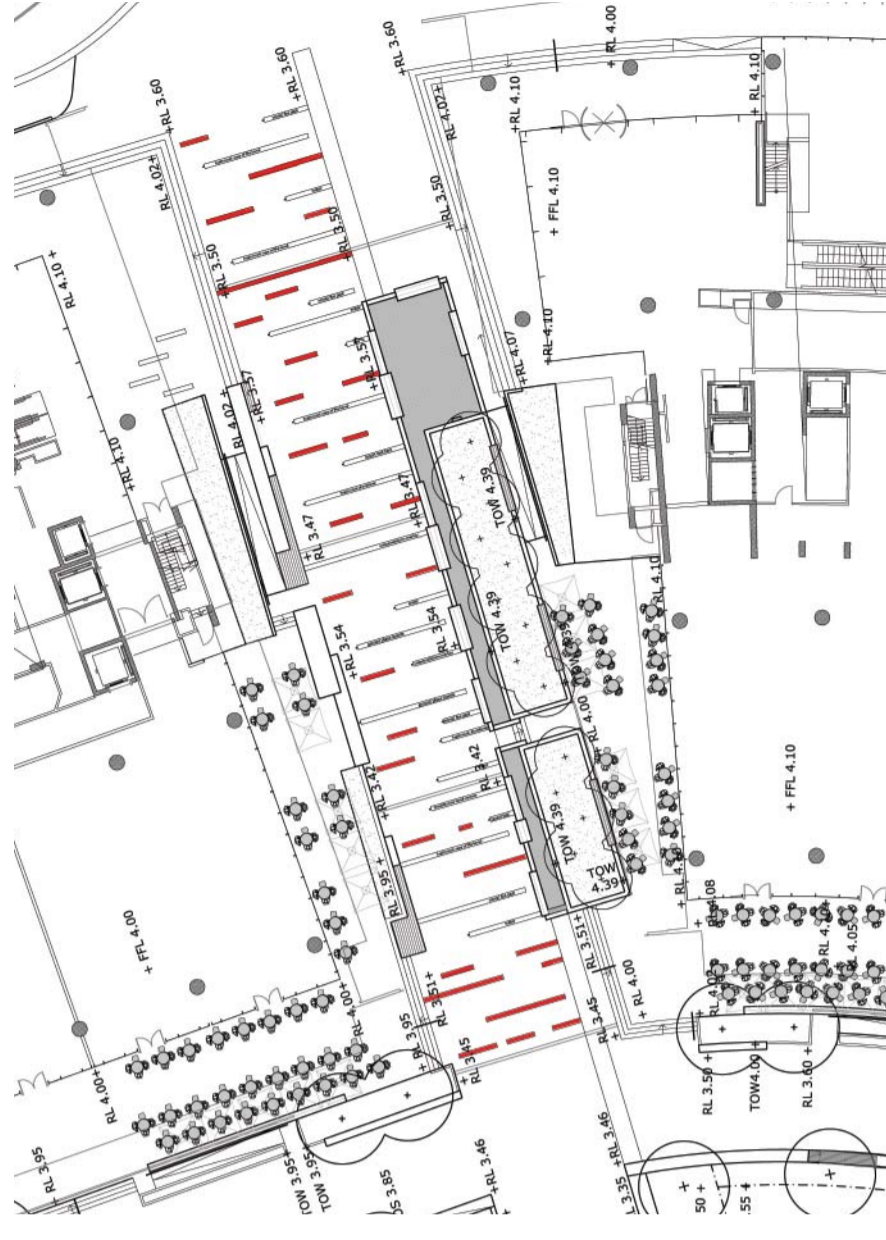
BRICK PAVER
Austral Bricks 'Gertrudis Brown'
(230 x 110 x 76mm)



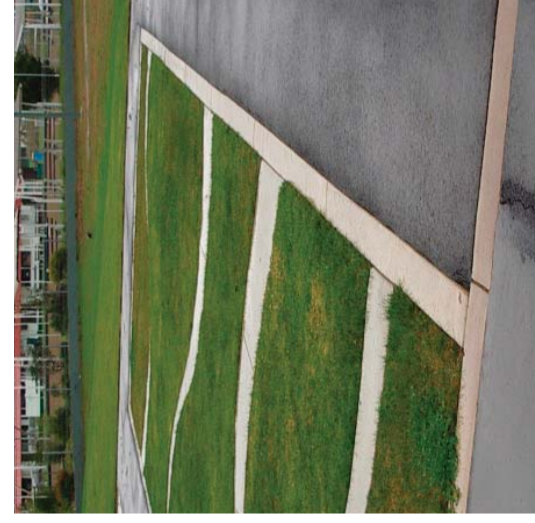
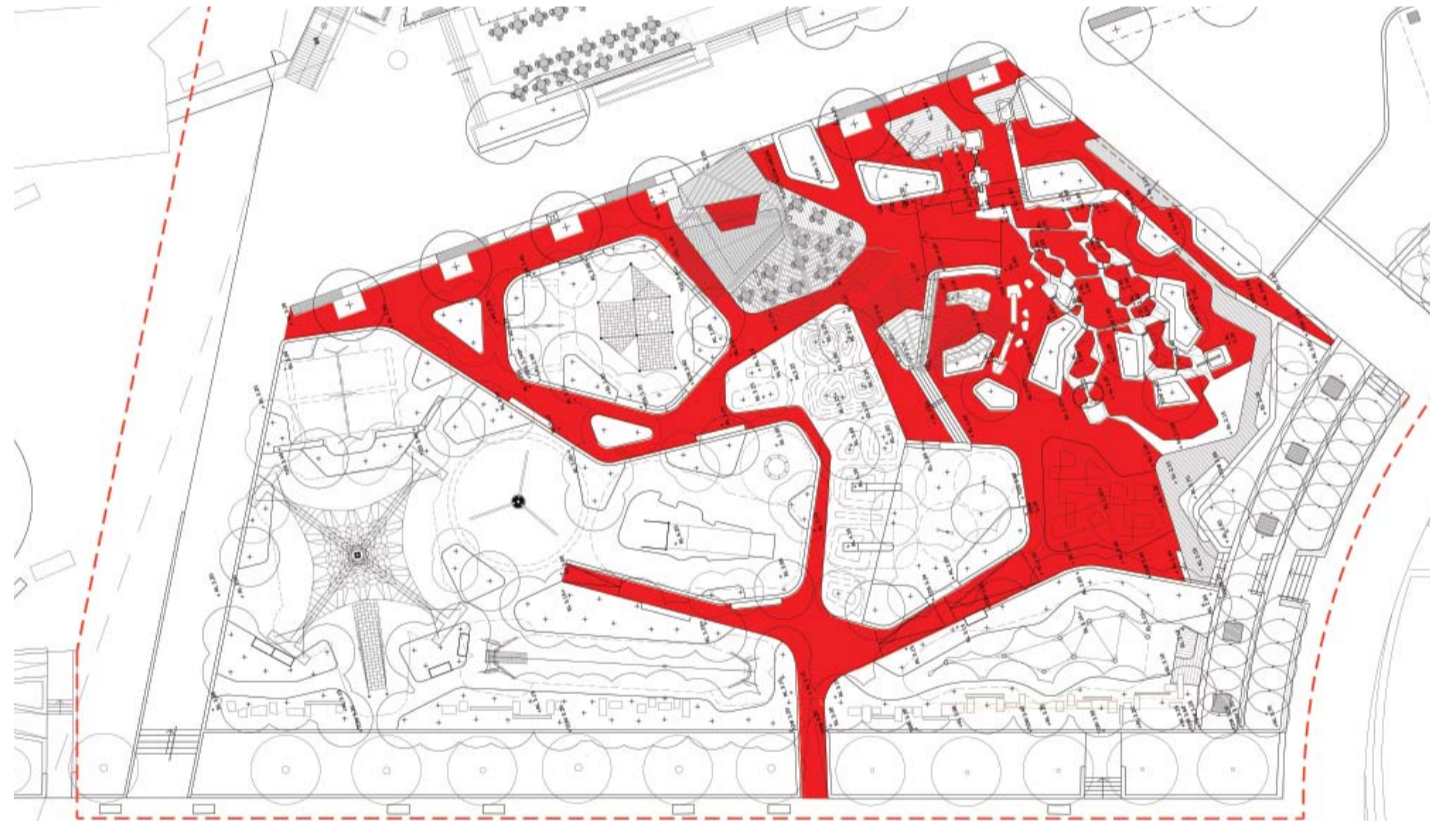
CONCRETE PAVER
C&M Paving 'Raven'
in honed and shot blasted finish
(300 x 300 x 60 & 600 x 300 x 60)



CONCRETE PAVER
C&M Paving 'Steel, Golden Glaze'
in honed and shot blasted finish
(300 x 300 x 60 & 600 x 300 x 60)



EXPOSED AGGREGATE CONCRETE
Portland grey cement with high quality
7-14mm aggregate. Aggregate to be
custom mix of crushed stones including
quartz, basalt and porphyry



CONCRETE FLUSH EDGE
Width of edge varies. Edges to be precast
or insitu. Precast edges include text cast in

