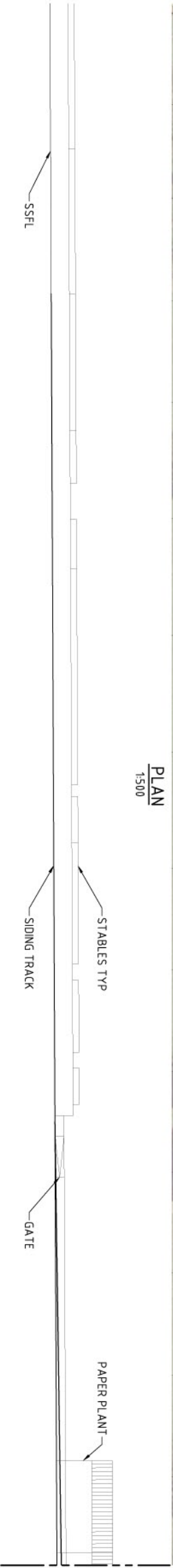
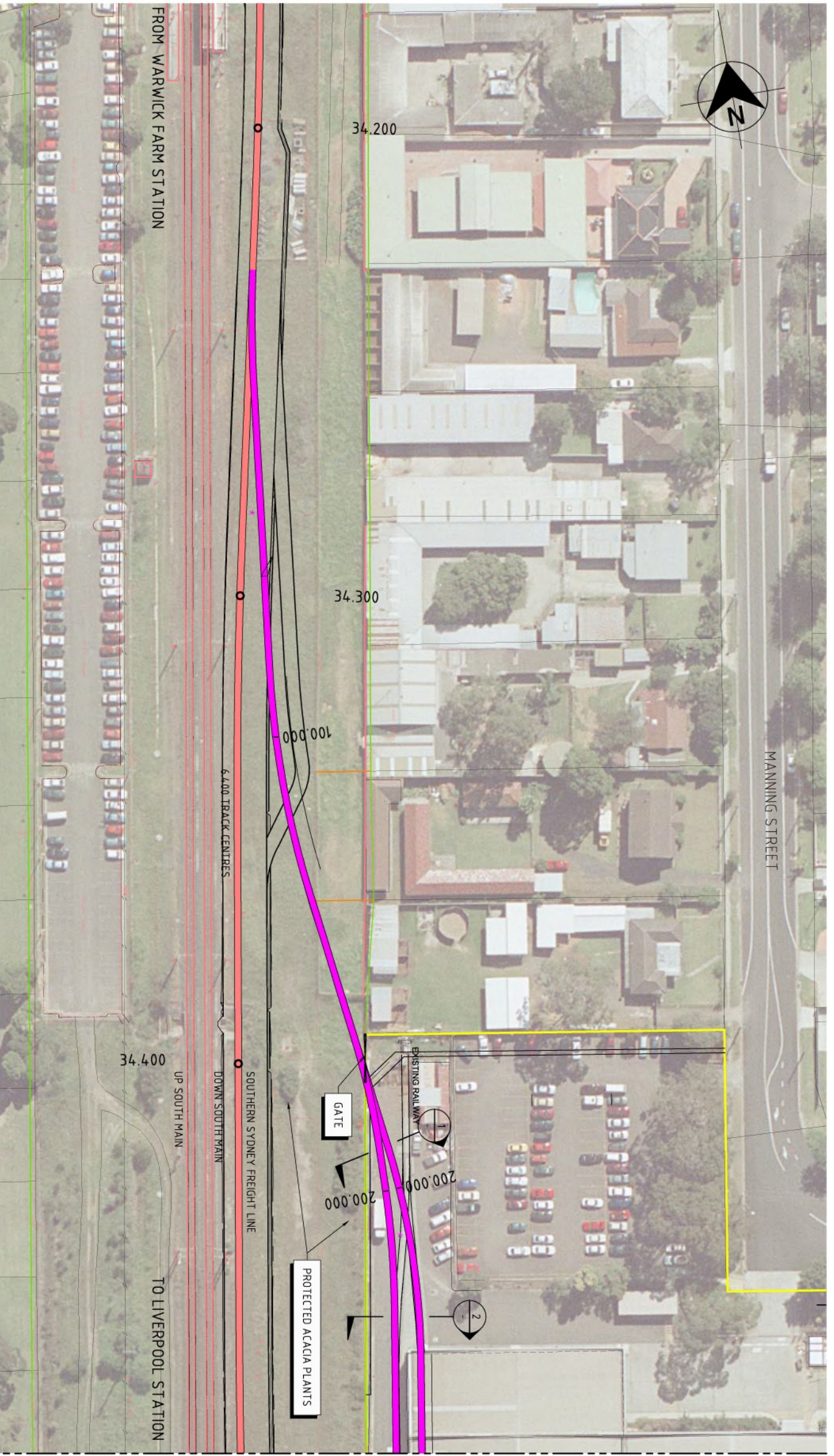


THIS DRAWING HAS BEEN REDUCED



**LEGEND**

	EXISTING TRACK		RAIL BOUNDARY
	REMOVE EXISTING TRACK		RAIL CORP MAIN
	PROPOSED TRACK SIDING		PLANT BOUNDARY
	SOUTHERN SYDNEY FREIGHT LINE		

04	10.08.09	MINOR AMENDMENTS	N/L		
03	07.08.09	RE-ISSUED FOR INFORMATION	N/L		
02	09.07.09	ISSUED FOR INFORMATION	M/M		
01	29.08.08	FOR INFORMATION	ARTS		
Rev	Date	Revision Details	Drn	Ver	App

**durecon**  
 Aurecon Australia Pty Ltd ABN 54 005 139 873 Telephone: +61 2 9465 5598  
 116 Military Road (PO Box 538) Neutral Bay Facsimile: +61 2 9465 5598  
 New South Wales 2089 Australia Email: sydney@ipmg.aurecongroup.com

Client: **IPMG**  
 Project: **IPMG SIDING AT WARWICK FARM**

SCALE 1:500

0	10	20	30	40	50m
---	----	----	----	----	-----

Drawn	Signed	Date	Drawn	Signed	Date
ARTS	ARTS		DK	DK	
Verified	Verified		CJM	CJM	
Approved	Approved		PR	PR	

Drawing Title: **RAIL GENERAL ARRANGEMENT SHEET 1**

Project No: **32762**  
 Scale: **AS SHOWN**  
 Drawing No: **RA-010**  
 Sheet Size: **A1**  
 Rev: **04**

**PRELIMINARY**  
 NOT FOR CONSTRUCTION