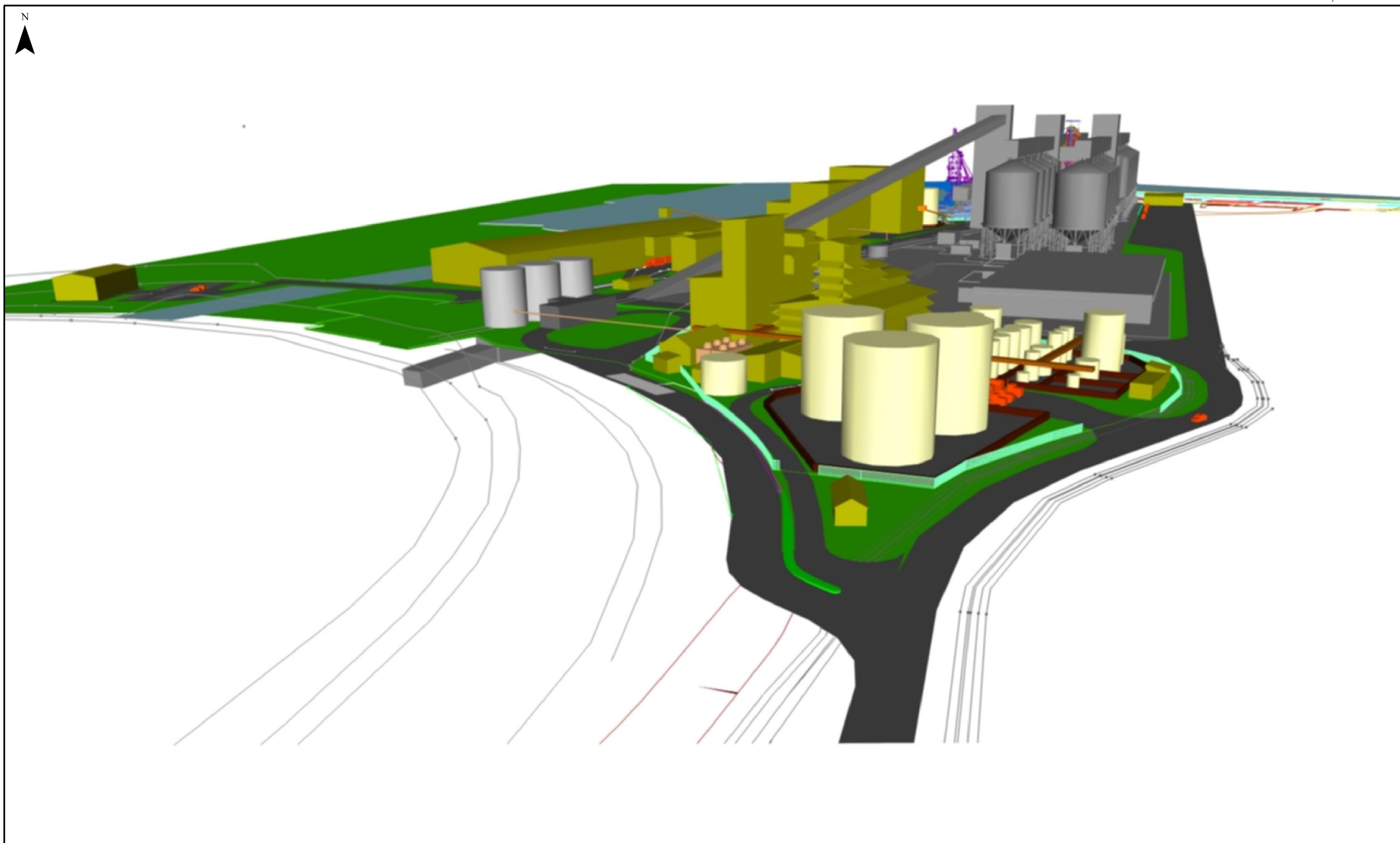


Appendix D Design layout & elevations





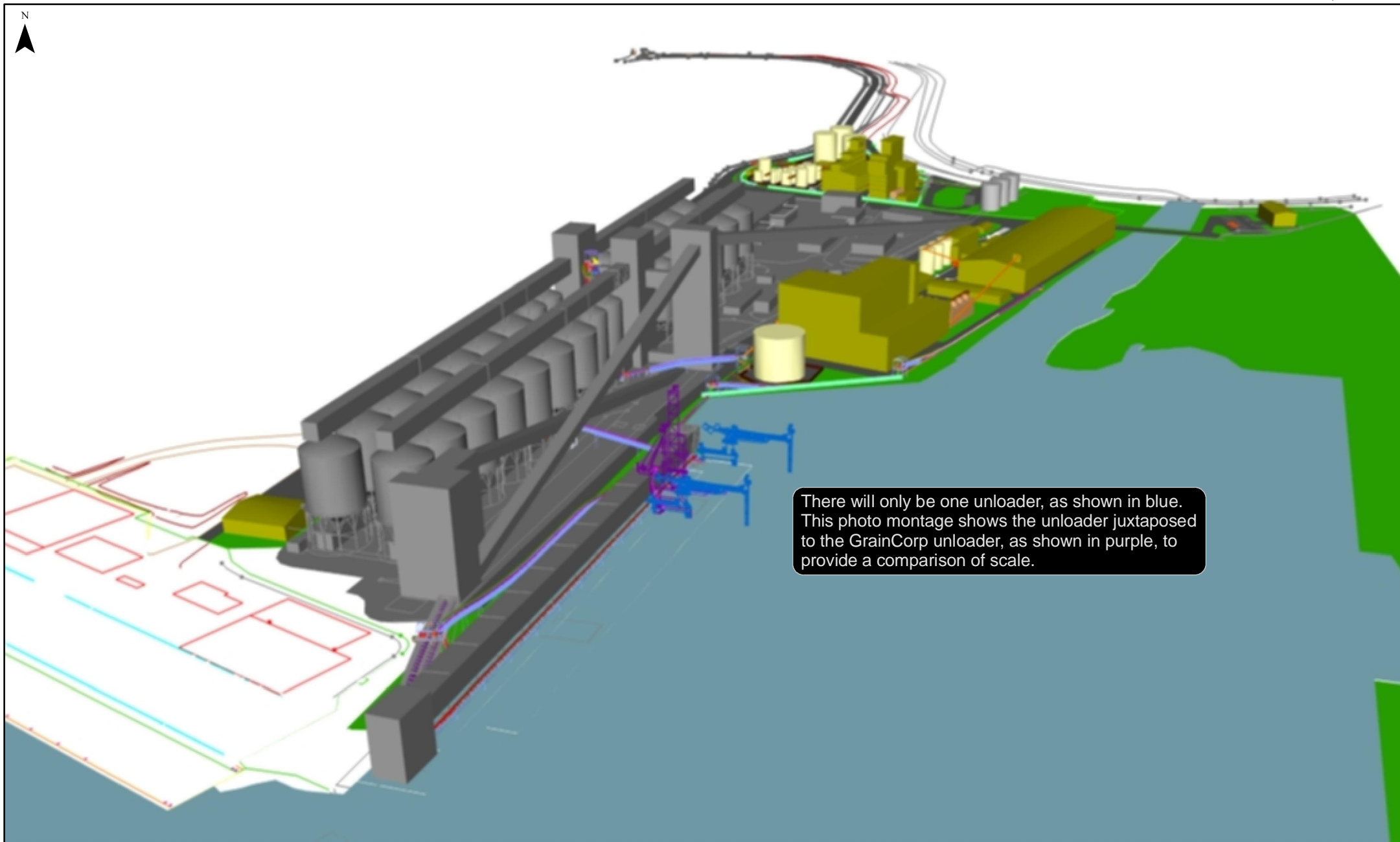
SOYBEAN PROCESSING AND BIODIESEL PRODUCTION FACILITY
SOUTHWARD PERSPECTIVE VIEW

Source: SKM (2008)

DEC 2008

60042651

Fig. 4



There will only be one unloader, as shown in blue. This photo montage shows the unloader juxtaposed to the GrainCorp unloader, as shown in purple, to provide a comparison of scale.

SOYBEAN PROCESSING AND BIODIESEL PRODUCTION FACILITY
SOUTHWARD PERSPECTIVE VIEW

Source: SKM (2008)



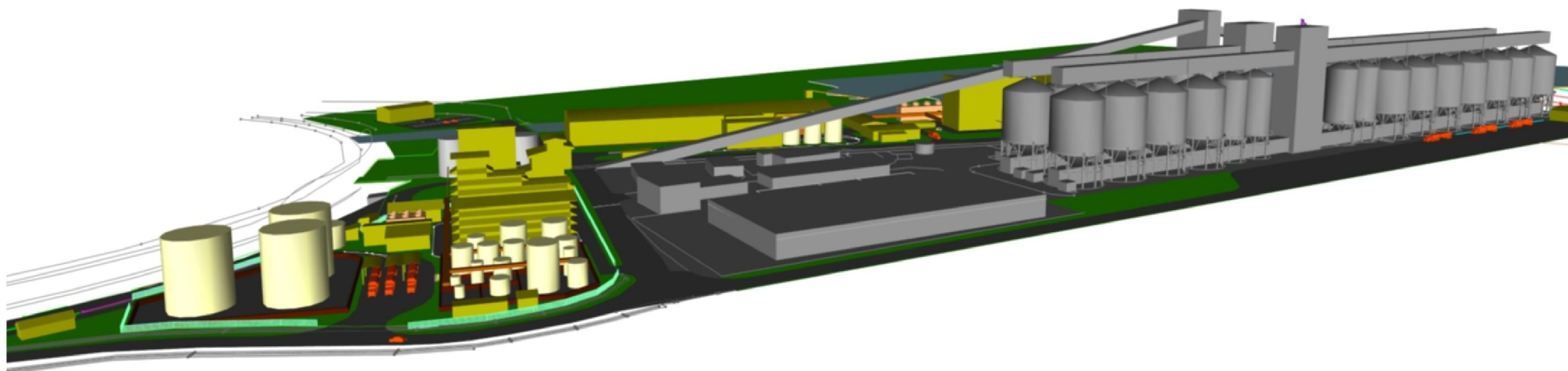
SOYBEAN PROCESSING AND BIODIESEL PRODUCTION FACILITY
SOUTHEASTWARD PERSPECTIVE VIEW

Source: SKM (2008)

DEC 2008

60042651

Fig. 2



SOYBEAN PROCESSING AND BIODIESEL PRODUCTION FACILITY
EASTWARD PERSPECTIVE VIEW

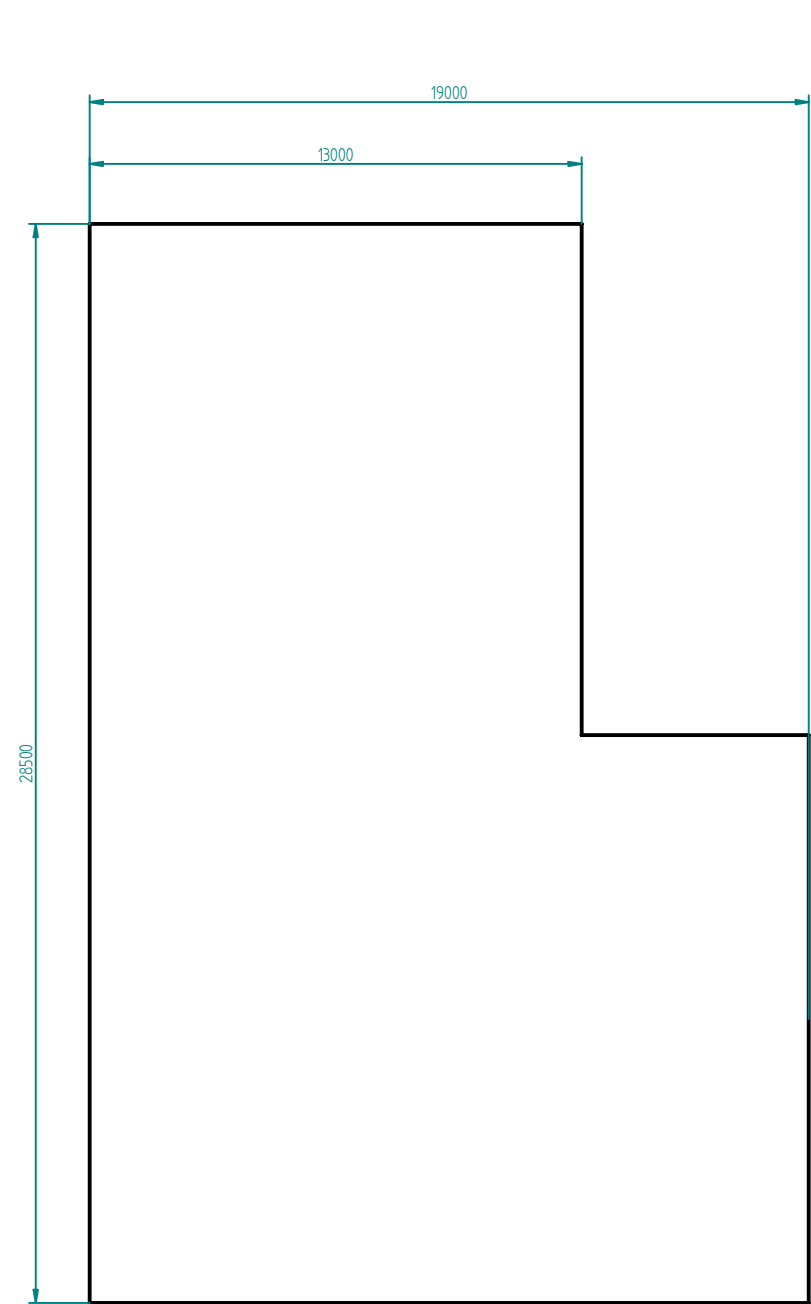
Source: SKM (2008)

DEC 2008

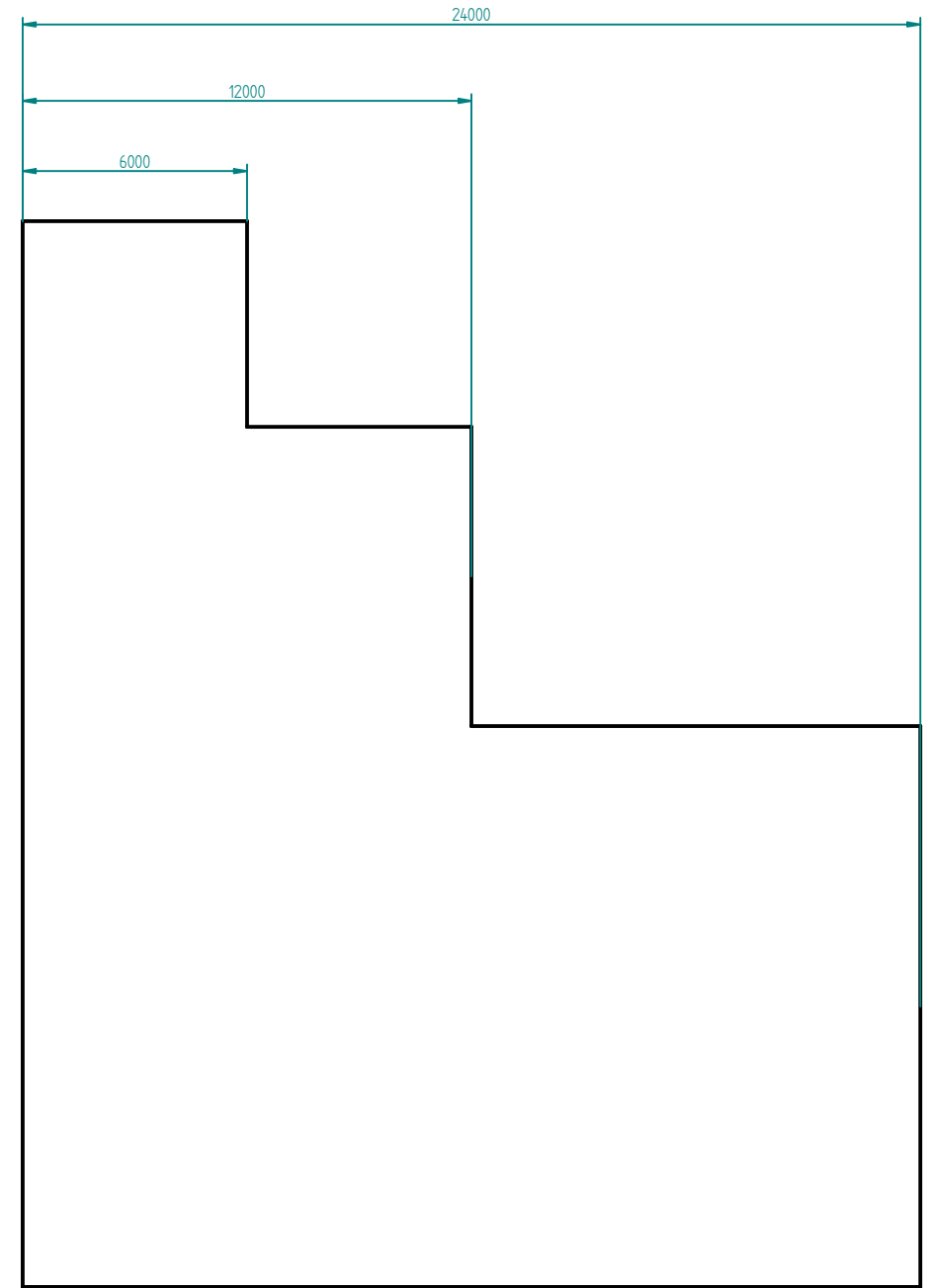
60042651

Fig. 1

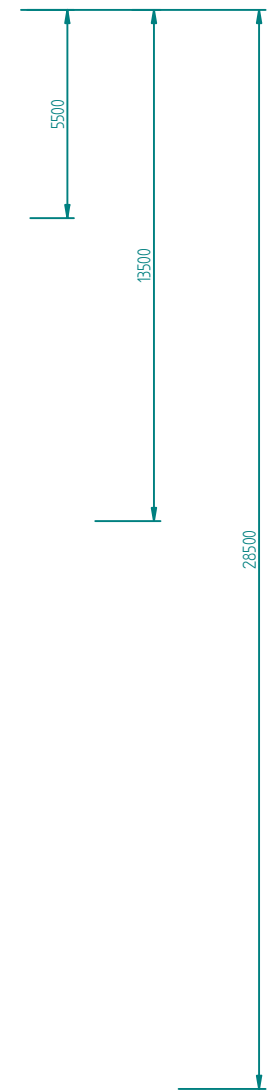
REVISION HISTORY			
REV	DESCRIPTION	DATE	APPROVED




FRONT VIEW

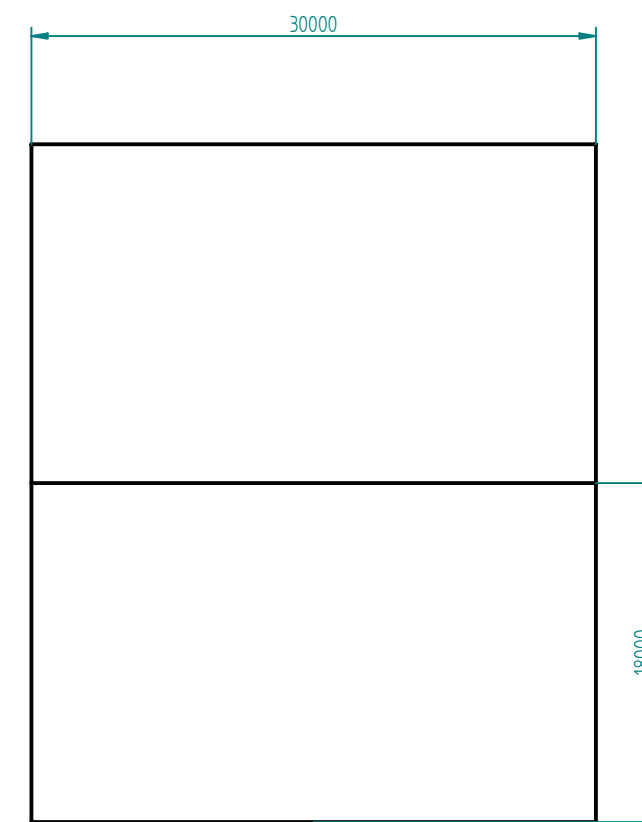
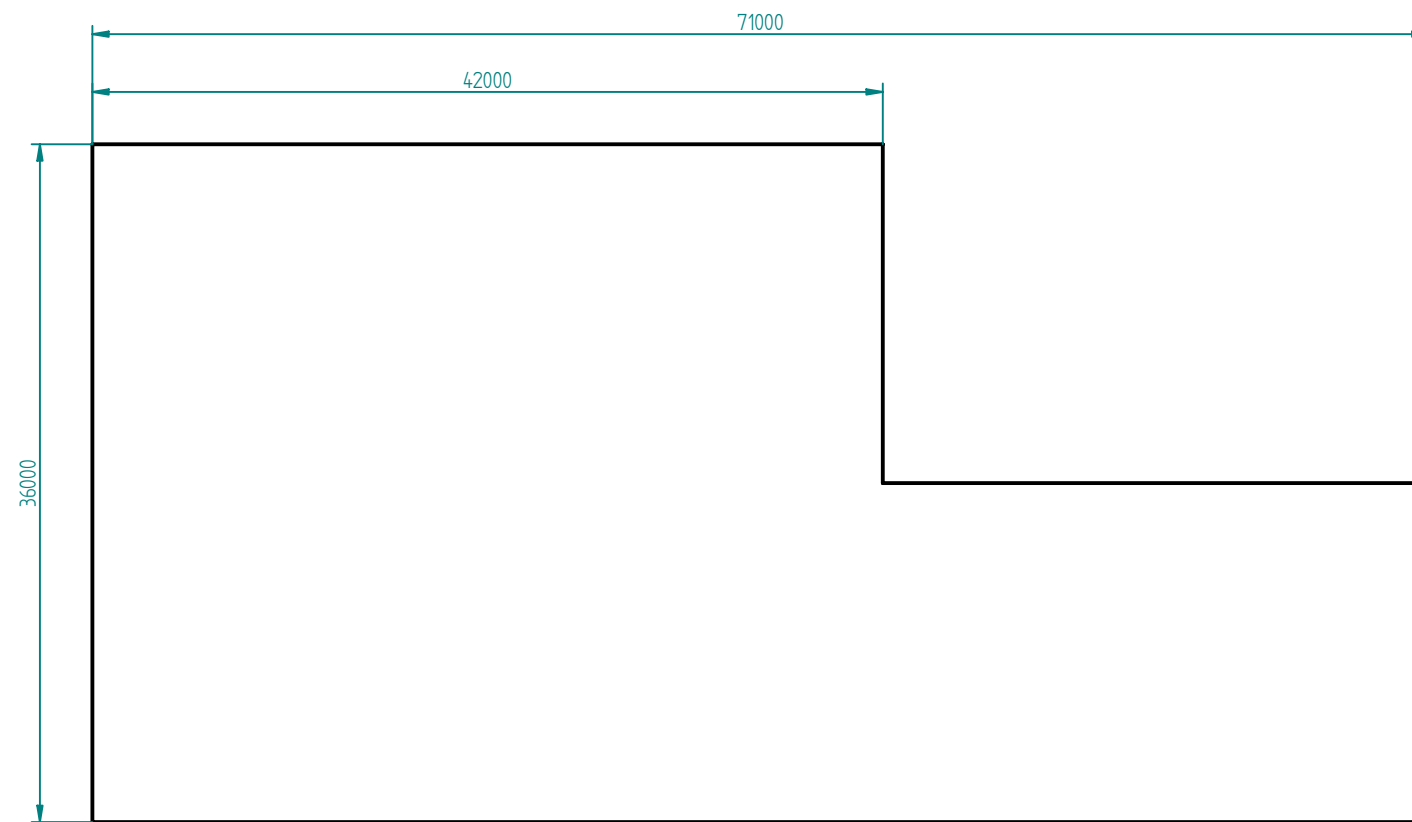


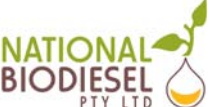
SIDE VIEW



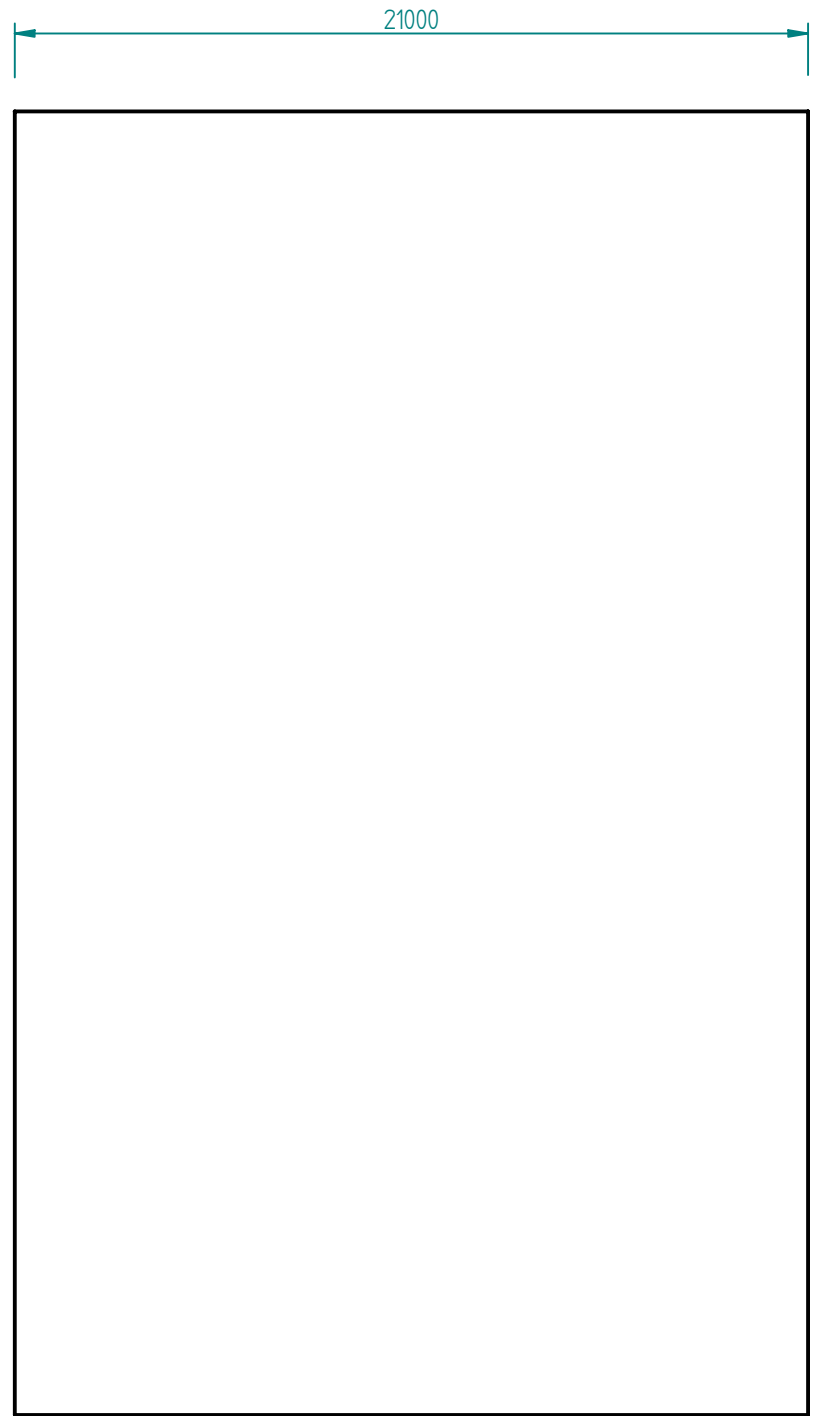
	NAME	DATE	 A MEMBER OF THE NATIONAL BIOFUELS GROUP PTY LTD
DRAWN	J. SHERWOOD	12/03/08	
CHECKED			
ENG APPR			
MGR APPR			TITLE
UNLESS OTHERWISE SPECIFIED DIMENSIONS ARE IN MILLIMETERS ANGLES ±X.X° 2 PL ±X.XX 3 PL ±X.XXX			PRETREATMENT - ELEVATION PROFILE
SIZE	DWG NO	REV	
A3	NB010306-01	1	
PROJECT: PT KEMBLA CRUSHING & BIODIESEL FACILITY			
SCALE: 1:200	WEIGHT:	SHEET 1 OF 1	

REVISION HISTORY			
REV	DESCRIPTION	DATE	APPROVED

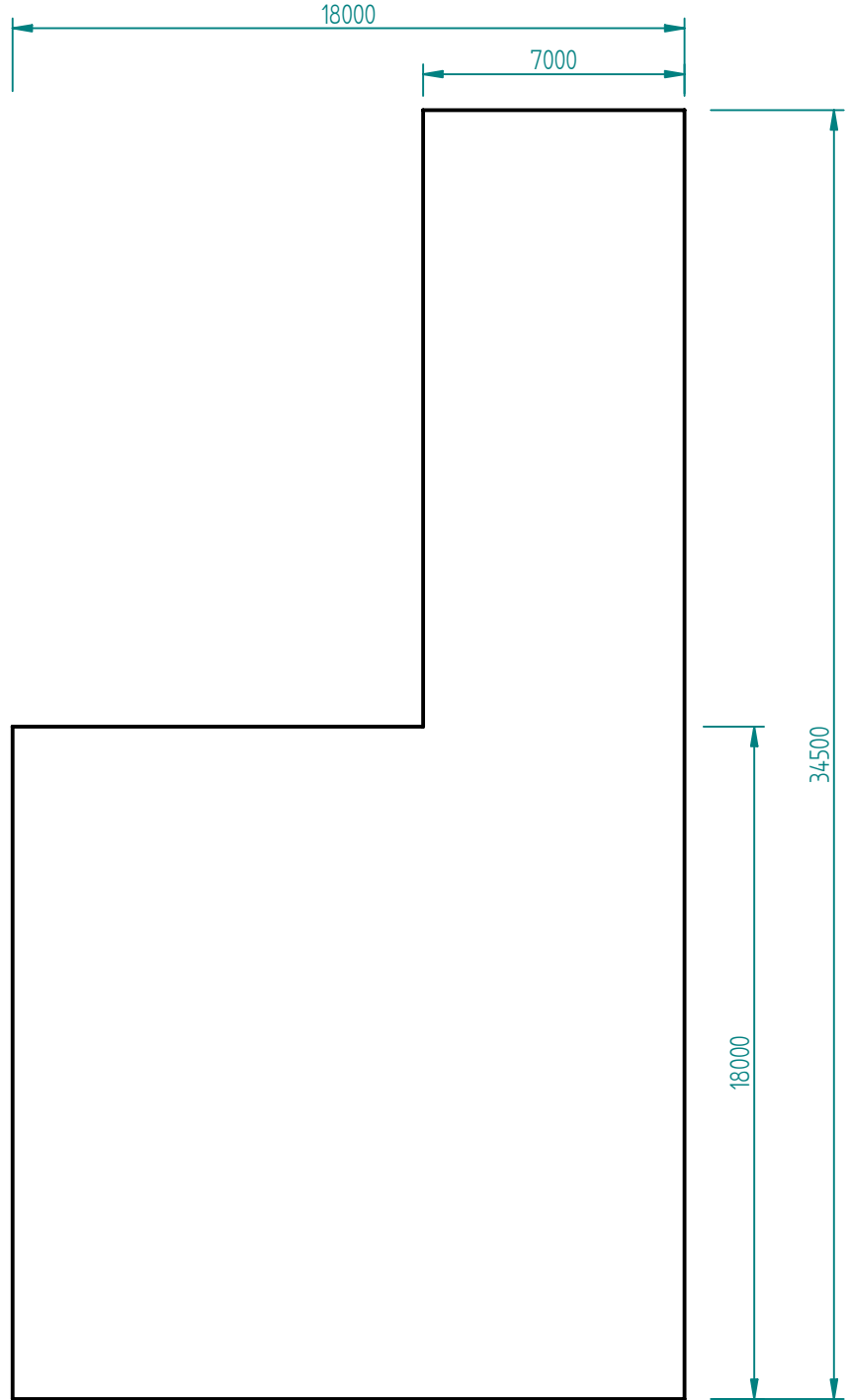


	NAME	DATE	 A MEMBER OF THE NATIONAL BIOFUELS GROUP PTY LTD	
DRAWN	J.SHERWOOD	17/03/08		
CHECKED				
ENG APPR				
MGR APPR			TITLE PREPARATIONS - ELEVATION PROFILE	
UNLESS OTHERWISE SPECIFIED DIMENSIONS ARE IN MILLIMETERS ANGLES ±X.X° 2 PL ±X.XX 3 PL ±X.XXX			SIZE A3 DWG NO NB010106-01 SCALE: 1:400 WEIGHT:	REV 1 PROJECT: PT KEMBLA CRUSHING & BIODIESEL FACILITY SHEET 1 OF 1


REVISION HISTORY			
REV	DESCRIPTION	DATE	APPROVED



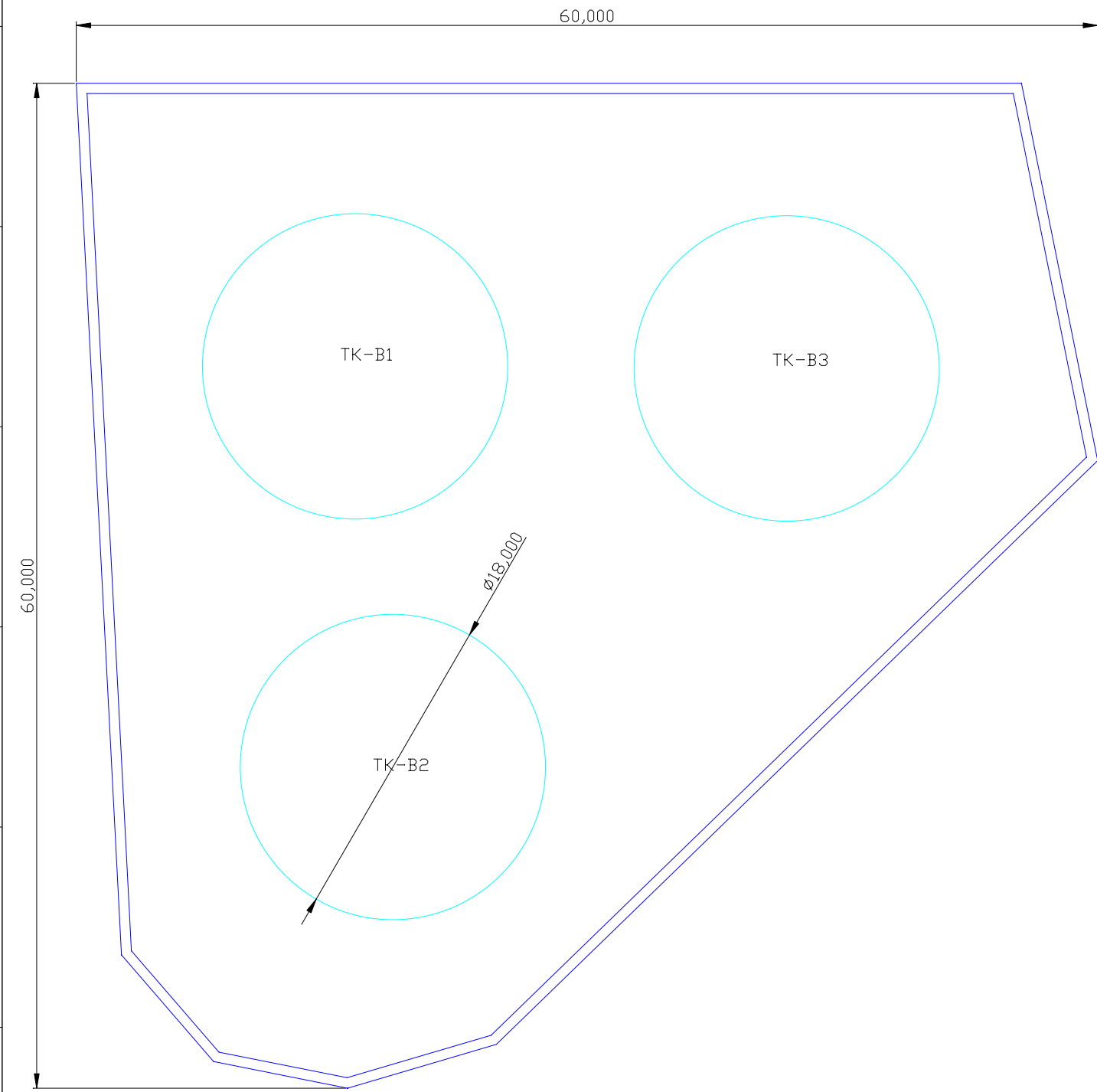
FRONT VIEW



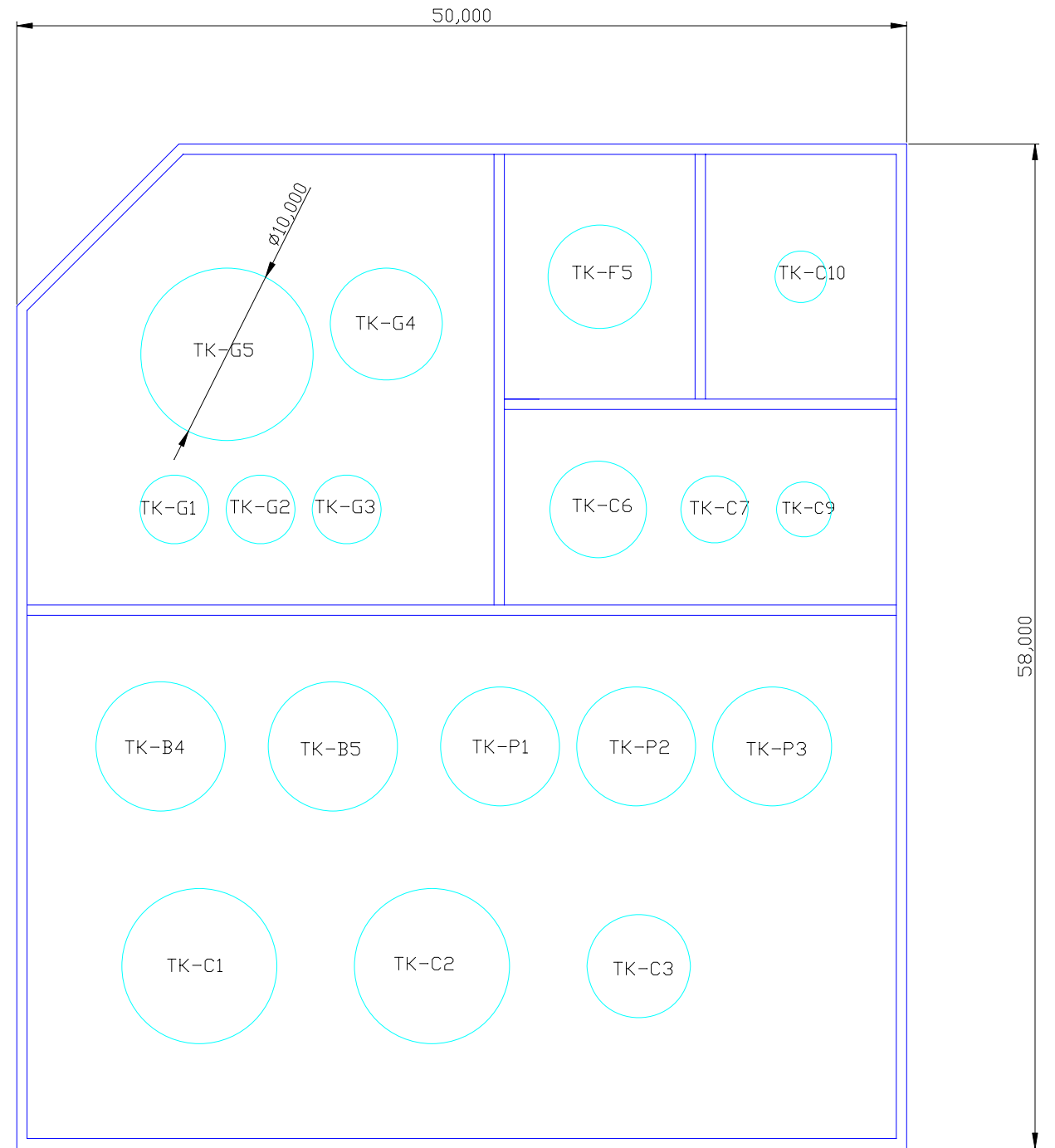
SIDE VIEW

	NAME	DATE	 A MEMBER OF THE NATIONAL BIOFUELS GROUP PTY LTD
DRAWN	J.SHERWOOD	12/03/08	
CHECKED			
ENG APPR			
MGR APPR			TITLE GLYCERINE REFINING - ELEVATION PROFILE
UNLESS OTHERWISE SPECIFIED DIMENSIONS ARE IN MILLIMETERS ANGLES ±X.X° 2 PL ±X.XX 3 PL ±X.XXX			SIZE A3 DWG NO NBO10506-01 PROJECT: PT KEMBLA CRUSHING & BIODIESEL FACILITY SCALE: 1:200 WEIGHT: SHEET 1 OF 1
			REV 1

ALLOTMENT 3



ALLOTMENT 3



ASSUMPTIONS:
 BUND WALL THICKNESS 600mm
 BUND HEIGHT 1500mm

PLOT DATE: 20081124 DWG FILE: NB010600tankfarm.dwg

DETAILS OF AMENDMENT

APP'D DATE

DESIGNED J SHERWOOD	APPROVED E DUTTON
DRAWN J SHERWOOD	24-11-2008
VERIFIED	ACCEPTED



CONTRACT No.

COPYRIGHT
 THIS DESIGN IS NOT
 TO BE COPIED OR
 AMENDED WITHOUT
 WRITTEN PERMISSION
 FROM NATIONAL BIODIESEL

TANK FARMS
 GENERAL ARRANGEMENT
 SHOWING BUNDING

PROJECT NB01

SCALE

DRAWING No.

NB010600-C

DRAFT DRAWING STATUS

PRELIMINARY
 FOR REVIEW

7

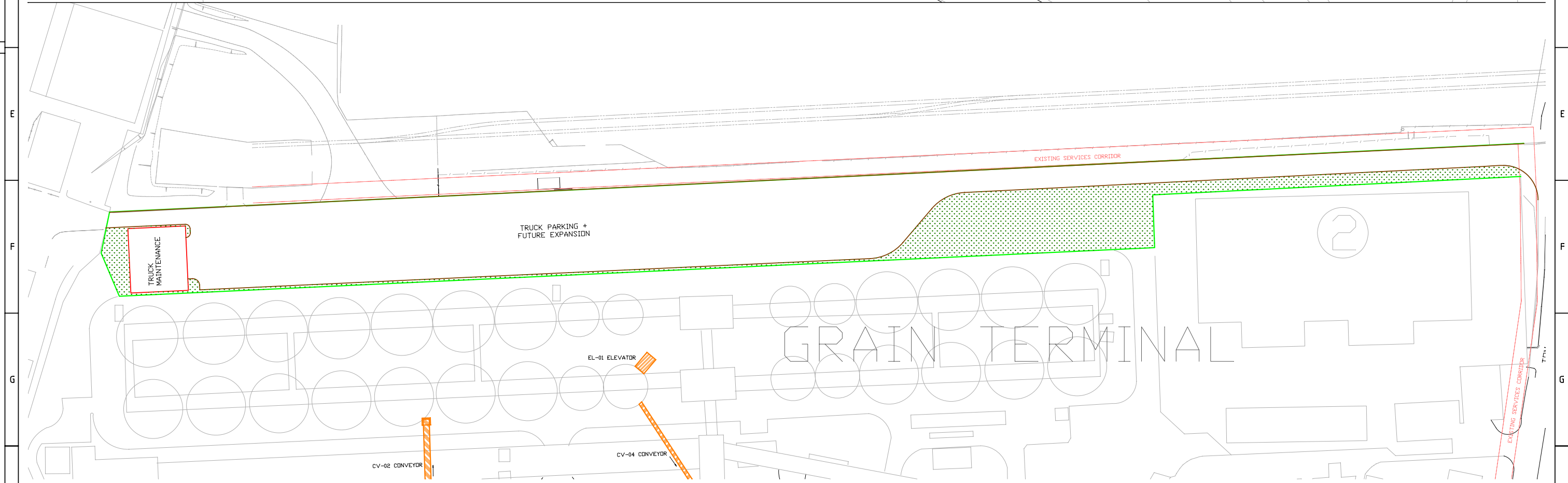
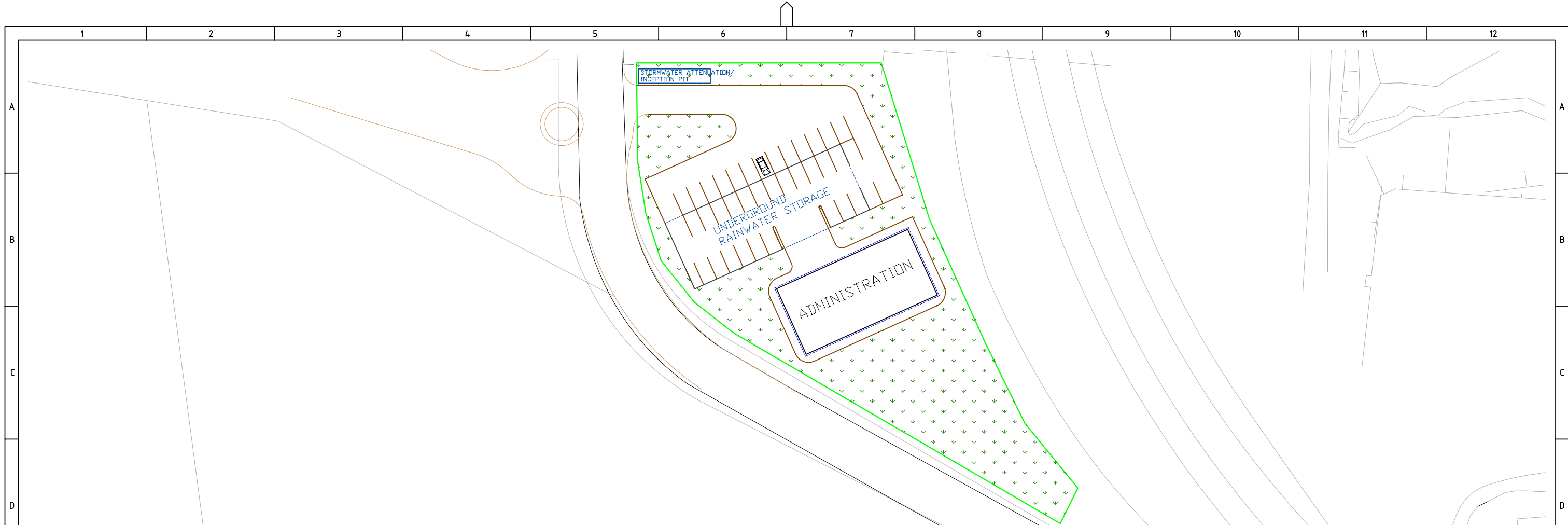
8


9

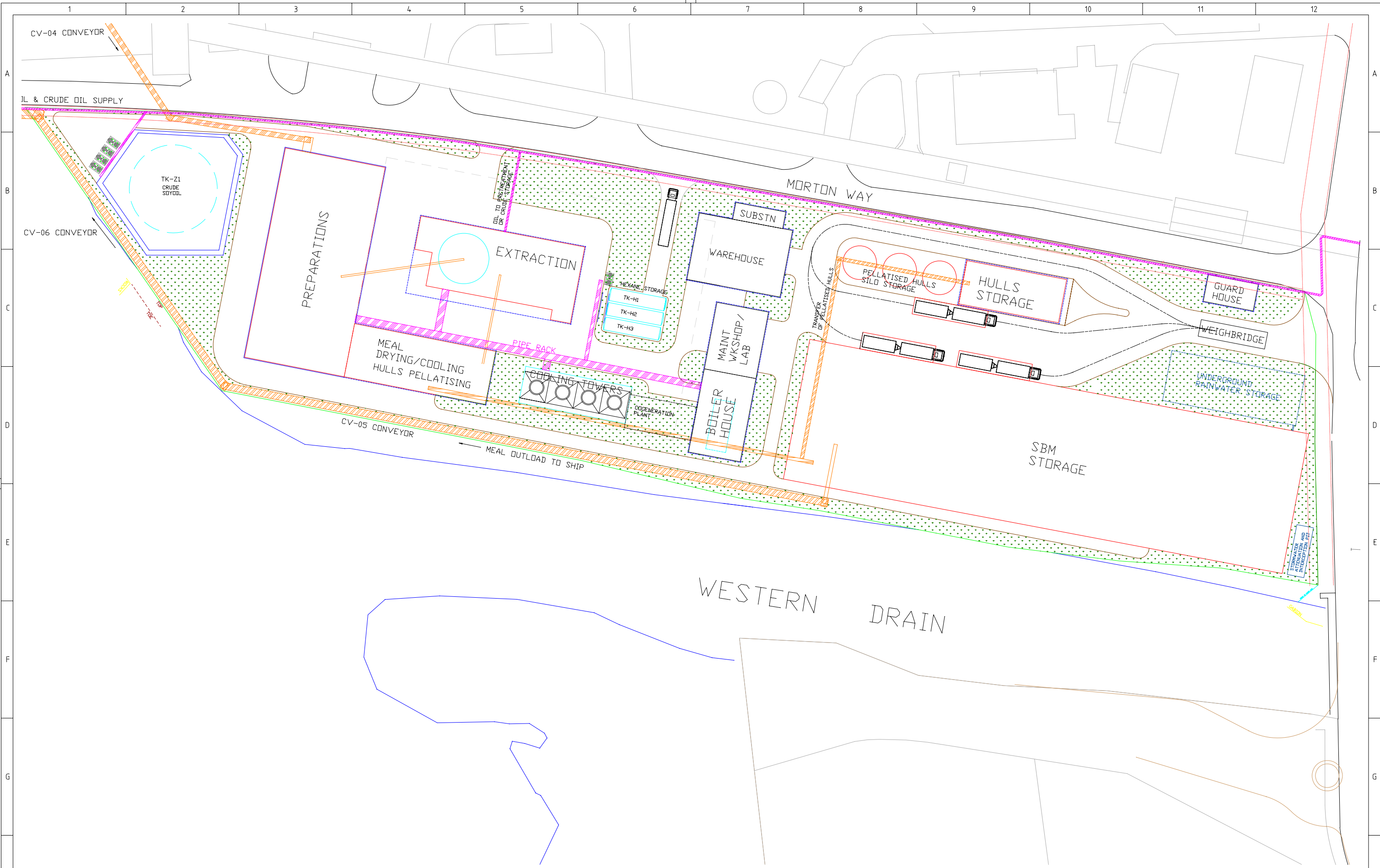
10


11

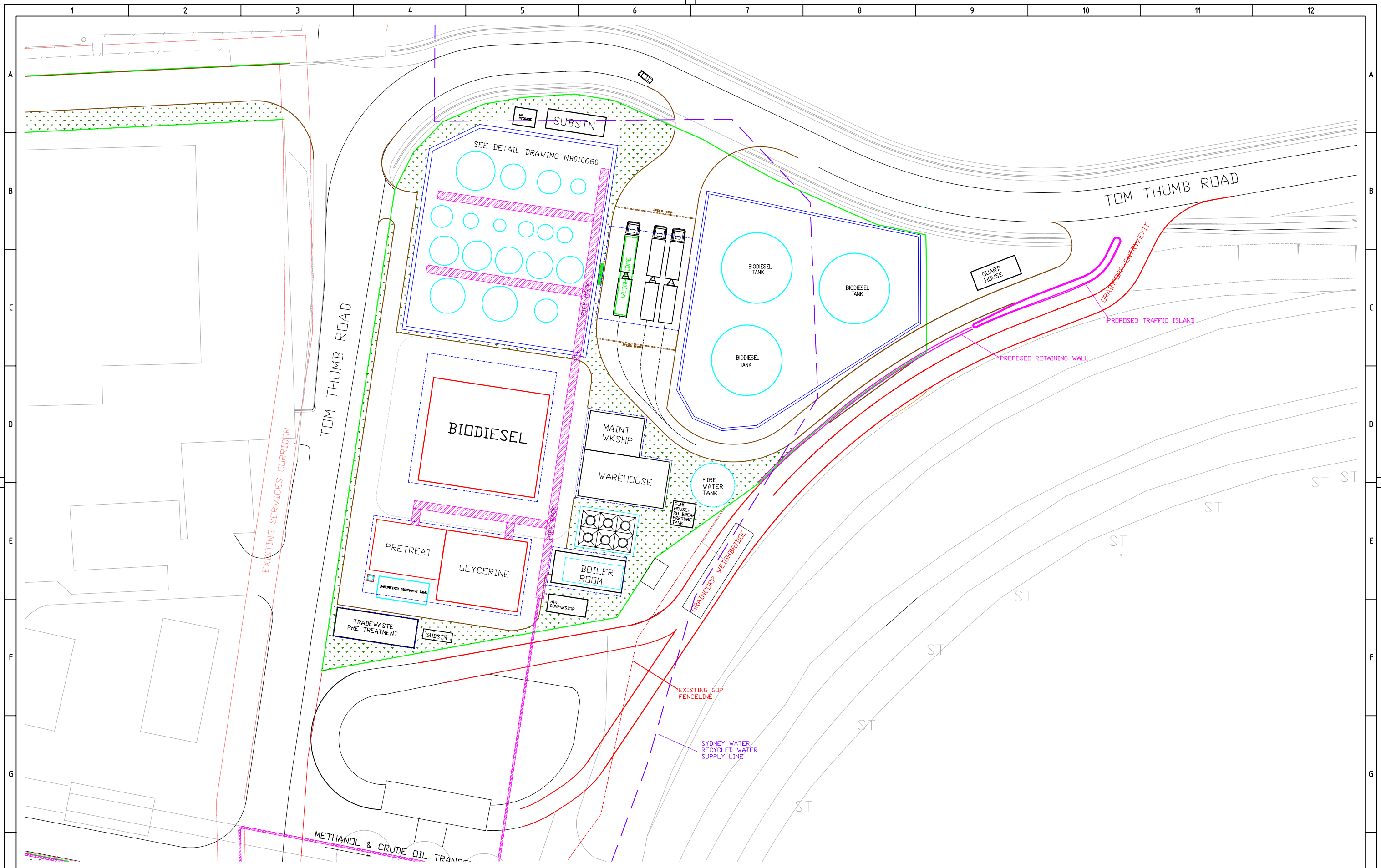
12



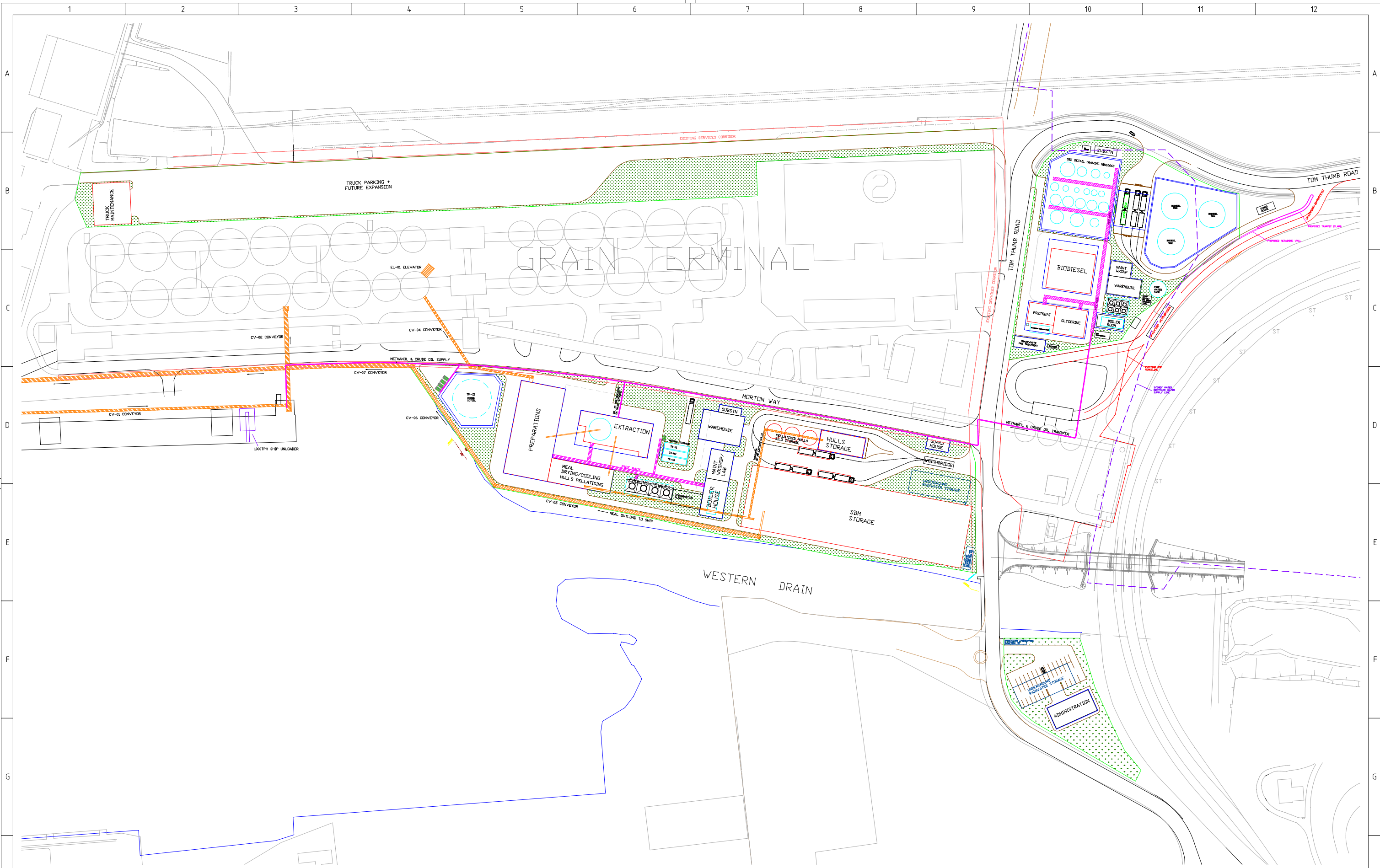
DESIGNED J SHERWOOD	APPROVED 24-11-2008 E DUTTON	 NATIONAL BIODIESEL PTY LTD	COPYRIGHT THIS DESIGN IS NOT TO BE COPIED OR AMENDED WITHOUT WRITTEN PERMISSION FROM NATIONAL BIODIESEL	SOYBEAN PROCESSING & BIODIESEL PRODUCTION FACILITY GENERAL ARRANGEMENT - SITES 1 & 6	DRAWING No. NB0100-2-A
					DRAFT DRAWING STATUS PRELIMINARY FOR REVIEW
DRAWN J SHERWOOD	ACCEPTED	CONTRACT No.	PROJECT NB01	SCALE AS SHOWN	A1
DETAILS OF AMENDMENT		APP'D	DATE	7	8




DESIGNED J SHERWOOD	DRAWN J SHERWOOD	VERIFIED	APPROVED	ACCEPTED	24-11-2008	CONTRACT No.		COPYRIGHT THIS DESIGN IS NOT TO BE COPIED OR AMENDED WITHOUT WRITTEN PERMISSION FROM NATIONAL BIODIESEL	SOYBEAN PROCESSING & BIODIESEL PRODUCTION FACILITY GENERAL ARRANGEMENT - SITE 5	PROJECT NB01	SCALE AS SHOWN	A1	DRAWING No. NB0101-1-A	
													DRAFT	DRAWING STATUS PRELIMINARY FOR REVIEW
DETAILS OF AMENDMENT			APP'D	DATE	E DUTTON									

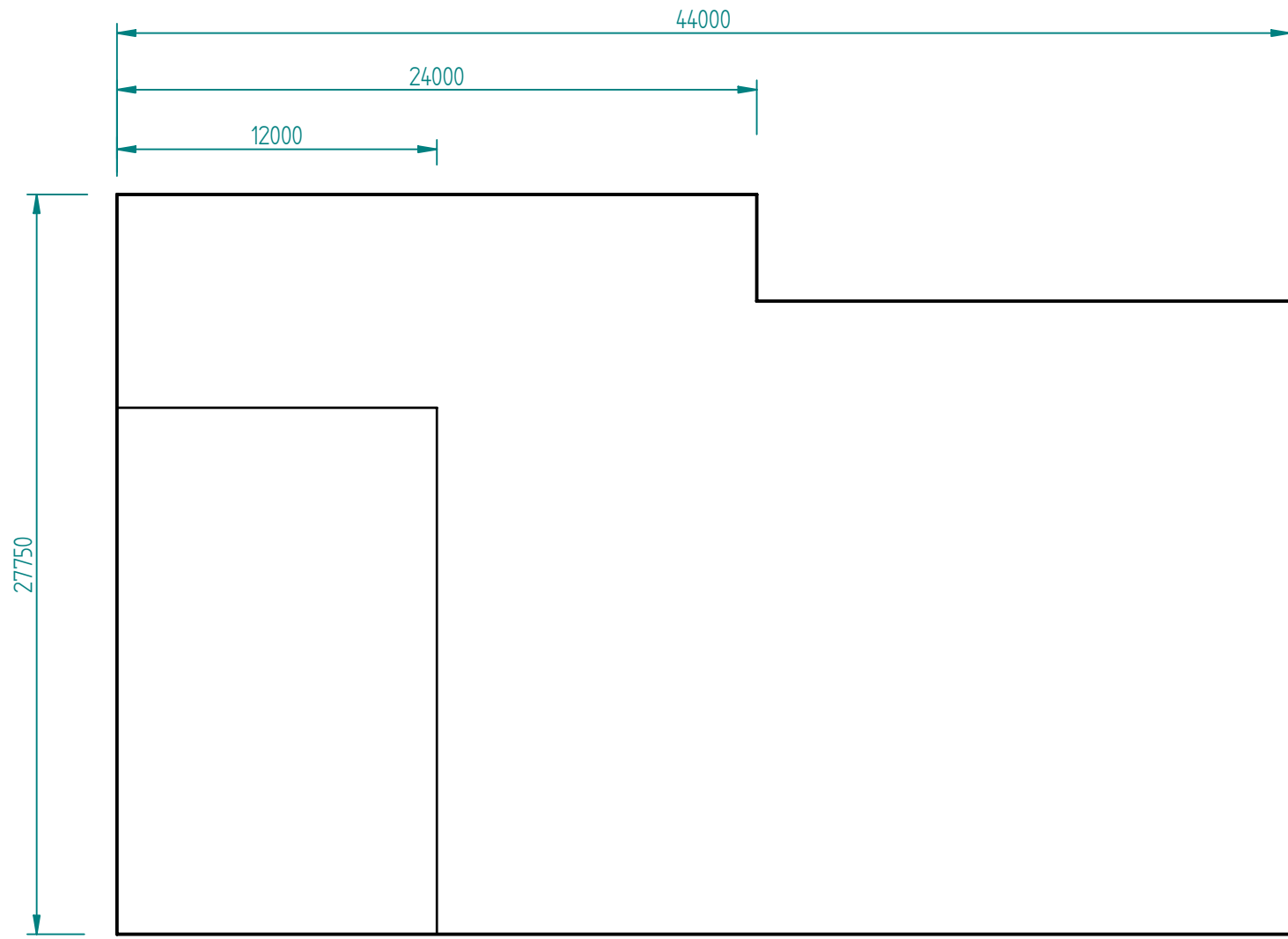


DESIGNED J SHERWOOD	APPROVED 24-11-2008 D DUTTON	 NATIONAL BIODIESEL PTY LTD CONTRACT No.	COPYRIGHT THIS DESIGN IS NOT TO BE COPIED OR AMENDED WITHOUT WRITTEN PERMISSION FROM NATIONAL BIODIESEL	SOYBEAN PROCESSING & BIODIESEL PRODUCTION FACILITY GENERAL ARRANGEMENT - SITE 3	DRAWING No. NB0100-3-A
DRAWN J SHERWOOD	ACCEPTED				DRAFT DRAWING STATUS PRELIMINARY FOR REVIEW
VERIFIED	APP'D DATE				PROJECT

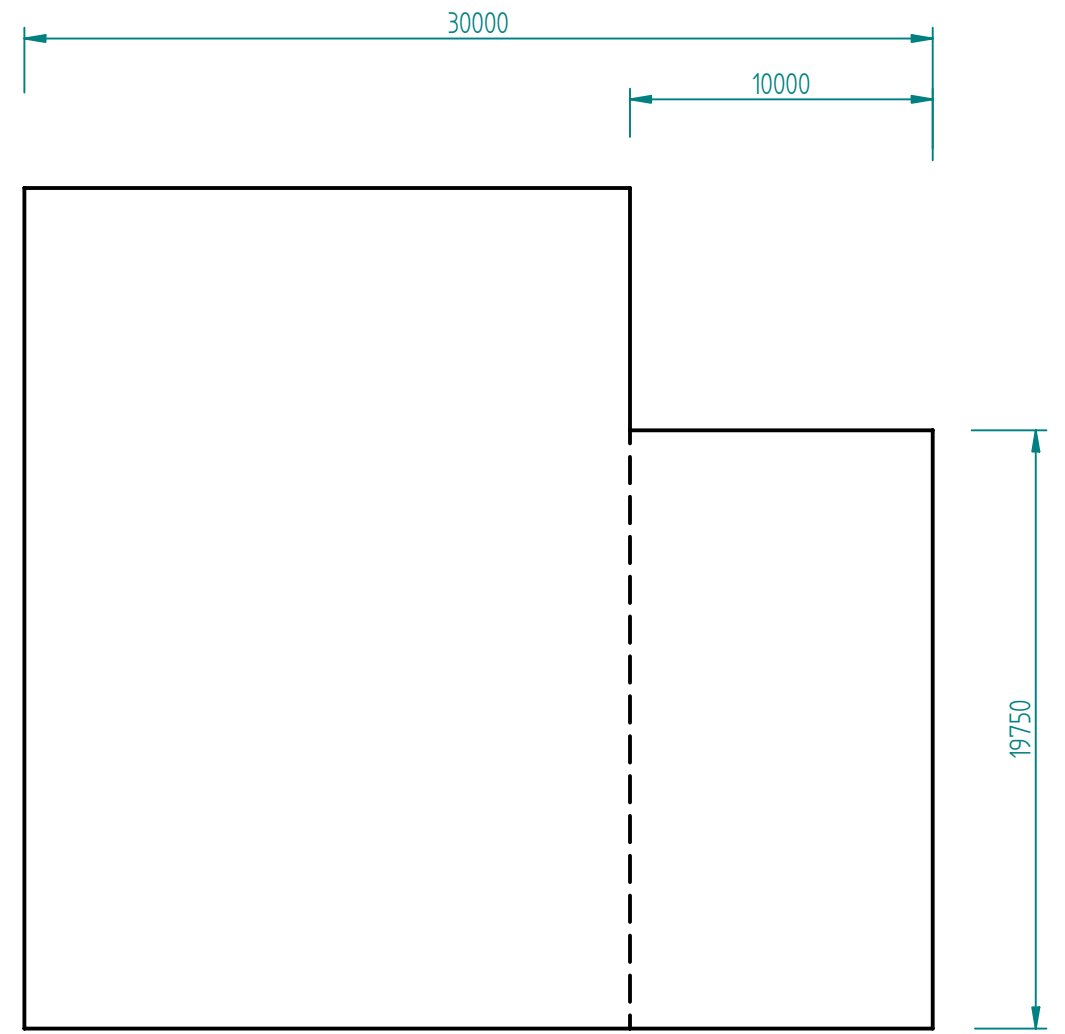


DESIGNED J SHERWOOD	DRAWN J SHERWOOD		COPYRIGHT THIS DESIGN IS NOT TO BE COPIED OR AMENDED WITHOUT WRITTEN PERMISSION FROM NATIONAL BIODIESEL	SOYBEAN PROCESSING & BIODIESEL PRODUCTION FACILITY GENERAL ARRANGEMENT	DRAWING No. NB0100-0-A
					DRAFT DRAWING STATUS PRELIMINARY FOR REVIEW
DETAILS OF AMENDMENT APP'D DATE	ACCEPTED 27-11-2008 CONTRACT No.	PROJECT NB01	SCALE AS SHOWN	A1	A


REVISION HISTORY			
REV	DESCRIPTION	DATE	APPROVED



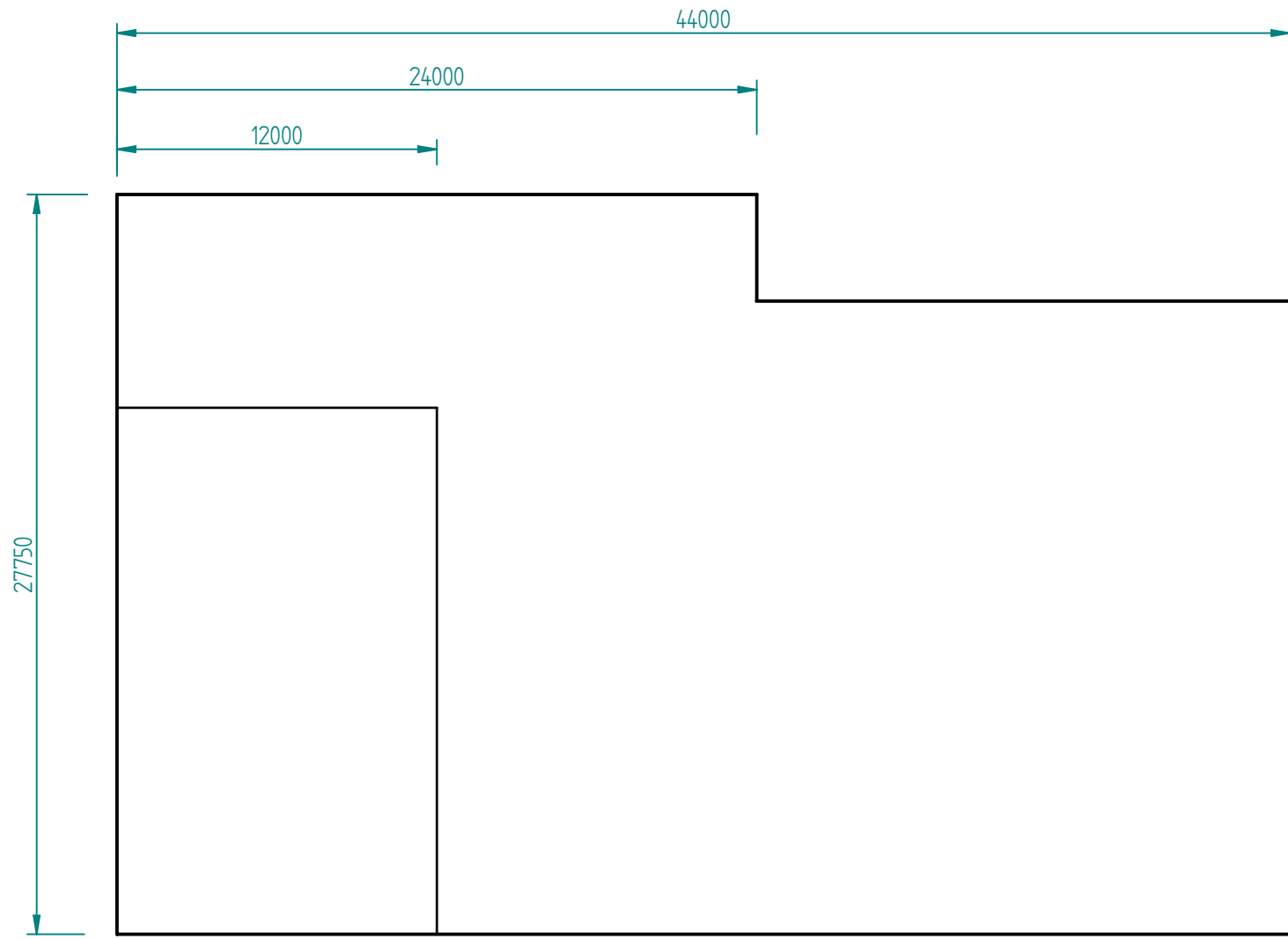
FRONT



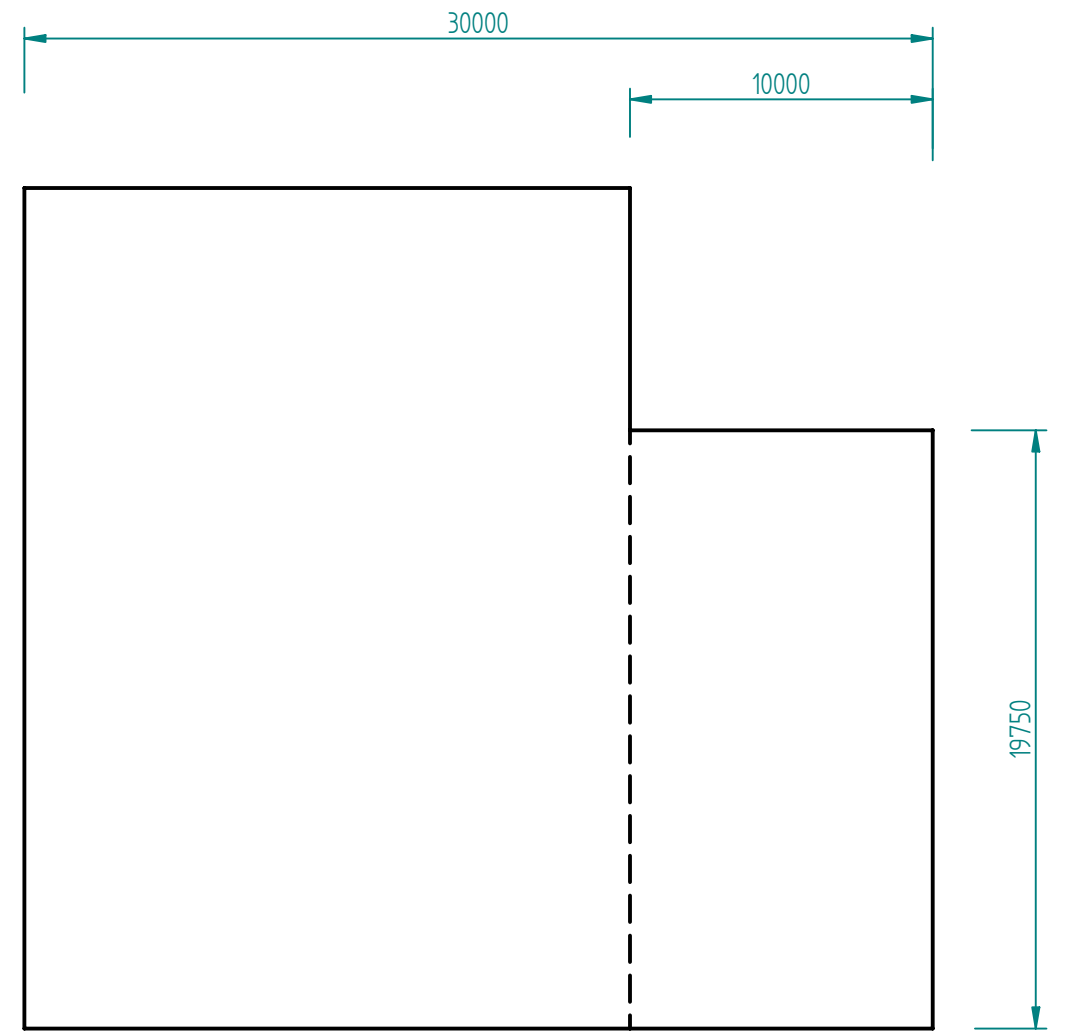
SIDE

	NAME	DATE	 A MEMBER OF THE NATIONAL BIOFUELS GROUP PTY LTD
DRAWN	natpc10	12/03/08	
CHECKED			
ENG APPR			
MGR APPR			
UNLESS OTHERWISE SPECIFIED DIMENSIONS ARE IN MILLIMETERS ANGLES ±X.X° 2 PL ±X.XX 3 PL ±X.XXX			TITLE EXTRACTION - ELEVATIONS
SIZE	DWG NO	REV	
A3	NB010206-01	1	
PROJECT: PT KEMBLA CRUSHING & BIODIESEL FACILITY			
SCALE: 1:250	WEIGHT:		


REVISION HISTORY			
REV	DESCRIPTION	DATE	APPROVED



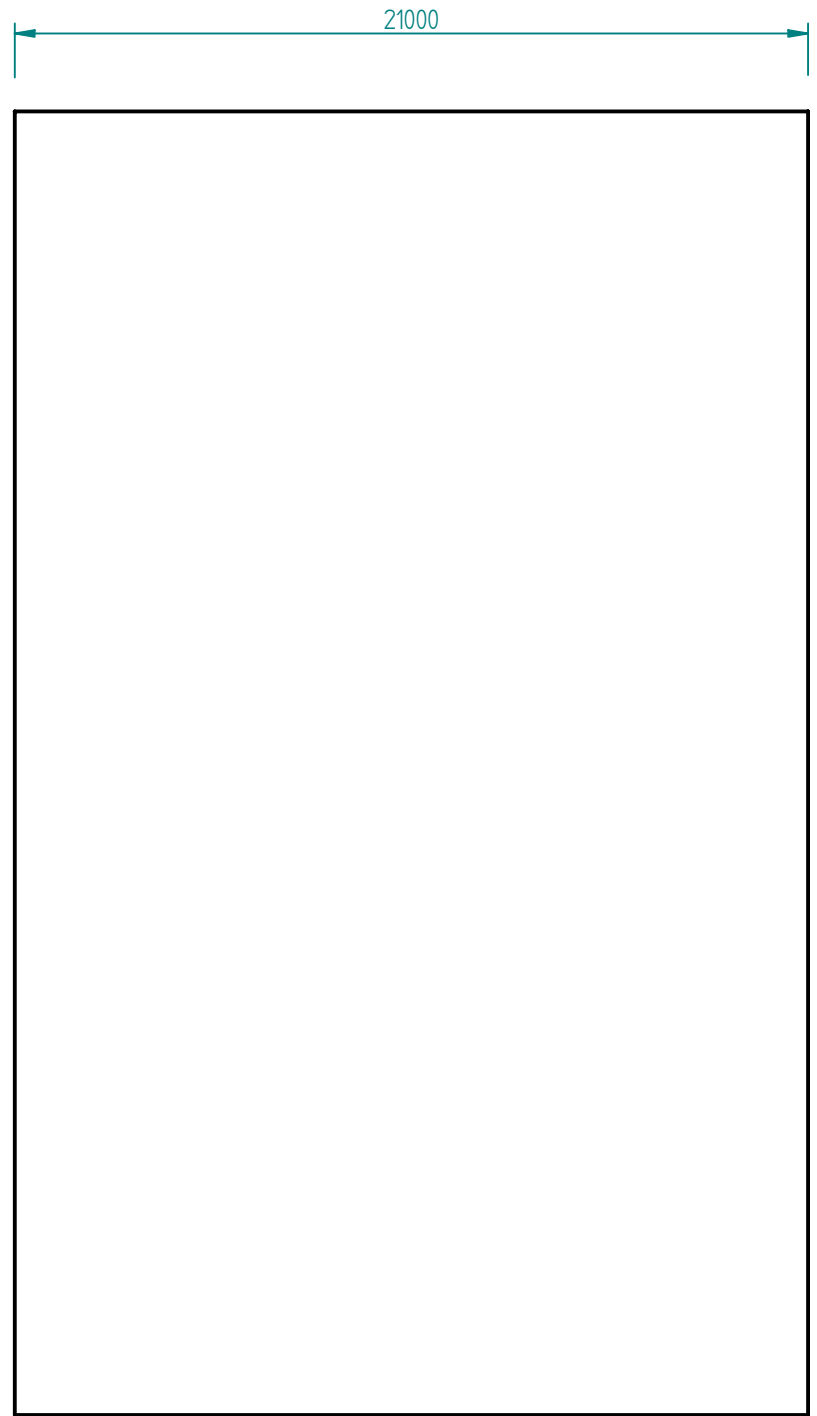
FRONT



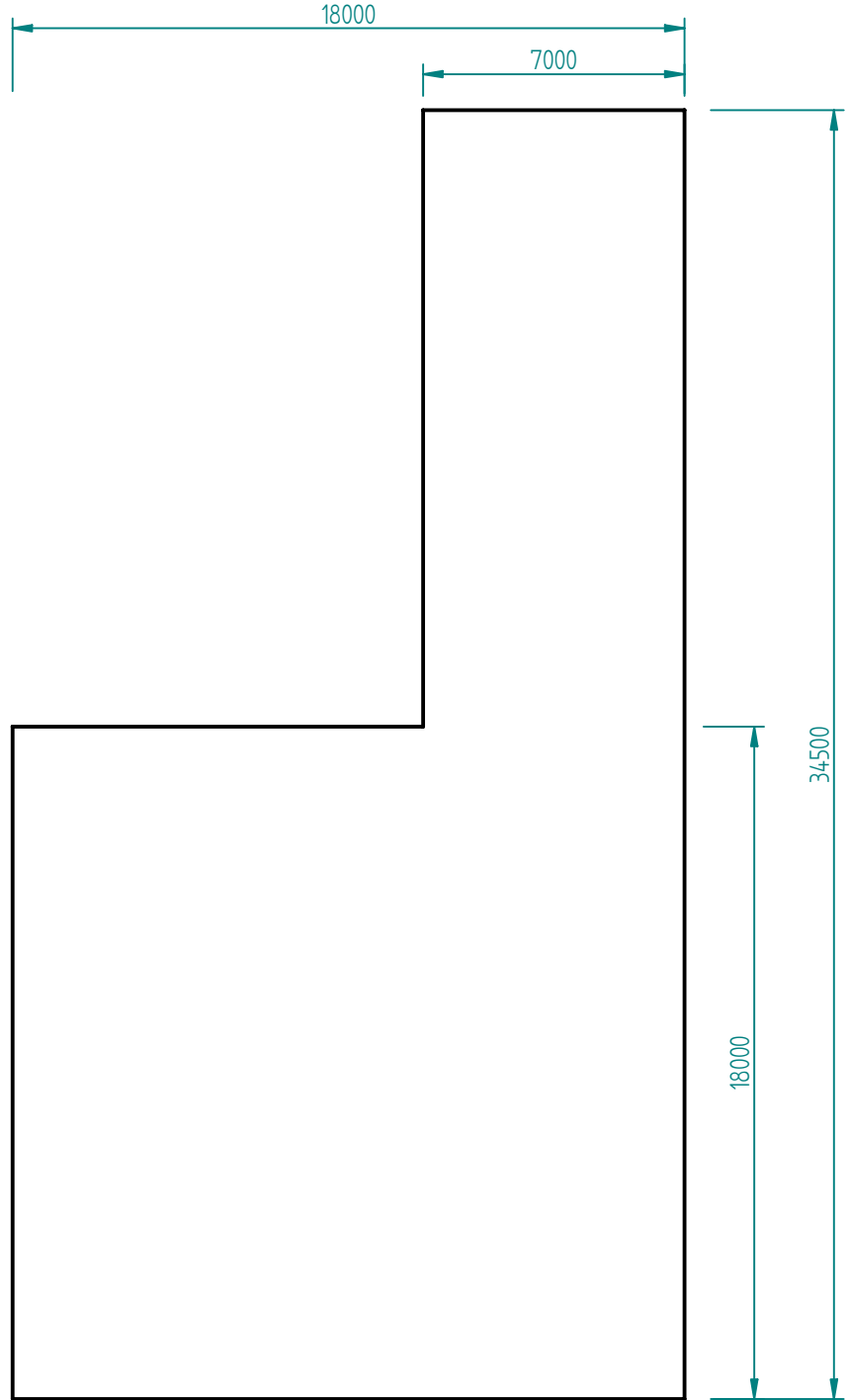
SIDE

	NAME	DATE	 A MEMBER OF THE NATIONAL BIOFUELS GROUP PTY LTD
DRAWN	natpc10	12/03/08	
CHECKED			
ENG APPR			
MGR APPR			
UNLESS OTHERWISE SPECIFIED DIMENSIONS ARE IN MILLIMETERS ANGLES ±X.X° 2 PL ±X.XX 3 PL ±X.XXX			TITLE EXTRACTION - ELEVATIONS
SIZE	DWG NO	REV	
A3	NB010206-01	1	
PROJECT: PT KEMBLA CRUSHING & BIODIESEL FACILITY			
SCALE: 1:250	WEIGHT:		


REVISION HISTORY			
REV	DESCRIPTION	DATE	APPROVED



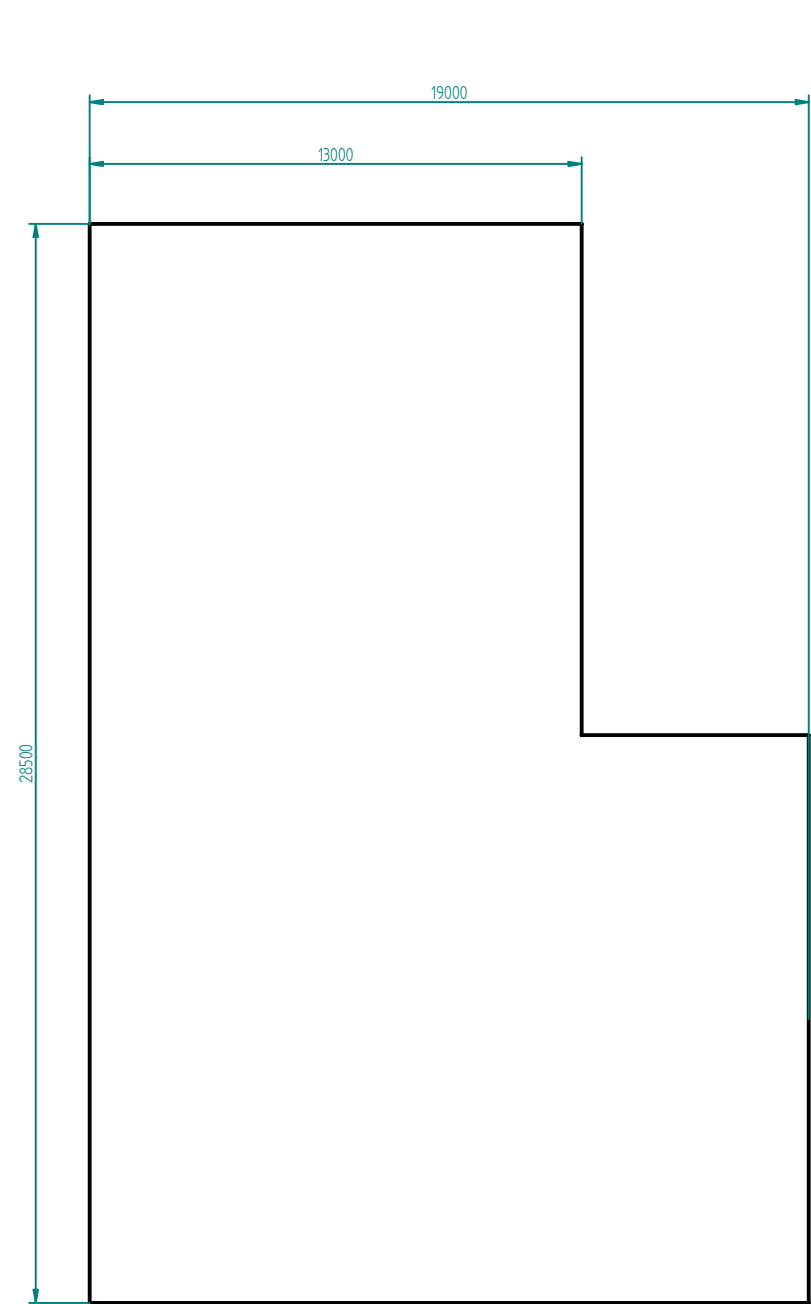
FRONT VIEW



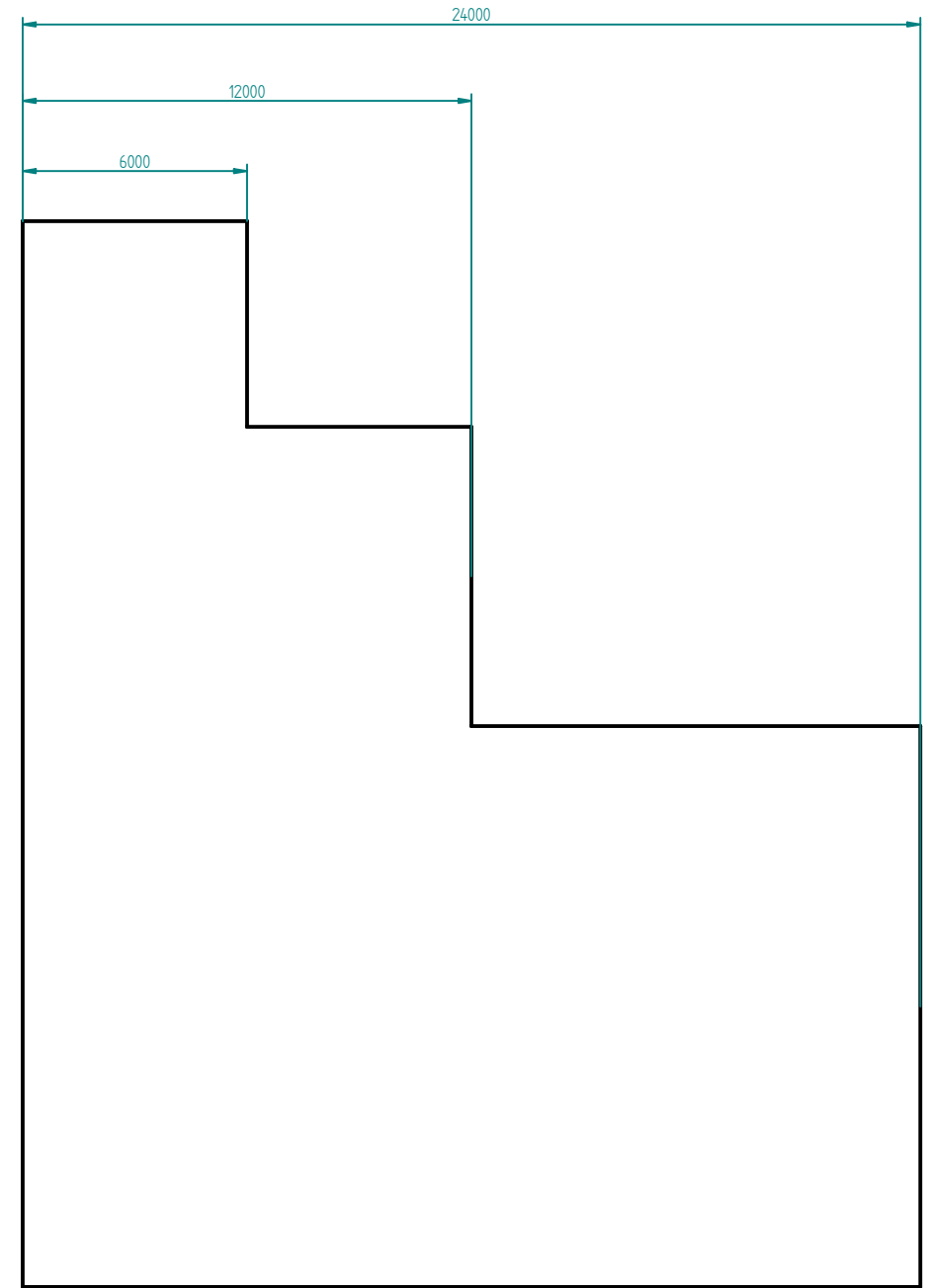
SIDE VIEW

	NAME	DATE	 A MEMBER OF THE NATIONAL BIOFUELS GROUP PTY LTD
DRAWN	J.SHERWOOD	12/03/08	
CHECKED			
ENG APPR			
MGR APPR			TITLE GLYCERINE REFINING - ELEVATION PROFILE
UNLESS OTHERWISE SPECIFIED DIMENSIONS ARE IN MILLIMETERS ANGLES ±X.X° 2 PL ±X.XX 3 PL ±X.XXX			SIZE A3 DWG NO NBO10506-01 PROJECT: PT KEMBLA CRUSHING & BIODIESEL FACILITY SCALE: 1:200 WEIGHT: SHEET 1 OF 1
			REV 1

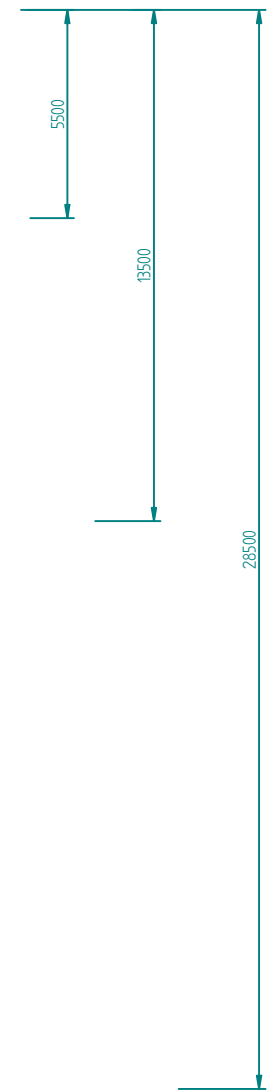
REVISION HISTORY			
REV	DESCRIPTION	DATE	APPROVED




FRONT VIEW

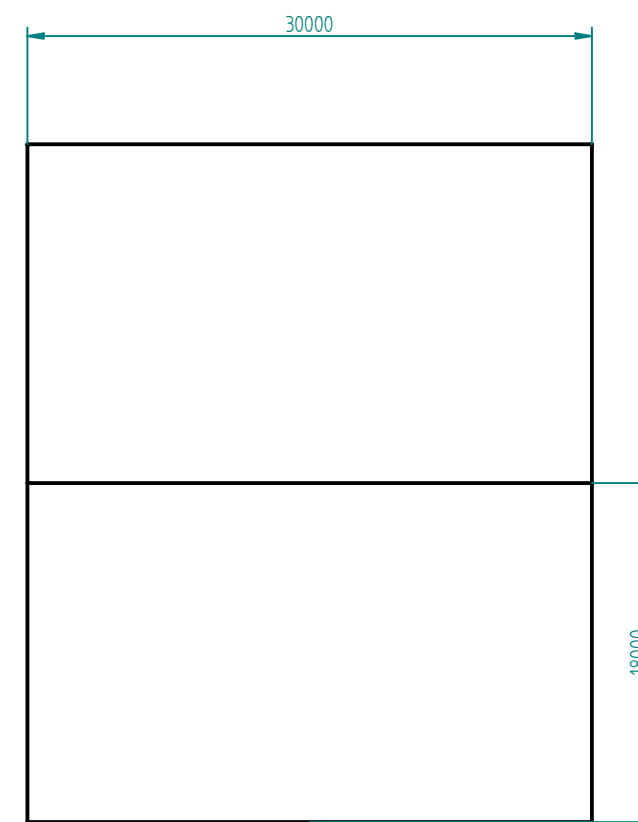
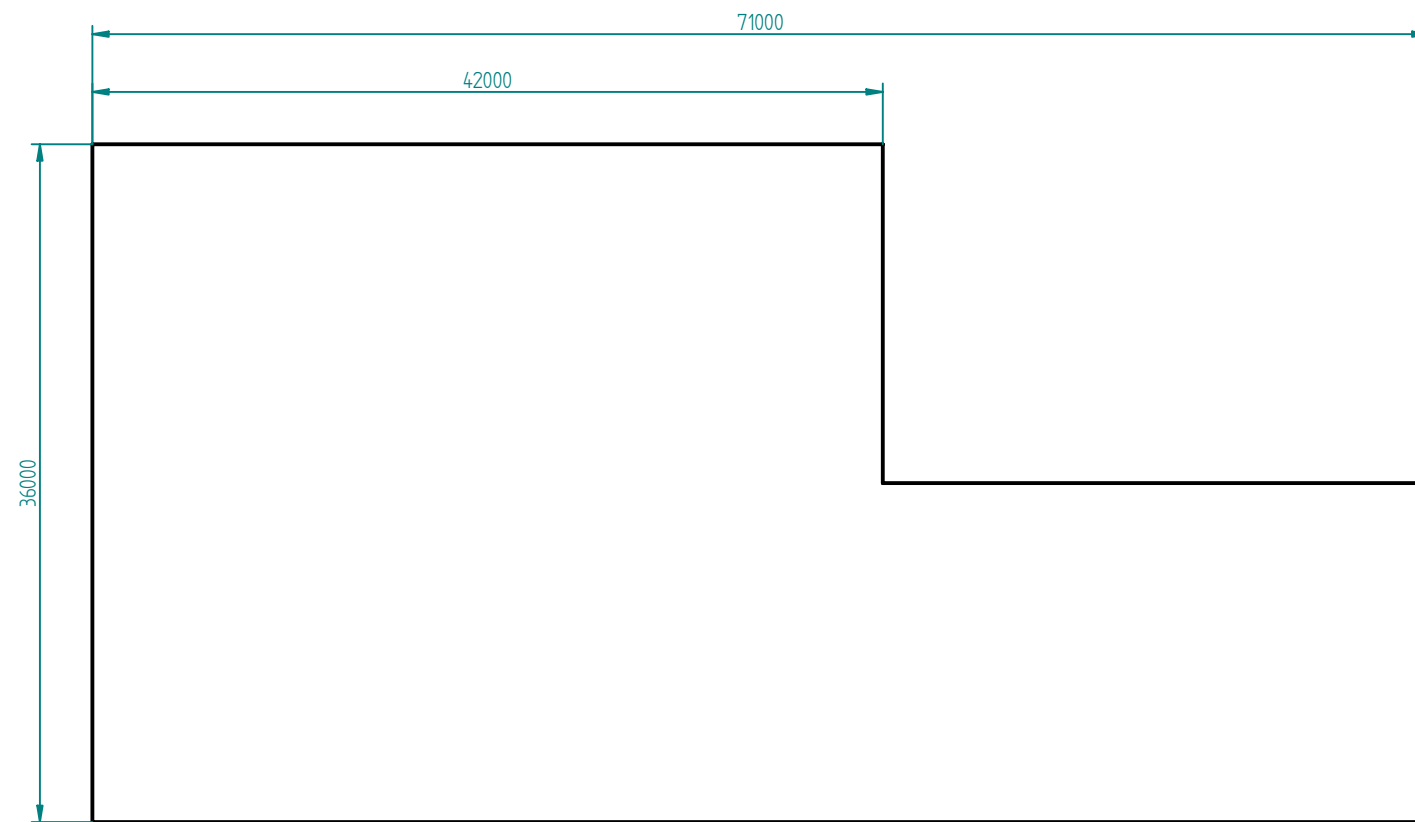


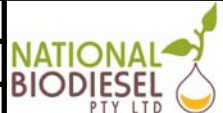
SIDE VIEW



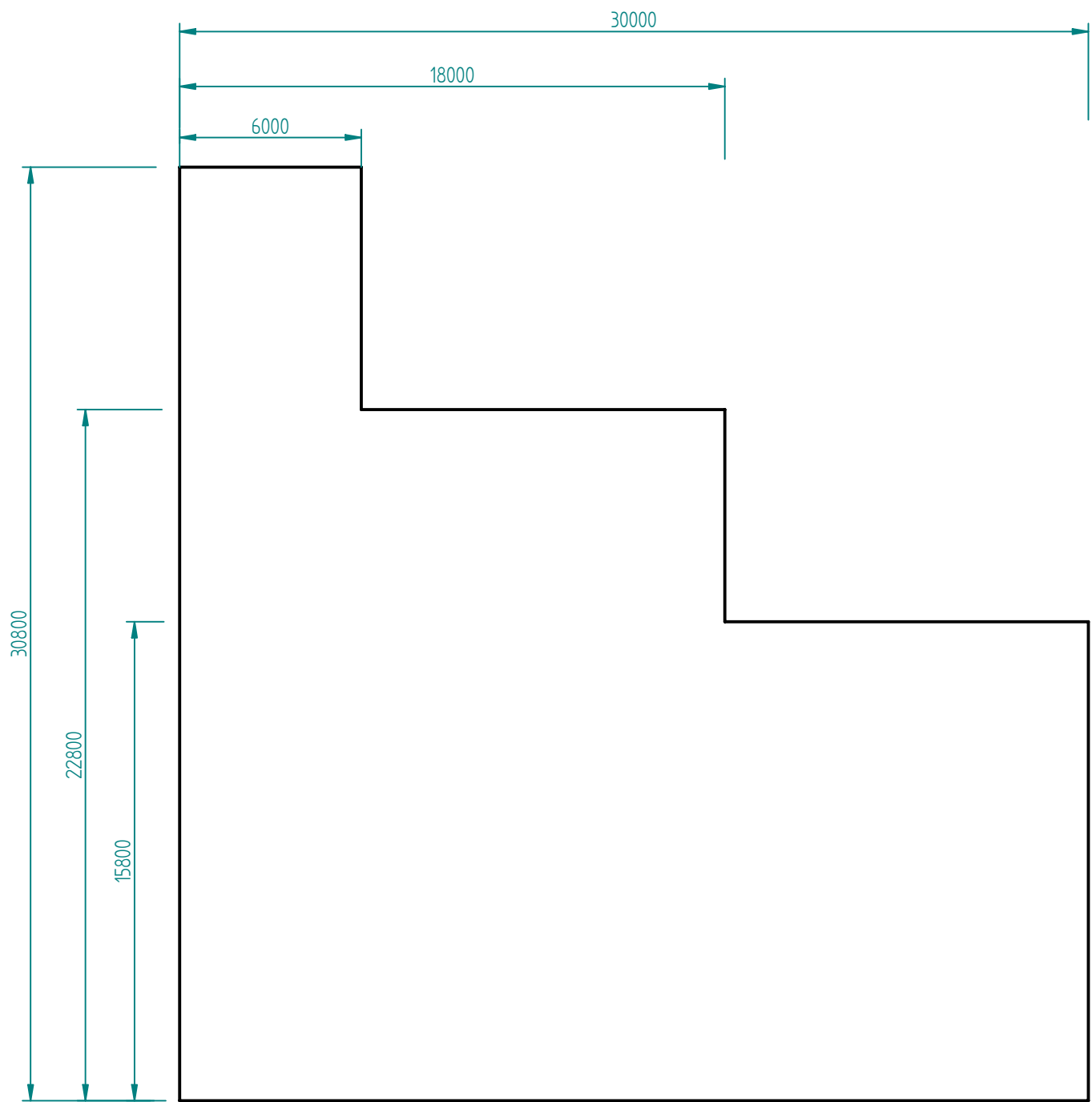
	NAME	DATE	 A MEMBER OF THE NATIONAL BIOFUELS GROUP PTY LTD
DRAWN	J. SHERWOOD	12/03/08	
CHECKED			
ENG APPR			
MGR APPR			TITLE
UNLESS OTHERWISE SPECIFIED DIMENSIONS ARE IN MILLIMETERS ANGLES ±X.X° 2 PL ±X.XX 3 PL ±X.XXX			PRETREATMENT - ELEVATION PROFILE
SIZE	DWG NO	REV	
A3	NB010306-01	1	
PROJECT: PT KEMBLA CRUSHING & BIODIESEL FACILITY			
SCALE: 1:200	WEIGHT:	SHEET 1 OF 1	

REVISION HISTORY			
REV	DESCRIPTION	DATE	APPROVED

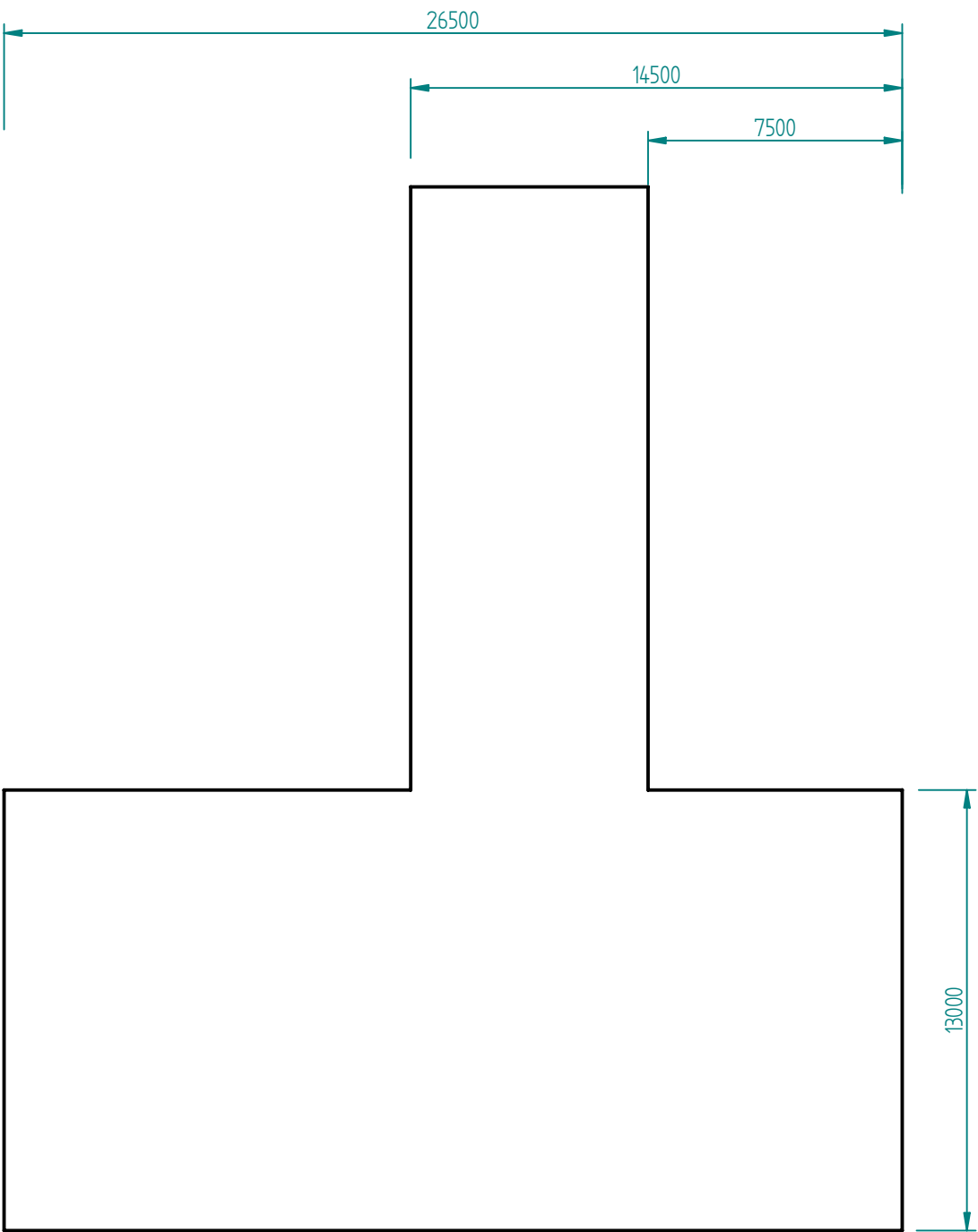


	NAME	DATE	 A MEMBER OF THE NATIONAL BIOFUELS GROUP PTY LTD	
DRAWN	J.SHERWOOD	17/03/08		
CHECKED				
ENG APPR				
MGR APPR			TITLE PREPARATIONS - ELEVATION PROFILE	
UNLESS OTHERWISE SPECIFIED DIMENSIONS ARE IN MILLIMETERS ANGLES ±X.X° 2 PL ±X.XX 3 PL ±X.XXX			SIZE A3 DWG NO NB010106-01 SCALE: 1:400 WEIGHT:	REV 1 PROJECT: PT KEMBLA CRUSHING & BIODIESEL FACILITY SHEET 1 OF 1


REVISION HISTORY			
REV	DESCRIPTION	DATE	APPROVED



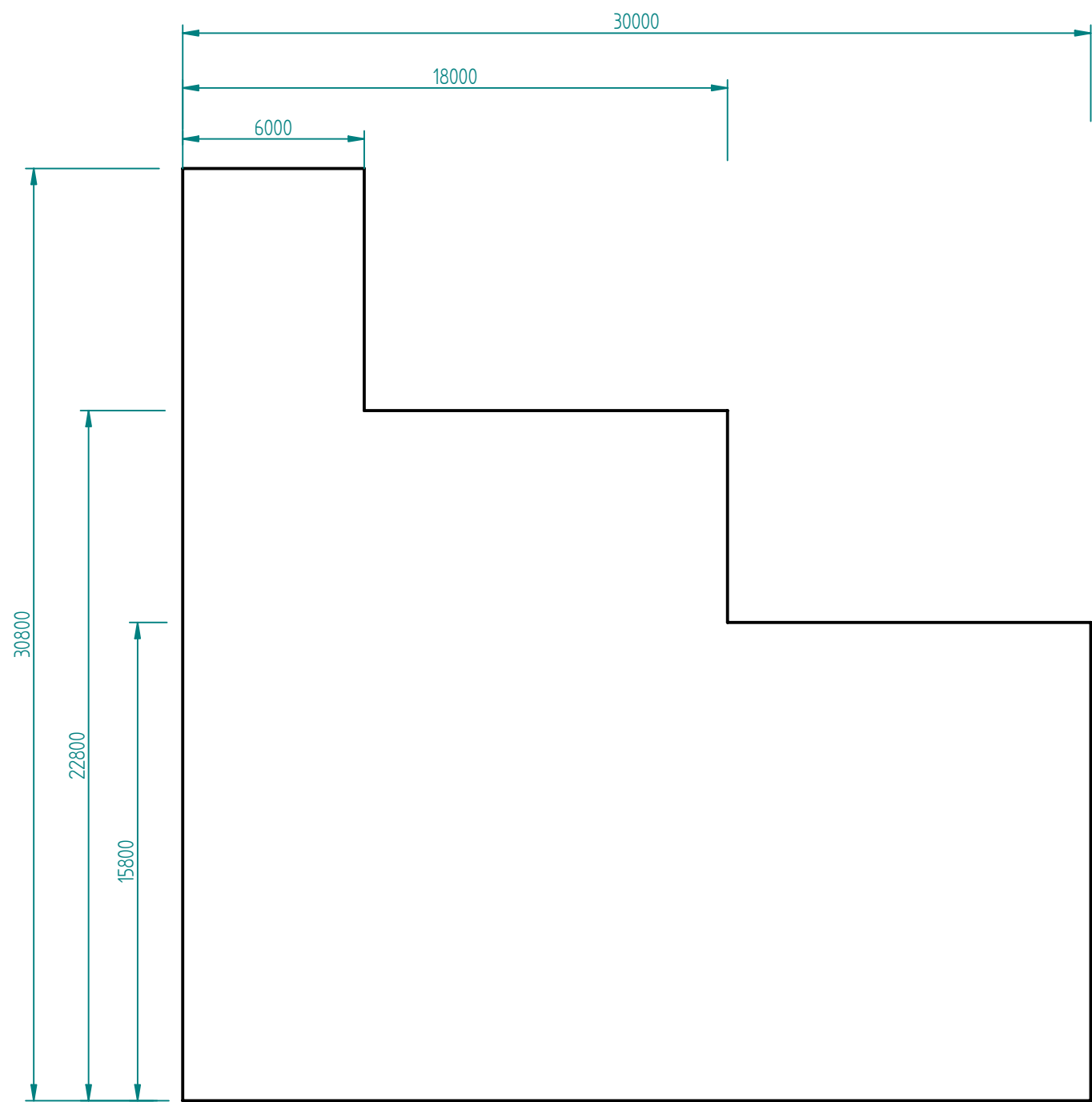
FRONT VIEW



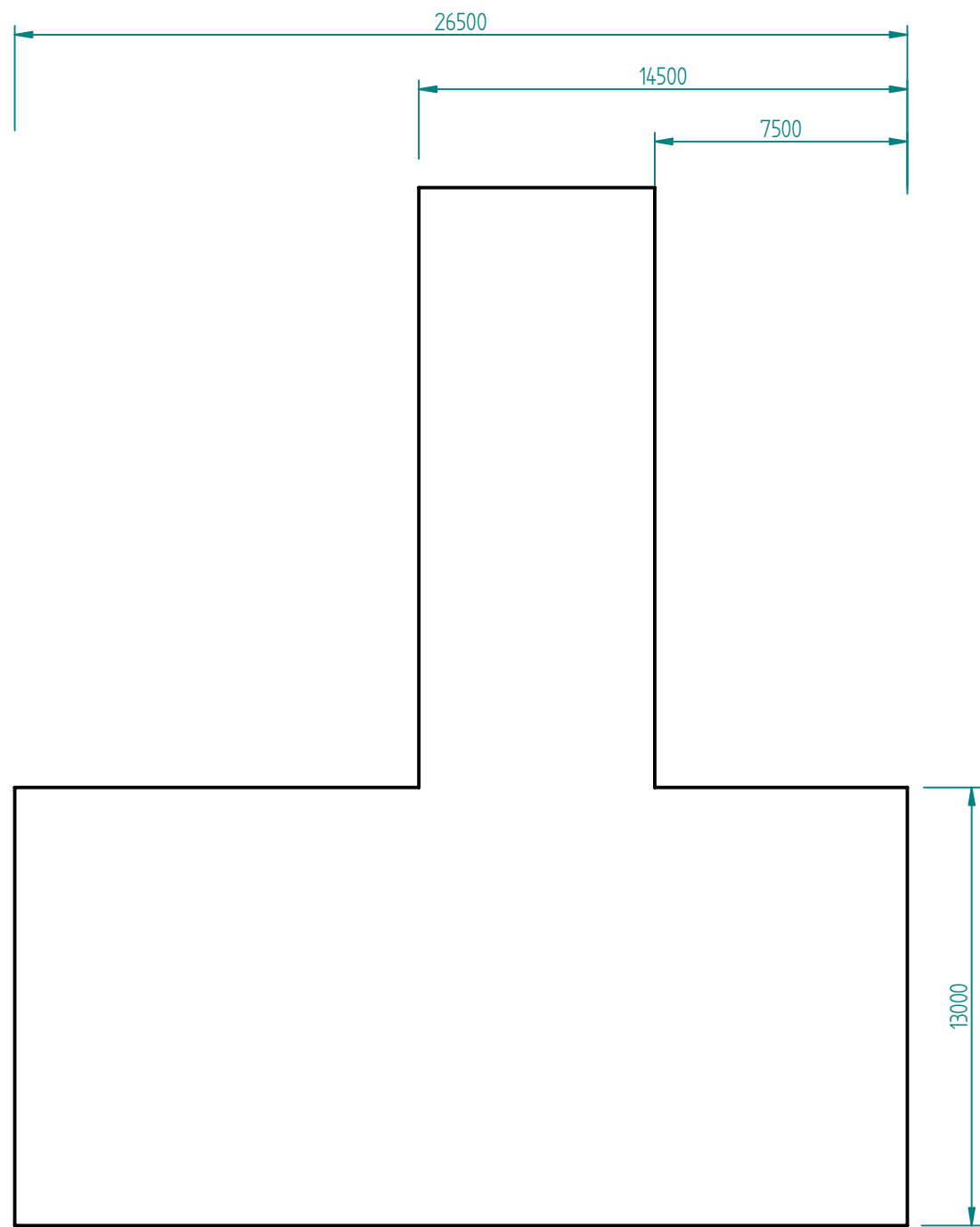
SIDE VIEW

	NAME	DATE	 A MEMBER OF THE NATIONAL BIOFUELS GROUP PTY LTD
DRAWN	J.SHERWOOD	12/03/08	
CHECKED			
ENG APPR			
MGR APPR			TITLE
UNLESS OTHERWISE SPECIFIED DIMENSIONS ARE IN MILLIMETERS ANGLES ±X.X° 2 PL ±X.XX 3 PL ±X.XXX			BIODIESEL REFINERY – ELEVATION PROFILE
SIZE	DWG NO		REV
A3	NB010406-01		1
PROJECT: PT KEMBLA CRUSHING & BIODIESEL FACILITY			
SCALE:	WEIGHT:	SHEET 1 OF 1	


REVISION HISTORY			
REV	DESCRIPTION	DATE	APPROVED



FRONT VIEW



SIDE VIEW

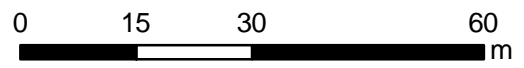
	NAME	DATE	 A MEMBER OF THE NATIONAL BIOFUELS GROUP PTY LTD
DRAWN	J.SHERWOOD	12/03/08	
CHECKED			
ENG APPR			
MGR APPR			TITLE BIODIESEL REFINERY - ELEVATION PROFILE
UNLESS OTHERWISE SPECIFIED DIMENSIONS ARE IN MILLIMETERS ANGLES ±X.X° 2 PL ±X.XX 3 PL ±X.XXX			SIZE A3 DWG NO NBO10406-01 PROJECT: PT KEMBLA CRUSHING & BIODIESEL FACILITY SCALE: WEIGHT: SHEET 1 OF 1
		REV 1	

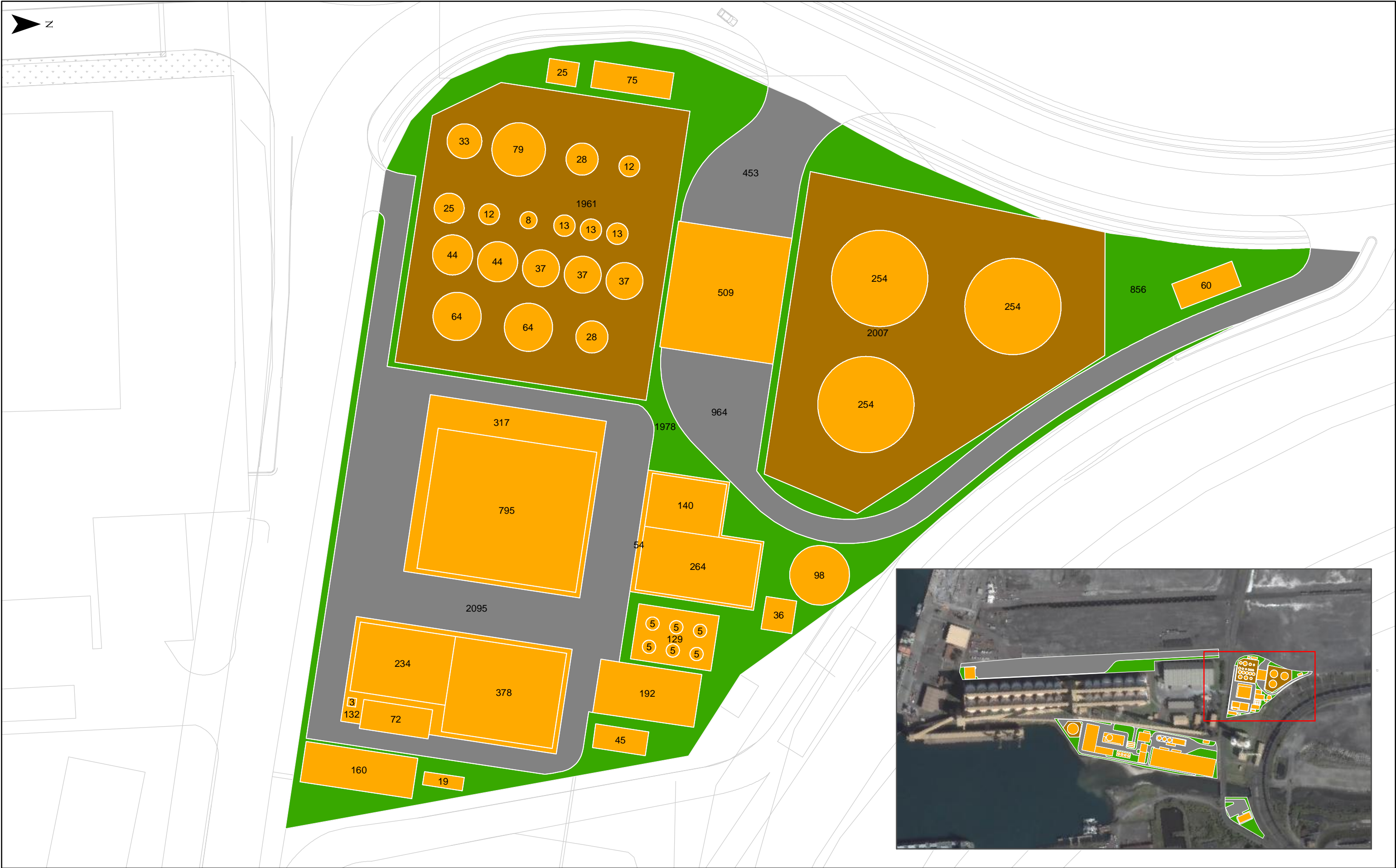


- Structure (477 m²)
- Paved (1792 m²)
- Bunded area (0 m²)
- Landscaped (2018 m²)



- Structure (13513 m²)
- Paved (9543 m²)
- Bunded area (726 m²)
- Landscaped (7280 m²)

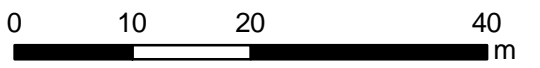




- Structure footprint (5120 m²)
- Paved (3512 m²)
- Banded area (3968 m²)
- Landscaped (2834 m²)

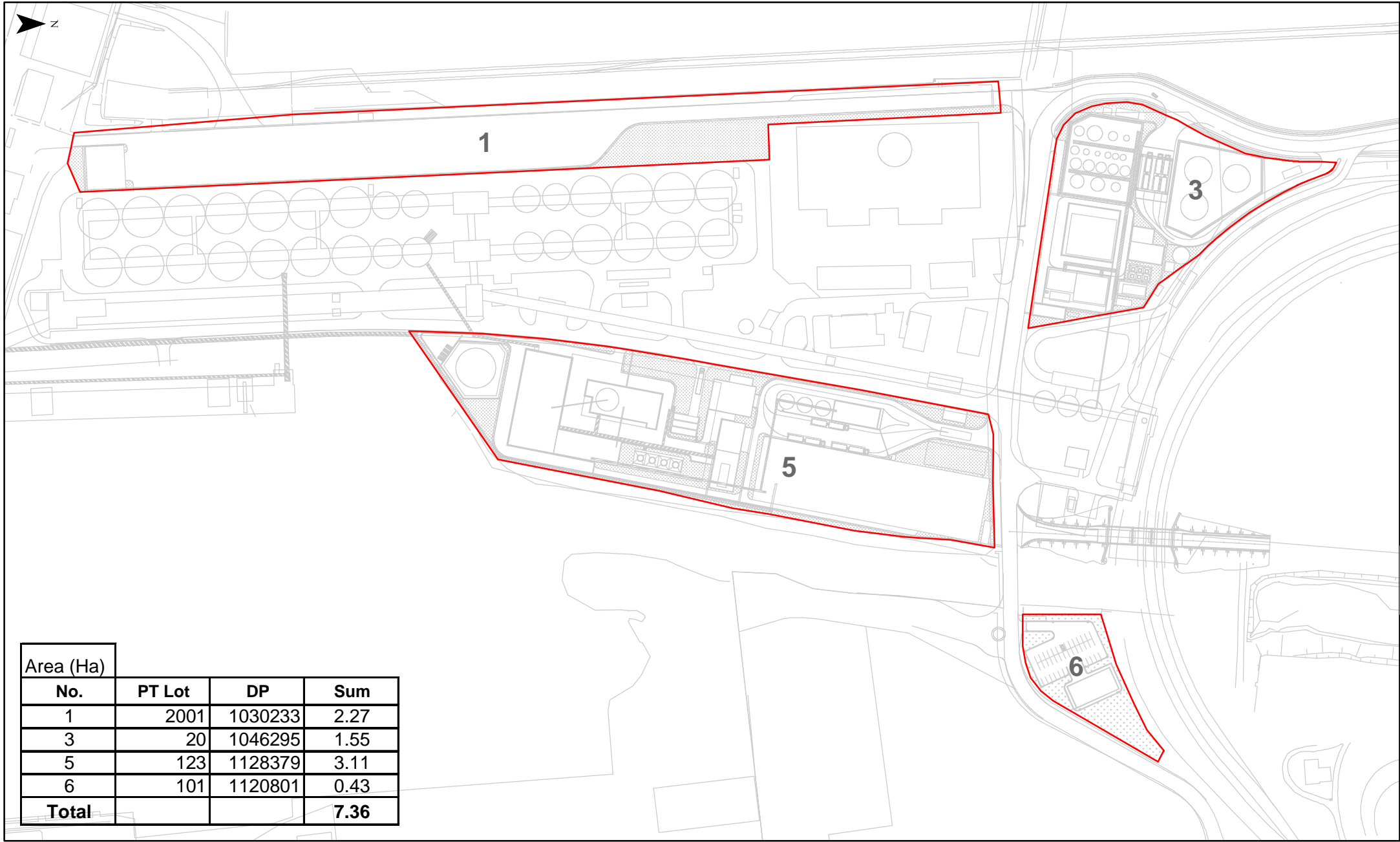
SOYBEAN PROCESSING AND BIODIESEL PRODUCTION FACILITY
AREAS - SITE 3
 Source: National Biodiesel Pty Ltd

SEPT 2008
 60042651

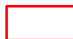




- Structure (700 m²)
- Paved (14071 m²)
- Banded area (0 m²)
- Landscaped (4382 m²)



Area (Ha)			
No.	PT Lot	DP	Sum
1	2001	1030233	2.27
3	20	1046295	1.55
5	123	1128379	3.11
6	101	1120801	0.43
Total			7.36

 Indicative site boundary for soybean processing and biodiesel refining facility

**SOYBEAN PROCESSING AND BIODIESEL PRODUCTION FACILITY
SITE BOUNDARY INDICATING LOT AND DEPOSITED PLAN NUMBERS**

SEPT 2008

60042651

Source: National Biodiesel Pty Ltd

0 25 50 100
m



Appendix E Bank Stabilisation Proposal: Preferred Option





LEGEND

DEFINES EXISTING SEWER LINES BASED ON SURVEY DATA

DEFINES PROPOSED SEWER LINES AND LEVELS

VOLUMES
FILL VOLUME = 9.460m³

BANK TO BE STABILISED WITH FILTER POINT MATTRASS REFER TO DRAWING G05 FOR DETAILS

BANK STABILISATION OPTION 3

DEVELOPMENT PLAN

GARUNGATY WATERWAY

PKPC

PREPARED FOR:

Goodmans
SURVEYORS, CIVIL ENGINEERS, PLANNING, SEWER & WATER, LAND DEVELOPMENT CONSULTANTS

Goodmans
16/8 N. 50 (03) 554 0261
Suite 5/2 20 BELLAIRBOURNE RD, WHEELERS 3228
Ph: (03) 4286 1035 Fax: (03) 4287 1183

DESIGNED BY: D. HARRISON
REVIEWED BY: GS
DRAWING / FILE NO.: 111497 G01
SHEET 1 OF 5

No	Subject	Date	Initial
B	PIPE NOTE AMENDED	8.7.08	DH
A	ORIGINAL ISSUE	14.6.08	DH

AMENDMENTS

This drawing is copyright to Goodmans Pty Ltd. No part of this drawing including the whole or part of the same shall be used for any other purpose nor by any other person nor by any third party without the prior written consent of Goodmans Pty Ltd.