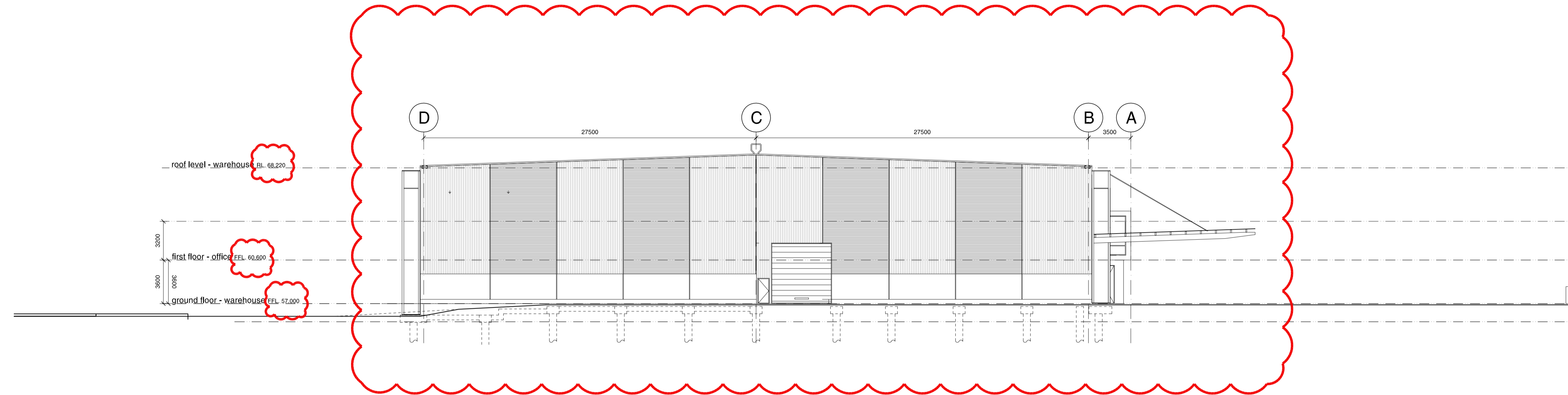


Check all dimensions and site conditions prior to commencement of any work, the purchase or ordering of any materials, fittings, plant, services or equipment and the preparation of shop drawings and/or the fabrication of any components.  
 Do not scale drawings - refer to figured dimensions only. Any discrepancies shall immediately be referred to the architect for clarification.  
 All drawings may not be reproduced or distributed without prior permission from the architect.

**NOT FOR CONSTRUCTION**

**MATERIAL + FINISHES CODE:**

- RS-01 ROLLER SHUTTER
- PR-01 PRECAST CONCRETE PANEL
- CL-01 PROFILED METAL CLADDING ZINCALUME
- CL-02 COMPOSITE ALUMINIUM CLADDING
- CL-03 PROFILED ACRYLIC SHEETING
- GL-01 CLEAR VISION GLASS
- PC-01 EXTERNAL PAINT ON STEEL- COLOUR: DARK CHARCOAL
- OC-01 OFF FORM CONCRETE
- CR-01 RENDERED BLOCKWORK
- EW-01 EXTERNAL WALL SYSTEM  
DOUBLE CLEAR GLAZING INTO TIMBER FRAMING  
SECTIONS AND ALUMINIUM CAPS.  
HORIZONTAL HARWOOD SPANDREL PANELS
- EW-02 EXTERNAL WALL SYSTEM  
DOUBLE CLEAR GLAZING INTO TIMBER FRAMING  
SECTIONS AND ALUMINIUM CAPS.



01 North Elevation  
Warehouse & Warehouse Office 1:200



Rev.	Date	Description	Initial	Checked
B	20/02/2009	Section 75W APPLICATION	WK	RM
A	30/06/2008	PART 3A APPLICATION		MD
P3	20/06/2008	PRELIMINARY D.A. ISSUE		MD
P2	19/06/2008	PRELIMINARY CONSULTANT ISSUE		MD
P1	30/05/2008	PRELIMINARY CONSULTANT ISSUE		MD

**Sydney Water  
Potts Hill**  
  
**North + East Elevations  
Warehouse & Warehouse Office**

Scale: 1:200 @ A1 & 1:400 @ A3

Drawn: PL  
Project No.: S10955

Status: Development Application

Plot Date: 20/2/2009 5:59:26 PM

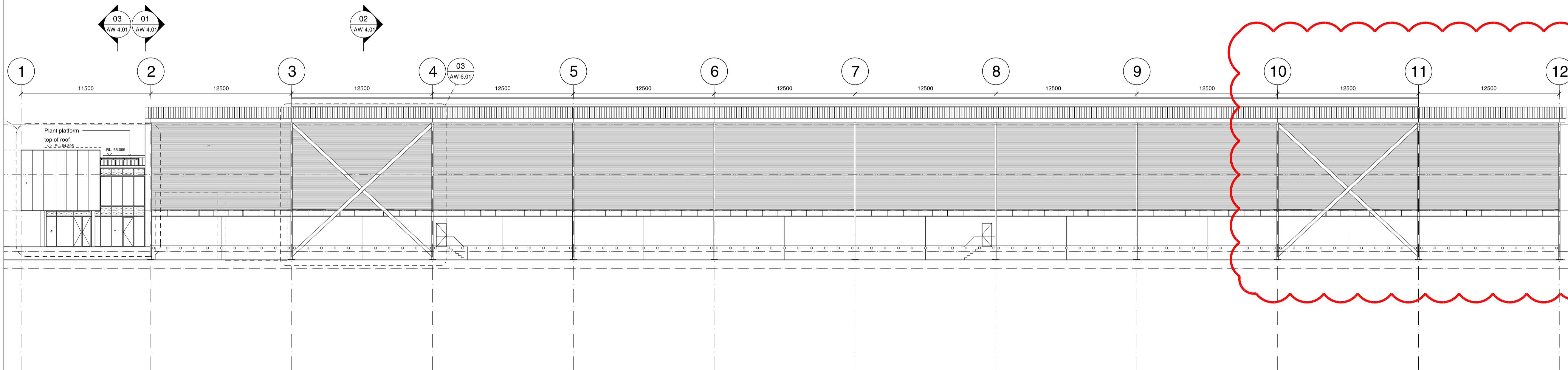
Plot File: O:\10900-10999\10955\_SWA\_POTTS\_HILL\00\_MAIN\CAD\PLOTS\DA\AR-DA-5.11.DWG

Drawing No. AR DA 5.11 revision B

**Sydney** 1/263 Liverpool Street  
East Sydney NSW 2010 Australia  
T 02 9380 7288 F 02 9380 7280  
email syd@batessmart.com.au  
http://www.batessmart.com.au

**Melbourne** 1 Nicholson Street  
Melbourne VIC 3000 Australia  
T 03 8664 6200 F 03 8664 6300  
email melb@batessmart.com.au  
http://www.batessmart.com.au

Bates Smart Pty Ltd ABN 70 004 999 400



01 East Elevation  
Warehouse & Warehouse Office 1:200