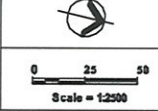


L_{Amax} Noise Contour Plots



70 mm ON ORIGINAL

3	07/3/10	General base	HL	AP
2	12/12/08	General base	HL	AP
1	15/10/08	General base	ALM	AP
0	15/11/07	General base	ALP	DM
REV.	DATE	AMENDMENT / ISSUE DESCRIPTION	PREPARED	CHECKED



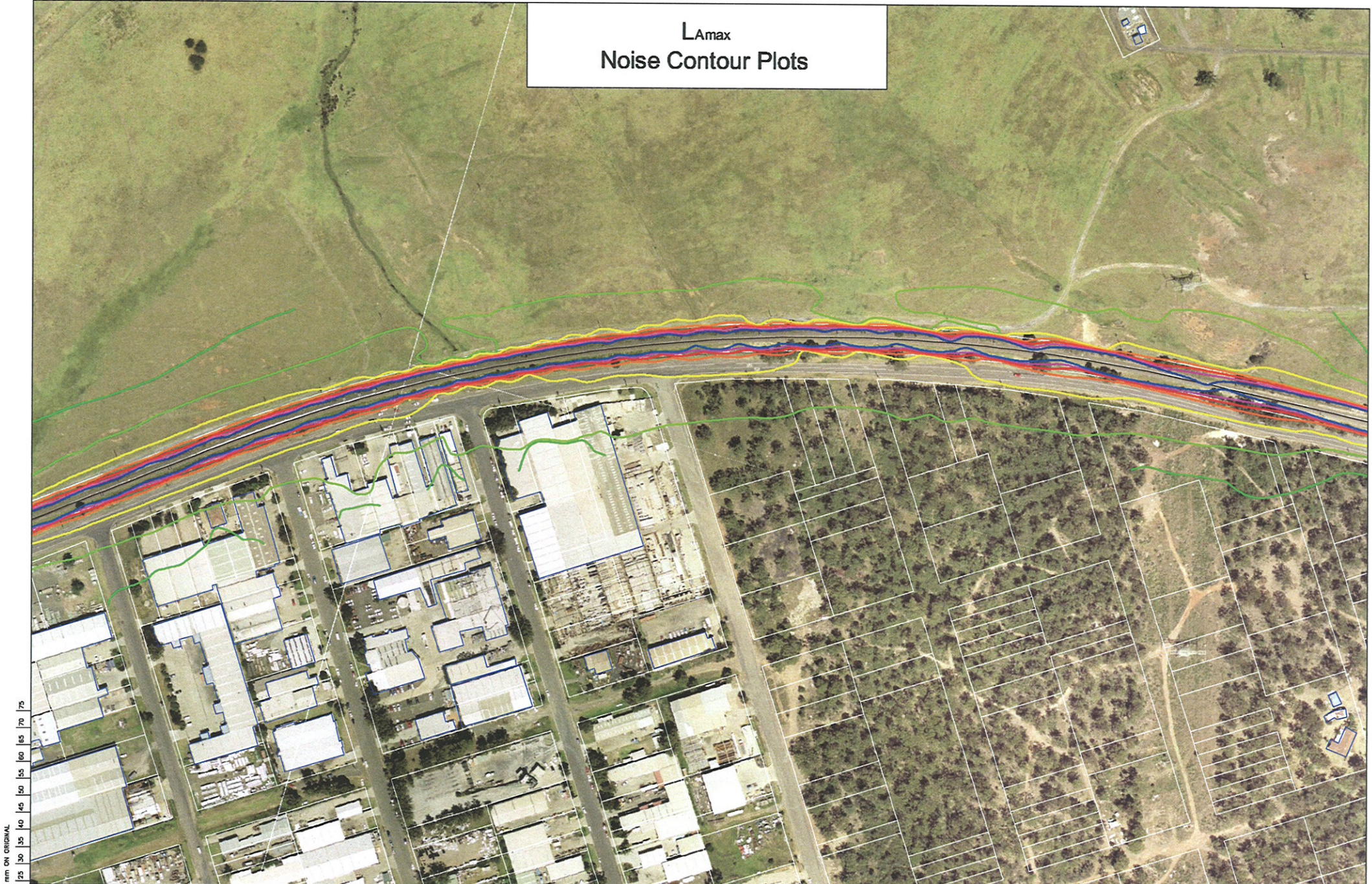
LEGEND:	
—	105 dBA L _{Amax}
—	100 dBA L _{Amax}
—	95 dBA L _{Amax}
—	90 dBA L _{Amax}
—	85 dBA L _{Amax}
—	80 dBA L _{Amax}
—	75 dBA L _{Amax}
—	70 dBA L _{Amax}

Heggles Pty Ltd
 2 Lincoln Street
 Lane Cove NSW 2080 Australia
 PO Box 176 Lane Cove NSW 1505
 Email address: sydney@heggles.com.au
 Telephone 02 9427 8100 Facsimile 02 9427 8200

10-5050 Quakers Hill to Vineyard Appendix G - Noise Contour Plots Existing Situation (Year 2007)	DRAWING No. 11-5151R3-G-118	REVISION 3
---	--------------------------------	---------------

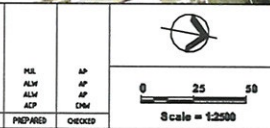
FILE NAME
10-5050 Appendix G 2007 L_{Amax}20080317.dwg

L_{Amax} Noise Contour Plots



75 mm ON ORIGINAL
15
10
5
0

3	10/13/14	General Issue	MEL	AP
2	13/10/16	General Issue	ALM	AP
1	15/10/16	General Issue	ALM	AP
1	12/12/17	General Issue	ALP	DM
REV.	DATE	REVISION / ISSUE DESCRIPTION	PREPARED	CHECKED



LEGEND:	
	105 dBA L _{Amax}
	100 dBA L _{Amax}
	95 dBA L _{Amax}
	90 dBA L _{Amax}
	85 dBA L _{Amax}
	80 dBA L _{Amax}
	75 dBA L _{Amax}
	70 dBA L _{Amax}



Heggles Pty Ltd
 2 Lincoln Street
 Lane Cove NSW 2009 Australia
 PO Box 176 Lane Cove NSW 1505
 Email address: sydney@heggles.com.au
 Telephone 02 9427 8100 Facsimile 02 9427 8200

FILE NAME 10-5050 Appendix G 2007 L _{Amax} .20000217.dwg	DRAWING NO. 11-5151R3-G-109	REVISION 3
--	--------------------------------	---------------