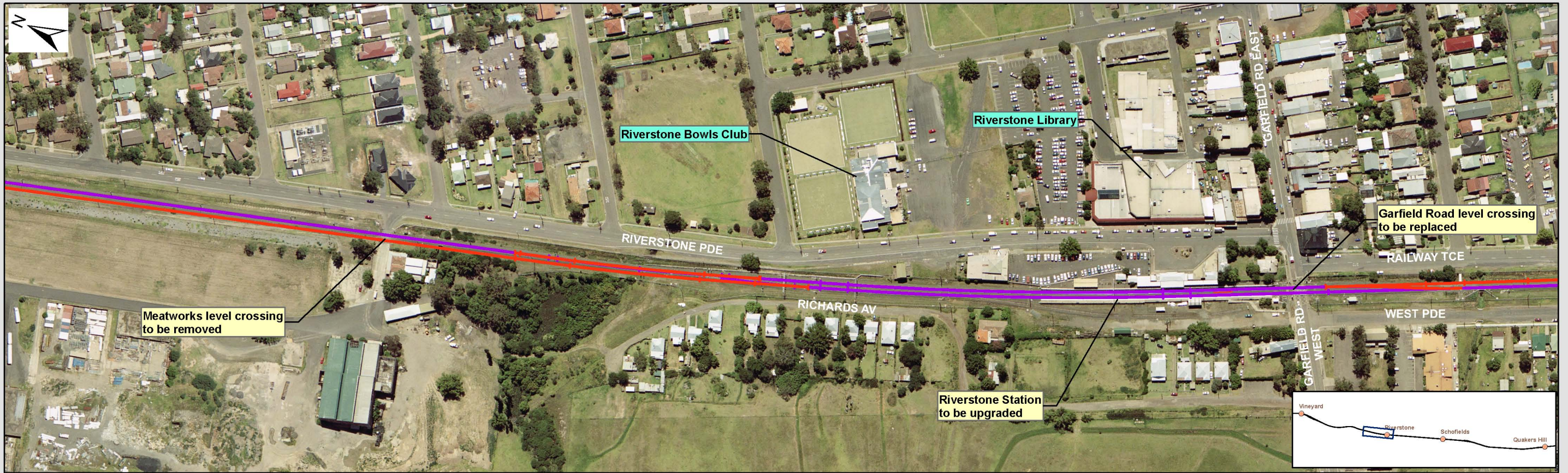


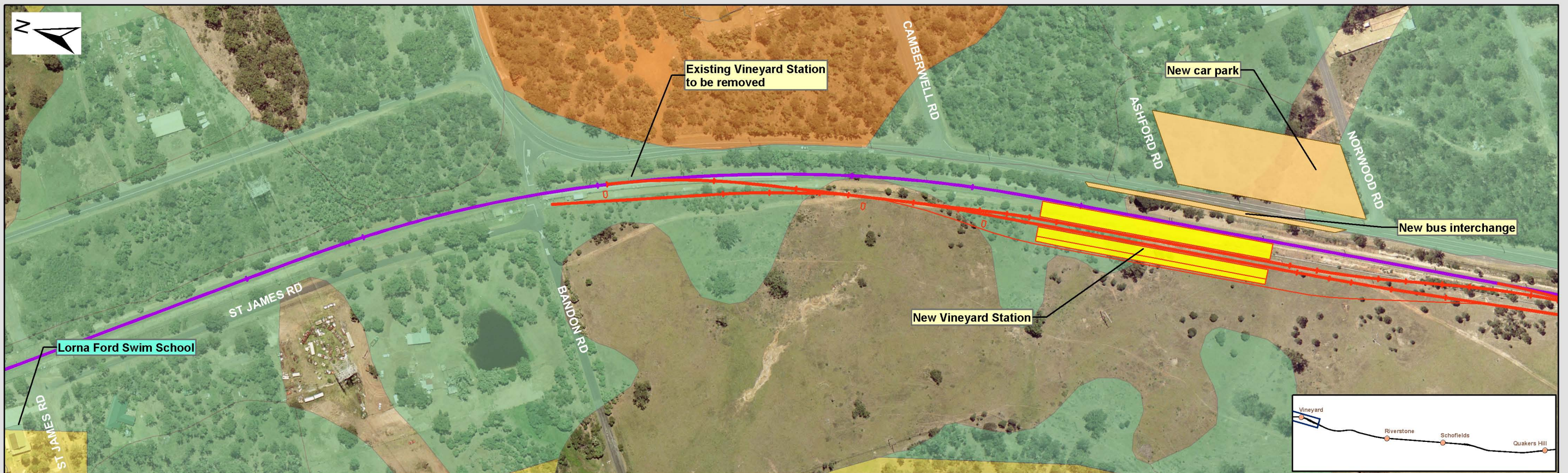
Appendix A

Aerial photographs and the Project design



- Proposed rail line
- Existing rail line
- Non-residential noise sensitive receivers
- Residential noise sensitive receivers

J:\A353-ENV\PL\PROJECTS\18724A_Quakers_Vineyard\10_GIS\Projects\AcView\218724A_2013_New_Route_Landscape_Tile4.mxd



J:\A353-ENV\PLN\PROJ\02118724A_Quakers_Vineyard\10_GIS\Projects\ArcView\2118724A_2014_New_Route_Landscape_Tile5.mxd

- | | | |
|----------------------|---|---|
| — Proposed rail line | Cumberland vegetation | □ Non-residential noise sensitive receivers |
| — Existing rail line | □ Cooks River Castlereagh Ironbark Forest | □ Residential noise sensitive receivers |
| | □ Shale Plains Woodland | |
| | □ Shale/Gravel Transition Forest | |