

SCHEDULE OF AREAS			
SITE AREA - (total site subject to survey)		134 906 sqm	
DEVELOPABLE SITE AREA (excluding easement area)		105 206 sqm	
WAREHOUSE 1		3 095 sqm	
OFFICE 1 GROUND FLOOR		560 sqm	
WAREHOUSE 1 TOTAL AREA		3 655 sqm	
WAREHOUSE 2		41 000 sqm	
BATTERY LAHRGE ROOM		805 sqm	
DANGEROUS GOODS STORE		1 920 sqm	
OFFICE 2		977 sqm	
WAREHOUSE MEZZANINE (FUTURE)		5 000 sqm	
WAREHOUSE 2 TOTAL AREA		49 702 sqm	
TOTAL BUILDING AREA (GFA)		53 357 sqm	
WAREHOUSE 2 EXPANSION AREA		10 000 sqm	
CARPARKING AREAS	WH1	WH1	TOTAL SPACES
CARPARKING REQUIRED	13	179	179 spaces
(17a guidelines with 1/300 & office 1/300)			
CARPARKING PROVIDED	24	203	227 spaces
AWNING AREAS			9 481 sqm
WAREHOUSE 1			2 877 sqm
WAREHOUSE 2			6 604 sqm
SITE COVERAGE			66.6%
(based on building footprint of 62 838 sqm incl. awnings)			

**SITE PLAN - OVERALL LAYOUT**  
1: 800 scale

Notes:  
DO NOT SCALE BY DRAWING DIMENSIONS & LEVELS TO BE VERIFIED PRIOR TO COMMENCEMENT OF WORK WITH FIGURED DIMENSIONS IN PREFERENCE TO SCALED DIMENSIONS.  
MATERIALS & WORKMANSHIP TO BE IN STRICT ACCORDANCE WITH ALL RELEVANT S.A.A. STANDARDS, BCA AND LOCAL AUTHORITY REQUIREMENTS.  
THIS DRAWING IS SUBJECT TO COPYRIGHT AND IS THE PROPERTY OF THE AUTHOR. THIS DRAWING MUST NOT BE REPRODUCED, COPIED OR USED WITHOUT THE WRITTEN AUTHORITY OF AXIS ARCHITECTURAL Pty Ltd.

Revisions		
A	02/11/12	issued for development application
B	09/11/12	issued for development application
C	19/11/12	issued for development application

**LOGOS**

LOGOS PROPERTY GROUP  
Suite 12.02 / 167 Macquarie Street  
Sydney NSW 2000  
T + 61 2 9199 6266 F + 61 2 9231 0948

Project

**Super Retail Group**

Passionate about our people | our products | our performance

**PROPOSED WAREHOUSE DISTRIBUTION & OFFICE FACILITIES**

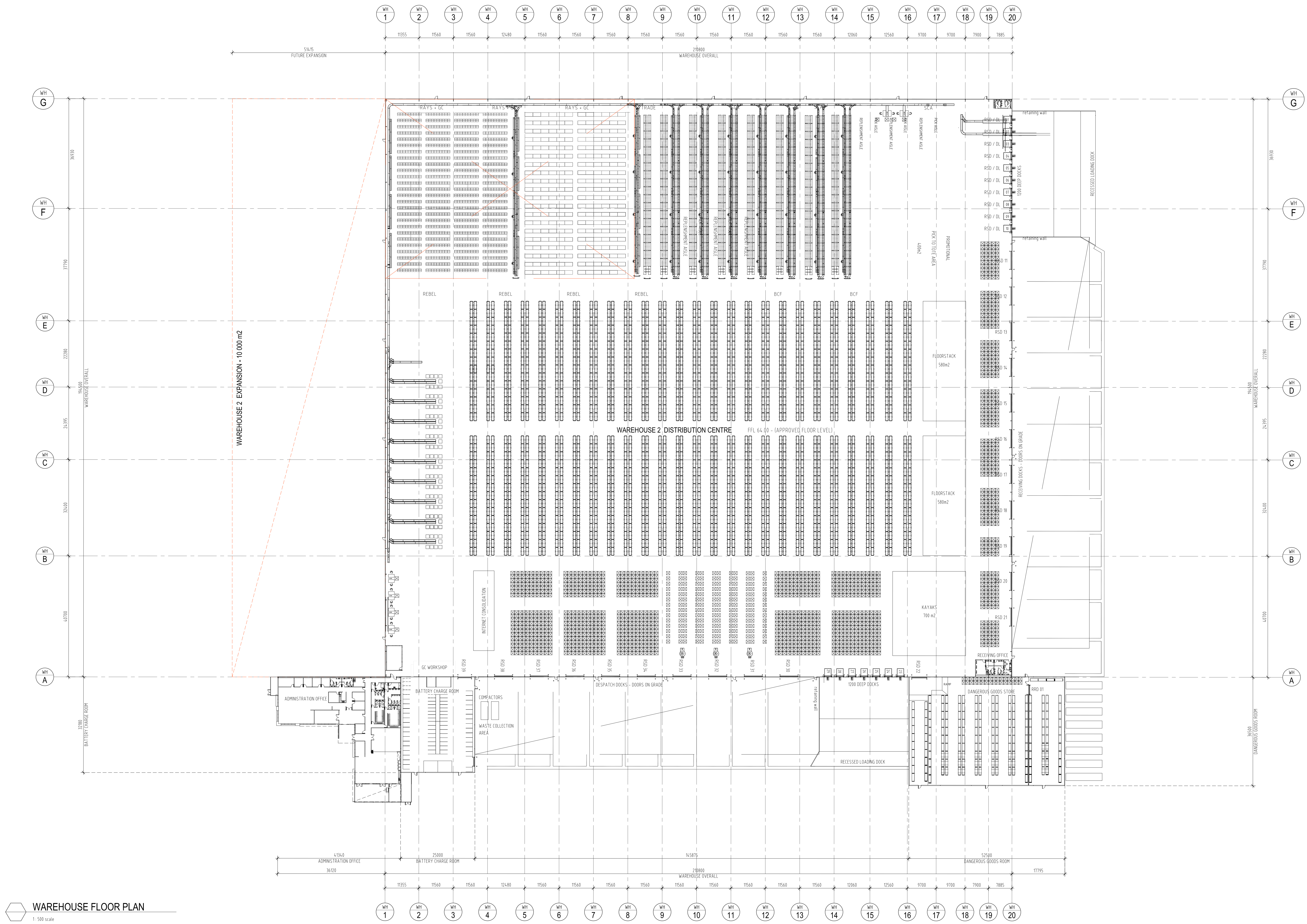
SUPER RETAIL GROUP  
LOT 62 / 133 - 145 LENORE LANE, ERSKINE PARK, NSW.  
SECTION 75 S APPLICATION TO MODIFY EXISTING DEVELOPMENT CONSENT - MP\_08\_0016

**AXIS ARCHITECTURAL**  
4 / 112 Cronulla Street, Cronulla NSW 2230  
p + 02 9523 7858 / m + 06 16 954 426  
e + david@axisarchitects.com.au  
AXIS ARCHITECTURAL Pty Ltd - ABN 18 006 813 316  
Nominated Architect - David McDonald NSW ABN No. 7997

Project north

**SITE PLAN**

Date	Scale	Drawn	Project number	Drawing number	Issue
Nov 2012	1:800	AA	120303	DA - 002	C



**WAREHOUSE FLOOR PLAN**  
1:500 scale

Notes:  
DO NOT SCALE BY DRAWING. DIMENSIONS & LEVELS TO BE VERIFIED PRIOR TO COMMENCEMENT OF WORK WITH FIGURED DIMENSIONS IN PREFERENCE TO SCALED DIMENSIONS.  
MATERIALS & WORKMANSHIP TO BE IN STRICT ACCORDANCE WITH ALL RELEVANT S.A.A. STANDARDS, BCA AND LOCAL AUTHORITY REQUIREMENTS.  
THIS DRAWING IS SUBJECT TO COPYRIGHT AND IS THE PROPERTY OF THE AUTHOR. THIS DRAWING MUST NOT BE REPRODUCED, COPIED OR USED WITHOUT THE WRITTEN AUTHORITY OF AXIS ARCHITECTURAL Pty Ltd.

Revisions	Date	Description
A	02/11/12	issued for Development Application
B	09/11/12	issued for Development Application
C	19/11/12	issued for Development Application

**LOGOS**

LOGOS PROPERTY GROUP  
Suite 12.02 / 167 Macquarie Street  
Sydney NSW 2000  
T + 61 2 9199 6266 F + 61 2 9231 0948

Project

**Super Retail Group**

Passionate about our people | our products | our performance

**PROPOSED WAREHOUSE DISTRIBUTION & OFFICE FACILITIES**

SUPER RETAIL GROUP  
LOT 62 / 133 - 145 LENORE LANE, ERSKINE PARK, NSW.

SECTION 75 S APPLICATION TO MODIFY EXISTING DEVELOPMENT CONSENT - MP 08\_0016

**AXIS ARCHITECTURAL**

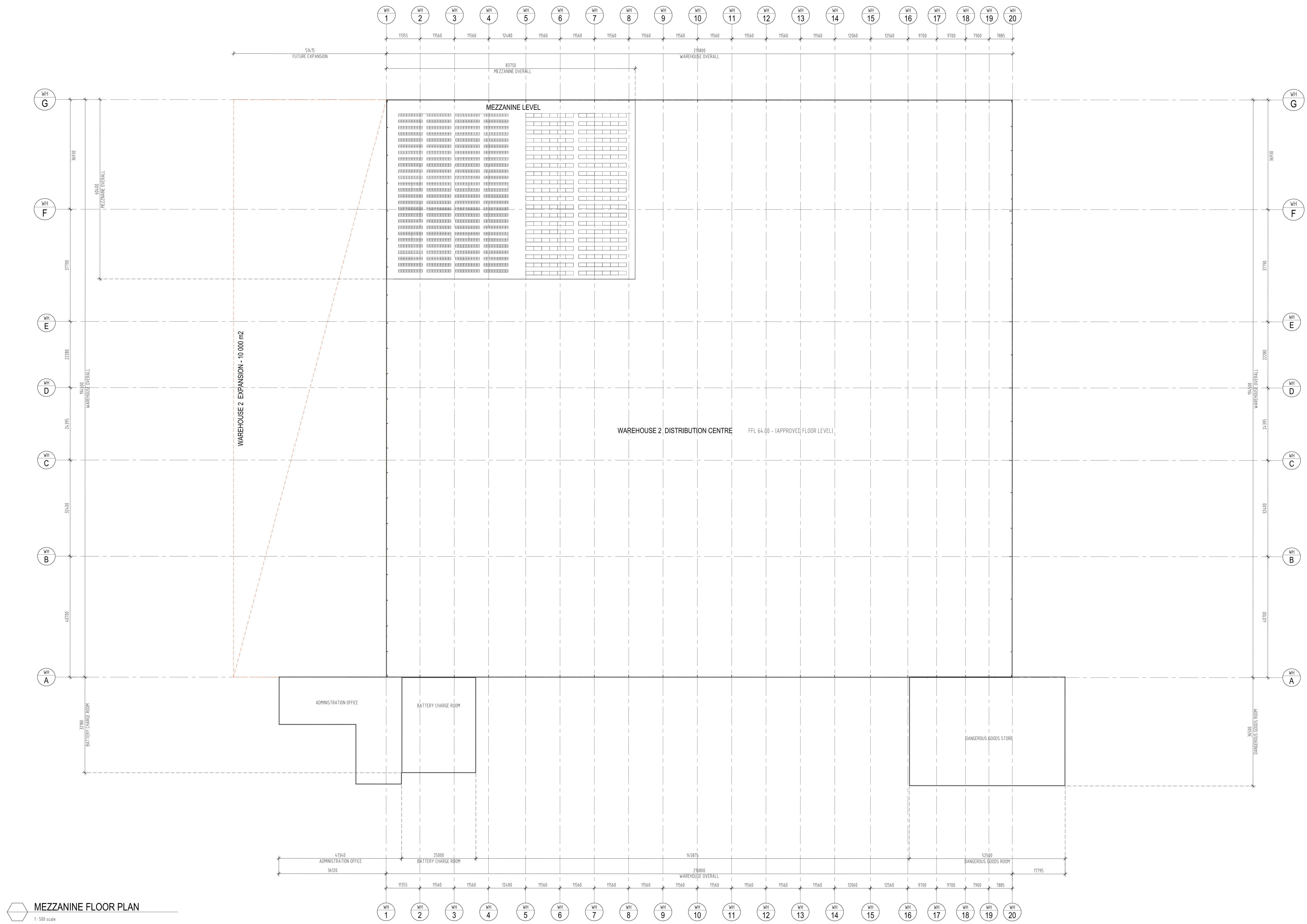
4 / 112 Cronulla Street, Cronulla NSW 2230  
p + 02 9523 7858 / m + 04 14 954 435  
e + david@axisarchitects.com.au

AXIS ARCHITECTURAL Pty Ltd - ABN 18 906 813 316  
Nominated Architect - David McDonald NSW ARB No. 7997

Project north

**WAREHOUSE 2 FLOOR PLAN**

Date	Scale	Drawn	Project number	Drawing number	Issue
Nov 2012	1:500	AA	120303	DA - 101	C



**MEZZANINE FLOOR PLAN**  
1:500 scale

Notes:  
DO NOT SCALE BY DRAWING. DIMENSIONS & LEVELS TO BE VERIFIED PRIOR TO COMMENCEMENT OF WORK WITH FIGURED DIMENSIONS IN PREFERENCE TO SCALED DIMENSIONS.  
MATERIALS & WORKMANSHIP TO BE IN STRICT ACCORDANCE WITH ALL RELEVANT S.A.A. STANDARDS, B.C.A. AND LOCAL AUTHORITY REQUIREMENTS.  
THIS DRAWING IS SUBJECT TO COPYRIGHT AND IS THE PROPERTY OF THE AUTHOR. THIS DRAWING MUST NOT BE REPRODUCED, COPIED OR USED WITHOUT THE WRITTEN AUTHORITY OF AXIS ARCHITECTURAL Pty Ltd.

Revision	Date	Description
A	20/11/12	issued for Development Application

**LOGOS**

LOGOS PROPERTY GROUP  
Suite 12.02 / 167 Macquarie Street  
Sydney NSW 2000  
T + 61 2 9199 6266 F + 61 2 9231 0948

Project

**Super Retail Group**

Passionate about our people | our products | our performance

**PROPOSED WAREHOUSE DISTRIBUTION & OFFICE FACILITIES**

SUPER RETAIL GROUP  
LOT 62 / 133 - 145 LENORE LANE, ERSKINE PARK, NSW.  
SECTION 75 S APPLICATION TO MODIFY EXISTING DEVELOPMENT CONSENT - MP 08\_0016

**AXIS ARCHITECTURAL**

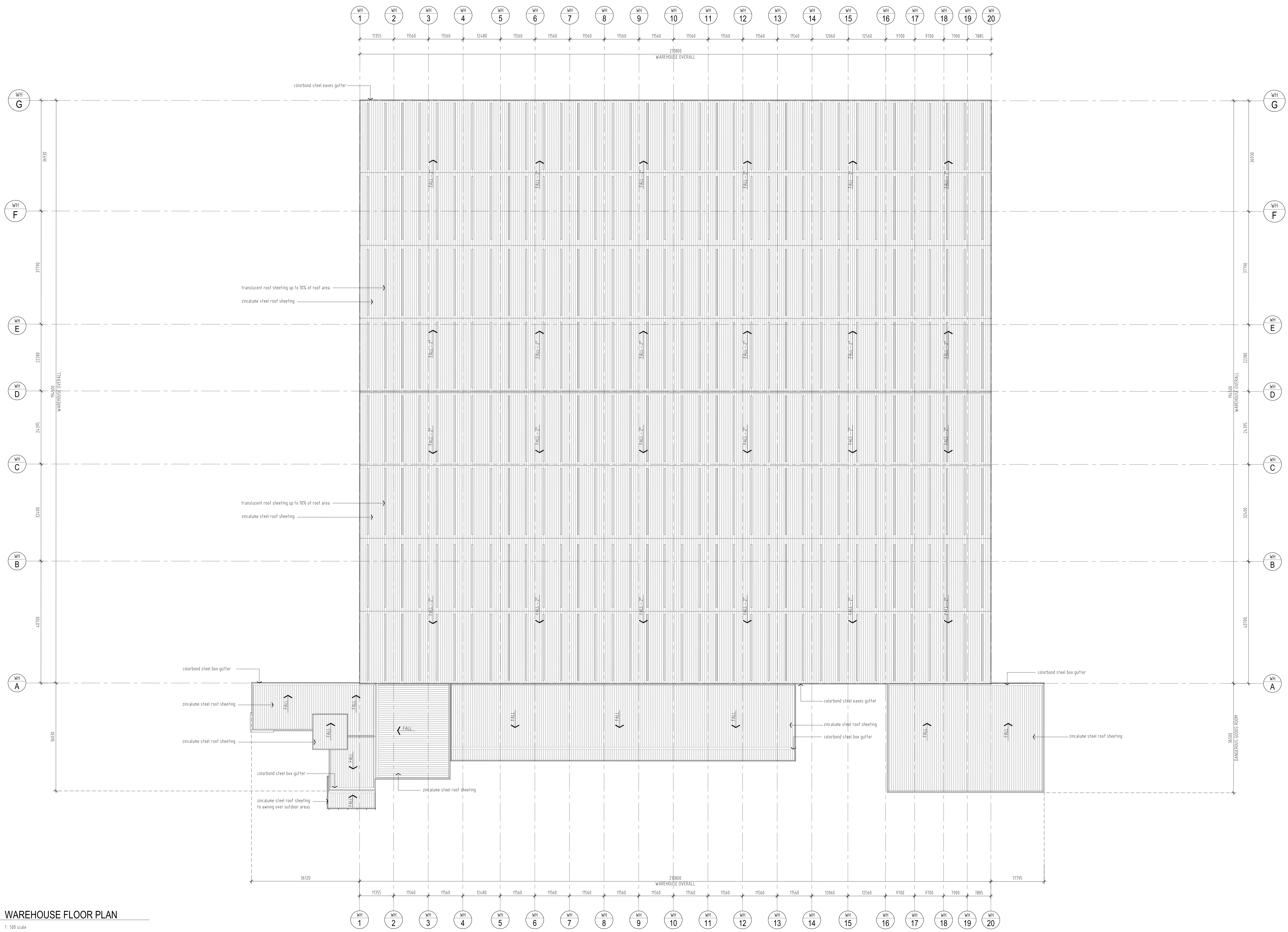
4 / 112 Cronulla Street, Cronulla NSW 2230  
p + 02 9523 7858 / m + 06 16 954 435  
e + david@axisarchitects.com.au

AXIS ARCHITECTURAL Pty Ltd - ABN 18 086 813 316  
Notified Architect - David McDonald NSW ABN No. 7997

Project north

**WAREHOUSE 2 MEZZANINE PLAN**

Date	Scale	Drawn	Project number	Drawing number	Issue
Nov 2012	1:500	AA	120303	DA - 102	A



**WAREHOUSE FLOOR PLAN**  
1:500 scale

Notes:  
DO NOT SCALE UP DRAWING DIMENSIONS & LEVELS TO BE VERIFIED PRIOR TO COMMENCEMENT OF WORK WITH FIGURED DIMENSIONS IN PREFERENCE TO SCALED DIMENSIONS.  
MATERIALS & WORKMANSHIP TO BE IN STRICT ACCORDANCE WITH ALL RELEVANT S.A.A. STANDARDS, B.C.A. AND LOCAL AUTHORITY REQUIREMENTS.  
THIS DRAWING IS SUBJECT TO COPYRIGHT AND IS THE PROPERTY OF THE AUTHOR. THIS DRAWING MUST NOT BE REPRODUCED, COPIED OR USED WITHOUT THE WRITTEN AUTHORITY OF AXIS ARCHITECTURAL Pty Ltd.

Revisions	Date	Description
A	02/11/12	issued for Development Application
B	09/11/12	issued for Development Application
C	19/11/12	issued for Development Application

**LOGOS**

LOGOS PROPERTY GROUP  
Suite 12.02 / 167 Macquarie Street  
Sydney NSW 2000  
T + 61 2 9199 6266 F + 61 2 9231 0948

Project

**Super Retail Group**

Passionate about our people | our products | our performance

**PROPOSED WAREHOUSE DISTRIBUTION & OFFICE FACILITIES**

SUPER RETAIL GROUP  
LOT 62 / 133 - 145 LENORE LANE, ERSKINE PARK, NSW.  
SECTION 75 S APPLICATION TO MODIFY EXISTING DEVELOPMENT CONSENT - MP 08\_0016

**AXIS ARCHITECTURAL**

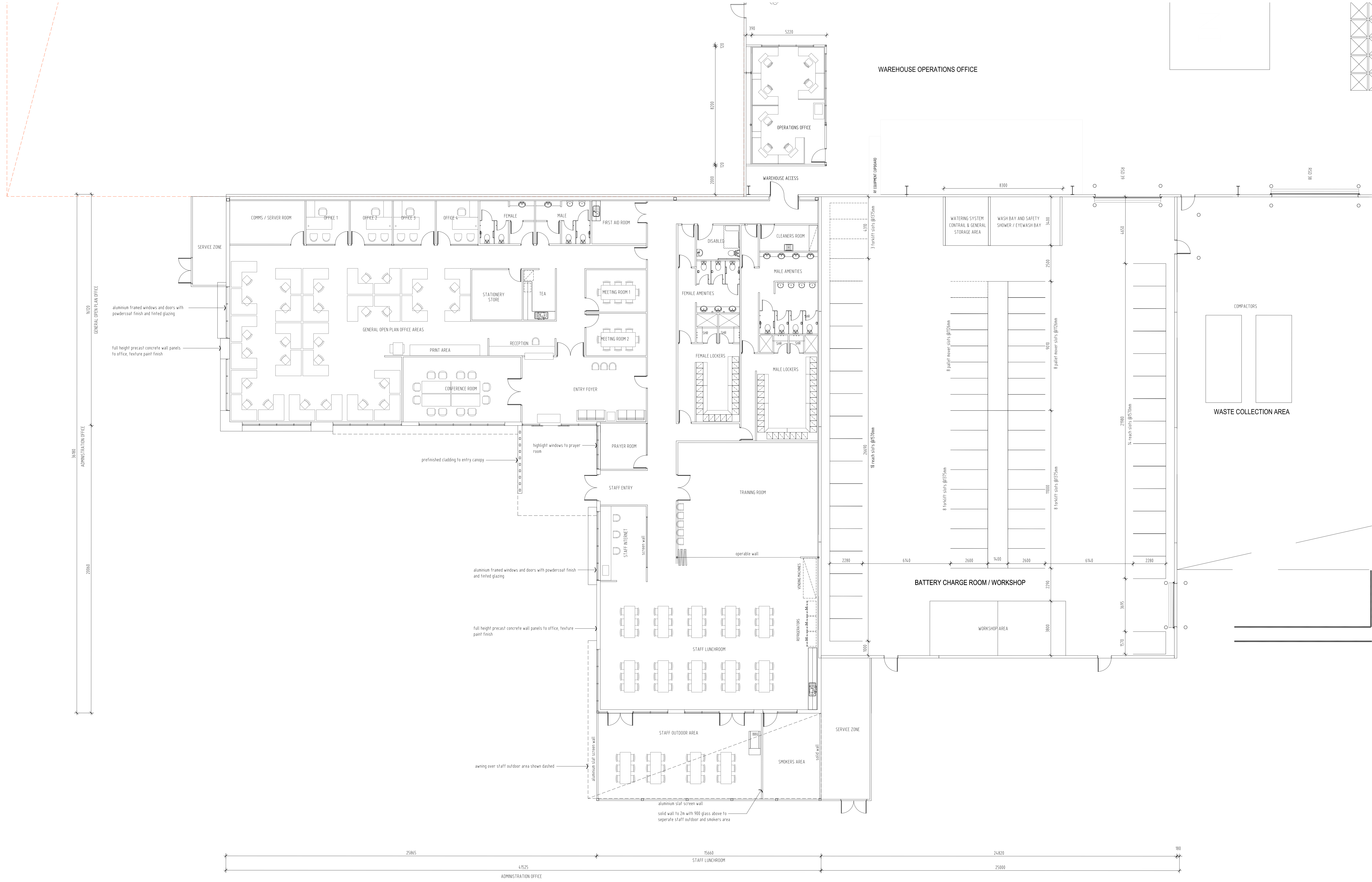
4 / 112 Cronulla Street, Cronulla NSW 2230  
p + 02 9523 7858 / m + 04 16 954 435  
e + david@axisarchitects.com.au

AXIS ARCHITECTURAL Pty Ltd - ABN 18 086 813 316  
Notified Architect - David McDonald NSW ABN No. 7987

Project north

**ROOF PLAN - WAREHOUSE 2**

Date	Scale	Drawn	Project number	Drawing number	Issue
Nov 2012	1:500	AA	120303	DA - 106	C



OFFICE FLOOR PLAN  
1:100 scale

Notes

DO NOT SCALE BY DRAWING DIMENSIONS & LEVELS TO BE VERIFIED PRIOR TO COMMENCEMENT OF WORK WITH FIGURED DIMENSIONS IN PREFERENCE TO SCALED DIMENSIONS.

MATERIALS & WORKMANSHIP TO BE IN STRICT ACCORDANCE WITH ALL RELEVANT S.A.A. STANDARDS, B.C.A. AND LOCAL AUTHORITY REQUIREMENTS.

THIS DRAWING IS SUBJECT TO COPYRIGHT AND IS THE PROPERTY OF THE AUTHOR. THIS DRAWING MUST NOT BE REPRODUCED, COPIED OR USED WITHOUT THE WRITTEN AUTHORITY OF AXIS ARCHITECTURAL Pty Ltd.

Revisions	Date	Description
A	02/11/12	issued for Development Application
B	09/11/12	issued for Development Application
C	19/11/12	issued for Development Application

**LOGOS**

LOGOS PROPERTY GROUP  
Suite 12.02 / 167 Macquarie Street  
Sydney NSW 2000  
T + 61 2 9199 6266 F + 61 2 9231 0948

Project

**Super Retail Group**

Passionate about our people | our products | our performance

PROPOSED WAREHOUSE DISTRIBUTION & OFFICE FACILITIES

SUPER RETAIL GROUP  
LOT 62 / 133 - 145 LENORE LANE, ERSKINE PARK, NSW.  
SECTION 75 S APPLICATION TO MODIFY EXISTING DEVELOPMENT CONSENT - MP 08\_0016

**AXIS ARCHITECTURAL**

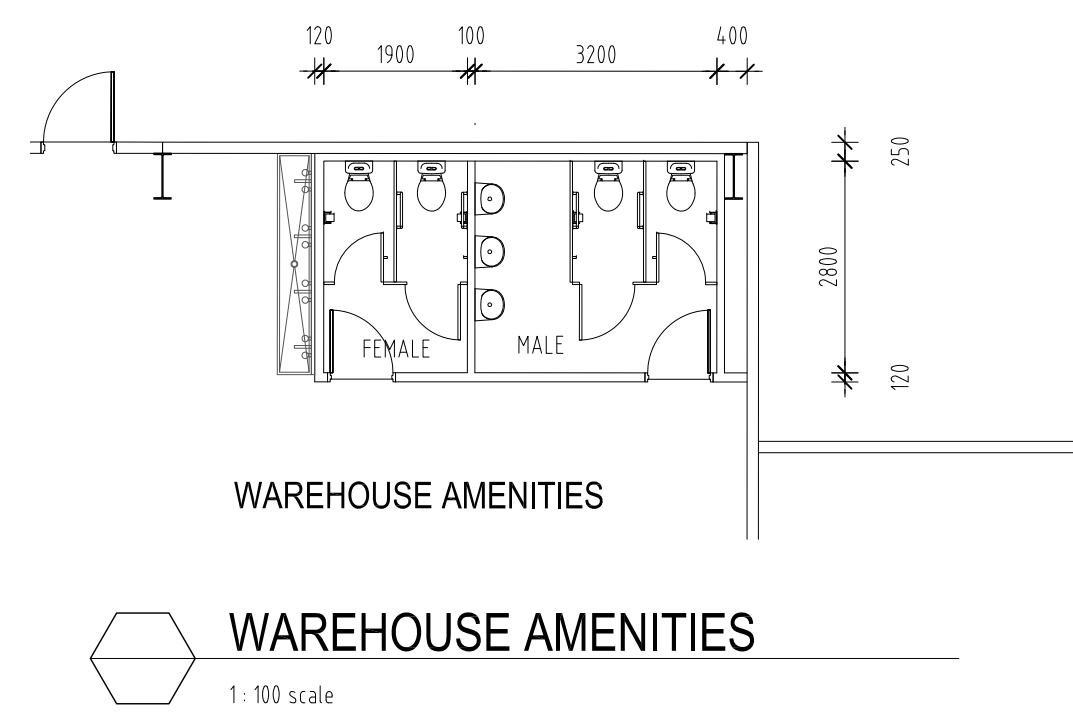
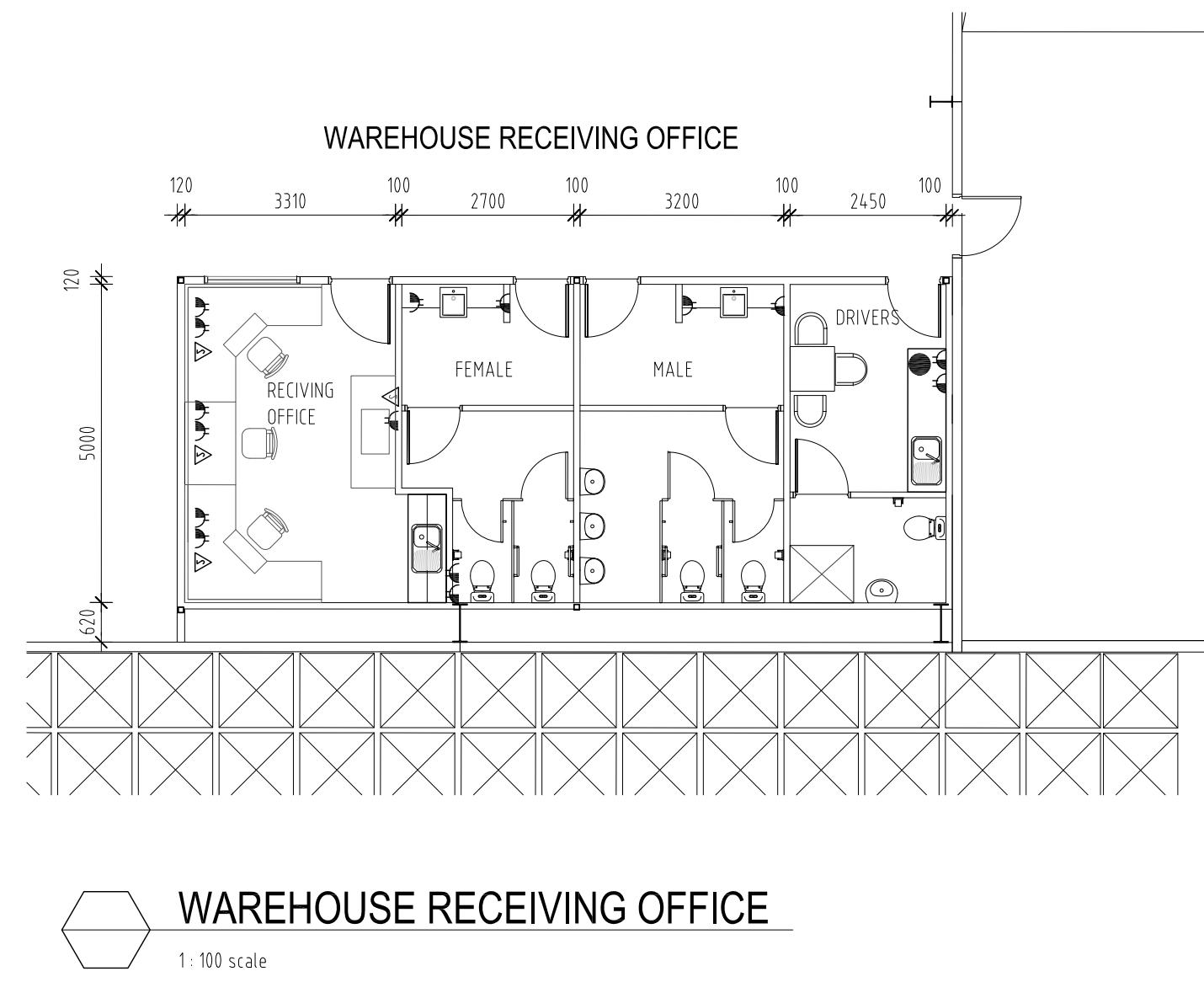
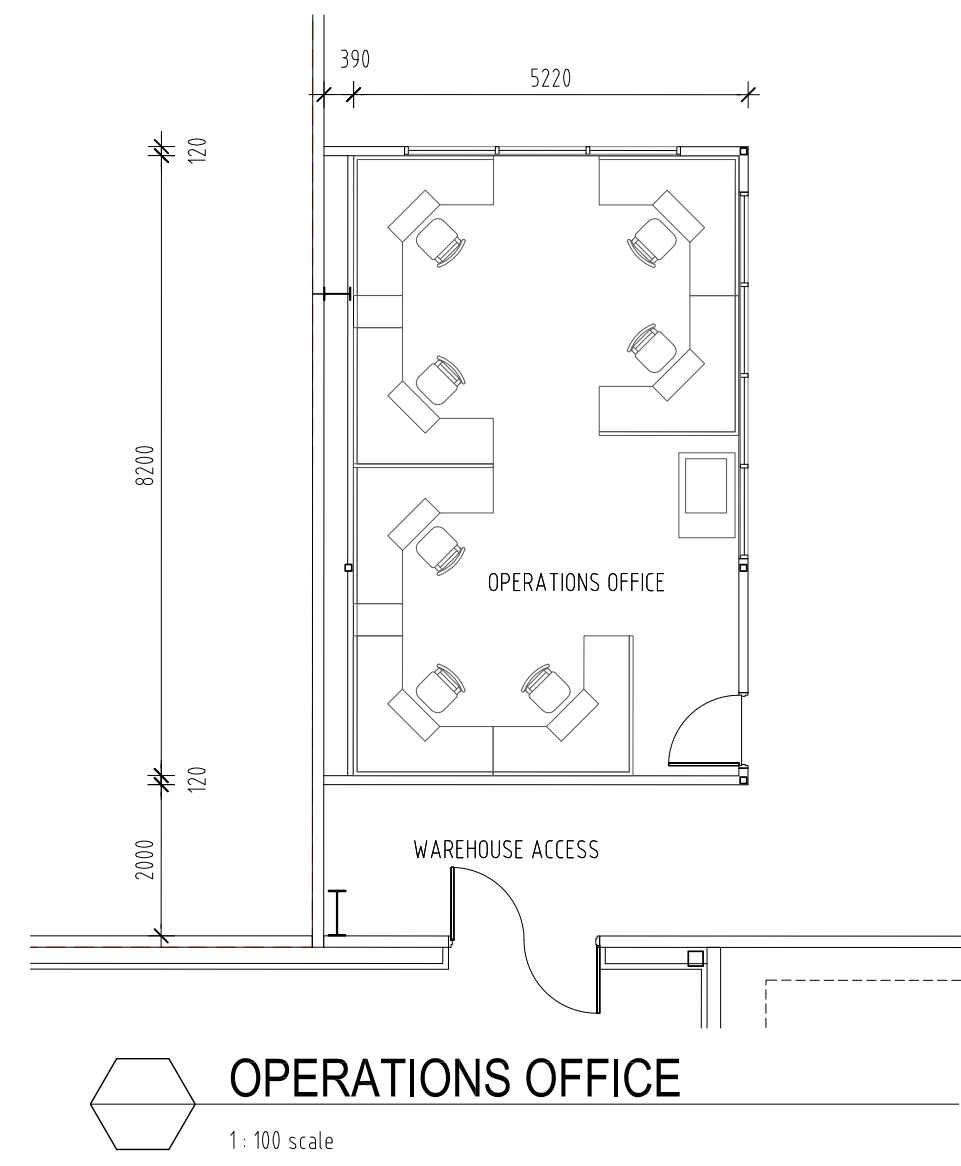
4 / 112 Cronulla Street, Cronulla NSW 2230  
p + 02 9523 7858 / m + 04 16 954 4265  
e + david@axisarchitects.com.au

AXIS ARCHITECTURAL Pty Ltd - ABN 18 986 813 316  
Nominated Architect - David McDonald NSW A88 No. 7997

Project north

**OFFICE 2 FLOOR PLAN**

Date	Scale	Drawn	Project number	Drawing number	Issue
Nov 2012	1:100	AA	120303	DA - 111	C



NOTE: DRAWING TO REPLACE  
DRAWING DA - 112 OFFICE 3 PLAN

Notes:  
DO NOT SCALE UP DRAWING DIMENSIONS & LEVELS TO BE VERIFIED PRIOR TO COMMENCEMENT OF WORK WITH FIGURED DIMENSIONS IN PREFERENCE TO SCALED DIMENSIONS.  
MATERIALS & WORKMANSHIP TO BE IN STRICT ACCORDANCE WITH ALL RELEVANT S.A.S. STANDARDS, B.C.A. AND LOCAL AUTHORITY'S REQUIREMENTS.  
THIS DRAWING IS SUBJECT TO COPYRIGHT AND IS THE PROPERTY OF THE AUTHOR. THIS DRAWING MUST NOT BE REPRODUCED, COPIED OR USED WITHOUT THE WRITTEN AUTHORITY OF AXIS ARCHITECTURAL Pty Ltd.

Revisions	Date	Description
A	20/11/12	issued for Development Application



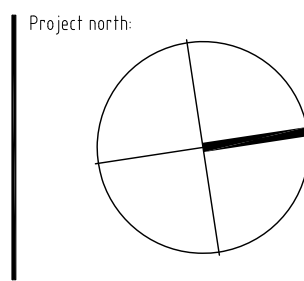
LOGOS PROPERTY GROUP  
Suite 12.02 / 167 Macquarie Street  
Sydney NSW 2000  
T + 61 2 9199 6266 F + 61 2 9231 0948



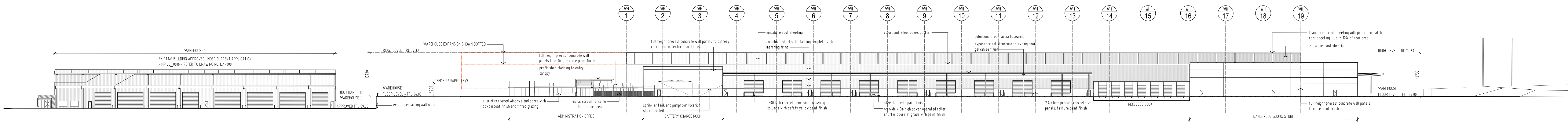
PROPOSED WAREHOUSE DISTRIBUTION & OFFICE FACILITIES  
SUPER RETAIL GROUP  
LOT 62 / 133 - 145 LENORE LANE, ERSKINE PARK, NSW.  
SECTION 75 S APPLICATION TO MODIFY EXISTING DEVELOPMENT CONSENT - MP 08\_0016



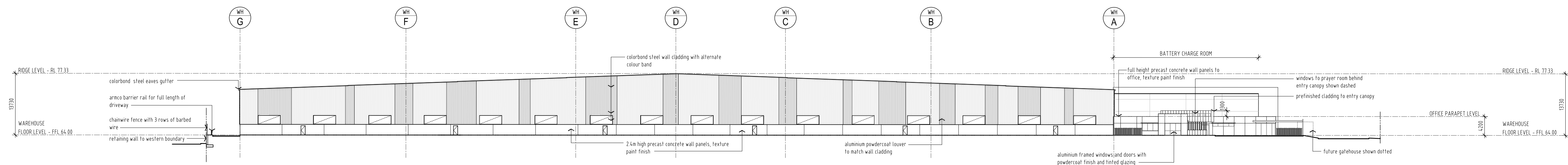
AXIS ARCHITECTURAL  
4 / 112 Cronulla Street - Cronulla NSW 2230  
p + 61 2 9523 7858 / m + 61 4 954 4265  
e + david@axisarchitects.com.au  
AXIS ARCHITECTURAL Pty Ltd - ABN 18 186 813 316  
Nominated Architect - David McDonald NSW ABN No. 7997



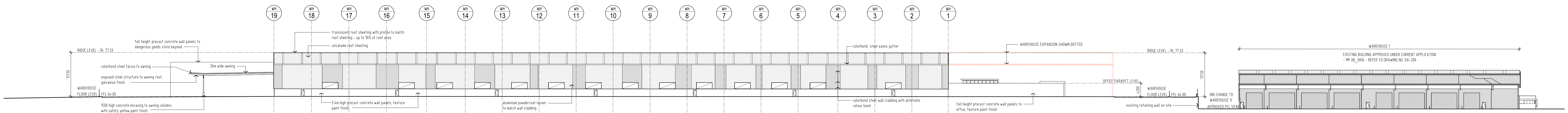
Drawing title		Project north	
WAREHOUSE AMENITIES			
Date	Scale	Drawn	Project number
Nov 2012	1:100	AA	120303
Sheet	Issue	Drawing number	Issue
01/1	A	DA - 112	A



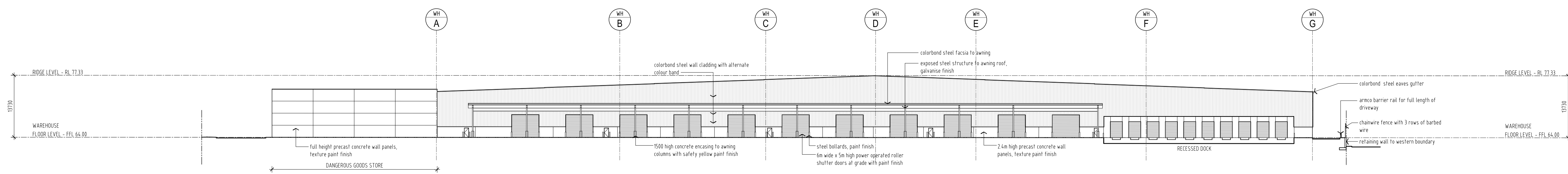
**EAST ELEVATION**  
1:500 scale



**SOUTH ELEVATION**  
1:500 scale



**WEST ELEVATION**  
1:500 scale



**NORTH ELEVATION**  
1:500 scale

Notes:  
DO NOT SCALE BY DRAWING DIMENSIONS & LEVELS TO BE VERIFIED PRIOR TO COMMENCEMENT OF WORK WITH FIGURED DIMENSIONS IN PREFERENCE TO SCALED DIMENSIONS.  
MATERIALS & WORKMANSHIP TO BE IN STRICT ACCORDANCE WITH ALL RELEVANT S.A.A. STANDARDS, B.C.A. AND LOCAL AUTHORITY REQUIREMENTS.  
THIS DRAWING IS SUBJECT TO COPYRIGHT AND IS THE PROPERTY OF THE AUTHOR. THIS DRAWING MUST NOT BE REPRODUCED, COPIED OR USED WITHOUT THE WRITTEN AUTHORITY OF AXIS ARCHITECTURAL Pty Ltd.

Revision	Date	Description
A	02/11/12	issued for Development Application
B	07/11/12	louvre banks revised
C	09/11/12	issued for Development Application
D	19/11/12	issued for Development Application

**LOGOS**

LOGOS PROPERTY GROUP  
Suite 12.02 / 167 Macquarie Street  
Sydney NSW 2000  
T + 61 2 9199 6266 F + 61 2 9231 0948

Project

**Super Retail Group**

Passionate about our people | our products | our performance

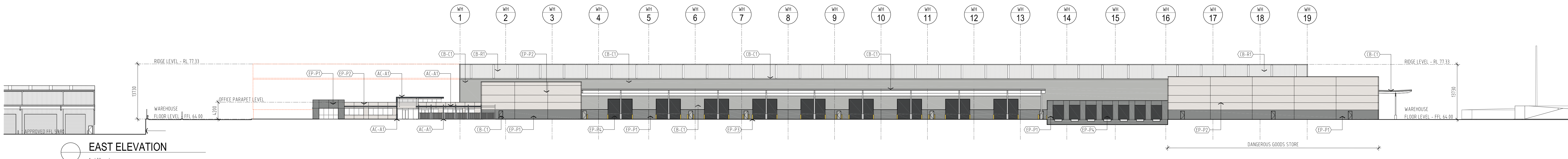
**PROPOSED WAREHOUSE DISTRIBUTION & OFFICE FACILITIES**

SUPER RETAIL GROUP  
LOT 62 / 133 - 145 LENORE LANE, ERSKINE PARK, NSW.  
SECTION 75 S APPLICATION TO MODIFY EXISTING DEVELOPMENT CONSENT - MP 08\_0016

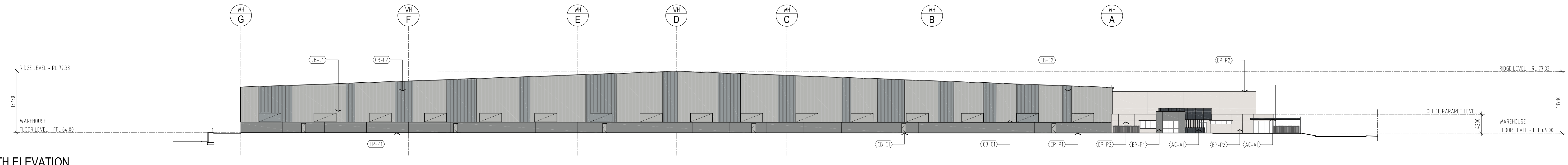
**AXIS ARCHITECTURAL**  
4 / 112 Cronulla Street, Cronulla NSW 2230  
p + 62 9523 7858 / m + 61 76 954 4365  
e + david@axisarchitects.com.au

AXIS ARCHITECTURAL Pty Ltd - ABN 18 906 813 316  
Nominated Architect - David McDonald NSW A88 No. 7997

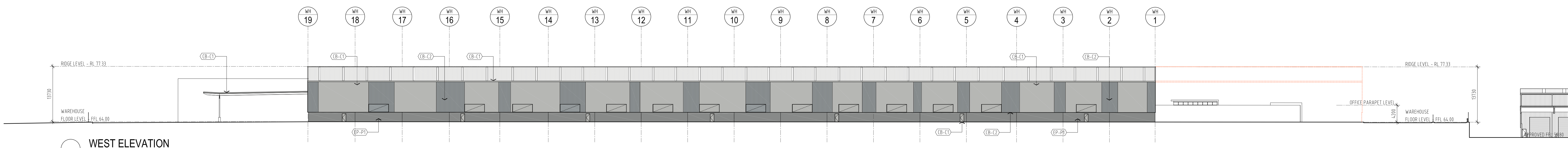
Date	Scale	Drawn	Project number	Drawing number	Issue
Nov 2012	1:500 B1 Sheet	AA	120303	DA - 200.1	D



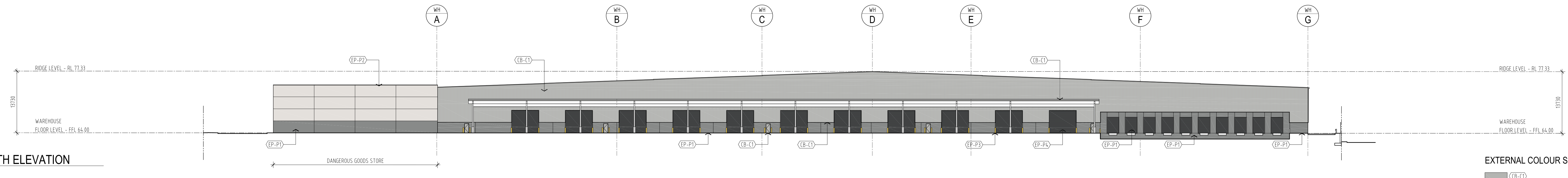
**EAST ELEVATION**  
1:400 scale



**SOUTH ELEVATION**  
1:400 scale



**WEST ELEVATION**  
1:400 scale



**NORTH ELEVATION**  
1:400 scale

**EXTERNAL COLOUR SCHEDULE**

(B-C1)	Colorbond steel - Shale Grey
(B-C2)	Colorbond steel - Windspray
(B-R)	Zincalume Steel
(EP-P1)	Paint finish - Dulux / Timeless Grey
(EP-P2)	Paint finish - Dulux / Mud Berry
(EP-P3)	Paint finish - Sunburst
(EP-P4)	Paint finish - Domino
(AC-A)	Alucobond cladding / Anthrazit Grey

Notes:  
DO NOT SCALE BY DRAWING DIMENSIONS & LEVELS TO BE VERIFIED PRIOR TO COMMENCEMENT OF WORK WITH FIGURED DIMENSIONS IN PREFERENCE TO SCALED DIMENSIONS.  
MATERIALS & WORKMANSHIP TO BE IN STRICT ACCORDANCE WITH ALL RELEVANT S.A.A. STANDARDS, B.C.A. AND LOCAL AUTHORITY REQUIREMENTS.  
THIS DRAWING IS SUBJECT TO COPYRIGHT AND IS THE PROPERTY OF THE AUTHOR. THIS DRAWING MUST NOT BE REPRODUCED, COPIED OR USED WITHOUT THE WRITTEN AUTHORITY OF AXIS ARCHITECTURAL Pty Ltd.

Revisions		
A	02/11/12	issued for Development Application
B	09/11/12	issued for Development Application
C	19/11/12	issued for Development Application

**LOGOS**

LOGOS PROPERTY GROUP  
Suite 12.02 / 167 Macquarie Street  
Sydney NSW 2000  
T + 61 2 9199 6266 F + 61 2 9231 0948

Project

**Super Retail Group**

Passionate about our people | our products | our performance

**PROPOSED WAREHOUSE DISTRIBUTION & OFFICE FACILITIES**

SUPER RETAIL GROUP  
LOT 62 / 133 - 145 LENORE LANE, ERSKINE PARK, NSW.  
SECTION 75 S APPLICATION TO MODIFY EXISTING DEVELOPMENT CONSENT - MP 08\_0016

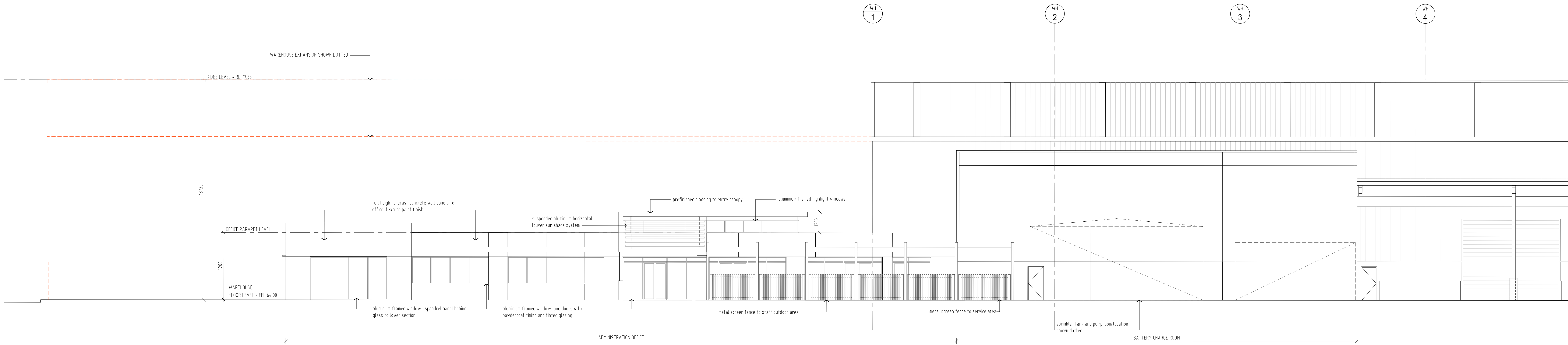
**AXIS ARCHITECTURAL**  
4 / 112 Cronulla Street, Cronulla NSW 2230  
p + 02 9523 7858 / m + 04 16 954 4265  
e + david@axisarchitects.com.au

AXIS ARCHITECTURAL Pty Ltd - ABN 18 986 813 316  
Named Architect - David McDonald NSW ABN No. 7997

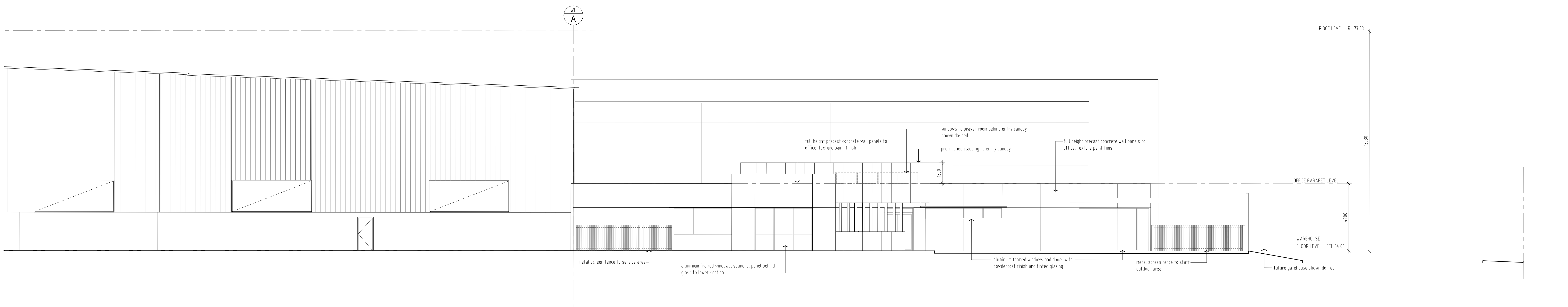
Project name

**COLOURED ELEVATIONS WAREHOUSE 2**

Date	Scale	Drawn	Project number	Drawing number	Issue
Nov 2012	1:400	AA	120303	DA - 200.2	E



OFFICE ELEVATION - EAST  
1:100 scale



OFFICE ELEVATION - SOUTH  
1:100 scale

NOTE: REFER TO DRAWING DA - 203 FOR OFFICE 1 ELEVATIONS

Notes:  
DO NOT SCALE BY DRAWING DIMENSIONS & LEVELS TO BE VERIFIED PRIOR TO COMMENCEMENT OF WORK WITH FIGURED DIMENSIONS IN PREFERENCE TO SCALED DIMENSIONS.  
MATERIALS & WORKMANSHIP TO BE IN STRICT ACCORDANCE WITH ALL RELEVANT S.A.A. STANDARDS, BCA AND LOCAL AUTHORITY REQUIREMENTS.  
THIS DRAWING IS SUBJECT TO COPYRIGHT AND IS THE PROPERTY OF THE AUTHOR. THIS DRAWING MUST NOT BE REPRODUCED, COPIED OR USED WITHOUT THE WRITTEN AUTHORITY OF AXIS ARCHITECTURAL Pty Ltd.

Revisions	Date	Description
A	02/11/12	issued for Development Application
B	09/11/12	issued for Development Application
C	19/11/12	issued for Development Application



LOGOS PROPERTY GROUP  
Suite 12.02 / 167 Macquarie Street  
Sydney NSW 2000  
T + 61 2 9199 6266 F + 61 2 9231 0948



PROPOSED WAREHOUSE DISTRIBUTION & OFFICE FACILITIES  
SUPER RETAIL GROUP  
LOT 62 / 133 - 145 LENORE LANE, ERSKINE PARK, NSW.  
SECTION 75 S APPLICATION TO MODIFY EXISTING DEVELOPMENT CONSENT - MP 08\_0016



Date	Scale	Drawn	Project number	Drawing number	Issue
Nov 2012	1:100	AA	120303	DA - 203.1	C



VIEW FROM SOUTH EAST CORNER OF SITE



VIEW FROM SOUTH EAST CORNER OF SITE

Notes:  
 DO NOT SCALE BY DRAWING DIMENSIONS & LEVELS TO BE VERIFIED PRIOR TO COMMENCEMENT OF WORK WITH FIGURED DIMENSIONS IN PREFERENCE TO SCALED DIMENSIONS.  
 MATERIALS & WORKMANSHIP TO BE IN STRICT ACCORDANCE WITH ALL RELEVANT S.A.A. STANDARDS, B.C.A. AND LOCAL AUTHORITY REQUIREMENTS.  
 THIS DRAWING IS SUBJECT TO COPYRIGHT AND IS THE PROPERTY OF THE AUTHOR. THIS DRAWING MUST NOT BE REPRODUCED, COPIED OR USED WITHOUT THE WRITTEN AUTHORITY OF AXIS ARCHITECTURAL Pty Ltd.

Revisions	
A	09/11/12 issued for Development Application
B	26/11/12 issued for Development Application



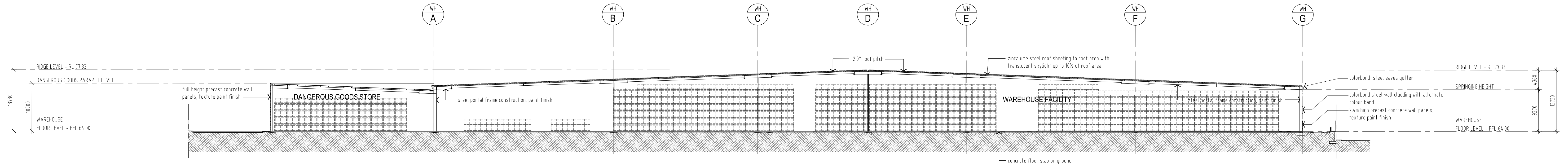
LOGOS PROPERTY GROUP  
 Suite 12.02 / 167 Macquarie Street  
 Sydney NSW 2000  
 T + 61 2 9199 6266 F + 61 2 9231 0948



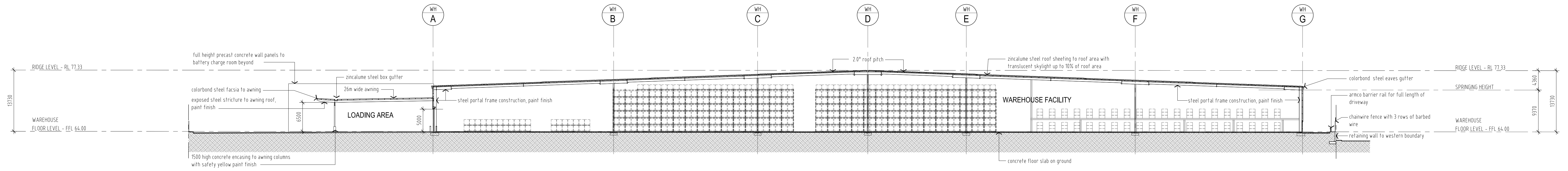
PROPOSED WAREHOUSE DISTRIBUTION & OFFICE FACILITIES  
 SUPER RETAIL GROUP  
 LOT 62 / 133 - 145 LENORE LANE, ERSKINE PARK, NSW.  
 SECTION 75 S APPLICATION TO MODIFY EXISTING DEVELOPMENT CONSENT - MP 08\_0016



Project name		Drawing title			
PERSPECTIVE VIEWS		PERSPECTIVE VIEWS			
Date	Scale	Drawn	Project number	Drawing number	Issue
Nov 2012	NA	AA	120303	DA - 205	B



**DANGEROUS GOODS WAREHOUSE SECTION**  
1:400 scale



**TYPICAL WAREHOUSE SECTION**  
1:400 scale

NOTE: REFER TO DRAWING DA - 210 FOR WAREHOUSE 1 SECTIONS

Notes

DO NOT SCALE BY DRAWING DIMENSIONS & LEVELS TO BE VERIFIED PRIOR TO COMMENCEMENT OF WORK WITH FIGURED DIMENSIONS IN PREFERENCE TO SCALED DIMENSIONS. MATERIALS & WORKMANSHIP TO BE IN STRICT ACCORDANCE WITH ALL RELEVANT S.A.A. STANDARDS, B.C.A. AND LOCAL AUTHORITY'S REQUIREMENTS. THIS DRAWING IS SUBJECT TO COPYRIGHT AND IS THE PROPERTY OF THE AUTHOR. THIS DRAWING MUST NOT BE REPRODUCED, COPIED OR USED WITHOUT THE WRITTEN AUTHORITY OF AXIS ARCHITECTURAL Pty Ltd.

Revisions	Date	Description
A	02/11/12	issued for Development Application
B	09/11/12	issued for Development Application
C	19/11/12	issued for Development Application

**LOGOS**

LOGOS PROPERTY GROUP  
Suite 12.02 / 167 Macquarie Street  
Sydney NSW 2000  
T + 61 2 9199 6266 F + 61 2 9231 0948

Project

**Super Retail Group**

Passionate about our people | our products | our performance

PROPOSED WAREHOUSE DISTRIBUTION & OFFICE FACILITIES

SUPER RETAIL GROUP  
LOT 62 / 133 - 145 LENORE LANE, ERSKINE PARK, NSW.  
SECTION 75 S APPLICATION TO MODIFY EXISTING DEVELOPMENT CONSENT - MP 08\_0016

**AXIS ARCHITECTURAL**

4 / 112 Cronulla Street, Cronulla NSW 2230  
p + 02 9523 7858 / m + 04 16 954 4265  
e + david@axisarchitects.com.au

AXIS ARCHITECTURAL Pty Ltd - ABN 18 086 853 316  
Nominated Architect - David McDonald NSW ABN No. 7997

Project path		Drawing title	
Date	Scale	Drawn	Project number
Nov 2012	1:400	AA	120303
Sheet	1 of 1	Drawn number	DA - 210.1
		Issue	C