

---

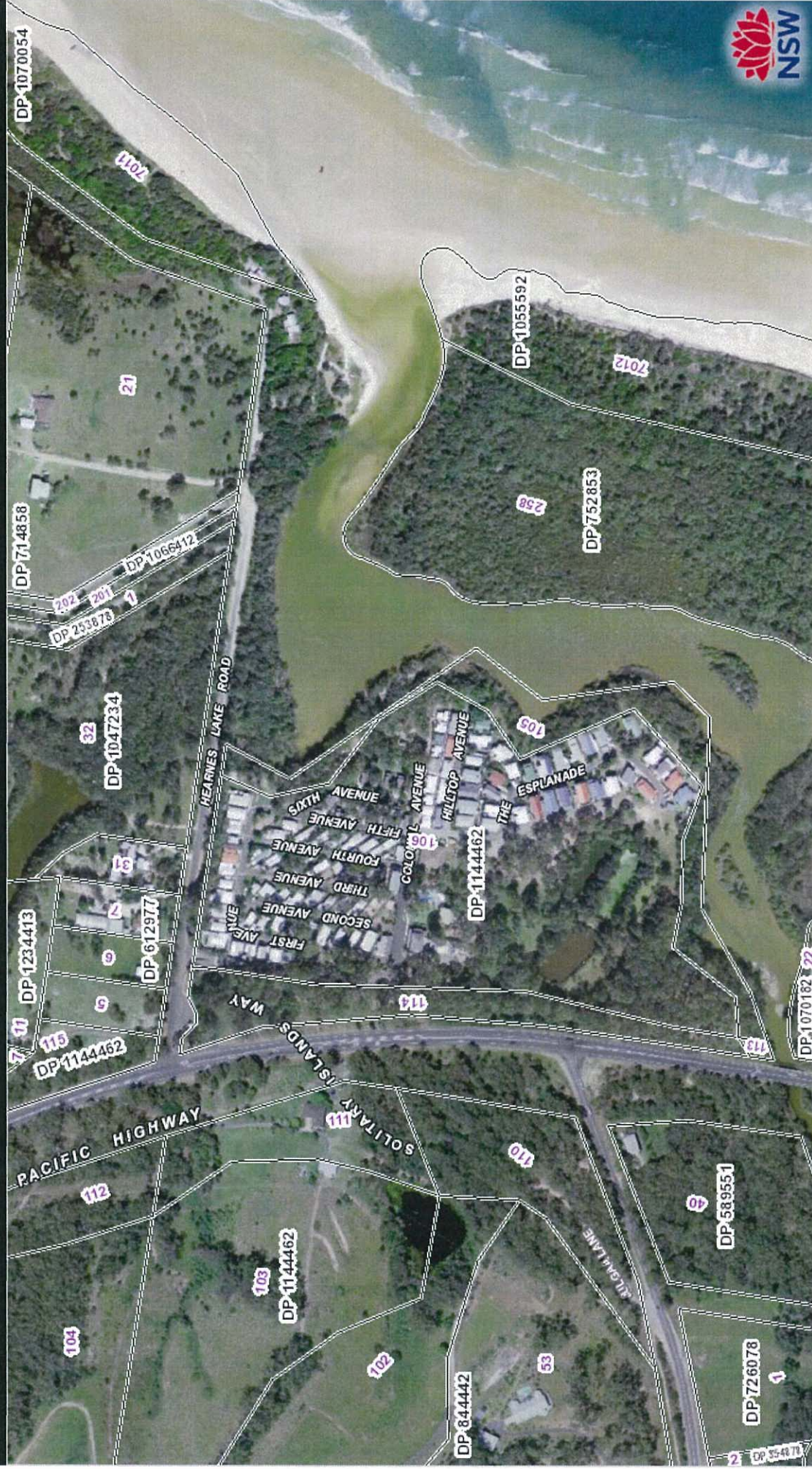
**APPENDIX B**

---

**Appendix B:** Aerial photograph of subject and adjoining land

# Locality Plan

Lot 106 DP 1144462, No. 8 Hearnese Lake Road, Woolgoolga



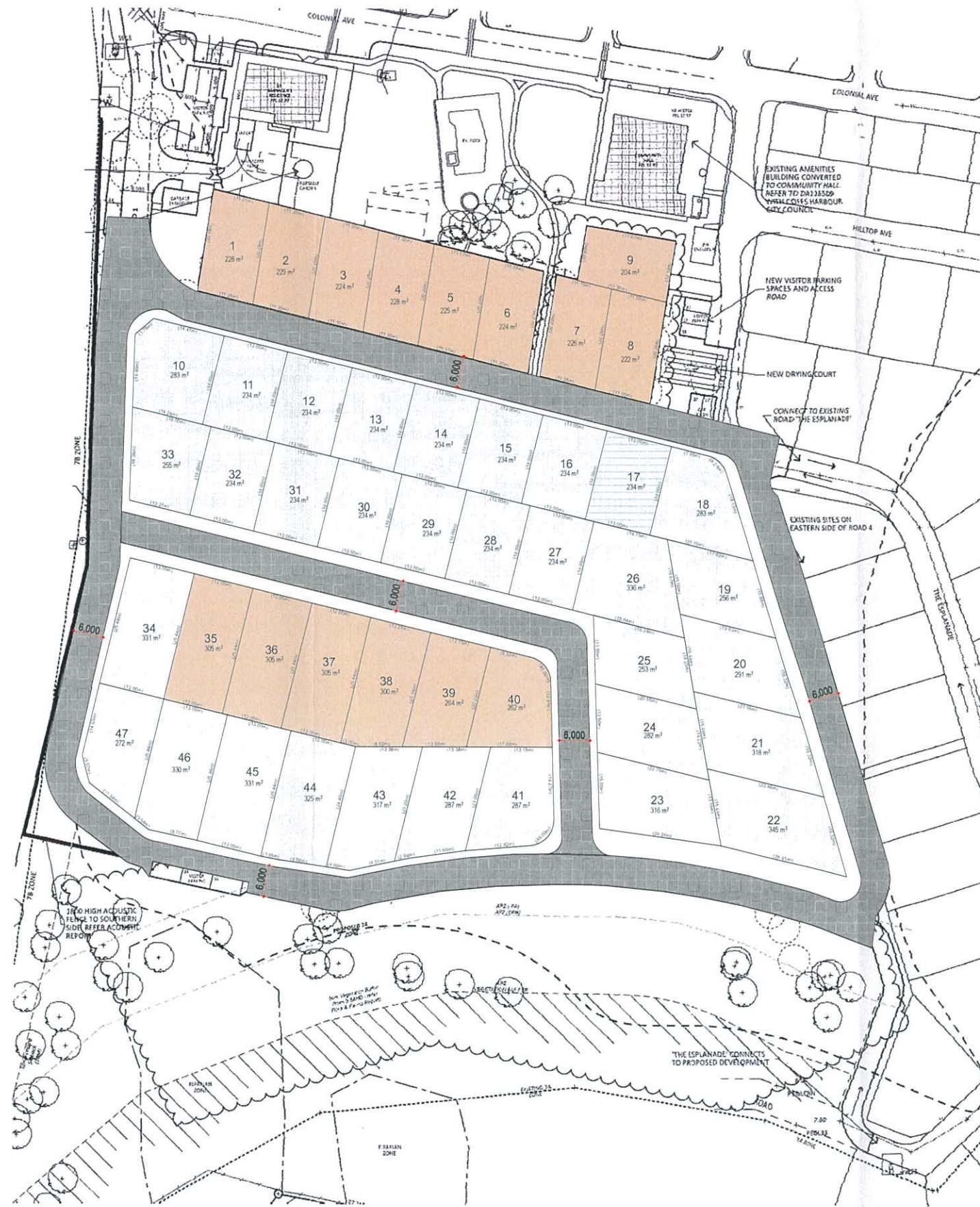
Disclaimer: This report has been generated by various sources and is provided for information purposes only. Spatial Services does not warrant or represent that the information is free from errors or omission, or that it is exhaustive. Spatial Services gives no warranty in relation to the information, especially material supplied by third parties. Spatial Services accepts no liability for loss, damage, or costs that you may incur relating to any use or reliance upon the information in this report.

---

**APPENDIX C**

---

**Appendix C:** Plans of proposed modified development



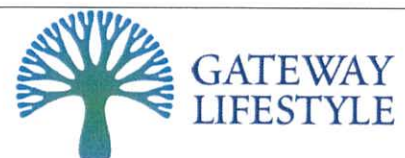
**Legend**

|  |                                       |
|--|---------------------------------------|
|  | Standard House Design (min 13m x 18m) |
|  | Custom House Design (min. 11m x 18m)  |

**Total Yield: 47**

Standard House Designs: 32  
 Custom House Designs: 15

| issue | date     | revision       |
|-------|----------|----------------|
| A     | 26/02/18 | original issue |
|       |          |                |
|       |          |                |
|       |          |                |
|       |          |                |
|       |          |                |



project Gateway Lifestyle The Pines  
 address

drawing title The Pines Concept

job no.

date 02/18

scale 1:1000 @ A3

drawing no. 01  
 issue A

---

**APPENDIX D**

---

**Appendix D:** Notice of physical commencement of works on-site

31<sup>st</sup> May 2017

The General Manager  
Coffs Harbour City Council  
Locked Bag 155  
Coffs Harbour NSW 2450

**Re: Notification of works commencing at 'The Pines' Caravan Park, Woolgoolga**

Please accept the following as confirmation of works commencing at 'The Pines' Caravan Park, 8 Hearnese Lake Road, Woolgoolga, NSW 2456. This pertains to Development Application No. o8\_0005 approved on the 4<sup>th</sup> June 2012.

Works that have been undertaken relate to vegetation protection and include the following performance condition:

- C14 Vegetation Buffer: Fencing has been constructed to protect the rehabilitation area in the south of the site from the development footprint and allow assisted regeneration to be undertaken. When civil works to remove the effluent storage ponds and water storage dam have been completed the vegetation buffer fencing will be realigned where necessary to include the additional areas required for revegetation.

Please don't hesitate to contact me should you require additional information.

Regards



Adam Gosling

M: 0435 868 791

E: adam@eaands.com.au

Environmental Assessments and Solutions Pty Ltd



The Pines, Woolgoolga – 28<sup>th</sup> May 2017



The Pines, Woolgoolga – 29<sup>th</sup> May 2017



The Pines, Woolgoolga – 29<sup>th</sup> May 2017



The Pines, Woolgoolga – 29<sup>th</sup> May 2017



The Pines, Woolgoolga – 29<sup>th</sup> May 2017



The Pines, Woolgoolga – 29<sup>th</sup> May 2017