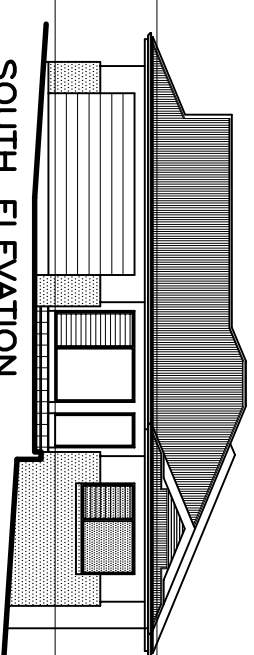


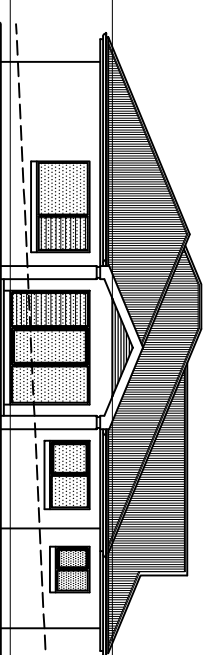
**FLOOR PLAN**  
120.5 SQ M (EXCLUDING GARAGE) 160.5 SQ M (INCLUDING GARAGE)



**SOUTH ELEVATION**

FINISHED CEILING LEVEL  
FINISHED FLOOR LEVEL

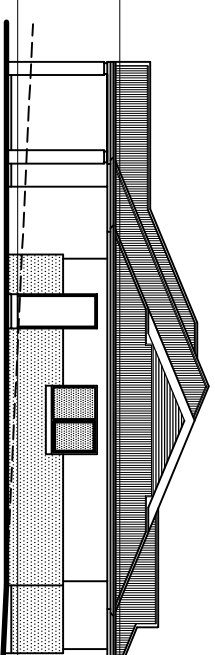
2 700



**NORTH ELEVATION**

FINISHED CEILING LEVEL  
FINISHED FLOOR LEVEL

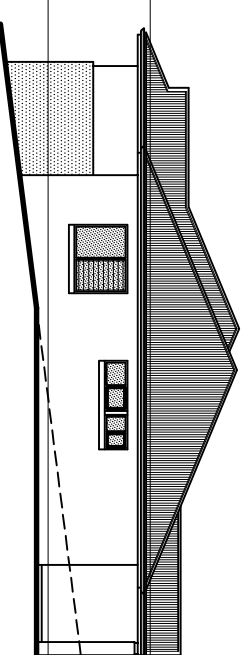
2 700



**WEST ELEVATION**

FINISHED CEILING LEVEL  
FINISHED FLOOR LEVEL

2 700



**EAST ELEVATION**

FINISHED CEILING LEVEL  
FINISHED FLOOR LEVEL

2 700

NO AMENDMENT

© COPYRIGHT 2007  
**ROSS D COLQUHOUN ARCHITECT** PTY LIMITED  
A.C.N. 056 575 841  
Registered Architect Number 3663  
The Royal Australian Institute of Architects

109 WEST HIGH STREET COFFS HARBOUR NSW 2450  
P.O. BOX 364 PHONE (02) 6652 4895 FAX (02) 6652 7878

PROJECT  
TEL/PAT PTY LTD  
**PROPOSED LOW DENSITY HOUSING**  
PACIFIC HIGHWAY MOONLEE

DRAWING  
**LOT 10 : THREE BEDROOM RESIDENCE**  
D.R.G. ISSUE

DRAWN DATE NORTH POINT SCALE AMENDMENT  
RDC JUNE 2007 1 : 100 / 1 : 200  
CAD DISK N° CAD FILE JOB SHEETS  
06-028 06-028-17 R06-028-SK

**17**