

NOTE:

THIS DETAIL SURVEY IS NOT A 'LAND SURVEY' AS DEFINED BY THE SURVEYING ACT, 2002. IF ANY CONSTRUCTION OR DESIGN WORK WHICH RELIES ON CRITICAL SETBACKS FROM THE STREET OR BOUNDARIES IS PLANNED, IT WOULD BE IMPERATIVE TO CARRY OUT FURTHER SURVEY WORK TO DETERMINE THE BOUNDARY DIMENSIONS.

THE POSITION OF THE BOUNDARIES HAVE BEEN CALCULATED FROM THE SURVEY DEFINITION SHOWN ON DP 627179, DP 794575, DP 11519, DP 39988 & DP 55701.

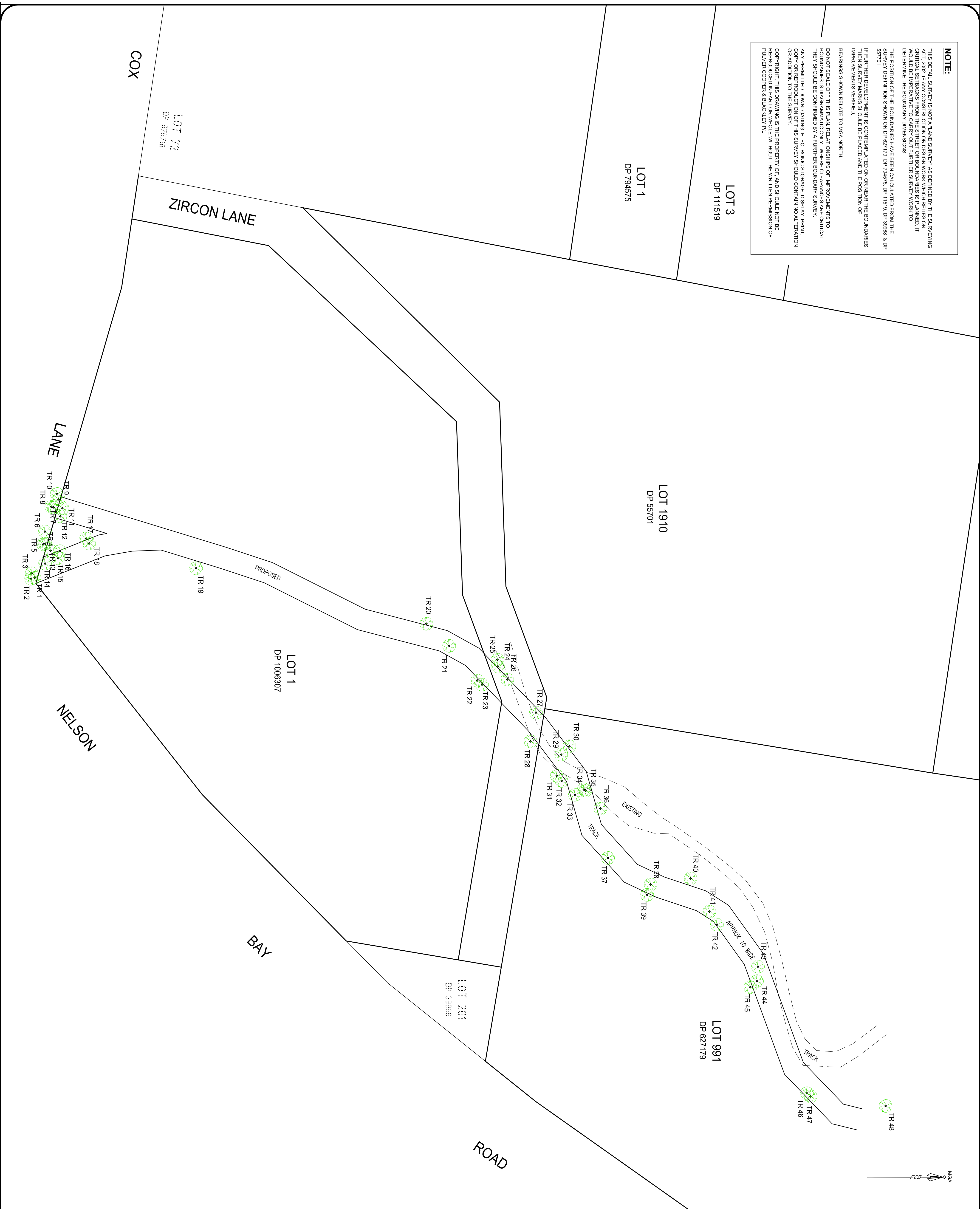
IF FURTHER DEVELOPMENT IS CONTEMPLATED ON OR NEAR THE BOUNDARIES THEN SURVEY MARKS SHOULD BE PLACED AND THE POSITION OF IMPROVEMENTS VERIFIED.

BEARINGS SHOWN RELATE TO MAGN NORTH.

DO NOT SCALE OFF THIS PLAN. RELATIONSHIPS OF IMPROVEMENTS TO BOUNDARIES IS DIAGRAMMATIC ONLY. WHERE CLEARANCES ARE CRITICAL THEY SHOULD BE CONFIRMED BY A FURTHER BOUNDARY SURVEY.

ANY PERMITTED DOWNLOADING, ELECTRONIC STORAGE, DISPLAY, PRINT, COPY OR REPRODUCTION OF THIS SURVEY SHOULD CONTAIN NO ALTERATION OR ADDITION TO THE SURVEY.

COPYRIGHT: THIS DRAWING IS THE PROPERTY OF: AND SHOULD NOT BE REPRODUCED IN PART OR WHOLE WITHOUT THE WRITTEN PERMISSION OF: PULVER COOPER & BLACKLEY PTY LTD.



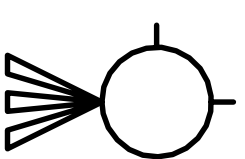
INSTRUCTION NUMBER: 07/07
COMPUTER FILE: 0707_NEW_ENTRANCE_ROAD.DWG
SURVEYED: LB
DESIGNED: N/A
DRAWN: JE
CHECKED: DE
DATUM: N/A
CONTOUR INTERVAL: N/A

REVISIONS	INITIAL	ISSUE	DATE
			29/10/08

CLIENT:

Builde Properties
Pty Ltd. ATF
The George Street
Residential Unit trust
ABN 80017239171

Copyright ©
Pulver Cooper & Blackley Pty.Ltd. 2008
Other than as permitted by the Copyright Act 1968, reproduction, publication or use without prior written permission of Pulver, Cooper & Blackley Pty.Ltd. is prohibited.



PCB
PULVER COOPER & BLACKLEY PTY. LTD.

SURVEYORS
TOWNPLANNERS
CIVIL ENGINEERS
PROJECT MANAGERS

P.O. Box 729 98 LAWES STREET
NEWCASTLE 2300 EAST MAITLAND 2323
Ph (02) 4929 3882 Ph (02) 4934 3026
Fax (02) 4926 2214 Fax (02) 4934 3027

PROPOSED NEW
ENTRANCE ROAD
FROM
COX'S LANE