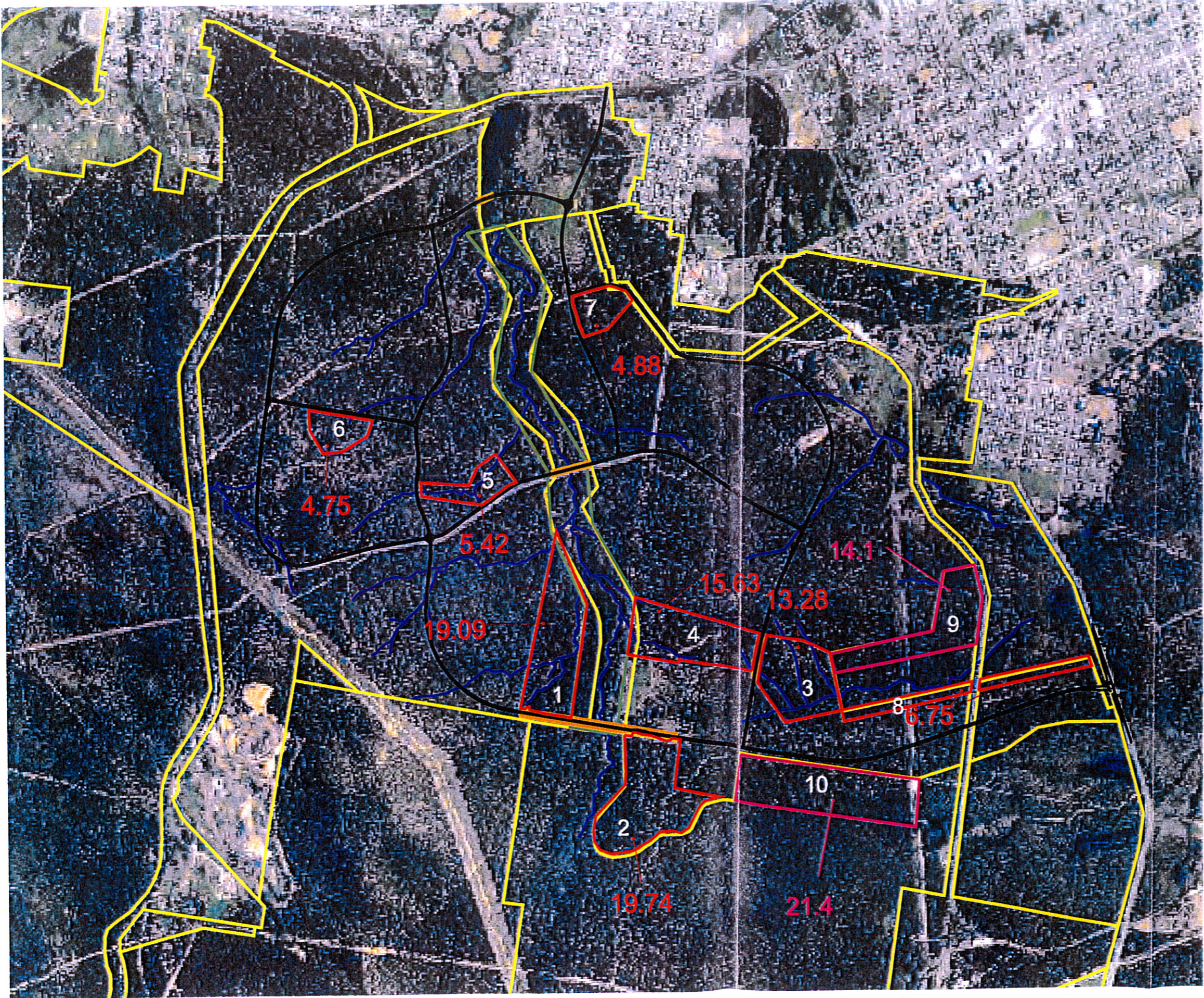


HEZ Deferred Conservation Areas

Copyright NSW National Parks and Wildlife Service May 2004
 This map is not guaranteed to be free from error or omission
 The NSW National Parks and Wildlife Service and its employees
 disclaim liability for any act done on the information in the
 map and any consequences of such acts or omissions



- 20674_modified_dec_additionalconservationareas_250105_region.shp
- Master plan road layout (HSO)
- Creekline corridor fencing
- Potential LEP amendments
- Creekline realignment (HSO version 2)
- Zoning
- Creeklines (D)



Printed By
 R Giddins
 27 January 2005

APPENDIX C: PROPOSED DEVELOPMENT

APPENDIX D: QUALIFICATIONS

Name: CRAIG ANDERSON

Office: RPS HARPER SOMERS O'SULLIVAN

Position in Company: Director - Environment

Qualifications / Memberships:

Bachelor Applied Science (Environmental Assessment & Management) University of Newcastle, NSW (1994)
Currently undertaking Graduate Diploma in Archaeological Heritage through University of New England

Ecological Consultants Association of NSW (ECA)
Planning Institute of Australia (PIA)
Frog and Tadpole Study Group (FATS)
Hunter Birds Observers Club (HBOC)
Bird Observers Club of Australia (BOCA)
Australasian Bat Society (ABS)
Hunter Heritage Network (HHN)

Waterways Authority Boating Licence
NSW Driver's Licence (Class C)
OH&S Induction Training (Green Card)
NPWS Scientific Investigation Licence
NSW Animal Ethics Research Authority

Areas of Expertise:

- Production of complex ecological impact assessment documents
- Detailed understanding of environmental legislation
- Conflict resolution and environmental impact mediation
- Land and Environment Court hearings
- Flora, habitat, and fauna surveys including threatened species
- Bushfire Threat Assessment & Management reporting
- Project Management (including areas outside environmental concern)

Experience Includes:

2001 – current Director - Environment
RPS Harper Somers O'Sullivan, Newcastle.

2000 – 2001 Senior Ecologist & NSW Projects Manager
Wildthing Environmental Consultants, Salt Ash.

1996 – 1999 Ecologist
Wildthing Environmental Consultants, Salt Ash.

1995 – 1996 Ecologist / Environmental Officer
Pulver Cooper & Blackley, Newcastle.

Name: TOBY LAMBERT

Office: RPS HARPER SOMERS O'SULLIVAN

Position in Company: Senior Ecologist

Qualifications / Memberships: B.Env.Sc.

Ecological Consultants Association of NSW (Council member)
NSW Driver's Licence (Class C)
OH&S Induction Training (Green Card)
NPWS Scientific Investigation Licence
NSW Animal Ethics Research Authority

Areas of Expertise:

- Environmental Impact Assessment and mediation
- Flora, fauna and habitat survey method, design and identification
- Detailed understanding of legislation and threatened species issues
- Terrestrial fauna surveys
- Project management

Experience Includes:

Dec 2005 - Current	Senior Ecologist RPS Harper Somers O'Sullivan, Broadmeadow, NSW
Mar 2005 - Nov 2005	Senior Project Manager Cumberland Ecology, Epping, NSW
Mar 2004 - Mar 2005	Principal Consultant – Co-founder Keystone Ecological, Kariiong, NSW
Jan 1998 - Jan 2004	Ecologist / Senior Ecologist Conacher Travers Environmental Consultants, Somersby, NSW
June 1997 - Dec 1997	Environmental Scientist Australian Defence Industries (ADI), St Mary's, NSW
Early 1997	Field Assistant Anne Clements and Associates, North Sydney, NSW
1996	Research Assistant University of Newcastle, Callaghan, NSW

Name: DEBORAH LANDENBERGER

Office: RPS HARPER SOMERS O'SULLIVAN

Position in Company: Ecologist/ Botanist

Qualifications / Memberships: B. Sc (Hons)

Australian Plant Society
Australian Ecological Society
Australasian Native Orchid Society
NSW Driver's Licence (Class C)
OH&S Induction Training (Green Card)
NPWS Scientific Investigation Licence
NSW Animal Ethics Research Authority

Areas of Expertise:

- Expert Botanist
 - Flora identification and habitat assessment
 - Targeted threatened flora surveys
 - Delineation and mapping of vegetation communities
 - Endangered Ecological Community (EEC) assessment
- Project Management and quote preparation
- Fauna habitat identification
- Experience with GPS/GIS for project design and mapping
- Environmental reporting and assessment
- Detailed understanding of environmental legislation

Experience Includes:

June 2006 – Current Ecologist/ Botanist
RPS Harper Somers O'Sullivan, Broadmeadow, NSW

Mar 2005 – Jun 2006 Botanist
Conacher Travers, Gosford, NSW

Dec 2004 – Mar 2005 Research Assistant/Casual Demonstrator
University of Newcastle, Newcastle, NSW