

NOTES:
 FIGURED DIMENSIONS TO BE TAKEN IN PREFERENCE TO SCALED READINGS
 IF IN DOUBT, ASK

1. REDUCED LEVELS TAKEN FROM AS BUILT DOCUMENTATION, TO BE VERIFIED ON SITE

PARKING REQUIREMENTS

MINIMUM REQUIREMENTS:

WAREHOUSE COMPONENT	17899m ²
=1 SPACE PER 300m ² GFA	60 spaces
MANUFACTURING COMPONENT	9241m ² =
=1 SPACE PER 75m ² GFA	123 spaces
OFFICE COMPONENT	744m ² =
=1 SPACE PER 30m ² GFA	25 spaces
TOTAL REQUIRED:	208 spaces
TOTAL PROVIDED:	105 spaces
STAGE 2	103 spaces
(future, including 2 disabled)	208 spaces
TOTAL	208 spaces

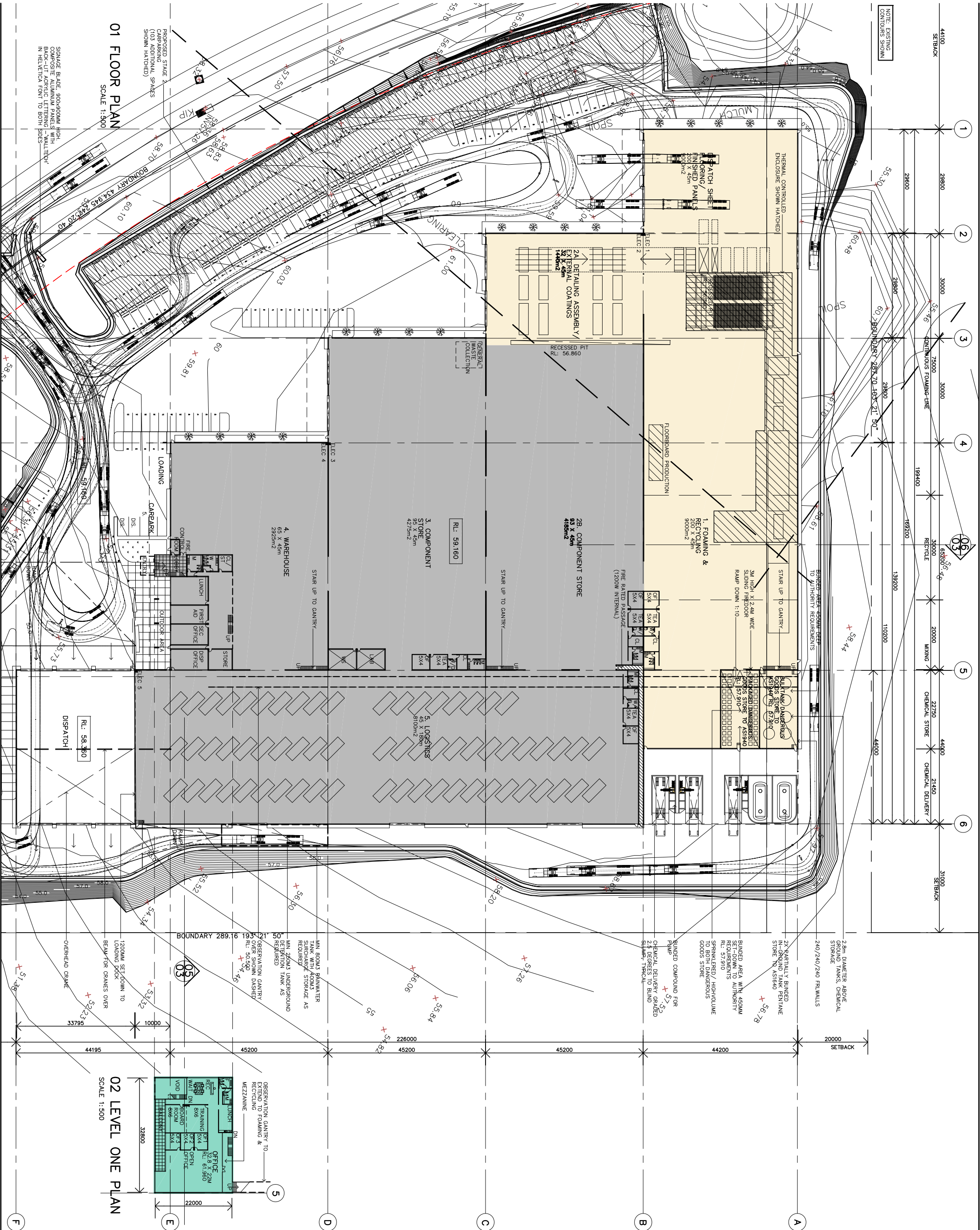
DA 1	ISSUE FOR DA	15.12.07
P	HI ISSUE TO CONSULTANTS	25.7.07
P	G ISSUE TO CONSULTANTS	17.10.06
P	F ISSUE TO CONSULTANTS	28.8.06
P	E ISSUE TO CONSULTANTS	08.8.06
P	D ISSUE TO CONSULTANTS	13.7.06
P	C TURNING PATHS AMENDED	8.6.06
P	B LANDSCAPING/PARKING AMENDED	19.4.06
P	A R.L.S AMENDED	APR '06
P	- PRELIMINARY ISSUE	APR '06

Contractors must verify all dimensions on site prior to starting any work or making any shop drawings. Figured dimensions are to be taken in preference to scale readings. This drawing is copyright and the property of Justin Long Design.



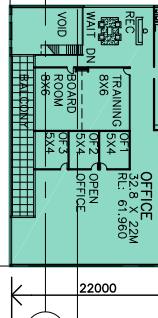
Justin Long design
 ARCHT SPACE PLANNING INTERIOR DESIGN
 Suite 2, Level 4
 3rd Floor, 3rd Street
 Surry Hills, NSW 2010
 Tel: 02 9699 8570
 Fax: 02 9699 8578
 Mob: 0419 288 728
 Email: justin@jldesign.com.au
 www.jldesign.com.au

client	WIPS MANAGEMENT
Project	PROPOSED NEW WAREHOUSE DEVELOPMENT
site	HEZ SPINE ROAD LOT 7 DP 1037092
drawing	FLOOR PLANS
scale	1:500 @ A1
date	10-JULY-2007
drawing	MIN. AL. SH
drawing no.	A02
issue	DA
revision	1



01 FLOOR PLAN
 SCALE 1:500

02 LEVEL ONE PLAN
 SCALE 1:500



PROPOSED STAGE 2 CARPARKING (103 ADDITIONAL SPACES SHOWN HATCHED)
 STORAGE BLADE 900x600MM HIGH COMPOSITE ALUMINUM PANELS WITH BACK-LIT ACRYLIC LETTERING "WALLTECH" IN HELVETICA FONT TO BOTH SIDES

MIN. 800'S RAINWATER TANK WITH ROOMS SURCHARGE STORAGE AS REQUIRED
 MIN. 200'S UNDERGROUND DETENTION TANK AS REQUIRED
 OBSERVATION GANTRY OVER SHOWN DASHED R.L. 57.92
 1200MM SET-DOWN TO LOADING DOCK BEAM FOR CRANES OVER OVERHEAD CRANE