

GULLEN RANGE WIND FARM

Annual Environmental Management Report 2020 **Gullen Range Wind Farm**

Prepared for submission to the NSW Department of Planning and Environment




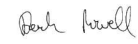

Report Details

Project Name:	Gullen Range Wind Farm
Project Application Number	07_0118 (MOD 1)
Project Type	Electricity Generation - Wind
Project Phase	Operation
Compliance Report	Annual Environmental Management Report
Compliance Reporting Period	23/12/2019 to 22/12/2020
Compliance Report Declaration by	Asset Manager: Leo Pearce (See Appendix A)

Revision History

Revision No.	Prepared By	Description	Date
0.1	Leo Pearce	Draft for internal review	22/03/2021

Document Acceptance

Action	Name	Signed	Date
Prepared by	Leo Pearce	 Leo Pearce (Mar 23, 2021 21:57 GMT+11)	23/03/2021
Reviewed by	Derek Powell		23/03/2021
Approved by	Weiwei Shi		23/03/2021

Glossary of Terms

AEMR	Annual Environmental Management Report
ARI	Average Recurrence Interval
BAN	Bannister Wind Turbine Group
BBAMP	Bird and Bat Adaptive Management Plan
BL&A	Brett Lane & Associates
CCC	Community Consultative Committee
CEMP	Construction Environmental Management Plan
CEP	Community Enhancement Program
CHP	Compensatory Habitat Package
CIP	Community Information Plan
CPVP	Conservation Property Vegetation Plan
DECC	Department of Environment and Climate Change
DEMP	Decommissioning Environmental Management Plan
DP	Development Plan
DPE	Department of Planning & Environment
DUAP	Department of Urban Affairs & Planning
EA	Environmental Assessment
EPA	Environment Protection A
EPL	Environment Protection Licence
ER	Environmental Representative
ERP	Emergency Response Plan
GPS	Global Positioning System
GRWF	Gullen Range Wind Farm
HSE	Health Safety & Environment
JSEA	Job Safety & Environment Assessment
KIA	Kialla Wind Turbine Group
OEH	Office of Environment & Heritage
OEMP	Operational Environmental Management Plan
OMP	Operational Management Plan
PAC	Planning Assessment Commission
PIRMP	Pollution Incident Response Management Plan
RDA	Regional Development Australia
RFS	Rural Fire Service
RMS	Roads & Maritime Services
RTA	Road Transport Authority
SA	Site Assessment
SCADA	Supervisory control and data acquisition
SDS	Safety Data Sheet
SELLS	South East Local Land Services
SEREE	South East Region of Renewable Energy Excellence
STEM	Science Technology Engineering & Mathematics
ULSC	Upper Lachlan Shire Council
WHO	World Health Organisation

Contents

1.0	Introduction.....	5
1.1	Project Details.....	5
1.2	Approvals.....	5
1.3	Compliance Reporting Period.....	5
1.4	Project & Site Description	5
1.5	Operations Summary.....	7
2.0	Compliance Status Summary.....	7
2.1	Compliance Statement	7
2.2	Landscaping	7
2.3	Shadow Flicker.....	7
2.4	Flora & Fauna	7
2.4.1	Birds & Bats	7
2.4.2	Compensatory Habitat Package – Offset Area	8
2.4.3	Rehabilitation	9
2.5	Bushfire Risk & Emergency Services.....	9
2.6	Chemical Storage & Spill Management	9
2.7	Soil & Water Quality	9
2.8	Waste Generation & Management	9
2.9	Noise	9
2.10	Water Management	9
2.11	Community	9
3.0	Non-Compliances	11
4.0	Incidents	11
5.0	Complaints.....	11
6.0	Actions required from the previous Annual Review	11
7.0	Activities to be completed in the next period.....	12

Appendices

Appendix A – Compliance Report Declaration

Appendix B – Review of Compliance – Project Approval

Appendix C – Review of Compliance – Statement of Commitments

Appendix D – Review of Compliance – Environmental Protection Licence

1.0 Introduction

Gullen Range Wind Farm (GRWF) has reviewed the environmental performance of the GRWF for the 2020 Annual Environmental Management Report (AEMR) period. This report documents the finding of the review.

1.1 Project Details

Name: Gullen Range Wind Farm

Application Number: 07_0118 (MOD 1)

Project Address: Storriers Lane, Bannister, NSW

Project Phase: Operation

Asset Manager: Leo Pearce; 0428 288 737; leo.pearce@bjceaustalia.com.au

1.2 Approvals

GRWF was approved as a Major Project under Part 3A of the NSW Environmental Planning & Assessment Act 1979 in August 2010. The approval is subject to a number of conditions, including compliance with a Statement of Commitments and an Operational Environmental Management Plan (OEMP). An OEMP was prepared as a condition of the Project Approval. The OEMP commenced 23/12/2014 and expires 22/12/2039. A modification application (Mod1) for adjustments to wind turbine locations was approved by the Planning Assessment Commission (PAC) in September 2015.

Wind Farms approved under Part 3A are required to hold an Environmental Protection Licence (EPL). An EPL was issued by the Environment Protection Authority (EPA) in October 2014.

1.3 Compliance Reporting Period

The reporting period for this AEMR is 23/12/2019 to 22/12/2020.

1.4 Project & Site Description

The wind farm is located on a north-south running ridge system of the Great Dividing Range between Gunning, Crookwell and Goulburn in NSW's southern tablelands (Figure 1). The wind farm extends over a distance of approximately 25 kilometres from approximately 6 kilometres south of Crookwell to its southern extent about 10 kilometres north of Breadalbane. GRWF is approximately 20 kilometres west of Goulburn.

The wind farm became fully operational in December 2014 and includes the following project elements:

- 73 wind turbines
 - 56 GW100-2.5MW – (100 metre rotor diameter)
 - 17 GW82-1.5MW – (82 metre rotor diameter)
- A 33kV/330kV substation for connection to the National Electricity Grid
 - 33kV/330kV Substation and 33kV switchyard
 - 330kV switchyard owned and operated by TransGrid

The wind farm comprises of four wind turbine groups, Kialla, Bannister, Pomeroy and Gurrundah. The 73 wind turbines are distributed as listed below:

- Kialla Group – 2 wind turbines
- Bannister Group – 30 wind turbines
- Pomeroy Group – 23 wind turbines
- Gurrundah Group – 18 wind turbines
- A 33kV/330kV substation is located between the northern and southern groups (between Bannister and Pomeroy). The substation was extended during the reporting period to facilitate the connection

of Biala Wind Farm to the electricity network. These works were undertaken under a separate approval.

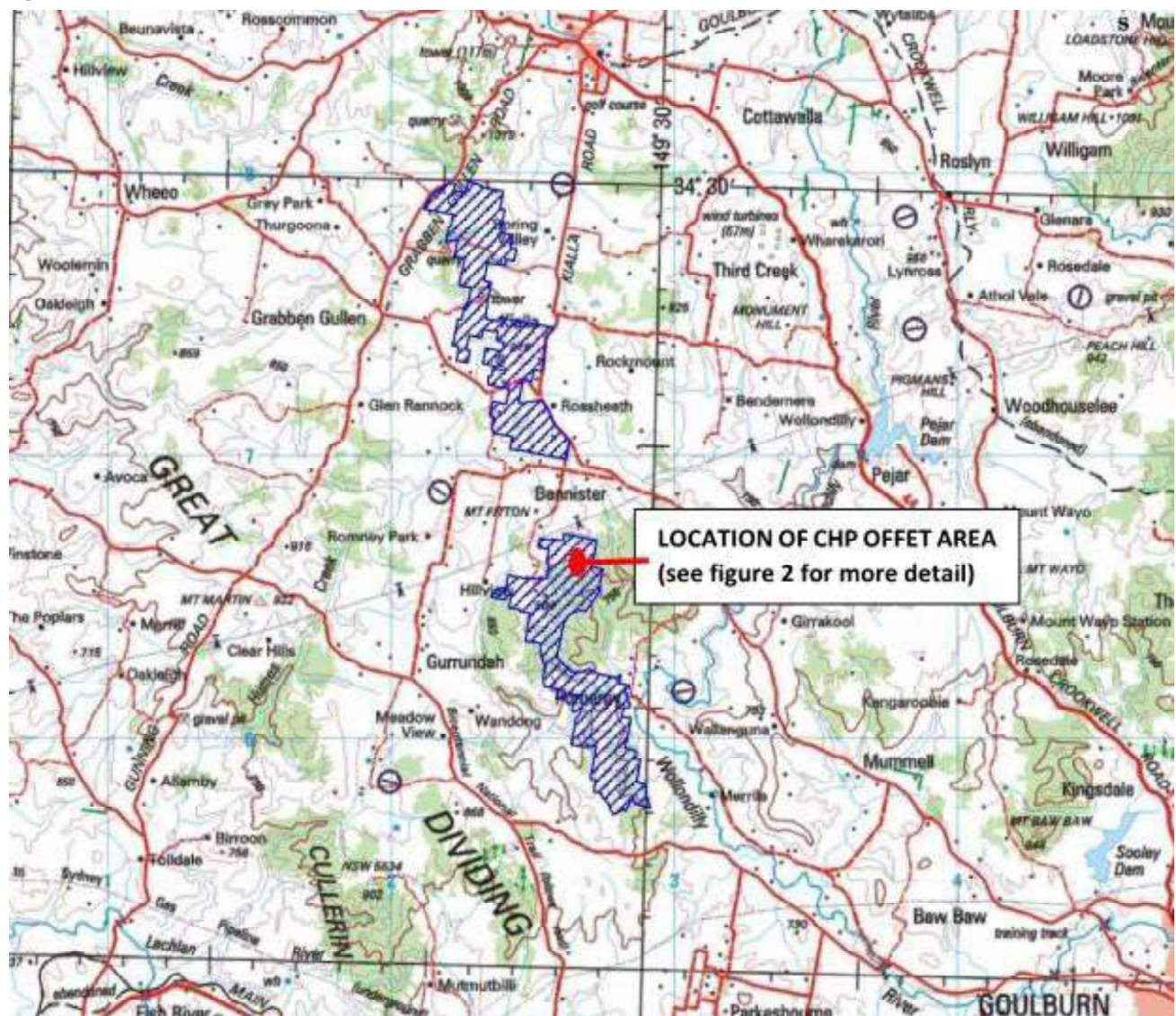
The highest wind turbines are at elevations of approximately 1,000 metres above sea level. The rural land, where the project is located and in surrounding areas, is predominantly used for grazing of sheep and cattle but also includes rural residential lots.

An Environmental Representative (ER) approved by the Secretary has been engaged by GRWF to be the principal point of advice in relation to the environmental performance of the project. The ER conducts regular inspections of the site to monitor the environmental performance.

GRWF has an approved OEMP setting out processes for the management of environmental impacts during the operation and routine maintenance of the wind farm as required by the project Conditions of Approval (CoA) 7.4 and 7.5.

GRWF has an approved Compensatory Habitat Package (CHP) and Offset Area, as required by Condition 2.35 of the Project Approval. The Offset Area is approximately 122 hectares and seeks to protect and enhance an area significant conservation value. The CHP is implemented via a Conservation Property Vegetation Plan (CPVP).

Figure 1 - Site Location



1.5 Operations Summary

GRWF is operated as a manned electricity generator providing up to 165.5MW of renewable power at full capacity into the 330kV network owned by TransGrid. The following maintenance operations are conducted on the Wind Farm:

- Switching wind turbines on/off depending on the suitability of the wind resource for generating electricity.
- Maintenance of wind turbines (nacelles, rotor blades, towers, etc)
- Maintenance of substations (part of which is owned and managed by TransGrid as a separate facility and will have its own OEMP).
- Maintenance of other electrical infrastructure, including underground cables.
- Maintenance of access roads and other civil infrastructure.
- Weed Control activities on the hardstand areas of the wind turbines and access tracks
- Weed Control activities in the Compensatory Habitat Package (CHP) Offset Area.
- Feral Animal Control activities in the CHP Offset Area
- Vegetation improvement activities in the CHP Offset Area

2.0 Compliance Status Summary

The following is a summary of the environmental performance of the GRWF during the AEMR period. It considers the performance of the project against the Project Approval and Environmental Licence.

A detailed assessment of the Project Approval and its Statement of Commitments, as well as the EPL is contained in Appendix B, C and D.

2.1 Compliance Statement

Were all conditions of the approval(s) complied with?	
Project Approval: 07_0118 (MOD 1) and Statement of Commitments	No
Environmental Protection Licence	Yes

2.2 Landscaping

Landscape maintenance requirements were completed in 2018. There have not been any complaints received with regard to landscaping during the 2020 AEMR reporting period.

2.3 Shadow Flicker

Condition 2.7 of the Project Approval requires that shadow flicker arising from the operation of the project shall not exceed 30 hours/annum at any residence not being an associated residence. There have been no complaints received with regard to shadow flicker since 2015.

2.4 Flora & Fauna

2.4.1 Birds & Bats

Condition 2.33 of the Project Approval requires the Proponent not to operate wind turbines POM-3, POM-4, POM-6, POM-7 between one hour before sunset and one hour after sunrise during the period 30 November to 31 March to prevent any adverse impact on Powerful Owl dispersion. This condition continues to be adhered to and there have not been any identified Powerful Owl deaths on or near the wind farm during the AEMR reporting period.

Wind farm personnel continue to follow the incidental carcass protocol detailed within the revised BBAMP and report any bird or bat carcass finds detected. There was one reported Wedge-tailed Eagle strike in 2020.

2.4.2 Compensatory Habitat Package – Offset Area

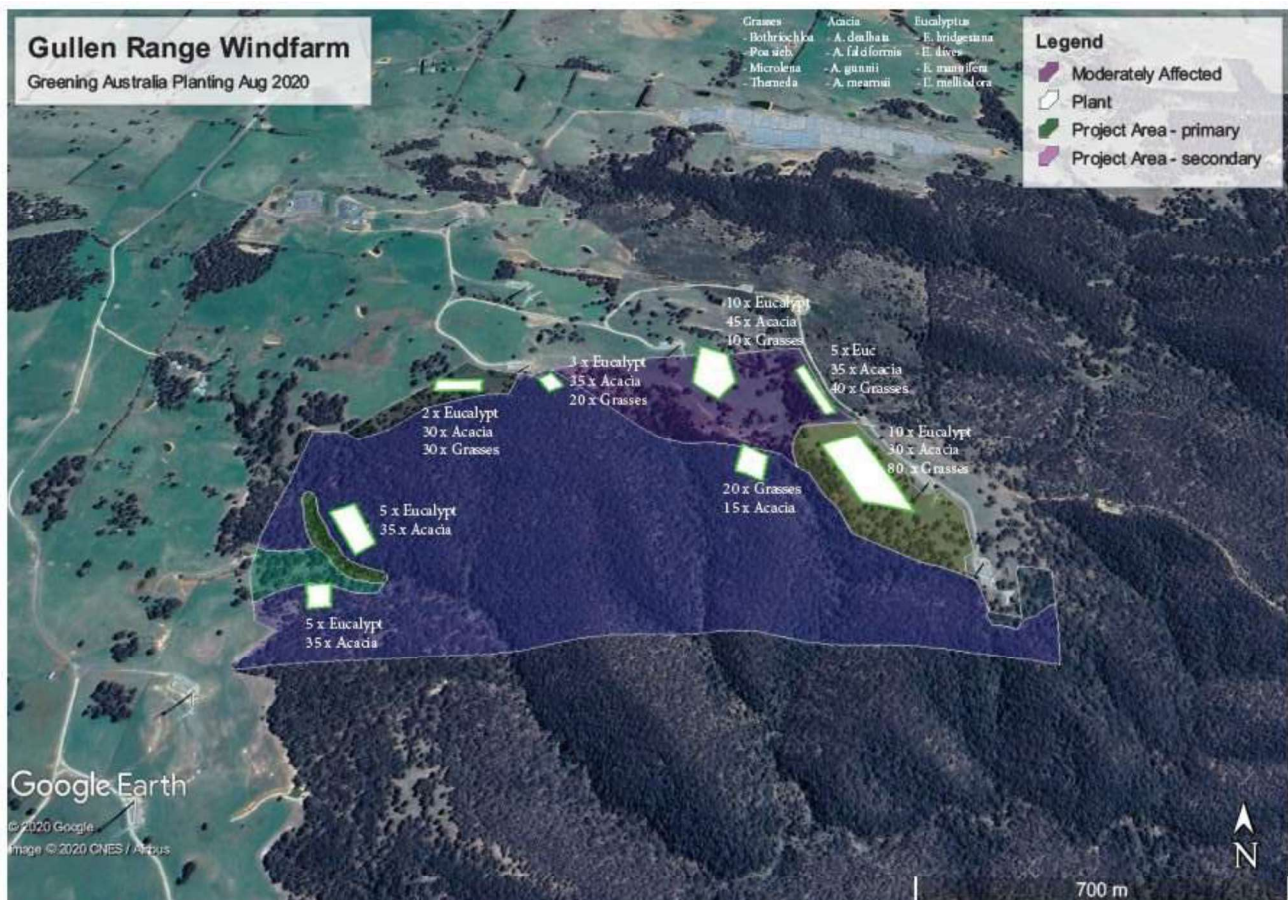
A CHP which offsets habitat lost as a result of the construction of the wind farm has been established and the corresponding area of land is being managed under the CHP requirements. The CHP offset area is located in the Pomeroy Section of the wind farm, as shown in Figure 2.

A CHP forms part of the OEMP. The CHP was approved by the DPE in 2012. The CHP was updated and reapproved by the DPIE in August 2016.

The CPVP gives effect to the CHP.

The CHP Annual Monitoring Report 2020 includes weed and biometric surveys and makes recommendations with regard to grazing exclusions, weed and pest control, ground cover seeding and understorey planting. The report noted a decrease to Feral Goat and Cotton-tailed Rabbits, with zero being identified and an increase in numbers of Feral Pig, Feral Cat, Cape Hare and Red Fox compared to the previous year. A slight decrease in Fallow Deer was recorded and they remain the most widespread species occurring within the Offset Area. The report recommended ongoing control efforts should be maintained to minimise feral pests. Weed control efforts are ongoing and recommended to continue. Planting efforts over the past years are recommended to be maintained. The offset report was submitted to OEH, DPE and SE Local Land Services (via email on 28 January 2020). The report is available on the GRWF website.

Figure 2 - Compensatory Habitat Package Area



2.4.3 Rehabilitation

Some of the steep rocky embankments around the wind farm have not reached the 70% revegetation criteria set in the rehabilitation protocol of the Flora & Fauna Management Plan (which formed part of the CEMP). GRWF is reviewing options for long-term management of these embankments, with the advice of the Environmental Representative. This is not considered a non-compliance as the overall objective of the rehabilitation protocol is to re-establish stable surfaces resistant to erosion and weed ingress and the embankments are meeting this objective.

2.5 Bushfire Risk & Emergency Services

There were no bushfire incidences during the AEMR reporting period. GRWF is organising for the local Rural Fire Service (RFS) to attend site to re-familiarise them with its features.

The high voltage power line easement is regularly inspected for vegetation encroachment and thermal elevations.

2.6 Chemical Storage & Spill Management

All dangerous goods and combustible liquids on site are required to be stored and handled in accordance with the Australian Dangerous Goods Code, all relevant Australian Standards, the EPA's Environmental Protection Manual Technical Bulletin Bunding and Spill Management and the Storing and Handling liquids: Environment Protection, Participants Manual: Appendix: Technical Considerations (DECC, 2007). During the AEMR review, chemical storage was reviewed and found to be generally in accordance with these requirements.

There were no incidences of spills during the 2020 reporting period.

2.7 Soil & Water Quality

There were no incidents of the pollution of waters during the 2020 AEMR reporting period. A Pollution Incident Response Management Plan (PIRMP) is maintained for the project and was reviewed in January 2020.

2.8 Waste Generation & Management

All waste on site is assessed and classified in accordance with Waste Classification Guidelines. Certified contractors are used to remove waste oil, general waste and recyclable material created from the operation of the wind farm.

2.9 Noise

GRWF is operated in accordance with a Noise Management Plan and Noise Compliance Plan.

There were two noise complaints received during the 2020 AEMR reporting period, described further in section 5 of this report.

2.10 Water Management

GRWF does not have a Water Licence and does not use any significant water for the operation of the wind farm.

2.11 Community

GRWF engages with the community through a variety of mechanisms, as summarised in the following section.

GRWF has established a Community Consultative Committee (CCC) which met two times in 2020. The aim of the committee is to provide a forum for open discussion between representatives of the wind farm, the community, Upper Lachlan Shire Council, Goulburn Mulwaree Council and other stakeholders on issues directly relating to the wind farm, including its environmental performance and community relations, and to keep the community informed on these matters.

In 2019, wind farm guided tours were offered approximately every two months, providing members of the public an opportunity for a half-day tour of GRWF, along with some educational information. However, in response to the COVID-19 pandemic, the 2020 public tours were suspended. GRWF is looking forward to running the guided tours again, as soon as it is considered COVID-safe to host the public at the wind farm. In the meantime, GRWF has set up an online registration page on their website for members of the public who wish to be notified as soon as the public tours recommence. The team were able to join a local community group's (Upper Lachlan Landcare) online school holiday workshop in 2020 called 'Blowing in the wind' and talk about the wind farm to parents and students.

In 2020, GRWF returned as an Industry Partner in the STEM Industry School Partnership Program (SISP). Funded by the Department of Education and coordinated locally by Regional Development Australia Southern Inland, the SISP is a program linking industry with local schools focused on how STEM skills and knowledge can solve real-world problems.

As the school students were unable to visit the wind farm in 2020 due to the COVID-19 pandemic, GRWF adapted its approach and instead took students on a 'virtual' tour of the wind farm, conducting online presentations for three schools: Crookwell Public School, St Mary's Primary School and Goulburn High School.

In mid-2020, GRWF, together with the local schools, saw an opportunity to organise a blade viewing event at the nearby Crookwell Showgrounds. Under strict COVID-safe protocols, Year 5/6 students from Crookwell Public School and Year 8 students from Crookwell High School enjoyed a guided educational tour around a wind turbine blade.

GRWF has a Community Enhancement Program (CEP) which annually provides approximately \$70,000 to a Community Fund and approx. \$70,000 to a Clean Energy Program. The Community Fund provides grants to projects or initiatives that benefit the community within 10km of the wind farm. Applications for funding are invited once a year and five projects were awarded funding in 2020. GRWF offered a free grant writing workshop to assist community members with preparing grant applications for the Community Fund and/or other funding programs. In previous years, GRWF attended events organised by Community Fund recipients. However, due to the COVID-19 pandemic, grant recipient events were not held in 2020.

The Clean Energy Program (or CLEP) provides financial contributions towards implementing clean energy improvements in the community. Under the CLEP, residents within five kilometres of a wind turbine can apply for funding for clean energy efficiency improvements on their homes. The Clean Energy Program comprises two stages. The first step is an energy audit, which helps the resident identify the best way to improve energy efficiency in their home. The second step is applying for the energy efficiency grant. Since the CLEP commenced, 126 homes have completed Stage 1 of the program by the end of 2020. A total of 67 homes have completed Stage 2 of the program and now have energy improvement measures installed, such as solar panels, solar hot water systems or better roof or wall insulation thanks to grants valuing approximately \$434,000. A further 11 homes have been approved for Stage 2 grants. During 2020 itself, eleven Stage 2 grants were approved, and 16 applicants completed Stage one of the Program.

In 2020, GRWF sponsored local community groups, local schools and sporting groups as listed below:

- 142nd Crookwell Show - Red Ribbon Sponsor – GRWF provided an information stall at the event.
- Crookwell Public School Presentation Ceremony Student Prize

- Crookwell Men’s Bowling Tournament and signage – The Gullen Triple Classic
- Goulburn Railway Bowling Club Tournament – Rose Tournament
- Gunning Arts Festival FlashWrite Project
- Crookwell Public School Parents and Citizen’s Association (P&C) Christmas hamper raffle
- Crookwell Junior Devils Rugby League Club

Information about the GRWF is regularly updated on the website for the community to access. In 2020, 51 news updates were posted to the website. The website has also been a key way GRWF has kept the public informed about the wind farm’s COVID-19 response, with a dedicated webpage for COVID-19 information being set up in 2020. Other community engagement channels used by GRWF include: a toll-free 1800 number, mail (email or hard copy), website contact us form, media releases, newspaper adverts and face to face meetings.

3.0 Non-Compliances

There was one item of non-compliance identified during the 2020 AEMR reporting period. Noted at Appendix B, Item 5.4

The project contact details were not advertised as required every 6 months in a newspaper circulating in the locality, due to an administration error. An advert was immediately issued on 20 January 2021 and a reminder has been established in our compliance management system for future advertising requirements.

The telephone number, postal address, and email address for the project were each operational and available on the project website throughout the AEMR reporting period.

4.0 Incidents

There were no environmental incidents reported during the 2020 AEMR reporting period.

5.0 Complaints

There were two complaints recorded during the 2020 AEMR reporting period. Both complaints were from nearby neighbours regarding noise from the wind turbines. In both cases the wind turbines were investigated, and no unusual noises were identified. In both cases the complainants explained that the noise was the general wind turbine noise that they hear when the wind is blowing in their direction and the noise had not increased since the commencement of operation in 2014. The complainants were informed of the actions taken and the compliance requirements for the development/operation of the wind farm, no further complaints were received.

A record of community complaints is maintained on the project website.

6.0 Actions required from the previous Annual Review

The 2019 AEMR found the project was compliant with the requirements of the Project Approval (including the Statement of Commitments), and Environmental Protection Licence. The review did not identify any recommendations for on-going environmental compliance.

The 2019 AEMR identified the following actions that would be undertaken during the 2020 AEMR period:

- Weed control.
- Seeding and planting activities in the CHP Offset Area.
- Feral animal control activities in the CHP Offset Area.

- Inspection of nesting boxes to ensure they are in place and in good condition.
- Maintenance activities as per the Management Plans.

This review found that all these activities had been completed.

7.0 Activities to be completed in the next period

Ongoing operational activities, including:

- Weed control.
- Seeding activities in the CHP Offset Area.
- Feral animal control activities in the CHP Offset Area.
- Inspection of nesting boxes to ensure they are in place and in good condition.
- Maintenance activities as per the Management Plans

Appendix A

Compliance Report Declaration

Compliance Report Declaration Form

Project Name	Gullen Range Wind Farm
Project Application Number	07_0118 (MOD 1)
Description of Project	Gullen Range Wind Farm and associated infrastructure
Project Address	Storriers Ln, Bannister NSW 2580
Proponent	New Gullen Range Wind Farm Pty Ltd
Title of Compliance Report	Annual Environmental Management Report 2020 – Gullen Range Wind Farm
Date	23 March 2021

I declare that I have reviewed the relevant evidence and verified the contents of the attached Compliance Report and to the best of my knowledge:

- The Compliance Report has been prepared in accordance with all relevant conditions of consent;
- The Compliance Report has been prepared in accordance with the Compliance Reporting Post Approval Requirements;
- The findings of the Compliance report are reported truthfully, accurately and completely;
- Due diligence and professional judgement have been exercised in preparing the Compliance Report; and
- The Compliance Report is an accurate summary of the compliance status of the development.

Notes:

- Under Section 10.6 of the Environmental Planning and Assessment Act 1979 a person must not include false or misleading information (or provide information for inclusion in) a report of monitoring data or an audit report produced to the Minister in connection with the audit if the person knows that the information is false or misleading in a material respect. The proponent of an approved project must not fail to include information in (or provide information for inclusion in) a report of monitoring data or an audit report produced to the Minister in connection with an audit if the person knows that the information is materially relevant to the monitoring or audit. The maximum penalty is, in the case of a corporation, \$1 million and for an individual, \$250,000; and
- The Crimes Act 1900 contains other offences relating to false and misleading information: section 307B (giving false or misleading information – maximum penalty 2 years' imprisonment or 200 penalty units, or both).

Name of Authorised Reporting Officer	Leo Pearce
Title	Asset Manager
Signature	 <small>Leo Pearce (Mar 23, 2021 21:57 GMT+11)</small>
Qualification	Maintenance Engineer
Company	New Gullen Range Wind Farm Pty Ltd
Company Address	Level 21, 1 York Street, Sydney, NSW 2000

Appendix B

Review of Compliance Project Approval

Compliance Requirement	Development Phase	Monitoring Methodology	Evidence / Findings
1. ADMINISTRATIVE CONDITIONS Terms of Approval 1.1. The Proponent shall carry out the project: a) generally in accordance with the EA; b) the statement of commitments; and c) conditions of this approval. Note: The general layout of the project is depicted in the figure in Appendix 1.	All	■ AEMR	Compliant The review found the Project to be compliant with this condition, as documented in this report.
1.2. If there is any inconsistency between the documents referred to in condition 1.1, the most recent document shall prevail to the extent of the inconsistency. However, the conditions of this approval shall prevail to the extent of any inconsistency.	All	n/a	Not Triggered Noted. No inconsistencies were identified during the review.
1.3. The Proponent shall comply with any reasonable requirement/s of the Secretary arising from the Department's assessment of: a) any strategies, plans, programs, reviews, audits or correspondence that are submitted in accordance with the requirements in this approval; b) any report, reviews or audits commissioned by the Department regarding compliance with this approval; and c) the implementation of any actions or measures contained in these documents.	All	■ AEMR	Compliant There were no requests received during the reporting period.
Modifications to the Scope of the Project 1.4. Pursuant to section 75J(4) of the Environmental Planning and Assessment Act 1979 the project is modified to delete the following turbines from the scope of the project: KIA_03, KIA_04, KIA_05, KIA_06, KIA_07, KIA_08, KIA_09, KIA_10, KIA_11, KIA_12 and KIA_14. This approval does not authorise construction of these turbines. Note: the turbines referred to under condition 1.4 have been removed from the project based on a precautionary approach with respect to potential aviation hazards associated with the project, and for potential users of the Crookwell Airstrip. Turbines have been selected for deletion from the project based on the Inner Horizontal and Conical Surfaces identified for a Code 2, Non-instrument runway under Manual of Standards Part 139 – Aerodromes (Version 1.4) (Civil Aviation Safety Authority, April 2008).	Construction & Operation	■ Site observations ■ Review of aerial photography	Compliant There has been no construction of these turbines.
1.5. Pursuant to section 75J(4) of the Environmental Planning and Assessment Act 1979 the project is modified to remove the ability of the Proponent to relocate turbines from the locations indicated in the document referred to under condition 1.1a) by up to 250 metres, without further assessment and approval in accordance with the requirements of the Environmental Planning and Assessment Act 1979.	Construction & Operation	■ Site observations ■ Review of aerial photography	Compliant There was no evidence during the review that any turbines had been relocated from the approved locations. The project website confirms that the project includes 73 turbines, as allowed by the Part 3A approval. The Pre-Operations Compliance Report assessed the locations of the turbines as compliant.
Limits of Approval 1.6. This approval shall lapse five years after the date on which it is granted unless the Proponent has confirmed to the satisfaction of the Secretary that orders have been placed for wind turbines, or demonstrated that work subject of this approval has been completed on the site before that time.	Construction	n/a – complete	Not Triggered Not relevant to this project stage.
1.7. The Proponent shall ensure that all licences, permits and approvals are obtained and maintained as required throughout the life of the project. No condition of this approval removes the obligation for the Proponent to obtain, renew or comply with such licences, permits or approvals. The Proponent shall ensure that a copy of this approval and all relevant environmental approvals are available on the site at all times during the project.	Construction & Operation	■ AEMR ■ Annual EPL Return ■ Website review	Compliant A copy of the Project Approval and Environmental Protection Licence was sighted as being available: - On the project website - On-site at the site compound
1.8. The Proponent may elect to construct the project in stages. In this case, these conditions of approval may be complied with separately for each stage, as relevant.	Construction	n/a – complete	Not Triggered
1.9. Within one year of decommissioning, the site shall be returned, as far as practicable, to its condition prior to the commencement of construction. All wind turbines and associated above ground structures (i.e. not including turbine foundations) including but not necessarily limited to, the substation, the control and facilities building and electrical infrastructure shall be removed from the site unless otherwise agreed by the Secretary, except where the substation, control room or overhead electricity lines are transferred to or in the control of the local electricity network operator. All other elements associated with the project, including site roads, shall be removed unless otherwise agreed to by relevant the landowner(s).	Decommissioning	n/a – future phase	Not Triggered
1.10. If any wind turbine is not used for the generation of electricity for a continuous period of 12 months, it shall be decommissioned by the Proponent, unless otherwise agreed by the Secretary. The Proponent shall keep independently-verified annual records of the use of wind turbines for electricity generation. Copies of these records shall be provided to the Secretary upon request. The relevant wind turbine and any associated infrastructure is to be dismantled and removed from the site by the Proponent within 24 months from the date that the wind turbine was last used to generate electricity.	Operation	■ Review of generation records	Compliant The site SCADA records the generation rates of each turbine. The SCADA records demonstrate that all turbines had been used to generate electricity during the reporting period.
1.11. Prior to the commencement of construction, the Proponent shall provide written evidence to the satisfaction of the Secretary that the lease agreements with the site landowners have adequate provisions to require that decommissioning occurs in accordance with this approval.	Pre-Construction	n/a – complete	Not triggered

Compliance Requirement	Development Phase	Monitoring Methodology	Evidence / Findings
2. SPECIFIC ENVIRONMENTAL CONDITIONS Visual Amenity Landscaping Requirements 2.1. Prior to the commencement of Operation, the Proponent shall consult with Council and the RMS in relation to the need to provide landscaping screening measures along public road reserves such as but not limited to Range Road, Storriers Lane, Bannister Lane and Grabben Gullen Road and shall report to the Secretary on the outcomes of this consultation. The Proponent shall implement landscaping screening measures in accordance with the Secretary's requirements.	Pre-Operation	n/a – complete	Not triggered
2.2. By December 2015, the Proponent shall notify in writing: a) all owners of existing or approved residential dwellings that are located within three kilometres of the project; b) all owners of approved subdivision allotment where there is an approved dwelling entitlement, where such subdivision allotments were approved by the date of approval of the project that are located within three kilometres of the project; c) the owners of Lot 55 of DP 754115; d) but excluding the owners of Lot 118 of DP 1116333 and Lot 121 of DP 754115 and the owners of Lots 143 and 303 of DP 754115, Lot 2 of DP 541500 and Lot 2 of DP 541499 e) the owners of PW37 that they are entitled to landscaping treatments on their property in order to minimise the visual impact of the project on their property.	Pre-Operation	n/a – complete	Not triggered
2.3. Upon receiving a written request from the landowner referred to in condition 2.2 to have landscaping treatments implemented on their property, the Proponent shall: a) within fourteen (14) days of receiving the request, commission a suitably qualified person approved by the Secretary, to investigate reasonable and feasible measures to minimise the visual impacts of the project on the landowner's property using landscape treatments; b) ensure that the qualified person provides a landscaping plan detailing the matters investigated and consequential recommendations within twelve (12) weeks of receiving such request; and c) provide the landowner with a copy of the landscaping plan, including suggested landscape treatment measures, within fourteen (14) days of receiving the plan. If the parties agree on the landscaping plan, then the Proponent shall implement the agreed measures with all landscaping being completed within three months (where practical). The Proponent shall maintain these measures, at their cost, for a period of two years. Access and notification arrangements are to be negotiated between the parties. Landscape treatments shall include, but not be limited to, site preparation stock and rabbit proof fencing, selection and planting of appropriate species decided by both parties, watering, weed control and the replacement of failed plants. If the parties are unable to agree on the landscaping plan within three months of the plan being provided to the landowner, or there is a dispute about the implementation of any agreed landscaping treatments, then either party may refer the matter to the Secretary for resolution. The Secretary's decision on such a referral shall be final and binding on the parties.	Construction	n/a – complete	Not triggered
2.3 A By 31 December 2015, unless otherwise agreed by the Secretary, the Proponent shall implement: a) landscaping treatments to screen the substation and associated switching station for the project; and b) colour treatment to perimeter fencing for the substation and associated switching station for the project to minimise glare, to the satisfaction of the Secretary. The landscaping treatments referred to in 2.3A a) must employ all reasonable and feasible mitigation measures and utilise mature plantings to screen the substation and switching station from the surrounding non-associated property PW4. Following the installation of the landscaping treatments, the Proponent shall maintain them over the life of project.	Operation	■ Landscape maintenance records ■ Community engagement records	Compliant The substation and its fencing were observed to be finished with non-reflective surfaces. Landscaping around the substation has been completed. There have not been any complaints regarding the screening of the substation during the AEMR reporting period.
Turbine External Design 2.4. Wind turbine generators shall be painted matte off-white/grey. The blades shall be finished with a surface treatment that minimises any potential for glare or reflection.	Construction	n/a – complete	Not triggered
2.5. No advertising, signs or logos shall be mounted on the turbines, except where required for safety purposes. A corporate logo may be placed on the turbines provided it is not distinguishable by the naked eye from any publicly accessible location or from any properties not being an associated property.	Construction & Operation	■ Visual inspection	Compliant During the review, no observations were made to the contrary of this condition.

Compliance Requirement	Development Phase	Monitoring Methodology	Evidence / Findings						
<p>Lighting</p> <p>2.6. No external lighting other than low intensity security night lighting of infrastructure associated with the project, including wind turbine generators is permitted; unless otherwise agreed or directed by the Secretary.</p>	Pre-Construction, Construction & Operation	■ Visual inspection	<p>Compliant</p> <p>Each of the turbines have low intensity internal lighting and a low intensity light above the door on the exterior of the turbine for safe turbine access. During the review it was reported that the lighting on the turbines are low intensity.</p> <p>DPIE has previously provided written agreement for the use of the external lights to facilitate safe access to turbines. DPIE stated that in the event of a complaint relating to the use of lights that use will cease until an investigation is completed. A search of the community engagement record system showed that there were no complaints regarding lighting recorded during the AEMR reporting period.</p>						
<p>Shadow-flicker</p> <p>2.7. Shadow flicker arising from the operation of the project shall not exceed 30 hours/annum at any residence not being an associated residence.</p>	Pre-Construction, Construction & Operation	■ Review of Pre-Operation Compliance Report ■ Community engagement records	<p>Compliant</p> <p>The pre-operation compliance report notes that this condition had been satisfied.</p> <p>A search of the community engagement record system showed that there were no complaints regarding shadow flicker since 2015.</p>						
<p>Noise Impacts</p> <p>Construction and Decommissioning Noise</p> <p>2.8. The Proponent shall only undertake construction or decommissioning activities associated with the project that would generate an audible noise at any residential premises during the following hours:</p> <p>a) 7:00 am to 6:00 pm, Mondays to Fridays, inclusive;</p> <p>b) 8:00 am to 1:00 pm on Saturdays; and</p> <p>c) at no time on Sundays or public holidays.</p> <p>This condition does not apply in the event of a direction from police or other relevant authority for safety reasons, or emergency work to avoid the loss of lives, property and/or to prevent environmental harm</p>	Construction & Decommissioning	n/a – complete / future stage	Not triggered						
<p>2.9. The hours of construction or decommissioning activities specified under condition 2.8 of this approval may be varied with the prior written approval of the Secretary. Any request to alter the hours of construction or decommissioning specified under condition 2.8 shall be:</p> <p>a) considered on a case-by-case basis; and</p> <p>b) accompanied by details of the nature and need for activities to be conducted during the varied construction or decommissioning hours and any other information necessary to reasonably determine that activities undertaken during the varied construction or decommissioning hours will not adversely impact on the acoustic amenity of receptors in the vicinity of the site; and</p> <p>c) affected residential receivers being informed of the timing and duration of work approved under this condition at least 48 hours before that work commences.</p>	Decommissioning	n/a – future stage	Not triggered						
<p>2.10. During construction or decommissioning, the Proponent shall minimise noise emissions from plant and equipment operated on the site by installing and maintaining, wherever practicable, efficient silencers, low-noise mufflers (residential standard) and replacement of reversing alarms on vehicles with alternative silent measures, such as flashing lights</p>	Construction & Decommissioning	n/a – complete / future stage	Not triggered						
<p>Construction or Decommissioning Blasting</p> <p>2.11. Blasting associated with the construction or decommissioning of the project shall only be undertaken during the following hours:</p> <p>a) 9:00 am to 5:00 pm, Mondays to Fridays, inclusive;</p> <p>b) 9:00 am to 1:00 pm on Saturdays; and</p> <p>c) at no time on Sundays or public holidays.</p>	Construction & Decommissioning	n/a – complete / future stage	Not triggered						
<p>2.12. The Proponent shall ensure that air blast overpressure generated by blasting associated with the project does not exceed the criteria specified in Table 1 when measured at the most affected residential or sensitive receiver.</p> <p>Table 1 – Airblast Overpressure Criteria</p> <table><tr><th>Air blast Overpressure (dB(Lin Peak))</th><th>Allowable Exceedance</th></tr><tr><td>115</td><td>5% of total number of blasts over a 12 month period</td></tr><tr><td>120</td><td>Never</td></tr></table>	Air blast Overpressure (dB(Lin Peak))	Allowable Exceedance	115	5% of total number of blasts over a 12 month period	120	Never	Construction & Decommissioning	n/a – complete / future stage	Not triggered
Air blast Overpressure (dB(Lin Peak))	Allowable Exceedance								
115	5% of total number of blasts over a 12 month period								
120	Never								
<p>2.13. The Proponent shall ensure that the ground vibration generated by blasting associated with the project does not exceed the criteria specified in Table 2 when measured at the most-affected residential or sensitive receiver.</p> <p>Table 2 – Peak Particle Velocity Criteria</p> <table><tr><th>Peak Particle Velocity Criteria (mm/s)</th><th>Allowable Exceedance</th></tr><tr><td>5</td><td>5% of total number of blasts over a 12 month period</td></tr><tr><td>10</td><td>Never</td></tr></table>	Peak Particle Velocity Criteria (mm/s)	Allowable Exceedance	5	5% of total number of blasts over a 12 month period	10	Never	Construction & Decommissioning	n/a – complete / future stage	Not triggered
Peak Particle Velocity Criteria (mm/s)	Allowable Exceedance								
5	5% of total number of blasts over a 12 month period								
10	Never								
<p>2.14. Prior to each blasting event, the Proponent shall notify the relevant local council and potentially-affected landowners, including details of time and location of the blasting event and providing a contact point for inquiries and complaints.</p>	Construction & Decommissioning	n/a – complete / future stage	Not triggered						

Compliance Requirement	Development Phase	Monitoring Methodology	Evidence / Findings
<p>Operational Noise Criteria</p> <p>2.15. Subject to conditions 2.15 to 2.20 the Proponent shall design, operate and maintain the project to ensure that the equivalent noise level (LAeq (10-minute)) from the project does not exceed at each of the residential receiver locations identified in Section 5 of the Noise Impact Assessment prepared by Marshall Day Acoustics, dated 5 June 2008 (Section 3.2 of EA Attachments), or any other residential receiver in existence or the subject of a valid development consent at the date of this approval (but including PW37):</p> <p>a) 35 dB(A); or</p> <p>b) the existing background noise level (LA90 (10-minute)) correlated to the integer wind speed at hub height at the wind farm site by more than 5 dB(A).</p>	Pre-Construction & Operation	<ul style="list-style-type: none"> Noise monitoring Community Engagement Records 	<p>Compliant</p> <p>Noise compliance testing was undertaken between 9 December 2014 and 24 June 2015. The testing found that the operation of the project complies with this condition.</p> <p>Additional testing of the noisiest maintenance activity was undertaken and documented in a monitoring report dated 23rd October 2016 "Gullen Range Wind Farm - Crane Noise Assessment". This noise monitoring was undertaken during maintenance work which will create the greatest potential noise impacts.</p> <p>Both reports concluded that the Project was compliant with the conditions of approval.</p> <p>Further noise assessments will be undertaken for any planned activities that are expected to create more noise than would have been observed from the 23 October 2016 assessment.</p> <p>No noise monitoring has been undertaken during the current AEMR period. Two noise complaints were received during 2020 from nearby neighbours. The wind turbines were inspected in both cases and no issues were identified. The complainants were informed of the actions taken and no further complaints have been received.</p>
<p>2.16. The Proponent shall prepare a revised Noise Assessment for the final turbine model and turbine layout selected, which shall be submitted to the Secretary prior to commissioning of the wind turbines. The assessment shall demonstrate consistency with the EA and the ability of the final turbine model and layout to meet the requirements of condition 2.15. The revised Noise Assessment shall include the following:</p> <p>a) noise predictions of the final turbine model and layout selected at each of the receiver locations;</p> <p>b) method and modelling inputs employed to carry out the noise level predictions according to the SA Guidelines 2003 except that all sounds power levels and wind speeds shall be referenced to hub height;</p> <p>c) an assessment of the suitability of background noise level data to cover the range of wind speeds and directions generally expected at the site; and</p> <p>d) noise predictions shall be conducted by an acoustic engineer defined for the purposes of this condition as an engineer who is eligible for membership of both the Australian Acoustical Society and the Institution of Engineers Australia.</p>	Pre-Operation	n/a - complete	Not triggered
<p>2.17. Where noise predictions are found to exceed the limits specified in condition 2.15 the Proponent shall develop and implement a Noise Operating Strategy that identifies specific methods of noise reductions to restore the levels back to the limits in Condition 2.15 at any receiver location for all wind directions including worst case-scenarios. The strategy shall include noise modelling verification that demonstrates the predicted noise reductions can be achieved.</p>	Operation (commencement)	n/a - complete	Not triggered
<p>2.18. Noise from the project is to be measured at the most affected point within the residential boundary, or at the most affected point within 20 metres of the dwelling, where the dwelling is more than 20 metres from the boundary, to determine compliance with the noise level limits in conditions 2.15 and 2.16. Under this Condition "dwelling" means one in existence or the subject of a valid development consent at the date of this approval.</p>	Operation (commencement)	n/a - complete	Not triggered
<p>2.19. For the purposes of conditions 2.15 and 2.16 of this approval, 5 dB(A) shall be applied to measured noise levels where tonality is present. The presence of tonality shall be determined using the methodology detailed in Wind Turbine Generator Systems- Part 11: Acoustic Noise Measurement Techniques IEC 61400-11:2002 or its latest edition or as otherwise agreed with the EPA.</p>	Operation (commencement)	n/a - complete	Not triggered
<p>2.20. Notwithstanding conditions 2.15 and 2.16 of this approval, the noise limits specified under those conditions do not apply to any residence where a noise agreement is in place between the Proponent and the respective owner(s) of those residences in relation to noise impacts and/or noise limits. For this condition to take effect, the noise agreements shall satisfy the requirements of Guidelines for Community Noise (WHO, 1999) and Section 2.3 of the SA Guidelines 2003 or as otherwise agreed by the Secretary.</p>	Operation (commencement)	n/a - complete	Not triggered
<p>Verification of Operational Noise Performance</p> <p>2.21. The Proponent shall prepare a Noise Compliance Plan which shall be submitted to the Secretary prior to commissioning of the wind turbines. The Noise Compliance Plan shall include, but not be limited to:</p> <p>a) an assessment of the performance of the project against the noise predictions contained in conditions 2.15 and 2.16;</p> <p>b) a commitment to operate the Project in accordance with any Noise Operating Strategy that is implemented in accordance with condition 2.17;</p> <p>c) a commitment that noise compliance monitoring will be undertaken within three months of the commissioning of the wind turbines. If prevailing meteorological conditions do not allow the required monitoring to be undertaken in this period, the Secretary shall be notified and an extension of time may be sought; and</p> <p>d) a requirement that all noise compliance monitoring results are submitted to the Secretary within one month of completion of the monitoring. The Secretary may request that additional noise compliance monitoring be undertaken and completed within a specified timeframe.</p> <p>The Noise Compliance Assessment shall be undertaken generally in accordance with the procedures presented in SA Guidelines 2003, except that all sounds power levels and wind speeds shall be referenced to hub height unless otherwise agreed with the EPA.</p>	Operation (commencement)	n/a - complete	Not triggered

Compliance Requirement	Development Phase	Monitoring Methodology	Evidence / Findings
<p>2.22. In the event that the Noise Compliance Plan indicates that noise from the wind turbines exceeds the noise limits specified under conditions 2.15 and 2.16, as relevant, the Proponent shall investigate and propose mitigation and management measures to achieve compliance with the noise limits. Details of the remedial measures and a timetable for implementation must be submitted to the Secretary for approval within such period as the Secretary may require.</p> <p>Remedial measures shall include, in the first instance, all reasonable and feasible measures to reduce Noise from the project, including but not necessarily limited to reduced operation of wind turbines. Once all reasonable and feasible source controls are exhausted, remedial measures may include offering building acoustic treatments and/or noise screening to affected residences, but may only be used to address noise limit exceedances at the absolute discretion of the relevant landowner. The Proponent shall also demonstrate that the relevant landowner/resident has been made fully aware of the noise and other implications of making any agreement.</p> <p>If there is no such agreement with the relevant landowner, then the turbine(s) causing the exceedance(s) of the noise limits must be turned off until the turbine(s) can be operated in accordance with this approval.</p>	Operation (commencement)	n/a - complete	Not triggered
2.23. The Proponent shall provide written notice to all landowners that are entitled to rights under condition 2.22 within 21 days of determining the landholdings to which these rights apply. For the purpose of condition 2.22, this condition only applies where operational noise levels have been confirmed in accordance with the conditions 2.15 and 2.16.	Operation (commencement)	n/a - complete	Not triggered
2.24. The Proponent shall bear the costs of any additional at-receiver mitigation measures implemented at an affected landowner or property.	Operation (commencement)	n/a - complete	Not triggered
<p>Land Acquisition and Criteria</p> <p>2.25. Should the Proponent determine to proceed with any or all of turbines listed in Table 3, the Proponent shall notify in writing the owner of each of the Lots listed in the corresponding row of the specific turbine(s) it intends to proceed with and that it is initiating the acquisition process.</p> <p>SEE APPENDIX 1 FOR TABLE 3</p>	Pre-Construction	n/a – complete	Not triggered
2.26. At the request of the owner(s) of any of the Lots notified under condition 2.25 if such a request is made within three months of the date of service of the notification required under condition 2.25 and provided that this approval or/and (in relation to any Kings' Lots referred to in Table 3 of condition 2.25) development consent 230/07 has not lapsed or been surrendered within that time, the Proponent shall proceed to acquire the relevant landholdings referred to in the owner(s)' request under this condition.	Pre-Construction	n/a – complete	Not triggered
<p>2.27. Within three months of receiving a written request from a landowner with acquisition rights under conditions 2.26 of this approval, the Proponent shall make a binding written offer to purchase the land specified in the request to the landowner with such offer to remain open for a period of three months after receipt and shall not be reduced, based on:</p> <p>a) the current market value of the landowner's interest in the land at the date of the written request, as if the land was unaffected by the project, having regard to the:</p> <p>i) existing and permissible use of the land, in accordance with applicable planning instruments at the date of the written request; and</p> <p>ii) presence of improvements on the land and/or any approved building or structure which has been physically commenced at the date of the landowner's written request, and is due to be completed subsequent to that date;</p> <p>b) the reasonable costs associated with obtaining legal advice and expert advice for determining the acquisition price of the land, and the terms upon which it is acquired; and</p> <p>c) reasonable compensation for any disturbance caused by the land acquisition process.</p> <p>If after three months of receipt of the Proponent's offer above the Proponent and landowner cannot agree on the acquisition price of the land, including costs and compensation under b) and c) above, and/or the terms upon which the land is to be acquired, then either party may refer the matter to the Secretary for resolution.</p> <p>Upon receiving such a request, the Secretary shall request the President of the New South Wales Division of the Australian Property Institute to appoint a suitably qualified and experienced independent valuer, being a Fellow of the Institute, to consider submissions from both parties, and determine a fair and reasonable acquisition price for the land, including the reasonable compensation for disturbance caused by the land acquisition process associated with c) above, and/or terms upon which the land is to be acquired. This process is to be completed within three months of Secretary receiving any such request.</p> <p>Within 14 days of receiving the independent valuer's determination, the Proponent shall make a binding written offer (including as to the reasonable costs and compensation under b) and c) above), which shall remain open for a period of three months after receipt and shall not be reduced, to purchase the land at a price not less than the independent valuer's determination and otherwise on the terms specified in the determination.</p> <p>If the landowner refuses to accept this offer within three months of the date of receipt of the Proponent's offer, the Proponent's obligations to acquire the land concerned shall cease,</p> <p>If the landowner accepts either of the offers above and thereafter the Proponent fails to acquire the land on terms consistent with the relevant offer within three months of acceptance, the relevant turbines are to be deleted.</p>	Pre-Construction	n/a – complete	Not triggered

Compliance Requirement	Development Phase	Monitoring Methodology	Evidence / Findings
2.28. The Proponent shall bear the reasonable costs of any valuation or survey assessment requested by the independent valuer or the Secretary and the costs of determination referred to under condition 2.27.	Pre-Construction	n/a – complete	Not triggered
2.29. If the Proponent and landowner agree that only part of that landowner's property shall be acquired, then the Proponent shall pay all reasonable costs associated with obtaining Council approval for any plan of subdivision (where permissible), and registration of the plan at the Office of the Registrar-General.	Pre-Construction	n/a – complete	Not triggered
2.30. If the Proponent has not initiated the acquisition process referred to in condition 2.25 for any Lot specified in any request under condition 2.26 by 26 June 2013 or prior to the commencement of any construction activities in the relevant sector of the project; whichever occurs earliest, the relevant nominated turbine(s) relating to that Lot identified in condition 2.25 are to be deleted from the project.	Pre-Construction	n/a – complete	Not triggered
2.31. If the Proponent has initiated the acquisition process referred to in condition 2.25 by the earlier of the dates determined in accordance with condition 2.30 and the owners of the relevant Lot to be acquired notify the Proponent in writing that they do not consent to their Lot being acquired, or fail to provide a written request to the Proponent for all or part of their land to be acquired in accordance with condition 2.26, then the requirement either to acquire that land under condition 2.25, or to delete the nominated relevantly applicable turbine from the project under condition 2.30 lapses.	Pre-Construction	n/a – complete	Not triggered
2.32. Conditions 2.25-2.30 of this approval are to apply to the landowners of Lots 105, 106, 112, 113, 195, 227 and 253 of DP 7540042 and Lots 247, 304, 355 and 366 of DP7541115 if: a) turbines BAN_14 and BAN_15 are not deleted by 26 June 2013; and b) aviation hazard lighting is required to be installed on any turbines in the project.	Pre-Construction	n/a – complete	Not triggered
Flora and Fauna Impacts 2.33. The Proponent shall not operate wind turbines POM_03, POM_04, POM_06, and POM_07 between one hour before sunset and one after sunrise during the period 30 November to 31 March, unless the Proponent demonstrates to the satisfaction of the Secretary that operation during these periods will not adversely impact on Powerful Owl juvenile dispersion. In undertaking such a demonstration, the Proponent shall undertake the following: a) monitoring of the dispersion Powerful Owl juveniles in and around the site, to be conducted by an independent specialist approved by the Secretary; b) preparation of a report to be submitted to the Secretary presenting the outcomes of monitoring and impacts to the Powerful Owl juvenile dispersion in and around the site; and c) conclusively demonstrating to the satisfaction of the Secretary that the dispersion of Powerful Owl juveniles in and around the site will not be adversely impacted by the project.	Operation	■ Generation records	Compliant A sample of reporting produced from the SCADA system was sighted during the AEMR review for POM3, POM4, POM6 and POM7. These records demonstrated the shut-down periods were being applied, as per the requirements of the condition. The 2016 AEMR reported that a Powerful Owl Monitoring report (February 2015) had been completed in accordance with the requirements of this condition and concluded that the risk to Powerful Owl juveniles is low.
2.34. The Proponent shall ensure that during the construction of wind turbine BAN_14, including construction and/ or installation of any ancillary facilities and any site access arrangements, the following requirements are met: a) vegetation defined as all or part of an Endangered Ecological Community shall not be cleared, modified or otherwise directly impacted as a result of the works; b) access to the construction site shall be clearly demarcated to minimise the potential for impacts on local vegetation; c) disturbed areas shall be stabilised and rehabilitated following the conclusion of construction works; and d) an independent qualified ecologist shall attend all site works to advise on mitigation, management and monitoring measures that shall be applied to comply with this condition of approval.	Construction	n/a – complete	Not triggered
2.35. By the 31 December 2015, unless otherwise agreed with the Secretary, the Proponent shall revise the proposed compensatory habitat package to offset in perpetuity the value of habitat lost as a result of the project, in consultation with OEH, and to the satisfaction of the Secretary. Unless otherwise agreed to by the Secretary, the package shall comprise: a) a minimum of 2:1 'like for like' offset of the vegetation communities to be removed or otherwise disturbed on site utilising a "Worst Case Scenario" impact assessment; or b) the implementation of in kind management measures or funding for such measures as agreed to by OEH; or a combination of the measures specified in a) and b). Once the Secretary has endorsed the compensatory habitat package, the Proponent shall implement the package to the satisfaction of the Secretary.	Pre-Operation & Operation	■ Review of Annual Offset Report	Compliant The Annual Offset Report 2020 was sighted during the review. The report reviews the monitoring and performance of the offset area and makes recommendations for achieving the required obligations regarding grazing exclusions, weed and pest control, assisted regeneration of overstorey and midstorey vegetation and enrichment of native ground cover and species diversity. The offset report was submitted to DPIE, OEH and SELLS (via email on 22 February 2021 and the DPIE Portal).
2.36. The Proponent shall make a financial contribution of \$1500.00 to the NSW Wildlife Information and Rescue Service for each death of a Powerful Owl that has reasonably been attributed to the carrying out of the project. The financial contribution must be paid by the Proponent within one month of the Proponent becoming aware of the death. The contribution must be adjusted to take account of any increase in the Consumer Price Index (All Groups Index for Sydney) over time, commencing at the September 2010 quarter.	Operation	■ Review of Powerful Owl survey Records ■ Payment records	Compliant No Powerful Owl deaths have been identified on or near the wind farm during the current AEMR period.

Compliance Requirement	Development Phase	Monitoring Methodology	Evidence / Findings
<p>2.37. The Proponent shall make a financial contribution of \$1500.00 to the NSW Wildlife Information and Rescue Service for each death of the Wedge-tailed Eagle that has reasonably been attributed to the carrying out of the project. The financial contribution must be paid by the Proponent within one month of the Proponent becoming aware of the death.</p> <p>The contribution must be adjusted to take account of any increase in the Consumer Price Index (All Group Index for Sydney) over time, commencing at the September 2010 quarter.</p>	Operation	<ul style="list-style-type: none"> ■ Review of Wedge-tailed Eagle survey records ■ Payment records 	<p>Compliant</p> <p>There was one Wedge-tailed Eagle strike reported during the AEMR reporting period. The financial contribution payment (adjusted for CPI) was made to the NSW Wildlife Information and Rescue Service as required by Condition 2.37</p>
2.38. In order to avoid the Endangered Ecological Community of vegetation in the southern portion of the Pomeroy site, proposed cabling Option 2 shall be utilised.	Construction	n/a – complete	Not triggered
2.39. Gurrundah Creek shall be surveyed by a suitably qualified ecologist for the presence of Platypus. Subject to identification of the species, any construction works in the vicinity of the creek shall be conducted in accordance with the Flora and Fauna Management Plan contained in condition 7.3 such that negative impacts to the species are mitigated.	Pre-Construction	n/a – complete	Not triggered
2.40. Prior to the commencement of construction, clearly defined work areas (including access trails) must be established using a combination of posts, fencing or markers, and suitably marked up maps as appropriate. All on-site construction movements are to be restricted to these areas, to prevent uncontrolled or inadvertent access by vehicles or construction personnel to vegetation and fauna habitat to be protected under this approval.	Pre-Construction	n/a – complete	Not triggered
<p>Aviation</p> <p>2.41. Prior to the commencement of operation, the following information shall be provided by the Proponent to the Civil Aviation Safety Authority, Commonwealth Department of Defence and Airservices Australia to inform these agencies of the wind farms location:</p> <p>a) “as constructed” coordinates in latitude and longitude of each wind turbine generator;</p> <p>b) final height of each wind turbine generator in Australian Height Datum; and</p> <p>c) ground level at the base of each wind turbine generator in Australian Height Datum.</p>	Pre-Operation	n/a – complete	Not triggered
2.42. The Proponent shall notify all known users of the Crookwell, Ashwel and Kings’ Airstrips of the location of the wind turbines and any changes to operational procedures.	Pre-Operation	n/a – complete	Not triggered
<p>Bushfire Risk</p> <p>2.43. Throughout the life of the project, the Proponent shall regularly consult with the local RFS to ensure its familiarity with the project, including the construction timetable and the final location of all infrastructure on the site. The Proponent shall comply with any reasonable request of the local RFS to reduce the risk of bushfire and to enable fast access in emergencies.</p>	Construction, Operation & Decommissioning	<ul style="list-style-type: none"> ■ Stakeholder engagement records 	<p>Compliant</p> <p>GRWF staff are in regular contact with the RFS. The RFS have been provided with information on how to access the site and a site map in case of an emergency.</p>
<p>2.44. The Proponent shall:</p> <p>a) ensure there is appropriate fire-fighting equipment held on site to respond to any fires that may occur at the site during construction, operation and decommissioning of the project; and</p> <p>b) assist the RFS and emergency services as much as possible if there is a fire on-site during the project.</p>	Construction, Operation & Decommissioning	<ul style="list-style-type: none"> ■ Observation 	<p>Compliant</p> <p>There are fire extinguishers at the main compound, in vehicles and at each wind turbine. A water tank trailer with pump is kept at the main compound and taken on-site for any hot work.</p> <p>Fire equipment and hot works requirements are covered in the Site Induction, Parts 1 and 2. The induction states that hot works must not be undertaken on high fire risk days (unless for emergency reasons) or total fire ban days, requires a site work permit and JSEA, fire-spotter and dampening of dry grass before and after works.</p> <p>There have not been any fire incidents during the AEMR period.</p>
<p>2.45. The Proponent shall prepare, in consultation with the local RFS, a Bushfire Risk Management Plan based on the guidelines Planning for Bushfire Protection (RFS, 2001 or its latest edition). The Plan shall include, but not necessarily be limited to:</p> <p>a) details of the bushfire hazards and risks associated with the project;</p> <p>b) mitigation measures including contingency plans;</p> <p>c) procedures and programs for liaison and regular drills with the local RFS; and</p> <p>d) procedures for regular fire prevention inspections by the local RFS and implementation of any recommendations</p>	Pre-Operation	n/a – complete	Not triggered
<p>Bunding and Spill Management</p> <p>2.46. The Proponent shall store and handle all dangerous goods (as defined by the Australian Dangerous Goods Code) and combustible liquids, strictly in accordance with:</p> <p>a) all relevant Australian Standards;</p> <p>b) a minimum bund volume requirement of 110% of the volume of the largest single stored volume within the bund; and</p> <p>c) the EPA’s Environment Protection Manual Technical Bulletin Bunding and Spill Management</p> <p>In the event of an inconsistency between requirements listed from a) to c) above, the most stringent requirement shall prevail to the extent of the inconsistency.</p>	Construction & Operation	<ul style="list-style-type: none"> ■ Observation ■ Incident records 	<p>Compliant</p> <p>The appropriate use of bunds was observed during the review. Each bund has been designed/selected in accordance with the capacity requirements. No new bunds have been constructed during the 2020 AEMR reporting period.</p> <p>The banded storage cabinet is also labelled with a maximum storage capacity. Whilst the current storage volume was not assessed during the review, it did not appear to be over capacity.</p> <p>The SDS Register was reviewed and appeared to be in order.</p>

Compliance Requirement	Development Phase	Monitoring Methodology	Evidence / Findings
Safety Management System 2.47. At least two months prior to the commencement of commissioning, the Proponent shall prepare a report outlining a comprehensive Safety Management System, covering all on-site systems related to ensuring the safe operation of the project. The report must clearly specify all safety related procedures, responsibilities and policies, along with details of mechanisms for ensuring adherence to the procedures. Records must be kept at the Site and must be available for inspection by the Department upon request. The Safety Management System must be developed in accordance with the Department's Hazardous Industry Planning Advisory Paper No. 9, 'Safety Management', and should include: a) procedures and programs for the maintenance and testing of the safety related equipment to ensure its integrity over the life of the project; and b) an outline of a documented procedure for the management of change.	Pre-Operation & Operation	■ Observing up-to-date Safety Management Plan	Compliant Sighted "Safety Management Plan (OMP), GR-PM-PLN-0023" which forms Appendix M of the OEMP. A copy of the document is kept at the main site compound.
Traffic and Transport Impacts 2.48. The Proponent shall apply for a Road Occupancy Licence from the RMS Traffic Operations Unit prior to commencing work within the classified road reserve or within 100 metres of traffic signals. The application shall be accompanied by a Traffic Control Plan to be prepared by a person who is certified to prepare Traffic Control Plans.	Pre-Construction	n/a – complete	Not triggered
2.49. Upon determining the haulage route(s) for the construction or decommissioning of the project, the Proponent shall: a) commission a qualified person to undertake a Road Dilapidation Report of all roads proposed to be used for construction or decommissioning activities in consultation with relevant road authorities. The Report shall assess the current condition of the relevant roads; and b) following completion of the construction or decommissioning of the project, a subsequent Road Dilapidation Report shall be prepared to assess any damage that may have resulted due to traffic and transport related to the construction or decommissioning of the project. The Proponent shall commit to restore the relevant roads to a state, described in the original Road Dilapidation report. The cost of any restorative work described in the subsequent Report or recommended by the relevant road authorities after review of the subsequent Report, shall be funded by the Proponent. Such work shall be undertaken at a time as agreed upon between the Proponent and the relevant road authorities. In the event of a dispute between the parties with respect to the extent of restorative work that may be required under this condition, any party may refer the matter to the Secretary for resolution. The Secretary's determination of any such dispute shall be final and binding on the parties.	Pre-Construction	n/a – complete	Not triggered
2.50. Heavy vehicle access to Ross Bridge will not be permitted for approximately 12 months from the 23 September 2008 as the bridge is undergoing maintenance.	Pre-Construction	n/a – complete	Not triggered
2.51. Prior to the commencement of any works that are part of or extending from Prices Lane, the Proponent is required to obtain the consent of the Surveyor General and a licence under the Crown Lands Act 1989.	Pre-Construction	n/a – complete	Not triggered
2.52. Grabben Gullen Road, Gurrundah Road and Range Road junctions shall be designed and constructed in consultation with Upper Lachlan Shire Council.	Pre-Construction	n/a – complete	Not triggered
2.53. Prior to the commencement of construction, the Proponent shall upgrade all site access roads for temporary use by heavy vehicles to a standard endorsed by the Council to the reasonable and feasible requirements of the Council.	Pre-Construction	n/a – complete	Not triggered
Electromagnetic Interference Television and Radio Interference 2.54. Prior to the commencement of commissioning of the project, the Proponent shall undertake an assessment of the existing quality of the television/radio transmission available at a representative sample of residential dwellings located within 5 kilometres of any wind turbine.	Pre-Operation	n/a – complete	Not triggered
2.55. The Proponent shall undertake reasonable and feasible mitigation to rectify any television/radio transmission problems reasonably attributable to the project at any residential dwelling located within five kilometres of a wind turbine. Such measures may include: a) modification to or replacement of receiving antenna; b) installation and maintenance of a parasitic antenna system; c) provision of a land line between the affected receiver and an antenna located in an area of favourable reception; or d) other feasible measures. e) if interference cannot be overcome by the measures outlined in a) to d), the Proponent shall negotiate with the impacted landowner about installing and maintaining a satellite receiving antenna. Any requested works shall be completed within three months of the completion of the relevant television and/or radio reception assessment, unless otherwise agreed by the landowner. The Proponent shall be responsible for all reasonable costs associated with undertaking any mitigation measures.	Operation	■ Television and/or radio reception assessment ■ Community engagement records	Compliant The 2017 AEMR assessed that all rectification works had been complete. There were no complaints relating to television or radio interference in the current AEMR period.

Compliance Requirement	Development Phase	Monitoring Methodology	Evidence / Findings
Radio Communication 2.56. In the event that any issue with radio communication service links (installed before construction of the project) arise as a result of the project (such as obstruction of transmission paths), the Proponent shall consult with the operator and undertake appropriate remedial measures to rectify any issue. Such measures may include: a) modification to or relocation of the existing antennae; b) installation of a directional antennae; and/ or c) installation of an amplifier to boost the signal strength.	Operation	<ul style="list-style-type: none"> ■ Community engagement records ■ Investigation and rectification records 	Compliant There were no complaints relating to television or radio interference during the AEMR reporting period.
Soil and Water Quality Impacts 2.57. Except as may be expressively provided by an Environment Protection Licence for the project, the Proponent shall comply with section 120 of the Protection of the Environment Operations Act 1997 which prohibits the pollution of waters.	All phases	<ul style="list-style-type: none"> ■ General observation ■ Incident records ■ Physical monitoring, if required 	Compliant There were no observations noted during the review or incident records that indicated that the Project is not compliant with the Act. Compliance with the EPL is assessed in Appendix D.
2.58. Prior to the commencement of construction the Proponent must indicate to the Secretary in consultation with the Department of Primary Industries Water; The details of which water sources are to be used, from which property, for which purpose and the volume and time period required to utilise the water.	Pre-Construction		Previously assessed as compliant Condition specific to construction phase and previously satisfied.
2.59. Soil disturbing activities of any nature are not permitted in the classified Crown Road reserve between Gurrundah Creek and ten metres upslope from the northern end of the abandoned sheep dip site located on the "Hillview" property, being Lot 206 DP750043, other than any soil sampling activities being carried out by a suitable qualified person to identify whether any soil contamination is present.	All phases	n/a – complete	Not triggered
Heritage Impacts 2.60. If during the course of construction the Proponent becomes aware of any previously unidentified Aboriginal object(s), all work likely to affect the object(s) must cease immediately and the OEH informed in accordance with the National Parks and Wildlife Act 1974. Works must not recommence until written authorisation from OEH is received by the Proponent.	Construction	n/a – complete	Not triggered
2.61. If during the course of construction the Proponent becomes aware of any unexpected historical relic(s), all work likely to affect the relic(s) must cease immediately and the Heritage Office notified in accordance with the Heritage Act 1977. Works shall not recommence until the Proponent receives written authorisation from the Heritage Office.	Construction	n/a – complete	Not triggered
Waste Generation and Management 2.62. The Proponent shall not cause, permit or allow any waste generated outside the site to be received at the site for storage, treatment, processing, reprocessing, or disposal or any waste generated on site to be disposed of at the site, except as expressly permitted by a licence under the Protection of the Environment Operations Act 1997, if such a licence is required in relation to that waste.	Construction & Operation	<ul style="list-style-type: none"> ■ General observation ■ Incident records 	Compliant During the review it was reported that the site generates very little waste. The majority of waste relates to packaging materials which are disposed of utilising the sustainable waste hierarchy. Use of on-site paper, wood and plastic recycling bins was observed.
2.63. The Proponent shall ensure that all liquid and / or non-liquid waste generated and / or stored on the site is assessed and classified in accordance with Waste Classification Guidelines Part 1: Classifying Waste (DECC, 2008), or any future guideline that may supersede that document.	Construction & Operation	<ul style="list-style-type: none"> ■ General observation ■ Incident records 	Compliant There were no observations during the review that the Project is not compliant with the Guidelines. See waste section for further detail.
3. ENVIRONMENTAL MONITORING AND AUDITING Bird and Bat Monitoring 3.1. The Proponent shall prepare and implement a Bird and Bat Adaptive Management Program for the project to the satisfaction of the Secretary. This program must be submitted to the Secretary for approval prior to construction, and be updated by 31 December 2015, unless otherwise agreed by the Secretary. The program must be prepared in consultation with OEH and take into account the bird/bat monitoring methods identified in the current editions of AusWEA Best Practice Guidelines for the Implementation of Wind Energy Projects in Australia and Wind Farm and Birds: Interim Standards for Risk Assessment. The Program shall be implemented by a suitably qualified expert, approved by the Secretary. The Program shall incorporate Monitoring, and a Decision Matrix that clearly sets out how the Proponent will respond to the outcomes of monitoring. It must: a) incorporate an ongoing role for the suitably qualified expert; b) set out monitoring requirements in order to assess the impact of the project on bird and bat populations, including details on survey locations, parameters to be measured, frequency of surveys and analyses and reporting. The monitoring program must be capable of detecting any changes to the population of birds and/ or bats that can reasonably be attributed to the operation of the project, that is, data may be required to be collected prior to the commencement of construction. The requirements must also account for natural and human changes to the surrounding environment that might influence bird and/ or bat behaviour such as changes in land use practices, and significant changes in water levels in nearby water bodies; c) incorporate a decision-making framework that sets out specific actions and when they may be required to be implemented to reduce any impacts on bird and bat populations that have been identified as a result of the monitoring; d) identify 'at risk' bird and bat groups such as the Powerful Owl, the Little Eagle, the Common Bent-wing Bat, the Large-footed Myotis and the Eastern False Pipistrelle and include monthly mortality assessments and periodic local population censuses and bird utilisation surveys;	Pre-Construction	<ul style="list-style-type: none"> ■ BMAP monitoring records 	Compliant: This AEMR review has assessed that this condition has been discharged, except for: <ul style="list-style-type: none"> ■ The continuation of routine reporting of bird and bat carcass finds under wind turbines by wind farm personnel, in accordance with the incidental carcass protocol. If any impact occurs, the reporting and investigation requirements of the approved BBAMP should be implemented.

Compliance Requirement	Development Phase	Monitoring Methodology	Evidence / Findings
<p>e) identify potential mitigation measures and implementation strategies in order to reduce impacts on birds and bats such as minimising the availability of raptor perches, swift carcass removal, pest control including rabbits, use of deterrents, and sector management including switching off turbines that are predicted to or have had an unacceptable impact on bird/ bat mortality at certain times; and</p> <p>f) identify matters to be addressed in periodic reports in relation to the outcomes of monitoring, the application of the decision-making framework, the need for mitigation measures, progress with implementation of such measures, and their success.</p> <p>The Reports referred to under part f) shall be submitted to the Secretary on an annual basis, from the commencement of operation, and shall be prepared within two months of the end of the reporting period. The Secretary may vary the reporting requirement or period by notice in writing to the Proponent.</p> <p>The Proponent is required to implement reasonable and feasible mitigation measures as identified under part e) where the need for further action is identified through the Bird and Bat Adaptive Management Program, or as otherwise agreed with the Secretary.</p>			
<p>Noise Monitoring</p> <p>3.2. Noise compliance monitoring shall be conducted in accordance with the Noise Management Plan under conditions 7.3a), 7.5a) and 7.7a), or as directed by the Secretary in response to noise complaints.</p>	<p>7.3 – Construction</p> <p>7.5 – Operation</p> <p>7.7 - Decommissioning</p>	<p>■ Noise monitoring</p>	<p>Compliant</p> <p>Monitoring required by the Noise Management Plan has been complete and day-to-day operation of the wind farm is undertaken in accordance with the Noise Management Plan.</p>
<p>Independent Environmental Auditing</p> <p>3.3. Within two years of the commencement of Operation of the project, and then as may be directed by the Secretary, the Proponent shall commission an independent person or team to undertake an Environmental Audit of the project. The independent person or team shall be approved by the Secretary prior to the commencement of the Audit. The Audit must:</p> <p>a) be carried out in accordance with ISO 19011:2002 - Guidelines for Quality and or Environmental Management Systems Auditing;</p> <p>b) assess compliance with the requirements of this approval, and other licences and approvals that apply to the project;</p> <p>c) assess the environmental performance of the project against the predictions made and conclusions drawn in the documents referred to under condition 1.1 of this approval;</p> <p>d) review the effectiveness of the environmental management of the project, including any environmental impact mitigation works; and</p> <p>e) review the adequacy of the Proponent's response to any complaints made about the project through the Complaints Register required under condition 5.4</p> <p>An Environmental Audit Report must be submitted for comment to the Secretary within two months of the completion of the Audit, detailing the findings and recommendations of the Audit and including a detailed response from the Proponent to any of the recommendations contained in the Report.</p>	<p>Operation (first two years)</p>	<p>n/a – complete</p>	<p>Not triggered</p>
<p>4. ANCILLARY FACILITIES</p> <p>4.1. The sites for Ancillary Facilities must satisfy the following criteria unless otherwise approved through the Construction Environmental Management Plan required under condition 7.2 or the Decommissioning Environmental Management Plan required under condition 7.7:</p> <p>a) be located within the site;</p> <p>b) have ready access to the road network;</p> <p>c) be located to minimise the need for heavy vehicles to travel through residential areas;</p> <p>d) be sited on relatively level land;</p> <p>e) be separated from nearest residences by at least 200 m (or at least 250 m for a temporary batch plant);</p> <p>f) be located above the 20 ARI flood level unless a contingency plan to manage flooding is prepared and implemented;</p> <p>g) not require vegetation clearing beyond that already required for the project; and</p> <p>h) not affect the land use of adjacent properties.</p> <p>The location of the Ancillary Facilities must be identified in the CEMP or DEMP and must include an analysis against the above criteria. Where these criteria cannot be met, the CEMP must demonstrate there will be no adverse impacts from the Ancillary Facility's construction, operation or decommissioning.</p>	<p>Construction & Decommissioning</p>	<p>n/a – complete</p>	<p>Not triggered</p>
<p>5. COMMUNITY INFORMATION, CONSULTATION AND INVOLVEMENT</p> <p>5.1. Subject to confidentiality, the Proponent shall make all documents required under this approval available for public inspection on request.</p>	<p>Operation</p>	<p>■ Website review</p>	<p>Compliant</p> <p>The approval documents were available on the project website at the time of the AEMR review.</p>

Compliance Requirement	Development Phase	Monitoring Methodology	Evidence / Findings
Provision of Electronic Information 5.2. The Proponent shall: <ul style="list-style-type: none"> a) make the following information publicly available on its website: <ul style="list-style-type: none"> • EA; • current statutory approvals for the project, including this project approval and any environment protection licence; • approved plans or programs required under the conditions of this approval; • a comprehensive summary of the monitoring results of the project, which have been reported in accordance with the requirements of the various plans and programs • required under the conditions of this approval; • a complaints register, which is updated on a monthly basis; • any environmental audit of the project, including the Proponent's response to the recommendations in any audit report; and b) keep this information up to date, to the satisfaction of the Secretary. 	Operation	<ul style="list-style-type: none"> ■ Website review 	Compliant During the AEMR review, each of the required documents was found to be available in its most current version on the Project website.
Community Information Plan 5.3. The Proponent shall prepare and implement a Community Information Plan to the satisfaction of the Secretary. This plan must set out the community communications and consultation processes to be undertaken during the construction, operation and decommissioning of the project. The Plan must include but not be limited to: <ul style="list-style-type: none"> a) procedures to inform the local community of planned investigations and Construction or decommissioning activities, including blasting works; b) procedures to inform the relevant community of Construction or decommissioning traffic routes and any potential disruptions to traffic flows and amenity impacts; c) procedures to consult with local landowners with regard to Construction or decommissioning traffic to ensure the safety of livestock and to limit disruption to livestock movements; d) procedures to inform the community where work has been approved to be undertaken outside the normal Construction or decommissioning hours, in particular noisy activities; e) procedures to inform and consult with those landowners who are eligible for landscaping on their property as determined under condition 2.2 of this approval; and f) procedures to notify relevant landowners of the process available to review potential impacts on radio and television transmission. Note: With the agreement of the Secretary, an update of the approved Community Information Plan (August 2012) can satisfy the requirements of this condition.	Construction, Operation & Decommissioning	<ul style="list-style-type: none"> ■ Review of the CIP 	Compliant The CIP was reviewed and updated in 2019, it includes all the elements required by the condition.
Complaints Procedure 5.4. Prior to the commencement of construction of the project, the Proponent shall ensure that the following are available for community complaints for the life of the project (including construction, operation and decommissioning): <ul style="list-style-type: none"> a) a 24-hour telephone number on which complaints about construction, operation and decommissioning activities at the site may be registered; b) a postal address to which written complaints may be sent; and c) an email address to which electronic complaints may be transmitted. The telephone number, the postal address and the e-mail address must be advertised in a newspaper circulating in the locality on at least one occasion prior to the commencement of construction and at six-monthly intervals thereafter. These details must also be provided on the Proponent's internet site.	All phases	<ul style="list-style-type: none"> ■ Website review ■ Advertising records (email/copies/receipts) 	Non-compliant The telephone number, postal address, and email address were each operational and available on the project website at the time of the AEMR review. However, the project contact details were not advertised in a newspaper circulating in the locality during this AEMR reporting period due to an administration error. An advert was immediately issued on 20 January 2021 and a reminder has been established in our compliance management system for future advertising requirements. All interactions with the community are logged into Consultation Manager.
5.5. The Proponent shall record details of all complaints received through the means listed under condition 5.4 of this approval in an up-to-date Complaints Register. The Register shall record, but not necessarily be limited to: <ul style="list-style-type: none"> a) the date and time, where relevant, of the complaint; b) the means by which the complaint was made (telephone, mail or email); c) any personal details of the complainant that were provided, or if no details were provided, a note to that effect; d) the nature of the complaint; e) any action(s) taken by the Proponent in relation to the complaint, including any follow-up contact with the complainant; and f) if no action was taken by the Proponent in relation to the complaint, the reason(s) why no action was taken. The Complaints Register shall be made available for inspection by the Secretary upon request.	All phases	<ul style="list-style-type: none"> ■ Review of the Complaints Register 	Compliant Both an internal Complaints Register as well as a publicly available (via the project website) Complaints Register are maintained. The project version was observed to contain all the required aspects. Complaints are published in the complaints register and communications are tracked using Consultation Manager. Two complaints were received during the 2020 AEMR period, both relating to noise. Records demonstrated that both items were investigated and found to comply with the complaints handling procedure. There were not any requests by the Secretary to view the complaints register during the AEMR period.

Compliance Requirement	Development Phase	Monitoring Methodology	Evidence / Findings
<p>Community Enhancement Program</p> <p>5.6. Prior to the commencement of construction of the project, the Proponent shall prepare and submit for the approval of the Secretary, a Community Enhancement Program, (as generally described in the Environmental Assessment referred to in condition 1.1a) of this approval, in so far as it is consistent with the terms contained in this condition) with the aim of funding community enhancement measures to the benefit of the local community that consists of the following components:</p> <ol style="list-style-type: none"> 1. a Clean Energy Program to support the installation of residential clean energy improvements, (as generally described in the Environmental Assessment referred to in condition 1.1a) of this approval, in so far as it is consistent with the terms contained in this condition); and 2. a Community Fund, to provide funds to undertake initiatives which provide a direct benefit to the local community. <p>The Community Enhancement Program shall be developed in consultation with the Upper Lachlan Shire Council, the Goulburn Mulwaree Council and the local community and provide details of:</p> <ol style="list-style-type: none"> a) the process by which the program's funds would be administered, including mechanisms for accounting and reporting; b) how measures and initiatives to be funded by the program would be identified, assessed, prioritised and implemented over the life of the project; and c) any other terms agreed to by the parties. <p>The Proponent shall each year contribute the sum of \$1666 per constructed turbine to the Community Enhancement Program, commencing upon commissioning of the project until the end of its life. The contribution shall be adjusted to take account of any increase in the Consumer Price Index (All Groups Index for Sydney) over time, commencing at the September 2010 quarter.</p> <p>The Community Enhancement Program shall not require any financial contribution from any recipient of the scheme nor shall the program be conditional on the extent of government subsidies or rebates available for measures to be funded by the program.</p>	Pre-Construction & Operation	<ul style="list-style-type: none"> ■ Review of the CEP ■ Documentation to confirm financial contribution 	<p>Compliant</p> <p>The "Community Enhancement Program (CEP) NGRWF_P_003 Rev 11" was sighted during the review. The Clean Energy Program and Community Fund are both outlined in the CEP.</p> <p>The Community Fund is administered by the Upper Lachlan Shire Council to provide transparency and an independent assessment process. The project currently provides over \$70k per year to the Community Fund and over \$70k per year to the Clean Energy Program.</p>
<p>Community Consultative Committee</p> <p>5.7. The Proponent shall establish and operate a Community Consultative Committee (CCC) for the project to the satisfaction of the Secretary. The CCC must be operational by 31 December 2015, unless the Secretary agrees otherwise, and it must be operated generally in accordance with the guidance in Appendix C of the draft NSW Planning Guidelines Wind Farms (December 2011), or any equivalent guideline.</p> <p>Note: The CCC is an advisory committee. The Department and other relevant agencies are responsible for ensuring that the Proponent complies with this approval.</p>	Operation	<ul style="list-style-type: none"> ■ CCC meeting minutes 	<p>Compliant</p> <p>The CCC met two times in the 2020 AEMR reporting period. The meeting minutes are available of the GRWF website.</p>
<p>6. COMPLIANCE TRACKING PROGRAM</p> <p>6.1. Prior to the commencement of construction, the Proponent shall develop and implement a Compliance Tracking Program for the project, to track compliance with the requirements of this approval during the construction, operation or decommissioning of the project and shall include, but not necessarily limited to:</p> <ol style="list-style-type: none"> a) provisions for an Annual Environmental Management Report (AEMR) that is to be prepared and submitted to the Secretary throughout the operational life of the project. <p>The AEMR must review the performance of the project against the Operational Environmental management Plan, the conditions of this approval and other licences and approvals relating to the project.</p> <ol style="list-style-type: none"> b) provisions for periodic reporting of the compliance status to the Secretary including at least prior to the commencement of construction of the project, prior to the commencement of operation of the project, and prior to the commencement of decommissioning, c) a program for independent environmental auditing in accordance with AS/NZ ISO 19011:2003 - Guidelines for Quality and/or Environmental Management Systems Auditing; d) procedures for rectifying any non-compliance identified during environmental auditing or review of compliance; e) mechanisms for recording environmental incidents and actions taken in response to those incidents; f) provisions for reporting environmental incidents to the Secretary during construction operation and decommissioning; and g) provisions for ensuring all employees, contractors and sub-contractors are aware of, and comply with, the conditions of this approval relevant to their respective activities. 	All phases	<ul style="list-style-type: none"> ■ Review of Compliance Tracking Program ■ Evidence of previous period AEMR ■ Evidence of independent auditing ■ Induction and other personnel briefing information 	<p>Compliant</p> <p>The "Compliance Tracking Program was sighted (NGRWF-P-006, Rev 1, January 2017)". The Compliance Tracking Program includes the relevant aspects required by Condition 6.</p> <p>This report seeks to satisfy Condition 6.1 for the 2020 reporting year.</p> <p>An AEMR for the 2019 reporting period was submitted to DPIE on 25 March 2020 (email of 25/03/202020 from Leo Pearce to Katrina O'Reilly).</p> <p>The wind farm operator Goldwind is 14001:2015 certified and is regularly audited in accordance with the requirements of maintaining its certification. The Goldwind ISO 14001 : 2015 Certificate is valid until 10-02-2023</p> <p>MyOSH is used to store and track required actions so that automatic prompts and reporting is generated. All incidents are recorded in MyOSH, with associated response actions. These requirements are included in the Induction.</p> <p>The Site Safety Manager has created an Obligations Register which includes a calendar for prompts. "Gullen Range Wind Farm Audit Checklist" is used for internal audits and is divided into four sections so that everything is audited once a year. Audit reports are stored in MyOSH with copies sent to the Site Manager and Environment Manager. Sighted Audit Report 18/12/2020 conducted by Michelle Treble.</p> <p>Audit reports are discussed at monthly HSE meeting. Any items for follow-up are logged into MyOSH.</p> <p>Compliance Tracking is monitored monthly at HSE Meetings and fortnightly in between meetings.</p> <p>The Project Approval, OEMP and some of its specific requirements are included in the induction presentation and team briefings are held to maintain awareness and compliance.</p>

Compliance Requirement	Development Phase	Monitoring Methodology	Evidence / Findings
<p>7. ENVIRONMENTAL MANAGEMENT</p> <p>Environmental Representative</p> <p>7.1. Prior to the commencement of the construction, operation or decommissioning of the project, the Proponent shall nominate for the approval of the Secretary a suitably qualified and experienced Environmental Representative(s) independent of the construction, operation or decommissioning personnel. The Proponent shall employ the Environmental Representative(s) for the relevant stage of the project, or as otherwise agreed by the Secretary. The Environmental Representative(s) shall be the Proponent's principal point of advice in relation to the environmental performance of the project and shall have responsibility for:</p> <p>a) overseeing the implementation of all environmental management plans and monitoring programs required under this approval, and advise the Proponent upon the achievement of these plans/programs;</p> <p>b) considering and advising the Proponent on its compliance obligations against all matters specified in the conditions of this approval and the Statement of Commitments as referred to under condition of this approval, permits and licences; and</p> <p>c) having the authority and independence to recommend to the Proponent reasonable steps to be taken to avoid or minimise unintended or adverse environmental impacts, and, failing the effectiveness of such steps, to recommend to the Proponent that relevant activities are to be ceased as soon as reasonably practicable if there is a significant risk that an adverse impact on the environment will be likely to occur.</p>	Construction, Operation & Decommissioning	<ul style="list-style-type: none"> ■ Department approval of ER ■ ER site inspection reports 	<p>Compliant</p> <p>Daniel Saunders is the Environmental Representative (ER). DPIE approved Daniel Saunders to be the ER for the operation phase via letter, dated 15/09/16.</p> <p>The Environmental Representative carried out an annual inspection on 1/09/2020.</p>
<p>Construction Environmental Management Plan (CEMP)</p> <p>7.2. The Proponent shall prepare and implement a Construction Environmental Management Plan in accordance with the Guideline for the Preparation of Environmental Management Plans (DUAP 2004) or its latest revision. The plan must include but not be necessarily be limited to:</p> <p>a) a description of all activities to be undertaken on the site during construction including an indication of stages of construction, where relevant;</p> <p>b) statutory and other obligations that the Proponent is required to fulfil during construction including all approvals, consultations and agreements required from authorities and other stakeholders, and key legislation and policies;</p> <p>c) (deleted)</p> <p>d) details of how the environmental performance of the construction works will be monitored, and what actions will be taken to address identified adverse environmental impacts. In particular, the following environmental performance issues shall be addressed in the Plan:</p> <p>i) measures to monitor and minimise soil erosion and the discharge of sediment and other pollutants to lands and/ or waters during construction activities, particularly during any construction works at or near drainage lines; and</p> <p>ii) measures to monitor and manage dust emissions.</p> <p>e) a description of the roles and responsibilities for all relevant employees involved in the construction of the project; and</p> <p>f) complaints handling procedures during construction.</p> <p>g) the Management Plans listed under condition 7.3 of this approval.</p> <p>The Plan shall be submitted for the approval of the Secretary no later than one month prior to the commencement of any construction works associated with the project, or within such period otherwise agreed by the Secretary. Construction works shall not commence until written approval has been received from the Secretary. Upon receipt of the Secretary's approval, the Proponent must make the Plan Publicly available as soon as practicable.</p>	Construction	n/a – complete	Not triggered
<p>7.3. As part of the Construction Environmental Management Plan required under condition 7.2 of this approval, the Proponent must prepare and implement, but is not limited to, the following Management Plans:</p> <p>a) a Noise Management Plan to detail measures to minimise noise emissions associated with the construction of the project. The Plan must include, but not necessarily be limited to:</p> <p>i) identification of all major sources of noise that may be emitted as a result of the Construction of the project;</p> <p>ii) specification of the noise criteria as it applies to a particular activity;</p> <p>iii) identification and implementation of best practice management techniques for minimisation of noise and vibration emissions;</p> <p>iv) procedures for the monitoring of noise emissions; and</p> <p>v) description of the procedures to be undertaken if any non-compliance is detected.</p> <p>b) a Traffic Management Plan to outline measures for the management and coordination of road works required under this approval and to minimise potential conflicts between different user groups. The Plan must be prepared in consultation with the RMS and Council and must include, but not necessarily be limited to:</p>	Construction	n/a – complete	Not triggered

Compliance Requirement	Development Phase	Monitoring Methodology	Evidence / Findings
<p>i) details of measures to minimise interactions between the project and other users of the roads such as the use of fencing, lights, barriers, traffic diversions etc;</p> <p>ii) procedures for informing the public where any road access will be restricted as a result of the project;</p> <p>iii) procedures to inform vehicle drivers and Crookwell Road business owners of the traffic routes to be used by heavy vehicles associated with the project;</p> <p>iv) procedures to manage construction traffic to ensure the safety of livestock and to minimise disruption to livestock, and school children and limit disruption to school bus timetables;</p> <p>v) speed limits to be observed along routes to and from the site and within the site;</p> <p>vi) minimum requirements for vehicle maintenance to address noise and exhaust emissions, particularly along roads in close proximity to residences;</p> <p>vii) precautionary measures such as signage to warn users of the Bicentennial National Trail about the construction activities for the project;</p> <p>viii) details of the expected behavioural requirements for vehicle drivers travelling to and from the site and within the site; and</p> <p>ix) prohibition of heavy vehicle access to Ross Bridge.</p> <p>c) a Flora and Fauna Management Plan to outline measures to protect and minimise loss of native vegetation and native fauna habitat as a result of construction of the project. The Plan must include, but not necessarily be limited to:</p> <p>i) plans showing terrestrial vegetation communities; important flora and fauna habitat areas;</p> <p>ii) locations where threatened species, populations or ecological communities have been recorded or are likely to occur; and areas to be cleared. The plans must also identify vegetation adjoining the site where this contains important habitat areas and/or threatened species, populations or ecological communities;</p> <p>iii) methods to manage impacts on flora and fauna species (terrestrial and aquatic) and their habitat which may be directly or indirectly affected by the project, such as location of fencing, procedures for clearing of vegetation or soil and procedures for re-locating hollows or installing nesting boxes.</p> <p>iv) rehabilitation details, such as use of locally native species in rehabilitation and landscaping works and methods to re-use topsoil and cleared vegetation;</p> <p>v) the impact avoidance and mitigation measures outlined in section 4 of the EA;</p> <p>vi) a Weed Management Strategy; and</p> <p>vii) a program for reporting on the effectiveness of terrestrial flora and fauna management measures. Management methods must be reviewed where found to be ineffective.</p>			
<p>Operation Environmental Management Plan (OEMP)</p> <p>7.4. The Proponent shall prepare and implement an Operation Environmental Management Plan in accordance with the Department's publication entitled Guideline for the Preparation of Environmental Management Plans (2004) or its latest revision. The Plan shall include but not necessarily be limited to:</p> <p>a) identification of all statutory and other obligations that the Proponent is required to fulfil in relation to the operation of the development, including all consents, licences, approvals and consultations;</p> <p>b) a management organisational chart identifying the roles and responsibilities for all relevant employees involved in the operation of the project;</p> <p>c) overall environmental policies and principles to be applied to the operation of the project;</p> <p>d) standards and performance measures to be applied to the project, and means by which environmental performance can be periodically reviewed and improved, where appropriate;</p> <p>e) management policies to ensure that environmental performance goals are met and to comply with the conditions of this approval;</p> <p>f) the Management Plans listed under condition 7.5 of this approval; and</p> <p>g) the environmental monitoring requirements outlined under this approval.</p> <p>The Plan shall be submitted for the approval of the Secretary no Later than one month prior to the commencement of Operation of the project or within such period as otherwise agreed by the Secretary. Operation must not commence until written approval has been received from the Secretary. Upon receipt of the Secretary's approval, the Proponent shall make the Plan publicly available as soon as practicable.</p>	Pre-Operation & Operation	<ul style="list-style-type: none"> ■ Review of the OEMP ■ Review of implementation procedures 	<p>Compliant</p> <p>The approval of the OEMP was verified in the Pre-Operation Compliance Report.</p> <p>The OEMP is implemented through a variety of project mechanisms, including site operating procedures, the responsibilities of the Site Environmental Manager, and staff induction and training. The Compliance tracking program and AEMR are the primary measures for monitoring compliance.</p>

Compliance Requirement	Development Phase	Monitoring Methodology	Evidence / Findings
<p>7.5. As part of the Operation Environmental Management Plan required under condition 7.4, the Proponent shall prepare and implement, but is not limited to the following Management Plans:</p> <p>a) a Noise Management Plan to outline measures to minimise noise emissions from the operation of the project. The Plan must include, but not necessarily be limited to:</p> <ul style="list-style-type: none"> i) details of procedures to ensure ongoing compliance with the operational noise limits specified in condition 2.15 as they apply to identified receptors. This should include identification of monitoring requirements; ii) identification and implementation of best practice management techniques for minimisation of noise emissions where reasonable and feasible; iii) measures to be undertaken to rectify annoying characteristics resulting from the operation of the project such as, but not limited to, infrasound or adverse mechanical noise from component failure; and iv) procedures and corrective actions to be undertaken if non-compliance is detected. <p>b) a Landscape Management Plan to outline measures to ensure appropriate development and maintenance of landscaping on the site to address the visual impacts arising from the project including, turbines, site access roads, substation and control and facilities building, as far as is reasonable and feasible. The Plan must be prepared by a qualified landscape architect and meet the requirements of Council, should there be any. The Plan must include, but not necessarily be limited to:</p> <ul style="list-style-type: none"> i) measures associated with the biodiversity offset package required under condition 2.35 and any remnant vegetation onsite; ii) details of landscaping to be undertaken at the site including locations for planting; iii) maximisation of use of flora species that are native to the locality and with low maintenance requirements; iv) a program for the removal of weeds introduced or spread as a result of the development at the site; and iii) a program for maintenance of all landscaped areas on the site to ensure these areas are kept in a tidy, healthy state. 	Pre-Operation & Operation	<ul style="list-style-type: none"> ■ Review of the OEMP ■ Review of implementation procedures 	<p>Compliant</p> <p>As per 7.4</p>
7.6. Within 3 years of the commencement of the operation of the project, or within 3 months of the approval of any modification to this approval, the Proponent shall review, and if necessary, revise the OEMP to the satisfaction of the Secretary. Following approval, the Proponent shall implement the updated OEMP to the satisfaction of the Secretary.	Operation	<ul style="list-style-type: none"> ■ Evidence of review and re-approval of the OEMP 	<p>Compliant</p> <p>This condition has been previously satisfied.</p> <p>The OEMP was reviewed in 2019 with only very minor amendments made.</p>
<p>Decommissioning Environmental Management Plan</p> <p>7.7. The Proponent shall prepare and implement a Decommissioning Environmental Management Plan for the project in accordance with the Guideline for the Preparation of Environmental Management Plans (DUAP 2004), or its latest revision, by 30 June 2016 and revised every 3 years thereafter, or as otherwise agreed by the Secretary. The plan must include:</p> <ul style="list-style-type: none"> a) a description of all activities to be undertaken on the site during decommissioning including an indication of stages of decommissioning, where relevant; b) statutory and other obligations that the Proponent is required to fulfil during decommissioning including all approvals, consultations and agreements required from authorities and other stakeholders, and key legislation and policies; c) details of how the environmental performance of the decommissioning works will be monitored, and what actions will be taken to address identified adverse environmental impacts. In particular, the following environmental performance issues shall be addressed in the Plan: d) measures to monitor and minimise soil erosion and the discharge of sediment and other pollutants to lands and/ or waters during construction activities, particularly during any construction works at or near drainage lines; and e) measures to monitor and manage dust emissions. f) a description of the roles and responsibilities for all relevant employees involved in the decommissioning of the project; g) complaints handling procedures during decommissioning; and h) the Management Plans listed under condition 7.8 of this approval. 	Operation & Decommissioning	<ul style="list-style-type: none"> ■ Evidence approval of the DEMP ■ Evidence of revision prior to December 2019 	<p>Compliant</p> <p>The 2016 AEMR states that an email from the Department of Planning and Environment confirming satisfaction of approval conditions 7.7 and 7.8 was sighted during that review.</p> <p>The DEMP was reviewed in September 2019 and an email regarding the review was sent to the Department of Planning and Environment on 20/12/2019.</p> <p>The DEMP is located on the project website.</p>
7.8. As part of the DEMP required under condition 7.7 of this approval, the Proponent must prepare and implement, but is not limited to, the management plans referred to in condition 7.3. For the purpose of this condition, all references to construction in condition 7.3 must be replaced with decommissioning.	Operation & Decommissioning	<ul style="list-style-type: none"> ■ Evidence approval of the DEMP 	<p>Compliant</p> <p>Email from the Department of Planning and Environment to GRWF dated 23 December 2016 confirming that approval conditions 7.7 and 7.8 have been satisfied was sighted.</p>
<p>8. ENVIRONMENTAL REPORTING</p> <p>Incident Reporting</p> <p>8.1. The Proponent shall notify the Secretary and any relevant Government authority of any incident with actual or potential significant off-site impacts on people or the biophysical environment as soon as practicable after the occurrence of the incident ("initial notification"). The Proponent must provide written details ("written report") of the incident to the Secretary and any relevant Government authority within seven days of the date on which the incident occurred.</p>	Construction, Operation & Decommissioning	<ul style="list-style-type: none"> ■ Incident reporting 	<p>Compliant</p> <p>During the review it was reported that there have not been any notifiable incidents. Incidents are managed through MyOSH.</p> <p>Incidents for the month are reviewed at the monthly HSE Meeting.</p> <p>GPS tracking is installed in all vehicles so that any reported incidents can be tracked as required.</p> <p>There is an incident reporting and investigation procedure.</p> <p>MyOSH includes a prompt to evaluate whether the incident is reportable to a regulator.</p>
8.2. The Proponent shall meet the requirements of the Secretary to address the cause or impact of any incident, as it relates to this approval, reported in accordance with condition 8.1 of this approval, within such period as the Secretary may require.	Construction, Operation & Decommissioning	<ul style="list-style-type: none"> ■ Incident reporting 	<p>Compliant</p> <p>During the review it was reported that there have not been any notifiable incidents during the 2020 AEMR reporting period.</p>

Appendix C

Review of Compliance Statement of Commitments

SoC	Compliance Requirement	Development Phase	Monitoring Methodology	Evidence / Findings
SoC1	The Proponent would determine the extent of planting with residents of properties within 3km of a wind turbine. This would include a site visit. Any such offer would remain in place for a period of 1 year after project construction. Screening options are detailed in Attachment 3. Landscaping will be provided as per the GRWFPL Landscaping Management Plan and in consultation with landowners.	Construction and Operation (to one year)	<ul style="list-style-type: none"> ■ Landscape Management Plan ■ Community engagement records 	Compliant The landscape maintenance period has now concluded.
SoC5a	An onsite representative to meet with residents at their property to discuss the noise issues experienced	Operation	<ul style="list-style-type: none"> ■ Community engagement records 	Compliant There were two separate noise complaints received in the 2020 AEMR reporting period. Both came from nearby neighbours. Both neighbours were consulted with about the noise complaints, the wind turbines were investigated and no issues were identified. In both cases the complainants were informed of the actions taken and no further complaints were received. Any complaints are managed in accordance with the Complaints Management Procedure.
SoC9	Develop and implement an operational noise compliance testing program.	Operation	<ul style="list-style-type: none"> ■ Noise Monitoring 	Compliant See Project Approval Condition 2.15 and 7.5.
SoC10	If operational monitoring identifies exceedances, the Proponent would give consideration to providing mechanical ventilation (to remove requirement for open windows), building acoustic treatments (improved glazing) or using turbine control features to manage excessive noise under particular conditions.	Operation	<ul style="list-style-type: none"> ■ Noise Monitoring 	Compliant During the AEMR it was reported that there have not been any validated noise exceedances during the 2020 AEMR period.
SoC22	Pest Animal Control Program - To reduce the attractiveness of the site to foraging raptors, rabbits would be controlled on the turbine ridges, carrion would be removed from the site as quickly as possible	Operation	<ul style="list-style-type: none"> ■ Pest Monitoring – formal and informal 	Compliant The Pest and Weed Management Plan is included in the OEMP. The plan was approved by the DIPE as part of overall OEMP approval. Goat and rabbit numbers reduced to nil in the 2020 AEMR period. Control efforts will focus on foxes, deer, pigs and hare during the 2021 AEMR period.
SoC23	Bird and Bat Monitoring Program <ul style="list-style-type: none"> • Pre-construction surveying would be undertaken to assist in managing bird and bat impacts (Powerful Owl would be a key species in this Pre-construction surveying). Results would be incorporated into the ongoing monitoring program • A monitoring program would be designed to document mortalities, remove carcasses and assess the effectiveness of controls in accordance with Section 9.3.1 • If mortalities exceed a pre-determined threshold (set out in the monitoring program), additional mitigation measures would be considered, such as diversion structures, turning off turbines at critical times, further habitat modification and enhancement of off-site habitats 	Pre-Operation & Operation	<ul style="list-style-type: none"> ■ BBAMP monitoring 	Compliant: A Bird and Bat Adaptive Management Plan (BBAMP) is included in the OEMP. The BBAMP was approved by the DIPE as part of overall OEMP approval. The BBAMP was subsequently amended and re-approved. The 2020 AEMR assessed that this condition has been discharged, with the exception of: <ul style="list-style-type: none"> • The continuation of routine reporting of bird and bat carcass finds under wind turbines by wind farm personnel, in accordance with the incidental carcass protocol. If any impact occurs the reporting and investigation requirements of the approved BBAMP should be implemented. There was one Wedge-tailed Eagle strike in 2020.
SoC35a	The Proponent would install a Radio/Television antenna in the vicinity of Crookwell which would improve the Radio/Television signal strength for the area surrounding the wind farm and for Crookwell. The commitment above has been modified after consultation with ULSC as follows: GRWFPL will provide funding for a suitable technical and commercial upgrade at an existing ULSC communications mast. The funding may up to \$100,000. The funding will independent of contributions to the Community Enhancement Fund. ULSC will be responsible for the construction, operation and maintenance of the new antennae facility.	Operation	<ul style="list-style-type: none"> ■ Contribution records 	Compliant During the 2016 AEMR it was reported that \$80,000 was provided to the Upper Lachlan Shire Council towards the installation of a new antenna at Crookwell. The antenna was commissioned in Feb 2016.
SoC38a	GRWFPL provided additional assessment of potential for impacts to point to point services to relevant stakeholders and will consult further with RFS in respect of its service between Mt Mary and Mt Gray.	All phases	<ul style="list-style-type: none"> ■ Community engagement records 	Compliant No complaints have been received in this regard in the 2020 AEMR reporting period.
SoC61	Range Road <ul style="list-style-type: none"> • The shadow flicker effects would be monitored following commissioning and any remedial measures to address concerns would be developed in consultation with the RTA and the Department of Planning 	Operation	<ul style="list-style-type: none"> ■ General observations ■ Community engagement records 	Compliant Shadow flicker has not been observed along Range Road. A search of Consultation Manager found that no complaints have been received with regard to shadow flicker during the 2020 AEMR period.
SoC65a	The Proponent would investigate the potential to house an RFS hall within the Wind Farm or at a suitable location identified in consultation with RFS near to the wind farm. This facility could also be used as a community hall. <ul style="list-style-type: none"> • The Proponent would offer the land to the RFS in perpetuity. • The construction, operation and maintenance of the RFS station would be the responsibility of the RFS 	Operation	<ul style="list-style-type: none"> ■ Stakeholder engagement records 	Compliant During the 2016 AEMR it was reported that Goldwind Capital purchased the Bannister Hall in December 2014 and that funding was provided (via the Community Fund) for the upgrade of the hall which is run by the Bannister Hall Association Incorporated. The local RFS use the hall for meetings and the RFS is currently considering building a shed at the premises.
SoC72	Shut down of turbines would commence if components reach critical temperatures or if directed by the RFS in the case of a nearby wildfire being declared (an all hours contact point would be available to the RFS during the bushfire period).	Operation	<ul style="list-style-type: none"> ■ Wind Farm Operation Records ■ Bushfire Risk Management Plan ■ Operational Procedures 	Compliant During the review it was confirmed that there was a procedure in place to shut down the turbines at the direction of RFS, however this requirement had not occurred during the 2020 AEMR reporting period.

SoC	Compliance Requirement	Development Phase	Monitoring Methodology	Evidence / Findings
	Remote alarming and maintenance procedures would also be used to minimise risks			The Site Manager is the all-hours contact person for RFS. The substation is the area of highest fire risk for the site. There are smoke alarms in the substation control room which are attached to the site SCADA system. The Bushfire Risk Management Plan outlines procedures to minimise the risk of fire on-site.
SoC73	Overhead transmission easements would be periodically inspected to monitor regrowth of encroaching vegetation	Operation	<ul style="list-style-type: none"> ■ Transmission easement inspection procedures ■ Transmission easement inspection records 	Compliant The transmission lines are scheduled for inspection twice a year, with the main inspection prior to fire season. Inspections involve both a visual inspection and thermal imaging. Three inspections were carried out during the 2020 AEMR reporting period.
SoC75	All vehicles onsite would follow established trails and minimise onsite movements	Construction & Operation	<ul style="list-style-type: none"> ■ Review of site procedures ■ General observation 	Compliant There are established tracks. During the review there were no observations or indications that vehicles were travelling outside the formed tracks.
SoC76	Machinery would be operated and maintained in a manner that minimises risk of hydrocarbon spills	Construction & Operation	<ul style="list-style-type: none"> ■ Review of site procedures ■ Review of incident records 	Compliant During the review it was noted that there are spill kits available at the main site compound. Any works outside of the compound are required to take spill kits with them. All employees are trained in how to use a spill kit. Any plant to be used on-site is required to complete the 'Plant Inspection Form' (HSE-FRM-0032, 20/05/18). Among other requirements this form requires that the plant does not have any fluid leaks. There were no spill incidents reported during the AEMR 2020 reporting period.
SoC77	Maintenance or re-fuelling of machinery would be carried out on hard-stand areas (i.e. existing or proposed road surface or hard-stand areas beneath turbines). Where possible, maintenance and re-fuelling would not occur on areas that either contain native vegetation, or would be revegetated	Construction & Operation	<ul style="list-style-type: none"> ■ Review of site procedures ■ Review of incident records 	Compliant Typically, re-fuelling is not undertaken on-site. The Bushfire Risk Management Plan states that where it is necessary to refuel on-site that re-fuelling must be completed on a hardstand, with spill kits available. There were no spill incidents reported during the AEMR 2020 reporting period.
SoC 83	A Water Management Strategy would be developed for the site as part of the Construction and Operational Environmental Management Plans. This would aim to integrate the total water cycle of the site in terms of water supply, stormwater and wastewater, an maximise the use of best management practice techniques for stormwater and wastewater management. Devices such as swales to disperse rather than concentrate runoff would be implemented. Water use would be devised in conjunction with the development of the construction drawings.	Construction & Operation	<ul style="list-style-type: none"> ■ Review of the CEMP ■ Review of the OEMP 	Compliant A Soil and Water Management Plan was developed as part of the Construction Environmental Management Plan. While the OEMP does not include a standalone Water Management Strategy, it contains water management strategies relating to waste mitigation of water and waste water and the maintenance manual contains procedures for maintaining on-site water management devices. The Department of Planning and Environment approved the most recent version of the OEMP on 14 March 2016, as per its letter sighted during the 2016 AEMR.
SoC86	Infrastructure would be bunded to ensure that the amounts of oil could be fully contained in the event of a leak. Bunding provisions would be regularly inspected	Operation	<ul style="list-style-type: none"> ■ Visual observation 	Compliant During the 2016 AEMR it was reported that bunds are designed to standard requirement.
SoC 87	Septic systems, if installed, would meet Upper Lachlan Council Standards.	Operation	<ul style="list-style-type: none"> ■ Review of installation records 	Compliant During the 2020 AEMR the following documents were sighted: <ul style="list-style-type: none"> - Approval to Install a Sewage Management Facility dated 8 January 2014 - Inspection Certificate dated 13/06/14 - Approval to Operate an On-site Sewage Management Facility, dated 07/07/2014. The septic system was inspected by Council on 31/07/18 and a new Approval to Operate was issued. The next inspection is due on 30/06/2022.
SoC 92a	Where feasible/reasonable the Proponent would implement a Sustainable Procurement Strategy with the goal of increasing local (regional and national) products required for the construction and operation of the wind farm.	All phases	<ul style="list-style-type: none"> ■ Review of site procedures 	Compliant While a Sustainable Procurement Strategy is not in place, during the review it was reported that the Project endeavours to use local contractors and employees where possible. Several examples were reported.
SoC 92b	The Proponent would source services from the local area including but not limited to: <ul style="list-style-type: none"> • Staff • Suppliers • Materials • Services • Food and consumables 	All phases	<ul style="list-style-type: none"> ■ Review of site practices 	Compliant During the review it was reported that the Project endeavours to use local contractors and employees where possible. Several examples were reported.
SoC94	Monitoring information collected during the operation of the wind farm would be made publicly available	Operation	<ul style="list-style-type: none"> ■ Review of the project website 	Compliant During the AEMR it was observed that a range of information is stored on the Project website including monitoring records.
SoC95b	The Proponent would provide a community education program for local schools which would include: <ul style="list-style-type: none"> • Visits to the wind farm • Information on renewable energy • Information on climate change issues 	Operation	<ul style="list-style-type: none"> ■ Review of site activities/programs 	Compliant During the review it was reported that there is an active schools' program. See section 2.11 for further detail.
SoC95c	The Proponent would hold an annual 'open day' at the wind farm to allow the public to visit the facility	Operation	<ul style="list-style-type: none"> ■ Review of site activities 	Compliant Due to the COVID-19 pandemic, site tours were suspended during the 2020 AEMR reporting period. The GRWF team were able to join a local community group's (Upper Lachlan Landcare) online school holiday workshop in 2020 called 'Blowing in the wind' and talk about the wind farm to parents and students. See section 2.11 for further details.

SoC	Compliance Requirement	Development Phase	Monitoring Methodology	Evidence / Findings
SoC95d	The proponent will strengthen its relationship with the community by improving its consultation efforts and undertaking regular interface with neighbours within 2km of the wind farm.		■ Review of site activities	Compliant See section 2.11
SoC95e	The proponent would provide an annual public report on the environmental and social performance of the wind farm and the consultation activities undertaken for the year	Operation	■ Review of project website	Compliant The following documents are published on the project website annually: - AEMR - Compliance Tracking Program - Complaints Register - CCC Meeting Minutes Social performance is reported on at each CCC meetings and the CCC meeting minutes are published on the project website.
SoC97	The Proponent would work with the involved landowners, the community and Upper Lachlan Shire Council to allow for the development of the wind farm as a tourist attraction, if this option becomes desirable to these three parties.	Operation	■ Review of site activities	Compliant During 2020, GRWF worked with Regional Development – Southern Inland Region and Crookwell Tourism to collaborate with other wind farms and promote tours to wind farms in the area. The wind farm continues to sponsor local sport teams and community events and engage with the community through activities such as attending presentations and providing an information stand at the Crookwell Show. See section 2.11 for further detail.
SoC108	Employee safety would be managed through the application a Health and Safety Plan	Operation	■ Review of site procedures	Compliant Goldwind maintains a system to manage health and safety. During the review a clear commitment to employee health and safety and an active implementation of the Operational Management Plan included in the OEMP was observed.
SoC109	If shadow flicker is found to be a nuisance to residents, conditions would be pre-programmed into the control system and individual wind turbines automatically shut down whenever these conditions are present	Operation	■ Community engagement records	Compliant No complaints relating to shadow flicker have been received during the AEMR reporting period.
SoC110	Shadow flicker effects on motorists using Range Road would be monitored following commissioning and any remedial measures to address concerns would be developed in consultation with the RTA and the Department of Planning	Operation	■ General observation ■ Community engagement records	Compliant No complaints have been received from motorists in relation to shadow flicker during the AEMR reporting period.
SoC128	Waste would be reused or recycled whenever possible. Separate recyclable materials receptacles would be provided (e.g. For glass, plastics and aluminium)	Construction & Operation	■ Site practices	Compliant During the review, waste minimisation practices were discussed and recycling bins were sighted.
SoC129	Packaging materials and general construction wastes would be disposed of, with Council's approval, at Council operated waste disposal centres	Construction & Operation	■ Site practices	Compliant Where possible packaging wastes are recycled.
SoC130	Toilet facilities would be provided for onsite workers and sullage from contractor's pump out toilet facilities would be disposed at the local sewage treatment plants or other suitable facility agreed to by Council	Construction & Operation	■ Visual inspection ■ Site practices	Compliant There is an on-site septic system. Sighted approval from ULSC. Monitored visually (and for odour) to identify maintenance/removal needs. The septic system has a six-monthly scheduled pump out service. The proponent provides porta loos for on-site service crews where required.
SoC133	Risk of chemical spills would be minimised and protocols would be in place to ensure prompt and effective clean-up of any accidental spills	Construction & Operation	■ Site procedures	Compliant The Pollution Incident Response Management Plan and Emergency Response Plan both provide provisions to reduce and respond to the risk of chemical spills. Both documents were sighted during the review, along with the site induction which also includes practices to reduce and respond to the risk of chemical spills. Spill kits were observed to be available at the time of the review.
SoC134	No permanent waste disposal would be utilised onsite	Construction & Operation	■ Site practices	Compliant During the review it was reported that no permanent waste disposal is utilised onsite.
SoC135	The contractor would implement a Spill Control Plan as part of its Erosion and Sediment Control Plan. Spill Control Plans would identify persons responsible for implementing the plan if a spill of a dangerous or hazardous waste should occur. Any spill that occurs, regardless of size or type of spill, would be reported to the Construction Manager. The event and clean up processes would be recorded. Spill protocols in the plan would dictate when the EPA should be notified	Construction & Operation	■ Site procedures	Compliant Spill response procedures are included in the Induction, Pollution Incident Response Management Plan (PIRMP) and the Emergency Response Plan (ERP). Each of these documents were sighted during the review. The PIRMP identifies spill responses, including responsibilities, record keeping and that any spill is reported to the Site Manager. The plan identifies requirements for notifying authorities. The PIRMP and ERP are reviewed in parallel to achieve consistency between the documents.
SoC138	Economic Liaison would continue with local economic development bodies to ensure the potential for local skill use and manufacturing is maximised	Construction & Operation	■ Site practices	Compliant During the review it was noted that the Project endeavours to use local contractors and employees where possible. Several examples were identified.

SoC	Compliance Requirement	Development Phase	Monitoring Methodology	Evidence / Findings
SoC139	<p>Future Rural Subdivisions</p> <p>The Proponent will provide reasonable and feasible noise mitigation measures to achieve a noise criterion (LAeq (10-minute) of 30dB(A) inside bedrooms (as outlined in the Guidelines for Community Noise (WHO, 1999) for no more than one dwelling on each parcel of land that:</p> <ul style="list-style-type: none">■ Is not associated with the project;■ Was lawfully in existence at the date of the approval;■ Was lawfully permitted to be developed for the purpose of a residential dwelling at the date of the approval;■ Is or was the subject of a valid construction certificate for a residential dwelling, lodged with the consent or a certifying authority within three years of the date of approval; and■ Would, but for the requirements of this condition, experience noise contributions from the project at the approved location of the residential dwelling in excess of the noise limits recommended in the SA EPA guidelines.	Operation & Decommissioning	<ul style="list-style-type: none">■ Noise monitoring and complaint management	<p>Compliant</p> <p>See Project Approval assessment.</p>

Appendix D

Review of Compliance Environmental Protection Licence

- EPL 20365, 26 February 2016.
- Sighted EPL Annual return for 2017
 - Sighted confirmation that the 2017 annual return was submitted on 16 November 2017 (in advance of deadline)
 - The Annual Review identified no items of non-compliance

Clause	Development Phase	Monitoring Methodology	Evidence / Findings						
1. Administrative Conditions A1 What the licence authorises and regulates A1.1 This licence authorises the carrying out of the scheduled development work listed below at the premises listed in A2: 73 wind turbines, substation, transmission connection, control room, facilitates building, access tracks, and minor road upgrades on the Gullen Range (Kialla, Bannister, Pomeroy, and Gurrundah sites)	All phases	■ General observation	Compliant During the AEMR review, there were no observations of unauthorised development.						
A1.2 This licence authorises the carrying out of the scheduled activities listed below at the premises specified in A2. The activities are listed according to their scheduled activity classification, fee-based activity classification and the scale of the operation. Unless otherwise further restricted by a condition of this licence, the scale at which the activity is carried out must not exceed the maximum scale specified in this condition. <table><tr><th>Scheduled Activity</th><th>Fee Based Activity</th><th>Scale</th></tr><tr><td>Electricity Generation</td><td>Electricity works (wind farms)</td><td>> 1000 - 4000 GWh generated</td></tr></table>	Scheduled Activity	Fee Based Activity	Scale	Electricity Generation	Electricity works (wind farms)	> 1000 - 4000 GWh generated	All phases	■ General observation	Compliant The Project complies with the listed generation scale.
Scheduled Activity	Fee Based Activity	Scale							
Electricity Generation	Electricity works (wind farms)	> 1000 - 4000 GWh generated							
A2 Premises or plant to which this licence applies A2.1 The licence applies to the following premises: <table><tr><th>Premises Details</th></tr><tr><td>GULLEN RANGE WIND FARM</td></tr><tr><td>250 STORRIERS LANE</td></tr><tr><td>BANNISTER</td></tr><tr><td>NSW 2580</td></tr></table>	Premises Details	GULLEN RANGE WIND FARM	250 STORRIERS LANE	BANNISTER	NSW 2580	All phases	n/a	n/a	
Premises Details									
GULLEN RANGE WIND FARM									
250 STORRIERS LANE									
BANNISTER									
NSW 2580									
A2.2 In relation to Condition A2.1, the premises is defined by the project boundary outlined (in blue) in the image: a) 'Background Noise Locations and EPL Reference Sites' (document number: GR-PM-DWG_0160, Revision C) prepared by Epuron and dated 23 September 2014 Note: The licence does not apply to the TransGrid 330kV switchyard shown in the above image as the 'switching station'. Note: A copy of the above document is contained on file EF13/9240 at the EPA's Queanbeyan Regional Office.	All phases	n/a	Noted						
A3 Information supplied to the EPA A3.1 Works and activities must be carried out in accordance with the proposal contained in the licence application, except as expressly provided by a condition of this licence. In this condition the reference to "the licence application" includes a reference to: <div><div>(a) the applications for any licences (including former pollution control approvals) which this licence replaces under the Protection of the Environment Operations (Savings and Transitional) Regulation 1998; and</div><div>(b) the licence information form provided by the licensee to the EPA to assist the EPA in connection with the issuing of this licence.</div></div>	All phases	■ Annual Return ■ AEMR ■ General Observation	Compliant Works and activities were observed to comply. There were previously three licence variations and in 2019 the EPA reviewed and made further changes to the Licence: <div><div>- Addition of noise requirement for each receptor</div><div>- Additional monitoring for tonality</div><div>- Removal of the requirement for tonality monitoring</div></div> In 2019 the EPA made the following licence variations: <div><div>- Removal of Conditions under L4 – relating to blasting;</div><div>- Removal of Conditions under L5 – relating to standard construction hours; and</div><div>- Removal of Condition R1.8 – in relation to reporting blasting exceedances.</div></div>						
2. Discharges to Air and Water and Application to Land P1 Location of monitoring/discharge points and areas P1.1 The following utilisation areas referred to in the table below are identified in this licence for the purposes of the monitoring and/or the setting of limits for any application of solids or liquids to the utilisation area.	All phases	As below	As below						
3. Limit Conditions L1 Pollution of waters L1.1 Except as may be expressly provided in any other condition of this licence, the licensee must comply with section 120 of the Protection of the Environment Operations Act 1997.	All phases	■ General Observation	Compliant No items of non-compliance were noted during the AEMR review.						
L2 Waste L2.1 The licensee must not cause, permit or allow any waste generated outside the premises to be received at the premises for storage, treatment, processing, reprocessing or disposal or any waste generated at the premises to be disposed of at the premises, except as expressly permitted by the licence	All phases	■ General Observation	Compliant No waste generated off-site is accepted to the site.						

Clause	Development Phase	Monitoring Methodology	Evidence / Findings																																																																																																																																																																																																																								
L2.2 The licensee must ensure that all liquid and/or non-liquid waste generated and/or stored on the site is assessed and classified in accordance with <i>Waste Classification Guidelines Part 1: Classifying Waste</i> (DECC, 2008) or any future guideline that may supersede that document.	All phases	■ Site practices and procedures	Compliant The site uses licenced contractors to remove all prescribed wastes. Example receipts were sighted during the audit.																																																																																																																																																																																																																								
L3 Noise Limits Operational Noise Limits L3.1 Noise generated from the premises must not exceed, at the nearest non-involved residential receivers: <div>(a) (a) 35dB(A); or</div> <div>(b) (b) the existing background noise level (LA90 (10-minute)), correlated to the integer wind speed at hub height at the wind farm site, by more than 5dB(A), whichever is the greater, for each integer wind speed (measured at hub height) from cut-in to rated power of the wind turbine generator when determined in accordance with the methodology provided in the Environmental Noise Guidelines: Wind Farms (South Australia EPA, 2003).</div> This condition applies to all relevant non-involved receivers (residences in existence at the date of the Project Approval, 2009).	Operation	■ Noise monitoring ■ Community engagement records	Compliant During the 2016 AEMR, monitoring and assessments were sighted that demonstrated that the project complies with this condition and is unlikely to incur any noise exceedances. Acceptance of these assessments by the EPA was sighted at the time of the 2016 AEMR. No further monitoring has been conducted during the current AEMR period. Two noise complaints were received during 2020 from nearby neighbours. The wind turbines were inspected and no issues were identified. In both cases the complainants were informed of the corrective actions taken and no further complaints have been received.																																																																																																																																																																																																																								
L3.2 For the purpose of measuring compliance with the noise limits in Condition L3.1, the location listed in the table below are the locations where noise compliance assessments can be undertaken. <table><tr><th>Location</th><th>3</th><th>4</th><th>5</th><th>6</th><th>7</th><th>8</th><th>9</th><th>10</th><th>11</th><th>12</th><th>hub height wind speed (m/s)</th></tr><tr><td>B8*</td><td>35</td><td>35</td><td>36</td><td>37</td><td>39</td><td>41</td><td>42</td><td>44</td><td>46</td><td>47</td><td></td></tr><tr><td>B11</td><td>35</td><td>35</td><td>36</td><td>36</td><td>36</td><td>35</td><td>35</td><td>37</td><td>38</td><td>41</td><td></td></tr><tr><td>B12a*</td><td>35</td><td>35</td><td>36</td><td>37</td><td>38</td><td>40</td><td>41</td><td>43</td><td>44</td><td>46</td><td></td></tr><tr><td>B13</td><td>35</td><td>36</td><td>36</td><td>37</td><td>38</td><td>39</td><td>41</td><td>42</td><td>43</td><td></td><td></td></tr><tr><td>B18*</td><td>35</td><td>35</td><td>35</td><td>36</td><td>37</td><td>38</td><td>40</td><td>41</td><td>43</td><td></td><td></td></tr><tr><td>B26</td><td>35</td><td>35</td><td>35</td><td>35</td><td>35</td><td>35</td><td>36</td><td>37</td><td>38</td><td></td><td></td></tr><tr><td>B27*</td><td>35</td><td>35</td><td>36</td><td>37</td><td>38</td><td>40</td><td>41</td><td>43</td><td>44</td><td>46</td><td></td></tr><tr><td>B29*</td><td>37</td><td>38</td><td>40</td><td>41</td><td>42</td><td>43</td><td>45</td><td>46</td><td>47</td><td>49</td><td></td></tr><tr><td>B33*</td><td>35</td><td>35</td><td>35</td><td>36</td><td>37</td><td>38</td><td>39</td><td>40</td><td>42</td><td></td><td></td></tr><tr><td>B53*</td><td>35</td><td>35</td><td>35</td><td>36</td><td>37</td><td>38</td><td>40</td><td>41</td><td>43</td><td></td><td></td></tr><tr><td>G31</td><td>37</td><td>38</td><td>38</td><td>40</td><td>40</td><td>41</td><td>42</td><td>43</td><td>44</td><td>46</td><td></td></tr><tr><td>G37*</td><td>35</td><td>35</td><td>35</td><td>36</td><td>36</td><td>39</td><td>40</td><td>42</td><td>43</td><td>44</td><td></td></tr><tr><td>G39</td><td>38</td><td>38</td><td>38</td><td>37</td><td>37</td><td>38</td><td>39</td><td>40</td><td>41</td><td>43</td><td></td></tr><tr><td>K1</td><td>35</td><td>35</td><td>35</td><td>35</td><td>35</td><td>35</td><td>37</td><td>39</td><td>42</td><td>44</td><td></td></tr><tr><td>K2</td><td>35</td><td>35</td><td>35</td><td>35</td><td>36</td><td>36</td><td>38</td><td>40</td><td>42</td><td>44</td><td></td></tr><tr><td>PW7*</td><td>35</td><td>35</td><td>36</td><td>37</td><td>38</td><td>40</td><td>42</td><td>44</td><td>46</td><td></td><td></td></tr><tr><td>PW9</td><td>35</td><td>35</td><td>36</td><td>36</td><td>37</td><td>38</td><td>40</td><td>41</td><td>43</td><td>45</td><td></td></tr></table> Note: Locations marked with * are understood to have entered into noise agreements with the licensee and are no longer considered 'non-involved' receivers for the purposes of the licence. These locations have been retained in the licence solely to assist with noise compliance assessment at other non-involved receivers. Hub height wind speed is referenced according to the masts listed in the <i>Gullen Range Revised Noise Assessment</i> dated 18 December 2014 (Marshall Day Acoustics: Rp 002 R06 2012154SY)	Location	3	4	5	6	7	8	9	10	11	12	hub height wind speed (m/s)	B8*	35	35	36	37	39	41	42	44	46	47		B11	35	35	36	36	36	35	35	37	38	41		B12a*	35	35	36	37	38	40	41	43	44	46		B13	35	36	36	37	38	39	41	42	43			B18*	35	35	35	36	37	38	40	41	43			B26	35	35	35	35	35	35	36	37	38			B27*	35	35	36	37	38	40	41	43	44	46		B29*	37	38	40	41	42	43	45	46	47	49		B33*	35	35	35	36	37	38	39	40	42			B53*	35	35	35	36	37	38	40	41	43			G31	37	38	38	40	40	41	42	43	44	46		G37*	35	35	35	36	36	39	40	42	43	44		G39	38	38	38	37	37	38	39	40	41	43		K1	35	35	35	35	35	35	37	39	42	44		K2	35	35	35	35	36	36	38	40	42	44		PW7*	35	35	36	37	38	40	42	44	46			PW9	35	35	36	36	37	38	40	41	43	45		Operation	As per L3.1.	Compliant As per L3.1.
Location	3	4	5	6	7	8	9	10	11	12	hub height wind speed (m/s)																																																																																																																																																																																																																
B8*	35	35	36	37	39	41	42	44	46	47																																																																																																																																																																																																																	
B11	35	35	36	36	36	35	35	37	38	41																																																																																																																																																																																																																	
B12a*	35	35	36	37	38	40	41	43	44	46																																																																																																																																																																																																																	
B13	35	36	36	37	38	39	41	42	43																																																																																																																																																																																																																		
B18*	35	35	35	36	37	38	40	41	43																																																																																																																																																																																																																		
B26	35	35	35	35	35	35	36	37	38																																																																																																																																																																																																																		
B27*	35	35	36	37	38	40	41	43	44	46																																																																																																																																																																																																																	
B29*	37	38	40	41	42	43	45	46	47	49																																																																																																																																																																																																																	
B33*	35	35	35	36	37	38	39	40	42																																																																																																																																																																																																																		
B53*	35	35	35	36	37	38	40	41	43																																																																																																																																																																																																																		
G31	37	38	38	40	40	41	42	43	44	46																																																																																																																																																																																																																	
G37*	35	35	35	36	36	39	40	42	43	44																																																																																																																																																																																																																	
G39	38	38	38	37	37	38	39	40	41	43																																																																																																																																																																																																																	
K1	35	35	35	35	35	35	37	39	42	44																																																																																																																																																																																																																	
K2	35	35	35	35	36	36	38	40	42	44																																																																																																																																																																																																																	
PW7*	35	35	36	37	38	40	42	44	46																																																																																																																																																																																																																		
PW9	35	35	36	36	37	38	40	41	43	45																																																																																																																																																																																																																	
L3.3 Location data for the receivers referred to in Condition L3.2 can be found in the table below. <table><tr><th>Location</th><th>Easting</th><th>Northing</th></tr><tr><td>B8</td><td>725764</td><td>6171873</td></tr><tr><td>B11</td><td>725245</td><td>6168673</td></tr><tr><td>B12a</td><td>724847</td><td>6174832</td></tr><tr><td>B13</td><td>725472</td><td>6179328</td></tr><tr><td>B18</td><td>722690</td><td>6172850</td></tr><tr><td>B26</td><td>725032</td><td>6176909</td></tr><tr><td>B27</td><td>722879</td><td>6175614</td></tr><tr><td>B29</td><td>721644</td><td>6195209</td></tr><tr><td>B33</td><td>724946</td><td>6172802</td></tr><tr><td>B53</td><td>722272</td><td>6174060</td></tr><tr><td>G31</td><td>727533</td><td>6183621</td></tr><tr><td>G37</td><td>726218</td><td>6161915</td></tr><tr><td>G39</td><td>726556</td><td>6166133</td></tr><tr><td>K1</td><td>724165</td><td>6178433</td></tr><tr><td>K2</td><td>721495</td><td>6178960</td></tr><tr><td>PW7</td><td>725225</td><td>6166206</td></tr><tr><td>PW9</td><td>723273</td><td>6160968</td></tr></table>	Location	Easting	Northing	B8	725764	6171873	B11	725245	6168673	B12a	724847	6174832	B13	725472	6179328	B18	722690	6172850	B26	725032	6176909	B27	722879	6175614	B29	721644	6195209	B33	724946	6172802	B53	722272	6174060	G31	727533	6183621	G37	726218	6161915	G39	726556	6166133	K1	724165	6178433	K2	721495	6178960	PW7	725225	6166206	PW9	723273	6160968	Operation	As per L3.1.	Compliant As per L3.1.																																																																																																																																																																		
Location	Easting	Northing																																																																																																																																																																																																																									
B8	725764	6171873																																																																																																																																																																																																																									
B11	725245	6168673																																																																																																																																																																																																																									
B12a	724847	6174832																																																																																																																																																																																																																									
B13	725472	6179328																																																																																																																																																																																																																									
B18	722690	6172850																																																																																																																																																																																																																									
B26	725032	6176909																																																																																																																																																																																																																									
B27	722879	6175614																																																																																																																																																																																																																									
B29	721644	6195209																																																																																																																																																																																																																									
B33	724946	6172802																																																																																																																																																																																																																									
B53	722272	6174060																																																																																																																																																																																																																									
G31	727533	6183621																																																																																																																																																																																																																									
G37	726218	6161915																																																																																																																																																																																																																									
G39	726556	6166133																																																																																																																																																																																																																									
K1	724165	6178433																																																																																																																																																																																																																									
K2	721495	6178960																																																																																																																																																																																																																									
PW7	725225	6166206																																																																																																																																																																																																																									
PW9	723273	6160968																																																																																																																																																																																																																									
L3.4 Notwithstanding Condition L3.1, the noise limit specified under that condition does not apply to any sensitive receiver where noise agreement is in place between the licensee and the respective landowner(s) in relation to noise impacts and/or noise limits.	Operation	As per L3.1.	Compliant As per L3.1.																																																																																																																																																																																																																								
L3.5 To determine compliance with Condition L3.1, the modification factors for tonality presented in Section 4 of the <i>New South Wales Industrial Noise Policy</i> (NSW EPA, 2000) must be applied to the measured noise level where applicable	Operation	As per L3.1.	Compliant As per L3.1.																																																																																																																																																																																																																								

Clause	Development Phase	Monitoring Methodology	Evidence / Findings
L3.6 To determine compliance with Condition L3.1, noise from the premises must be measured at the most affected point within the residential boundary, or at the most affected point within 20 metres of the dwelling, where the dwelling is more than 20 metres from the boundary. Noise levels are determined in accordance with the methodology provided in the <i>Environmental Noise Guidelines: Wind Farms</i> (South Australia EPA, 2003).	Operation	As per L3.1.	Compliant As per L3.1.
L4 Blasting Airblast Overpressure L4.1 The overpressure level from blasting operations on the premises must not exceed 115dB (Lin Peak) for more than 5% of the total number of blasts over a period of 12 months (annual reporting period). Error margins associated with any monitoring equipment used to measure this are not to be taken into account in determining whether or not the limit has been exceeded.	Construction	n/a – complete	Not triggered
L4.2 The overpressure level from blasting operations at the premises must not exceed 120dB (Lin Peak) at any time. Error margins associated with any monitoring equipment used to measure this are not to be taken into account in determining whether or not the limit has been exceeded.	Construction	n/a – complete	Not triggered
Peak Particle Velocity L4.3 Ground vibration peak particle velocity from the blasting operations at the premises must not exceed 5mm/sec for more than 5% of the total number of blasts over a period of 12 months (annual reporting period). Error margins associated with any monitoring equipment used to measure this are not to be taken into account in determining whether or not the limit has been exceeded.	Construction	n/a – complete	Not triggered
L4.4 Ground vibration peak particle velocity from the blasting operations at the premises must not exceed 10mm/sec at any time. Error margins associated with any monitoring equipment used to measure this are not to be taken into account in determining whether or not the limit has been exceeded.	Construction	n/a – complete	Not triggered
L4.5 Blasting operations at the premises may only take place between: (a) (a) 9:00am and 5:00pm Monday to Friday; (b) (b) 9:00am and 1:00pm on Saturdays; and (c) (c) at no time on Sundays or Public Holidays. Where compelling safety reasons exist, the EPA may permit a blast to occur outside the abovementioned hours. Prior written notification of any such blast must be made to the EPA. Note: Prior to each blasting event outside of the permitted hours the licensee must notify the relevant local council and potentially affected landowners of the time and location of the blasting event and provide a contact point for inquiries and complaints.	Construction	n/a – complete	Not triggered
L4.6 The airblast overpressure and ground vibration levels in Conditions L4.1 to L4.4 do not apply at noise sensitive locations that are owned by the licensee or subject to a private agreement, relating to airblast overpressure and ground vibration levels, between the licensee and land owner.	Construction	n/a – complete	Not triggered
L5 Hours of operation L5.1 Standard construction hours Unless otherwise specified by any other condition of this licence, all construction activities are: (d) restricted to between the hours of 7:00am and 6:00pm Monday to Friday; (e) restricted to between the hours of 8:00am and 1:00pm Saturday; and (f) not to be undertaken on Sundays or Public Holidays.	Construction	n/a – complete	Not triggered
L5.2 The following activities may be carried out in association with construction outside of these hours: (g) any works that do not cause noise emissions to be audible (defined as 5dBA above the background noise level) at any nearby residences not located on the premises; (h) the delivery of materials as requested by Police or other authorities for safety reasons; and (i) emergency work to avoid the loss of lives, property and/or to prevent environmental harm. Any work undertaken outside the specified construction hours, other than those specified in (a) – (c) of this condition must not be undertaken without prior consent of the EPA.	Construction	n/a – complete	Not triggered
L5.3 The hours of construction specified in Condition L5.1 may be varied with written consent if the EPA is satisfied that the amenity of the residents in the locality will not be adversely affected.	Construction	n/a – complete	Not triggered
L5.4 Any request to alter the hours of construction specified under Condition L5.1 shall be: a) considered on a case-by-case basis; and b) accompanied by details of the nature of and need for activities to be conducted during the varied construction hours and any other information necessary to reasonably determine that activities undertaken during the varied construction hours will not adversely impact on the acoustic amenity of receptors in the vicinity of the site. Any affected residential receivers must be informed of the timing and duration of work approved under this condition at least 48 hours before that work commences. Note: In order to alter hours of construction, consent must also be obtained from the Director General, Department of Planning & Infrastructure (as per the Project Approval).	Construction	n/a – complete	Not triggered

Clause	Development Phase	Monitoring Methodology	Evidence / Findings
4 Operating Conditions O1 Activities must be carried out in a competent manner O1.1 Licensed activities must be carried out in a competent manner. This includes: a) the processing, handling, movement and storage of materials and substances used to carry out the activity; and b) the treatment, storage, processing, reprocessing, transport and disposal of waste generated by the activity.	Operation	■ Annual Return ■ AEMR ■ General Observation ■ Environmental Representative reviews	Compliant General observations support compliance with this condition.
O2 Maintenance of plant and equipment O2.1 All plant and equipment installed at the premises or used in connection with the licensed activity: a) must be maintained in a proper and efficient condition; and b) must be operated in a proper and efficient manner.	Operation	■ Site operating procedures ■ General observation	Compliant General observations support compliance with this condition.
O3 Dust O3.1 Activities occurring in or on the premises must be carried out in a manner that will minimise the generation, or emission from the premises, of wind-blown or traffic generated dust.	Operation	■ Site operating procedures ■ General observation	Compliant The OEMP and induction outline measures to minimise dust generation. There are speed limits on site to help manage dust (40km/h unless dusty conditions at which point drops to 20km/hr). There were no observations of vehicles exceeding the speed limits during the review. Vehicles are fitted with GPS to allow tracking of location, speed and braking practices. During the review it was reporting that water carts are used on an as needs basis. No complaints relating to dust were made during the 2020 AEMR reporting period.
O4 Emergency response O4.1 The licensee must maintain, and implement as necessary, a current emergency response plan for the premises. The licensee must keep the emergency response plan on the premises at all times. The emergency response plan must document systems and procedures to deal with all types of incidents (e.g. spills, explosions or fire) that may occur at the premises or that may be associated with activities that occur at the premises and which are likely to cause harm to the environment. If a current emergency response plan does not exist at the date on which this condition is attached to the licence, the licensee must develop an emergency response plan within three months of that date.	Operation	■ Review of Emergency Response Plan	Compliant Sighted “Emergency Response Plan”. This document includes response procedures for a range of scenarios. This document was sighted at the main site compound. The Induction and the PIRMP also includes procedures for in the event of an emergency.
O5 Other operating conditions Bundling and Spill Management O5.1 The licensee must store and handle all chemicals on site in accordance with the <i>Storing and Handling liquids: Environment Protection, Participants Manual: Appendix: Technical Considerations</i> (DECC, 2007).	Operation	■ Review Spill Management Plan ■ Review Spill Training ■ Observe chemical storage practices	Compliant The process for managing chemicals on site was discussed during the review. This includes the use of MyOSH to document and manage the SDS Register, training, and regular audits. Dangerous goods are stored in bunded areas. The bunds are designed according to the Australian Standard requirements. The SDS Register was reviewed and appeared to be in order.
5 Monitoring and Recording Conditions M1 Monitoring Records M1.1 The results of any monitoring required to be conducted by this licence or a load calculation protocol must be recorded and retained as set out in this condition.	Operation	As below	As below
M1.2 All records required to be kept by this licence must be: a) in a legible form, or in a form that can readily be reduced to a legible form; b) kept for at least 4 years after the monitoring or event to which they relate took place; and c) produced in a legible form to any authorised officer of the EPA who asks to see them.	Operation	■ Record keeping practices	Compliant Monitoring records were sighted during the review and all complied with the requirements of this condition. Monitoring records have been kept since operation commenced and an awareness of the record keeping requirement was demonstrated. There have not been any requests from the EPA to sight the monitoring records.
M1.3 The following records must be kept in respect of any samples required to be collected for the purposes this licence: a) the date(s) on which the sample was taken; b) the time(s) at which the sample was collected; c) the point at which the sample was taken; and d) the name of the person who collected the sample.	Operation	■ Record keeping practices	Compliant Monitoring records were sighted during the review and all complied with the requirements of this condition.
M2 Recording of pollution complaints M2.1 The licensee must keep a legible record of all complaints made to the licensee or any employee or agent of the licensee in relation to pollution arising from any activity to which this licence applies.	Operation	■ Review complaints register	Compliant Sighted “Complaints Register”.
M2.2 The record must include details of the following: a) the date and time of the complaint; b) the method by which the complaint was made; c) any personal details of the complainant which were provided by the complainant or, if no such details were provided, a note to that effect;	Operation	■ Review complaints register	Compliant Sighted “Complaints Register”. The register contains the relevant information.

Clause	Development Phase	Monitoring Methodology	Evidence / Findings
d) the nature of the complaint; e) the action taken by the licensee in relation to the complaint, including any follow-up contact with the complainant; and f) if no action was taken by the licensee, the reasons why no action was taken.			
M2.3 The record of a complaint must be kept for at least 4 years after the complaint was made.	Operation	■ Review complaints register	Compliant Records of all complaints have been kept since operation commenced and an awareness of the record keeping requirement was demonstrated. These records are stored in Consultation Manager.
M2.4 The record must be produced to any authorised officer of the EPA who asks to see them.	Operation	■ Review complaints register	Compliant There have not been any requests from EPA to sight the complaint records.
M3 Telephone complaints line M3.1 The licensee must operate during its operating hours a telephone complaints line for the purpose receiving any complaints from members of the public in relation to activities conducted at the premises or by the vehicle or mobile plant, unless otherwise specified in the licence.	Operation	■ Review telephone line operation	Compliant During the review it was observed that a telephone complaints line is in operation.
M3.2 The licensee must notify the public of the complaints line telephone number and the fact that it is a complaints line so that the impacted community knows how to make a complaint.	Operation	■ Review project website	Compliant The telephone number is listed on the Project website.
M3.3 The preceding two conditions do not apply until three months after the date of the issue of this licence.	Operation	n/a	n/a
6 Reporting Conditions R1 Annual return documents R1.1 The licensee must complete and supply to the EPA an Annual Return in the approved form comprising: 1. a Statement of Compliance, 2. a Monitoring and Complaints Summary, 3. a Statement of Compliance – Licence Conditions, 4. a Statement of Compliance – Load based Fee, 5. a Statement of Compliance – Requirement to Prepare Pollution Incident Response Management Plan 6. a Statement of Compliance – Requirement to Publish Pollution Monitoring Data, 7. a Statement of Compliance – Environmental Management Systems and Practices; and 8. a Statement of Compliance – Environmental Improvement Works. At the end of each reporting period, the EPA will provide to the licensee a copy of the form that must be completed and returned to the EPA.	Operation	■ Review Annual Return	Compliant The most recent annual return was sighted. No non-compliances were recorded in the return. The return was submitted within the required reporting period.
R1.2 An Annual Return must be prepared in respect of each reporting period, except as provided below. Note: The term “reporting period” is defined in the dictionary at the end of this licence. Do not complete the Annual Return until after the end of the reporting period.	Operation	■ Review Annual Return	Compliant See below.
R1.3 Where this licence is transferred from the licensee to a new licensee: a) the transferring licensee must prepare an Annual return for the period commencing on the first day of the reporting period and ending on the date the application for the transfer of the licence to the new licensee is granted; and b) the new licensee must prepare an Annual Return for the period commencing on the date the application for the transfer of the licence is granted and ending on the last day of the reporting period. Note: An application to transfer a licence must be made in the approved form for this purpose.	Operation	■ Review Annual Return	Compliant To date, this scenario has not occurred.
R1.4 where this licence is surrendered by the licensee or revoked by the EPA or Minister, the licensee must prepare an Annual Return in respect of the period commencing on the first day of the reporting period and ending on: a) in relation to the surrender of a licence – the date when notice in writing of approval of the surrender is given; or b) in relation to the revocation of the licence – the date from which notice revoking the licence operates.	Operation	■ Review Annual Return	Compliant To date, this scenario has not occurred.
R1.5 The Annual Return for the reporting period must be supplied to the EPA by registered post not later than 60 days after the end of each reporting period or in the case of a transferring licence not later than 60 days after the date the transfer was granted (the ‘due date’).	Operation	■ Review Annual Return submission date	Compliant The return was submitted within the required reporting period.
R1.6 The licensee must retain a copy of the Annual Return supplied to the EPA for a period of at least 4 years after the Annual Return was due to be supplied to the EPA.	Operation	■ Review Annual Return records	Compliant This documentation has been retained and an awareness of this requirement was demonstrated during the review.
R1.7 Within the Annual Return, the Statements of Compliance must be certified and the Monitoring and Complaints Summary must be signed by: a) the licence holder; or b) a person approved in writing by the EPA to sign on behalf of the licence holder.	Operation	■ Review Annual Return	Compliant The annual return was sighted, including the required signatures.

Clause	Development Phase	Monitoring Methodology	Evidence / Findings
R1.8 The licensee must report any exceedance of the licence blasting limits to the regional office of the EPA as soon as practicable after the exceedance becomes known to the licensee or to one of the licensee's employees or agents.	Construction	n/a – complete	Not triggered
R2 Notification of environmental harm R2.1 Notifications must be made by telephoning the Environment Line service on 131 555. Note: The licensee or its employees must notify all relevant authorities of incidents causing or threatening material harm to the environment immediately after the person becomes aware of the incident in accordance with the requirements of Part 5.7 of the Act.	Operation	■ Incident reporting procedures and records	Compliant There have not been any incidences of reportable environmental harm.
R2.2 The licensee must provide written details of the notification to the EPA within 7 days of the date on which the incident occurred.	Operation	■ Incident reporting procedures and records	Compliant As per R2.1.
R3 Written Report R3.1 Where an authorised officer of the EPA suspects on reasonable grounds that: a) where this licence applies to premises, an event has occurred at the premises; or b) where this licence applies to vehicles or mobile plant, an event has occurred in connection with the carrying out of the activities authorised by this licence, and the event has caused, is causing or is likely to cause material harm to the environment (whether the harm occurs on or off premises to which the licence applies), the authorised officer may request a written report of the event.	Operation	■ Incident reporting records	Compliant There have not been any situations that have invoked this condition.
R3.2 The licensee must make all reasonable inquiries in relation to the event and supply the report to the EPA within such time as may be specified in the request.	Operation	■ Incident reporting records	Compliant As per R3.1.
R3.3 The request may require a report which includes any or all of the following information: c) the cause, time and duration of the event; d) the type, volume and concentration of every pollutant discharged as a result of the event; e) the name, address and business hours telephone number of employees or agents of the licensee, or a specified class of them, who witnessed the event; f) the name, address and business hours telephone number of every other person (of whom the licensee is aware) who witnessed the event, unless the licensee has been unable to obtain that information after making reasonable effort; g) action taken by the licence in relation to the event, including any follow-up contact with any complaints; h) details of any measure taken or proposed to be taken to prevent or mitigate against a recurrence of such an event; and i) any other relevant matters.	Operation	■ Incident reporting records	Compliant As per R3.1.
R3.4 The EPA may make a written request for further details in relation to any of the above matters if it is not satisfied with the report provided by the licensee. The licensee must provide such further details to the EPA within the time specified in the request.	Operation	■ Incident reporting records	Compliant As per R3.1.
7 General Conditions G1 Copy of licence kept at the premises or plant G1.1 A copy of this licence must be kept at the premises to which the licence applies.	Operation	■ Review licence availability	Compliant A copy of the licence was sighted at the site compound.
G1.2 The licence must be produced to any authorised officer of the EPA who asks to see it.	Operation	■ Review licence availability and any requests form EPA	Compliant There had not been any instances of an EPA officer requesting to sight the licence.
G1.3 The licence must be available for inspection by any employee or agent of the licensee working at the premises.	Operation	■ Review licence availability	Compliant A copy of the licence is on site at the site compound, stored in a location that is available to all staff members and visitors.