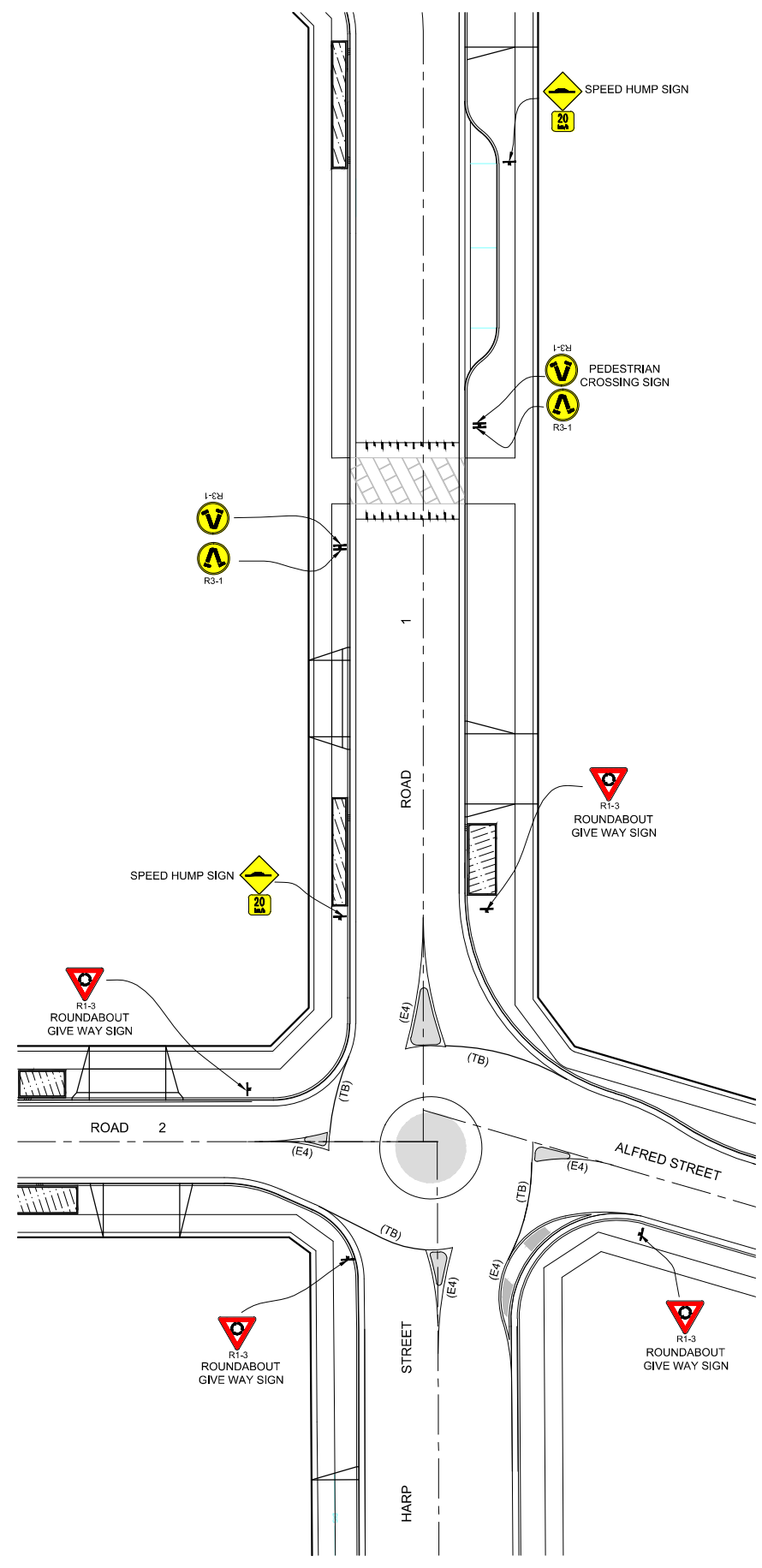
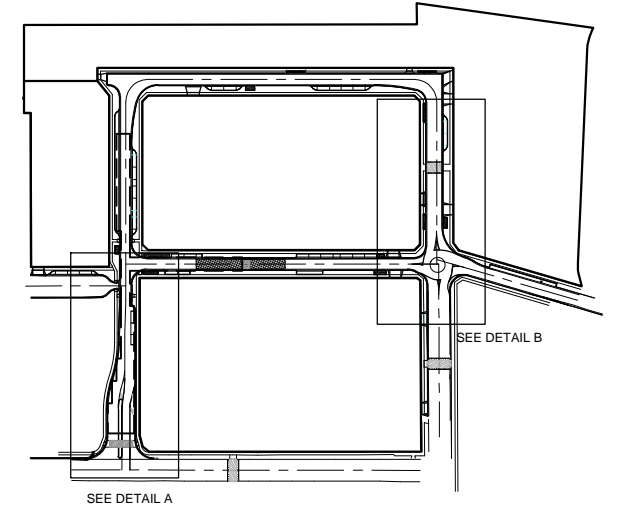


DETAIL A
SCALE 1:250



DETAIL B
SCALE 1:250



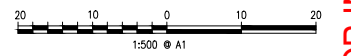
LINETYPE	USE	DIMENSION	COLOUR
TF1	STOP LINE (WHEN USED WITH A STOP SIGN)	0.20	WHITE
TB	GIVE WAY LINES	0.30	WHITE
E4	OUTLINE OF TRAFFIC ISLAND OR FREEWAY RAMP GORE	0.20	WHITE
C1	CONTINUITY LINE	0.20	WHITE
L3	LANE LINE	0.80	WHITE
PX	PEDESTRIAN CROSSING	0.450 (width of stripes), 3.600 (width of crossing)	WHITE

LINE MARKING NOTES

- GENERALLY PAVEMENT MARKING SHALL BE THERMOPLASTIC TYPE LINEMAKING PAINT IN ACCORDANCE WITH RTA "INTERIM GUIDE TO SIGNS AND MARKINGS" AND WHERE APPLICABLE AS 1742.2 UNLESS OTHERWISE APPROVED ON THE ENGINEERING PLANS.
- THE RTA DOCUMENT SHALL SUPERSEDE AS 1742.2 WHERE DISCREPANCIES BETWEEN THE DOCUMENTS OCCUR.
- THE FACE OF ALL ISLAND OR MEDIAN NOSES & FLARES AS A MINIMUM SHALL BE PAINTED REFLECTIVE WHITE.
- SIGHT DISTANCE WARRANTS SHALL BE IN ACCORDANCE WITH AUSTRROADS AND WHERE ON CLASSIFIED ROADS THE RTA REQUIREMENTS FOR CENTRAL PAVEMENT MARKING.
- LINE TYPE WARRANTS SHALL BE IN ACCORDANCE WITH NOTE 1.
- DIRECTIONAL ARROWS, CHEVRONS, PEDESTRIAN CROSSINGS, ADVANCE PEDESTRIAN CROSSING WARNING MARKINGS ETC. SHALL BE PROVIDED IN ACCORDANCE WITH NOTE 1.
- RAISED PAVEMENT MARKERS WITH ONE REFLECTIVE FACE (MONO) SHALL BE ORIENTATED TO FACE THE ONCOMING TRAFFIC.
- RAISED PAVEMENT MARKERS SHALL BE PROVIDED SO AS NOT TO PRESENT A HAZARD TO CYCLISTS.

NOTE:

REFER DWG. 321 FOR FURTHER SIGNAGE DETAILS



Project: PROPOSED SITE ACCESS
CLEMTON PARK VILLAGE
LOT 1 D.P.721721 & LOT A D.P.431356 60 CHARLOTTE STREET,
CAMPSIE

Principal: AUSTRALAND & LASALLE		Council Ref: MP 08_00087, MP 07_0106	
Scale: 1:500	Date: 27.06.12	L.G.A. CANTERBURY	
Calc's: M.V.	Drawn: M.V.	Proj.Man: A.C.	Client Ref:



ABN 77 050 209 981
Level 4, Suite 400
16-18 Cambridge St
EPPING NSW 2121
PO Box 233
EPPING NSW 1710

ACN 050 209 981
DX 4408 EPPING
Tel. 9869-1855
Fax. 9869-2341
reception@craigandrhodes.com.au
www.craigandrhodes.com.au
© Craig & Rhodes



Our Ref: 048-11
Dwg File Ref. (Rev) - Sheet Ref.
048-11C_321 [02] - 320

FOR INFORMATION ONLY