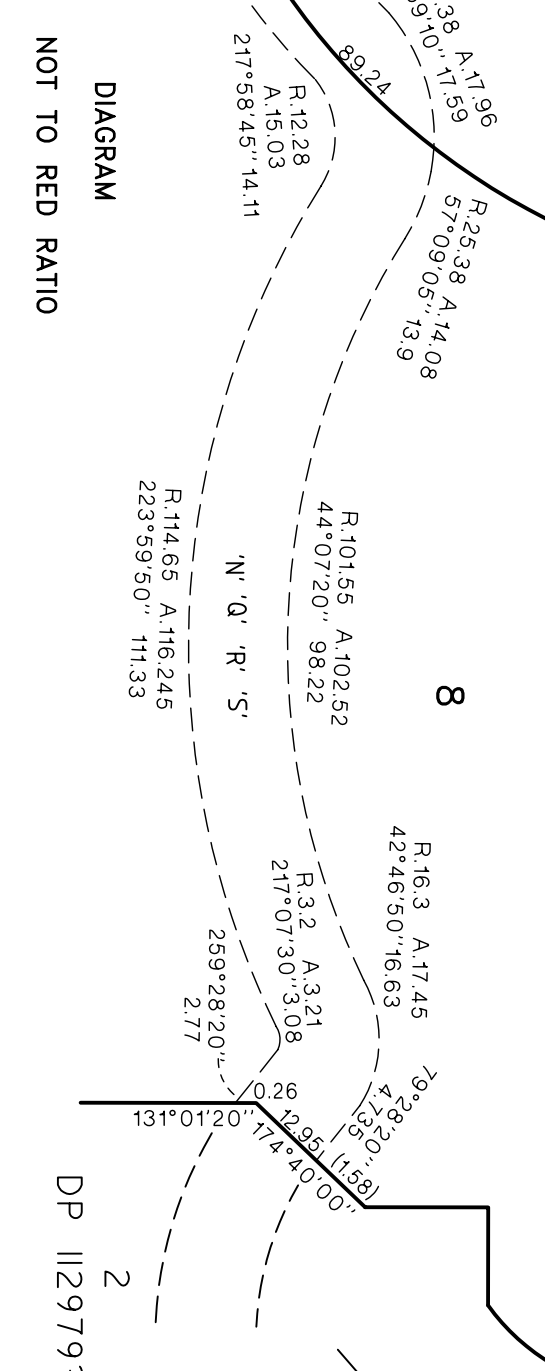


- NOTES**
- 'A' - EASEMENT FOR DRAINAGE (WIDE D.P.631907)
  - 'B' - SUBSTATION PREMISES No.2576 (WIDE R389437 & D.P.452190)
  - 'C' - EASEMENT FOR ELECTRICITY PURPOSES 6.705 WIDE (WIDE R389437 & D.P.452190)
  - 'D' - RIGHT OF WAY 3.66 & 4.185 WIDE (WIDE R389437 & D.P.452190)
  - 'L' - EASEMENT TO DRAIN WATER 2 WIDE (WIDE D.P.826426)
  - 'M' - EASEMENT TO DRAIN WATER 2.5 WIDE (WIDE D.P.836975)
  - 'N' - RIGHT OF CARRIAGEWAY AND EASEMENT FOR SERVICES 1.335, 6.77 & 13.1 WIDE AND VARIABLE WIDTH (WIDE D.P.1129793)
  - 'P' - RIGHT OF CARRIAGEWAY 12.3 & 19.1 WIDE AND VARIABLE WIDTH (D.P.1129793)
  - 'Q' - EASEMENT FOR SERVICES 12.3 & 19.1 WIDE AND VARIABLE WIDTH (D.P.1129793)
  - 'R' - EASEMENT FOR SERVICES 13.1 WIDE
  - 'S' - RIGHT OF CARRIAGEWAY 13.1 WIDE



00	10	20	30	40	50	60	70	80	90	100	110	120	130	140
Table of mm														

Surveyor : ANDREW P. MASON  
 Date of Survey : 1.04.2010  
 SURVEYOR'S REFERENCE: 32130-62

PLAN OF SUBDIVISION OF LOTS 3 & 6 DP 1129793

L G A RYDE  
 Suburb/Locality: RYDE  
 Subdivision No:  
 Lengths are in metres. Reduction Ratio 1:1500

Registered:

XREF 32130-X2  
 32130-64  
 4.6.2010  
 RED. RATIO 1:1500 A2

1	2	3	4	5	6	7	8	9	10
D.P.615158	D.P.740453	D.P.8329	S.P.68623	S.P.63297	D.P.376702				

1	2	3	4	5	6	7	8	9	10	11	12	13
D.P.12963	D.P.8524	D.P.8	D.P.3	D.P.2	D.P.9	D.P.8	D.P.3	D.P.2	D.P.9	D.P.8	D.P.3	D.P.2