

**PROPOSED  
ECO-TOURISM  
DEVELOPMENT  
LOT490  
KINGSCLIFF**

FOR

**LEIGHTON PROPERTIES  
RESORTS PTY LIMITED**

AREA :

ASSOCIATED CONSULTANTS :

AMEND	DATE	DESCRIPTION	APPR.
D	Dec 09	Minor Amendments	
C	April 09	Revised layout	
B	29.10.08	S.M.P NOTES AMENDED	
A	011108	Original submission	

THESE DESIGNS AND DRAWINGS ARE COPYRIGHT AND ARE NOT TO BE USED OR REPRODUCED WITHOUT THE WRITTEN PERMISSION OF BURCHILL VDM PTY LTD.

DO NOT SCALE FROM THIS DRAWING  
FULL SIZE : A1

DRAWING TITLE :  
**INFRASTRUCTURE PROVISIONS REPORT**

**STORMWATER DRAINAGE  
SYSTEM PLAN**

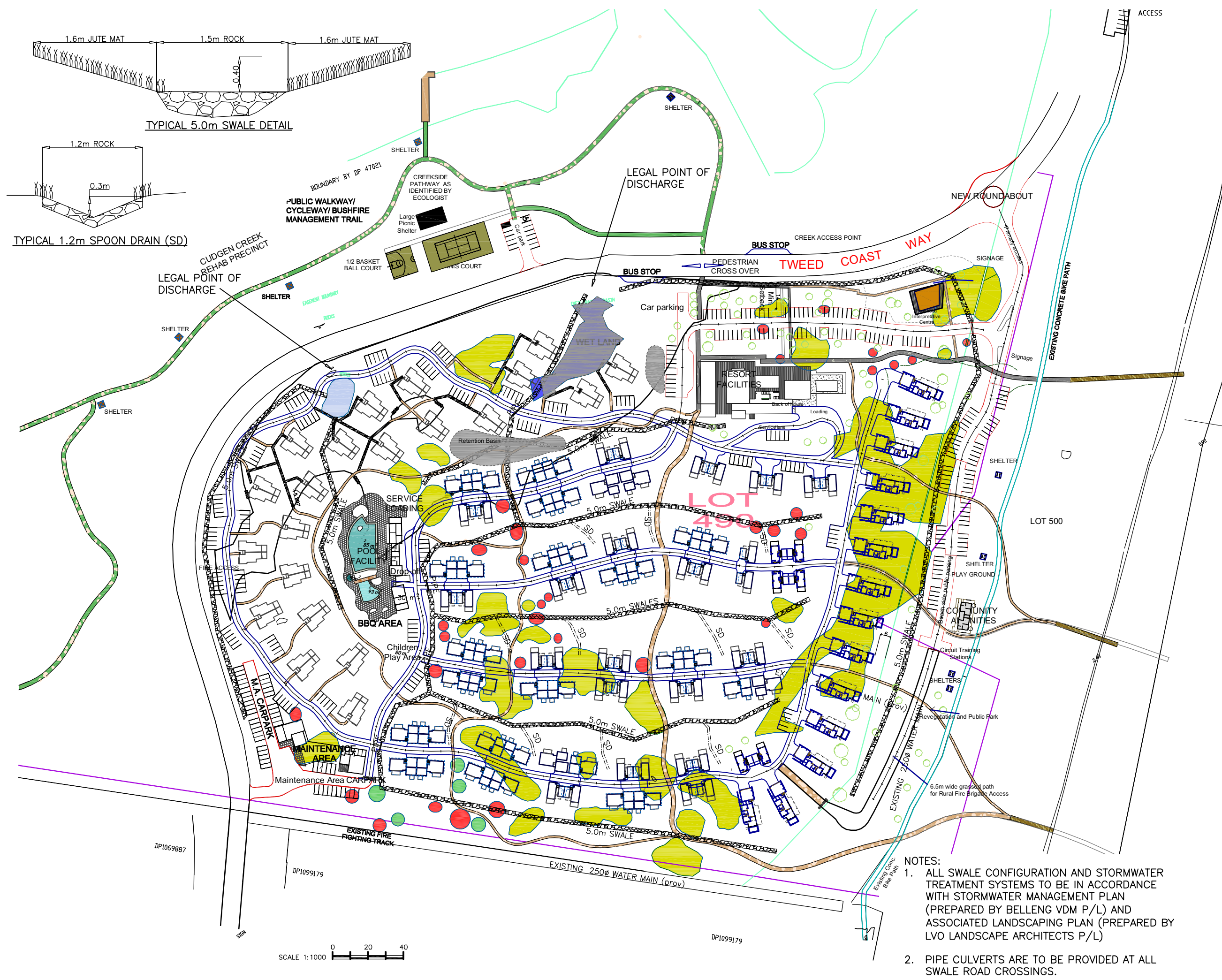
**BURCHILL VDM  
PTY LIMITED**

ACN 010 140 495  
CIVIL & STRUCTURAL CONSULTING ENGINEERS & PLANNERS  
13 James Street, Beenleigh, Qld. 4207  
Phone (07) 3807 4737  
Fax (07) 3807 4757  
Email info@kempe.burchillvdm.com.au

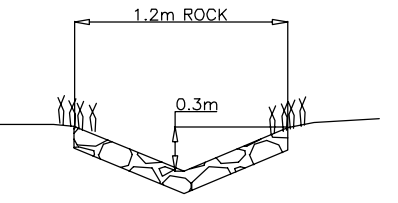
DESIGNED : DRAWN :  
CHECKED : DATE : 081008  
FILENAME : KE3655-SK1

APPROVED FOR AND ON BEHALF OF  
BURCHILL VDM PTY LIMITED : R.P.E.U.O. No. :

DRAWING No. : AMENDMENT :  
**APPENDIX G D**



TYPICAL 5.0m SWALE DETAIL



TYPICAL 1.2m SPOON DRAIN (SD)

- NOTES:
- ALL SWALE CONFIGURATION AND STORMWATER TREATMENT SYSTEMS TO BE IN ACCORDANCE WITH STORMWATER MANAGEMENT PLAN (PREPARED BY BELLENG VDM P/L) AND ASSOCIATED LANDSCAPING PLAN (PREPARED BY LVO LANDSCAPE ARCHITECTS P/L)
  - PIPE CULVERTS ARE TO BE PROVIDED AT ALL SWALE ROAD CROSSINGS.









